





## fresco BEAUMONT

DESIGNED BY:  
jared flood



**SIZES:** Average Adult 2-Color Tam Version  
(Average Adult 4-Color Beanie Version)

**Dimensions:** 22½" (21½)" circumference  
stretched, 8½ (7¼)" tall

### MATERIALS:

**Fresco** by **Classic Elite** (60% wool, 30% alpaca, 10% angora; 50 gram hank = approx. 164 yards)

#### 2-Color Tam Version:

- 1 hank Main Color (MC): #5301 Parchment
- 1 hank Contrast Color (CC): #5355 Rumba Red

#### 4-Color Beanie Version

- 1 hank Shade 1: #5377 Charcoal Black
- 1 hank Shade 2: #5375 Greystone
- 1 hank Shade 3: #5303 Cinder
- 1 hank Shade 4: #5301 Parchment

### Needles:

#### 2-Color Tam Version

- One 16" circular each sizes US 4 and 7 (3.5 and 4.5 mm)
- One set of double pointed needles (dpns) size US 7 (4.5 mm)

#### Or size to obtain gauge

#### 4-Color Beanie Version

- One 16" circular each in sizes US 3 and 5 (3.25 and 3.75 mm)
- One set of double pointed needles (dpns) size US 5 (3.75 mm)

#### Or size to obtain gauge

### Notions:

- Stitch marker
- Tapestry needle

### GAUGE:

2-Color Tam Version: 28 sts and 28 rows = 4" in Tam Colorwork patterns (see charts) with larger needle (size US 7).

4-Color Beanie Version: 31 sts and 32 rows = 4" in Beanie Colorwork patterns (see charts) with larger needle (size US 5).

Take time to save time, check your gauge.

### PATTERN STITCHES:

**2 x 2 Rib: (multiple of 4 sts)**

Rnd 1: \*K2, p2; rep from \* around.

Rep Rnd 1 for 2 x 2 Rib.

### NOTES FROM JARED:

It's a special opportunity to knit colorwork with a wool blend that has a touch of angora in it. The luscious softness and tell-tale halo of angora creates a smokiness that enhances the cohesion of colorwork fabric, and adds a downy and mysterious quality to the work. Knitters of traditional Bohus yoke sweaters know how the magic of angora can create unique and beautiful colorwork fabrics. When I first started stitching up *Fresco*, I was seized by the urge to work up a graphic, colorwork fabric. *Beaumont* was an exercise in combining these two lovely elements. I've knit up two versions—one in 2 colors with a traditional Tam shape, the other in 4 shades of grey with a beanie fit. Mix and match colors and fit to suit your tastes—knitter's preference!

The traditional tam shape is achieved by wet-blocking your finished garment over a medium dinner plate or circular cardboard cut-out (a 10" diameter is usually sufficient). Instructions outside the parenthesis are for the Tam Version—those inside are for the Beanie version.

### TAM (BEANIE)

With smaller needle (as indicated for each version) and CC (Shade 1), CO 108 sts. Join to beg working in-the-rnd being careful not to twist sts; place marker (pm) for beg-of-rnd (BOR).

\*K2, p2; rep from \* around, establishing 2 x 2 Rib. Rep previous rnd until pc meas 1 (¾)" from beg.

**Inc Rnd:** \*K2, m1; rep from \* to last 4 sts, k4. [160 sts on needle]

Change to larger needle; with MC (Shade 1), knit 2 rnds.

**Work Rows 1–3 of Chart A (as indicated for each version).**

NOTE: Chart A is a multiple of 8-sts and reps itself 20 times on each rnd.

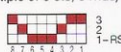
After completion of Chart A, cont as follows:

**Inc Rnd:** With MC (Shade 1), k1, m1, k80, m1, k to end. [162 sts on needle]

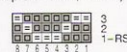
**Work Rows 1–25 of Chart B (as indicated for each version).**

NOTE: Chart B is a multiple of 9-sts and reps itself 18 times on each rnd.

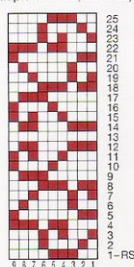
TAM Chart A  
(multiple of 8 sts; 3 rnds)



BEANIE Chart A  
(multiple of 8 sts; 3 rnds)



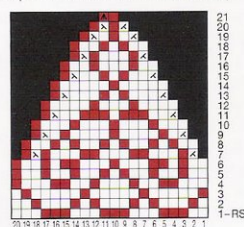
TAM Chart B  
(multiple of 9 sts; 25 rnds)



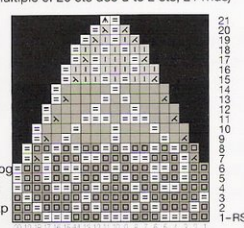
BEANIE Chart B  
(multiple of 9 sts; 25 rnds)



TAM Chart C  
(multiple of 20 sts dec'd to 2 sts; 21 rnds)



BEANIE Chart C  
(multiple of 20 sts dec'd to 2 sts; 21 rnds)



Work in Circular Fair Isle Stockinette Stitch

- with MC, knit
- with CC, knit
- with Shade 1, knit
- with Shade 2, knit
- with Shade 3, knit
- with Shade 4, knit
- with color shown in chart, k2tog
- with color shown in chart, ssk
- with color shown in chart, s2kp
- no stitch



After completion of Chart B, cont as follows:

**Dec Rnd:** With MC (Shade 1), \*k2tog, k79; rep from \* once more. [160 sts on needle]

**Work Rnds 1–21 of Chart C (as indicated for each version).**

NOTE: Chart C begins as a multiple of 20 sts and includes decreasing to shape the crown of hat. The chart reps itself 8 times around. Change to dpns when necessary. Marker

placement will change at the end of rnd 20; work row 20 as follows: Work in patt to end of rnd, remove marker, wyib slip 1 st purlwise from LH to RH needle, replace marker. This indicates new BOR. [16 sts rem on needle]

After completion of Chart C, cont as follows:

With CC (Shade 4), knit 1 rnd.

**Dec Rnd:** With CC (Shade 4), \*K2tog; rep from \* around. [8 sts on needle]

Break yarn leaving 6" tail. With tapestry needle, thread tail through rem 8 sts, pull snugly to close top of hat. Weave in all ends.

**Tam Version:** Block over dinner plate or cardboard circle with approx. 10" diameter making sure not to stretch ribbing while blocking.

