



Aoife Shawl

November 2023

This pattern is created and designed by Nikolett Corley Designs - may not be distributed in any form. Thank you!
<https://www.ravelry.com/designers/nikolett-corley-designs>





Material

Fingering weight natural fiber yarn, 3 colors, 420yds/3.5oz each.

The original made of Malabrigo Mechita 100% superwash merino, colors off-white, black and red.

Knitting needles

US2.5 / 3mm circular knitting needles with 40" cable

Other notions

Stitch markers

Tapestry needles – to weave in ends

Gauge

24 sts x 60 rows = 4" in garter stitch, on US2.5 / 3mm needles

The gauge isn't crucial for this project, but differences will affect the finished size, as well as the required yardage.

Final size – after blocking

Approx. 70" long x 34" deep (with given gauge)

Abbreviations

CO= cast on

BO= bind off

st(s)= stitch(es)

k=knit

p=purl

yo=yarn over

k2tog= knit 2 sts together

ssk= slip knit wise, slip knit wise, knit 2 sts together

CDD= central double decrease

SP= spine stitches

A/B/C= colors A/B/C

...= repeat between stars

RS= right side

WS= wrong side

Notes

- This is a top-down, triangle shaped shawl.
- **The shawl has 2 segments:** 2 side wings – right and left.
- **Chart and written instructions show RS rows only.**
- Read the chart from right to left, bottom-up.
- **At lace design work on WS rows as the sts show:** RS k- WS p, RS yo- WS p, RS decrease- WS p.

This pattern is created and designed by Nikolett Corley Designs - may not be distributed in any form. Thank you!

<https://www.ravelry.com/designers/nikolett-corley-designs>





- There are 2-2 knit sts at the beginning and the end of the rows- charts don't show them.
- There are 2 spine sts at the center of the shawl – knit on RS and p on WS.
- There are 4 increases (yo-s) in every RS row: 1-1 sts next to edge sts at the beginning and end of the row, and 1-1 sts both sides of the spine stitches.
- Do not twist yo-s, when purling them on WS – they must make holes.
- Name your colors **A** (off-white), **B** (black) and **C** (red).

How to use the mosaic chart

1. Read the mosaic chart from right to left, starting at the bottom.
2. All sts are k sts – they show as garter sts.
3. The first square of the rows (on right side) is for technical reasons, DO NOT knit it: it determines which color you will be using throughout the whole row, and back. Whichever you are using, you knit the squares/stitches with the color shown, and slip the others.
4. It is VERY important to keep in mind, that on the **right side** (odd numbered rows) you slip stitches with the **yarn in back**, and on the **wrong side** (even numbered rows) you slip the stitches with the **yarn on front**. This way all “slips” will appear ONLY on the wrong side of your work.
5. Make sure, while you slip the stitches, you guide the yarn along - DO NOT pull tight!
6. The slipped stitches should face in the same direction, as the knitted ones.

Begin the shawl

With color **A**, CO **12** sts – using long tail CO method. Work on first row with k sts across (WS).

1st lace section

In next row (RS), start working on lace design – follow 1. chart or written instructions. Chart shows 1 side wing and 2 spine sts only. After 2 spine sts start the row from the beginning.

Chart doesn't include the 2-2 side sts!

In Row1, there are 4 increased sts – 16 sts on needles all together.

Work on Row1-Row26 **once**, then repeat Row19-Row26 **twelve** times.

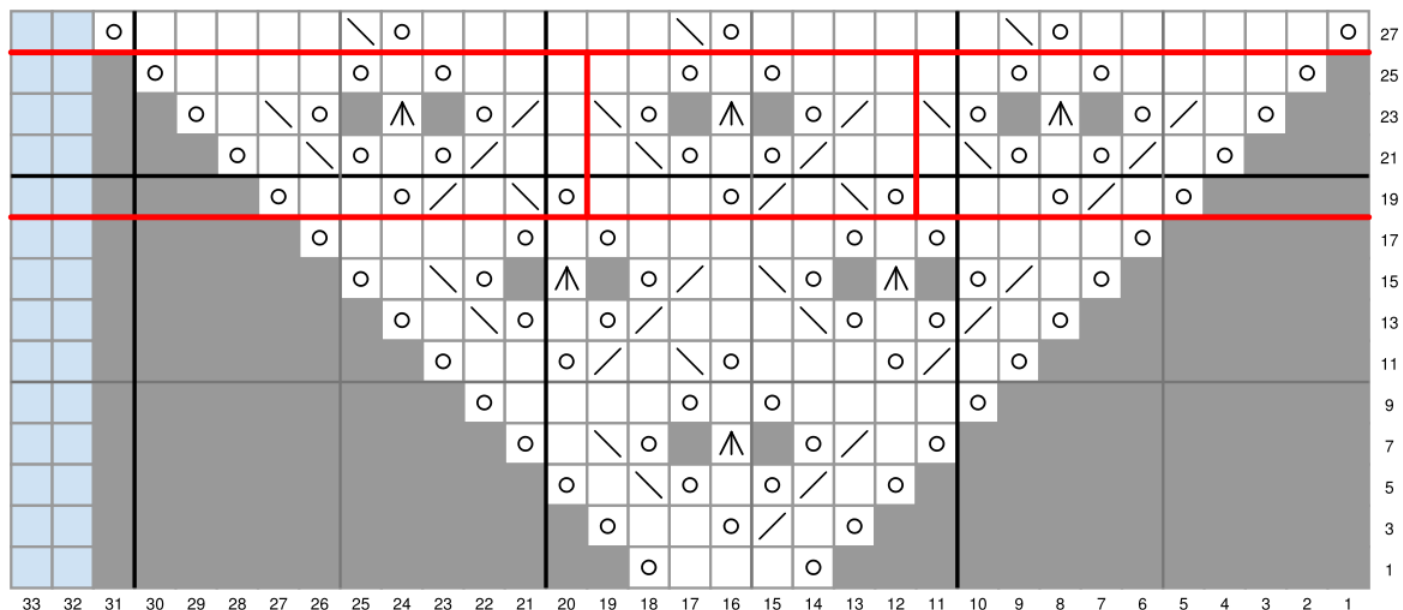
Repeat sts between red marks, place st markers, if you wish.

Finish lace section with Row27-Row28. There are now **260** sts on needles.





1. chart - Lace chart



- RS: knit, WS: purl
- RS: yarn over, WS: purl
- RS: slip knitwise, slip knitwise, knit stitches together, WS: purl
- RS: knit 2 together, WS: purl
- RS: Central Double Decrease, WS: purl
- Spine stitches, RS: knit, WS: purl
- repeat
- No stitch
- Repeat

This pattern is created and designed by Nikolett Corley Designs - may not be distributed in any form. Thank you!
<https://www.ravelry.com/designers/nikolett-corley-designs>



Written instructions

Row 1 (RS): k2, yo, k3, yo, SP2, yo, k3, yo, k2,

Row 2-4-6... (every **WS** rows): k2, p until last 2 sts, k2.

Row 3: k2, yo, k, (k2tog), yo, k2, yo, SP2, yo, k, (k2tog), yo, k2, yo, k2.

Row 5: k2, yo, k, (k2tog), yo, k, yo, ssk, k, yo, SP2, yo, k, (k2tog), yo, k, yo, ssk, k, yo, k2.

Row 7: k2, yo, k, (k2tog), yo, CDD, yo, ssk, k, yo, SP2, yo, k, (k2tog), yo, CDD, yo, ssk, k, yo, k2.

Row 9: k2, yo, k4, yo, k, yo, k4, yo, SP2, yo, k4, yo, k, yo, k4, yo, k2.

Row 11: k2, yo, k, (k2tog), yo, k3, yo, ssk, k, (k2tog), yo, k2, yo, SP2, yo, k, (k2tog), yo, k3, yo, ssk, k, (k2tog), yo, k2, yo, k2.

Row 13: k2, yo, k, (k2tog), yo, k, yo, ssk, k3, (k2tog), yo, k, yo, ssk, k, yo, SP2, yo, k, (k2tog), yo, k, yo, ssk, k3, (k2tog), yo, k, yo, ssk, k, yo, k2.

Row 15: k2, yo, k, (k2tog), yo, CDD, yo, ssk, k, (k2tog), yo, CDD, yo, ssk, k, yo, SP2, yo, k, (k2tog), yo, CDD, yo, ssk, k, (k2tog), yo, CDD, yo, ssk, k, yo, k2.

Row 17: k2, yo, k4, yo, k, yo, k5, yo, k, yo, k4, yo, SP2, yo, k4, yo, k, yo, k5, yo, k, yo, k4, yo, k2.

Row 19: k2, yo, k, (k2tog), yo, k3, yo, ssk, k, (k2tog), yo, k3, yo, ssk, k, (k2tog), yo, k2, yo, SP2, yo, k, (k2tog), yo, k3, yo, ssk, k, (k2tog), yo, k3, yo, ssk, k, (k2tog), yo, k2, yo, k2.

Row 21: k2, yo, k, (k2tog), yo, k, yo, ssk, k3, (k2tog), yo, k, yo, ssk, k3, (k2tog), yo, k, yo, ssk, k, yo, SP2, yo, k, (k2tog), yo, k, yo, ssk, k3, (k2tog), yo, k, yo, ssk, k3, (k2tog), yo, k, yo, ssk, k, yo, k2.

Row 23: k2, yo, k, (k2tog), yo, CDD, yo, ssk, k, (k2tog), yo, CDD, yo, ssk, k, (k2tog), yo, CDD, yo, ssk, k, yo, SP2, yo, k, (k2tog), yo, CDD, yo, ssk, k, (k2tog), yo, CDD, yo, ssk, k, (k2tog), yo, CDD, yo, ssk, k, yo, k2.

Row 25: k2, yo, k4, yo, k, yo, k5, yo, k, yo, k5, yo, k, yo, k4, yo, SP2, yo, k4, yo, k, yo, k5, yo, k, yo, k5, yo, k, yo, k4, yo, k2.

Repeat Row27-Row34, twelve times as follows:

Row 27: k2, yo, k, (k2tog), yo, k3, *yo, ssk, k, (k2tog), yo, k3* repeat across, yo, ssk, k, (k2tog), yo, k2, yo, SP2, yo, k, (k2tog), yo, k3, *yo, ssk, k, (k2tog), yo, k3* repeat across, yo, ssk, k, (k2tog), yo, k2, yo, k2.

Row 29: k2, yo, k, (k2tog), yo, k, yo, ssk, k1 *k2, (k2tog), yo, k, yo, ssk, k1 * repeat across, k2, (k2tog), yo, k, yo, ssk, k, yo, SP2, yo, k, (k2tog), yo, k, yo, ssk, k1 *k2, (k2tog), yo, k, yo, ssk, k1 * repeat across, k2, (k2tog), yo, k, yo, ssk, k, yo, k2.

Row 31: k2, yo, k, (k2tog), yo, CDD, yo, ssk, *k, (k2tog), yo, CDD, yo, ssk* repeat across, k, (k2tog), yo, CDD, yo, ssk, k, yo, SP2, yo, k, (k2tog), yo, CDD, yo, ssk, *k, (k2tog), yo, CDD, yo, ssk* repeat across, k, (k2tog), yo, CDD, yo, ssk, k, yo, k2.

Row 33: k2, yo, k4, yo, k, yo, k2, *k3, yo, k, yo, k2* repeat across, k3, yo, k, yo, k4, yo, SP2, yo, k4, yo, k, yo, k2, *k3, yo, k, yo, k2* repeat across, k3, yo, k, yo, k4, yo, k2.

After completing the instructed section above, come the finishing 2 rows:

Finishing RS row: k2, yo, *k6, yo, ssk* repeat across, k5, yo, SP2, yo, *k6, yo, ssk* repeat across, k5, yo, k2.





Finishing WS row (as before): k2, p until last 2 sts, k2. There are now **260** sts on needles.

1st mosaic section

Join color **B**, k all sts (except spine sts!) in Row1 and Row2.

Attention! Don't forget about spine sts: they are always RS k, WS purl sts!

Work on the 2. chart, complete all rows **once**.

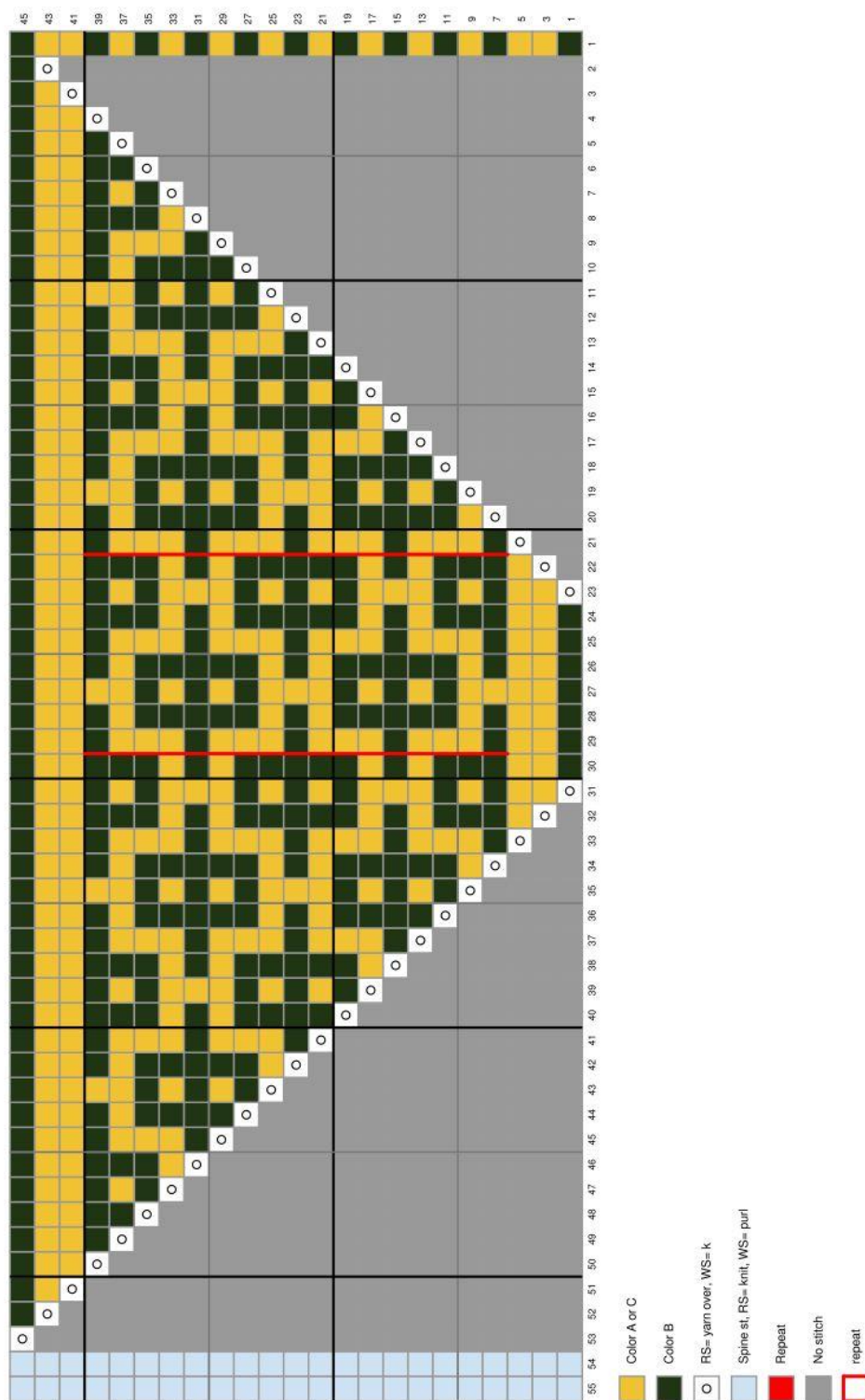
Repeat sts between red marks, place st markers, if you wish.

There are **352** sts on needles at the end of the 1st mosaic section.

Cut color **A**, not needed anymore. Weave in ends.



2. chart - Mosaic chart



This pattern is created and designed by Nikolett Corley Designs - may not be distributed in any form. Thank you!
<https://www.ravelry.com/designers/nikolett-corley-designs>



2nd lace section

Join color **C** and work on lace design again – using previously used chart or written instructions. There are 22 + 22 rhombuses in the row at the beginning. Complete 4-rhombus height + finishing 2 rows (36 rows all together). Now there are 25-25 rhombuses in the row.

428 sts on needles at the end of 2nd lace section.

Written instructions

Row 1 (RS): k2, yo, k to SP, yo, SP2, yo, k until last 2 sts, yo, k2.

Row 2-4-6... (every **WS** rows): k2, p until last 2 sts, k2.

***Row 3:** like Row 27

Row 5: like Row 29

Row 7: like Row 31

Row 9: like Row 33*, repeat 4 times.

After completing the instructed section above, come the finishing 2 rows:

Finishing RS row: k2, yo, *k6, yo, ssk* repeat across, k5, yo, SP2, yo, *k6, yo, ssk* repeat across, k5, yo, k2.

Finishing WS row (as before): k2, p until last 2 sts, k2.

There are now **428** sts on needles.

2nd mosaic section

Work with color **B** and **C**.

Complete mosaic chart **once** again. There are now **520** sts on needles.

Cut color **C**, not needed anymore. Weave in ends.

After the 2nd mosaic section, work with color **B** only: garter sts, until you run out of yarn. Don't forget the 4 sts increases in every RS rows!

BO all sts loosely in last RS row. Fasten off, weave in ends.

Wash your shawl, lay flat and let it dry.

