



ANTHE

by Natasja Hornby

I NEVER PROMISED YOU A ROSE GARDEN

Of course the main feature of beautiful Anthe is her luscious mosaic flower border, but she has so much more.

Indulge in her lovely, wearable crescent shape, the rhythmic colorwork bands, the cushy texture, and the endless opportunities for color play. Knitting Anthe is great fun, and when you don't mind turning a lot of heads, wearing her will delight you for sure.



TECHNICAL INFORMATION

CONSTRUCTION

Anthe is a large crescent shaped shawl that is worked from the top down starting with a classic garter tab.

The beautiful colorwork bands are achieved by Mosaic knitting, a very simple and enjoyable technique that allows you to work every row with one strand only. In the pattern you will find an explanation on Mosaic knitting and reading the Charts.

SIZE

One size

Approx 220 cm / 86.5" wingspan along the top edge and 60 cm / 23.5" deep.

YARN

Fingering weight yarn, preferably with some elasticity and bounce (wool or a wool blend).

MC approx 500 m / 545 yards.

CC1 approx 385 m / 420 yards.

CC2 approx 330 m / 360 yards.

Sample is shown in Jamieson's of Shetland Spindrift, 100% wool, 105 m / 115 yards per 25 gr.

Colorways: MC 111 Sholmit/Shaela, CC1 230 Yellow Ochre and CC2 101 Shetland Black.

NEEDLES

One 100 cm / 40" (or longer) circular needle in size needed to obtain gauge listed,

Suggested needle size: 3.5 mm / US #4.

GAUGE

Measured after blocking.

Mosaic Colorwork: 20 sts and 52 rows = 10 x 10 cm / 4 x 4".

Hurdle stitch pattern: 20 sts and 36 rows = 10 x 10 cm / 4 x 4".

MATERIALS

Stitch markers, tapestry needle, blocking pins, blocking mats, blocking wires.

STITCH PATTERNS

Hurdle Stitch Pattern

Row 1 (RS): (k1, p1) to last st, k1.

Row 2 (WS): (p1, k1) to last st, p1.

Row 3 & 4: repeat Row 1 & 2.

Row 5 & 6: knit to end.

TECHNIQUES

Mosaic Colorwork

On page 6 you will find the explanation for working a mosaic pattern and reading the Charts.



DIRECTIONS



GARTER TAB CAST ON

With MC, CO 3 sts.

Work 38 rows in garter st (19 garter ridges).

Next row (RS): turn your work 90 degrees clockwise, PU and k 19 sts (1 st in every garter ridge) to the CO sts, turn your work 90 degrees clockwise and PU and k 3 sts in the CO edge; 25 sts.

Next Row (WS): k3, p to last 3 sts, k3.

SHAWL BODY

Increases to shape the shawl

Next Row (RS): k3, (M1L, k1) to last 3 sts, M1R, k3; 45 sts.

Next row (WS): k3, (k1, p1) to last 4 sts, k1, k3.

Next row: k3, M1L, (p1, k1) to last 4 sts, p1, M1R, k3; 47 sts.

Next row: k3, (p1, k1) to last 4 sts, p1, k3.

Hurdle Pattern, tier 1

Row 1 (RS): k3, M1L, k to last 3 sts M1R, k3; 49 sts.

Row 2 (WS): k to end.

Row 3: k3, M1L, (p1, k1) to last 4 sts, p1, M1R, k3; 51 sts.

Row 4: k3, (p1, k1) to last 4 sts, p1, k3.

Row 5: k3, M1pL, (k1, p1) last 4 sts, k1, M1pR, k3; 53 sts.

Row 6: k3, (k1, p1) to last 4 sts, k1, k3.

Increases to shape the shawl

Next row (RS): k3, M1L, k2, (k2, M1L, k1, M1L) to last 6 sts, k3, M1R, k3; 83 sts.

Next row (WS): k to end.

Next, work Row 3 – 6 of the **Hurdle Pattern, tier 1**; 87 sts

Hurdle Pattern, tier 2

Row 1 (RS): k3, M1L, k to last 3 sts M1R, k3; 89 sts.

Row 2 (WS): k to end.

Row 3: k3, M1pL, (k1, p1) to last 4 sts, k1, M1pR, k3; 91 sts.

Row 4: k3, (k1, p1) to last 4 sts, k1, k3.

Row 5: k3, M1L, (p1, k1) last 4 sts, p1, M1R, k3; 93 sts.

Row 6: k3, (p1, k1) to last 4 sts, p1, k3.

Next, work Row 1 – 6 of the **Hurdle Pattern tier 1**; 99 sts.

Increases to shape the shawl

Next row (RS): k3, M1L, (k1, M1L) three times, (k3, M1L) to last 9 sts, (k1, M1L) three times, k3, M1R, k3; 135 sts

Next row (WS): k to end.

Slip Stitch Ribbon

Row 1 (RS): with CC1, k3, M1L, k to last 3 sts, M1R, k3; 137 sts.

Row 2 (WS): k to end.

Row 3: with CC2, k2, M1L, (sl1, k1) to last 3 sts, sl1, M1R, k2; 139 sts.

Row 4: k3, (sl1, k1) to last 4 sts, sl1, k3.

Break CC2.

Row 5 & 6: repeat Row 1 & 2; 141 sts.

Next, with MC, work Row 1 - 4 of the **Hurdle Pattern, tier 1**; 145 sts.

Next Row (RS): k3, M1L, k to last 3 sts, M1R, k3; 147 sts.

Next Row (WS): k to end.

Break MC.

Next, work Row 1 – 6 of the **Slip Stitch Ribbon**; 153 sts.

Do not break CC2.

Mosaic Band

Next, you are going to work the Mosaic Band. For the Charts and the explanation on how to work them, see page 6 & 7.

Work the Mosaic Band Chart; 163 sts.

Next, work Row 1 – 6 of the **Slip Stitch Ribbon**; 169 sts.

Break CC2.

Next, with MC, work Row 1-4 of the **Hurdle Pattern, tier 1**; 173 sts.

Next Row (RS): k3, M1L, k to last 3 sts, M1R, k3; 175 sts.

Next Row (WS): k to end.

Next, work Row 1 – 6 of the **Slip Stitch Ribbon**; 181 sts.

Break CC1 and CC2.

Next, with MC, work Row 1- 6 of the **Hurdle Pattern, tier 1** (187 sts), Row 1-6 of the **Hurdle Pattern, tier 2** (193 sts) and Row 1 – 6 of the **Hurdle Pattern, tier 1** once more (199 sts).



Increases to shape the shawl

Next row (RS): k3, M1L, k4, M1L, (k4, M1L, k3, M1L) to last 10 sts, k4, M1L, k3, M1R, k3; 255 sts.

Next row (WS): k to end.

Repeating Directions

Next, work the directions under **Slip Stitch Ribbon** until  once more; 319 sts.

Increases to shape the shawl

Next row (RS): k3, M1L, k2, M1L, (k5, M1L, k6 M1L) to last 6 sts, k2 M1L, k1, M1R, k3; 379 sts.

Next row (WS): k to end.

BORDER

Work Row 1-6 of the **Slip Stitch Ribbon**; 385 sts.

Break CC2.

Work Row 1-4 of **the Hurdle Pattern, tier 1**; 389 sts.

Next Row (RS): k3, M1L, k to last 3 sts, M1R, k3; 391 sts.

Next Row (WS): k to end.

Break MC.

Work Row 1-6 of the **Slip Stitch Ribbon** once more; 397 sts.

Mosaic Border

Work the Mosaic Border Chart on page 7; 463 sts.

Next, work Row 1-6 of the **Slip Stitch Ribbon**; 469 sts.

Break CC2, attach MC.

Next, work Row 1-4 of **the Hurdle Pattern, tier 1**; 473 sts.

Next Row (RS): k3, M1L, k to last 3 sts, M1R, k3; 475 sts.

Next Row (WS): k to end.

Next, work Row 1-6 of the **Slip Stitch Ribbon**; 481 sts.

Break CC1 and CC2.

Next, work Row 1-4 of **the Hurdle Pattern, tier 1**; 485 sts.

Next Row (RS): k to end.

Next Row (WS): k to end.

Picot Bind Off

To bind off your shawl, work a Picot Bind Off as follows.

Step 1: CO 2 sts using a knitted cast on.

Step 2: BO 7 sts.

Step 3: slip the st on your RH needle back to your LH needle.

Work Step 1 - 3 until 1 st on your LH needle remains. Slip that st from your RH needle back to your LH needle, cast on 2 sts and BO the three remaining sts for the last picot.

FINISHING

Weave in all ends. Wet block your shawl, preferably using blocking wires. Stretch the shawl to the shape and measurements given in the Schematic.



Working a Mosaic Colorwork Chart

A mosaic pattern is a slip-stitch design using two colors. The colors are worked one at the time, so you will be handling only one strand every row. You will be working a RS and a WS row with one color. After working these two rows, you will drop that color, and work a RS and a WS row with the second color. The chart represents this: every horizontal row of squares represents a RS (right to left) and a WS (left to right) row.

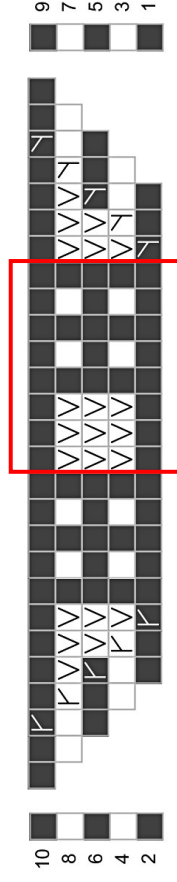
The squares that form the vertical bar on the left and right of the Chart represent the color you will be using for that row. If the square indicates to use MC, you will be working the MC sts, and slipping the CC sts. On the next (WS) row you will be working and slipping the exact same sts. Note that the squares that form the vertical bars do not represent stitches, **and should not be worked at the beginning or end of the row.**

All sts are slipped purlwise, with the yarn held on the WS. So, on a RS row you will be slipping the sts with the yarn in back (wyib) and on the WS rows with the yarn in front (wyif).

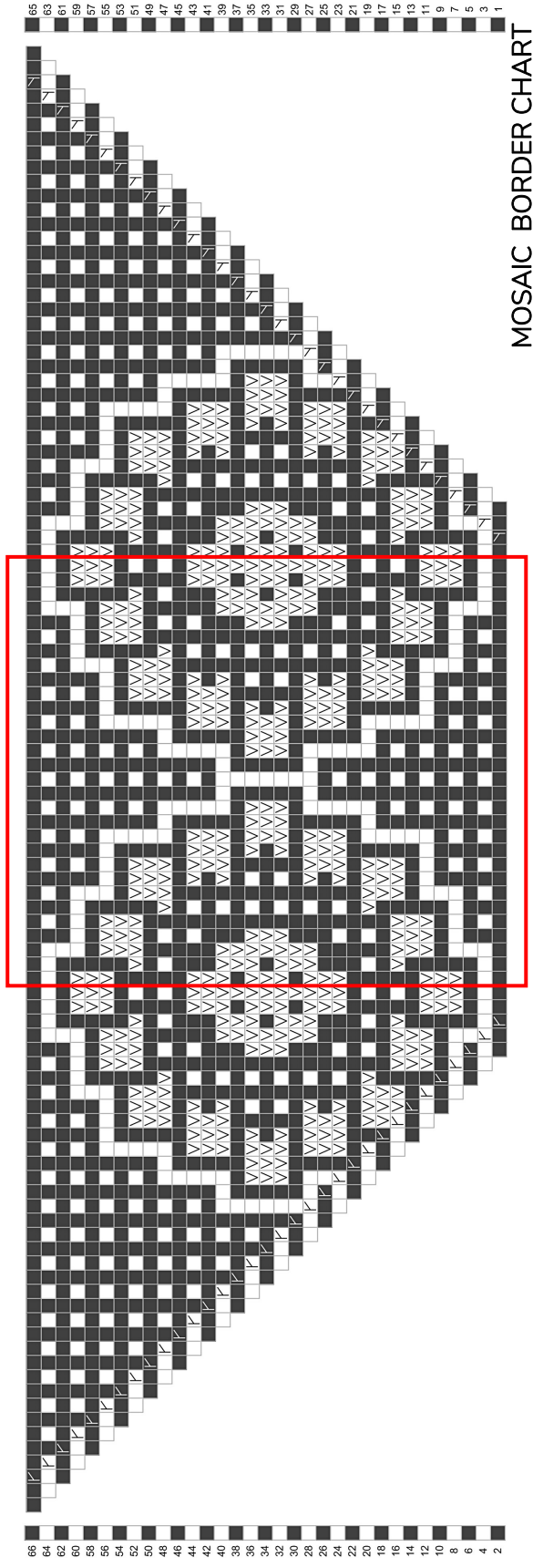
The Mosaic patterns for Anthe combine garter and stockinette stitch. On the WS rows, pay attention if a st should be knitted (for garter stitch) or purled (for stockinette stitch).



- RS: knit
 WS: knit
 RS: knit
 WS: purl
 RS: M1R
 WS: knit
 RS: M1L
 WS: knit
 CC1
 CC2
 Repeat

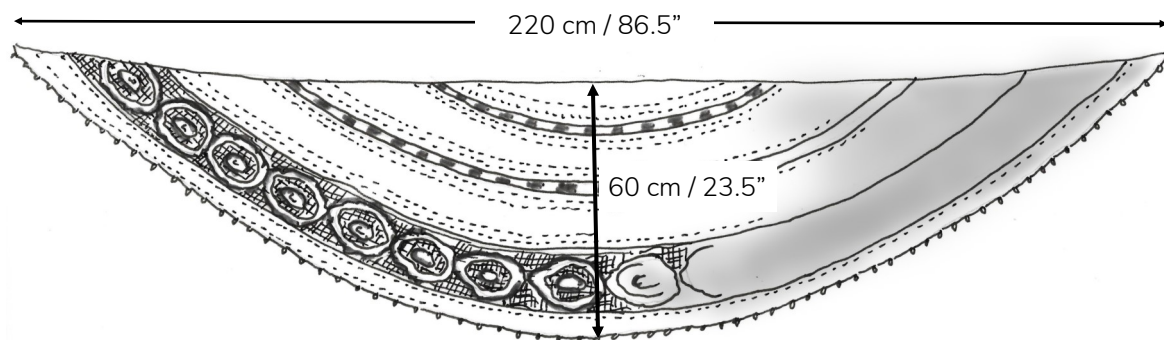


MOSAIC BAND CHART



MOSAIC BORDER CHART

SCHEMATIC



ABBREVIATIONS

approx = approximately

bef = before

BO = bind off

CC = contrast color

CO = cast on

inc('d) = increase(d)

k = knit

kwise = knitwise

LH = left hand

m = marker

M1L / M1pL = make 1 (purl) left (left leaning increase); insert left needle, from front to back, under strand of yarn which runs between next stitch on left needle and last stitch on right needle; knit (purl) this stitch through back loop.

M1R / M1pR = make 1 (purl) right (right leaning increase); insert left needle, from back to front, under strand of yarn which runs between next stitch on left needle and last stitch on right needle; knit (purl) this stitch through front loop.

MC = main color

p = purl

pwise = purlwise

PU = pick up

rem = remove

RH = right hand

RS = right side

sl = slip (purlwise with yarn in back on RS and yarn in front on WS, unless otherwise stated)

st(s) = stitch(es)

WS = wrong side

wyib = with yarn in back

wyif = with yarn in front