

Anime Scarf

By Katharina Kuntz



This scarf is dedicated to my brother Sebastian († 2022). He introduced me to anime and the world of Studio Ghibli. Thanks to him, I was able to learn about these beautiful worlds. This scarf is a gift to him.

I started the scarf design with the idea of arranging the films chronologically. After 1/3 of the scarf, I noticed that many of my favorite movies would be in the middle of the scarf and therefore not visible when worn... Crap. But since I really liked the part that I had already designed, I kept the existing part and placed my other favorite movies on the other end of the scarf.

Some movies have several images, some only one. At the beginning, I knew immediately what I wanted to draw for which movie, but I quickly noticed that not everything could be displayed in a small pixel field or in two colors. So a lot of ideas were thrown out and other things were drawn instead. But in the end, I'm really proud of the result. Pom Poko's raccoon dog is one of my favorites.

Have fun knitting and thank you again for purchasing my pattern, I'm happy that you like my design.

All motifs are explained on pages 13-16, which movie they belong to and what is depicted.

You will need:

Fingering weight Yarn (2,5 – 3,5mm/ US 1 ½ - 4 Needle) around 650m/710yards per color.

I used:

2 skein SOUL fingering Weight Yarn (<https://punkrockunicorn.de>) in color Slight Blue, 400m/100g (438 yards/ 15 oz), (85% Wool 15% Nyon), or a similar weight and yardage in the fiber and color of your choice

2 skein fingering Weight Yarn (<https://www.strickstduscho.de>) in color Marine/4-fach, 410m/100g (448 yards/ 15 oz), (75% New wool superwash 25% Polyamide), or a similar weight and yardage in the fiber and color of your choice

Knitting needles: size 0 (2mm)

Gauge: 32 stitches and 44 rows per 4 inches

Finished dimensions: 80 inches (204 cm) long, 6 inches (15 centimeters) wide

Additional materials: 4 Stitch markers, tapestry needle, yarn tension ring. Extra +2 spare 2mm needles (for binding of).

Skill level: Intermediate level

General Notes:

As with most double-knit projects, the two sides mirror each other, with colors opposite. If you never knitted a double-knit this video could help you understand the technique more. I would start watching at 2:44 because we are going to use a different cast on method than in this video.

<https://www.youtube.com/watch?v=uQKZR-2TwCA&t=626s>

You can also see how the color change works and how to use the tension ring. Don't worry if you have never worked with one you are going to get a hang of it pretty fast. A Tipp from me, I wrapped the yarn twice around my pinky to keep the tension.

The Side with the light background is the Main side but you can do the opposite if you like it more. Side two is the back of the scarf, with a dark background. Whichever side is facing you on a particular row is the knit side, and each alternating back side stitch will be a purl. Stop knitting and check your work frequently – a wrong color stitch, a purl where a knit stitch should be, or the unused color laying across the wrong side of a stitch will stand out on the finished scarf. You can use duplicate stitch to cover an error that is many rows back or re knit new. But I recommend to duplicate stitch over the error if there are not too many mistakes. It's sooooo difficult to get the loops on the needle again after unraveling it. I put a stitch marker every 10 stitches it helps a lot. Be sure to twist the yarn at the end/beginning a row – if you do not, the front and back of the scarf will separate. In the first Video I linked this is explained as well.

Instructions:

Cast on 100 stitches with the invisible cast on method for double knitting. This Video explains is really well. It's the first Method of the four. <https://www.youtube.com/watch?v=2lWl2jlpMBM&t=200s>

After the cast on turn your piece and knit every odd stitch in Marine (Blue, or your color of choice), purl every even numbered stitch in Slight Blue (Light blue, or your color of choice). The charts show only one side of the two-sided project. Starting with Chart 1, follow the charts row by row (below). The two strands of yarn need to move back and forth together so that they stay sandwiched between the two layers of knitting when not being used to make stitches. If you don't keep them moving together you will end up with the 'wrong' color wrapped around the stitches, you have knitted – you will notice pretty quickly! Remember that when you have turned the work and are coming back along the row from left to right, what is shown on the chart for that row is the purl stitch. Knit the even numbered stitches, from 50 down to 2, in the opposite color, and purl the even numbered stitches, from 49 down to 1, in the chart color. When you turn back to the original side, knit in the chart color and purl with the second color. If you are new to double-knitting this pattern should be a good place to start - the first few rows have no patterning, so your skills can develop as the scarf progresses. Always start from the bottom of the charts and work up.

Bind Off:

Put the knit and purl stitches respectively on your separate needles. Now purl all the purl stitches on the back needle, one row. After cutting the main yarn, 4 times the lengths of the width of the scarf, take your tapestry needle and make an invisible bind off for double knitting. It is like the Kitchener stitch.

Video for the Bind of: <https://www.youtube.com/watch?v=8hAHV1O1aj0>

Last but not least:

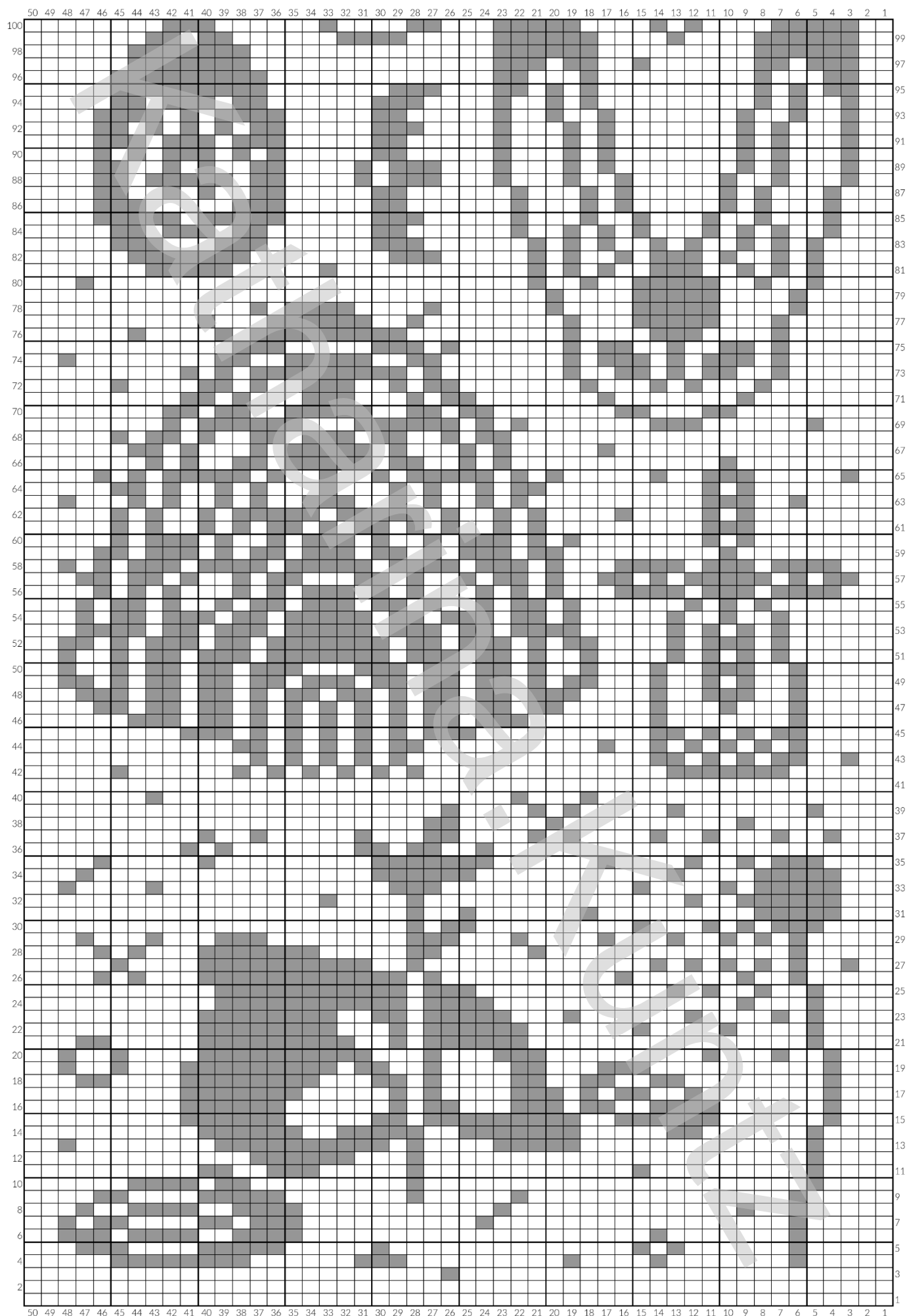
Weave in the ends and block your scarf.

I hope you had a great time knitting this fun scarf. Send me a picture of it, please. I'd love to see it. I can't wait to see which colors you choose.

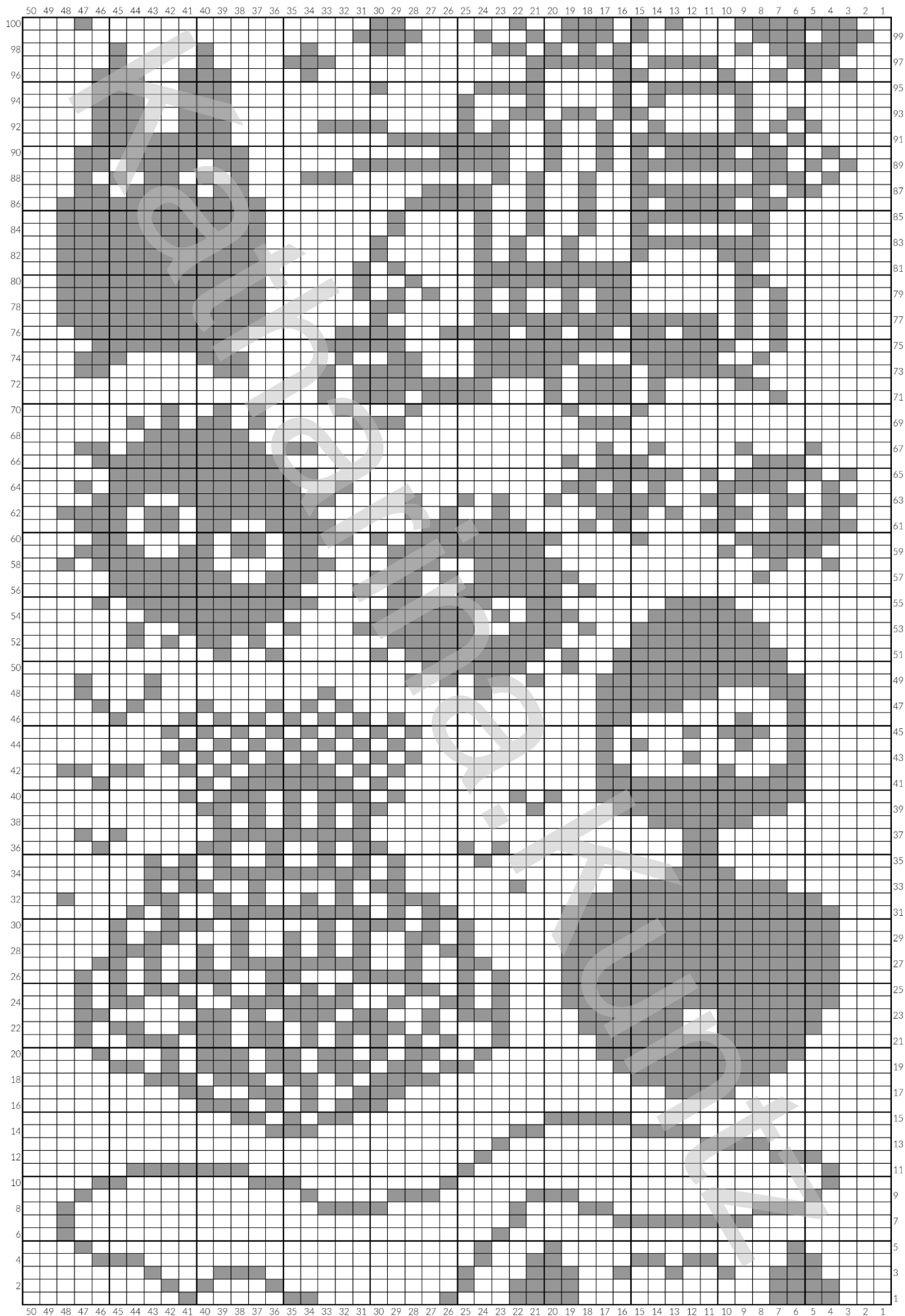
You can find me online at Instagram as [katharina.kuntz](#)

This pattern was designed by Katharina Kuntz / November 2024. This pattern is for private use only. It is not allowed to copy, share, sell or redistribute this pattern. Neither is it allowed to sell products made with the help of this pattern.

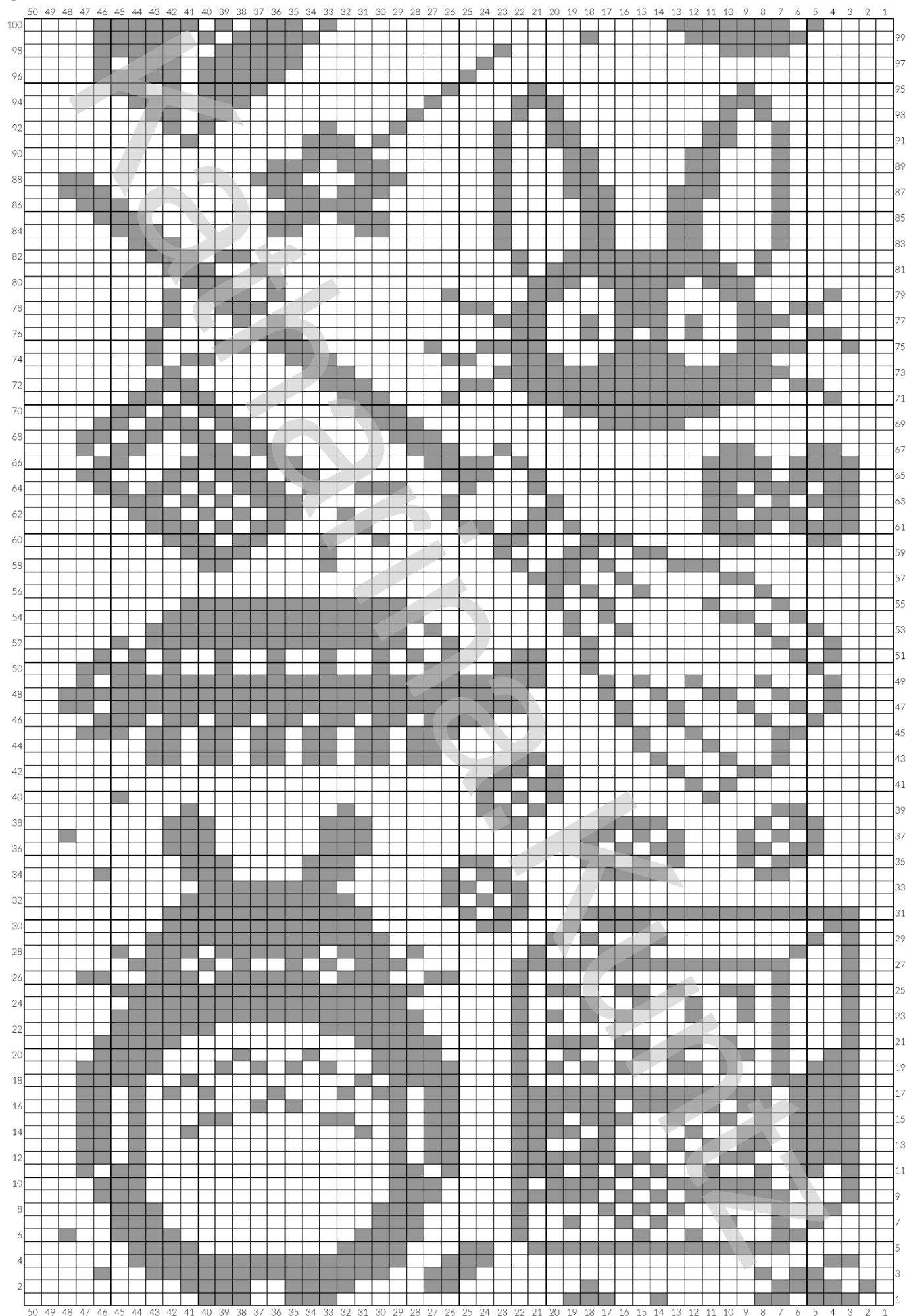
1.



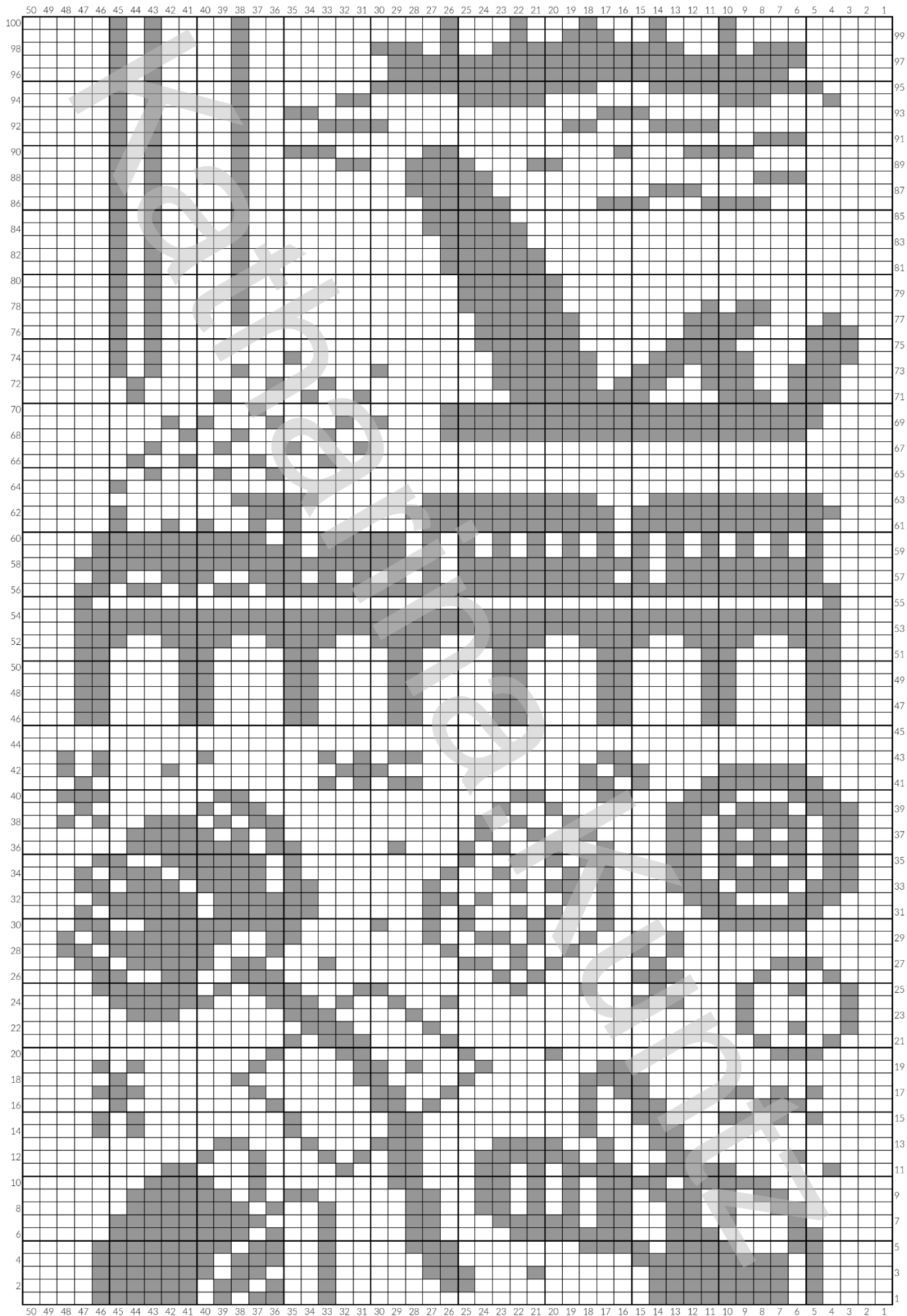
2.



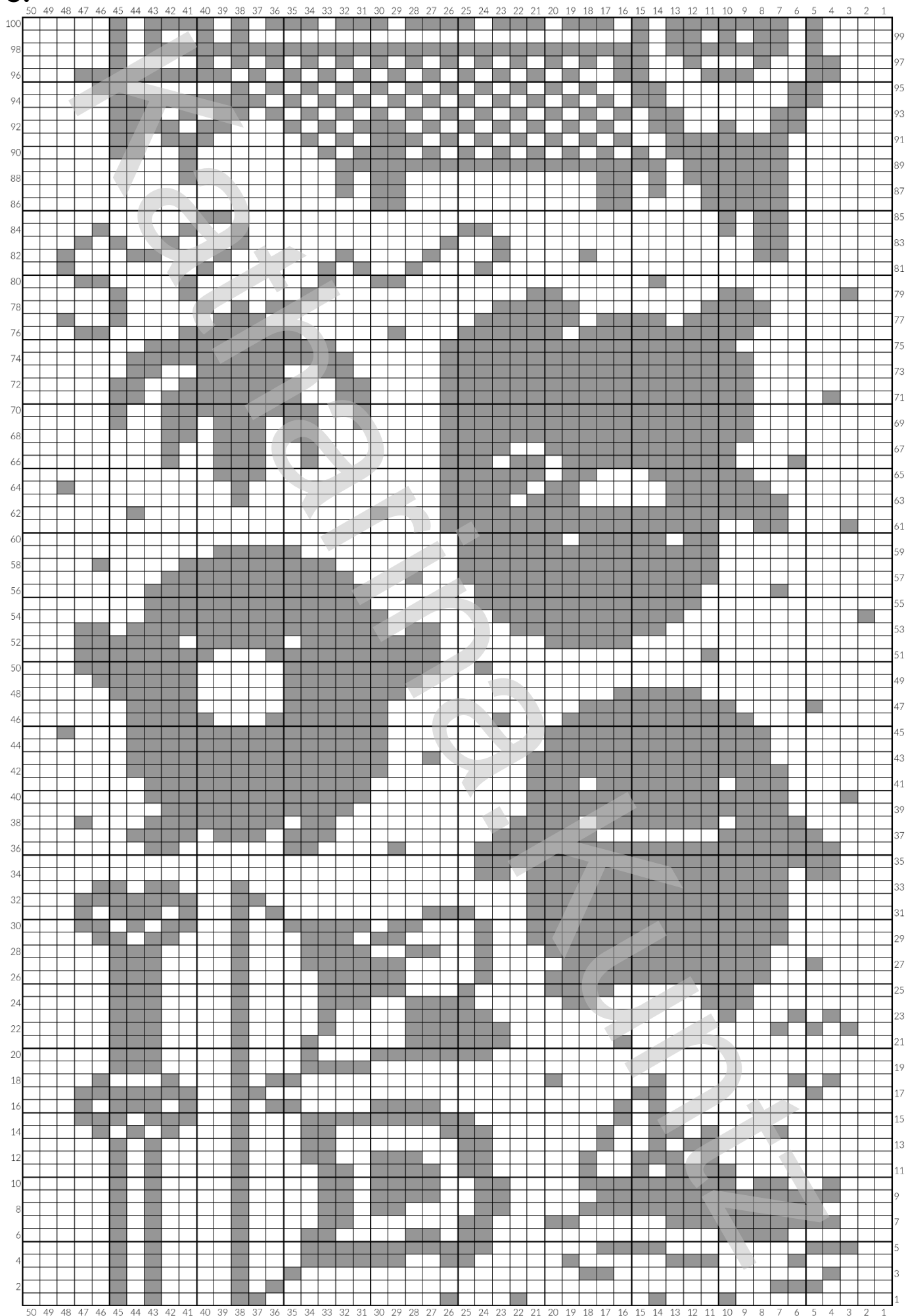
3.



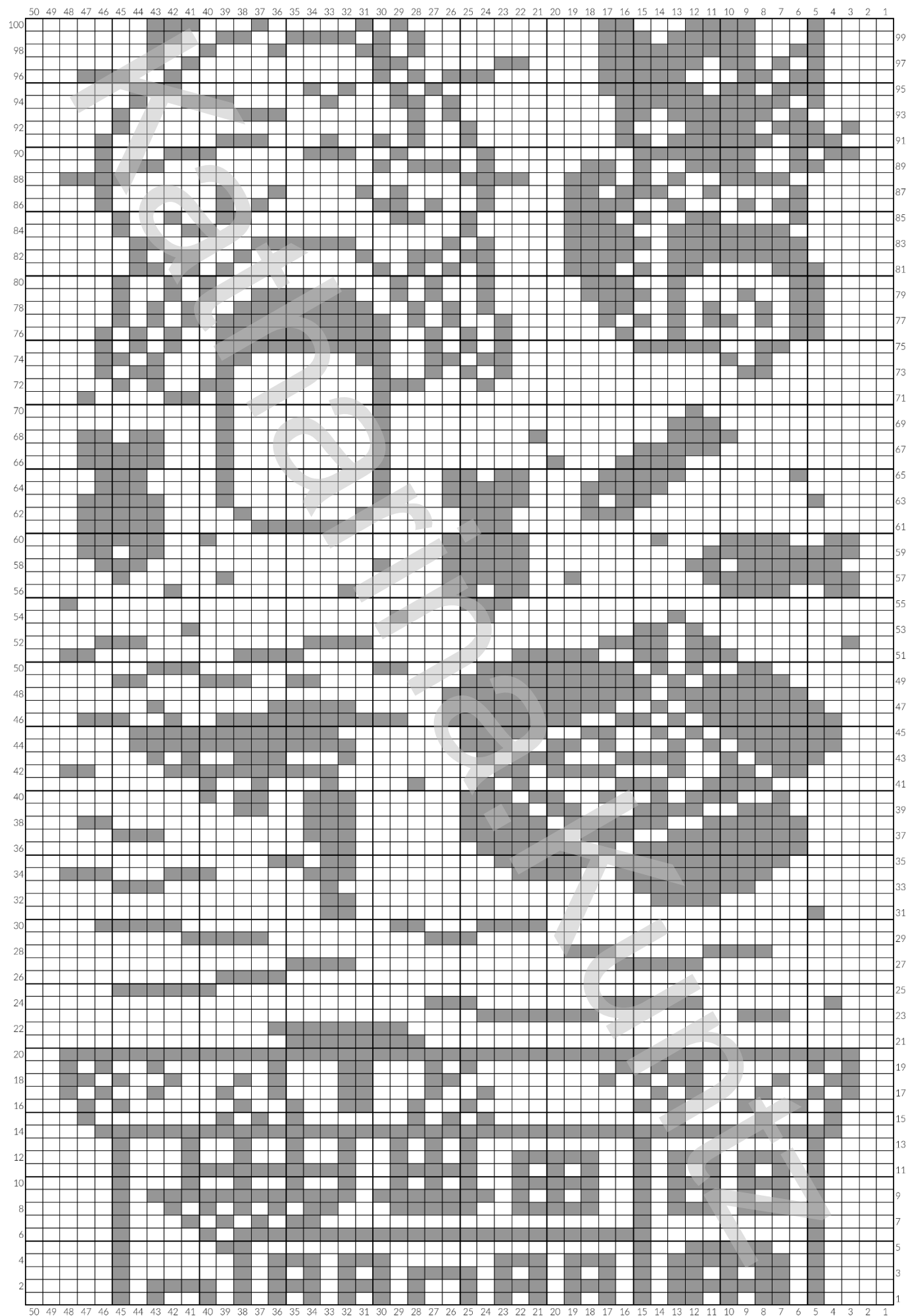
4.



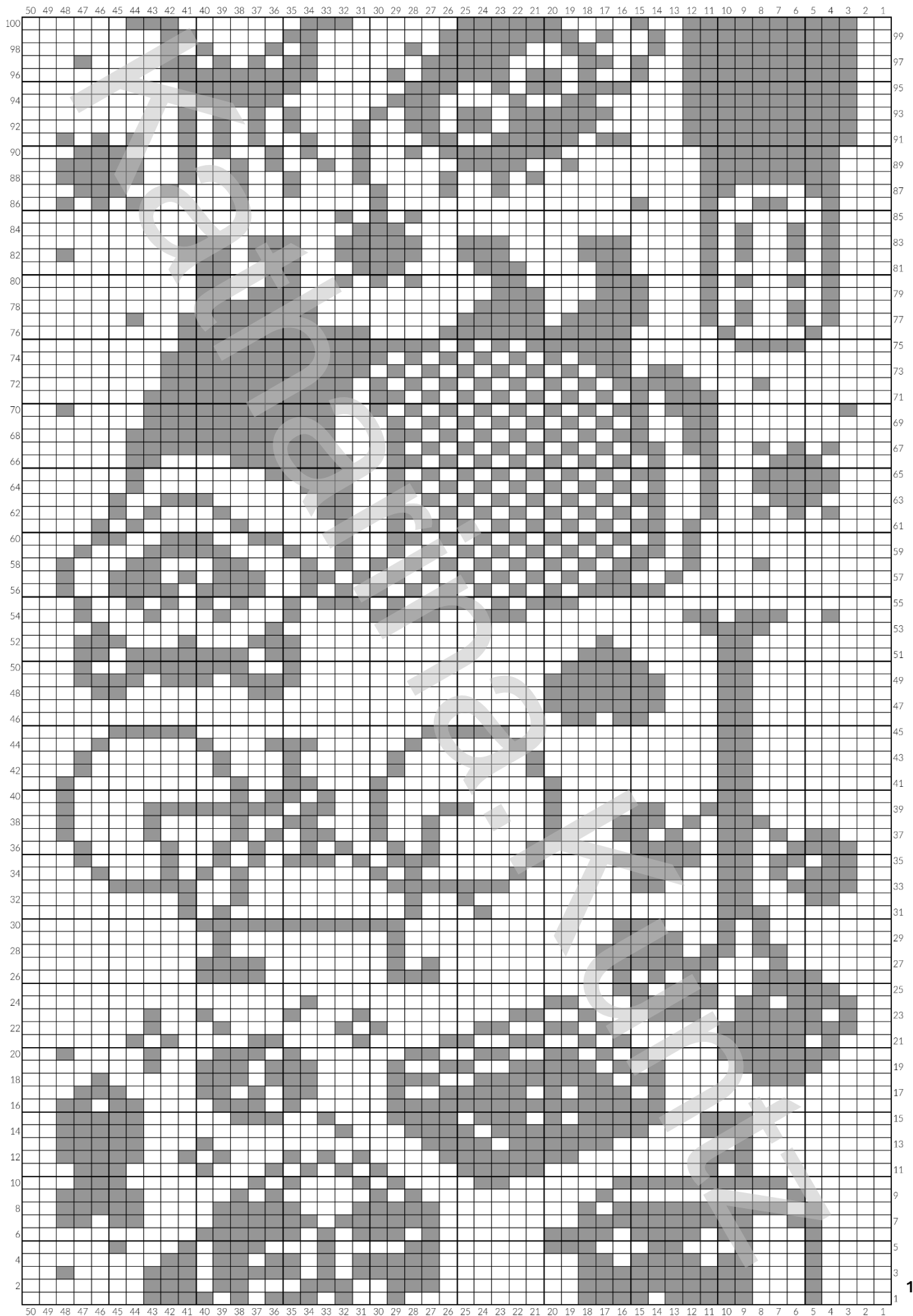
5.



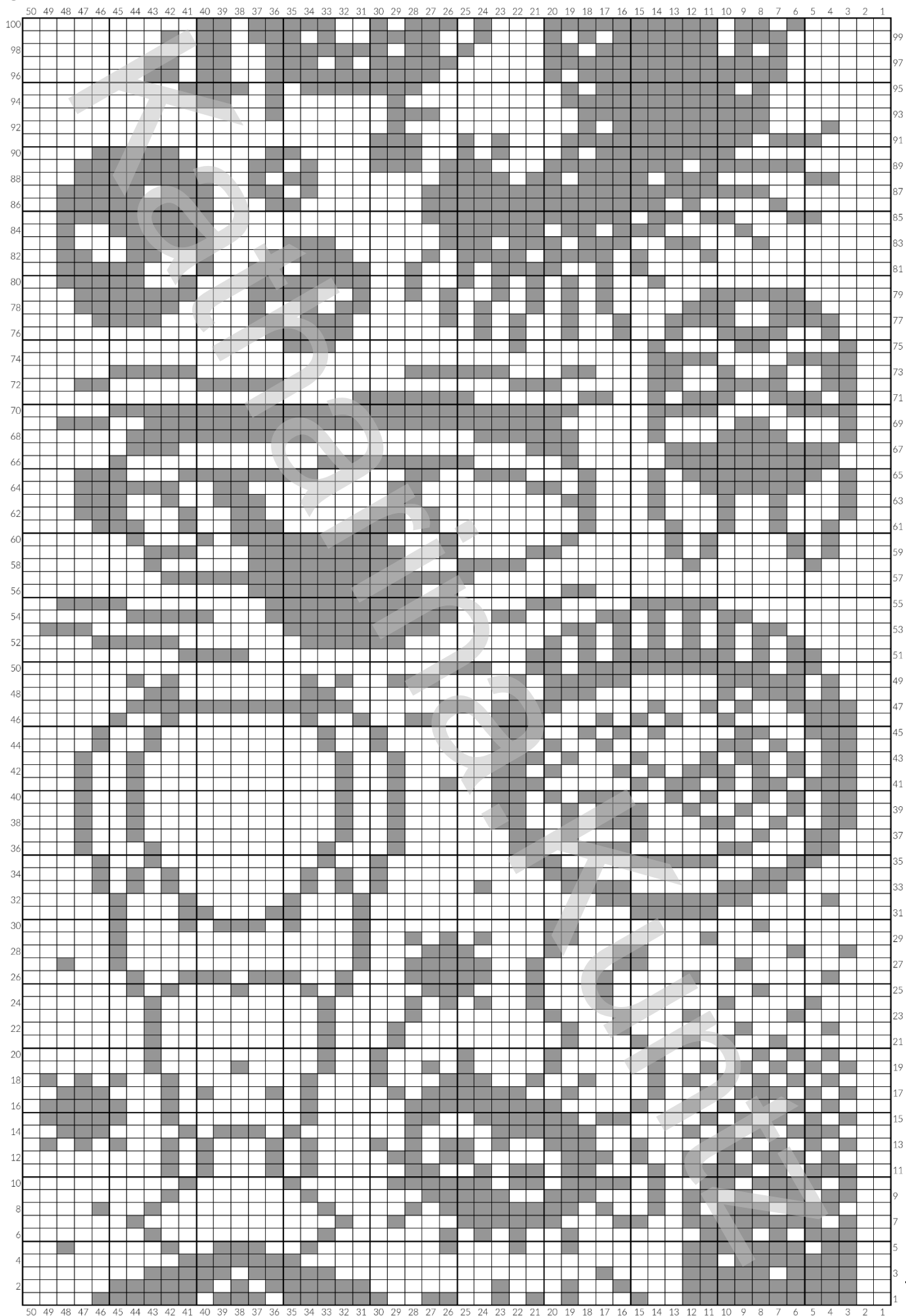
6.



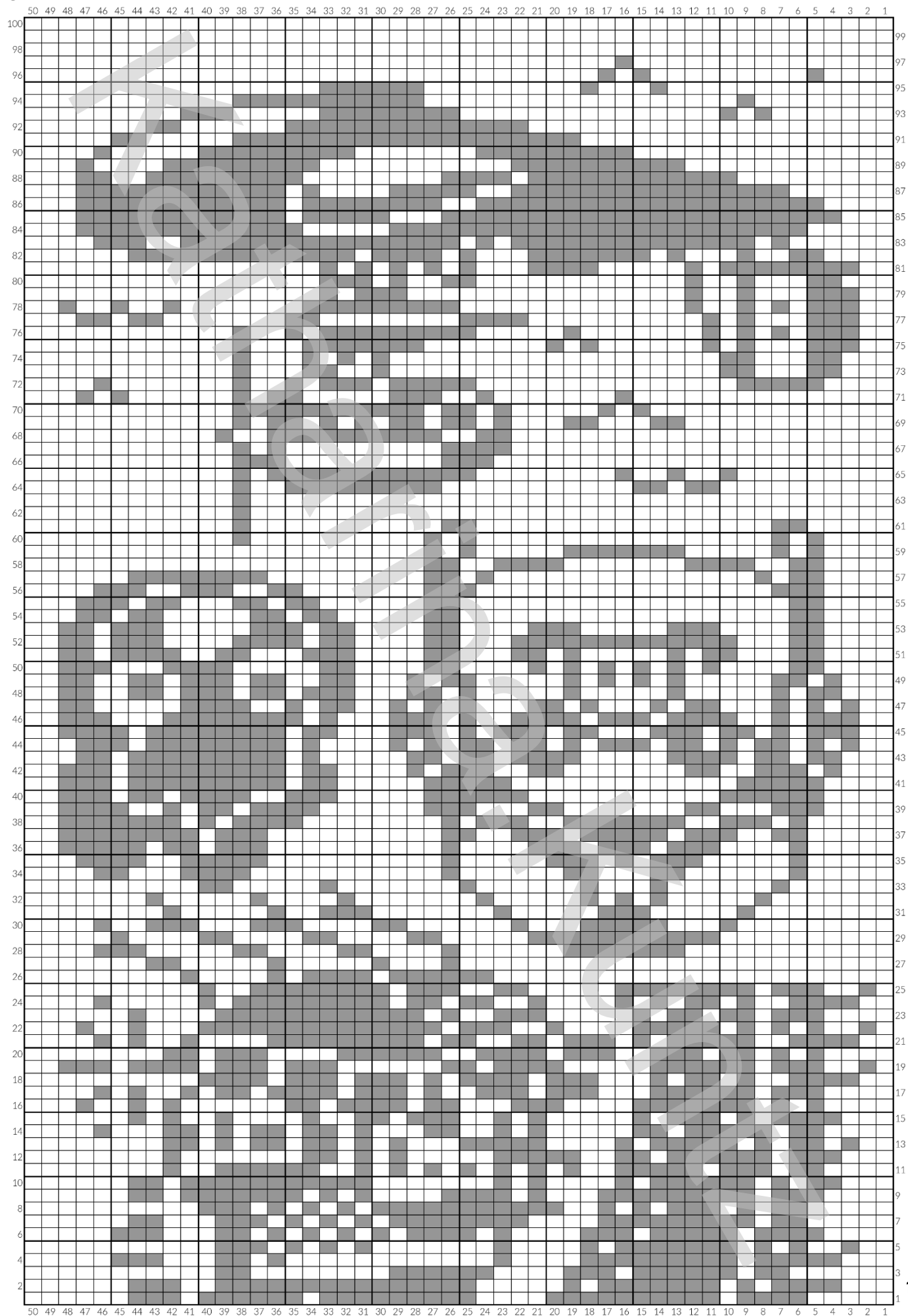
7.



8.



9.





Beginning of the Scarf

Movie: Nausicaä

1. Item: Nausicaä's Hat from the Ending scene
2. Item: Plant distributes toxic pollen
3. Item: Windmill
4. Item: Ohm
5. Item: Mehve (Nausicaä's Glider)
6. Item: Fox Squirrel (Also appears in: Castle in the Sky)

Movie: Castle in the Sky

6. Item: Fox Squirrel (Also appears in: Nausicaä)
7. Item: Crystal necklace
8. Item: The Laputian Robot Troopers or Heavenly Troopers
9. Item: Laputa the Castle in the Sky

Movie: My Neighbor Totoro

10. Item: Soot Sprites
11. Item: Daihatsu Midget DK (Car from the beginning of the Movie)
12. Item: Mini Totoro
13. Item: Totoro
14. Item: Catbus

Movie: Grave of the Fireflies

15. Item: Sakuma Drops Candy



Movie: Kiki's delivery service

- 16. Item: Witch Broom
- 17. Item: Radio
- 18. Item: Kiki's red Bow
- 19. Item: Jiji

Movie: Only yesterday

- 20. Item: Taeko's childhood Hair Clip
- 21. Item: Taeko's childhood Randoseru

Movie: Arrietty

- 22. Item: Arrietty's Hair Clip
- 23. Item: Buttons
- 24. Item: Sugar Cube with Ants
- 25. Item: Sho's Note with flower

Movie: The Wind Rises

- 26. Item: Train ride
- 27. Item: Paper Plane

Movie: From Up on Poppy Hill

- 28. Item: Boats
- 29. Item: Umi's flags ("I wish you a pleasant voyage")

Movie: Tales from Earthsea

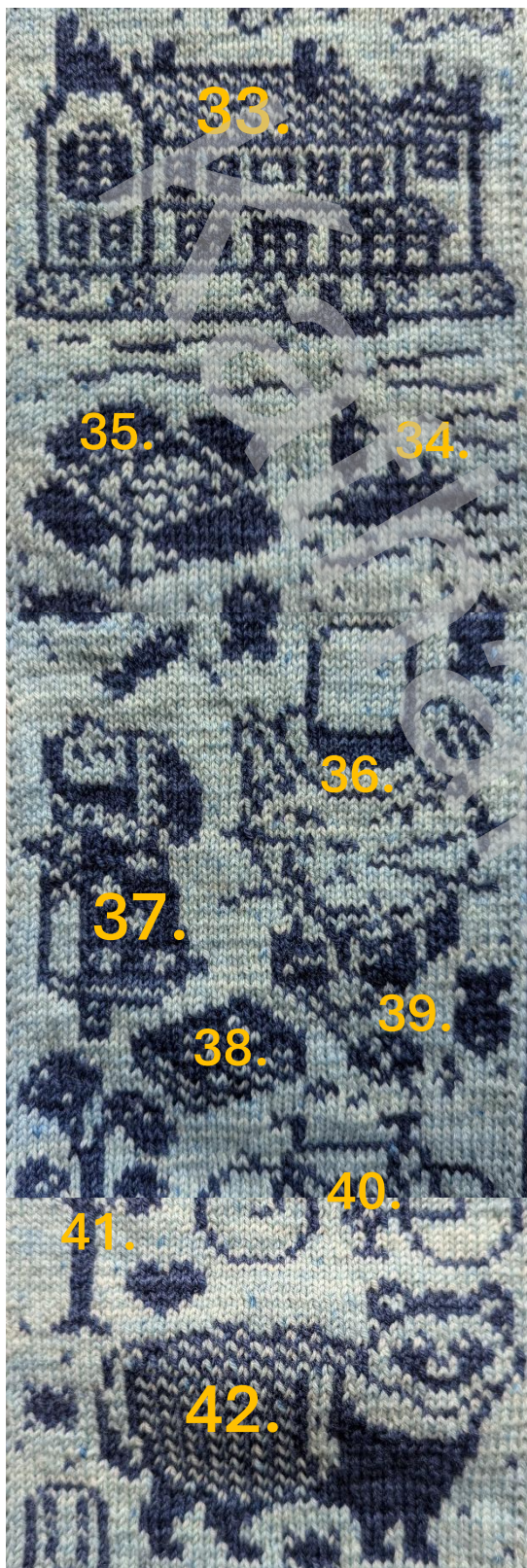
- 30. Item: Arren's Sword

Movie: The Boy and the Heron

- 31. Item: Warawara's

Movie: The Tale of the Princess Kaguya

- 32. Item: Kaguya's hair jewelry



Movie: When Marnie was There

33. Item: The Marsh House

34. Item: Anna and Marnie on the boat

Movie: The Cat Returns

35. Item: Cookie box and fish shaped cookie's scattered

36. Item: Baron (similar cat in: Whisper of the Heart)

Movie: Whisper of the Heart

36. Item: Cat statuette The Baron (In the Movie the statuette looks a little different but the name of both characters are the same so I thought it would be perfect to connect both movies)

37. Item: Prince of the Dwarf (Clock piece)

38. Item: Library Book

39. Item: Antique Shop Gem

40. Item: Seiji's Bike

Movie: Pom Poko

41. Item: Tree

42. Item: Raccoon Dog



End of the Scarf

Movie: Spirited Away

43. Item: No-Face

44. Item: Soot Spirites with Star Candy

45. Item: Mouse Boh and Yu-Bird

Movie: Ponyo

46. Item: Ramen

47. Item: Sosuke's Boat

Movie: Princess Mononoke

48. Item: San's Mask

49. Item: Kodama's

50. Item: Night-Walker

Movie: Howl's Moving Castle

51. Item: Flying Castle (Ending Scene)

52. Item: Calcifer

Movie: Porco Rosso

53. Item: Porco Rosso

54. Item: Porco's plane Savoia S.21

