

# Ambershore

Designed by Inese Sang



---

A top down symmetrical triangular shawl in contrasting colourways featuring  
simple colourwork and bobbles  
Inspired by washed out amber amidst drying algae along the white sandy coastline  
of the Baltic Sea

---

**PATTERN NOTES:** Ambershore is a symmetrical triangular shawl worked from top down. The shawl features easy alternating stockinette and simple stranded colourwork sections with tiny crochet bobbles and is finished with twisted ribbing edge. The colourwork is done on the right as well as wrong side of the project.

**SIZE:** Wingspan (length along the longest edge): 73.5" (186 cm). Depth: 32.5" (83 cm).

**YARN & YARDAGE:** Cosy Posy Yarn Co. Cloud [100% superwash merino; 400 yds (365 m) per 100 gr skein]. Total of three skeins – 1200 yds (1095 m). Contrast Colour 1: Inese, 400 yds (365 m). Contrast Colour 2: Honeycomb, 400 yds (365 m). Contrast Colour 3: Storm, 400 yds (365 m). OR

a single ply fingering weight yarn in:  
Contrast Colour 1: 400 yds (365 m).  
Contrast Colour 2: 400 yds (365 m).  
Contrast Colour 3: 400 yds (365 m).

**NEEDLES:** US 2.5 (3 mm) circulars with 40" (100 cm) cable. (*or size to obtain gauge*)  
US 4 (3.5 mm) circulars with 40" (100 cm) cable. (*or two sizes larger than the needles used to obtain gauge*)  
One US A-0 (2 mm) crochet hook.

**GAUGE:** 20 sts x 38 rows = 4" (10 cm) in stockinette in smaller needles after blocking.

**NOTIONS:** Stitch markers, tapestry needle, blocking tools.

#### ABBREVIATIONS & STITCH GUIDE

**CC1** – contrast colour 1

**CC2** – contrast colour 2

**CC3** – contrast colour 3

**CO** – cast on

**K** – knit

**K1tbl** – knit one st through back loop

**M** – stitch marker

**MB** – make bobble. With crochet hook: insert the hook through the front of next st and lift the st completely off the left hand needle. With the corresponding contrast colour yarn (see individual charts): Chain 2. \*Pick yarn over hook as a yarn over. Insert the hook into the original knit st and pull up a loop through the original knit st. Repeat from \* 2 more times. You will now have 7 sts on the crochet hook. Pick the yarn and pull through all 7 loops on the hook. *Place the stitch back on the left hand needle. With the second corresponding contrast yarn – K1 and proceed in pattern.*

Please refer to the link below for a technique to make a bobble. *Note, the placement and finishing of the bobble differs from the video. Refer to the instructions in italics above for correct finishing.*

<https://www.youtube.com/watch?v=ClpKftuRGc4>

**M1L** – make one st leaning left

**M1R** – make one st leaning right

**P** – purl

**PM** – place stitch marker

**P1tbl** – purl one st through back loop

**Rep** – repeat

**RS** – right side

**SM** – slip stitch marker

**st / sts** – stitch / stitches

**WS** – wrong side

#### PATTERN STARTS

**GARTER TAB CAST ON:** With smaller needles and CC1  
CO 4 sts.

K 8 rows.

Turn work 90° and pick up 4 sts along the edge.

Turn work again 90° and pick up 4 sts along the edge.

You will now have 12 sts on your needle.

#### SET-UP ROW

K4. PM. K1. PM. K2. PM. K1. PM. K4. (12 sts)

### SINGLE COLOUR PANEL IN CC1

**Row 1 (RS):** K4. SM. M1L. K to M. M1R. SM. K2. SM. M1L. K to M. M1R. SM. K4. (16 sts)

**Row 2 (WS):** K4. SM. P to M. SM. P2. SM. P to M. SM. K4.

Rep Row 1 – Row 2 for 45 more times.

Stitch Count Checklist (in increments of 5 repeats)

**Row 3 – Row 12** (36 sts)

**Row 13 – Row 22** (56 sts)

**Row 23 – Row 32** (76 sts)

**Row 33 – Row 42** (96 sts)

**Row 43 – Row 52** (116 sts)

**Row 53 – Row 62** (136 sts)

**Row 63 – Row 72** (156 sts)

**Row 73 – Row 82** (176 sts)

**Row 83 – Row 92** (196 sts)

### COLOURWORK PANEL 1

*Change to larger size needles.*

Work **CHART 1A**, **CHART 1B** and **CHART 1C** from page 4 following the side and central increases as established.

**CHART 1A: Row 93 – Row 100** (212 sts) Break CC3

**CHART 1B: Row 101 – Row 108** (228 sts)

**CHART 1C: Row 109 – Row 117** (248 sts)

Break CC1 and CC3

### SINGLE COLOUR PANEL IN CC2

*Change to smaller size needles.*

With CC2.

**Row 118 (WS):** Rep Row 2.

**Row 119 (RS) – Row 148:** Rep Row 1 – Row 2.

Stitch Count Checklist (in increments of 5 repeats)

**Row 119 – Row 128** (268 sts)

**Row 129 – Row 138** (288 sts)

**Row 139 – Row 148** (308 sts)

### COLOURWORK PANEL 2

*Change to larger size needles.*

Work **CHART 2A**, **CHART 2B** and **CHART 2C** from page 5 following the side and central increases as established.

**CHART 2A: Row 149 – Row 156** (324 sts) Break CC1

**CHART 2B: Row 157 – Row 164** (340 sts)

**CHART 2C: Row 165 – Row 173** (360 sts)

Break CC2 and CC1

### SINGLE COLOUR PANEL IN CC3

*Change to smaller size needles.*

With CC3.

**Row 174 (WS):** Rep Row 2.

**Row 175 (RS) – Row 194:** Rep Row 1 – Row 2.

Stitch Count Checklist (in increments of 5 repeats)

**Row 175 – Row 184** (380 sts)

**Row 185 – Row 194** (400 sts)

### COLOURWORK PANEL 3

*Change to larger size needles.*

Work **CHART 3A**, **CHART 3B** and **CHART 3C** from page 6 following the side and central increases as established.

**CHART 3A: Row 195 – Row 202** (416 sts) Break CC2

**CHART 3B: Row 203 – Row 210** (432 sts)

**CHART 3C: Row 211 – Row 219** (452 sts)

Break CC3 and CC2

### END PANEL

*Change to smaller size needles.*

With CC1.

**Row 220 (WS):** Rep Row 2.

Break CC1. Join CC3.

**Row 221 (RS):** Rep Row 1. (456 sts)

**Row 222:** K4. SM. [P1tbl. K1.] Rep [ ] to last st before M. P1tbl. SM. P1tbl x 2. SM. P1tbl. [K1. P1tbl.] Rep [ ] to M. SM. K4.

Break CC3. Join CC2.

**Row 223:** K4. SM. K to last st before M. K1tbl. SM. K1tbl x 2. SM. K1tbl. K to M. SM. K4. (no increases)

**Row 224:** Rep Row 222.

**Row 225:** K4. SM. [K1tbl. P1.] Rep [ ] to last st before M. K1tbl. SM. K1tbl x 2. SM. K1tbl. [P1. K1tbl.] Rep [ ] to M. SM. K4. (no increases)

**Row 226:** Rep Row 222. Bind off loosely in pattern.

Weave in the ends and block to finished measurements.

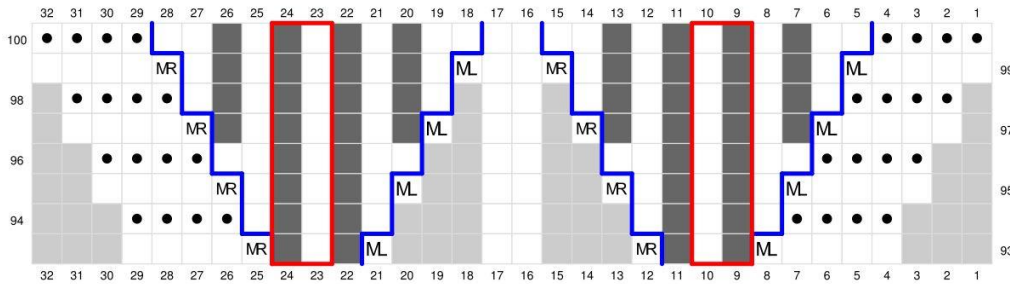
## COLOURWORK PANEL 1

Read all RS rows from right to left and all WS rows from left to right.

For optimal colour dominance make sure to hold dominant colour **below** and background colour **above**.

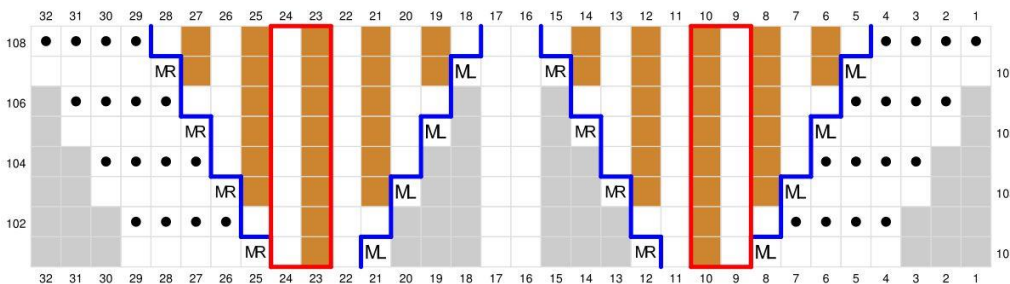
### CHART 1A

CC3 – dominant colour, CC1 – background colour



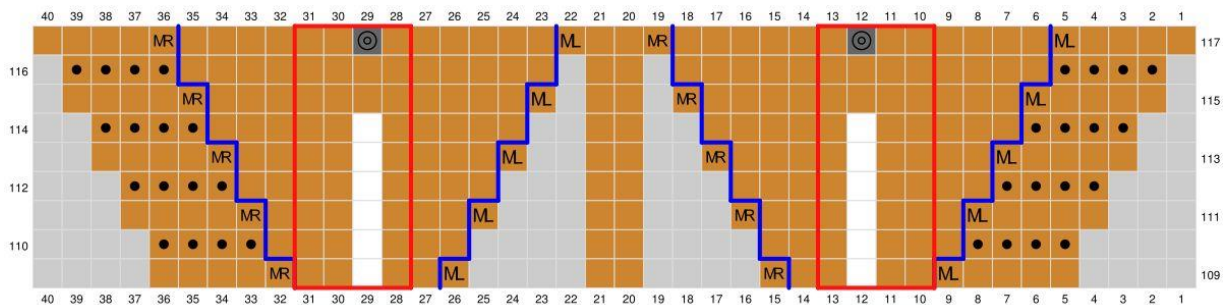
### CHART 1B














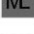




CC1 – dominant colour, CC2 – background colour



### CHART 1C

CC1 – dominant colour, CC2 – background colour, CC3 (bobble) – dominant colour



-  Knit on RS, Purl on WS (in CC1)
-  Purl on RS, Knit on WS (in CC1)
-  Make one right (in CC1)
-  Make one left (in CC1)
-  MB (in CC1)
-  Knit on RS, Purl on WS (in CC2)
-  Purl on RS, Knit on WS (in CC2)
-  Make one right (in CC2)
-  Make one left (in CC2)
-  MB (in CC2)
-  Knit on RS, Purl on WS (in CC3)
-  Purl on RS, Knit on WS (in CC3)
-  Make one right (in CC3)
-  Make one left (in CC3)
-  MB (in CC3)
-  No stitches
-  Repeat
-  Side increase



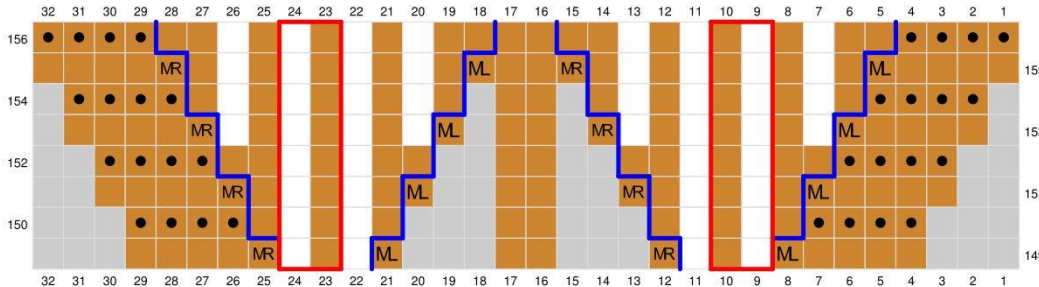
## COLOURWORK PANEL 2

Read all RS rows from right to left and all WS rows from left to right.

For optimal colour dominance make sure to hold dominant colour **below** and background colour **above**.

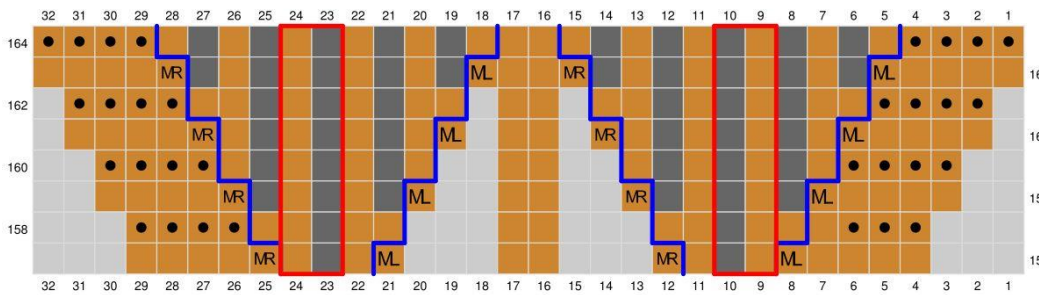
### CHART 2A

CC1 – dominant colour, CC2 – background colour



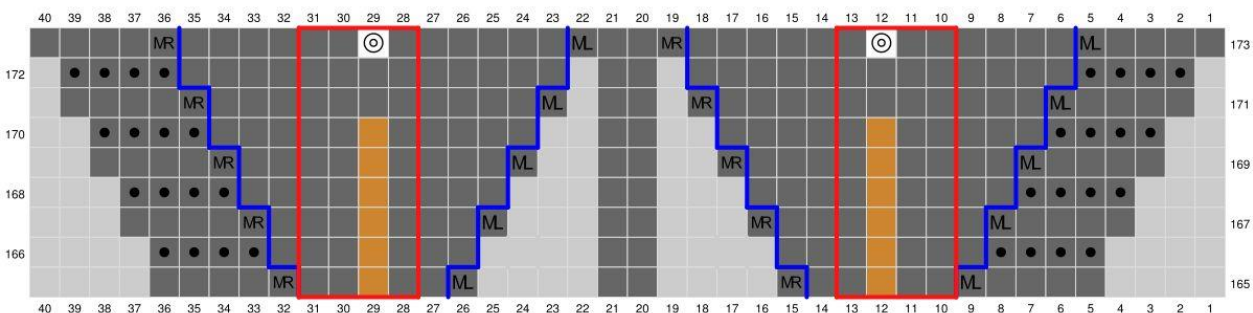
### CHART 2B

CC2 – dominant colour, CC3 – background colour



### CHART 2C

CC2 – dominant colour, CC3 – background colour, CC1 (bobbles) – dominant colour



- Knit on RS, Purl on WS (in CC1)
- Purl on RS, Knit on WS (in CC1)
- Make one right (in CC1)
- Make one left (in CC1)
- MB (in CC1)
- Knit on RS, Purl on WS (in CC2)
- Purl on RS, Knit on WS (in CC2)
- Make one right (in CC2)
- Make one left (in CC2)
- MB (in CC2)
- Knit on RS, Purl on WS (in CC3)
- Purl on RS, Knit on WS (in CC3)
- Make one right (in CC3)
- Make one left (in CC3)
- MB (in CC3)
- No stitches
- Repeat
- Side increase

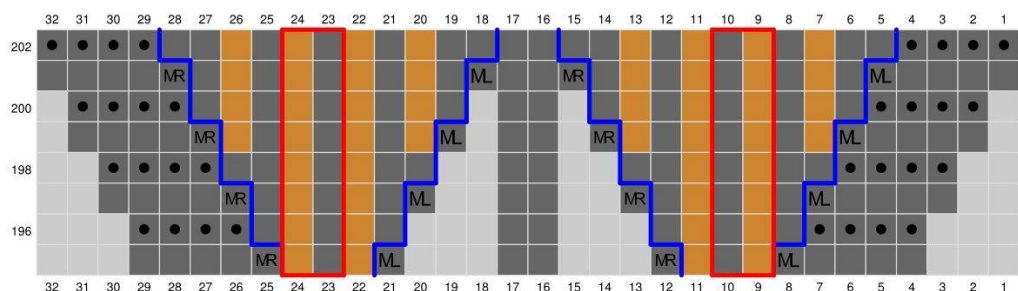
### COLOURWORK PANEL 3

Read all RS rows from right to left and all WS rows from left to right.

For optimal colour dominance make sure to hold dominant colour **below** and background colour **above**.

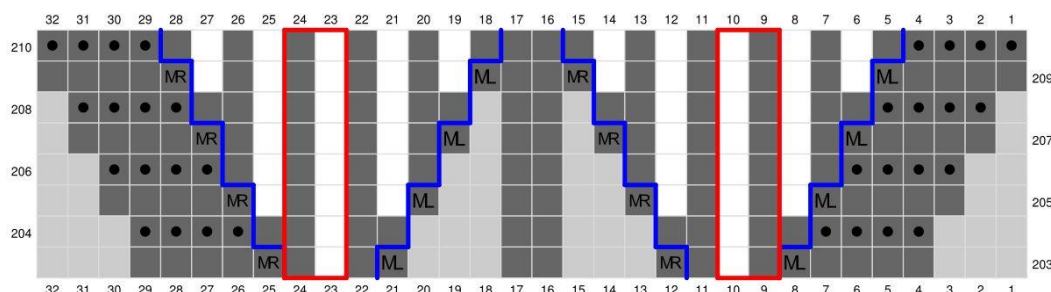
#### CHART 3A

CC2 – dominant colour, CC3 – background colour



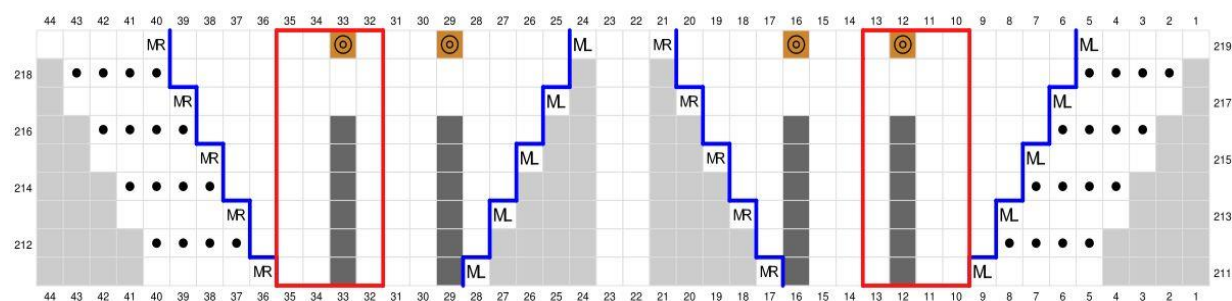
#### CHART 3B

CC3 – dominant colour, CC1 – background colour



#### CHART 3C

CC3 – dominant colour, CC1 – background colour. CC2 (bobbles) – dominant colour



- Knit on RS, Purl on WS (in CC1)
- Purl on RS, Knit on WS (in CC1)
- Make one right (in CC1)
- Make one left (in CC1)
- MB (in CC1)
- Knit on RS, Purl on WS (in CC2)
- Purl on RS, Knit on WS (in CC2)
- Make one right (in CC2)
- Make one left (in CC2)
- MB (in CC2)
- Knit on RS, Purl on WS (in CC3)
- Purl on RS, Knit on WS (in CC3)
- Make one right (in CC3)
- Make one left (in CC3)
- MB (in CC3)
- No stitches
- Repeat
- Side increase

## USEFUL TIPS

- For best visual results use three high contrast colourways.
- Please, take your time swatching and besides knitting a gauge swatch in stockinette, knit also a swatch in colourwork to practice stranded knitting on both sides of the project and making bobbles. It takes a bit of practice to get the bobbles even and same size. Work the bobbles in looser tension to obtain a "plump" look. For this second swatch use the scrap yarn left over from your other projects to practice, because the shawl pattern consumes almost all the yardage of the indicated yarn.
- To block the shawl in the desired shape, blocking wires are recommended. Start with placing blocking wires along the wingspan (the longest side) to obtain straight line and stretching it to the indicated measurements. Then proceed to place the blocking wires for the both sides of the shawl.



Thank you very much for purchasing Ambershore pattern.  
I hope you enjoy knitting it as much as I enjoyed creating it.

I would love to see your works in progress and finished projects. If you are on Instagram, you are welcome to share your project updates with **#ambershoresawl** and tag me **@isangknits**. Or create a project page on Ravelry.

If you have any questions, suggestions or just want to say hi, you can always contact me via email, Instagram or Ravelry.  
Happy knitting and happy wearing!



#ambershoresawl  
Ravelry: inesesang  
Payhip: Isang Knits  
Instagram: @isangknits  
Email: [isangknits@gmail.com](mailto:isangknits@gmail.com)

All content & images © 2019, Inese Sang. All rights reserved. You may not sell, copy or distribute this pattern in any format. Pattern support: [isangknits@gmail.com](mailto:isangknits@gmail.com)