



Tursiops

Tursiops is knit in the round from the bottom up, and includes a bottlenose dolphin motif and Latvian braids.

Sizes depend on chart used and gauge. Choose desired size, then determine needle size to get required gauge. Use chart that corresponds with your size.

Sizes and Gauges

Size	Circumference (inches)	Gauge (stitches/inch)	Recommended Needle size	Chart Stitches	Cast On (stitches)
Child	20.5	7	US3/3.25mm	144	128
Women's Small	21.5	7	US3/3.25mm	150	132
Women's Medium	22	6.5	US4/3.5mm	144	128
Women's Large	23	6.5	US4/3.5mm	150	132

Materials

- Fingering weight wool or wool blend in the following amounts:

Size	Main Color (yards)	Contrasting Color (yards)
Child	120	90
Women's Small	150	100
Women's Medium	160	110
Women's Large	165	120

For the larger size, I used [Cascade Heritage](#) in colors *China Blue* and *Snow*. For the smaller size, I used [Cascade Heritage](#) in colors *Crocus* and *Forged Iron*.

- Size US1.5/2.5mm 16-inch-long circular needle
- Size US3/3.25mm OR US4/3.5mm 16-inch-long circular needle OR size needed for your gauge
- Set of double pointed needles or long circular needle (for Magic Loop) in size needed for your gauge
- Stitch marker
- Tapestry needle for weaving in ends

Stitches and Abbreviations

- M1 (Make 1) – Increase. Insert left needle, from front to back, under strand between stitch just worked and next stitch and place it on left needle. Knit into the back of this strand.
- Latvian Braid (Left pointing)
 - Round 1: *Knit 1 Main Color, Knit 1 Contrasting Color 1. Repeat from * to end.
 - Round 2: Bring both yarns to front of work. *Purl 1 Main Color, bring Contrasting Color over Main Color, Purl 1 Contrasting Color. Bring Main Color over Contrasting Color. Repeat from* to end. Yarns will twist around each other.
 - Round 3: Bring both yarns to front. *Purl 1 Main Color, bring Contrasting Color under Main Color, Purl 1 Contrasting Color. Bring Main Color under Contrasting Color. Repeat from * to end. Yarns will un-twist.
 - To make right pointing braid, switch order of Rounds 2 and 3.*
- Double Decrease – Decrease of two stitches. Slip one stitch knitwise, knit 2 together, pass slipped stitch over.

Instructions

Ribbing

Using smaller needle, Main Color, and Long-Tail Cast-On (or other stretchy cast-on), cast on 128 stitches for Child/Woman's Medium sizes OR 132 stitches for Woman's Small/Large sizes. Join for working in the round, and place marker for beginning of round. Work 6 rounds of 2x2 rib.

Increase Round

Switch to larger needle.

For Sizes Child/Woman's Medium: *Knit 8, M1. Repeat to end of round. (144 stitches)

For Sizes Woman's Small/Large: *K7, M1, K7, M1, K8, M1. Repeat to end of round. (150 stitches)

Latvian Braid

Attach Contrasting Color.

Work right or left pointing Latvian Braid as preferred.

Dolphin Chart

For Child/Woman's Medium Sizes: Work each dolphin chart row 3 times per round.

For Women's Small/Large Sizes: Work dolphin chart.

Second Latvian Braid

Work the second Latvian Braid as preferred.

Crown

For Child/Woman's Medium Sizes: Work each Crown row on chart 6 times per round.


For Women's Small/Large Sizes: Work Crown chart.

Switch to double pointed needles or Magic Loop as needed.

Finishing

Cut yarns, thread through live stitches, and pull to close top of hat. Weave in ends and block.

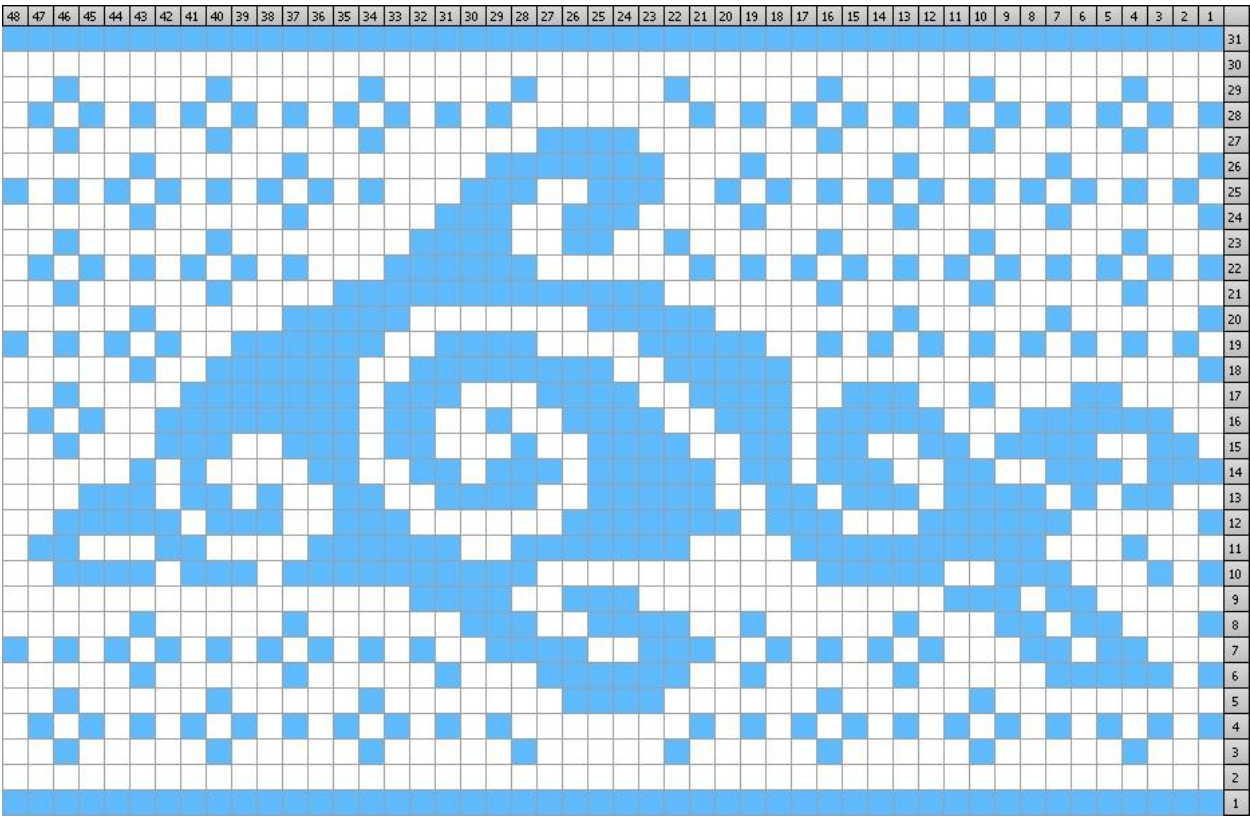
KEY

- ☐ Knit One Contrasting Color
- ☒ Knit One Main Color
-  Double Decrease - Main Color

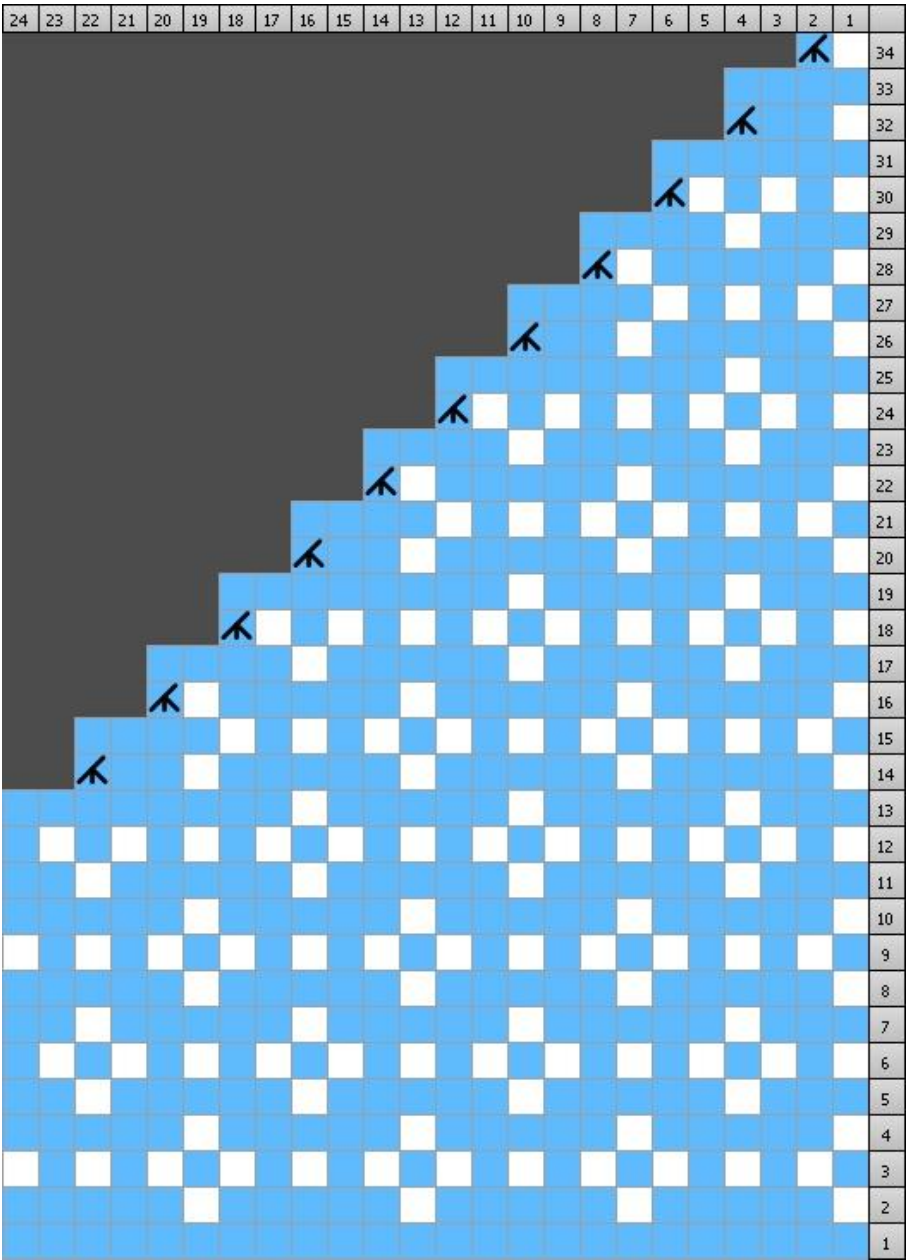
Note that the Woman's Small/Large Size charts are split onto two pages.



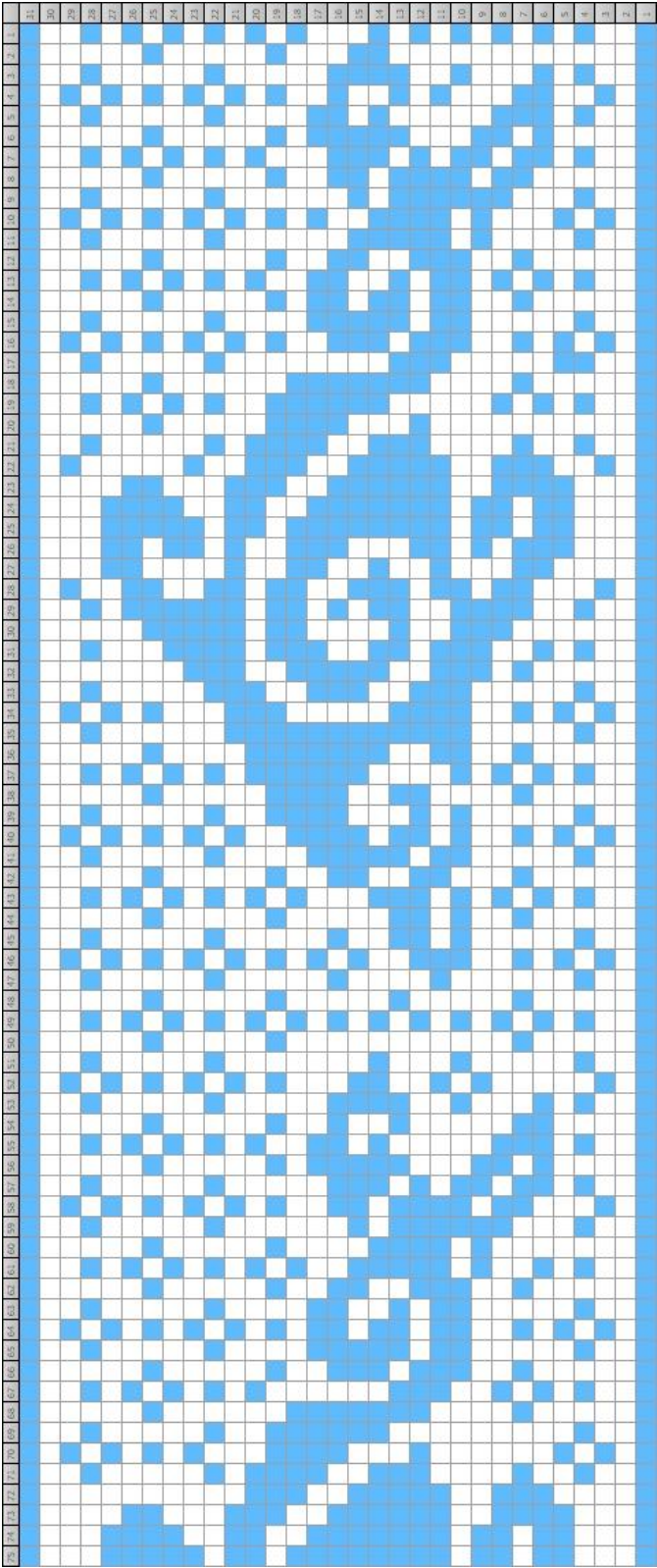
SIZES CHILD/WOMAN'S MEDIUM DOLPHIN CHART

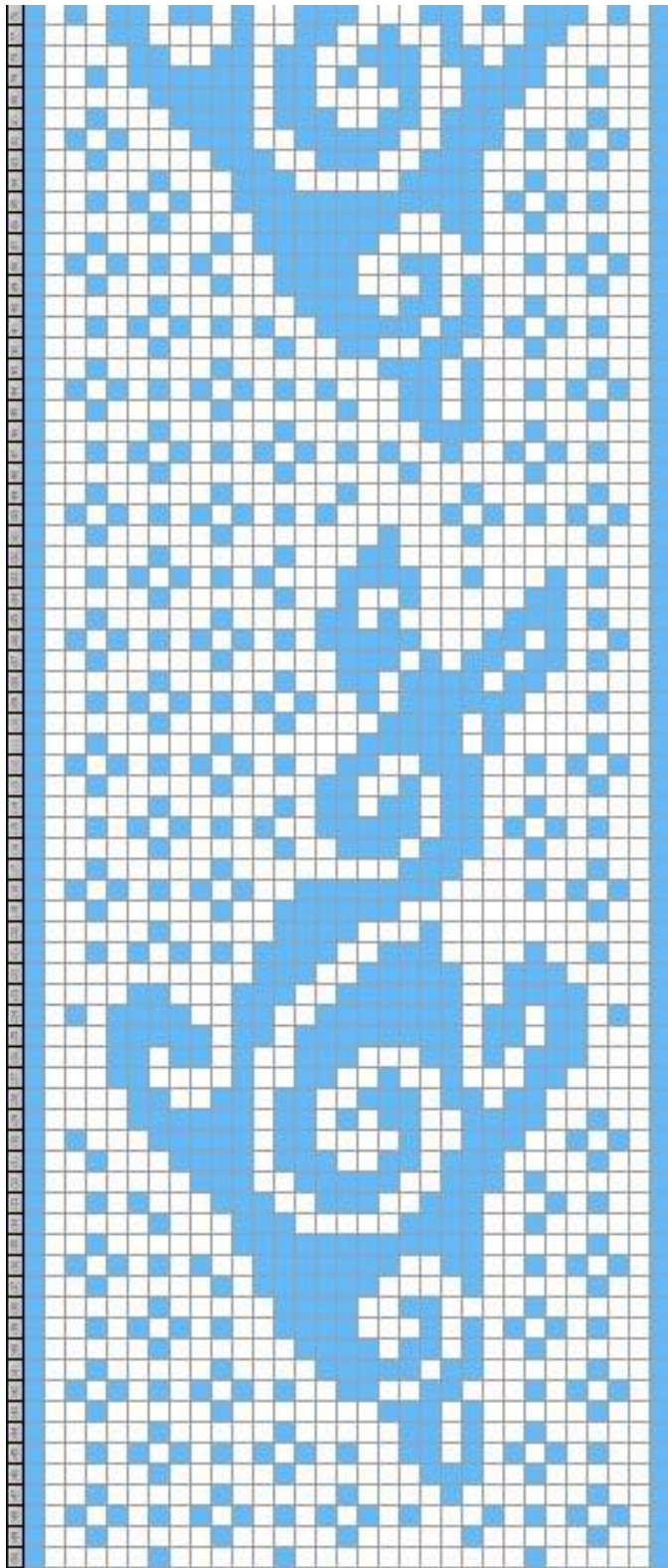


SIZES CHILD/WOMAN’S MEDIUM CROWN CHART

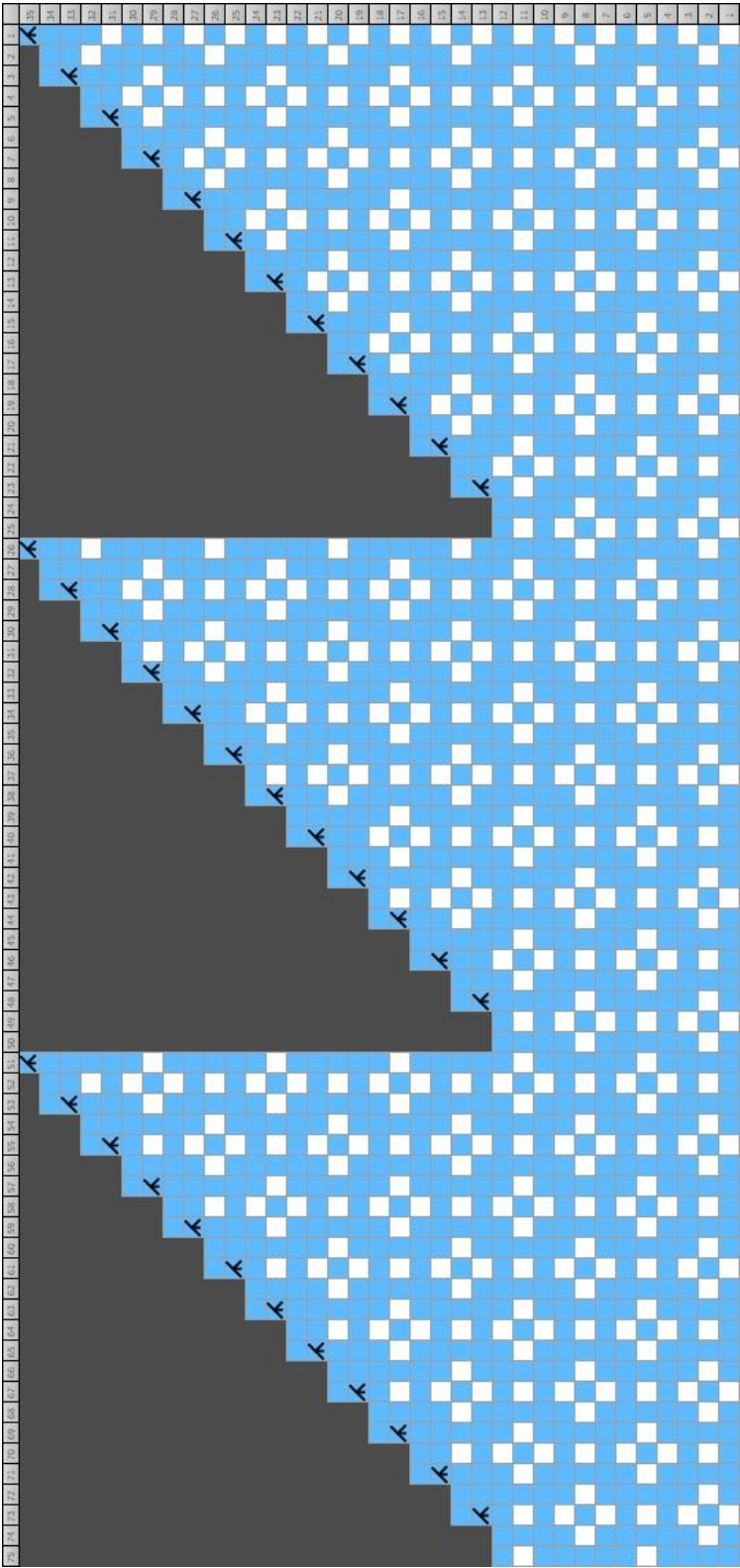


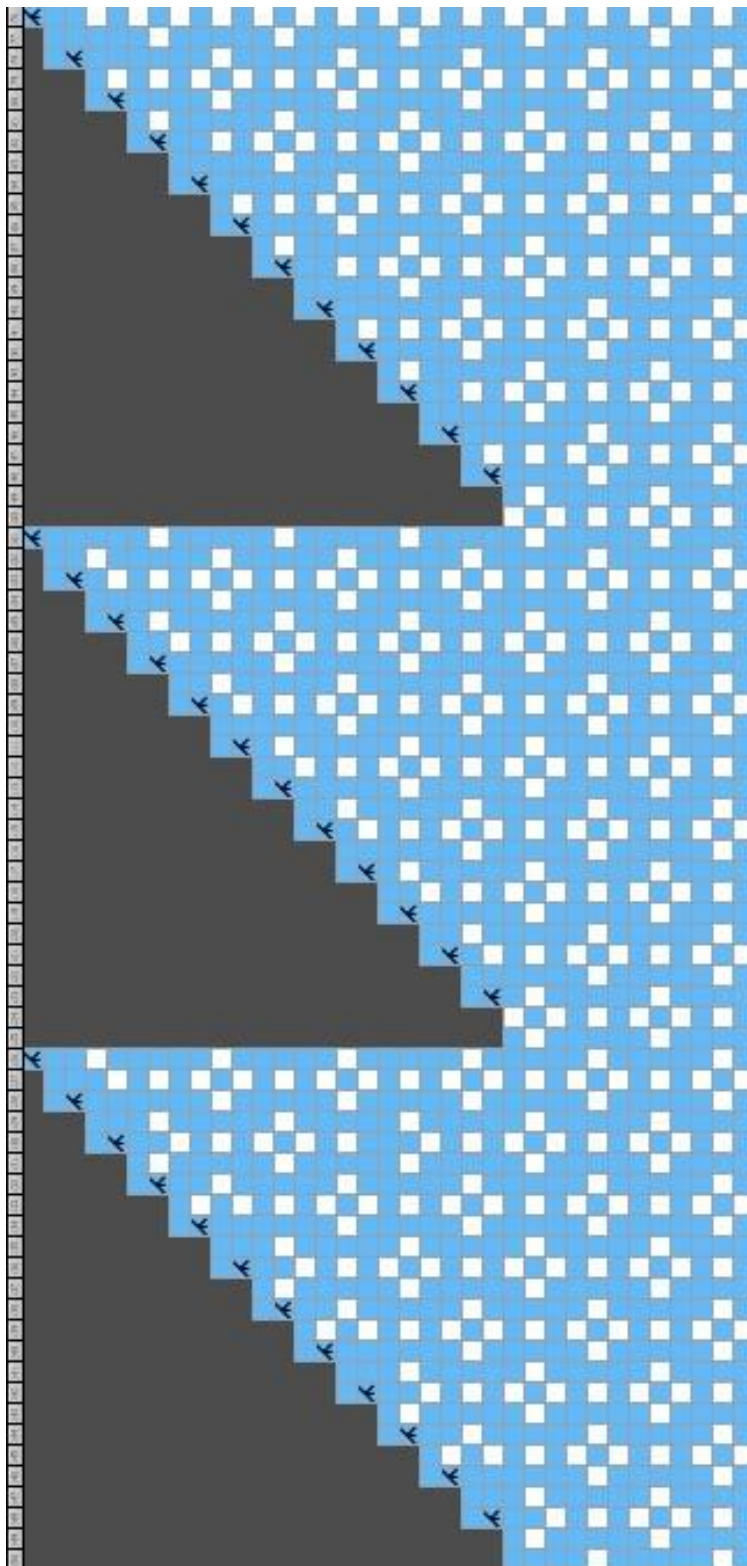
SIZES WOMAN’S SMALL/LARGE DOLPHIN CHART





SIZES WOMAN’S SMALL/LARGE CROWN CHART





Please contact me at tara@megapteraknits.com or on [Ravelry](#) for questions, comments or pattern errors.

