

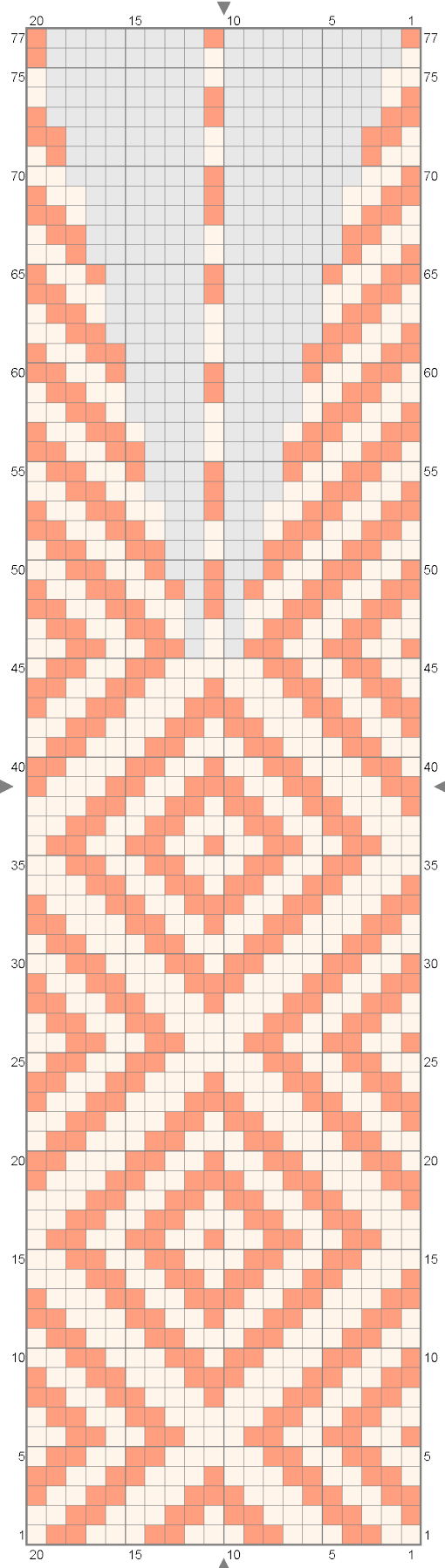


# Olu's hat from Our Flag Means Death

CC by Leili - NC

	natural white
	orange



Gauge: 7,5 stitches and 9 rows to one inch

2,5 mm knitting needles

Pattern: 20 x 20 stitches

Yarn: 100% wool in 8/2 thickness,

or that has 400 meters / 437 yards per 100 grams / fingering

Sample hat (sz L) used ca 30 grams of each colour.

For size L, cast on 180 stitches (fits a 23" head)

For size M, cast on 160 stitches (fits a 21" head)

For size S, cast on 140 stitches (will make a hat with ca 18" circumference). Remember: wool can be blocked larger but is harder to shrink to size in a controlled measure. If you're between sizes, try to adjust with needle size.

Cast on with orange, join and knit in the round. I did it on magic loop but sock needles will also work.

Knit 1" plain for brim. If you wish it to lessen rolling after the brim, make one round of knit 2 purl 2.

Commence according to chart.

On row 46 stitch 11, use either white or orange according to whatever keeps the pattern neatest in your opinion. In my case the decreases covered the stitch underneath which made the stitch colour underneath each decrease unimportant.

Make decreases as following: slip one stitch, knit 2 together, pass slip stitched over. This "piles" two stitches onto the stitch nr 11, the "top rhombus stitch" which makes a slightly textured bump in a neat row that the knitter for the show chose!

Decrease until you have 9 stitches on needles and knit a "bump" in orange consisting of ca 8 rows. Take off needles and thread end of yarn throw every stitch and pull together. Fasten on wrong side.

I padded my bump with long ends of the yarn, so that the hat would have an inbuilt stash of mending yarn, but this is not necessary.

Block and soften the shape of the crown.

For an instantly distressed look, soap the hat up in a wash and gently raise a pile with a scotch brite sponge. Be very careful not to overdo it as this may cause the hat to shrink! Rinse and dry!

Historical notes: the costummaker may or may not have used this as a model for their design!

<https://www.rijksmuseum.nl/en/search/objects?q=muts+gebreid&p=3&ps=12&st=Objects&ii=0#/BK-KOG-16,18>

Known yarns with correct thickness:

"Gotlandsgarn 2" <http://www.ylletinredning.se/> "2ply lace weight" by Jamieson & Smith

"8/2 Wool Yarn" <https://www.ullcentrum.com/>