



# SYLPHE

by Natasja Hornby

SHINE IS MY FAVORITE COLOR

Embark on a knitting adventure with Sylphe – a gorgeous shawl that weaves a tale of beauty! Watch the leaf pattern transform into an extravagant flowery border, guided by the carefully described techniques in the pattern and a helpful video tutorial. The heart-shaped design ensures effortless style, bringing a smile to your face even on the dreariest days. Get ready to knit your own fairytale with Sylphe – where creativity meets elegance!





## TECHNICAL INFORMATION

### CONSTRUCTION

Sylphe is a triangular heart-shaped shawl that is worked top-down from the center out, starting with a classic Garter Tab cast on. The eye-catching, graceful leaf and flower patterns are created by pulling loops through the fabric. The pattern provides detailed instructions, and you can also refer to the Moonstruck Knits video tutorial for additional guidance on creating Sylphe.

### SIZES

#### One size

Wingspan approx 205 cm / 80.75".

Depth approx 70 cm / 27.5".

### YARN

Approx 1150 m / 1250 yards of a sport weight yarn.

Sample shown in Rowan Felted Tweed, 50% Wool, 25% Alpaca and 25% Viscose, 175 m / 190 yards per 50 gr.

Colorway sample: Sulfur.

### NEEDLES

#### Needle A

One 100 cm / 40" (or longer) circular needle in size needed to obtain gauge listed.

Suggested needle size: 3.5 mm / US #4.

### GAUGE

Measured after blocking.

Loopy leaf pattern on Needle A: 19 sts x 30 rows = 10 x 10 cm / 4 x 4".

Loopy flower pattern on Needle A: 19 sts x 34 rows = 10 x 10 cm / 4 x 4".

### NOTIONS

Stitch markers, crochet hook 3.5 mm / size E, tapestry needle, blocking tools.

### STITCH PATTERNS

The stitch patterns described below are for swatching purposes only. When working on the shawl, follow the directions given for the various sections.

For demonstrations of the stitch patterns and working the Charts, please refer to the Moonstruck Knits video on Sylphe.

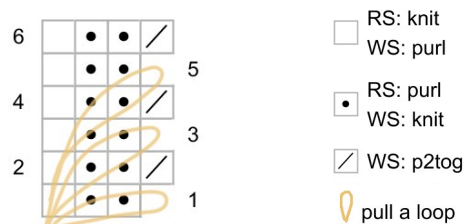
[Moonstruck Knits | Sylphe shawl | Tutorial loopy leaves & loopy flowers \(youtube.com\)](#)

#### Loopy Leaf Pattern

For your swatch CO 21 sts (17 sts for the pattern, and 2 sts for both edges). The Leaf Facing Right is worked differently from the Leaf Facing Left. Work the leaves as follows.

#### Leaf Facing Right

(the chart below only reflects the leaf portion of the pattern).



**Set up row 1 (RS):** k3, p5, k1, p5, k3.

**Set up row 2 (WS):** k2, p1, k5, p1, k5, p1, k2.

**Row 1:** k3, (p3, yarn to the back, pull a loop by inserting your RH needle in the center of the first st beneath the 3rd st on your LH needle. Wrap the yarn kwise and pull through. Place the loop on your LH needle and knit it, p2, k1) twice, k2.

**Row 2:** k2, (p1, k2, p2tog, k2) twice, p1, k2.

**Row 3:** k3, (p3, yarn to the back, pull a loop by inserting your RH needle in the same st you pulled a loop from in Row 1. Wrap the yarn kwise and pull through. Place the loop on your LH needle and knit it, p2, k1) twice, k2.

**Row 4:** work as Row 2.



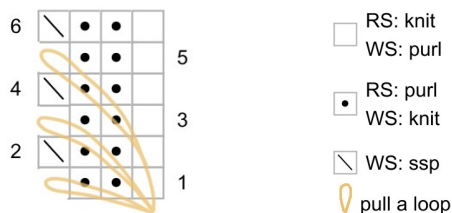
**Row 5:** work as Row 3.

**Row 6:** work as Row 2.

Continue your swatch by working the Leaf Facing Left.

### Leaf Facing Left

(the chart below only reflects the leaf portion of the pattern).



**Row 1:** k3, (p2, yarn to the back, pull a loop by inserting a crochet hook in the center of the first st beneath the third st on your RH needle. Pull the yarn through, place the loop on your LH needle and knit it, p3, k1) twice, k2.

**Row 2:** k2, (p1, k2, ssp, k2) twice, p1, k2.

**Row 3:** k3, (p2, yarn to the back, pull a loop by inserting a crochet hook in the center of the same st you pulled a loop from in Row 1. Pull the yarn through, place the loop on your LH needle and knit it, p3, k1) twice, k2.

**Row 4:** work as Row 2.

**Row 5:** work as Row 3.

**Row 6:** work as Row 2.

### Loopy Flower Pattern

For your swatch, CO 29 sts (25 sts for the Chart and 2 sts for both edges). Start and end every row with 2 knit sts. Those 2 edge sts are not charted.

Work the pattern as follows.

Work Row 1-10 of the Chart.

Work Row 11 of the Chart to the orange dot (= 6 sts). Now, you are going to pull loops through the eyelets of the previous rows.

**Step 1:** insert your RH needle from front to back through eyelet 1a. Wrap the yarn twice, and pull a loop. Place the loop on your LH needle and knit it. Repeat for eyelet 1b, 1c and 1d.

**Step 2:** knit 1, you have now arrived at the second orange dot.

**Step 3:** repeat the instructions of Step 1 for eyelets 2a, 2b, 2c and 2d.

**Step 4:** work the Chart to the next orange dot.

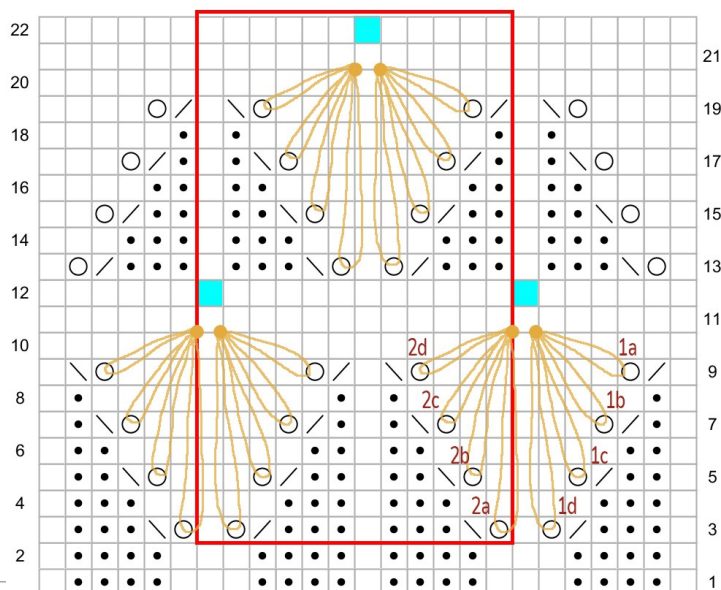
Repeat Step 1-4 according to the Chart.

**Step 5:** work Row 12 (WS) of the Chart until the blue square.

**Step 6:** purl 9 sts together.

**Step 7:** turn your work so the RS is facing you, and knit the first st on your LH needle through the back loop.

### LOOPY FLOWER CHART





**Step 8:** turn your work again, and slip the first st on your LH needle to your RH needle.

Work Step 5-8 until the end of the row.

Next, work Row 13-20 of the Chart and repeat the instructions for the Loopy Flowers.

For pattern support and possible errata, please go to the Sylphe thread in my group on Ravelry

[Ravelry: Moonstruck Knits by Natasja Hornby discussion topic - Pattern Questions - Sylphe](#)



## DIRECTIONS

### SHAWL BODY

#### Garter Tab Cast On

With Needle A, CO 3 sts.

Knit 14 rows (7 garter ridges).

Turn the garter tab 90 degrees clockwise and PU and k 7 sts (1 st in every garter ridge) along the long edge of the Garter Tab. Turn your work 90 degrees and PU and k 3 sts in the CO edge; 13 sts.

**Next row** (WS): k4, p1, k1, pm, p1, pm, k1, p1, k4.

### Rib Pattern

**Row 1** (RS): k2, kfbf, p1, k1, p1, M1pR, slm, k1, slm, M1pL, p1, k1, p1, kfbf, k2; 19 sts.

**Row 2** (WS): k6, p1, k2, slm, p1, slm, k2, p1, k6.

**Row 3:** k2, kfbf, p3, k1, p2, M1pR, slm, k1, slm, M1pL, p2, k1, p3, kfbf, k2; 25 sts.

**Row 4:** k8, p1, k3, slm, p1, slm, k3, p1, k8.

**Row 5:** k2, kfbf, p5, k1, p3, M1pR, slm, k1, slm, M1pL, p3, k1, p5, kfbf, k2; 31 sts.

**Row 6:** k4, p1, k5, p1, k4, slm, p1, slm, k4, p1, k5, p1, k4.



**Row 7:** k2, kfbf, p1, k1, p5, k1, p4, M1pR, slm, k1, slm, M1pL, p4, k1, p5, k1, p1, kfbf, k2; 37 sts.

**Row 8:** k6, (p1, k5) twice, slm, p1, slm, (k5, p1) twice, k6.

**Row 9:** k2, kfbf, p3, (k1, p5) twice, M1R, slm, k1, slm, M1L, (p5, k1) twice, p3, kfbf, k2; 43 sts.

**Row 10:** k8, (p1, k5) twice, p1, slm, p1, slm, p1, (k5, p1) twice, k8.

**Row 11:** k2, kfbf, (p5, k1) three times, M1pR, slm, k1, slm, M1pL, (k1, p5) three times, kfbf, k2; 49 sts.

**Row 12:** k4, (p1, k5) three times, p1, k1, slm, p1, slm, k1, p1, (k5, p1) three times, k4.

### Rib Chart

Next, work the Rib Chart as follows.

**RS rows:** work Chart A to m, slm, work center st, slm, work Chart B to end.

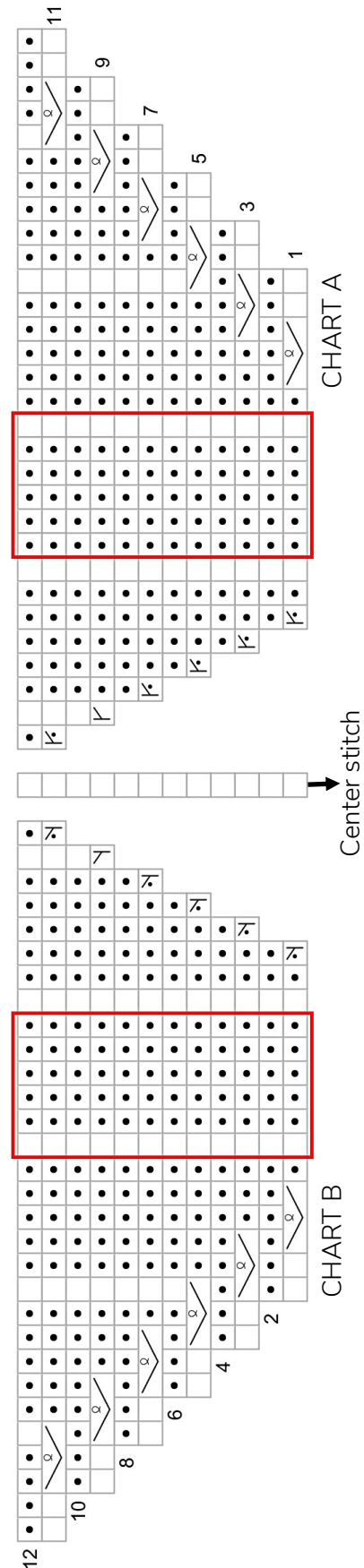
**WS rows:** work Chart B to m, slm, work center st, slm, work Chart A to end.

After working the Chart you have 85 sts on your needle.

Work the Rib Chart once more; 121 sts.



### RIB CHART





## Working the Leaf Charts

Work Leaf Chart 1 & 2 to the denotation for a Leaf Facing Right / Left. Then, work the Chart for a Leaf Facing Right, or the Chart for a Leaf Facing Left.

### Leaf Facing Right

Work the Chart for a Leaf Facing Right as follows.

**Row 1:** yarn to the back, pull a loop by inserting your RH needle in the center of the first st beneath the 3rd st on your LH needle. Wrap the yarn kwise and pull through. Place the loop on your LH needle and knit it, p2, k1.

**Row 2:** p1, k2, p2tog.

**Row 3:** yarn to the back, pull a loop by inserting your RH needle in the same st you pulled a loop from in Row 1. Wrap the yarn kwise and pull through. Place the loop on your LH needle and knit it, p2, k1.

**Row 4:** p1, k2, p2tog.

**Row 5 & 6:** work as Row 3 & 4.

### Leaf Facing Left

Work the Chart for a Leaf Facing Left as follows.

**Row 1:** k1, p2, yarn to the back, pull a loop by inserting a crochet hook in the center of the first st beneath the 3rd st on your RH needle. Pull the yarn through, place the loop on your LH needle and knit it.

**Row 2:** ssp, k2, p1.

**Row 3:** k1, p2, yarn to the back, pull a loop by inserting a crochet hook in the same st you pulled a loop from in Row 1. Pull the yarn through, place the loop on your LH needle and knit it.

**Row 4:** ssp, k2, p1.

**Row 5 & 6:** work as Row 3 & 4.

### Leaf Charts, Tier 1

Next, work Leaf Chart 1 on page 7.

**RS rows:** work Chart A to m, slm, work center st, slm, work Chart B to end.

**WS rows:** work Chart B to m, slm, work center st, slm, work Chart A to end.

After working the Chart you have 157 sts on your needle.

Next, work the **Rib Chart** on page 5; 193 sts.

Next, work **Leaf Chart 1** on page 7; 229 sts.

### Leaf Charts, Tier 2

Next, work the Leaf Chart 2 on page 7.

**RS rows:** work Chart A to m, slm, work center st, slm, work Chart B to end.

**WS rows:** work Chart B to m, slm, work center st, slm, work Chart A to end.

After working the Chart you have 265 sts on your needle.

Work **Leaf Chart 2** twice more; 337 sts.

Next, work Row 1-6 of **Leaf Chart 1**; 355 sts.

Next, work Row 7-10 of the **Rib Chart** on page 5; 367 sts.





LEAF CHART 1

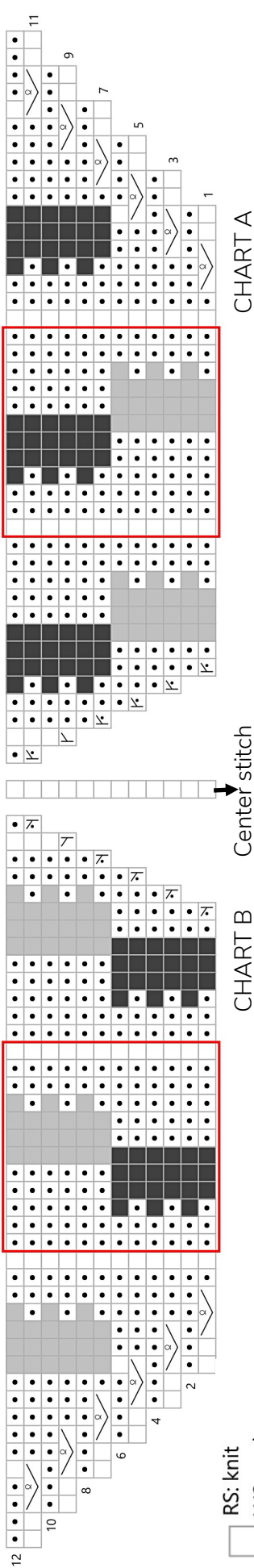


CHART A

CHART B

Center stitch

RS: knit  
WS: purl

RS: purl  
WS: knit

M1pR

M1pL

M1R

M1L

Repeat

leaf facing right

leaf facing left

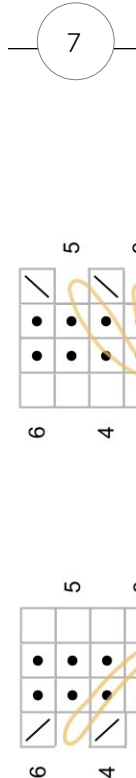
p2tog

ssp

pull a loop

LEAF FACING LEFT

LEAF FACING RIGHT



LEAF CHART 2

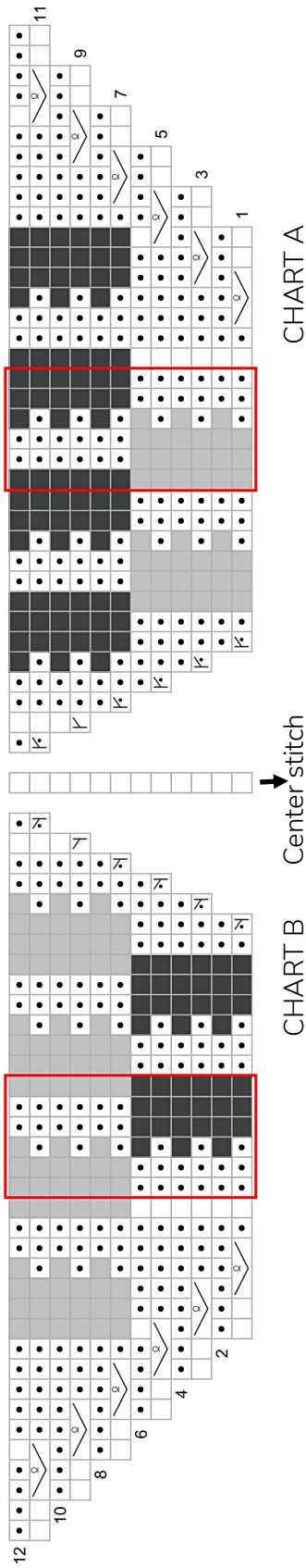
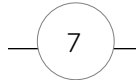


CHART A

CHART B

Center stitch





## Working Flower Charts 1 & 2

For Flower Chart 1, work Row 1-10 (or 13-20) of the Charts on page 9. For Flower Chart 2 work Row 1-8 of the Charts on page 9.

Work Row 11 or 21 (Flower Chart 1) or 9 (Flower Chart 2) of the Chart to the orange dot. Now, you are going to pull loops through the eyelets of the previous rows.

Work Step 1-8 of the Loopy Flower instructions on page 3.

## Working Flower Chart 3

Work Row 1-10 of the Chart on page 10.

Work Row 11 of the Chart to the orange dot. Now, you are going to pull loops through the eyelets of the previous rows. Note that for this last tier of flowers there are 5 eyelets, instead of 4. For each flower, pull 10 loops, in the same manner as you did before.

When working Row 12 of the Chart, at the green square, purl 11 sts together.

## FLOWER BORDER

### Flower Charts, Tier 1

Next, you are going to work Flower Chart 1. Please note that Row 3 has kfb's instead of kfbf's.

Work the Chart as follows.

**RS rows:** work Chart A to m, slm, work center st, slm, work Chart B to end.

**WS rows:** work Chart B to m, slm, work center st, slm, work Chart A to end.

After working the Chart you have 437 sts on your needle.

### Flower Charts, Tier 2

Work the Flower Chart 2 as follows.

**RS rows:** work Chart A to m, slm, work center st, slm, work Chart B to end.

**WS rows:** work Chart B to m, slm, work center st, slm, work Chart A to end.

After working the Chart you have 469 sts on your needle.

Next, work Row 3-12 of **Flower Chart 1**; 501 sts.

## Flower Charts, Tier 3

Work the Flower Chart 3 as follows.

**RS rows:** work Chart A to m, slm, work center st, slm, work Chart B to end.

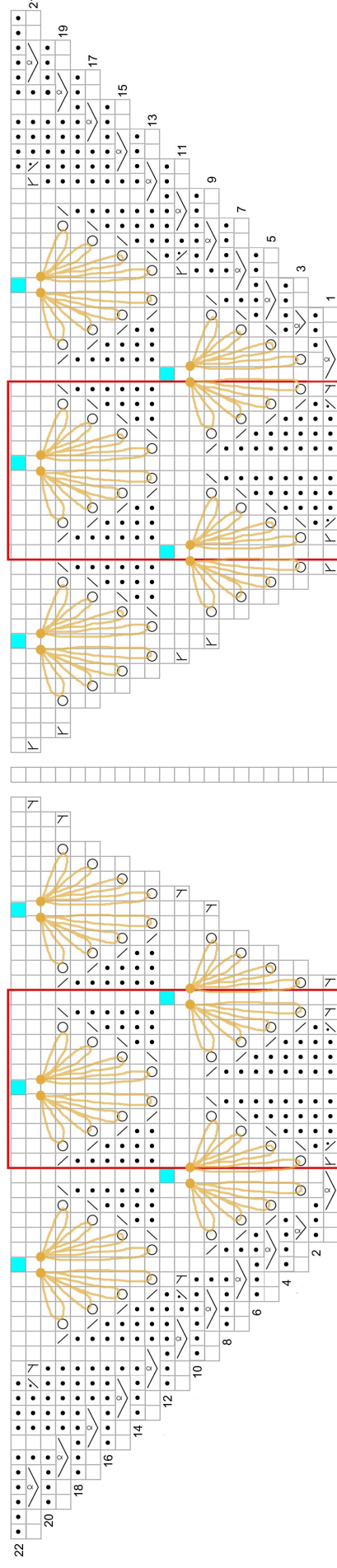
**WS rows:** work Chart B to m, slm, work center st, slm, work Chart A to end.

After working the Chart you have 535 sts on your needle.





## FLOWER CHART 1



- ☐ RS: knit
- ☐ WS: purl
- ☐ RS: purl
- ☐ WS: knit
- ☐ yo
- ☐ ssk
- ☐ k2tog
- ☐ p2tog
- ☐ ssp
- ☐ M1R
- ☐ M1L
- ☐ kfbf
- ☐ kfb
- ☐ pull a loop
- ☐ see instructions
- ☐ Repeat

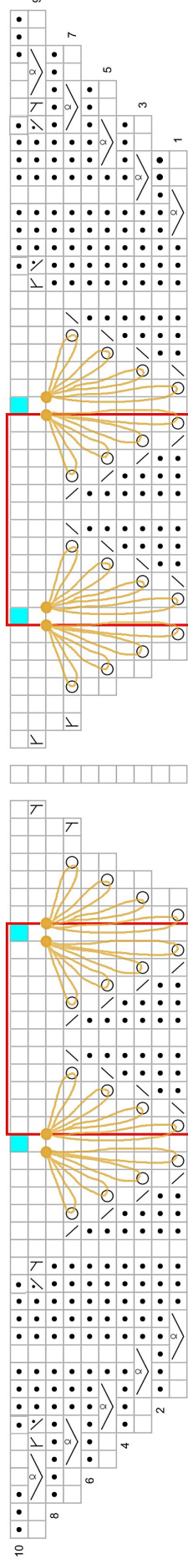
Center stitch

CHART A

CHART B

9

## FLOWER CHART 2



Center stitch

CHART A

CHART B

9



**FLOWER CHART 3**

RS: knit WS: purl yo M1R M1L ssk k2tog kfbf

CDD Repeat pull a loop see instructions

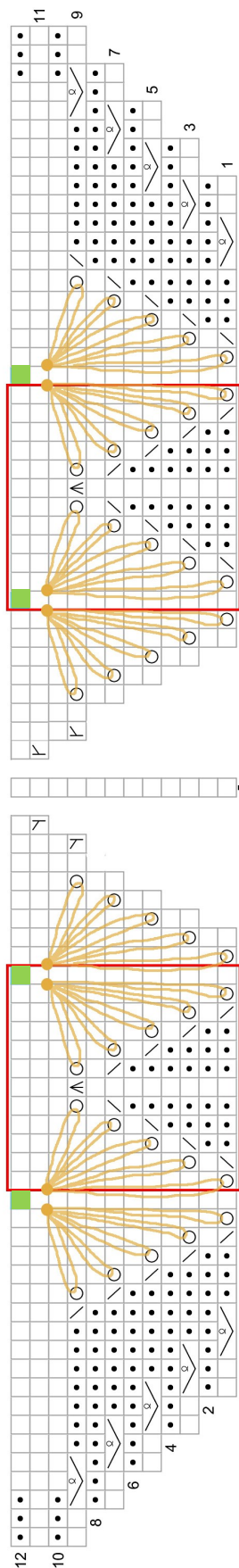


CHART A

Center stitch

CHART B

## EDGE

Work the edge of your shawl as follows.

**Row 1 (RS):** k to m, M1R, slm, k1, slm, M1L, k to end; 537 sts.

**Row 2 (WS):** k12, p1, (k11, p1) to 15 sts bef m, k to m, slm, p1, slm, k15, p1, (k11, p1) to last 12 sts, k to end.

**Row 3:** work as Row 1; 539 sts.

**Row 4:** k12, p1, (k11, p1) to 16 sts bef m, k to m, slm, p1, slm, k16, p1, (k11, p1) to last 12 sts, k to end.

**Row 5:** work as Row 1; 541 sts.

**Row 6:** k12, p1, (k11, p1) to 17 sts bef m, k to m, slm, p1, slm, k17, p1, (k11, p1) to last 12 sts, k to end.

**Row 7:** work as Row 1; 543 sts.

**Row 8:** k12, p1, (k11, p1) to 18 sts bef m, k to m, rem m, p1, rem m, k18, p1, (k11, p1) to last 12 sts, k to end.



## Bind Off

Next, you are going to BO your shawl using an Icelandic Bind Off. Nupps will be worked on top of the columns of knit stitches while binding off. This Moonstruck Knits video shows the Icelandic Bind Off starting at the 9:50 minute mark. [Moonstruck Knits | Malin cardigan | Tutorial bumpless kfb, working in pattern & Icelandic bind off \(youtube.com\)](https://www.youtube.com/watch?v=...)





## Nupp

When you are instructed to make a nupp work as follows.

**Step 1:** make 5 sts out of 1 st by knitting the st in the front, back, front, back and the front.

**Step 2:** with your LH needle, pass the second st on your RH needle over the first st 4 times, reducing the 5 sts to 1 st.

**Step 3:** sl the first st on your RH needle to your LH needle and knit it.

**Step 4:** sl the st you've just knitted back to your LH needle.

## Icelandic Bind Off with Nupps

For the Icelandic Bind Off with Nupps work as follows.

Knit 2 sts, pass the second st on your RH needle over the first st.

Make a nupp by working Step 1-4 above.

Slip both the sts on your RH needle to your LH needle.

Continue with the Repeat below.

## Repeat

**Step 1:** insert the RH needle pwise into the front loop of the first st on your LH needle.

**Step 2:** insert your RH needle kwise into the front loop of the second st on your LH needle. Pull that st through the first st, and knit it.

**Step 3:** slip both sts off the needle.

**Step 4:** slip the st on your RH needle to your LH needle.

Repeat Step 1-4 of the Repeat until the first st on your LH needle is a st that is on top of a column of knit stitches. **Do not work Step 4, the last st of the bind off stays on your RH needle.**

**Step 6:** make a nupp.

**Step 7:** slip both the sts on your RH needle to your LH needle.

Repeat Step 1-7 until you have worked the nupp on top of the last column of knit stitches. Bind off the remainder of the sts with the Icelandic Bind Off technique until there are 2 sts on your LH needle. **Do not work Step 4, the last st of the bind off stays on your RH needle.**

Make a nupp.

Knit 1 st, and pass the second st on your LH needle over the first st.

Knit the last st and pass the second st on your LH needle over the first st. Pull a loop with the last st and break yarn.

## FINISHING

Weave in all ends. Wet block your shawl, preferably using blocking wires, while stretching the shawl measurements given in SCHEMATIC.

---

**Photography** Daan Schipper

**Final editing** Karen Fought, Irina Phillips, Kathy Spitler and Eva-Maria Treichel

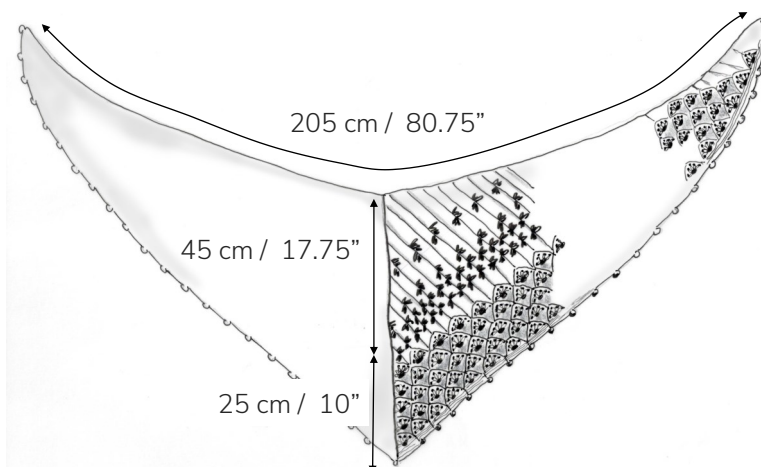
**Title quote** Marc Jacobs

---





## SCHEMATIC



## ABBREVIATIONS

(**x, y**) = the brackets represent a repeat. Directions within the bracket should be repeated as instructed.

**approx** = approximately

**bef** = before

**BO** = bind off

**CO** = cast on

**CDD** = central double decrease; slip 2 stitches together as if to knit to your RH needle. Knit the next st. Pass the slipped stitches over the knitted stitch.

**inc('d)** = increase(d)

**k** = knit

**k2tog / p2tog** = knit / purl 2 sts together (right leaning decrease).

**kfb / pfb** = knit / purl into the front and the back of the stitch (1 st increased).

**kfbf / pfbf** = knit / purl into the front, the back and the front of the stitch (2 sts increased).

**kwise** = knitwise

**LH** = left hand

**m** = marker

**M1L / M1pL** = make 1 (purl) left (left leaning increase); insert left needle, from front to back, under the strand of yarn which runs between the next stitch on the left needle and last stitch on the right needle; knit (purl) this stitch through the back loop.

**M1R / M1pR** = make 1 (purl) right (right leaning increase); insert left needle, from back to front, under the strand of yarn which runs between the next stitch on the left needle and the last stitch on the right needle; knit (purl) this stitch through the front loop.

**p** = purl

**patt** = pattern

**pm** = place marker

**pwise** = purlwise

**PU** = pick up

**rem** = remove

**RH** = right hand

**RS** = right side

**sl** = slip (purlwise with yarn in back on RS and yarn in front on WS, unless otherwise stated).

**slm** = slip marker

**ssk / ssp** = slip, slip, knit / purl (left leaning decrease); slip 2 sts as if to k, one at a time, slip the sts back to the LH needle, knit / purl through back loop.

**st(s)** = stitch(es)

**WS** = wrong side

**yo** = yarn over