

Knitting for Olive



Snow Sweater

Sizes: 1 (2, 4, 6, 8, 10) years

Finished measurements: Chest circumference: approx. 57 (67, 73, 80, 87, 91) cm [22½ (26½, 28¾, 31½, 33¾, 35¾)]"; Full length measured mid front: approx. 25 (28, 32, 37, 41, 46) cm [10 (11, 12½, 14½, 16½, 18)]" Sleeve length from underarm to cuff: approx. 20 (22, 24, 27, 30, 33) cm [7¾ (8¾, 9½, 10¾, 11¾, 13)]"

Yarn: MC: 1 strand of Knitting for Olive Merino (250 m [273 yd] / 50 g [1.8 oz]), 2 (2, 2, 3, 3, 3) balls + 1 strand of Knitting for Olive Soft Silk Mohair (225 m [246 yd] / 25 g [0.9 oz]), lace-weight yarn, 2 (2, 3, 3, 3, 4) balls; CC 1 (snow): 1 strand of Knitting for Olive Merino, 1 ball + 1 strand of Knitting for Olive Soft Silk Mohair, 1 ball; CC 2 (trees): 1 strand of Knitting for Olive Merino, 1 ball + 1 strand of Knitting for Olive Soft Silk Mohair, 1 ball. Sample is knit in Merino + Soft Silk Mohair in Deep Petroleum Blue (MC), Snowflake (CC 1) and Clover Green (CC 2) colorways

Needles: 3.5 mm / US4 and 4 mm / US6 in 40 and 60 cm [16 and 24]" cable lengths and 3.5 mm / US4 and 4 mm / US6 double-pointed needles, or in size to obtain gauge

Gauge (after blocking): 21 sts and 33 rows = 10 cm [4"] in st st with 4 mm / US6 needles

Notions: Stitch markers, waste yarn or stitch holders, tapestry needle

Special Techniques

Our Knitting for Olive video tutorials clearly demonstrate the special techniques used in Snow Sweater (in Danish):

- M1R and M1L increases on RS:
<https://www.youtube.com/watch?v=n4bAF8eMcvM&t=7s>
- German short rows:
<https://www.youtube.com/watch?v=9encEthft8E&t=135s>
- Italian bind-off:
<https://www.youtube.com/watch?v=OzHgm6Gmhyc>

Construction Notes

Snow Sweater is our Christmas sweater 2024. It is worked in the round from the top down, has a circular yoke construction and features a Fair Isle pattern of snow and fir trees all around the body. The sweater is worked using 1 strand of Merino + 1 strand of Soft Silk Mohair held together throughout.

You begin with the folded ribbed neckband and continue with neckline shaping using German short rows. Afterwards, increases are worked around the yoke down to the underarms. After the yoke is finished, sleeve stitches are placed on hold to be worked after the body has been completed. The body is then further shaped by working additional German short rows at each underarm before you start working the charted Fair Isle pattern. Ribbed edges finish the body and sleeves.

The Fair Isle pattern is charted only.

If you wish to use leftover yarn for contrast colors 1 and 2, you will need less than 20 g Merino and less than 11 g Soft Silk Mohair for the snow and less than 10 g Merino and 7 g Soft Silk Mohair for the trees.

Notes on the Fair Isle Technique

We recommend using the Fair Isle technique when working in the round with multiple colors at the same time. On those rounds of the chart where you alternate between colors, both the strand with the main color and the strand with the contrast color are carried at the back of the work, creating horizontal strands, or floats, on the wrong side of your work. When you knit using the main color, the strand of contrast color travels behind the stitches until it is ready to be used again, and vice versa.

With this particular design, you will get long floats in some places. To avoid this causing trouble, we recommend that you trap, or catch, these floats by twisting your strands at regular intervals. You do this by alternately going over or underneath the non-active color, or “floating” color, when you pick your active, or working color. This will twist your strands and trap your floats.

Chart Notes

When you work from charts, always start from the bottom right corner with the first stitch of Row 1 and work the chart from the bottom up. When you are working in the round, work the chart from right to left on all rounds.

You will find a detailed guide on how to read charts that features examples from our patterns if you go to www.knittingforolive.com

Folded Ribbed Neckband

With 3.5 mm / US4 circular needle and 1 strand of Merino + 1 strand of Soft Silk Mohair in MC held together, cast on 60 (66, 72, 78, 84, 90) sts using long-tail cast-on method, join for working in the round, being careful not to twist sts, pm (= BOR/mid-back m)

Set-up Round: (K1, p1) to end of round

Work in 1x1 rib pattern as established until work measures 7 (7, 8, 8, 9, 9) cm [$2\frac{3}{4}$ ($2\frac{3}{4}$, $3\frac{1}{4}$, $3\frac{1}{4}$, $3\frac{1}{2}$, $3\frac{1}{2}$)]"

Note: You will now fold the neckband and attach it to the cast-on edge by knitting the live stitches on the needle together with cast-on stitches, either knitwise or purlwise, in order to maintain the established rib pattern. Pick up the stitch from the cast-on edge that is directly below the live stitch on your left needle.

With RS of work facing, fold neckband in half so that the live sts on needle are parallel to cast-on edge, *pick up first st from cast-on edge and place on left needle, k2tog, pick up next st from cast-on edge and place on left needle, p2tog; repeat from * to end of round

Yoke

Change to 4 mm / US6 circular needle

K 1 round

Inc Round 1: (M1L, k3) to end of round [20 (22, 24, 26, 28, 30) sts increased] = 80 (88, 96, 104, 112, 120) sts

Note: You will now shape the neck opening with German short rows, working back and forth. Work the double stitches as 1 stitch throughout (see Special Techniques).

Short Row 1 (RS): K20 (22, 24, 26, 28, 30), tw

Short Row 2 (WS): Ds, p to BOR, sm, p20 (22, 24, 26, 28, 30), tw

Short Row 3 (RS): Ds, k to BOR, sm, k25 (29, 32, 34, 37, 40), tw

Short Row 4 (WS): Ds, p to BOR, sm, p25 (29, 32, 34, 37, 40), tw

Short Row 5 (RS): Ds, k to BOR, sm, k30 (36, 40, 42, 46, 50), tw

Short Row 6 (WS): Ds, p to BOR, sm, p30 (36, 40, 42, 46, 50), tw

Next row (RS): Ds, k to BOR

Note: You will now resume working in the round.

K 2 (2, 3, 3, 3, 4) rounds

Note: You will now shape the yoke further with increases.

Inc Round 2: (M1L, k4) to end of round [20 (22, 24, 26, 28, 30) sts increased]
= 100 (110, 120, 130, 140, 150) sts

K 4 (5, 6, 6, 7, 7) rounds even

Inc Round 3: (M1L, k5) to end of round [20 (22, 24, 26, 28, 30) sts increased]
= 120 (132, 144, 156, 168, 180) sts

K 5 (5, 6, 7, 7, 8) rounds even

Inc Round 4: (M1L, k6) to end of round [20 (22, 24, 26, 28, 30) sts increased]
= 140 (154, 168, 182, 196, 210) sts

K 5 (6, 6, 8, 8, 8) rounds even

Inc Round 5: (M1L, k7) to end of round [20 (22, 24, 26, 28, 30) sts increased]
= 160 (176, 192, 208, 224, 240) sts

K 5 (6, 7, 8, 9, 10) rounds even

Inc Round 6: (M1L, k8) to end of round [20 (22, 24, 26, 28, 30) sts increased]
= 180 (198, 216, 234, 252, 270) sts

K 6 (6, 7, 8, 10, 11) rounds even

Inc Round 7: (M1L, k9) to end of round [20 (22, 24, 26, 28, 30) sts increased]
= 200 (220, 240, 260, 280, 300) sts

K 2 (3, 4, 7, 9, 11) rounds even

Divide body and sleeves

Dividing Round: K27 (30, 33, 37, 40, 43), place next 46 (50, 54, 56, 60, 64) sleeve sts on holder, cast on 3 (5, 6, 5, 6, 5) new sts, pm (= side m), cast on another 3 (5, 5, 5, 5, 5) new sts, k54 (60, 66, 74, 80, 86), place next 46 (50, 54, 56, 60, 64) sleeve sts on holder, cast on 3 (5, 6, 5, 6, 5) new sts, pm (= side m), cast on another 3 (5, 5, 5, 5, 5) new sts, k27 (30, 33, 37, 40, 43) = 120 (140, 154, 168, 182, 192) sts

Body

K 1 round

Note: You will now shape the body by working two sets of short rows, one set on each side of the sweater. Work double stitches as 1 stitch throughout (see Special Techniques). BOR is at mid back. Slip markers as you come to them unless otherwise noted.

Short Row 1 (RS): K to 10 (11, 12, 12, 14, 14) sts after first side m, tw

Short Row 2 (WS): Ds, p19 (21, 22, 23, 26, 27), tw

Short Row 3 (RS): Ds, k to 6 (8, 9, 10, 11, 11) sts after last ds, tw

Short Row 4 (WS): Ds, p to 6 (8, 9, 10, 11, 11) sts after last ds, tw

Short Row 5 (RS): Repeat Short Row 3

Short Row 6 (WS): Repeat Short Row 4

Short Row 7 (RS): Ds, k to 10 (11, 12, 12, 14, 14) sts after second side m, tw

Short Row 8 (WS): Ds, p19 (21, 22, 23, 26, 27), tw

Short Row 9 (RS): Ds, k to 6 (8, 9, 10, 11, 11) sts after last ds, tw

Short Row 10 (WS): Ds, p to 6 (8, 9, 10, 11, 11) sts after last ds, tw

Short Row 11 (RS): Repeat Short Row 9

Short Row 12 (WS): Repeat Short Row 10

Next Row (RS): Ds, k to BOR

Note: You will now resume working in the round. Both side markers can be removed.

Sizes 1 and 10 years only:

Next round (inc round): *K20 (-, -, -, -, 48), M1L; repeat from * to end of round [6 (-, -, -, -, 4) sts increased]
= 126 (-, -, -, -, 196) sts

Sizes 2, 4, 6 and 8 years only:

K 1 round

All sizes:

Note: You will now start working from Chart A (B, C, D, E, F). Be sure to read the notes on page 2 carefully before proceeding.

Beginning with Round 1 and ending with Round 34 (40, 46, 52, 58, 64), work *Chart A (B, C, D, E, F)* across all sts, 1 time

Ribbed edge

Change to 3.5 mm / US4 circular needle and continue with CC 1 (= snow) only

K 1 round

Set-up Round: (K1, p1) to end of round

Work in 1x1 rib pattern as established until the ribbed edge measures approx. 3 (3, 3, 4, 4, 5) cm [1¼ (1¼, 1¼, 1½, 1½, 2)]"

Bind off using Italian bind-off method (see Special Techniques)

Sleeves

Transfer 46 (50, 54, 56, 60, 64) sleeve sts from holder onto 4 mm / US6 double-pointed needles (or circular needle if using Magic Loop) and distribute sts evenly across needles

Note: You will now pick up stitches for the underarm. Please note that for some of the sizes, the number of stitches picked up here is slightly different than the number of stitches cast on for the underarms on the body.

With RS of work facing, using MC and *beginning at center of underarm cast-on edge*, pick up and knit 4 (5, 6, 6, 6, 5) sts along underarm, k across sleeve sts, pick up and knit another 4 (5, 6, 6, 6, 5) sts along remaining part of underarm, join for working in the round, place BOR m = 54 (60, 66, 68, 72, 74) sts

Note: You will now shape the sleeve with decreases

Rounds 1-5: K to end of round

Round 6 (dec round): K1, k2tog, k to last 3 sts, sl1k, k1tbl, pssso, k1 [2 sts decreased]

Repeat Rounds 1-6, 6 (7, 8, 9, 9, 10) times more [12 (14, 16, 18, 18, 20) more sts decreased] = 40 (44, 48, 48, 52, 52) sts

Continue even in st st until sleeve measures approx. 17 (19, 21, 23, 26, 28) cm [6¾ (7½, 8¼, 9, 10¼, 11)]"

Ribbed Cuffs

Change to 3.5 mm / US4 circular or double-pointed needles

Size 1 year only:

Dec Round: (K2tog, k3) to end of round [8 sts decreased]

Sizes 2, 4, 6 and 8 years only:

Dec Round: K- (4, 0, 0, 4, -), (k2tog, k2) to end of round [- (10, 12, 12, 12, -) sts decreased]

Size 10 years only:

Dec Round: K4, (k2tog, k4) to end of round [10 sts decreased]

All sizes

Upon completion of this section, you will have 32 (34, 36, 36, 40, 44) sts

Set-up Round: (K1, p1) to end of round

Work in 1x1 rib pattern as established until cuff measures 3 (3, 3, 4, 4, 5) cm [1¼ (1¼, 1¼, 1½, 1½, 2)]"

Bind off using Italian bind-off method (see Special Techniques)

Make second sleeve the same

Finishing

Weave in all loose ends

Block

We hope you enjoy knitting Snow Sweater!

We would love to see your finished projects! If you would like to share your work with us on Instagram, please use the hashtags #knittingforolive, #snesweater and #snowsweater or tag us @knittingforolive

Abbreviations

Approx. – approximately

BOR – beginning of round

K – knit

P – purl

Dec – decrease

Inc – increase

Ds – double stitch (for German short-row technique)

Tw – turn work (for German short-row technique)

K1tbl – knit 1 stitch through back loop

K2tog – knit 2 stitches together [1 stitch decreased]

P2tog – purl 2 stitches together [1 stitch decreased]

MC – main color

CC – contrast color

M – marker

Pm – place marker

Sm – slip marker

Pssso – pass slipped stitch(es) over

RS – right side

WS – wrong side

Sl1k – slip 1 stitch knitwise

St/sts – stitch/stitches

St st – stockinette stitch

M1L – make 1 new left leaning knit stitch (RS): insert right needle, from back to front, under the bar running between first stitch on left needle and last stitch on right needle, pick up bar and knit this stitch into the back loop [1 stitch increased]

Charts

Chart A - Size 1 year only

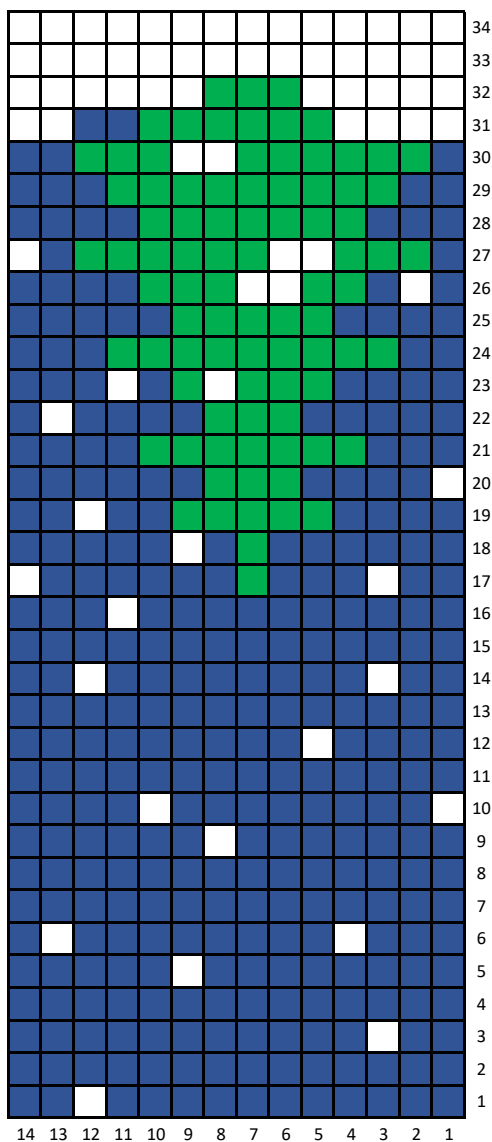
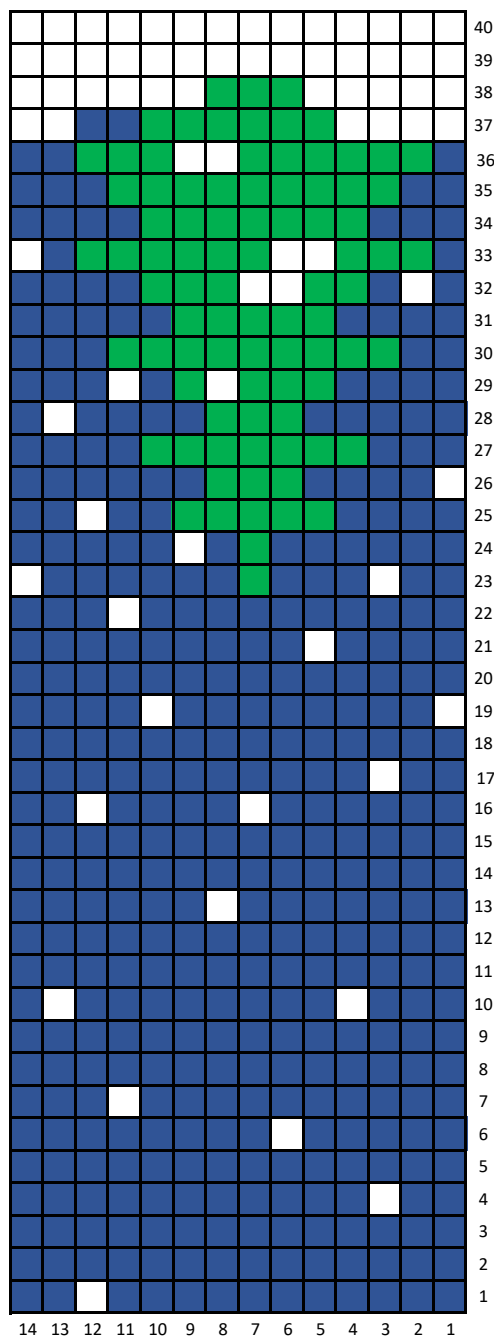


Chart B - Size 2 years only



Key

- Using MC, k1
- Using CC 1 (snow), k1
- Using CC 2 (trees), k1

Chart C - Size 4 years only

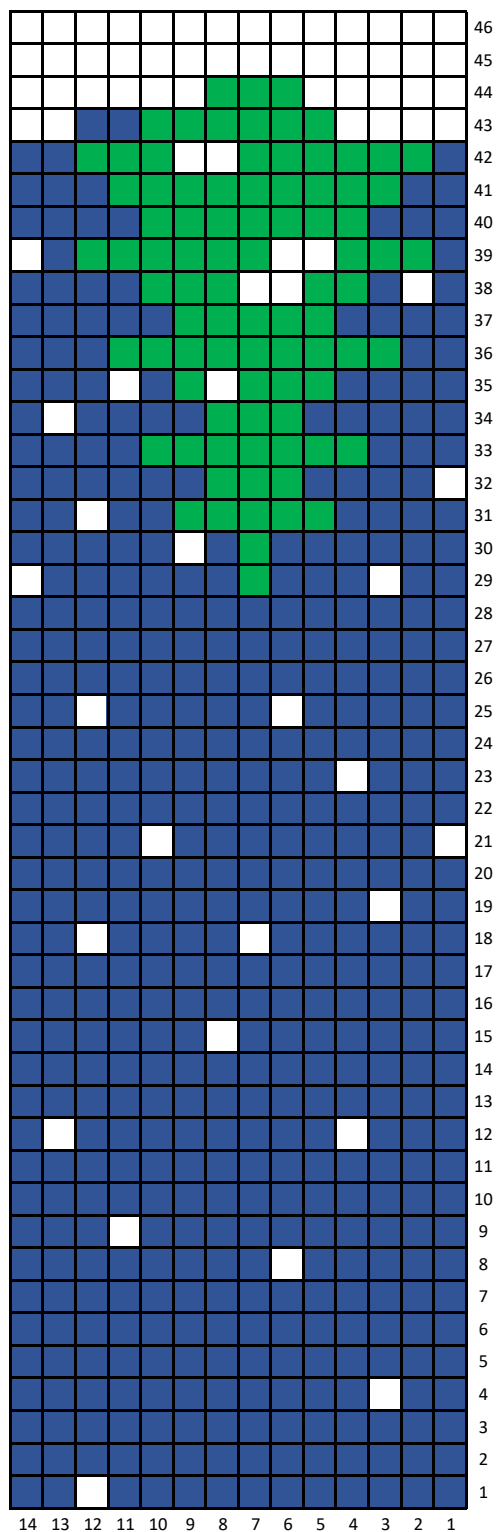


Chart D - Size 6 years only

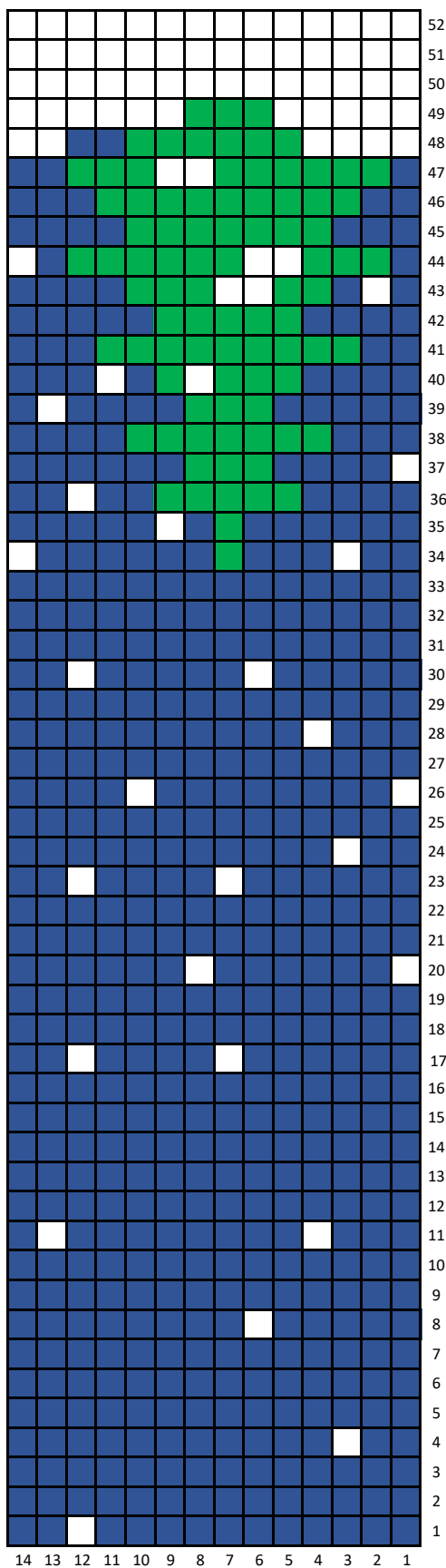


Chart E - Size 8 years only

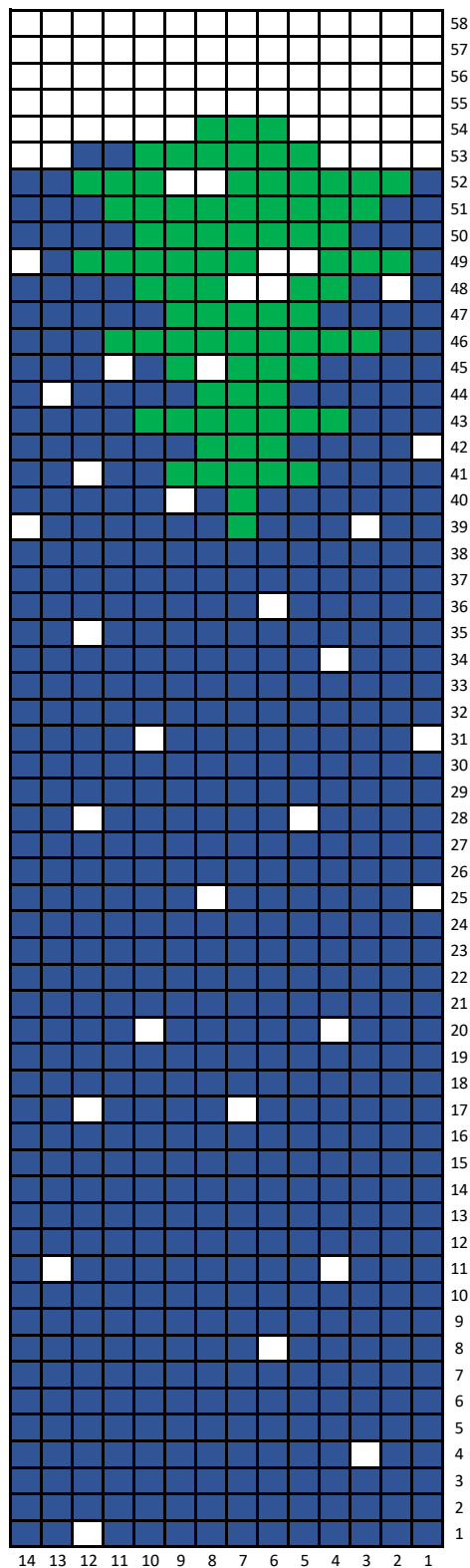


Chart F - Size 10 years only

