

s a s k i e

the petite knitter





NOTES

This jumper pattern is unisex, has a boxy fit, and comes in ten different adult sizes. There are two options for body length options - cropped and regular. Because the jumper is knitted top-down, you can easily customize the length by stopping before or continuing after the recommended body length measurements. Remember to swatch, check gauge, and size up or down needles as needed.

There are also two sleeve length options, bracelet and full length, so you can customize the jumper to fit you best. The colourwork yoke has long floats, so remember to catch your floats! The colourwork chart is read from right to left, bottom to top. The intended ease is about 11.5cm/4½ to 24cm /9½". As each body is unique, please remember the pattern serves as a guide. Feel free to modify to fit your own body and arms.

CONSTRUCTION

This jumper is knitted top-down and in the round. A seamless colourwork round yoke follows with increase intervals throughout. Sleeve separation creates the distinction between armholes and body. The tapered sleeves are knitted top-down and in the round as well.

SIZES

1 (2, 3, 4) 5, 6 [7, 8, 9] 10

YARN

tukuwool fingering

mc – mantu

cc – sake

NEEDLES

Size 3.5 mm / US4 or size
necessary to obtain gauge

GAUGE

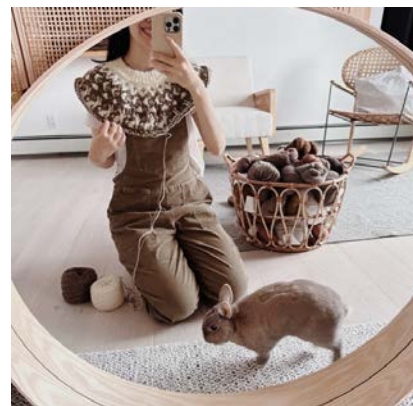
24 sts x 26 rnds = 4"/10 cm in colourwork sts
25 sts x 27 rows = 4"/10 cm in stockinette sts

WIRE LENGTHS

40cm/16"
60cm/24"
80cm/32"

NOTIONS

Stitch markers
Tapestry needle
Stitch holders / Waste yarn



YARDAGE - FINGERING

METRES - CROPPED

mc - 569 (625, 719, 864) 926, 1078 [1185, 1284, 1362] 1437
cc - 126 (138, 151, 165) 181, 192 [208, 224, 236] 245

YARDS - CROPPED

mc - 622 (684, 786, 945) 1013, 1179 [1296, 1404, 1490] 1572
cc - 138 (151, 165, 180) 198, 210 [227, 245, 258] 268

METRES - REGULAR

mc - 866 (1014, 1139, 1316) 1520, 1674 [1843, 2013, 2220] 2350
cc - 126 (138, 151, 165) 181, 192 [208, 224, 236] 245

YARDS - REGULAR

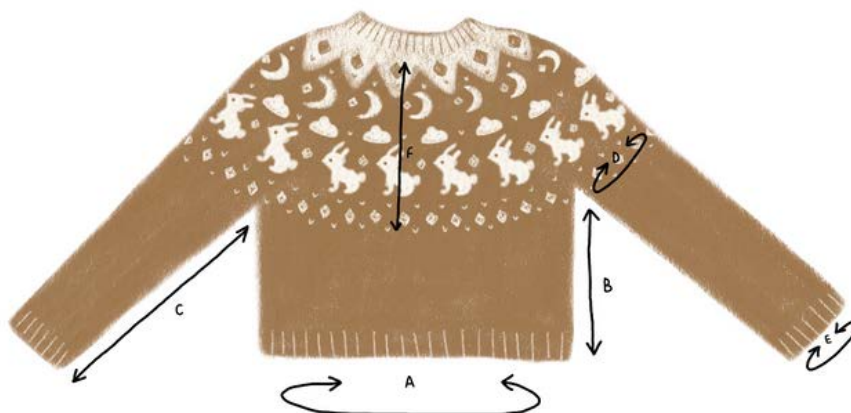
mc - 947 (1109, 1246, 1439) 1662, 1831 [2016, 2201, 2428] 2570
cc - 138 (151, 165, 180) 198, 210 [227, 245, 258] 268

ABBREVIATIONS

bor - beginning of rnd
co - cast on
cc - contrasting colour
inc - increase(s)
k - knit
p - purl

k2tog - knit two
stitches together
m1 - make one stitch
mc - main colour
pm - place marker
ssk - slip slip knit

st(s) - stitch(es)
sr - short row
rs - right side
rnd(s) - round(s)
ws - wrong side
w&t - wrap and turn
* - repeat between



A CHEST CIRCUMFERENCE

cm: 82 (92.5, 102, 113) 122.5, 132.5 [145, 153, 162] 173.5
in: 32½ (36½, 40½, 44½) 48¾, 52¼ [57, 60¼, 63¾] 68¼

B1 SIDE LENGTH - CROPPED

cm: 21.5 (22, 22, 22) 22, 22 [22, 22, 22] 22
in: 8½ (8¾, 8¾, 8¾) 8¾, 8¾ [8¾, 8¾, 8¾] 8¾

B2 SIDE LENGTH - REGULAR

cm: 34.5 (37, 39.5, 42) 45, 47.5 [48.5, 50.5, 50.5] 52.5
in: 13½ (14½, 15½, 16½) 17¾, 18¾ [19, 20, 20] 20¾

C1 SLEEVE LENGTH - BRACELET

cm - 44.5 (45.5, 45.5, 47) 47, 48 [48, 49.5, 49.5] 49.5
inches - 17½ (18, 18, 18½) 18½, 19 [19, 19½, 19½] 19½

C2 SLEEVE LENGTH - FULL

cm - 46.5 (47.5, 48, 50.5) 52.5, 53 [54.5, 54.5, 55.5] 56
inches - 18¾ (18¾, 19, 20) 20½, 20¾ [21½, 21½, 21¾] 22

D UPPER ARM

cm: 28.5 (31, 34.5, 37.5) 40, 40.5 [44, 46.5, 49] 52.5
in: 11¼ (12¼, 13½, 14¾) 15¾, 16 [17¼, 18¼, 19¼] 20¾

E WRIST CIRCUMFERENCE

cm: 19.5 (21, 22, 23) 24, 26 [26.5, 26.5, 29] 29
in: 7¾ (8¾, 8¾, 9) 9½, 10¼ [10½, 10½, 11½] 11½

F YOKE DEPTH

cm: 20.5 (21, 21.5, 23) 23, 23.5 [25, 25.5, 26] 26.5
in: 8 (8¼, 8½, 9) 9, 9¼ [9¾, 10, 10¼] 10½

BEGIN PATTERN

neck

Using 3.5mm / US4 needles and with mc, co 88 (92, 98, 110) 116, 120 [122, 128, 132] 134 sts. Join in the rnd and pm to mark bor. Attach cc, K1rnd. Work *k1, p1* to end of rnd. Repeat until ribbed neckline measures 5cm/2".

Note: If you prefer a wider neck, you can skip to the 'set-up inc rounds' section of your size. Co your preferred number of sts that you think is comfortable as a neckline.

Work the subsequent increases as listed.

SET-UP INC ROUNDS

Before starting chart a, knit the following increases. Refer to your size section for increase rounds in the yoke. Switch to longer cables as yoke size increases.

SIZE 1

Rnd 1-3: K to end of rnd. [88 sts]

SIZE 2

Rnd 1: K to end of rnd.

Rnd 2: *K23, m1* to end of rnd.

(4 sts inc)

[96 sts]

Rnd 3: K to end of rnd.

SIZE 3

Rnd 1: K to end of rnd.

Rnd 2: *K16, m1* to last 2 sts, k2.

(6 sts inc) [104 sts]

Rnd 3: K to end of rnd.

SIZE 4

Rnd 1: K to end of rnd.

Rnd 2: *K18, m1* to last 2 sts, k2.

(6 sts inc) [116 sts]

Rnd 3: K to end of rnd.

SIZE 5

Rnd 1: K to end of rnd.

Rnd 2: *K14, m1* to last 4 sts, k4.

(8 sts inc) [124 sts]

Rnd 3: K to end of rnd.

SIZE 6

Rnd 1: K to end of rnd.

Rnd 2: *K10, m1* to end. (12 sts inc) [132 sts].

Rnd 3: K to end of rnd.

SIZE 7

Rnd 1: K to end of rnd.

Rnd 2: *K5, m1, k6, m1* to last st, k1.

(22 sts inc) [144 sts]

Rnd 3: K to end of rnd.

SIZE 8

Rnd 1: K to end of rnd.

Rnd 2: *K9, m1* to last 2 sts, k2.

(14 sts inc) [142 sts]

Rnd 3: K to end of rnd.

Rnd 4: *K14, m1* to last 2 sts, k2.

(10 sts inc) [152 sts]

SIZE 9

Rnd 1: K to end of rnd.

Rnd 2: *k8, m1* to last 4 sts, k4.

(16 sts inc) [148 sts]

Rnd 3: K to end of rnd.

Rnd 4: *K12, m1* to last 4 sts, k4.

(12 sts inc) [160 sts]

SIZE 10

Rnd 1: K to end of rnd.

Rnd 2: *K6, m1* to last 8 sts, k8.

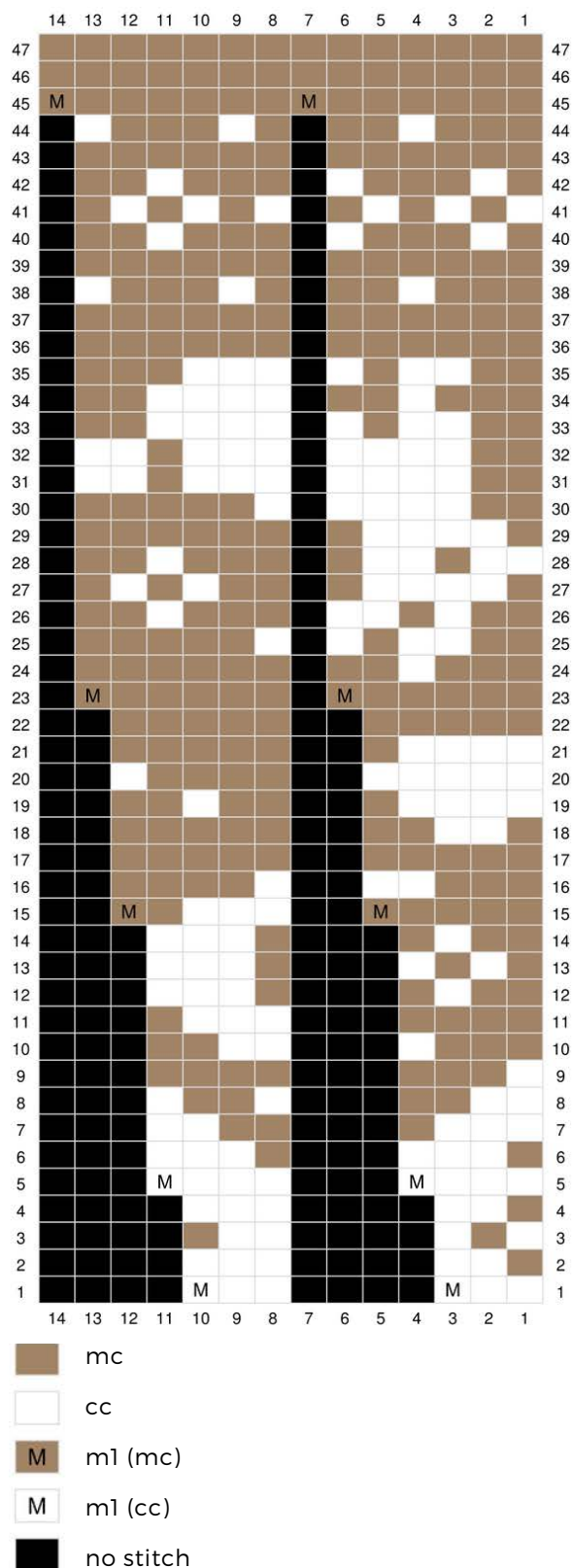
(21 sts inc) [155 sts]

Rnd 3: K to end of rnd.

Rnd 4: *K9, m1* to last 2 sts, k2.

(17 sts inc) [172 sts]

All sizes: Knit chart a.



STITCH COUNT AFTER INCREASES

After rnd 1, you have 132 (144, 156, 174) 186, 198
[216, 228, 240] 258 sts.

After rnd 5, you have 176 (192, 208, 232) 248, 264
[288, 304, 320] 344 sts.

After rnd 15, you have 220 (240, 260, 290) 310, 330
[360, 380, 400] 430 sts.

After rnd 19, you have 264 (288, 312, 348) 372, 396
[432, 456, 480] 516 sts.

After rnd 44, you have 308 (336, 364, 406) 434, 462
[504, 532, 560] 602 sts.

Continue in stockinette stitch (k all stitches) until
work measures: 20.5 (21, 21.5, 23) 23, 23.5 [25, 25.5, 26]
26.5 / 8 (8¼, 8½, 9) 9, 9¼ [9¾, 10, 10¼] 10½.

SEPARATION OF SLEEVES

K the first 92 (103, 112, 125) 135, 147 [161, 170, 179]
192 sts for back of body.

Place the next 62 (65, 70, 78) 82, 84 [91, 96, 101]
109 sts on stitch holder or scrap yarn for sleeve
a.

Backwards loop cast-on 8 (11, 14, 14) 16, 16 [17, 18,
20] 21 sts for underarm.

Repeat for front, sleeve b and second underarm
over remaining sts. Pm to mark bor. The bor
should be on the back of your left shoulder.

You should have 202 (228, 252, 278) 302, 326
[356, 376, 398] 426 sts on needles.

CHEST SHAPING - OPTIONAL

K 1 round.

SR1 (rs): K 193 (217, 238, 264) 286, 310 [339, 358, 378] 405, w&t.

SR2 (ws): p 91 (102, 111, 124) 134, 146 [160, 169, 178] 191, w&t.

SR3 (rs): k 86 (97, 106, 119) 129, 141 [155, 164, 173] 186 , w&t.

SR4 (ws): p 81 (92, 101, 114) 124, 136 [150, 159, 168] 181, w&t.

SR5 (rs): k 76 (87, 96, 109) 119, 131 [145, 154, 163] 176, w&t.

SR6 (ws): p 71 (82, 91, 104) 114, 126 [140, 149, 158] 171, w&t.

SR7 (rs): k 66 (77, 86, 99) 109, 121 [135, 144, 153] 166, w&t.

SR8 (ws): p 61 (72, 81, 94) 104, 116 [130, 139, 148] 161, w&t.

Work in stockinette stitch (k all sts), picking up the wraps as you go. Knit an additional round, picking up remaining wraps and knit them together with the wrapped stitches as you go.

BODY

There are two options for body length - cropped or regular. If you are shorter or prefer a slightly cropped jumper, knit the section below labelled "cropped body". If you are taller or prefer a longer jumper, knit the section below labelled "regular body". Continue in stockinette stitch (k all stitches) until work measures:

CROPPED BODY

16.5 (17, 17, 17) 17, 17 [17, 17, 17] 17cm/6½ (6¾, 6¾, 6¾) 6¾, 6¾ [6¾, 6¾, 6¾] 6¾ from underarm.

REGULAR BODY

29.5 (32, 34.5, 37) 40, 42.5 [43.5, 45.5, 45.5]
47.5cm/11½ (12½, 13½, 14½) 15¾, 16¾, [17, 18, 18] 18"
from underarm.

HEM

Work *k1, p1* to end of rnd. Repeat until ribbed hem measures 5cm /2". K1rnd. Attach cc. Bind off loosely.



SLEEVE

Transfer 62 (65, 70, 78) 82, 84, [91, 96, 101] 109 held sleeve sts to needle. Beginning at the center of the underarm cast-on with RS facing, pick up and k 4 (5, 7, 7) 8, 8 [8, 9, 9] 10 sts, knit to end of sleeve sts, pick up and k 4 (6, 7, 7) 8, 8 [9, 9, 10] 11 sts, pm for BOR and join for working in the rnd. You have 70 (76, 84, 92) 98, 100 [114, 120, 130] 136 sts.

SLEEVE LENGTHS

There are two sleeve length options - a shorter version (bracelet) and a longer version (full). Continue to your preferred length section.

SHORTER SLEEVE - BRACELET

Rnd 1: Using mc, k all sts to end of rnd.
Dec rnd: *k1, ssk, k to last 3 sts, k2tog, k1* (2 sts dec'd).

Work the dec rnd every
7 (7, 7, 6) 5, 4 [4, 3, 3] 3 rnds for a total of
10 (10, 12, 15) 18, 18 [22, 24, 26] 30 times.

After your final decrease, you should have
50 (56, 60, 62) 62, 64 [64, 66, 68] 70 sts.

Continue in stockinette stitch (k all sts) until
sleeve measures 40.5 (42, 42, 43) 43, 44 [44,
45.5, 45.5] 45.5 cm / 16 (16½, 16½, 17) 17, 17¼
[17¼, 18, 18] 18 " from underarm.

Continue to cuff section.

LONGER SLEEVE - FULL

Rnd 1: Using mc, k all sts to end of rnd.
Dec rnd: *k1, ssk, k to last 3 sts, k2tog, k1* (2 sts dec'd).

Work the dec rnd every
10 (10, 8, 7) 6, 5 [5, 4, 4] 4 rnds for a total of
8 (9, 11, 13) 16, 16 [20, 22, 24] 28 times.

After your final decrease, you should have
54 (58, 62, 66) 66, 68 [68, 70, 72] 74 sts.

Continue in stockinette stitch (k all sts) until
sleeve measures 42.5 (43.5, 44, 46.5) 48.5, 49
[50.5, 50.5, 51.5] 52 cm / 16¾ (17¼, 17¼, 18¼)
19, 19¼ [20, 20, 20¼] 20½ " from underarm.

Continue to cuff section.

CUFF

Work *k1, p1* to end of rnd. Repeat until ribbed cuff measures 5cm / 2". K1rnd. Attach cc.
Bind off loosely.

FINISHING

Weave in all ends. Steam block to measurements.

s a s k i e

the petite knitter



COPYRIGHT \ \ THEPETITEKNITTER
SHARE \ \ #THEPETITEKNITTER

