

• knits from Oslo •



NORTHWEST SWEATER

NORTHWEST SWEATER

Sizes: XS/S (M/L) XL/XXL

Measures:

Indicative bust measurements: 76-90 (91-106) 107-124 cm

Bust: approx. 102 (112) 126 cm

Length: 52 (56) 60 cm

Inner arm length: 52 (52) 54 cm

Suggested needles: Circular needles 7.0 mm (60 and 80-100 cm), 5.0 mm (40-60 cm).

Gauge (after wash): 18 sts x 21 rows on needles 7.0 mm in Diagram B = 10x10 cm

Suggested yarn:

Heavy Merino from Knitting for Olive (50 g = 125 m)

450 (500) 550 g

Soft silk mohair from Knitting for Olive (25 g = 225 m)

125 (150) 175 g

Knit with one strand of each quality.

NORTHWEST SWEATER

Northwest Sweater is knitted in different directions giving it a unique look. It has a cropped and slightly oversized design. The sweater is knitted as two parts that are united through bind-off. The sweater is knitted with different types of cable knitting patterns. The neckline and the end of the body and arms is knitted using twisted rib.

Before you begin:

Important to read to understand the construction of the sweater:

The sweater is knitted by starting with the left part of the sweater. It is knitted as a long piece where you knit the left front piece, form the left neck line by binding off stitches and continue until the half of the left back piece. The left part of the sweater is put aside. The right part is knitted by starting at the bottom of the right back piece. The neck opening is formed and you continue until halfway on the right front piece. The two parts should now be the same length, but are opposite. On the left back piece a square is missing and another one on the right side of the front piece. These pieces are made by picking up stitches along the lower part of the left front piece and the lower part of the right back piece. The first 3 cm of the pieces are placed under the sleeve and become a part of the sleeve opening. When the piece measures the width of the left back piece and the width of the right front piece respectively, stitches are picked up along the edge of the left back piece (the edge that extends from the neck to the middle of the back) and the edge of the right front piece (the edge that extends from the neck opening and to the middle of the chest). The pieces are changed from squares to L-formed shapes where the last part of the pieces is thus the middle of the front piece and the back piece. You bind off at the same time as the pieces are attached to the opposite side, so that a "knit seam" is formed in the middle of the back and front. There is now a gap at the left back and right front, which is fasten with an invisible seam.

Stitches are picked up for a twisted purl on the front piece and the back piece and these are knitted back and forth so that a split is formed in the side. The back piece is 2 cm longer than the front piece. The neck band is made by picking up stitches along the neckline and knitted in the round in twisted rib. It is fastened on the inside at the same time as you bind off, so that the neck edge becomes double. Stitches for sleeves are picked up along the arm openings and they are knitted in the round on a small circular needle as indicated in the pattern. Halfway down the sleeves, the pattern structure changes and the sleeves are finished with a twisted rib.

Techniques:

k = knit

p = purl

twisted knit = knit through the back of the loop.

twisted purl = purl through the back of the loop.

ES (edge stitch) = always knit. This does not apply to the edge stitch in the body's rib, see separate description for this later in the pattern.

Double knitting back and forth (body) = Knit the knits and slip the purls with yarn in front.

Double knitting in the round (sleeves) = Row 1: Knit the knits and slip the purls with yarn in front.
Row 2: Slip the knits with the yarn in back, purl the purls.

Doble moss stitches in the hight =

1.row: *1 k, 1 p *, repeat from *-*.

2.row: k over k and p over p.

3.row: *1 p, 1 k *, repeat from *-*.

4.row: p over p and k over k.

Work these four rows over again.

3 needle bind off: Hold the needles with the wrong sides towards each other. Use a third needle and knit 1 st on each needle together, knit two more together and then slip 1st st over the next. Repeat knitting 2 tog and then bind off. Video (note here it's done with the right sides facing each other, but the technique is similar): <https://www.garnstudio.com/video.php?id=49&lang=en>

BEGIN HERE

Left side of the body

Knit from the bottom up as a long rectangle. You start at the front and gradually shape the neck.

Cast on 38 (46) 49 sts on circular needle 7.0 mm (60-80 cm). Purl all sts.

Insert stitch markers to separate the pattern like this (diagram B is worked as many times as the number of stitches allows) from the knit side:

1 ES, P 1 (1) 4, diagram A (8 sts), P 3, diagram B (24 (32) 32 sts), 1 ES.

The purl sts before and between the diagrams are always worked knit on the wrong side.

Work the diagrams and purl sts with an edge stitch in both sides until your work measures 24 (28) 32 cm.

Now you will make the neck opening:

Always bind off the sts on the wrong side.

Row 1 (purl side): bind off 4 sts, knit the sts as they show and after diagrams.

Row 2 (knit side): knit the sts as they show and after diagrams.

Row 3 (purl side): bind off 2 sts, knit the sts as they show and after diagrams.

Row 4: as row 2.

Row 5: bind off 1 st, knit the sts as they show and after diagrams.

Row 6: as row 2.

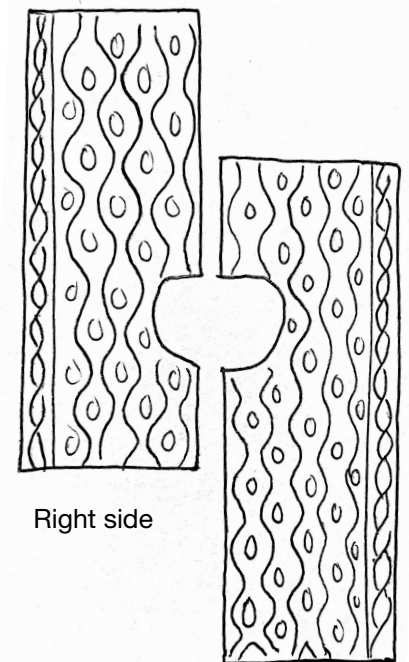
Row 7: as row 5.

Row 8: as row 2.

Continue as before over the remaining sts until your work measures approx 40 (43) 46 cm.

From the knit side: increase with 8 sts at the end of the row.

Continue as before: 1 ES, P 1 (1) 4 , diagram A (8 sts), P 3, diagram B (24 (32) 32 sts), 1 ES (the purl sts before and between the diagrams are always worked knit on the wrong side). Continue until your work measures approx 58 (65) 69 cm. Bind off.



Left side

Right side of the body

Knit from the bottom up as a long rectangle. You start at the back and when you reach the shoulder you will make decreases for the neck.

Cast on 38 (46) 49 sts on circular needle 7.0 mm (60-80 cm). Purl all sts.

Insert stitch markers to separate the pattern like this (diagram B is worked as many times as the number of stitches allows) from the knit side:

1 ES, P 1 (1) 4, diagram A (8 sts), P 3, diagram B (24 (32) 32 sts), 1 ES.

The purl sts before and between the diagrams are always worked knit on the wrong side.

Work the diagrams and purl sts with an edge stitch in both sides until your work measures 37 (41) 45 cm.

Now you will make the neck opening:

Row 1 (purl side): bind off 8 sts, knit the sts as they show and after diagrams.

Row 2 (knit side): knit the sts as they show and after diagrams.

Continue by knitting the established pattern until your work measures 46 (49) 57 cm.

Now you will increase for the neck opening.

Row 1 (knit side): knit the sts as they show and after diagrams, increase 1 st.

Row 2 (purl side): knit the sts as they show and after diagrams

Row 3: knit as row 1

Row 4: knit as row 2

Row 5: knit the sts as they show and after diagrams, increase 2 sts.

Row 6: knit as row 2

Row 7: knit the sts as they show and after diagrams, increase 4 sts.

Continue as before: 1 ES, 1 (1) 4 p, diagram A (8 sts), 3 p, diagram B (24 (32) 32 sts), 1 ES (the purl sts before and between the diagrams are always worked knit on the wrong side). Continue until your work measures approx 58 (65) 69 cm. Bind off.

You have now knitted two pieces that should look like the drawing above. To complete the body, the lower part of the right front piece and the lower part of the left back piece are missing. These parts are knitted by picking up stitches along the outer edge of both pieces and knitted as rectangles from there. This means that the knitting direction goes in the opposite direction compared to the two pieces you have knitted so far.

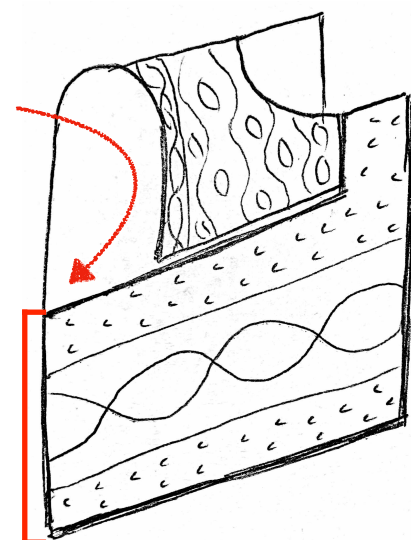
Lower part of the right front piece

Pick up 29 (35) 39 sts along the outer edge of the right back piece (the edge where the cable - diagram A - is placed) with a circular needle 7.0 mm (60-80 cm). Begin from the lower corner and pick up the stitches from down up, approx. 1 st in every second row. Now you should have reached approx. 16 (19) 22 cm up the right back piece. Purl all sts.

The pattern is established and separated by markers as follows:

1 ES, 5 (8) 10 sts double moss stitch, diagram C, 5 (8) 10 sts double moss stitch, 1 ES. *Double moss stitch in the height = see techniques.*

Knit the pattern until your work measures 3 cm (corresponds to the armhole) + the width of the right front piece. This corresponds to



Lower part of the right front piece

approx 24 (28) 31 cm from where you picked up the stitches.

Row 1 (knit side): Knit as sts shows and after diagrams. Pick up 10 (12) 14 sts along the middle edge of the upper front piece. The new sts are knitted using moss stitch.

Row 2 (wrong side): 1 ES, moss stitch until you reach diagram C (make sure that you start with knit and purl stitches so it matches the existing moss stitch-pattern), knit diagram C, 5 (8) 10 sts using moss stitch, 1 ES.

Repeat row 1 and 2 until the work measures 30 (34) 37 cm from where you picked up the stitches.

Now the piece is fasten to the right edge of the left front piece through bind off. Set the work aside while you pick up stitches along the right edge of the left front piece with a new circular needle 7.0 mm. Pick up 39 (47) 53 sts from the neck down. Place the two back pieces next to each other with wrong sides facing each other. Start with "3 needle bind off" (see techniques). Continue like this out the needles. The result will be a large seam on the knit side (see picture).



Lower part of the left back piece

Pick up 29 (35) 39 sts along the outer edge of the left front piece (the edge where the cable - diagram A - is placed) with a circular needle 7.0 mm (60-80 cm). Begin from the lower corner and pick up the stitches from down up, approx. 1 st in every «knot» - st. (every second row). Now you should have reached approx. 16 (19) 22 cm up the left front piece. Purl all sts.

The pattern is established and separated by markers as follows:

1 ES, 5 (8) 10 sts double moss stitch, diagram C, 5 (8) 10 sts double moss stitch, 1 ES.

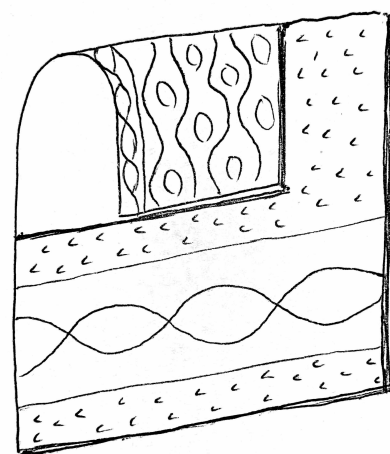
Knit the pattern until your work measures 3 cm (corresponds to the armhole) + the width of the right front piece. This means you have to knit in total approx 24 (28) 31 cm from where you picked up the stitches.

Row 1 (knit side): Knit as sts show and after diagrams. Pick up 25 (35) 49 sts along the right edge of the left back piece (to the neck).

Row 2 (wrong side): 1 ES, moss stitch until you reach diagram C (make sure that you start with knit and purl stitches so it matches the existing moss stitch-pattern), knit diagram C, 5 (8) 10 sts using moss stitch, 1 ES.

Repeat row 1 og 2 until the work measures 30 (34) 37 cm from where you picked up the stitches.

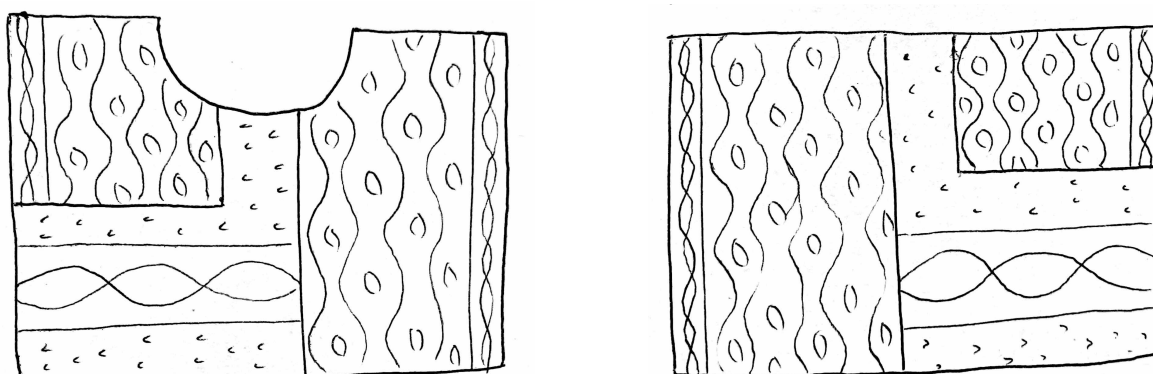
Fasten the piece to the edge of the right back piece in the same way as you did in the front. Here you need to pick up 54 (70) 88 sts with a new needle from the neck and down along the right back piece.



Lower part of the left back piece

There's now a "gap" on the left back piece and right front piece. These are attached using an invisible seam with needle and thread. Remember that the first 3 cm is placed under the sleeve opening and should not be fastened.

Now the body looks like this from the front and back:



Neck band

Pick up 86 (90) 96 sts using a circular needle 5.0 mm (40 cm) along the neckline. This corresponds to picking up approx 1 st in every «knot»-sts around the opening.

Work twisted rib (1 twisted knit, 1 purl) until the rib measures 9 cm. Fold it in and down and bind off while attaching it to the inner edge of the neck opening. Make sure that the rib isn't uneven as you attach it and loosely bind off.

Body rib

The rib is worked back and forth over the front piece and the back piece. There will be a split in the sides and the rib edge of the back piece is knitted 2 cm longer.

Lay the work flat on the floor. Put markers in the sides (103 (115) 125 sts in each piece).

From the knit side, pick up 103 (115) 125 sts along the front. The pattern will consist of following: 1 ES, 101 (113) 123 sts in twisted rib (start and end with 1 twisted knit), 1 ES. Here, the edge stitch is worked differently: The first stitch on the needle is always slipped to the right needle and the last stitch on the needle is always knitted straight.

Twisted rib is knitted back and forth as follows:

Row 1 (right side): 1 ES, *K1 twisted, purl 1*, repeat *-* until 1 st remains, 1 ES.

Row 2 (wrong side): 1 ES, *1 twisted purl, 1 knit*, repeat *-* until 1 st remains, 1 ES.

Repeat rows 1 and 2 until the rib measures 12 cm or the desired length. Finish with 2 rows «double knitting» (see Techniques). Bind off with tubular bind off or the method of your choice.

Knit the rib of the back piece in the same way, but the length should be approx. 14 cm.

Sleeves

Left sleeve

Pick up 56 (64) 66 sts with circular needle 7.0 mm (40 cm). This corresponds to picking up approx. 1 st in every st around the opening. Place a stitch marker in the middle under the sleeve, this is where the round begin.

The pattern is established as follows:

20 (24) 25 sts in moss stitch, diagram C (17 sts), 19 (23) 24 sts in moss stitch.

Knit until the sleeve measures 22 cm. For XL/XXL: decrease 2 stitches in a random place by knitting 2 sts together (= 64 sts).

Now the pattern will be changed to diagram B. Start in row 3 in the diagram.

Knit diagram B in the round until the sleeve measures approx. 40 (40) 42 cm.

Change to circular needle 5.0 mm (60-80 cm and use magic loop technique) and knit twisted purl as follows:

K1 twisted, P1, repeat from *-* the whole round. Knit until the rib measures approx. 12 cm.

Finish with 2 rows «double knitting» (see Techniques). Bind off with tubular bind off or the method of your choice.

Knit the right sleeve in the same way.

Fasten threads, wash and dry the sweater flat.

Congratulations, you've reached the finish line!

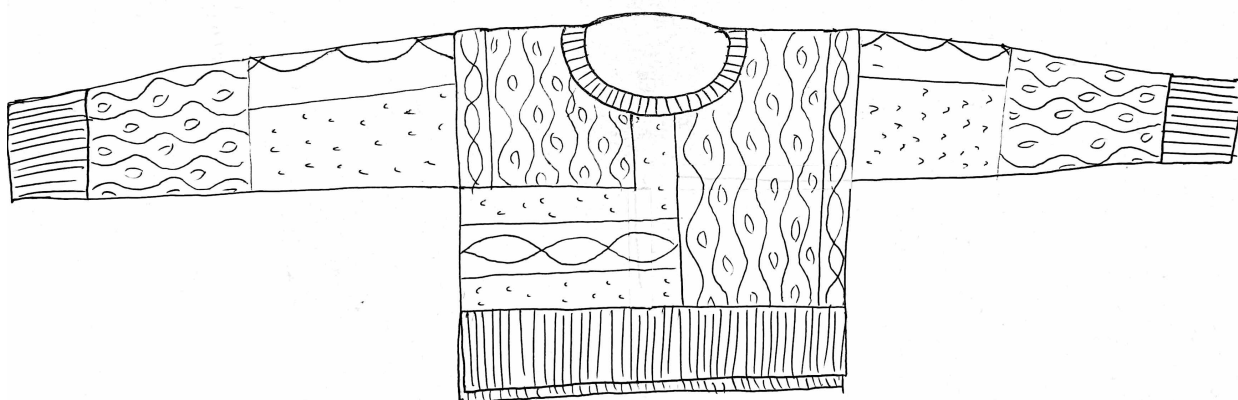
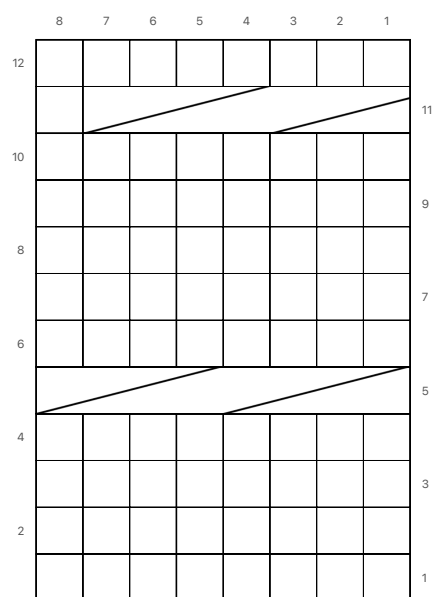


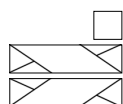
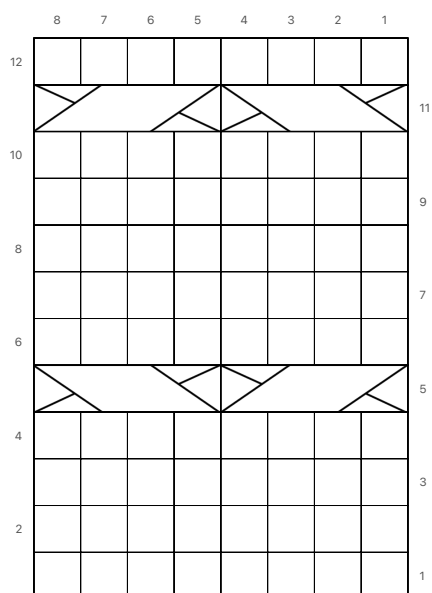
Diagram A



Knit on the right side and purl on the wrong side

Place 4 sts on a cable needle behind the work, knit 4 sts, knit 4 from the cable needle

Diagram B

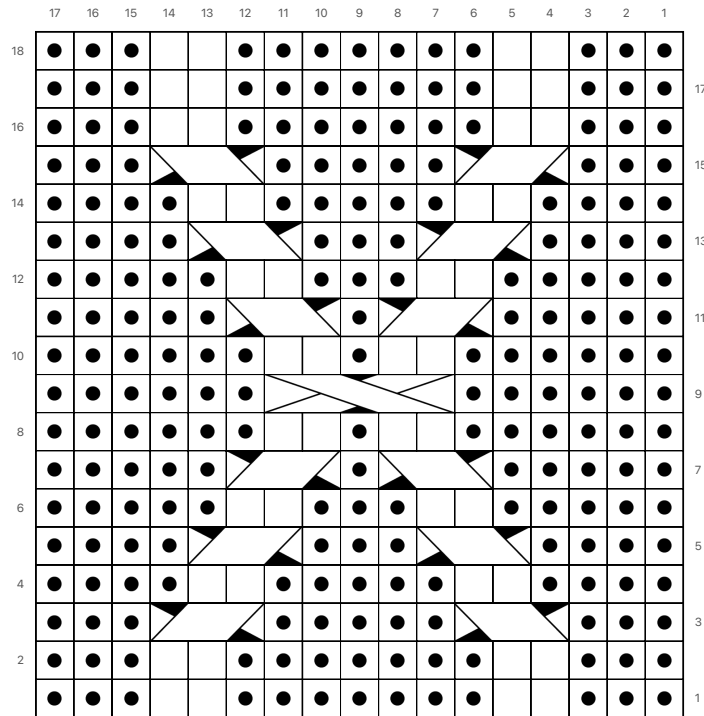


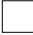




Knit on the right side and purl on the wrong side

Place 2 sts on a cable needle in front of the work, knit 2 sts, knit 2 from the cable needle

Place 2 sts on a cable needle behind the work, knit 2 sts, knit 2 from the cable needle

Diagram C



-  Knit on the right side and purl on the wrong side
-  Purl on the right side and knit on the wrong side
-  Place 2 sts on a cable needle in front of the work, purl 1, knit 2 from the cable needle
-  Place 1 sts on a cable needle behind the work, knit 2, purl 1 from the cable needle
-  Place 2 sts on a cable needle in front of the work, place 1 st on a helping needle behind the work, knit 2, purl 1 from the helping needle behind the work, knit 2 from the cable needle in front of the work

Knits from Oslo ©COPYRIGHT 2022

Instagram: @knitsfromoslo

The pattern is for private use only. Feel free to share your version of Northwest Sweater on Instagram.

I would love to see! #northwestsweater #knitsfromoslo