

B e b a B l a n k e t  
*modern crochet designs*

# MY PRECIOUS BABY GIRL

Overlay Mosaic Crochet in Rows | US terminology  
**MOSAIC CROCHET CHARTS &  
WRITTEN PATTERN**



© BebaBlanket, 2022

You can use the pattern to create any item you want and sell your finished item if you wish, but you have no right to claim that this pattern is created by you, nor may you sell the pattern or share the file of the written pattern and/or videos free. You have no right to create a video tutorial for this pattern without my written permission.

BebaBlanket E-shop <https://bebablanket.com/>



## GENERAL INFO:

The mosaic crochet pattern MY PRECIOUS BABY GIRL is a perfect pattern for any little princess. The pattern allows you to create any size blanket or other project you wish as you can easily adjust the number of repeats in both width and height. The pattern requires two highly contrasting colors.

**EXPERIENCE LEVEL:** Intermediate

**LANGUAGE & TERMINOLOGY:** English, US

**TECHNIQUE:** overlay mosaic crochet in rows

**PATTERN REPEAT:** 40+11

**PATTERN FILE SIZE:** 16 pages

## THE PATTERN INCLUDES:

- introductory information about mosaic crochet basics and links to video tutorials
- charts with marked X (2 designs)
- written patterns (2 designs)
- 2 optional layouts

## STITCHES & ABBREVIATIONS:

**ch/chs** (chain/chains), **st/sts** (stitch/stitches), **R/Rs** (row/rows), **stsc** (standing single crochet), **sc** (single crochet), **blsc** (back loop single crochet), **stsc** (starting single crochet), **fldc** (front loop double crochet). Special stitches: **exdc** (extended double crochet) – used for the smile only.

Moss st (used for the border) \*1sc, ch1\* x N. On the next R “1sc into ch1 sp, ch1\* x N.

**MOSAIC CROCHET BASICS & USEFUL LINKS:** <https://bebablanket.com/useful-links>

**IMPORTANT!** If you plan to work a double border, read the instructions and watch the video tutorial Double Border. Easy Start. Three Magic Steps before you start your project.

## COLORS:

For this pattern you will need at least two contrasting colors.

## YARN, HOOK & APPROXIMATE SIZE:

The MY PRECIOUS BABY GIRL pattern sample was created using the following yarn:

Yarn weight	#4 (aran/worsted)
Hook size	Clover Amour, 5 mm (H)
Yarn	Color A: Hobbii, World of Yarn Malaga Solids, color 37 Color B: Hobbii, World of Yarn Malaga Print, color 06
Sample size, shape & amount of yarn (width 3 repeats x height 4 repeats) with border	Rectangle width 91 cm / 35.8 in x height 107 cm / 42.1 in (Including 5 cm / 1.97 in border) Color A: 480 g, 792 m / 867 yds Color B: 350 g, 580 m / 635 yds Border: Color B: 280 g, 462 m / 506 yds

You can use any yarn, colors & appropriate hook size that suits your project.

You can find more pattern samples on Ravelry <https://www.ravelry.com/patterns/library/my-precious-baby-girl/people>

## Let's start!

**Color A.** Work a foundation cord (see other options in a file Double Border. Easy Start. Three Magic Steps) as long as you need/want.

The number of stitches has to be a multiple of 40 + 11.

Cut the yarn, fasten off. Start with chart R1 or follow the written pattern. The pattern sample was created and pattern written starting with a foundation cord 131 (40 x 3 repeats +11).

When starting your project, you can replace Rs 1, 2 and 3 in Chart No.1 with two Rs of sc in color A (especially if you do not plan a double border).

### Further in the written pattern

sc=blsc into next st (except 1<sup>st</sup> and last sts on each R, R1 and the last R of our project). First st is always stsc, the last one – sc. Number in front identifies how many sc sts you have to work. R1 are all sc sts except the 1<sup>st</sup> one – stsc.

dc= fldc 2 Rs below. Number in front identifies how many sts you have to work.

[...] repeated part of the pattern.

\*...\* x 3 repeat part of the pattern number of times identified. The number of repeats will depend on how many multiples of 40 you have started your project with.

Each R has the same number of sts - 131 sts.

## MY PRECIOUS BABY GIRL WRITTEN PATTERN. CHART/DESIGN NO. 1

### Row 1. Color A

1stsc, 1sc across. Cut the yarn, fasten off. Total: 131 sts.

### Row 2. Color B

1stsc, 1sc across. Cut the yarn, fasten off. Total: 131 sts.

### Row 3. Color A

1stsc, 4dc, [1sc, 39dc] x 3, 1sc, 4dc, 1sc.

### Row 4. Color B

1stsc, 1sc across.

### Row 5. Color A

1stsc, 4dc, [1sc, 2dc, 3sc, 10dc, 4sc, 1dc, 4sc, 10dc, 3sc, 2dc] x 3, 1sc, 4dc, 1sc.

### Row 6. Color B

1stsc, 4sc, [3sc, 3dc, 13sc, 1dc, 1sc, 1dc, 13sc, 3dc, 2sc] x 3, 6sc.

### Row 7. Color A

1stsc, 4dc, [1dc, 7sc, 11dc, 1sc, 1dc, 1sc, 11dc, 7sc] x 3, 5dc, 1sc.

### Row 8. Color B

1stsc, 4sc, [1sc, 3dc, 1sc, 3dc, 11sc, 1dc, 1sc, 1dc, 11sc, 3dc, 1sc, 3dc] x 3, 6sc.

### Row 9. Color A

1stsc, 4dc, [1dc, 7sc, 6dc, 13sc, 6dc, 7sc] x 3, 5dc, 1sc.

### Row 10. Color B

1stsc, 4sc, [3sc, 3dc, \*9sc, 1dc\* x 2, 9sc, 3dc, 2sc] x 3, 6sc.

### Row 11. Color A

1stsc, 4dc, [1sc, 2dc, 3sc, 9dc, 11sc, 9dc, 3sc, 2dc] x 3, 1sc, 4dc, 1sc.

### Row 12. Color B

1stsc, 4sc, [16sc, 1dc, 7sc, 1dc, 15sc] x 3, 6sc.

### Row 13. Color A

1stsc, 4dc, [1sc, 8dc, 1sc, 6dc, 9sc, 6dc, 1sc, 8dc] x 3, 1sc, 4dc, 1sc.

### Row 14. Color B

1stsc, 4sc, [9sc, 1dc, 7sc, 1dc, 5sc, 1dc, 7sc, 1dc, 8sc] x 3, 6sc.

### Row 15. Color A

1stsc, 3dc, 1sc, [2sc, 6dc, 3sc, 6dc, 7sc, 6dc, 3sc, 6dc, 1sc] x 3, 2sc, 3dc, 1sc.

### Row 16. Color B

1stsc, 3sc, 1dc, [2dc, 6sc, 1dc, 1sc, 1dc, 7sc, 1dc, 3sc, 1dc, 7sc, 1dc, 1sc, 1dc, 6sc, 1dc] x 3, 2dc, 4sc.

### Row 17. Color A

1stsc, 1dc, 3sc, [4sc, 2dc, 7sc, 1dc, 13sc, 1dc, 7sc, 2dc, 3sc] x 3, 4sc, 1dc, 1sc.

**Row 18. Color B**

1stsc, 1sc, 3dc, [1sc, 3dc, 2sc, \*1dc, 1sc\* x 3, 1dc, 6sc, 1dc, 1sc, 1dc, 6sc, \*1dc, 1sc\* x 3, 1dc, 2sc, 3dc] x 3, 1sc, 3dc, 2sc.

**Row 19. Color A**

1stsc, 1dc, 3sc, [4sc, 1dc, 9sc, 5dc, 3sc, 5dc, 9sc, 1dc, 3sc] x 3, 4sc, 1dc, 1sc.

**Row 20. Color B**

1stsc, 3sc, 1dc, [2dc, 3sc, \*1dc, 1sc\* x 4, \*1dc, 6sc\* x 2, \*1dc, 1sc\* x 4, 1dc, 3sc, 1dc] x 3, 2dc, 4sc.

**Row 21. Color A**

1stsc, 3dc, 1sc, [2sc, 3dc, \*9sc, 2dc\* x 2, 9sc, 3dc, 1sc] x 3, 2sc, 3dc, 1sc.

**Row 22. Color B**

1stsc, 4sc, [6sc, \*1dc, 1sc\* x 3, 1dc, 3sc, 1dc, 7sc, 1dc, 3sc, \*1dc, 1sc\* x 3, 1dc, 5sc] x 3, 6sc.

**Row 23. Color A**

1stsc, 4dc, [1sc, 5dc, \*3sc, 1dc\* x 2, 3sc, 7dc, \*3sc, 1dc\* x 2, 3sc, 5dc] x 3, 1sc, 4dc, 1sc.

**Row 24. Color B**

1stsc, 4sc, [14sc, 1dc, 11sc, 1dc, 13sc] x 3, 6sc.

**Row 25. Color A**

1stsc, 4dc, [1sc, 2dc, 3sc, 7dc, 2sc, 4dc, 3sc, 4dc, 2sc, 7dc, 3sc, 2dc] x 3, 1sc, 4dc, 1sc.

**Row 26. Color B**

1stsc, 4sc, [3sc, 3dc, 7sc, 1dc, 3sc, 1exdc into 1<sup>st</sup> of 3 sc 2 Rs below, skip 1 st behind fpxdc, 5sc, 1exdc into 3<sup>rd</sup> of 3 sc 2 Rs below, skip 1 st behind fpexdc, 3sc, 1dc, 7sc, 3dc, 2sc] x 3, 6sc.

**Row 27. Color A**

1stsc, 4dc, [1dc, 7sc, 4dc, 2sc, 3dc, 1sc, 5dc, 1sc, 3dc, 2sc, 4dc, 7sc] x 3, 5dc, 1sc.

**Row 28. Color B**

1stsc, 4sc, [\*1sc, 3dc\* x 2, 4sc, 1dc, 15sc, 1dc, 4sc, 3dc, 1sc, 3dc] x 3, 6sc.

**Row 29. Color A**

1stsc, 4dc, [1dc, 7sc, 4dc, 1sc, 15dc, 1sc, 4dc, 7sc] x 3, 5dc, 1sc.

**Row 30. Color B**

1stsc, 4sc, [3sc, 3dc, 6sc, 1dc, 15sc, 1dc, 6sc, 3dc, 2sc] x 3, 6sc.

**Row 31. Color A**

1stsc, 4dc, [1sc, 2dc, 3sc, 6dc, 2sc, 4dc, 1sc, 3dc, 1sc, 4dc, 2sc, 6dc, 3sc, 2dc] x 3, 1sc, 4dc, 1sc.

**Row 32. Color B**

1stsc, 4sc, [\*13sc, 1dc\* x 2, 12sc] x 3, 6sc.

**Row 33. Color A**

1stsc, 4dc, [1sc, 9dc, 1sc, 2dc, 2sc, 11dc, 2sc, 2dc, 1sc, 9dc] x 3, 1sc, 4dc, 1sc.

**Row 34. Color B**

1stsc, 4sc, [10sc, 1dc, 3sc, 1dc, 11sc, 1dc, 3sc, 1dc, 9sc] x 3, 6sc.

**Row 35. Color A**

1stsc, 3dc, 1sc, [2sc, 8dc, 3sc, 1dc, 3sc, 7dc, 3sc, 1dc, 3sc, 8dc, 1sc] x 3, 2sc, 3dc, 1sc.

**Row 36. Color B**

1stsc, 3sc, 1dc, [2dc, 10sc, 1dc, 3sc, 1dc, 7sc, 1dc, 3sc, 1dc, 10sc, 1dc] x 3, 2dc, 4sc.

**Row 37. Color A**

1stsc, 1dc, 3sc, [4sc, 8dc, 17sc, 8dc, 3sc] x 3, 4sc, 1dc, 1sc.

**Row 38. Color B**

1stsc, 1sc, 3dc, [1sc, 3dc, 10sc, 3dc, 7sc, 3dc, 10sc, 3dc] x 3, 1sc, 3dc, 2sc.

**Row 39. Color A**

1stsc, 1dc, 3sc, [4sc, 7dc, 9sc, 1dc, 9sc, 7dc, 3sc] x 3, 4sc, 1dc, 1sc.

**Row 40. Color B**

1stsc, 3sc, 1dc, [2dc, 12sc, 1dc, 1sc, 1dc, 7sc, 1dc, 1sc, 1dc, 12sc, 1dc] x 3, 2dc, 4sc.

**Row 41. Color A**

1stsc, 3dc, 1sc, [2sc, 10dc, 3sc, 1dc, 3sc, 3dc, 3sc, 1dc, 3sc, 10dc, 1sc] x 3, 2sc, 3dc, 1sc.

To continue this design work Rs 2-41 as many times as you want and finish your project with one row of sc in color A.

# MY PRECIOUS BABY GIRL WRITTEN PATTERN.

## CHART/DESIGN NO. 2

If you are working this design after you worked already Design/Chart 1, skip R1 and work only repeated part of the pattern: Rs2-41.

### Row 1. Color A

1stsc, 1sc across. Cut the yarn, fasten off. Total: 131 sts.

### Row 2. Color B

1stsc, 1sc across. Cut the yarn, fasten off. Total: 131 sts.

### Row 3. Color A (when working this R of this design/chart for the 1<sup>st</sup> time)

1stsc, dc across, the last st - 1sc.

### Row 3. Color A (when working this R of this design/chart for the 2<sup>nd</sup>, 3<sup>rd</sup>...etc. time)

1stsc, 4dc, [\*1sc, 1dc\* x 20] x 3, 1sc, 4dc, 1sc.

### Row 4. Color B

1stsc, 1sc across.

### Row 5. Color A

1sts, 4dc, [\*1sc, 2dc, 3sc, 2dc\* x 5] x 3, 1sc, 4dc, 1sc.

### Row 6. Color B

1stsc, 4sc, [3sc, \*3dc, 5sc\* x 4, 3dc, 2sc] x 3, 6sc.

### Row 7. Color A

1sts, 4dc, [\*1dc, 7sc\* x 5] x 3, 5dc, 1sc.

### Row 8. Color B

1stsc, 4sc, [\*1sc, 3dc\* x 10] x 3, 6sc.

### Row 9. Color A

1sts, 4dc, [\*1dc, 7sc\* x 5] x 3, 5dc, 1sc.

### Row 10. Color B

1stsc, 4sc, [3sc, \*3dc, 5sc\* x 4, 3dc, 2sc] x 3, 6sc.

### Row 11. Color A

1sts, 4dc, [\*1sc, 2dc, 3sc, 2dc\* x 5] x 3, 1sc, 4dc, 1sc.

### Row 12. Color B

1stsc, 1sc across.

### Row 13. Color A

1stsc, 4dc, [\*1sc, 1dc\* x 20] x 3, 1sc, 4dc, 1sc.

### Row 14. Color B.

1stsc, 1sc across.

### Row 15. Color A.

1sts, 3dc, 1sc, [2sc, \*2dc, 1sc, 2dc, 3sc] x 4, 2dc, 1sc, 2dc, 1sc] x 3, 2sc, 3dc, 1sc.

### Row 16. Color B.

1stsc, 3sc, 1dc, [2dc, \*5sc, 3dc\* x 4, 5sc, 1dc] x 3, 2dc, 4sc.

### Row 17. Color A.

1stsc, 1dc, 3sc, [4sc, \*1dc, 7sc\* x 4, 1dc, 3sc] x 3, 4sc, 1dc, 1sc.

### Row 18. Color B.

1stsc, 1sc, 3dc, [\*1sc, 3dc\* x 10] x 3, 1sc, 3dc, 2sc.

### Row 19. Color A.

1stsc, 1dc, 3sc, [4sc, \*1dc, 7sc\* x 4, 1dc, 3sc] x 3, 4sc, 1dc, 1sc.

### Row 20. Color B.

1stsc, 3sc, 1dc, [2dc, \*5sc, 3dc\* x 4, 5sc, 1dc] x 3, 2dc, 4sc.

### Row 21. Color A.

1stsc, 3dc, 1sc, [2sc, \*2dc, 1sc, 2dc, 3sc\* x 4, \*2dc, 1sc\* x 2] x 3, 2sc, 3dc, 1sc.

### Row 22. Color B.

1stsc, 1sc across.

### Row 23. Color A.

1stsc, 4dc, [\*1sc, 1dc\* x 20] x 3, 1sc, 4dc, 1sc.

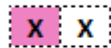
### Rows 24-41. Repeat Rs4-21.

To continue this design work Rs 2-41 as many times as you want and finish your project with one row of sc in color A.

# MY PRECIOUS BABY GIRL LEGEND



The main pattern repeat



Front loop double crochet 2 rows below



Back loop single crochet



Single crochet

**LR**

The last row to complete your project

**B**

Border stitch

The first stitch on each row - standing single crochet

The last stitch on each row - single crochet

**C**

Color

**A**

Background color

**B**

Pattern color



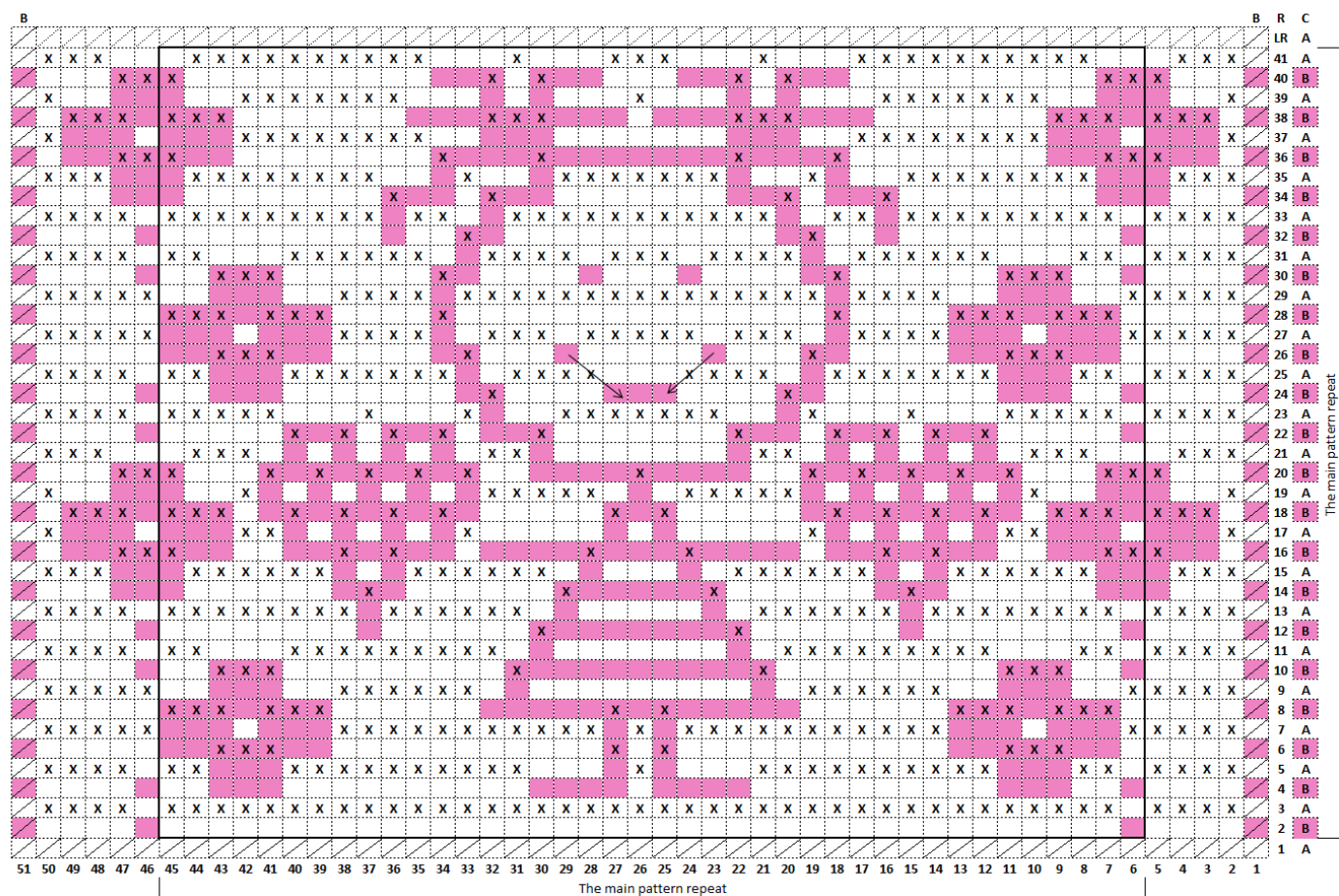
Front loop extended double crochet two rows below  
worked into the stitch according to the chart

**3**

When working this chart for the first time, replace all blsc with fldc

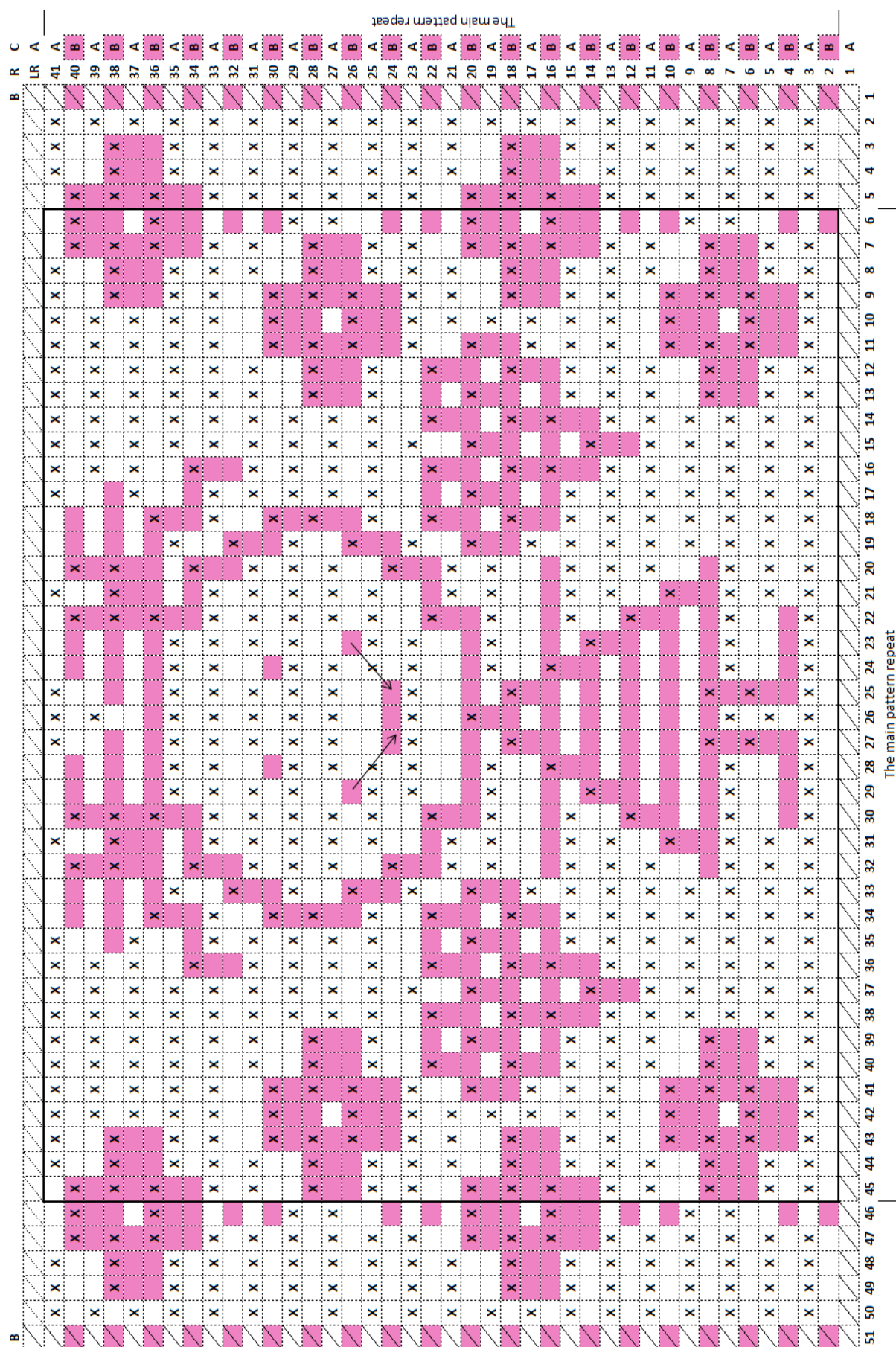
# MY PRECIOUS BABY GIRL CHART NO.1

## (Smaller, horizontal)



# MY PRECIOUS BABY GIRL CHART NO.1

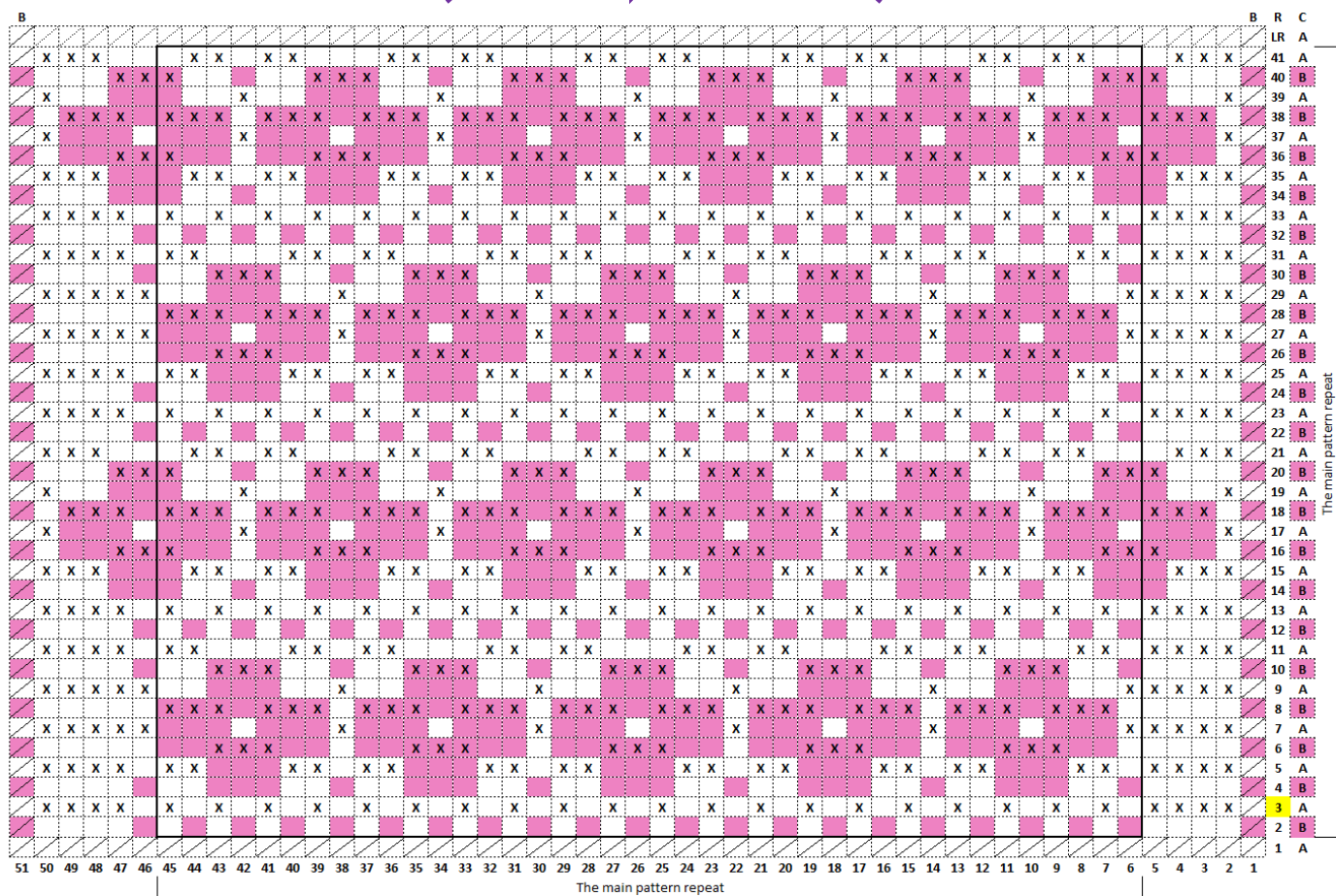
## (Larger, vertical)





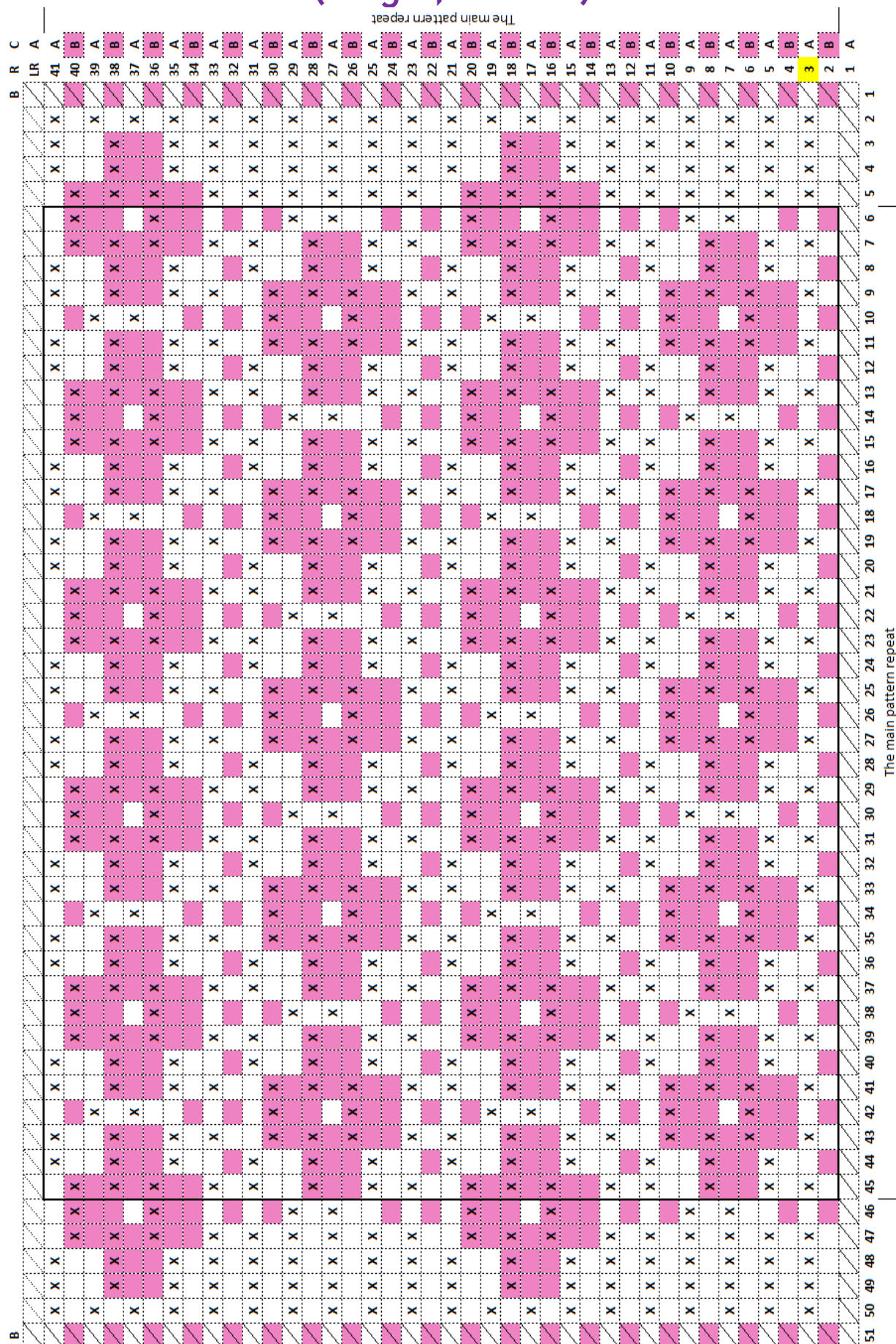
# MY PRECIOUS BABY GIRL CHART NO.2

## (Smaller, horizontal)

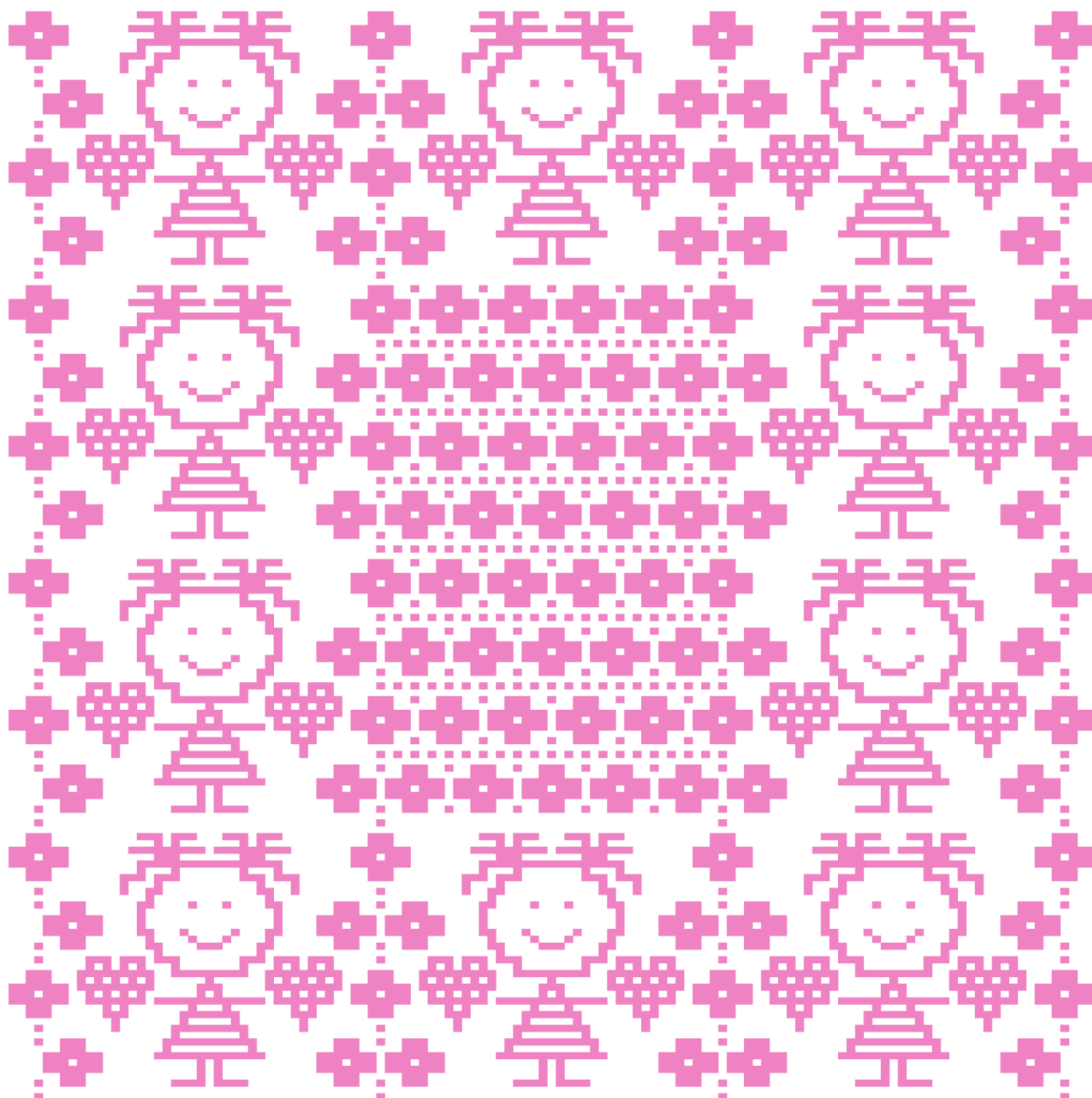


# MY PRECIOUS BABY GIRL CHART NO.2

## (Larger, vertical)



# MY PRECIOUS BABY GIRL LAYOUT No.1

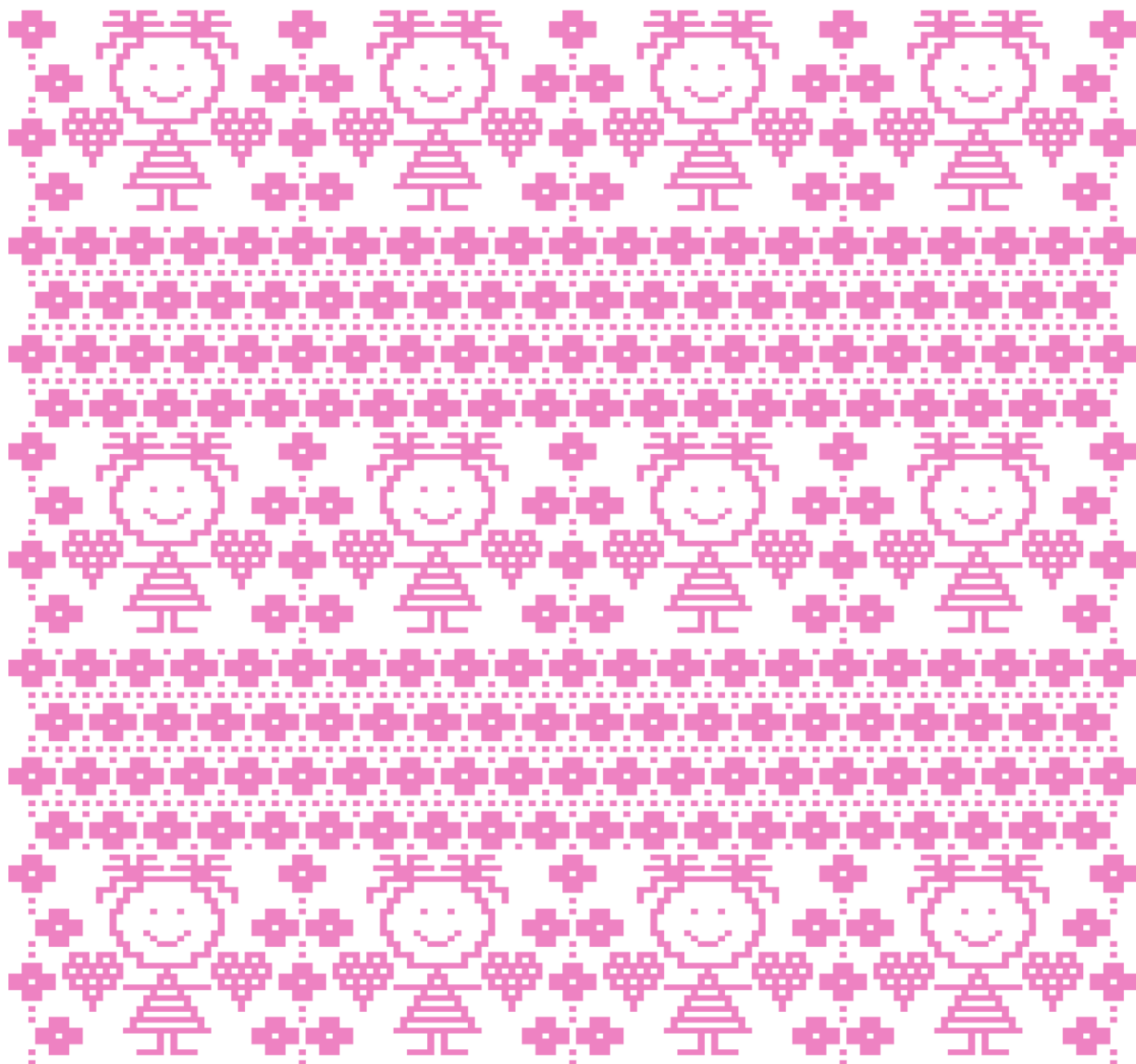


# MY PRECIOUS BABY GIRL HOW TO COMBINE THE DESIGNS FOR LAYOUT No.1

<b>CHART NO.1</b> Rs 2-LR Sts 6-51	<b>CHART NO.1</b> Rs 2-LR Sts 6-45	<b>CHART NO.1</b> Rs 2-LR Sts 1-45
<b>CHART NO.1</b> Rs 2-41 Sts 6-51	<b>CHART NO.2</b> Rs 2-41 Sts 6-45	<b>CHART NO.1</b> Rs 2-41 Sts 1-45
<b>CHART NO.1</b> Rs 2-41 Sts 6-51	<b>CHART NO.2</b> Rs 2-41 Sts 6-45	<b>CHART NO.1</b> Rs 2-41 Sts 1-45
<b>CHART NO.1</b> Rs 1-41 Sts 6-51	<b>CHART NO.1</b> Rs 1-41 Sts 6-45	<b>CHART NO.1</b> Rs 1-41 Sts 1-45



## MY PRECIOUS BABY GIRL LAYOUT No.2



## MY PRECIOUS BABY GIRL HOW TO COMBINE THE DESIGNS FOR LAYOUT No.2

<b>CHART NO.1</b> Rs 2-LR Sts 6-51	<b>CHART NO.1</b> Rs 2-LR Sts 6-45	<b>CHART NO.1</b> Rs 2-LR Sts 6-45	<b>CHART NO.1</b> Rs 2-LR Sts 1-45
<b>CHART NO.2</b> Rs 2-41 Sts 6-51	<b>CHART NO.2</b> Rs 2-41 Sts 6-45	<b>CHART NO.2</b> Rs 2-41 Sts 6-45	<b>CHART NO.2</b> Rs 2-41 Sts 1-45
<b>CHART NO.1</b> Rs 2-41 Sts 6-51	<b>CHART NO.1</b> Rs 2-41 Sts 6-45	<b>CHART NO.1</b> Rs 2-41 Sts 6-45	<b>CHART NO.1</b> Rs 2-41 Sts 1-45
<b>CHART NO.2</b> Rs 2-41 Sts 6-51	<b>CHART NO.2</b> Rs 2-41 Sts 6-45	<b>CHART NO.2</b> Rs 2-41 Sts 6-45	<b>CHART NO.2</b> Rs 2-41 Sts 1-45
<b>CHART NO.1</b> Rs 1-41 Sts 6-51	<b>CHART NO.1</b> Rs 1-41 Sts 6-45	<b>CHART NO.1</b> Rs 1-41 Sts 6-45	<b>CHART NO.1</b> Rs 1-41 Sts 1-45

# MY PRECIOUS BABY GIRL BORDER

## **Border added to the pattern sample (all rounds worked in color B):**

Double border worked on both sides Rs 1-9.

Round 1 sc all around, ch1 for the corners, skipping the first and the last sts on the first and the last rows when working the border on the top and bottom sides. Do not skip any stitches on the left and right sides.

Rounds 2-9 moss st all around, corner: 1sc, ch1, 1sc.

Round 10 moss st all around through loops of both sides of the border with corners (sc, ch1, sc) into ch1 sp.

More border ideas you can find in the written guide "Double Border. Easy Start. Three Magic Steps" (free) <https://bebablanket.com/useful-links>



You can use the pattern to create any item you want and sell your finished item if you wish, but you have no right to claim that this pattern is created by you, nor may you sell the pattern or share the file of the written pattern and/or videos free. You have no right to create a video tutorial for this pattern without my written permission.



For the pattern support kindly join the Crochet patterns by BebaBlanket group on Facebook <https://www.facebook.com/groups/BebaBlanketPatterns>



When sharing your creation on social media please include the pattern name or tag the designer  
#bebablanket

Thank you for your valuable support!

The pattern was created by BebaBlanket  
October, 2021

<https://www.ravelry.com/stores/bebablanket-designs>

The pattern was tested by: Vilma Cipriani-Ramsey, Dana L. Bouchard, Tania Leis, Tamara Bollo, Mirjam Annaars

### **What's coming next?**

Overlay mosaic crochet in rows (mitered square, BiS Series) MITERED APACHE SQUARE  
Pattern release date 7 May, 2022



Want to be informed about all new released patterns and special offers?  
Welcome to subscribe to BebaBlanket Newsletter:

<https://bebablanket.com/>