



Lunae

by Natasja Hornby

— Learn the rules. And break them anyway —

Lunae's most prominent design feature are the beautiful, but easy to work horizontal and vertical mosaic bands. But she has more; lots of amazing texture, a lovely, wearable shape, a fun construction, and, if you're in to them, tassels!

And yes, it seems like a lot, but the well thought out details and the meticulously balanced proportions prevent it from being over-the-top in any way. Although Lunae is a stunner and an eye catcher, she is also remarkably easy to wear and effortlessly elegant. Wear yours with pride and a very wide smile!

CONSTRUCTION

Lunae has a relatively shallow, elongated triangular shape. A prominent design feature are the vertical and horizontal Mosaic bands that adorn the shawl. To achieve this look the Upper Body of the shawl is worked from side to side. You will start at the right corner, working towards the center of the Upper Shawl Body while increasing to shape the shawl. Once you've reached the center, decreases will be worked until you reach the left corner of the Upper Shawl Body. For the Lower Shawl Body, stitches are picked up at the lower edge of the Upper Shawl Body. From here on you will be working downwards, further shaping the shawl by increasing at the sides and the center of your shawl.

SIZE

Approx 200 cm / 78.75" wingspan along the top edge and 55.5 cm / 21.75" deep.

NEEDLES

One 100 cm / 40" circular needle in size needed to obtain gauge listed.
Suggested needle size: 3.75 mm / US #5.

YARN

Fingering weight yarn, preferably with some elasticity and bounce (wool or a wool blend).

MC (without tassels) approx 350 m / 385 yards.

CC1 approx 350 m / 385 yards.

CC2 approx 430 m / 470 yards.

The tassels are optional. The sample has 41 tassels, which used approx 150 m / 165 yards of the MC.

Sample shown in Snaeldan 2-ply (MC and CC2); 100% wool, 360 m / 394 yards per 100 gr and Hillesvåg Ullvarefabrikk Sølje pelsullgarn (CC1); 100% wool, 350 meters / 383 yards per 100 gr.

Colorways

MC: Mist

CC1: Lys marine

CC2: Fleece white

MATERIALS

Stitch markers, tapestry needle, blocking pins, blocking mats, blocking wires.

GAUGE

Measured after blocking.

Star Stitch pattern: 29 sts and 32 rows = 10 x 10 cm / 4 x 4".

Mosaic Colorwork: 25 sts and 50 rows = 10 x 10 cm / 4 x 4".

TECHNIQUES

Star Stitch Pattern

Mutiple of 3 sts + 2 sts.

All Star Stitch Pattern sections are worked in MC.

Row 1 (RS): k1, (k3, pass first of the 3 knit sts over the 2nd and the 3rd st) to last st, k1.

Row 2 (WS): p1, (M1pR, p2) to last st, p1.

Row 3: k2, (k3, pass first of the 3 knit sts over the 2nd and the 3rd st) to end.

Row 4: p2, (M1pR, p2) to end.

***Note 1:** the instruction to k3, pass first of the 3 knit sts over the 2nd and the 3rd st is abbreviated as k3pso2s.*

***Note 2:** while working the Star Stitch Pattern, sts are reduced in the RS rows and restored in the WS rows. Therefore, sts should only be counted after working a WS row.*

Mosaic Colorwork

On page 4, next to Mosaic Colorwork Chart 1 & 2 you'll find the explanation for working a mosaic pattern and reading the Charts.



DIRECTIONS

UPPER SHAWL BODY

With MC, CO 3 sts.

Next row (WS): k1, p2.

Set up

Row 1 (RS) - increase row: k to last st, M1R, k1; 4 sts.

Row 2 (WS): k1, p to end.

Work Row 1 & 2 four more times; 8 sts.

Start Star Stitch Pattern

Next row (RS) - increase row: k2, k3pso2s, k2, M1R, k1.

Next row (WS): k1, p5, M1pR, p to end; 9 sts.

Star Stitch Pattern Sequence; increasing

Row 1 (RS) - increase row: k1, (k3pso2s) to last 2 sts, k1, M1R, k1.

Row 2 (WS): k1, p2, (M1pR, p2) to last st, p1; 10 sts.

Row 3 - increase row: k2, (k3pso2s) to last 2 sts, k1, M1R, k1.

Row 4: k1, p4, (M1pR, p2) to end; 11 sts.

Row 5 - increase row: k1, (k3pso2s) to last st, M1R, k1.

Row 6: k1, p1, (M1pR, p2) to last st, p1; 12 sts.

Row 7 - increase row: k2, (k3pso2s) to last st, M1R, k1.

Row 8: k1, p3, (M1pR, p2) to end; 13 sts.

Row 9 - increase row: k1, (k3pso2s) to last 3 sts, k2, M1R, pass first of the 3 sts over the 2nd and 3rd st, k1.

Row 10: k1, (M1pR, p2) to last st, p1; 14 sts.

Row 11 - increase row: k2, (k3pso2s) to last 3 sts, k2, M1R, pass first of the 3 sts over the 2nd and 3rd st, k1.

Row 12: k1, p2, (M1pR, p2) to end; 15 sts.

Work these 12 rows five more times; 45 sts.

Break MC.

Narrow Stripe Sequence

Stitches are slipped pwise.

Row 1 (RS): with CC2, k to end.

Row 2 (WS): k to last st, p1.

Row 3: with CC1, sl2, (k1, sl1 wyib) to last st, sl1 wyib.

Row 4: sl2, (k1, sl1 wyif) to last st, sl1 wyif.

Row 5 & 6: work Row 1 & 2 once more.

Next, work Mosaic Chart 1 page 4; 47 sts.

Mosaic Colorwork

reading and working the Charts

A mosaic pattern is a slip-stitch design using two colors. The colors are worked one at a time, so you'll only be handling one strand every row. You'll be working a RS (knit) and a WS (knit) row with one contrast color. After working these two rows, you'll drop that color, and work a RS and a WS row with the other contrast color. The chart represents this: every horizontal row of squares represents a RS (right to left) and a WS (left to right) row.

The squares that form the vertical bar on the left and right of the Charts represent the color you'll be using for that row. If the square indicates to use CC1, you'll be knitting the CC1 stitches, and slipping the CC2 sts. On the next (WS) row you'll be knitting and slipping the exact same sts.

Note that the squares that form the vertical bars **do not represent stitches**, and **should not be worked** at the beginning or end of the row.

All the sts are slipped purlwise, with the yarn held on the WS. So, on a RS row you'll be slipping the stitches with the yarn in back (wyib) and on the WS rows with the yarn in front (wyif).

Note that the Mosaic colorwork is worked in garter stitch (knit every row) except for the edge stitches (all Charts) and the center stitch (Mosaic Chart 3 and Border Chart). These stitches (indicated by a dot symbol) are worked in Stockinette (knit on the RS, purl on the WS).

Chart 1

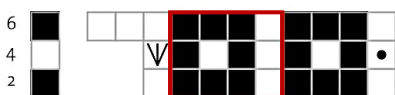
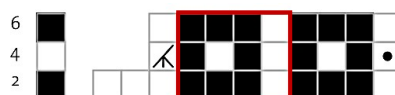


Chart 2



- CC1
- CC2
- RS: knit
WS: purl
- ▽ RS: kfbf
WS: k3
- ⧘ RS: k3tog
WS: k1
- Repeat

Next, work the 6 rows of the Narrow Stripe Sequence.

Break CC1 & CC2.

To complete the increase section of the upper body of the shawl work the following steps.

Step 1: work Row 5 – 12 of the Star Stitch Pattern (increasing); 51 sts.

Next, work row 1 – 12 of the Star Stitch Pattern; 57 sts.

Step 2: work the 6 rows of the Narrow Stripe Sequence.

Step 3: work Row 1 – 4 of the Star Stitch Pattern; 59 sts.

Step 4: work the 6 rows of the Narrow Stripe Sequence.

Step 5: work row 5 – 8 of the Star Stitch Pattern; 61 sts.

Step 6: work the 6 rows of the Narrow Stripe Sequence.

Step 7: work Mosaic Chart 1; 63 sts.

Step 8: work Step 2 – 6 once more; 67 sts.

Step 9: work Row 9 – 12 of the Star Stitch Pattern; 69 sts.

Next, work Row 1 – 12 of the Star Stitch Pattern; 75 sts.

Next, work Row 1 – 4 of the Star Stitch Pattern once more; 77 sts.

Break MC.

Step 10: work the 6 rows of the Narrow Stripe Sequence.

Step 11: work Mosaic Chart 1; 79 sts.

Next row (RS): with CC2, k to last st, M1R, k1; 80 sts.

Next row (WS): k to last st, p1.

Center of the Upper Shawl Body

You have completed the increase section of the upper body of the shawl. The next two rows will form the center of the upper body.

Row 1: with CC1, sl2 (k1, sl1) to end.

Row 2: (sl1, k1) to last 2 sts, sl2.

With the RS facing you, mark these center rows at the LH selvedge with a removable stitch marker.

Upper Shawl Body; decreasing

From here on you are going to work decreases at the LH selvedge of the Upper Shawl Body.

Next row (RS): with CC2, k to last 3 sts, k2tog, k1; 79 sts

Next row (WS): k to last st, p1.

Next, work Mosaic Chart 2; 77 sts.

Next, work Narrow Stripe Sequence.

Break CC1 & CC2, attach MC.

Star Stitch Pattern Sequence; decreasing

Row 1 (RS) - decrease row: k1, (k3pso2s) to last 4 sts, k1, k2tog, k1.

Row 2 (WS): k1, p2, (M1pR, p2) to last st, p1; 76 sts.

Row 3 - decrease row: k2, (k3pso2s) to last 5 sts, k2, k2tog, pass first of the 3 sts over the

2nd and 3rd st, k1.

Row 4: k1, p2, (M1pR, p2) to end; 75 sts.

Row 5 - decrease row: k1, (k3pso2s) to last 5 sts, k2, k2tog, pass first of the 3 sts over the 2nd and 3rd st, k1.

Row 6: k1, (M1pR, p2) to last st, p1; 74 sts.

Row 7 - decrease row: k2, (k3pso2s) to last 3 sts, k2tog, k1.

Row 8: k1, p3, (M1pR, p2) to end; 73 sts.

Row 9 - decrease row: k1, (k3pso2s) to last 3 sts, k2tog, k1.

Row 10: k1, p1, (M1pR, p2) to last st, p1; 72 sts.

Row 11 - decrease row: k2, (k3pso2s) to last 4 sts, k1, k2tog, k1.

Row 12: k1, p4, (M1pR, p2) to end; 71 sts.

Work Row 1 – 8 once more; 67 sts.

Break MC.

To complete the decrease section of the upper body of the shawl work the following steps.

Step 1: work the 6 rows of the Narrow Stripe Sequence.

Step 2: work Row 9 – 12 of the Star Stitch Pattern (decreasing); 65 sts.

Step 3: work the 6 rows of the Narrow Stripe Sequence.

Step 4: work row 1 – 4 of the Star Stitch Pattern (decreasing); 63 sts

Step 5: work the 6 rows of the Narrow Stripe Sequence.

Step 6: work Mosaic Chart 2; 61 sts.

Step 7: work the 6 rows of the Narrow Stripe Sequence.

Step 8: work Row 9 – 12 of the Star Stitch Pattern (decreasing); 59 sts.

Step 9: work the 6 rows of the Narrow Stripe Sequence.

Step 10: work Row 1 – 4 of the Star Stitch Pattern (decreasing); 57 sts.

Step 11: work the 6 rows of Narrow Stripe Sequence.

Step 12: work Row 5 – 12 of the Star Stitch Pattern (decreasing); 53 sts.

Next, work Row 1 – 12 of the Star Stitch Pattern (decreasing); 47 sts.

Step 13: work the 6 rows of the Narrow Stripe Sequence.

Step 14: work Mosaic Chart 2; 45 sts.

Step 15: work the 6 rows of the Narrow Stripe Sequence.

Break CC1 and CC2.

Step 16: work Row 5 – 12 of the Star Stitch Pattern (decreasing); 41 sts.

Next, work Row 1 – 12 of the Star Stitch Pattern (decreasing); five times; 11 sts.

Next, work Row 1 - 10 of the Star Stitch Pattern (decreasing) once more; 6 sts.

Next Row (RS) - *decrease row*: k to last 3 sts, k2tog, k1.

Next Row (WS): k1, p to end; 5 sts.

Work these last 2 rows twice more; 3 sts.

Next row (RS): BO all sts.

LOWER SHAWL BODY

Mosaic Section

With CC2 and RS facing, starting at the first bound of st of the Upper Body of the shawl, PU and k 158 sts along the lower edge of the shawl until m. Rem m, place it on the needle, PU and k 1 st at the center of the shawl, pm. PU and k 158 sts until the first cast on st; 317 sts.

Next row (WS): p1, k to m, slm, p1, slm, k to last st, p1.

Next, work Mosaic Chart 3; 333 sts.

Next row (RS) - *increase row*: with CC2, k1, kfbf, k to m, slm, k1, slm, k to last 2 sts, kfbf, k1; 337 sts.

Next row (WS): p1, k to m, slm, p1, slm, k to last st, p1.

Break CC1 and CC2.

Star Stitch Pattern Section

In Row 1 you will increase sts evenly across the row to compensate for the gauge difference between the Mosaic and the Star Stitch Pattern.

To shape the shawl, increases are worked at the sides of the shawl every second row, and at both sides of the center stitch every fourth row.

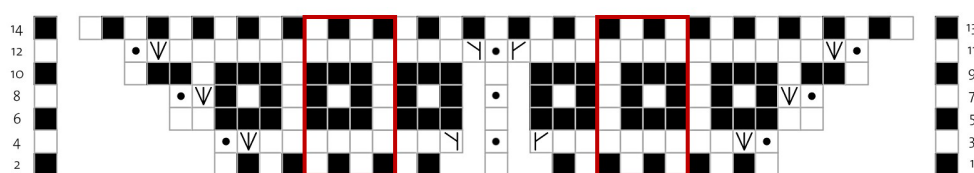
Row 1 (RS) - *increase row*: with MC, k1, kfbf, pass the first increase over the other two sts, *(k3pso2s) four times, k2, M1R, pass first st over 2 sts. Repeat from* until 12 sts bef m, (k3pso2s) four times, M1R, slm, k1, slm, M1L, **(k3pso2s) four times, k2, M1L, pass first st over 2 sts. Repeat from** until 14 last sts, (k3pso2s) four times, kfbf, pass first st over 2 sts, k1.

Row 2 (WS): p1, (p2, M1pR) to 1 st bef m, p1, slm, p1, slm, p1, (M1pR, p2) to last st, p1; 365 sts.

Row 3 - *increase row*: k1, kfbf, pass the first increase over the other two sts, (k3pso2s) to m, slm, k1, slm, (k3pso2s) to last 2 sts, kfbf, pass first st over 2 sts, k1.

Row 4: p1, (p2, M1pR) to m, slm, sl1, slm, (M1pR, p2) to last st, p1; 369 sts.

Chart 3



- CC1
- CC2
- RS: knit
WS: purl
- RS: M1R
WS: k1
- RS: M1L
WS: k1
- RS: kfbf
WS: k3
- Repeat

Row 5 - increase row: k1, kfbf, pass the first increase over the other two sts, (k3pso2s) to 2 sts bef m, k2, M1R, pass first of the 3 sts over the 2nd and 3rd st, slm, k1, slm, M1L, k2, pass first of the 3 sts over the 2nd and 3rd st, (k3pso2s) to last 2 sts, kfbf, pass first st over 2 sts, k1.

Row 6: p1, (p2, M1pR) to m, slm, sl1, slm, (M1pR, p2) to last st, p1; 375 sts.

Row 7 - increase row: k1, kfbf, pass the first increase over the other two sts, (k3pso2s) to 2 sts bef m, k2, slm, k1, slm, k2, (k3pso2s) to last 2 sts, kfbf, pass first st over 2 sts, k1.

Row 8: p1, (p2, M1pR) to 2 sts bef m, p2, slm, sl1, slm, p2, (M1pR, p2) to last st, p1; 379 sts.

Row 9 - increase row: k1, kfbf, pass the first increase over the other two sts, (k3pso2s) to 1 st bef m, k1, M1R, slm, k1, slm, M1L, k1, (k3pso2s) to last 2 sts, kfbf, pass first st over 2 sts, k1.

Row 10: p1, (p2, M1pR) to 2 sts bef m, p2, slm, sl1, slm, p2, (M1pR, p2) to last st, p1; 385 sts.

Row 11 - increase row: k1, kfbf, pass the first increase over the other two sts, (k3pso2s) to 1 st bef m, k1, slm, k1, slm, k1, (k3pso2s) to last 2 sts, kfbf, pass first st over 2 sts, k1.

Row 12: p1, (p2, M1pR) to 1 sts bef m, p1, slm, sl1, slm, p1, (M1pR, p2) to last st, p1; 389 sts.

Break MC.

MOSAIC BORDER

In the first Row you will decrease sts evenly across the row to compensate for the gauge difference between the Star Stitch and the Mosaic Pattern.

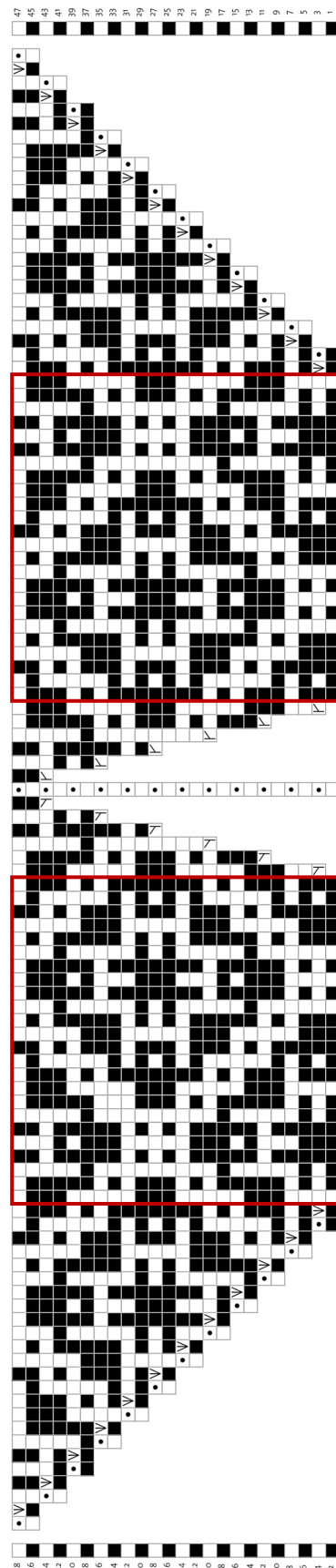
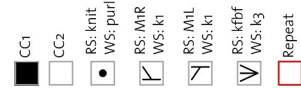
Next row (RS) - decrease row: with CC2, (k2o, k2tog) to 18 sts bef m, k to m, slm, k1, slm, k18, (ssk, k2o) to end; 373 sts

Next row (WS): p1, k to m, slm, sl1, slm, k to last st, p1.

Next, work Mosaic Chart 3; 389 sts.

Next row (RS): with CC2, k to m, slm, k1, slm, k to end.

Next row (WS): p1, k to m, slm, p1, slm, k to last st, p1.



Border Chart

Next, work the Border Chart on page 7;
455 sts.

Next row (RS) - *increase row*: with CC2, k1, kfbf, k to m, M1R, slm, k1, slm, M1L, k to 2 sts bef end, kfbf, k1; 461 sts

Next row (WS): p1, k to m, slm, p1, slm, k to last st, p1.

Next, work Mosaic Chart 3; 477 sts.

Next row (RS): with CC2, k to m, slm, k1, slm, k to end.

Next row (WS): BO all sts kwise.

FINISHING

Weave in all ends. Wet block your shawl, preferably using blocking wires. Stretch the wrap to the shape and measurements given in schematic.

TASSELS (Optional)

For the sample forty-one 4 cm / 1.5" tassels were made as follows.

Step 1: Holding MC double, wrap the yarn ten times around a 4.5 cm / 1.75" piece of cardboard.

Step 2: Thread tapestry needle with approx. 20 cm / 7.75" of MC, thread the needle between the cardboard and the wrapped yarn, and tie the top of the tassel snugly.

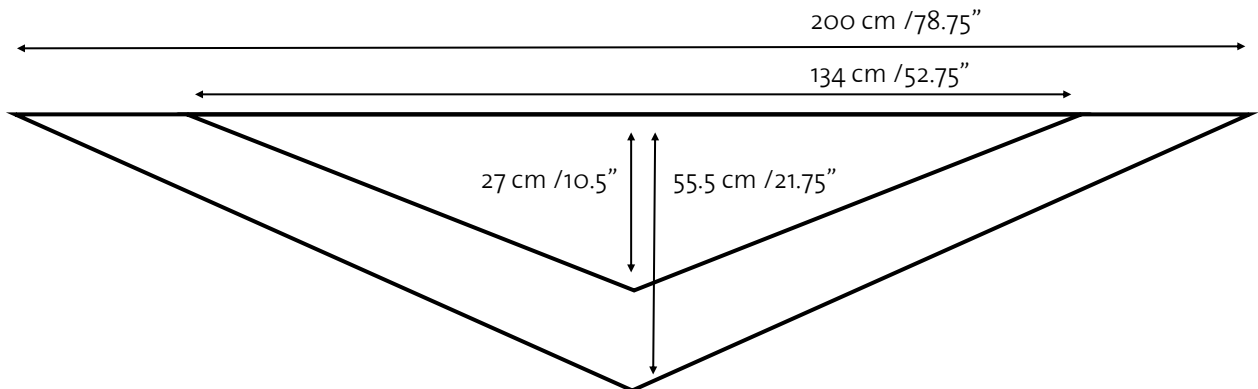
Step 3: Cut the wrapped yarn, and remove it from the cardboard.

Step 4: Holding MC double, and wrap it snugly just below the top of the tassel.

Step 5: Tie a knot, and hide the ends inside the tassel using a tapestry needle.

Step 6: Starting at one of the outer corners attach one tassel for every three Mosaic Chart 3 squares.

SCHEMATIC



ABBREVIATIONS

approx = approximately

bef = before

BO = bind off

CC = contrast color

CO = cast on

dec = decrease

inc(s) = increase(s)

k = knit

k2tog = knit 2 stitches together

k3pso2s = k3, pass first of the 3 knit sts over the 2nd and the 3rd st

kfbf = knit into front, back, front (2 sts increased)

LH = left hand

m = marker

M1L = make 1 left (left leaning increase); insert left needle, from front to back, under strand of yarn which runs between next stitch on left needle and last stitch on right needle; knit this stitch through back loop

M1R = make 1 right (right leaning increase); insert left needle, from back to front, under strand of yarn which runs between next stitch on left needle and last stitch on right needle; knit this stitch through front loop.

M1pR = make 1 p right (right leaning increase); insert left needle, from back to front, under strand of yarn which runs between next stitch on left needle and last stitch on right needle; purl this stitch through front loop.

MC = main color

p = purl

pm = place marker

PU = pick up

RH = right hand

RS = right side

sl = slip

slm = slip marker

ssk = slip, slip, knit

st(s) = stitch(es)

WS = wrong side

wyib = with yarn in back

wyif = with yarn in front