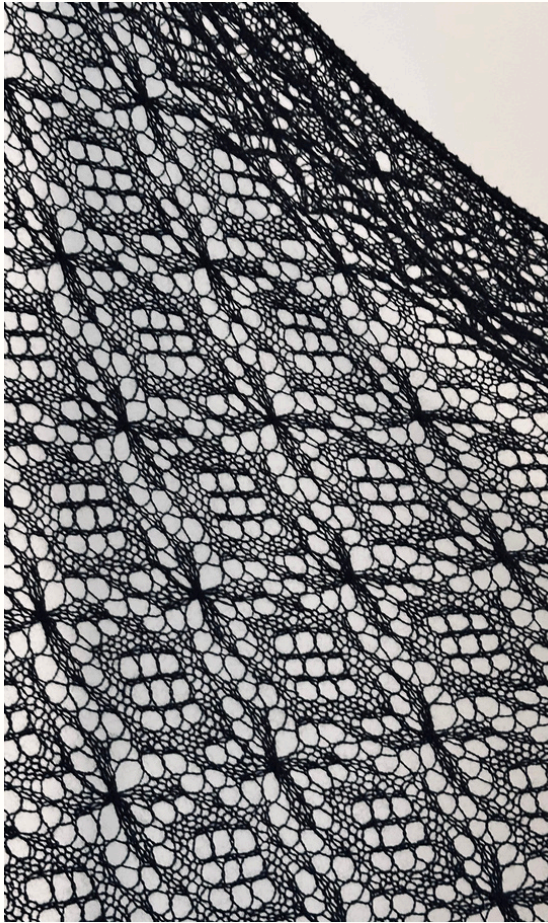


LUCKY CLOVER LACE STOLE



A FREE KNITTING PATTERN
INSPIRED BY CLASSIC HAAPSALU LACE
BY ANN DINH

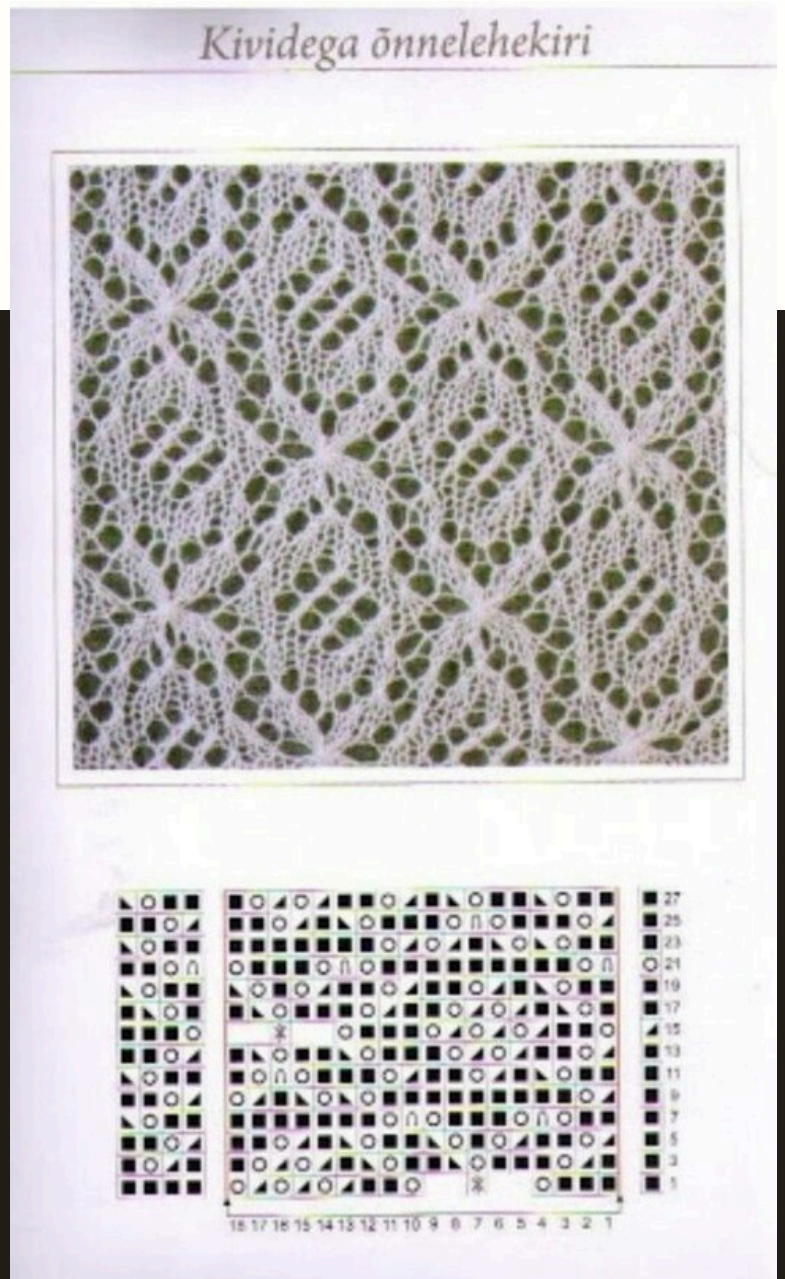


introduction

The Lucky Clover Lace Stole is a tribute to the enduring beauty of traditional lace knitting. With its flowing leaf motifs and gently scalloped edges, this stole wraps the wearer in a whisper of elegance. Whether draped over evening wear or layered with a cozy cardigan, its timeless charm will captivate. This pattern is designed flexibly—allowing knitters to customize the length and width to suit their vision.

inspiration

This design was born from quiet admiration for the Haapsalu lace tradition, where each stitch carries both history and heart. The four-leaf motif used in the body recalls the gentle symmetry of pressed clovers, bringing a sense of luck and grace to every row. The lace edging, adapted from Mone Drager's Lucy Stole, adds a final flourish—elegant and familiar, yet made your own with subtle changes. With gratitude to those who came before, this shawl continues the lineage of shared beauty and community.



mesurament

160 cm x 66 cm (63" x 26")

materials

YARN

Sample shown in: Sesia Extrafine (100% Merino Wool; 1640yds (1500m)/ 100g)

Yarn amount - 70g 1149yds (1050m)

NEEDLE

US 6 (4mm) circular needles or any size fit with your yarn.

NOTIONS

Scrap yarn for Provisional Cast on

Tapestry needle

Stitch markers

Blocking wires and pins

techniques

- Knitting lace with charts and written instructions
- Yarn overs (yo) and various decreases (k2tog, ssk, sk2p, etc.)
- Joining edging to the body as you knit (for the sideways lace border)
- Provisional cast-on (optional, depending on how you plan to begin or extend the body)
- Blocking lace to finished dimensions

If you are new to lace knitting, consider working a small swatch first to get familiar with the stitch patterns and chart reading.

notes

- Exact gauge is not important. Do note that a looser gauge will result in the use of more yardage.
- The body of the stole is fully adjustable in both length and width by repeating the main chart as many times as desired. You will need to calculate the total number of stitches along the edges of your finished body piece in order to attach the lace edging smoothly.
- The lace edging is worked sideways, joining one stitch of the body at the end of each odd-numbered row.
- Charts are worked flat; read RS rows (odd numbers) from right to left, and WS rows (even numbers) from left to right.
- Use blocking wires and pins for best results.
- You're welcome to substitute yarns, but choose something with good stitch definition and enough structure to support open lacework.

abbreviations

k = knit

p = purl

yo = yarn over

2yo = double yarn over. You will work (k1, p1) the next row

k2tog = knit 2 together

ssk = slip, slip, knit

ssk (joining edge) = slip 1 st from the edge and slip 1 st from the body, knit 2 sts together

s2kp = slip 2 as if to k2tog, knit, then pass slipped stitch over

7 gathered into 5 = insert the left needle into

7 sts and work them (k7tog, yo, k7tog, yo, k7tog) all into the same 7 sts

sl1 wyib = slip 1 stitch knitwise with yarn in back

sl1 wyif = slip 1 stitch purlwise with yarn in front

PM = place marker

CO = cast on













RS = right side

WS = wrong side

rep = repeat

st(s) = stitch(es)

symbols

	K - Knit
	RS: P - Purl WS: K - Knit
	yo - Yarn over
	ssk - Slip, slip, knit
	k2tog - Knit 2 together
	s2kp - Slip 2 as if to k2tog, knit, then pass slipped stitch over
	RS: p2tog tbl - Purl 2 together through back loop WS: ssk - Slip, slip, knit
	RS: p2tog - Purl 2 together WS: k2tog - Knit 2 together
	RS: sl wyif - Slip 1 stitch knitwise with yarn in front WS: sl wyib - Slip 1 stitch purlwise with yarn in back
	7 gathered into 5 - Insert the left needle into 7sts and work them (k7tog, yo, k7tog, yo, k7tog) all into the same 7sts
	ssk (joining edging) - Slip, slip, knit - 1 st from the edge and 1 st from the body
	Stitch count

-written instruction-

THE BODY

1. CO **100 sts** using Provisional CO method with scrap yarn. Break the scrap yarn.
2. Join the main yarn and **knit 4 rows**.
3. Begin working the Body chart, the **boxed pattern rep (18 sts) 5 times** across.
4. Work **Row 1-28** of the Body chart **14 times**. You can adjust the size by knitting the Body chart as many times as you wish - if so, you will need to calculate the total stitch again, increase/decrease st to fix with the lace edging chart.
5. **Knit 5 rows**; do not break the yarn after the last row.

Row 1 (RS): Sl1 wyib, k3, [k3, yo, 7 gathered into 5, yo, k2, (k2tog, yo) 3 times] 5 times, k6

Row 2 and other even rows (WS): Sl1 wyif, purl to end of row.

Row 3: Sl1 wyib, k3, [k1, k2tog, yo, k3, yo, ssk, k2, yo, ssk, k1, (k2tog, yo) twice, k1] 5 times, k1 k2tog, yo, k3

Row 5: Sl1 wyib, k3, [k2tog, yo, k2, k2tog, (yo, k1) twice, ssk, k1, yo, ssk, k1, k2tog, yo, k2] 5 times, k2tog, yo, k4

Row 7: Sl1 wyib, k3, [k2, yo, s2kp, yo, k3, yo, s2kp, yo, k7] 5 times, k2, yo, ssk, k2

Row 9: Sl1 wyib, k3, [k2tog, yo, k9, (yo, ssk) twice, k1, k2tog, yo] 5 times, k2tog, yo, k4

Row 11: Sl1 wyib, k3, [k2, yo, ssk, k1, (k2tog, yo, k2) twice, k1, yo, s2kp, yo, k1] 5 times, k2, yo, ssk, k2

Row 13: Sl1 wyib, k3, [k2tog, yo, k2, (k2tog, yo) twice, k3, yo, ssk, k2, yo, ssk, k1] 5 times, k2tog, yo, k4

Row 15: Sl1 wyib, k2, k2tog, [yo, k2, (k2tog, yo) 3 times, k3, yo, 7 gathered into 5] 5 times, yo, k5

Row 17: Sl1 wyib, k3, [k1, yo, ssk, k1, (k2tog, yo) twice, k2, k2tog, yo, k3, yo, ssk, k1] 5 times, k1, yo, ssk, k3

Row 19: Sl1 wyib, k3, [k2, yo, ssk, k1, (k2tog, yo, k2) twice, k2tog, yo, k1, yo, ssk] 5 times, k2, yo, ssk, k2

Row 21: Sl1 wyib, k2, yo, [s2kp, k9, yo, s2kp, yo, k3, yo] 5 times, s2kp, yo, k4

Row 23: Sl1 wyib, k3, [k2, (yo, ssk) twice, k1, (k2tog, yo) twice, k7] 5 times, k2, yo, ssk, k2

Row 25: Sl1 wyib, k3, [k2tog, yo, k3, yo, s2kp, yo, k3, yo, ssk, k1, k2tog, yo, k2] 5 times, k2tog, yo, k4

Row 27: Sl1 wyib, k3, [(k2, yo, ssk) twice, k1, k2tog, yo, k2, (k2tog, yo) twice, k1] 5 times, k2, yo, ssk, k2

THE EDGING

The lace edging I used for this sample stole was adapted from a Lucy's Stole pattern originally designed by Mone Drager. An optional lace edging has also been included in this pattern. Feel free to explore and use the one that best suits your style.

1. With working yarn and RS facing, pick up for edging as follows: pick up **2 sts** at the **first 5 knits rows, 1 st in each slipped edge st (196 sts)** then **2 sts** at the **final 4 knit rows**.
2. Place **100 sts** from Provisional CO onto the needles.
3. Pick up **2 sts** at the **first 4 knits rows, 1 st in each slipped edge st (196 sts)** then **2 sts** at the **final 5 knit rows. Knit 2 sts and PM - 600 sts total**.
4. Using Backward Loop CO, **CO 13 sts - 613 sts total**.
5. *Work Row 1-12 of Edging Chart total **16 times**. Work Row 1-12 of Edging Corner **twice**. Work Row 1-12 of Edging Chart total **32 times** Work Row 1-12 of Edging Corner **twice***; repeat from * one more time. **13 sts remain**.
6. Break the yarn, leave a 50cm (25") tail.
7. Pick up **13 sts** along edging CO. Use **Kitchener Stitch** to graft edging stitches together.

[SAMPLE STOLE LACE EDGING - Adapted chart from Lucy's Stole by Mone Drager]

EDGING CHART

Row 1 (RS): k2, (yo, k2tog) twice, k1, k2tog, yo, k3, **ssk**.

Row 2 (WS): k2, k2tog, yo, k5, yo, ssk, yo, k2.

Row 3: k2, yo, k2tog, yo, k4, k2tog, yo, k3, **ssk**.

Row 4: k2, k2tog, yo, k7, yo, ssk, yo, k2.

Row 5: k2, yo, k2tog, yo, k2, k2tog, 2yo, ssk, k2tog, yo, k3, **ssk**.

Row 6: k2, k2tog, yo, k4, p1, k4, yo, ssk, yo, k2.

Row 7: k1, (ssk, yo) twice, k1, k2tog, 2yo, ssk, k2, k2tog, yo, k3, **ssk**.

Row 8: k2, k2tog, yo, k6, p1, (k2tog, yo) twice, k2tog, k1.

Row 9: k1, (ssk, yo) twice, ssk, k2tog, 2yo, ssk, k2tog, yo, k3, **ssk**.

Row 10: k2, k2tog, yo, k4, p1, (k2tog, yo) twice, k2tog, k1.

Row 11: k1, (ssk, yo) twice, ssk, k2, k2tog, yo, k3, **ssk**.

Row 12: k2, k2tog, yo, k3, (k2tog, yo) twice, k2tog, k1.

EDGING CORNER CHART

Row 1 (RS): k2, (yo, k2tog) twice, k1, turn.

Row 2 (WS): Sl1 wyif, k2, yo, ssk, yo, k2.

Row 3: k2, yo, k2tog, yo, k4, k2tog, yo, k3, **ssk**.

Row 4: k2, k2tog, yo, k7, yo, ssk, yo, k2.

Row 5: k2, yo, k2tog, yo, k2, k2tog, 2yo, ssk, turn.

Row 6: Sl1 wyif, k1, P1, k4, yo, ssk, yo, k2.

Row 7: k1, (ssk, yo) twice, k1, k2tog, 2yo, ssk, k2, k2tog, yo, k3, **ssk**.

Row 8: k2, k2tog, yo, k6, P1, (k2tog, yo) twice, k2tog, k1.

Row 9: k1, (ssk, yo) twice, ssk, k2tog, 2yo, ssk, turn.

Row 10: Sl1 wyif, k1, p1, (k2tog, yo) twice, k2tog, k1.

Row 11: k7, (ssk, yo) twice, ssk, k2, k2tog, yo, k3, **ssk**.

Row 12: k2, k2tog, yo, k3, (k2tog, yo) twice, k2tog, k1



[ADDITIONAL LACE EDGING] // * OPTION 1 // CO 14 sts



EDGING CHART

Row 1 (RS): (k1, yo) twice, ssk, yo, ssk, k2, k2tog, 2yo, ssk, k1, **ssk**.

Row 2 and other even rows (WS): Knit (k1, p1) into 2yo, knit all other stitches.

Row 3: k1, yo, k3, (yo, ssk) twice, k1, k2tog, 2yo, ssk, k1, **ssk**.

Row 5: k1, yo, k5, (yo, ssk) twice, k2tog, 2yo, ssk, k1, **ssk**.

Row 7: ssk, yo, ssk, k1, (k2tog, yo) twice, k2, k2tog, 2yo, ssk, k1, **ssk**.

Row 9: ssk, yo, s2kp, yo, k2tog, yo, k3, k2tog, 2yo, ssk, k1, **ssk**.

Row 11: ssk, k1, k2tog, yo, k4, k2tog, 2yo, ssk, k1, **ssk**.

EDGING CORNER CHART

Row 1 (RS): (k1, yo) twice, ssk, yo, ssk, k2, turn

Row 2, 6, 10 (WS): Sl1 wyif, k to end of row.

Row 3: k1, yo, k3, (yo, ssk) twice, k1, k2tog, 2yo, ssk, k1, **ssk**.

Row 4, 8, 12: Knit (k1, p1) into 2yo, knit all other stitches.

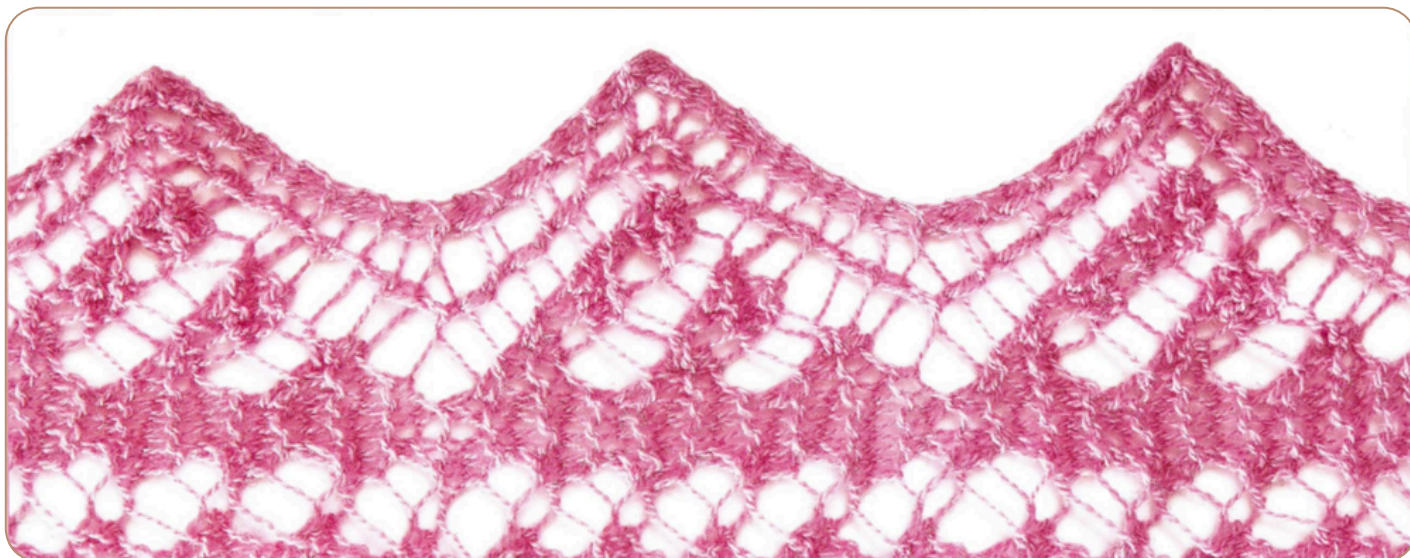
Row 5: k1, yo, k5, (yo, ssk) twice, turn.

Row 7: ssk, yo, ssk, k1, (k2tog, yo) twice, k2, k2tog, 2yo, ssk, k1, **ssk**.

Row 9: ssk, yo, s2kp, yo, k2tog, yo, k3, turn.

Row 11: ssk, k1, k2tog, yo, k4, k2tog, 2yo, ssk, k1, **ssk**.

[ADDITIONAL LACE EDGING] // * OPTION 2 // CO 12 sts



EDGING CHART

Row 1 (RS): k2, yo, k2tog, yo, k2, k2tog, yo, k3, **ssk**.

Row 2 (WS): k2, ssk, yo, k5, yo, ssk, yo, k2.

Row 3: k2, yo, k2tog, yo, k7, yo, ssk, **ssk**.

Row 4: k3, yo, k2tog, k6, yo, ssk, yo, k2.

Row 5: k2, yo, k2tog, yo, k1, yo, ssk, k3, k2tog, yo, k3, **ssk**.

Row 6: k2, ssk, yo, k4, k2tog, yo, k3, yo, ssk, yo, k2.

Row 7: k2, yo, k2tog, yo, k5, yo, ssk, k4, yo, ssk, **ssk**.

Row 8: k3, yo, k2tog, k4, yo, ssk, k1, k2tog, yo, k1, yo, ssk, yo, k2.

Row 9: k2, yo, k2tog, yo, k3, yo, s2kp, yo, k4, k2tog, yo, k3, **ssk**.

Row 10: k2, ssk, yo, k6, k2tog, yo, k5, yo, ssk, yo, k2.

Row 11: k2, yo, k2tog, yo, ssk, k1, k2tog, yo, k1, yo, ssk, k6, yo, ssk, **ssk**.

Row 12: k3, yo, k2tog, k3, k2tog, yo, k3, yo, s2kp, (yo, k2tog) twice, k1.

Row 13: k1, (ssk, yo) twice, k5, yo, ssk, k1, k2tog, yo, k3, **ssk**.

Row 14: k2, ssk, yo, k5, yo, ssk, k1, (k2tog, yo) twice, k2tog, k1.

Row 15: k1, (ssk, yo) twice, s2kp, yo, k7, yo, ssk, **ssk**.

Row 16: k3, yo, k2tog, k5, (k2tog, yo) twice, k2tog, k1.

Row 17: k1, (ssk, yo) twice, ssk, k3, k2tog, yo, k3, **ssk**.

Row 18: k2, ssk, yo, k4, (k2tog, yo) twice, k2tog, k1.

Row 19: k1, (ssk, yo) twice, ssk, k4, yo, ssk, **ssk**.

Row 20: k3, yo, k2tog, k1, (k2tog, yo) twice, k2tog, k1.

EDGING CORNER CHART

Row 1 (RS): k2, yo, k2tog, yo, k2, turn.

Row 2 (WS): Sl1 wyif, k2, yo, ssk, yo, k2.

Row 3: k2, yo, k2tog, yo, k7, yo, ssk, **ssk**.

Row 4: k3, yo, k2tog, k6, yo, ssk, yo, k2.

Row 5: k2, yo, k2tog, yo, k1, yo, ssk, k3, turn,

Row 6: Sl1 wyif, k1, k2tog, yo, k3, yo, ssk, yo, k2.

Row 7: k2, yo, k2tog, yo, k5, yo, ssk, k4, yo, ssk, **ssk**.

Row 8: k3, yo, k2tog, k4, yo, ssk, k1, k2tog, yo, k1, yo, ssk, yo, k2.

Row 9: k2, yo, k2tog, yo, k3, yo, s2kp, yo, k4, turn.

Row 10: Sl1 wyif, k3, k2tog, yo, k5, yo, ssk, yo, k2.

Row 11: k2, yo, k2tog, yo, ssk, k1, k2tog, yo, k1, yo, ssk, k6, yo, ssk, **ssk**.

Row 12: k3, yo, k2tog, k3, k2tog, yo, k3, yo, s2kp, (yo, k2tog) twice, k1.

Row 13: k1, (ssk, yo) twice, k5, yo, ssk, k1, turn,

Row 14: Sl1 wyif, k2, yo, ssk, k1, (k2tog, yo) twice, k2tog, k1.

Row 15: k1, (ssk, yo) twice, s2kp, yo, k7, yo, ssk, **ssk**.

Row 16: k3, yo, k2tog, k5, (k2tog, yo) twice, k2tog, k1.

Row 17: k1, (ssk, yo) twice, ssk, k3, turn.

Row 18: Sl1 wyif, k1, (k2tog, yo) twice, k2tog, k1.

Row 19: k1, (ssk, yo) twice, ssk, k4, yo, ssk, **ssk**.

Row 20: k3, yo, k2tog, k1, (k2tog, yo) twice, k2tog, k1.

FINISHING

Weave in yarn ends and trim after blocking.

BLOCKING

Soak stole in water - adding soap appropriate for fiber if desired. Rinse and wrap in towel to blot out water. Lay flat and smooth into shape.

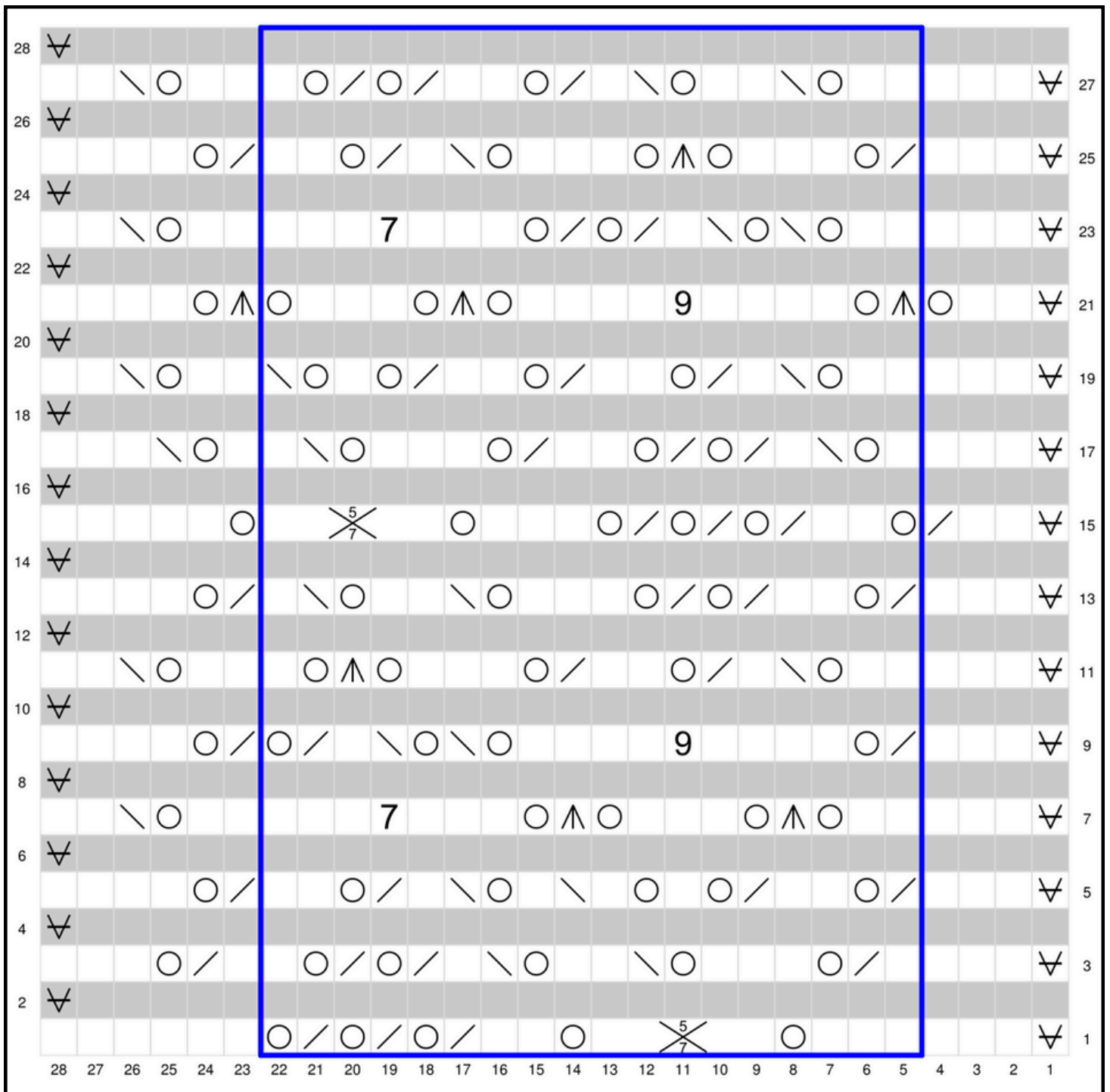
Once dry, trim the yarn ends. Your Lucky Four-leaf Clover Stole is now ready to be worn, gifted, or cherished as a keepsake of quiet creativity.

-chart-

NOTES

1. See written instruction for cast on and lace edging.
2. Read charts from bottom to top; RS rows (odd numbers) from right to left, and WS rows (even numbers) from left to right.

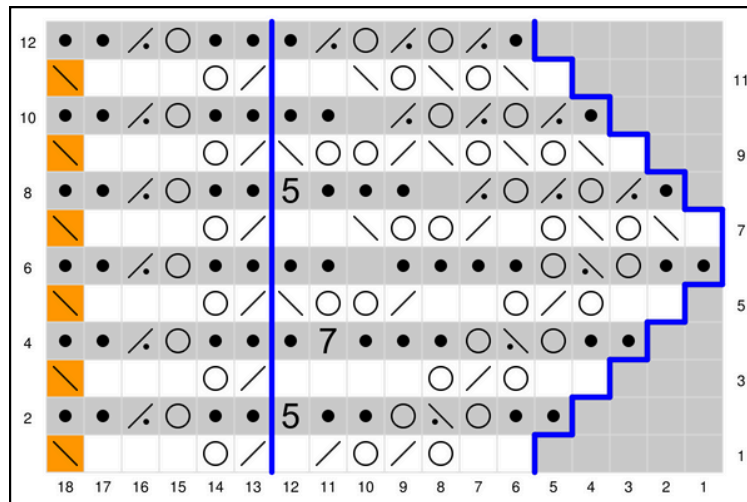
THE BODY CHART



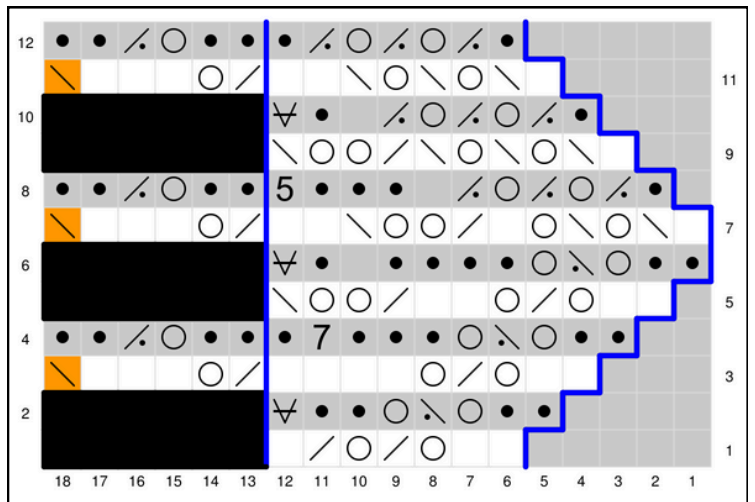
THE EDGING CHART

[SAMPLE STOLE LACE EDGING - Adapted chart from Lucy's Stole by Mone Drager]

EDGING

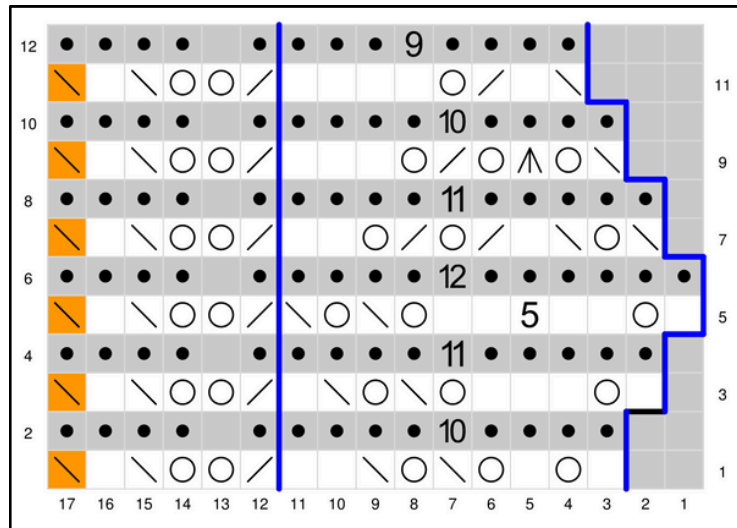


EDGNG CORNER

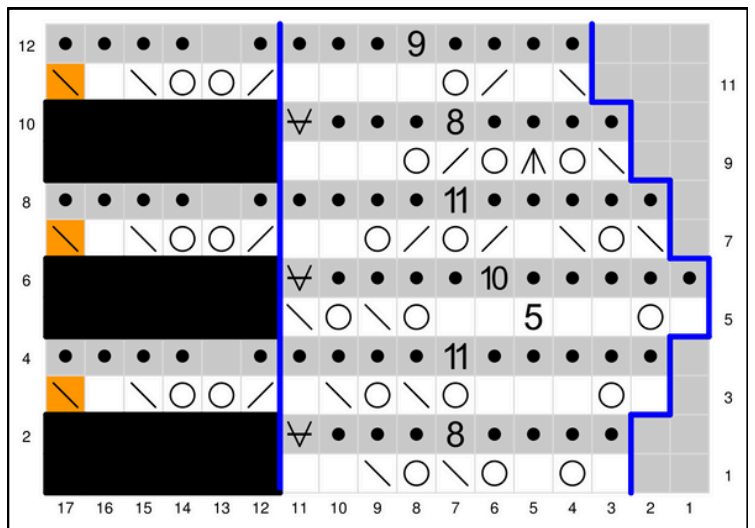


[ADDITIONAL LACE EDGING] // * OPTION 1 // CO 14 sts

EDGING

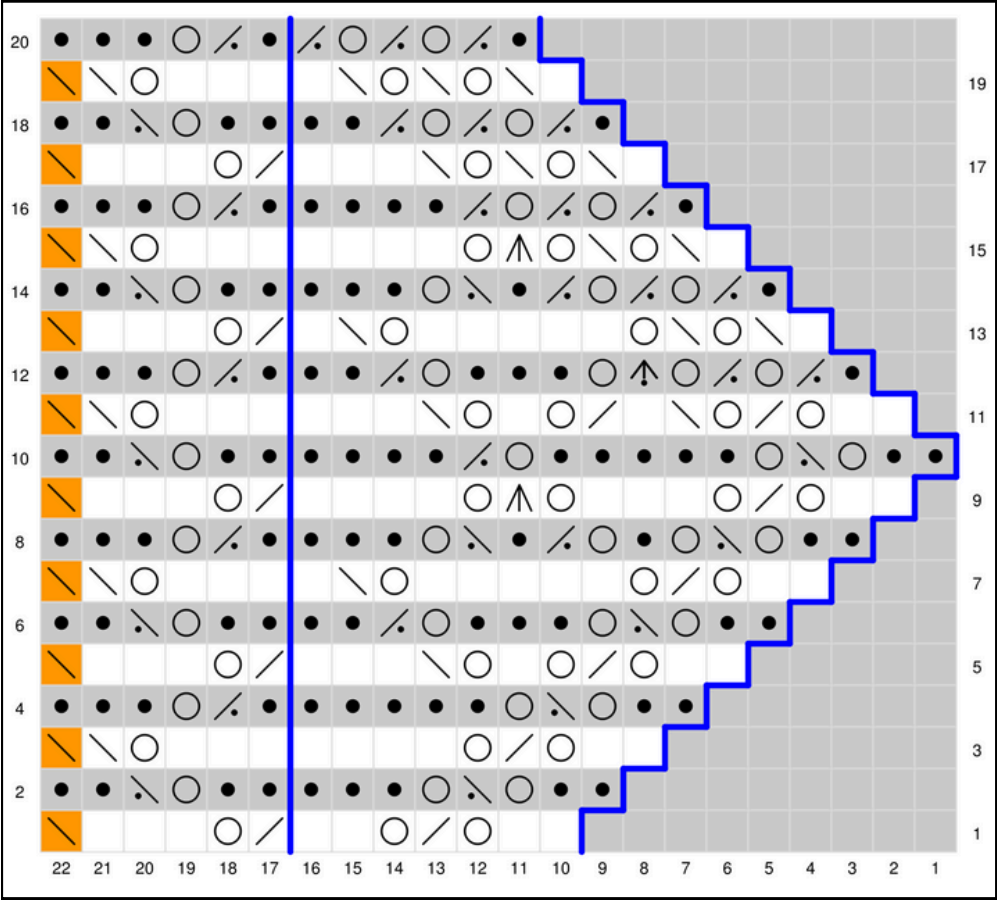


EDGNG CORNER



[ADDITIONAL LACE EDGING] // * OPTION 2 // CO 12 sts

EDGING



EDGNG CORNER

