

Knitting Pattern

# Kylie Pullover

Difficulty: Intermediate

Designed by Irene Lin



2024, Irene Lin

All rights reserved

The pattern is for personal use only

Reselling and commercial use are not allowed.

## Construction:

The Kylie Pullover is knitted by starting at the back from the top down to the base of the armholes. Then, both fronts are picked up and knitted separately, working from the top down to the edge of the front neck. After joining both pieces, the front is worked to the armhole, and then the front and back are joined and knitted in the round down to the hem. Pick up and knit for the sleeves. Pattern Overview: [https://youtu.be/V2-4Y0NW77U?si=Hc0Q0INAxKHq2\\_xh](https://youtu.be/V2-4Y0NW77U?si=Hc0Q0INAxKHq2_xh)

## Gauge / With 4 mm (US 6) needle :

20 sts x 24rows = 10 x 10 cm / 4 x 4" in stockinette stitch after blocking.

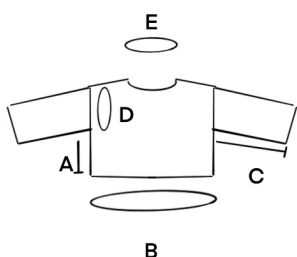
20 sts x 24rows = 10 x 10 cm / 4 x 4" in pattern stitch after blocking.

Recommended ease : 10~40 cm / 4~15.75"

To pick your size, I recommend making a swatch with your yarn, checking your gauge and adjusting needle size accordingly, measure around your full bust, then add your desired ease. Pick the closest size from the finished bust circumference.

## Size:

1 (2, 3, 4, 5) Sample is shown in size 1 on a model who is 163 cm (5'4") tall, and with 39 cm/ 15.25" positive ease.



## Finished measurements:

	A	B	C	D	E
Size	Body length from underarm	Body circumference	Sleeve length from underarm	Upper arm circumference	Neckline circumference
1	20cm/7.75"	122cm/48"	37cm/14.5"	43cm/17"	59cm/23.25"
2	20cm/7.75"	131cm/51.5"	37cm/14.5"	43cm/17"	59cm/23.25"
3	20cm/7.75"	145cm/57"	37cm/14.5"	50cm/19.75"	60cm/23.75"
4	20cm/7.75"	157cm/61.75"	37cm/14.5"	56cm/22"	61cm/24"
5	20cm/7.75"	171cm/67.5"	37cm/14.5"	63cm/24.75"	61cm/24"

The sleeve length from the underarm for the short-sleeve version is 14 cm/5.5".

**Yarn:**

Sandnes Garn Line, 53% cotton, 33% Rayon, 14% Linen, 50g=110m/120yds.

Sample photo shown in Size 1 with Color 2331

8 (9, 10, 11, 12) Balls. Approx. 880 (990, 1100, 1210, 1320) m / 960 (1080, 1200, 1320, 1440) yds. For the short-sleeved version, you can reduce 2 balls of yarn, about 220 m/240yds.

(The yarn amount is for the cropped version, you may need more yardage when extending the length of body or sleeves)

**Needles:**

4 mm (US 6) for the body and sleeves. 3.5 mm (US 4) for the neckline, hem and cuffs. (Use circular needles ranging from 60 to 120 cm according to the requirements of each section; DPNs or preferred needles (Magic Loop) for small circumference knitting)

**Other Materials:**

Stitch markers, Stitch holder cord or waste yarn.

**Abbreviations:**

approx.	Approximately
BO	Bind off
BOR	Begin of the round
CO	Cast on
DS	Double stitch (Refer to German Short-rows techniques below)
k	Knit
k2tog	Knit 2 stitches together
M	Marker
M1L	Make one left. With the left hand needle lift loop between stitches from front, and knit through the back loop. ( Increase )
M1pL	Make one purl stitch left. With the left hand needle lift loop between stitches from front, and purl through the back loop. ( Increase )
M1R	Make one right. With the left hand needle lift loop between stitches from back, and knit through the front loop. ( Increase )
M1pR	Make one purl stitch right. With the left hand needle lift loop between stitches from back, purl through the front loop. ( Increase )
p	Purl
PM	Place marker
RM	Remove marker
rep	Repeat

rnd(s)	Round(s)
RS	Right side
st(s)	Stitch(es)
ssk	Slip 1 knitwise, slip 1 knitwise, return these 2 stitches to left hand needle, then knit them together through the back loop.
SM	Slip marker
TS	Total stitches
WS	Wrong side
yo	Yarn over
3/3 LC	Left Crossed: Slip 3 stitches to cable needle and hold to front, k3 and k3 from cable needle.
[ ]	repeat stitches within brackets

**Backwards loop cast-on method:**

<https://youtu.be/kNMCDTINaRQ?si=76kCHL2Bypd85dwd>

**Pick up and knit stitches from the CO edge:**

<https://youtu.be/l1pf77oM6Pc?si=xkjr16-ORecVE1xu>

**Tubular Bind-Off for 1x1 rib :**

<https://youtu.be/XDNOgutIRcc?si=PbwKZQBos1vswFkk>

**German Short-Rows techniques:**

- 1, (RS): Knit to the instructed stitch of the pattern, turn work to WS.
- 2, (WS): With yarn in front, slip the first stitch purlwise, bring yarn over the needle towards the back and pull tight, creating two loops out of the same stitch, so that double stitch (DS) has been made. Purl to the instructed stitch of the pattern, turn work to RS.
- 3, (RS): With yarn in front, slip the first stitch purlwise, bring yarn over the needle towards the back and pull tight, create a double stitch (DS) as before, knit the next stitch as usual.
- 4, When working over double stitch (DS), treat them as a single stitch, knit both loops together on a RS row (kDS), or purl both loops together on a WS row (pDS).

Video support: <https://youtu.be/d9EvIZxhL-8?si=RKWwuKm0j19fdzSH>

**Note:** Charts are provided on page 15 for your reference.

## Instructions

### Back

With 4 mm (US 6) needle, long tail cast on 111 (123, 137, 149, 163) sts.

Next Row (WS): p1, [ p2, k1 ] 2 (4, 2, 4, 2) times, **PM**, p6, [ k1, p2, k1, p2, k1, p6 ] rep to last 7 (13, 7, 13, 7) sts, **PM**, [ k1, p2 ] 2 (4, 2, 4, 2) times, p1.

Note: Please refer to Chart A for the following Rows 1~8.

Row 1 (RS): k1, [ k2, p1, yo, ssk, p1 ] rep to M, **SM**, k6, [ p1, yo, ssk, p1, yo, ssk, p1, k6 ] rep to M, **SM**, [ p1, yo, ssk, p1, k2 ] rep to last 1 st, k1.

Row 2 (WS): p1, [ p2, k1 ] rep to M, **SM**, p6, [ k1, p2, k1, p2, k1, p6 ] rep to M, **SM**, [ k1, p2 ] rep to last 1 st, p1.

Row 3 (RS): k1, [ k2, p1, k2tog, yo, p1 ] rep to M, **SM**, k6, [ p1, k2tog, yo, p1, k2tog, yo, p1, k6 ] rep to M, **SM**, [ p1, k2tog, yo, p1, k2 ] rep to last 1 st, k1.

Row 4 (WS): Same as Row 2.

Row 5 (RS): Same as Row 1.

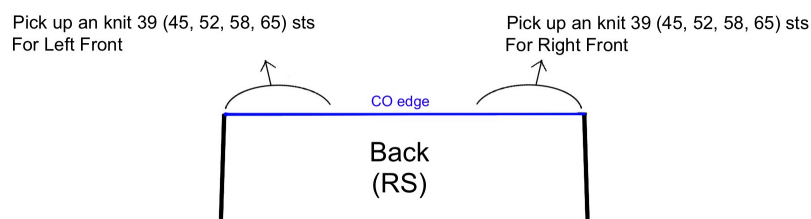
Row 6 (WS): Same as Row 2.

Row 7 (RS): k1, [ k2, p1, k2tog, yo, p1 ] rep to M, **SM**, 3/3 LC, [ p1, k2tog, yo, p1, k2tog, yo, p1, 3/3 LC ] rep to M, **SM**, [ p1, k2tog, yo, p1, k2 ] rep to last 1 st, k1.

Row 8 (WS): Same as Row 2.

After completing the Row 8 (WS), Rep Rows 1~8, 4 (4, 5, 6, 7) more times, then rep Rows 1~6 once, until you have completed Row 46 (46, 54, 62, 70).

Cut the working yarn, leave the sts on hold, then proceed to the Left Front.



### Left Front

With 4 mm (US 6) needles and right side facing, as shown in the schematic above, pick up and knit 39 (45, 52, 58, 65) sts from the left side of the CO edge of the Back piece.

Next Row (WS): p1, [ p2, k1 ] 2 (4, 2, 4, 2) times, [ p6, k1, p2, k1, p2, k1 ] rep to last 6 sts, p6.

## Section 1: Short Rows (Shoulder Shaping)

- Row 1 (RS): k1, ssk, k3, p1, [ yo, ssk, p1 ] 2 times, turn.
- Row 2 (WS): DS, [ p2, k1 ] 2 times, p5.
- Row 3 (RS): k1, ssk, k2, [ p1, k2tog, yo ] 2 times, pDS, k6, p1, turn.
- Row 4 (WS): DS, p6, k1, [ p2, k1 ] 2 times, p4.
- Row 5 (RS): k1, ssk, k1, p1, [ yo, ssk, p1 ] 2 times, k6, pDS, [ yo, ssk, p1 ] 2 times, turn.
- Row 6 (WS): DS, [ p2, k1 ] 2 times, p6, k1, [ p2, k1 ] 2 times, p3.
- Row 7 (RS): **Sizes 1, 2, 4, 5:** k3, [ p1, k2tog, yo ] 2 times, p1, k6, [ p1, k2tog, yo ] 2 times, pDS, k6, p1, turn.  
**Size 3:** k3, [ p1, k2tog, yo ] 2 times, p1, 3/3 LC, [ p1, k2tog, yo ] 2 times, pDS, k6, p1, turn.
- Row 8 (WS): DS, [ p6, k1, p2, k1, p2, k1 ] 2 times, p3.
- Row 9 (RS): **Size 1:** k3, [ p1, yo, ssk, p1, yo, ssk, p1, k6 ] 2 times, pDS, yo, ssk, p1, k3.  
**Size 2:** k3, [ p1, yo, ssk, p1, yo, ssk, p1, k6 ] 2 times, pDS, yo, ssk, p1, k2, p1, turn.  
**Sizes 3, 4, 5:** k3, [ p1, yo, ssk, p1, yo, ssk, p1, k6 ] 2 times, pDS, [ yo, ssk, p1 ] 2 times, turn.
- Row 10 (WS): **Size 1:** p3, k1, p2, k1, [ p6, k1, p2, k1, p2, k1 ] 2 times, p3.  
**Sizes 2, 3, 4, 5:** DS, [ p2, k1 ] 2 times, [ p6, k1, p2, k1, p2, k1 ] 2 times, p3.
- Row 11 (RS): **Size 1:** k3, [ p1, k2tog, yo, p1, k2tog, yo, p1, 3/3 LC ] 2 times, p1, k2tog, yo, p1, k3.  
**Size 2:** k3, [ p1, k2tog, yo, p1, k2tog, yo, p1, 3/3 LC ] 2 times, p1, k2tog, yo, p1, k2, pDS, k2tog, yo, p1, k3.  
**Size 3:** k3, [ p1, k2tog, yo, p1, k2tog, yo, p1, k6 ] 2 times, [ p1, k2tog, yo ] 2 times, pDS, k6, p1, turn.  
**Sizes 4, 5:** k3, [ p1, k2tog, yo, p1, k2tog, yo, p1, 3/3 LC ] 2 times, [ p1, k2tog, yo ] 2 times, pDS, k6, p1, turn.
- Row 12 (WS): **Size 1:** p3, k1, p2, k1, PM, [ p6, k1, p2, k1, p2, k1 ] 2 times, p3. Then proceed to **Section 2**.  
**Size 2:** p3, k1, [ p2, k1 ] 3 times, PM, [ p6, k1, p2, k1, p2, k1 ] 2 times, p3. Then proceed to **Section 2**.  
**Sizes 3, 4, 5:** DS, [ p6, k1, p2, k1, p2, k1 ] 3 times, p3.
- Row 13 (RS): **Size 3:** k3, [ p1, yo, ssk, p1, yo, ssk, p1, k6 ] 3 times, pDS, yo, ssk, p1, k3.  
**Size 4:** k3, [ p1, yo, ssk, p1, yo, ssk, p1, k6 ] 3 times, pDS, yo, ssk, p1, k2, p1, turn.

**Size 5:** k3, [ p1, yo, ssk, p1, yo, ssk, p1, k6 ] 3 times, pDS, [ yo, ssk, p1 ] 2 times, turn.

Row 14 (WS): **Size 3:** p3, k1, p2, k1, [ p6, k1, p2, k1, p2, k1 ] 3 times, p3.

**Sizes 4, 5:** DS, [ p2, k1 ] 2 times, [ p6, k1, p2, k1, p2, k1 ] 3 times, p3.

Row 15 (RS): **Size 3:** k3, [ p1, k2tog, yo, p1, k2tog, yo, p1, 3/3 LC ] 3 times, p1, k2tog, yo, p1, k3.

**Size 4:** k3, [ p1, k2tog, yo, p1, k2tog, yo, p1, k6 ] 3 times, p1, k2tog, yo, p1, k2, pDS, k2tog, yo, p1, k3.

**Size 5:** k3, [ p1, k2tog, yo, p1, k2tog, yo, p1, k6 ] 3 times, [ p1, k2tog, yo ] 2 times, pDS, k6, p1, turn.

Row 16 (WS): **Size 3:** p3, k1, p2, k1, **PM**, [ p6, k1, p2, k1, p2, k1 ] 3 times, p3. Then proceed to **Section 2**.

**Size 4:** p3, k1, [ p2, k1 ] 3 times, [ p6, k1, p2, k1, p2, k1 ] 3 times, p3.

**Size 5:** DS, [ p6, k1, p2, k1, p2, k1 ] 4 times, p3.

Row 17 (RS): **Size 4:** k3, [ p1, yo, ssk, p1, yo, ssk, p1, k6 ] 3 times, [ p1, yo, ssk, p1, k2 ] 2 times, k1.

**Size 5:** k3, [ p1, yo, ssk, p1, yo, ssk, p1, k6 ] 4 times, pDS, yo, ssk, p1, k3.

Row 18 (WS): **Size 4:** p3, k1, [ p2, k1 ] 3 times, [ p6, k1, p2, k1, p2, k1 ] 3 times, p3.

**Size 5:** p1, [ p2, k1 ] 2 times, [ p6, k1, p2, k1, p2, k1 ] 4 times, p3.

Row 19 (RS): **Size 4:** k3, [ p1, k2tog, yo, p1, k2tog, yo, p1, 3/3 LC ] 3 times, [ p1, k2tog, yo, p1, k2 ] 2 times, k1.

**Size 5:** k3, [ p1, k2tog, yo, p1, k2tog, yo, p1, 3/3 LC ] 4 times, p1, k2tog, yo, p1, k3.

Row 20 (WS): **Size 4:** p3, k1, [ p2, k1 ] 3 times, **PM**, [ p6, k1, p2, k1, p2, k1 ] 3 times, p3.

**Size 5:** p3, k1, p2, k1, **PM**, [ p6, k1, p2, k1, p2, k1 ] 4 times, p3.

## **Section 2:** (Neckline Shaping)

Row 1 (RS): k3, [ p1, yo, ssk, p1, yo, ssk, p1, k6 ] rep to M, **SM**, [ p1, yo, ssk, p1, k2 ] rep to last 1 st, k1. TS: 36 (42, 49, 55, 62)

Row 2 (WS): p1, [ p2, k1 ] rep to M, **SM**, [ p6, k1, p2, k1, p2, k1 ] rep to last 3 sts, p3.

Row 3 (RS): k3, [ p1, k2tog, yo, p1, k2tog, yo, p1, k6 ] rep to M, **SM**, [ p1, k2tog, yo, p1, k2 ] rep to last 1 st, k1.

Row 4 (WS): Same as Row 2.

Row 5 (RS): Same as Row 1.

Row 6 (WS): Same as Row 2.

Row 7 (RS): k3, [ p1, k2tog, yo, p1, k2tog, yo, p1, 3/3 LC ] rep to M, **SM**, [ p1, k2tog, yo, p1, k2 ] rep to last 1 st, k1.

Row 8 (WS): Same as Row 2.

Row 9 (RS): k2, M1L, k1, [ p1, yo, ssk, p1, yo, ssk, p1, k6 ] rep to M, **SM**, [ p1, yo, ssk, p1, k2 ] rep to last 1 st, k1. TS: 37 (43, 50, 56, 63)

Row 10 (WS): p1, [ p2, k1 ] rep to M, **SM**, [ p6, k1, p2, k1, p2, k1 ] rep to last 4 sts, p4.

Row 11 (RS): k2, M1L, k2, [ p1, k2tog, yo, p1, k2tog, yo, p1, k6 ] rep to M, **SM**, [ p1, k2tog, yo, p1, k2 ] rep to last 1 st, k1. TS: 38 (44, 51, 57, 64)

Row 12 (WS): p1, [ p2, k1 ] rep to M, **SM**, [ p6, k1, p2, k1, p2, k1 ] rep to last 5 sts, p5.

Row 13 (RS): k2, M1L, k3, [ p1, yo, ssk, p1, yo, ssk, p1, k6 ] rep to M, **SM**, [ p1, yo, ssk, p1, k2 ] rep to last 1 st, k1. TS: 39 (45, 52, 58, 65)

Row 14 (WS): p1, [ p2, k1 ] rep to M, **SM**, [ p6, k1, p2, k1, p2, k1 ] rep to last 6 sts, p6.

Row 15 (RS): k2, M1L, k4, [ p1, k2tog, yo, p1, k2tog, yo, p1, 3/3 LC ] rep to M, **SM**, [ p1, k2tog, yo, p1, k2 ] rep to last 1 st, k1. TS: 40 (46, 53, 59, 66)

Row 16 (WS): p1, [ p2, k1 ] rep to M, **SM**, [ p6, k1, p2, k1, p2, k1 ] rep to last 7 sts, p7.

Row 17 (RS): k2, M1L, k5, [ p1, yo, ssk, p1, yo, ssk, p1, k6 ] rep to M, **SM**, [ p1, yo, ssk, p1, k2 ] rep to last 1 st, k1. TS: 41 (47, 54, 60, 67)

Row 18 (WS): p1, [ p2, k1 ] rep to M, **SM**, [ p6, k1, p2, k1, p2, k1 ] rep to last 8 sts, p8.

Row 19 (RS): k2, M1L, k6, [ p1, k2tog, yo, p1, k2tog, yo, p1, k6 ] rep to M, **SM**, [ p1, k2tog, yo, p1, k2 ] rep to last 1 st, k1. TS: 42 (48, 55, 61, 68)

Row 20 (WS): p1, [ p2, k1 ] rep to M, **SM**, [ p6, k1, p2, k1, p2, k1 ] rep to last 9 sts, p6, k1, p2.

Row 21 (RS): k2, M1L, p1, k6, [ p1, yo, ssk, p1, yo, ssk, p1, k6 ] rep to M, **SM**, [ p1, yo, ssk, p1, k2 ] rep to last 1 st, k1. TS: 43 (49, 56, 62, 69)

Row 22 (WS): p1, [ p2, k1 ] rep to M, **SM**, [ p6, k1, p2, k1, p2, k1 ] rep to last 10 sts, p6, k1, p1, M1pL, p2. TS: 44 (50, 57, 63, 70)

Row 23 (RS): k2, M1L, k2, p1, 3/3 LC, [ p1, k2tog, yo, p1, k2tog, yo, p1, 3/3 LC ] rep to M, **SM**, [ p1, k2tog, yo, p1, k2 ] rep to last 1 st, k1. TS: 45 (51, 58, 64, 71)

Row 24 (WS): p1, [ p2, k1 ] rep to M, **SM**, [ p6, k1, p2, k1, p2, k1 ] rep to last 12 sts, p6, k1, p2, k1, M1pL, p2. TS: 46 (52, 59, 65, 72)

Cut the working yarn and leave the sts on hold, then proceed to do the Right Front.

## Right Front

With 4 mm (US 6) needles and right side facing, as shown in the schematic on page 5, pick up and knit 39 (45, 52, 58, 65) sts from the Right side of the CO edge of the Back piece.

Next Row (WS): p6, [ k1, p2, k1, p2, k1, p6 ] rep to last 7 (13, 7, 13, 7) sts, [ k1, p2 ] rep to last 1 st, p1.



## Section 1: Short Rows (Shoulder Shaping)

- Row 1 (RS): k1, [ k2, p1, yo, ssk, p1 ] 1 (2, 1, 2, 1) time(s), [ k6, p1, yo, ssk, p1, yo, ssk, p1 ] rep to last 6 sts, k3, k2tog, k1.
- Row 2 (WS): p5, k1, [ p2, k1 ] 2 times, turn.
- Row 3 (RS): DS, [ k2tog, yo, p1 ] 2 times, k2, k2tog, k1.
- Row 4 (WS): p4, [ k1, p2 ] 2 times, kDS, p6, k1, turn.
- Row 5 (RS): DS, k6, p1, [ yo, ssk, p1 ] 2 times, k1, k2tog, k1.
- Row 6 (WS): p3, k1, [ p2, k1 ] 2 times, p6, kDS, [ p2, k1 ] 2 times, turn.
- Row 7 (RS): **Sizes 1, 2, 4, 5:** DS, [ k2tog, yo, p1 ] 2 times, k6, p1, [ k2tog, yo, p1 ] 2 times, k3.  
**Size 3:** DS, [ k2tog, yo, p1 ] 2 times, 3/3 LC, p1, [ k2tog, yo, p1 ] 2 times, k3.
- Row 8 (WS): p3, k1, [ p2, k1 ] 2 times, p6, [ k1, p2 ] 2 times, kDS, p6, k1, turn.
- Row 9 (RS): DS, [ k6, p1, yo, ssk, p1, yo, ssk, p1 ] 2 times, k3.
- Row 10 (WS): **Size 1:** p3, [ k1, p2, k1, p2, k1, p6 ] 2 times, kDS, p2, k1, p3.  
**Sizes 2, 3, 4, 5:** p3, [ k1, p2, k1, p2, k1, p6 ] 2 times, kDS, [ p2, k1 ] 2 times, turn.
- Row 11 (RS): **Size 1:** k3, p1, k2tog, yo, p1, [ 3/3 LC, p1, k2tog, yo, p1, k2tog, yo, p1 ] 2 times, k3.  
**Size 2:** DS, k2, p1, k2tog, yo, p1, [ 3/3 LC, p1, k2tog, yo, p1, k2tog, yo, p1 ] 2 times, k3.  
**Size 3:** DS, [ k2tog, yo, p1 ] 2 times, [ k6, p1, k2tog, yo, p1, k2tog, yo, p1 ] 2 times, k3.  
**Sizes 4, 5:** DS, [ k2tog, yo, p1 ] 2 times, [ 3/3 LC, p1, k2tog, yo, p1, k2tog, yo, p1 ] 2 times, k3.
- Row 12 (WS): **Size 1:** p3, [ k1, p2, k1, p2, k1, p6 ] 2 times, **PM**, k1, p2, k1, p3. Then proceed to **Section 2**.  
**Size 2:** p3, [ k1, p2, k1, p2, k1, p6 ] 2 times, **PM**, [ k1, p2 ] 2 times, kDS, p2, k1, p3. Then proceed to **Section 2**.  
**Sizes 3, 4, 5:** p3, [ k1, p2, k1, p2, k1, p6 ] 2 times, [ k1, p2 ] 2 times, kDS, p6, k1, turn.
- Row 13 (RS): **Sizes 3, 4, 5:** DS, [ k6, p1, yo, ssk, p1, yo, ssk, p1 ] 3 times, k3.
- Row 14 (WS): **Size 3:** p3, [ k1, p2, k1, p2, k1, p6 ] 3 times, kDS, p2, k1, p3.  
**Sizes 4, 5:** p3, [ k1, p2, k1, p2, k1, p6 ] 3 times, kDS, [ p2, k1 ] 2 times, turn.
- Row 15 (RS): **Size 3:** k3, p1, k2tog, yo, p1, [ 3/3 LC, p1, k2tog, yo, p1, k2tog, yo, p1 ] 3 times, k3.

**Size 4:** DS, k2, p1, k2tog, yo, p1, [ k6, p1, k2tog, yo, p1, k2tog, yo, p1 ] 3 times, k3.

**Size 5:** DS, [ k2tog, yo, p1 ] 2 times, [ k6, p1, k2tog, yo, p1, k2tog, yo, p1 ] 3 times, k3.

Row 16 (WS): **Size 3:** p3, [ k1, p2, k1, p2, k1, p6 ] 3 times, **PM**, k1, p2, k1, p3. Then proceed to **Section 2**.

**Size 4:** p3, [ k1, p2, k1, p2, k1, p6 ] 3 times, [ k1, p2 ] 2 times, kDS, p2, k1, p3.

**Size 5:** p3, [ k1, p2, k1, p2, k1, p6 ] 3 times, [ k1, p2 ] 2 times, kDS, p6, k1, turn.

Row 17 (RS): **Size 4:** k1, [ k2, p1, yo, ssk, p1 ] 2 times, [ k6, p1, yo, ssk, p1, yo, ssk, p1 ] 3 times, k3.

**Size 5:** DS, [ k6, p1, yo, ssk, p1, yo, ssk, p1 ] 4 times, k3.

Row 18 (WS): **Size 4:** p3, [ k1, p2, k1, p2, k1, p6 ] 3 times, [ k1, p2 ] rep to last 1 st, p1.

**Size 5:** p3, [ k1, p2, k1, p2, k1, p6 ] 4 times, kDS, p2, k1, p3.

Row 19 (RS): **Size 4:** k1, [ k2, p1, k2tog, yo, p1 ] 2 times, [ 3/3 LC, p1, k2tog, yo, p1, k2tog, yo, p1 ] 3 times, k3.

**Size 5:** k3, p1, k2tog, yo, p1, [ 3/3 LC, p1, k2tog, yo, p1, k2tog, yo, p1 ] 4 times, k3.

Row 20 (WS): **Size 4:** p3, [ k1, p2, k1, p2, k1, p6 ] 3 times, **PM**, [ k1, p2 ] rep to last 1 st, p1.

**Size 5:** p3, [ k1, p2, k1, p2, k1, p6 ] 4 times, **PM**, k1, p2, k1, p3.

## **Section 2: (Neckline Shaping)**

Row 1 (RS): k1, [ k2, p1, yo, ssk, p1 ] rep to M, **SM**, [ k6, p1, yo, ssk, p1, yo, ssk, p1 ] rep to last 3 sts, k3. TS: 36 (42, 49, 55, 62)

Row 2 (WS): p3, [ k1, p2, k1, p2, k1, p6 ] rep to M, **SM**, [ k1, p2 ] rep to last 1 st, p1.

Row 3 (RS): k1, [ k2, p1, k2tog, yo, p1 ] rep to M, **SM**, [ k6, p1, k2tog, yo, p1, k2tog, yo, p1 ] rep to last 3 sts, k3.

Row 4 (WS): Same as Row 2.

Row 5 (RS): Same as Row 1.

Row 6 (WS): Same as Row 2.

Row 7 (RS): k1, [ k2, p1, k2tog, yo, p1 ] rep to M, **SM**, [ 3/3 LC, p1, k2tog, yo, p1, k2tog, yo, p1 ] rep to last 3 sts, k3.

Row 8 (WS): Same as Row 2.

Row 9 (RS): k1, [ k2, p1, yo, ssk, p1 ] rep to M, **SM**, [ k6, p1, yo, ssk, p1, yo, ssk, p1 ] rep to last 3 sts, k1, M1R, k2. TS: 37 (43, 50, 56, 63)

Row 10 (WS): p4, [ k1, p2, k1, p2, k1, p6 ] rep to M, **SM**, [ k1, p2 ] rep to last 1 st, p1.

Row 11 (RS): k1, [ k2, p1, k2tog, yo, p1 ] rep to M, SM, [ k6, p1, k2tog, yo, p1, k2tog, yo, p1 ] rep to last 4 sts, k2, M1R, k2. TS: 38 (44, 51, 57, 64)

Row 12 (WS): p5, [ k1, p2, k1, p2, k1, p6 ] rep to M, SM, [ k1, p2 ] rep to last 1 st, p1.

Row 13 (RS): k1, [ k2, p1, yo, ssk, p1 ] rep to M, SM, [ k6, p1, yo, ssk, p1, yo, ssk, p1 ] rep to last 5 sts, k3, M1R, k2. TS: 39 (45, 52, 58, 65)

Row 14 (WS): p6, [ k1, p2, k1, p2, k1, p6 ] rep to M, SM, [ k1, p2 ] rep to last 1 st, p1.

Row 15 (RS): k1, [ k2, p1, k2tog, yo, p1 ] rep to M, SM, [ 3/3 LC, p1, k2tog, yo, p1, k2tog, yo, p1 ] rep to last 6 sts, k4, M1R, k2. TS: 40 (46, 53, 59, 66)

Row 16 (WS): p7, [ k1, p2, k1, p2, k1, p6 ] rep to M, SM, [ k1, p2 ] rep to last 1 st, p1.

Row 17 (RS): k1, [ k2, p1, yo, ssk, p1 ] rep to M, SM, [ k6, p1, yo, ssk, p1, yo, ssk, p1 ] rep to last 7 sts, k5, M1R, k2. TS: 41 (47, 54, 60, 67)

Row 18 (WS): p8, [ k1, p2, k1, p2, k1, p6 ] rep to M, SM, [ k1, p2 ] rep to last 1 st, p1.

Row 19 (RS): k1, [ k2, p1, k2tog, yo, p1 ] rep to M, SM, [ k6, p1, k2tog, yo, p1, k2tog, yo, p1 ] rep to last 8 sts, k6, M1R, k2. TS: 42 (48, 55, 61, 68)

Row 20 (WS): p2, k1, p6, [ k1, p2, k1, p2, k1, p6 ] rep to M, SM, [ k1, p2 ] rep to last 1 st, p1.

Row 21 (RS): k1, [ k2, p1, yo, ssk, p1 ] rep to M, SM, [ k6, p1, yo, ssk, p1, yo, ssk, p1 ] rep to last 9 sts, k6, p1, M1R, k2. TS: 43 (49, 56, 62, 69)

Row 22 (WS): p2, M1pR, p1, k1, p6, [ k1, p2, k1, p2, k1, p6 ] rep to M, SM, [ k1, p2 ] rep to last 1 st, p1. TS: 44 (50, 57, 63, 70)

Row 23 (RS): k1, [ k2, p1, k2tog, yo, p1 ] rep to M, SM, 3/3 LC, [ p1, k2tog, yo, p1, k2tog, yo, p1, 3/3 LC ] rep to last 5 sts, p1, k2, M1R, k2. TS: 45 (51, 58, 64, 71)

Row 24 (WS): p2, M1pR, k1, p2, k1, p6, [ k1, p2, k1, p2, k1, p6 ] rep to M, SM, [ k1, p2 ] rep to last 1 st, p1. TS: 46 (52, 59, 65, 72)

**Continue to the next row of the Right Front then join the Left Front as follows:**

Joining Row(RS): k1, [ k2, p1, yo, ssk, p1 ] rep to M, SM, k6, [ p1, yo, ssk, p1, yo, ssk, p1, k6 ] rep to last 7 sts, p1, yo, ssk, p1, PM, k3, use backwards loop cast on method CO 19 sts, then join the Left Front: k3, PM, p1, yo, ssk, p1, k6, [ p1, yo, ssk, p1, yo, ssk, p1, k6 ] rep to M, SM, [ p1, yo, ssk, p1, k2 ] rep to last 1 st, k1.

TS: 111 (123, 137, 149, 163)

Next Row(WS): p1, [ p2, k1 ] rep to M, SM, p6, [ k1, p2, k1, p2, k1, p6 ] rep to 4 sts before M, k1, p2, k1, RM, p to M, RM, k1, p2, k1, p6, [ k1, p2, k1, p2, k1, p6 ] rep to M, SM, [ k1, p2 ] rep to last 1 st, p1.

Then work the following Rows 1~8. *(Please refer to Chart B)*

Row 1 (RS): k1, [ k2, p1, k2tog, yo, p1 ] rep to M, SM, k6, [ p1, k2tog, yo, p1, k2tog, yo, p1, k6 ] rep to M, SM, [ p1, k2tog, yo, p1, k2 ] rep to last 1 st, k1.

Row 2 (WS): p1, [ p2, k1 ] rep to M, SM, p6, [ k1, p2, k1, p2, k1, p6 ] rep to M, SM, [ k1, p2 ] rep to last 1 st, p1.

Row 3 (RS): k1, [ k2, p1, yo, ssk, p1 ] rep to M, SM, k6, [ p1, yo, ssk, p1, yo, ssk, p1, k6 ] rep to M, SM, [ p1, yo, ssk, p1, k2 ] rep to last 1 st, k1.

Row 4 (WS): Same as Row 2.

Row 5 (RS): k1, [ k2, p1, k2tog, yo, p1 ] rep to M, SM, 3/3 LC, [ p1, k2tog, yo, p1, k2tog, yo, p1, 3/3 LC ] rep to M, SM, [ p1, k2tog, yo, p1, k2 ] rep to last 1 st, k1.

Row 6 (WS): Same as Row 2.

Row 7 (RS): Same as Row 3.

Row 8 (WS): Same as Row 2.

Rep Rows 1~8, 2 (2, 3, 4, 5) more times, then rep Rows 1~4 once again, until you have completed Row 28 (28, 36, 44, 52).

### Continue to the next row of the Front then join the Back for working in the round

Joining Rnd: \*k1, [ k2, p1, k2tog, yo, p1 ] rep to M, SM, 3/3 LC, [ p1, k2tog, yo, p1, k2tog, yo, p1, 3/3 LC ] rep to M, SM, [ p1, k2tog, yo, p1, k2 ] rep to last 1 st, k1, use backwards loop cast on method, CO 8 sts for the underarm\*, join the Back: rep \*~\*, PM for BOR.

TS: 238 (262, 290, 314, 342)

Next Rnd: \*p1, [ k2, p1 ] rep to M, SM, k6, [ p1, k2, p1, k2, p1, k6 ] rep to M, SM\*, rep \*~\*, [ p1, k2 ] rep to M(BOR).

### Body

Rnd 1: p1, [ k2, p1, yo, ssk, p1 ] rep to M, SM, \*k6, [ p1, yo, ssk, p1, yo, ssk, p1, k6 ] rep to M, SM\*, p1, yo, ssk, p1, [ k2, p1, yo, ssk, p1 ] rep to M, SM, rep \*~\*, p1, yo, ssk, [ p1, k2, p1, yo, ssk ] rep to M(BOR).

Rnd 2: \*p1, [ k2, p1 ] rep to M, SM, k6, [ p1, k2, p1, k2, p1, k6 ] rep to M, SM\*, rep \*~\*, [ p1, k2 ] rep to M(BOR).

Rnd 3: p1, [ k2, p1, k2tog, yo, p1 ] rep to M, SM, \*k6, [ p1, k2tog, yo, p1, k2tog, yo, p1, k6 ] rep to M, SM\*, p1, k2tog, yo, p1, [ k2, p1, k2tog, yo, p1 ] rep to M, SM, rep \*~\*, p1, k2tog, yo, [ p1, k2, p1, k2tog, yo ] rep to M(BOR).

Rnd 4: Same as Rnd 2.

Rnd 5: Same as Rnd 1.

Rnd 6: Same as Rnd 2.

Rnd 7: p1, [ k2, p1, k2tog, yo, p1 ] rep to M, SM, \*3/3 LC, [ p1, k2tog, yo, p1, k2tog, yo, p1, 3/3 LC ] rep to M, SM\*, p1. k2tog, yo, p1, [ k2, p1, k2tog, yo, p1 ] rep to M, SM, rep \*~\*, p1, k2tog, yo, [ p1, k2, p1, k2tog, yo ] rep to M(BOR).

Rnd 8: Same as Rnd 2.

Rep Rnds 1~8, 5 more times. (Or repeat until your desired length)

## Hem

Switch to 3.5 mm (US 4) needle:

Option 1:

Knit 3 rnds (Remove all stitch markers except the BOR marker), then purl 1 rnd, knit 1 rnd. BO all stitches knitwise.

Option 2:

Working in 1 x 1 ribbing for a total of 5 rnds, then BO with Tubular bind off method.

## Neckband

With 3.5 mm (US 4) needles and the right side facing, beginning at the back neck CO edge, pick up and knit 33 sts from the CO edge of the back neck, pick up and knit 29 (29, 32, 35, 35) sts down the neckline edge (3 sts for every 4 rows evenly, you can make slight adjustments while picking up stitches to match the stitch count), pick up and knit 19 sts from the front neck CO edge, pick up and knit 29 (29, 32, 35, 35) sts up the neckline edge (3 sts for every 4 rows evenly), PM for BOR.

TS: 110 (110, 116, 122, 122)

Option 1:

Knit 2 rnds, then purl 1 rnd, knit 1 rnd. BO all stitches knitwise.

Option 2:

Working in 1 x 1 ribbing for a total of 4 rnds, then BO with Tubular bind off method.

## Sleeve (Both alike)

With 4 mm (US 6) needle and right side facing, beginning at the center underarm, pick up and knit 4 sts from the CO edge of the underarm, then pick up and knit 81 (81, 93, 105, 118) sts ( 3 sts for every 4 rows) around the armhole edge, pick up and knit 4 sts from the leftover CO

edge of the underarm, **PM** for BOR.

TS: 89 (89, 101, 113, 126)

Rnd 1: **Sizes 1, 2:** k2tog, p1, [ yo, ssk, p1 ] 2 times, [ k6, p1, yo, ssk, p1, yo, ssk, p1 ] rep to last 2 sts, ssk.

**Size 3:** k2tog, p1, [ yo, ssk, p1 ] 2 times, [ k6, p1, yo, ssk, p1, yo, ssk, p1 ] rep to last 1 st, k1.

**Size 4, 5:** k1, p1, [ yo, ssk, p1 ] 2 times, [ k6, p1, yo, ssk, p1, yo, ssk, p1 ] rep to last 1 st, k1.

TS: 87 (87, 100, 113, 126)

Rnd 2: k1, p1, [ k2, p1 ] 2 times, [ k6, p1, k2, p1, k2, p1 ] rep to last 1 st, k1.

Rnd 3: k1, p1, [ k2tog, yo, p1 ] 2 times, [ k6, p1, k2tog, yo, p1, k2tog, yo, p1 ] rep to last 1 st, k1.

Rnd 4: Same as Rnd 2.

Rnd 5: k1, p1, [ yo, ssk, p1 ] 2 times, [ k6, p1, yo, ssk, p1, yo, ssk, p1 ] rep to last 1 st, k1.

Rnd 6: Same as Rnd 2.

Rnd 7: k1, p1, [ k2tog, yo, p1 ] 2 times, [ 3/3 LC, p1, k2tog, yo, p1, k2tog, yo, p1 ] rep to last 1 st, k1.

Rnd 8: Same as Rnd 2.

Rnd 9: k1, p1, [ yo, ssk, p1 ] 2 times, [ k6, p1, yo, ssk, p1, yo, ssk, p1 ] rep to last 1 st, k1.

Rnd 10: Same as Rnd 2.

Option 1: Rep Rnds 3~10, 11 more times for the long sleeve version . (Or repeat until your desired length)

Option 2: Rep Rnds 3~10, 4 more times for the short sleeve version . (Or repeat until your desired length)

### **Cuff** (Both alike)

Switch to 3.5 mm (US 4) needle:

Option 1:

Knit 3 runds, purl 1 rnd, knit 1 rnd. BO all stitches knitwise.

Option 2:

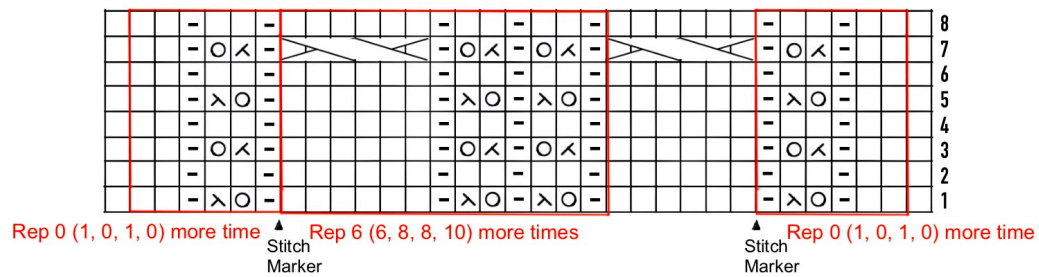
Working in 1 x 1 ribbing for a total of 5 rnds, then BO with Tubular bind off method.

**Finishing:** Weave in the ends and wet block to measurements.

The chart displays the right side of the fabric, with rows read from bottom to top.  
Odd-numbered rows read from right to left and even-numbered rows read from left to right.



## Chart A



## Chart B

