

Kirby Top



YARN: Raccoon 35%, Wool 30%, Polyamide 35% (100g-400m)

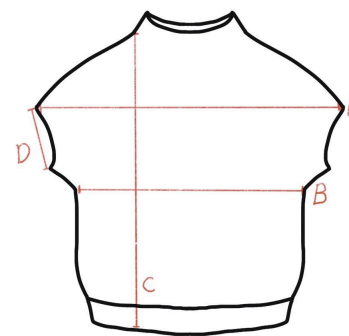
NEEDLES: 4mm[US6], 3mm[US2.5]

GAUGE: 21sts x 32rows (10 x 10cm)

SIZES: XS, (S), M, (L), XL, (2XL)

WEIGHT: 160, (170), 180, (200), 220, (235)g

-SIZE GUIDE-



A: 60, (62.5), 65, (68), 70, (72)cm
23.6, (24.6), 25.6, (26.7), 27.5, (28.3)in
B: 42, (44), 46.5, (49.5), 52, (54.5)cm
16.5, (17.3), 18.3, (19.5), 20.5, (21.4)in
C: 48, (50), 52, (55), 58, (61)cm
18.9, (19.7), 20.4, (21.6), 22.8, (24)in
D: 14.5, (15), 16, (16.5), 18, (18.5)cm
5.7, (5.9), 6.3, (6.5), 7.1, (7.3)in

The sizes XS, (S), M, (L), XL, (2XL) are recommended for those with an actual bust circumference of 80, (85), 90, (95), 100, (105)cm. If you prefer a more relaxed fit, as shown in the photo on the left, it is recommended to size up.

If you don't want the sleeves to widen, you can adjust the number of repetitions of the "Yoke Increase **row 26**" to modify the bust circumference.

-CONSTRUCTION-

This is a top-down Dolman style design. After increasing for the yoke, the front and back panels are separated and knitted individually. Then, stitches are cast on using the wrap cast-on method to join the body, which is then knitted. Stitches are picked up around the armholes to knit and edge the sleeves for finishing.

-ABBREVIATIONS-

M: Marker BM: Beginning Marker PM: Place Marker SM: Slip Marker
[German short row] DS: Double stitch T: Turn kDS(pDS): remove DS with k(p)
sl wyif(b): slip 1 purlwise with yarn in front(back) sl(k): slip 1 knitwise

cdd: center double decrease

M1L: make 1 left inc, knitwise M1R: make 1 right inc, knitwise

M1Lp: make 1 left inc, purlwise M1Rp: make 1 right inc, purlwise

k2tog: knit 2 stitches together SSK: slip 2 and knit together p2tog: purl 2 sts together

Yoke

row 1: Using a 4mm[US6] needle with a 20cm cable, cast on 78, (78), 80, (80),

82, (82)sts using the Old Norwegian cast-on method.

PM(BM) and begin knitting in the round.

Maintain enough space for the sl sts, similar to horizontal colorwork.

row 2: Rep *k1, sl wyib* to end

row 3: Rep *sl wyib, k1* to end

Rep row*2-3* one more time.

row 6-14: k to end

Place markers along the knitting direction as follows.

BM, 19, (19), 20, (20), 20, (20)sts = right back, PM(M1), 1sts, PM(M2), 38, (38),

39, (39), 40, (40)sts = front, PM(M3), 1sts, PM(M4), 19, (19), 19, (19), 20, (20)sts

= left back

From the next round, inc on both sides of the st between the M on every round.

[German short row]

row 15(RS): k to M1, **M1R**, SM, k1, SM, **M1L**, k2, T

row 16(WS): DS, p2, ***M1Lp**, SM, p1, SM, **M1Rp***, p to M4,

Rep ** one more time, p2, T

row 17: DS, k to M3, ***M1R**, SM, k1, SM, **M1L***, k to M1,

Rep ** one more time, k to DS, **kDS**, k2, T

row 18: DS, p to M2, ***M1Lp**, SM, p1, SM, **M1Rp***, p to M4,

** one more time, p to DS, **pDS**, p2, T

Rep row *17-18* a total of 3 times.

row 23: DS, k to M3, ***M1R**, SM, k1, SM, **M1L***, k to M1, ** one more time,

k to DS, **kDS**, k3, T

row 24: DS, p to M2, ***M1Lp**, SM, p1, SM, **M1Rp***, p to M4,

** one more time, p to DS, **pDS**, p3, T

row 25: DS, k to M3, ***M1R**, SM, k1, SM, **M1L***, k to M1, ** one more time,

k to DS, **kDS**, k(16, (16), 17, (17), 18, (18)), **kDS**, k to M3,

** one more time, k to BM

A total of 30, (30), 31, (31), 31, (31)sts M1 1sts M2 60, (60), 61, (61), 62,

(62)sts M3 1sts M4 30, (30), 30, (30), 31, (31)sts.

[Yoke Inc]

row 26: k to M1, ***M1R**, SM, k1, SM, **M1L***, k to M3, ** one more time,

k to BM

Rep row 26 a total of 33, (36), 38, (34), 34, (34)times.

A total of 63, (66), 69, (65), 65, (65)sts M1 1sts M2 126, (132), 137, (129), 130,

(130)sts M3 1sts M4 63, (66), 68, (64), 65, (65)sts.

[XS, S, M]

k to M1, break the yarn, proceed to the Front-Back section.

[L, XL, 2XL]

k until 20sts before M1, **M1L**, k20, ***M1R**, SM, k1, SM, **M1L***, k20, **M1L**,

k until 20sts before M3, **M1L**, k20, ** one more time, k20, **M1L**, k to BM

Rep **row 26** a total of (5), 7, (9)times.

k to M1, break the yarn, proceed to the Front-Back section.

A total of (72), 74, (76)sts M1 1sts M2 (143), 148, (152)sts M3 1sts M4 (71), 74, (76)sts.

Front-Back

Remove all M, transfer the back stitches to a waste yarn, and move the center st of each shoulder (the st between the M) onto a stitch holder or a row counter ring.

Dec1

row 1(RS): k2, **k2tog**, k to last 4sts, **SSK**, k2

row 2(WS): p to end

Rep row*1-2* a total of 3, (4), 4, (5), 5, (4)times.

A total of 120, (124), 129, (133), 138, (144)sts.

Dec2

row 1: k2, **k2tog**, k to last 4sts, **SSK**, k2

row 2: p to end

row 3: k to end

row 4: p to end

Rep row*1-4* a total of 7, (7), 8, (8), 9, (10)times.

A total of 106, (110), 113, (117), 120, (124)sts.

Break the yarn and leave the front stitches on hold.

Transfer the held back sts onto the needle and work the dec rows in the same way as the front. Then, without cutting the yarn, proceed to the body section.

Body(round)

row 1: k to end, wrap cast-on (3, (3), 3, (3), 5, (5))sts, k to front, wrap cast-on (3, (3), 3, (3), 5, (5))sts.

A total of 218, (226), 232, (240), 250, (258)sts.

*Dec on both sides of the central stitch of the wrap cast-on(XS, S, M, L: 2nd sts, XL, 2XL: 3rd sts). Place a row counter ring to mark the central st.

row 2: k(9, (9), 8, (7), 6, (5)), PM(BM), k to BM

row 3: k to BM

row 4: k until 1st before center stitch, **cdd**, k until 1st before center stitch, **cdd**,
k to BM (-4sts)

Rep row 4 a total of 10, (10), 9, (8), 8, (7)times.

If knitting to hip length, reduce the number of “row 4” repeats as desired.

A total of 178, (186), 196, (208), 218, (230)sts.

Knit 45, (46), 47, (54), 57, (60) rows in stockinette stitch.

(Knit in stockinette stitch until the length from the shoulder center st reaches
43 (45), 47 (50), 53 (56) cm.)

[Rib] 5cm(1.9in) With 3mm[US2.5] needles.

row 1-20: Rep *k1, p1* to end

row 21: Rep *sl wyib, p1* to end

row 22: Rep *k1, sl wyif* to end

Bind off using the Italian bind-off technique.

Sleeve

With 4mm[US6] needles, Pick up 31, (32), 34, (35), 38, (39)sts from the wrap
cast-on next to the armhole center st to the shoulder center stitch, Transfer the
held shoulder center st onto the needle, Pick up 31, (32), 34, (35), 38, (39)sts
from the wrap cast-on next to the armhole center st, wrap cast-on 4sts.

A total of 67, (69), 73, (75), 81, (83)sts.

Work similarly to double knitting based on the 4 wrap st.

Reference link: <https://youtu.be/PzEO6awDHe8>

row 2(WS): sl2 wyif, p1, **p2tog**, T

row 3(RS): sl(k) wyib, sl wyib, k2, T

Rep row*2-3* to last st.

With only 4 sts of the sleeve band on the needle, finish by knitting the following

row: WS: **p2tog**, p1, bind off, p1, bind off

Break the yarn, Join the ends of the band together with the right sides facing,
and sew them together using a tapestry needle.

Finish the other sleeve in the same manner.

The pattern may not be copied, redistributed or sold on.

sale of garments made from this pattern is prohibited.

https://instagram.com/squirrel_voom_knit / Mail dlwl5@naver.com