

HEDERA

by Stephanie Lotven



Inspired by evergreen ivy, Hedera is a combination of sweater and poncho. Knit seamlessly in the round from the top down, this sweater features a deep circular yoke. The length of the yoke creates an incredible palette for a large, dramatic, and uncomplicated colorwork motif of creeping vines and delightful flowers. With a squishy, fold-over collar, short, ribbed sleeves, and considerable positive ease, the Hedera is certain to be the most striking and comfortable garment in your closet.



HEDERA

Yarn

Miss Babs Yowza

100% Superwash Merino Wool; 560 yd/8 oz (512 m/225 g) skeins

3 (4, 4, 5) skeins in Main Color, shown in Coastal Fog, and 1 (1, 1, 1) skein in Contrasting Color 1, shown in Beanstalk and 1 (1, 1, 1) skein in Contrasting Color 2, shown in Fig

Or approximately 1530 (1770, 2050, 2300) yards/1400 (1620, 1875, 2110) meters of DK weight yarn in main color and 290 (340, 390, 450) yards/266 (311, 357, 412) meters in contrasting color 1 and 300 (350, 410, 460) yards/275 (321, 375, 421) meters in contrasting color 2.

Sizes

1 (2, 3, 4)

Finished Measurements

Collar Circumference: 17 (17, 18¼, 18¼)"/42.5 (42.5, 45.5, 45.5) cm

Lower Circumference: 59 (70½, 83¾, 95¼)"/147.5 (176.5, 209.5, 238) cm

Yoke Length: 19¾ (19¾, 20¼, 20¼)"/49.5 (49.5, 50.5, 50.5) cm

Sleeve Length: 9 (9, 9, 9)"/22.5 (22.5, 22.5, 22.5) cm

Shown in 59"/147.5 cm, to be worn with 15-30"/37.5-75 cm of positive ease.

Needles

- US 4 [3.5 mm] circular needle, 16"/40 cm long for *turtleneck ribbing*
- US 4 [3.5 mm] circular needle, 24"/60 cm long, or size to obtain colorwork motif gauge and stockinette gauge
- US 4 [3.5 mm] circular needle, 40"/100 cm long, or size to obtain colorwork motif gauge and stockinette gauge
- US 3 [3.25 mm] circular needle, 16"/40 cm long for turtleneck ribbing, or one size smaller than needle used to obtain gauge
- US 3 [3.25 mm] circular needle, 40"/100 cm long for lower ribbing, or one size smaller than needle used to obtain gauge
- US 3 [3.25 mm] circular needle, double-pointed needles or preferred method for knitting small circumferences in the round for wrist ribbing, or one size smaller than needle used to obtain gauge

NOTE: There are two sets of circular needles used for the turtleneck. The first set of circular needles used to cast on the turtleneck should be the same size as the needles used to obtain your colorwork motif gauge. All other circular needles used for ribbing (on the second part of the turtleneck, the wrists, and the lower hem), should be one size smaller than the needles used to obtain your colorwork motif gauge.

Gauge

Blocked: 22 stitches and 24 rounds = 4"/10 cm square in colorwork motif AND stockinette stitch.

Unblocked: 24 stitches and 26 rounds = 4"/10 cm square in colorwork motif AND stockinette stitch.

NOTE: Some knitters have a tighter gauge when working in stranded colorwork versus standard stockinette stitch. You may find it necessary to go up a needle size while working the colorwork charts. Verify your colorwork gauge before working the charts.

Notions

- Stitch holders or waste yarn
- Stitch marker
- Tapestry needle

For best results when working with hand dyed yarns, we strongly suggest alternating skeins of the same color throughout your project.

HEDERA

Abbreviations

BOR: Beginning of round

CC: Contrasting color

k: Knit

k2tog: Knit 2 stitches together [1 stitch decreased]

m: Marker

MC: Main color

m1L: (Make 1 left) Insert left needle, from front to back, under strand of yarn which runs between next stitch on left needle and last stitch on right needle; knit this stitch through back loop [1 stitch increased]

p: Purl

w&t: Wrap and turn

Swoncho (Begins at Neck)

Collar

With your larger 16"/40 cm circular needles and MC, cast on 120 (120, 128, 128) stitches. Place BOR marker and join to work in the round.

NOTE: The BOR marker is placed at the center back of your work.

Work in 2x2 ribbing [k2, p2] until your collar measures 5"/12.5 cm from your cast on edge.

Change to your smaller 16"/40 cm circular needles. Continue to work in 2x2 ribbing until your collar measures 9"/22.5 cm from your cast on edge.

Change to your larger circular needles appropriate for achieving the stockinette stitch gauge. Depending on your size, you may feel more comfortable using either the 16 or 24"/40 or 60 cm circular needles. If you begin with the 16" circular needle, change to the 24" as it is comfortable for you.

Size 1: *K2tog, k6; repeat from * around [15 stitch decreased]. 105 stitches.

Size 2: *M1L, k24; repeat from * around [5 stitches increased]. 125 stitches.

Size 3: M1L, k8, *m1L, k7, m1L, k8; repeat from * to end [17 stitches increased]. 145 stitches.

Size 4: [M1L, k3] three times, *m1L, k4, m1L, k3; repeat from * to end [37 stitches increased]. 165 stitches.

Yoke

Neckline Short Row Shaping

You will now work short rows in order to raise the back of the neckline for a better fitting sweater.

ROW 1 (RIGHT SIDE): Beginning at the BOR, k32 (38, 44, 50), w&t.

ROW 2 (WRONG SIDE): Purl to BOR m, sm, p32 (38, 44, 50), w&t.

ROW 3: Knit to last wrapped stitch, knit wrap together with wrapped stitch, k4, w&t.

ROW 4: Purl to last wrapped stitch, purl wrap together with wrapped stitch, p4, w&t.

Repeat Rows 3-4 an additional 1 (2, 2, 2) time(s).

NEXT ROW (RIGHT SIDE): Knit to BOR marker.

You will now resume working in the round.

NEXT ROUND: Knit to end, working wraps together with wrapped stitches as you come to them.

As you work through the charts and the number of stitches increase, change to the 40"/100 cm length circular needle as it is comfortable for you.

Join CC1 and work Chart A (page 5) [42 (50, 58, 66) stitches increased]. 147 (175, 203, 231) stitches.

HEDERA

Work Chart B (page 5) [84 (100, 116, 132) stitches increased]. 231 (275, 319, 363) stitches.

Work Chart C (page 5) [84 (100, 116, 132) stitches increased]. 315 (375, 435, 495) stitches.

Work Chart D (page 5) [42 (50, 58, 66) stitches increased]. 357 (425, 493, 561) stitches.

Work Chart E (page 6) [42 (50, 58, 66) stitches increased]. 399 (475, 551, 627) stitches.

Work Chart F (page 6). After working Round 1, break CC1 and join CC2 [21 (25, 29, 33) stitches increased]. 420 (500, 580, 660) stitches.

Break CC2.

Knit three (three, six, six) rounds.

Divide for Body and Sleeves

DIVISION ROUND: K78 (94, 111, 126), place the next 54 (62, 68, 78) stitches on hold for the sleeve, using the cable cast on method, cast on 6 (6, 8, 10), k156 (188, 222, 252), place the next 54 (62, 68, 78) stitches on hold for Sleeve, using the cable cast on method, cast on 6 (6, 8, 10), k78 (94, 111, 126).

You should now have 324 (388, 460, 524) Body stitches on the needles and two sets of 54 (62, 68, 78) Sleeve stitches on hold.

Body

Knit every round until Body measures 4½"/11.5cm or 1½"/4 cm less than your desired length from the underarm.

Change to smaller 40"/100cm circular needles, appropriate for ribbing. Work in 2x2 ribbing [k2, p2] for 1½"/4 cm.

Bind off all stitches in pattern.

Sleeves (Make Two)

Using MC and double-pointed needles, beginning at the middle of the underarm, pick up and knit 3 (3, 4, 5) stitches. Knit across 54 (62, 68, 78) held stitches. Pick up and knit 3 (3, 4, 5) stitches from the underarm. Place marker and join in the round.

You should have 60 (68, 76, 88) stitches on your needles.

Work in 2x2 ribbing [k2, p2] for 9"/22.5 cm or desired length.

NOTE: If you would like wider sleeves, consider using a larger needle size.

Bind off all stitches in pattern.

Finishing

Weave in ends.

Block gently to finished measurements.



HEDERA

Chart Instructions

To work Chart, begin at the bottom right corner and work right to left.

Work all charts 21 (25, 29, 33) times total.

NOTE: You will not need to carry the contrasting color in the following rows: Chart B: Rows 1 and 5, Chart C: Rows 1 and 6, Chart D: Rows 1 and 9, Chart E: Rows 1, 10 and 19, and Chart F: Row 1. Simply work the row in your main color and slip the contrasting color as you come to it.

Chart A

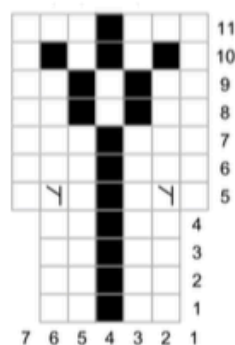
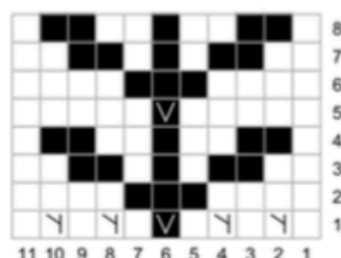


Chart B



Key

 MC
 CC1
 k
<div style="position: absolute; top: 50%; left: 50%; transform: translate(-50%, -50%); font-size: 8px;">V</div> sl
<div style="position: absolute; top: 50%; left: 50%; transform: translate(-50%, -50%); font-size: 8px;">Y</div> m1L

Chart C

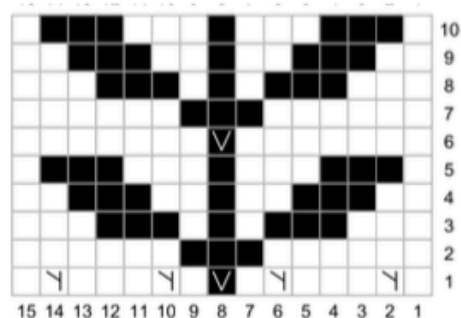
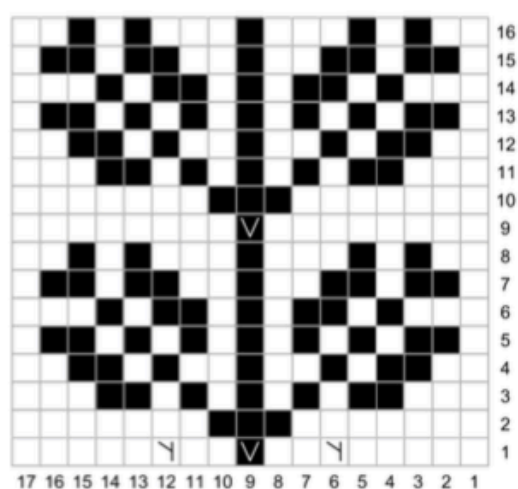
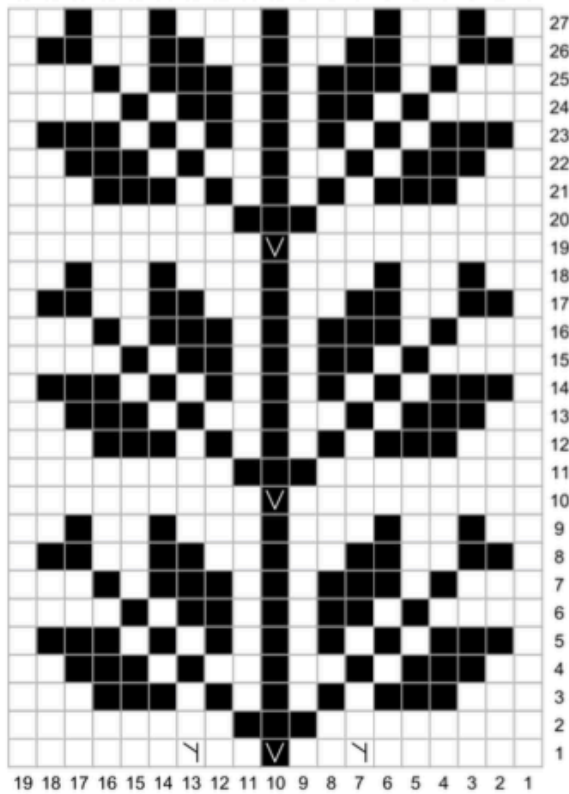


Chart D



HEDERA

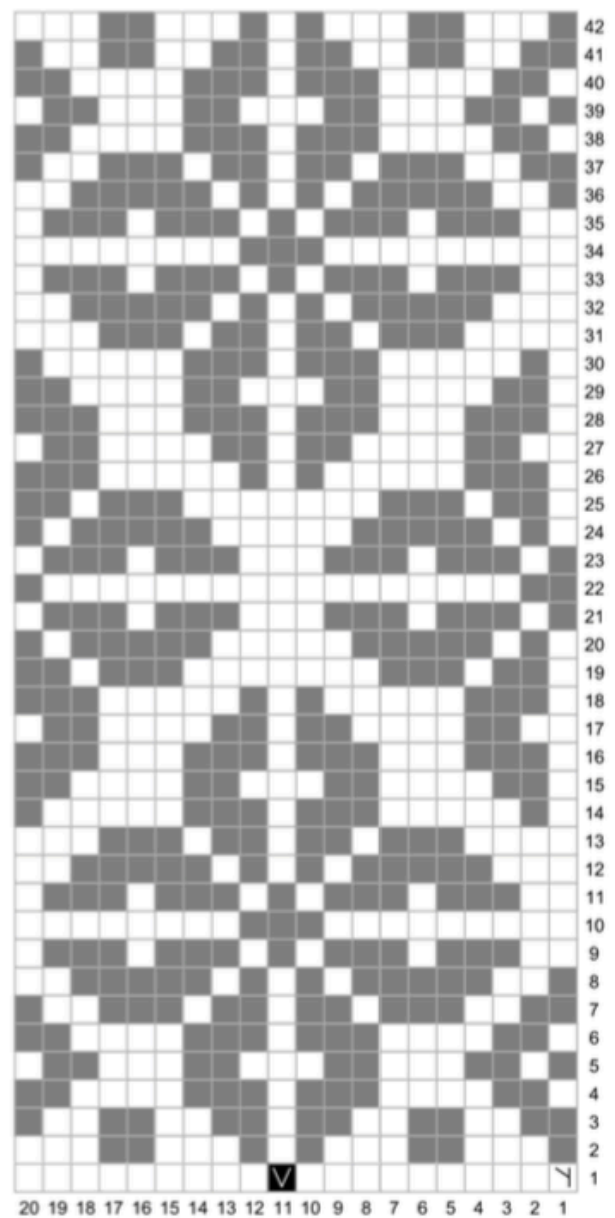
Chart E



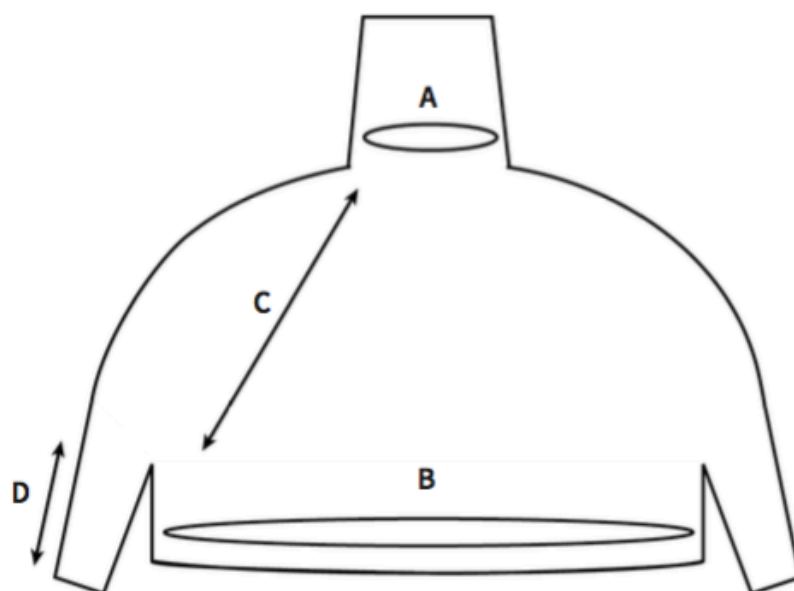
Key

- ☐ MC
- ☒ CC1
- ☒ CC2
- ☐ k
- ☒ sl
- ☒ m1L

Chart F



HEDERA



Size	1	2	3	4
A: Collar circumference	17" 42.5 cm	17" 42.5 cm	18¼" 45.5 cm	18¼" 45.5 cm
B: Lower circumference	59" 147.5 cm	70½" 176.5 cm	83¾" 209.5 cm	95¼" 238 cm
C: Yoke depth	19¾" 49.5 cm	19¾" 49.5 cm	20¼" 50.5 cm	20¼" 50.5 cm
D: Sleeve length	9" 22.5 cm	9" 22.5 cm	9" 22.5 cm	9" 22.5 cm