



CORBIS

by Natasja Hornby

WE LIVE AT THE EDGE OF THE MIRACULOUS

Follow Corbis' journey as it moves organically through rhythmic basketweave into tactile diamond shapes. The playful tassels that adorn the border echo the shapes of the diamond motif, contributing further to the lines and movement of this beautifully versatile wrap.



TECHNICAL INFORMATION

CONSTRUCTION

Corbis is a triangle shawl that is worked top-down from the center out, starting with a classic garter tab. Instructions are given for a shawl with or without the knotted-on tassels.

SIZE

One size.
Approximately 180 cm / 71" wingspan along the top edge and 70 cm / 27.5" deep.

YARN

Sport weight yarn with good stitch definition and some elasticity. Wool or wool blends are ideal.

For a shawl without tassels approx 980m / 1070 yards.

The tassels take approx another 150 m / 165 yards.

Sample shown in De Rerum Natura Ulysse; 100% French merino, 185m / 202 yards per 50 gr, colorway Darjeeling.

NEEDLES

Needle A (for the basketweave sections of the shawl)

One 100 cm / 40" circular needle, in size needed to obtain gauge listed.
Suggested needle size: 3.25 mm / US #3.

Needle B (for the diamond sections of the shawl)

One 100 cm / 40" circular needle.
Suggested needle size: 3.75 mm / US #5.

Optional (for the tassels)

One 4.5 mm / size G crochet hook.

GAUGE

Measured after blocking.

Basketweave 20 st x 38 rows = 10 x 10 cm / 4 x 4" on Needle A.

Diamond Cables 20 st x 32 rows = 10 x 10 cm / 4 x 4" on Needle B.

NOTIONS

Stitch markers, cable needle, tapestry needle, blocking tools.

STITCH PATTERNS

The stitch patterns described below are for swatching purposes only. When working on the shawl, follow the directions given for the various sections.

Basketweave

Worked over a multiple of 8 + 3 sts.

Row 1 (RS): k3, (p5, k3) to end.

Row 2 (WS): p3, (k5, p3) to end.

Row 3 & 4: work as Row 1 & 2.

Row 5: k2, (ssk, yo, k3, yo, k2tog, k1) to last st, k1.

Row 6: p to end.

Row 7: p4, (k3, p5) to last 7 sts, k3, p4.

Row 8: k4, (p3, k5) to last 7 sts, p3, k4.

Row 9 & 10: work as Row 7 & 8.

Row 11: (k3, yo, k2tog, k1, ssk, yo) to last 3 sts, k3.

Row 12: p to end.

Diamonds

The Diamond pattern is charted only. For swatching purposes you can work two repeats of the Diamond Chart on page 7.





TECHNIQUES

Cabling without a cable needle

If you prefer to work the Left purl twists within the Diamond pattern without a cable needle, you can find a tutorial on this technique here: [LPT \(Left Purl Twist\), Knitting Stitch Tutorial - YouTube](#)

Make Bobble

When the Chart indicates to make a bobble (MB) work as follows.

1. Knit into the front, back and front again of the indicated st, making 3 sts out of 1 st.
2. Turn your work to the WS and purl those 3 sts.
3. Turn to the RS, slip 2 sts together as if to knit, knit 1, pass the slipped sts over the st just knit (central double decrease).

Instead of turning your work for Step 2 & 3 you can also knit the 3 sts backwards (instead of turning and purling) after Step 1.

Here you can find a video tutorial on using backwards knitting: ["Backwards" \(or "Mirror"\) Knitting - v e r y p i n k . c o m - knitting patterns and video tutorials](#)

Centered Eyelets

The eyelets close to the lower edge are used to knot the tassels through. They are centered in the columns consisting of three knit sts. The photo tutorial on page 9 shows how to work these centered eyelets.

Icelandic Bind Off

For the Icelandic Bind Off, please refer to the photo tutorial on page 10.

Tassels

The (optional) tassels are knotted on. Please refer to the photo tutorial on page 11 for further explanation.

For pattern support and possible errata, please go to the Corbis thread on Ravelry [Ravelry: Moonstruck Knits by Natasja Hornby discussion topic - Pattern Questions - Corbis](#)

DIRECTIONS

UPPER BODY SHAWL

Garter tab cast on

With Needle A, CO 3 sts.

Knit 22 rows (11 garter ridges).

Turn the garter tab 90 degrees clockwise and PU and k 11 sts (1 st in every garter ridge) along the long edge of the garter tab. Turn your work 90 degrees and PU and k 3 sts in the CO edge; 17 sts.

Next row (WS): k4, p3, k1, pm, p1, pm, k1, p3, k4.

Start increases, set up basketweave pattern

Row 1 (RS): k3, M1pL, p1, k3, p1, M1pR, slm, k1, slm, M1pL, p1, k3, p1, M1pR, k3; 21 sts.

Row 2 (WS): k5, p3, k2, slm, p1, slm, k2, p3, k5.

Row 3: k3, M1pL, p2, k3, p2, M1pR, slm, k1, slm, M1pL, p2, k3, p2, M1pR, k3; 25 sts.

Row 4: k6, p3, k3, slm, p1, slm, k3, p3, k6.

Row 5: k3, M1pL, p3, k3, p3, M1pR, slm, k1, slm, M1pL, p3, k3, p3, M1pR, k3; 29 sts.

Row 6: k7, p3, k4, slm, p1, slm, k4, p3, k7.

Row 7: k3, M1pL, p4, k3, p4, M1pR, slm, k1, slm, M1pL, p4, k3, p4, M1pR, k3; 33 sts.

Row 8: k8, p3, k5, slm, p1, slm, k5, p3, k8.

Row 9: k3, M1L, p5, k3, p5, M1R, slm, k1, slm, M1L, p5, k3, p5, M1R, k3; 37 sts.

Row 10: k3, p1, k5, p3, k5, p1, slm, p1, slm, p1, k5, p3, k5, p1, k3.

BASKETWEAVE CHARTS

Next, you are going to work the basketweave pattern according to the Charts. The Charts show one half of the shawl. After the central stitch you will repeat the Chart for the other half. For the RS (odd) rows you work from the RH to the LH side of the Chart. When you are instructed to work the Chart again, you work the same row from right to left again. For the WS (even) rows you work from the LH to the RH side of the Chart. When you are instructed to work the Chart again, you work the same row from left to right again.

Work **Basketweave Chart A** as follows.

RS rows: k3, work Basketweave Chart A, slm, k1, slm, work Chart A again, k3.

WS rows: k3, work Basketweave Chart A, slm, p1, slm, work Chart A again, k3; 89 sts.

Next, work **Basketweave Chart B** as follows.

RS rows: k3, work Basketweave Chart B, slm, k1, slm, work Chart B again, k3.

WS rows: k3, work Basketweave Chart B, slm, p1, slm, work Chart B again, k3; 149 sts.

Next, work Row 9 - 20 of **Basketweave Chart A** as before; 173 sts.

DIAMOND CHART

Next, change to Needle B and work the Diamond Chart as follows.

RS rows: k3, work Diamond Chart, slm, k1, slm, work Chart again, k3.

WS rows: k3, work Diamond Chart, slm, p1, slm, work Chart again, k3; 225 sts.



BASKETWEAVE CHART C

Next, change to Needle A. Work

Basketweave Chart C as follows, noting the difference in the increase rate.

RS rows: k3, work Basketweave Chart C, slm, k1, slm, work Chart C again, k3.

WS rows: k3, work Basketweave Chart C, slm, p1, slm, work Chart C again, k3.

After working the Chart there are 301 sts on your needle.

DIAMOND BORDER CHART

Change to Needle B and work Row 1 - 32 of the **Diamond Border Chart** as follows. Note there are no increases on Row 19.

RS rows: k3, work Diamond Border Chart, slm, k1, slm, work Chart again, k3.

WS rows: k3, work Diamond Border Chart, slm, p1, slm, work Chart again, k3.

After working the Chart there are 361 sts on your needle.

Next, work Row 15 - 44 of the **Diamond Border Chart**; 417 sts.

Next, continue with needle B and work Row 7 - 18 of **Basketweave Chart A** as before; 441 sts.

For a shawl **with** tassels, proceed to **Centered Eyelets**.

For a shawl **without** tassels work the next two rows as follows.

Row 1 (RS): k3, M1pL, p3, (k3, p5) to 6 sts bef m, k3, p3, M1pR, slm, k1, slm, M1pL, p3, (k3, p5) to last 9 sts, k3, p3, M1pR, k3.

Row 2 (WS): k7, (p3, k5) to 7 sts bef m, p3, k4, slm, p1, slm, k4, (p3, k5) to last 2 sts, k2.

Proceed to **Icelandic Bind Off**.

CENTERED EYELETS

The eyelets are used to knot the tassels through. They are centered in the columns consisting of three knit sts. On page 9 you will find a tutorial on how to work a centered eyelet.

Work the row with the centered eyelet (CE) as follows.

Knit 2, yo, k4, (work CE, k5) to 6 sts bef m, work CE, k2, work CE while rem markers, k2, (work CE, k5) to last 9 sts, work CE, k4, yo, k2.

Next row (WS) k4, p to last 4 sts, k4.

ICELANDIC BIND OFF

In the next row you are going to BO all sts holding the yarn double using a second ball of yarn. You can also hold the yarn double by working from the inside and the outside of one cake of yarn.

For the Icelandic Bind Off technique, please refer to the Photo tutorial on page 10.

TASSELS (optional)

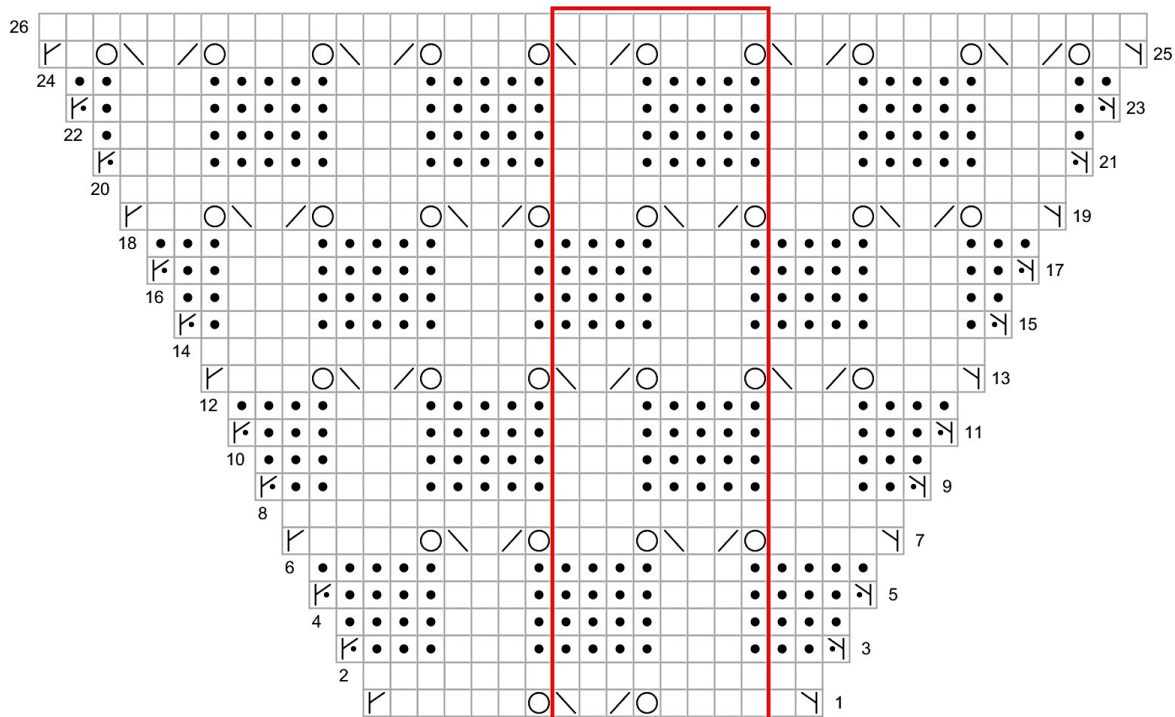
Work the tassels according to the instructions given in the Photo tutorial on page 11.

FINISHING

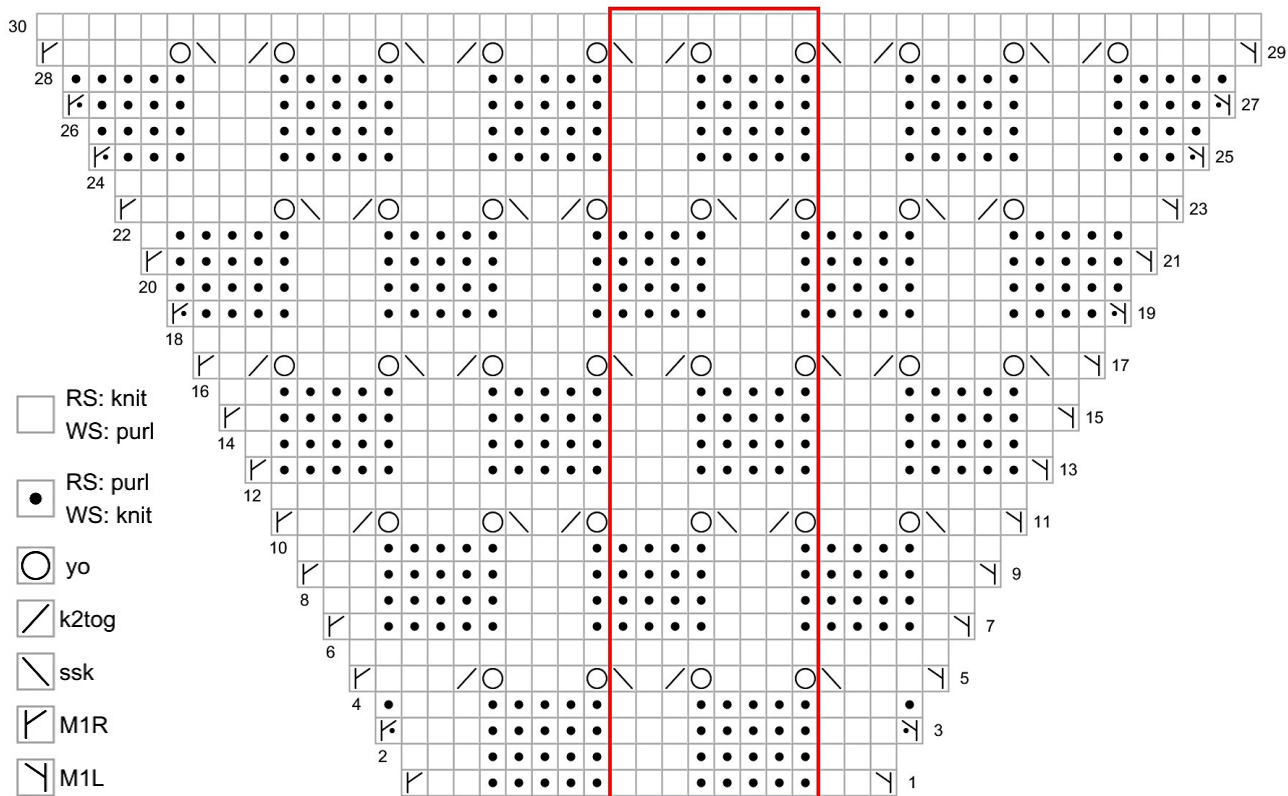
Weave in all ends and wet block your shawl to given measurements.



BASKETWEAVE CHART A



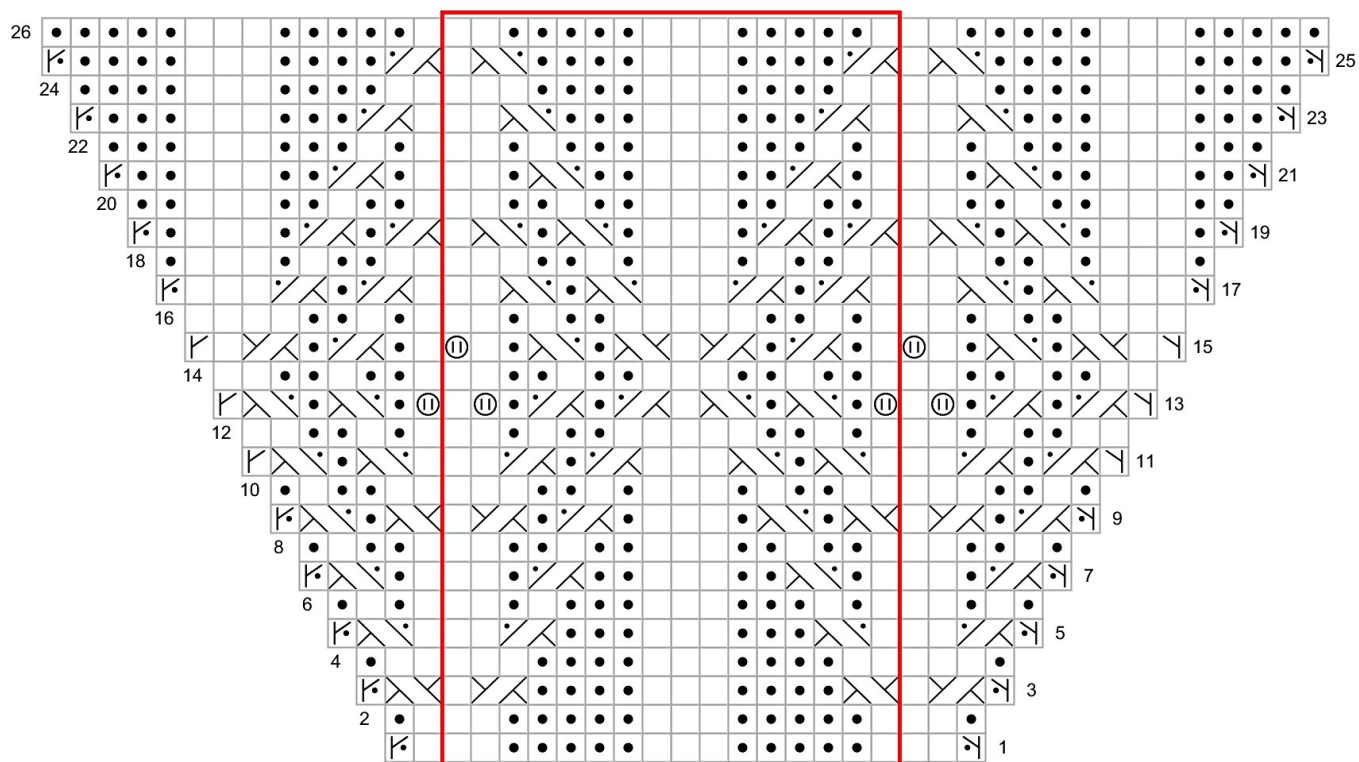
BASKETWEAVE CHART B



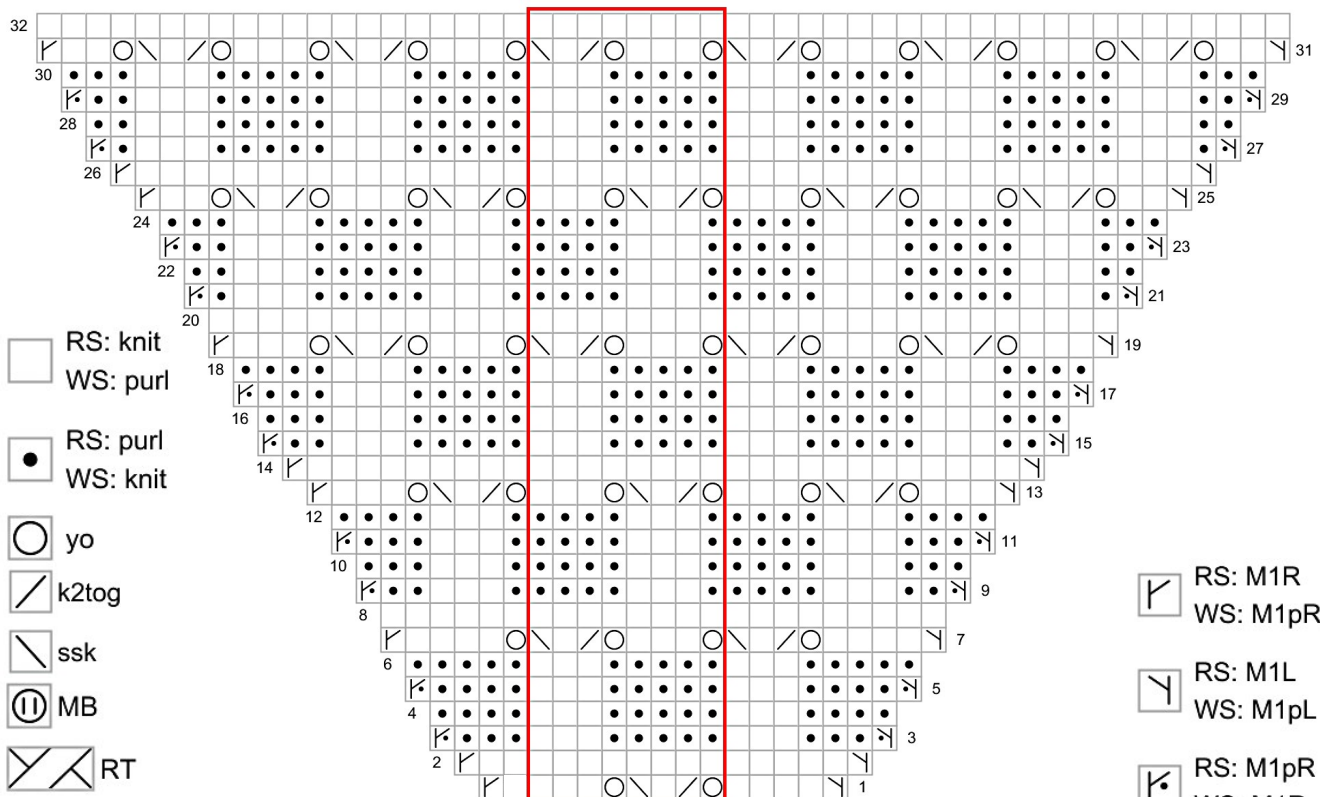
-  RS: knit
WS: purl
-  RS: purl
WS: knit
-  yo
-  k2tog
-  ssk
-  M1R
-  M1L
-  M1pR
-  M1pL
-  Repeat



DIAMOND CHART

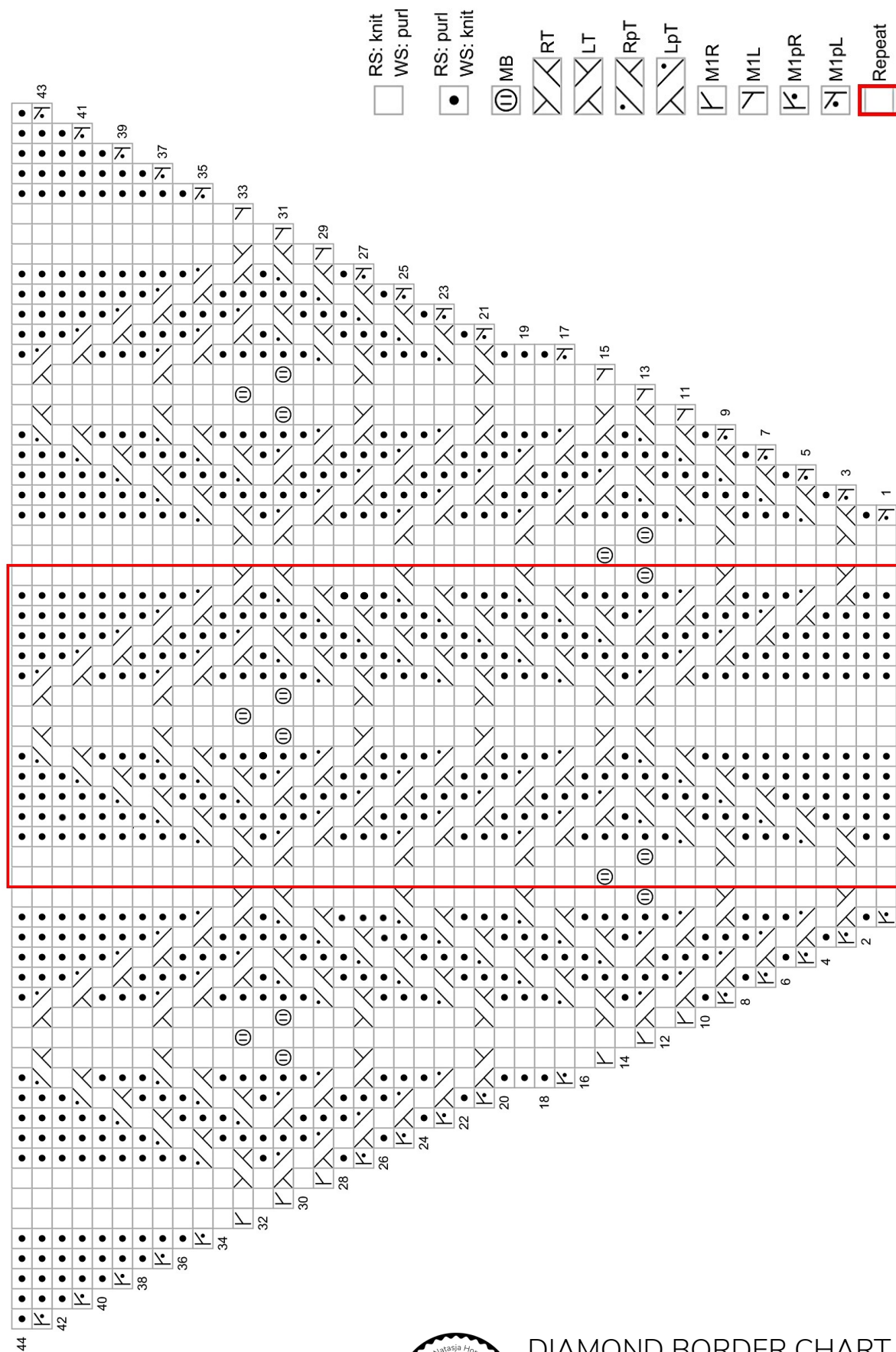


BASKETWEAVE CHART C



- RS: knit
WS: purl
- RS: purl
WS: knit
- yo
- / k2tog
- \ ssk
- ⦿ MB
- X RT
- X LT
- X RpT
- X LpT

- / RS: M1R
WS: M1pR
- \ RS: M1L
WS: M1pL
- / RS: M1pR
WS: M1R
- \ RS: M1pL
WS: M1L
- Repeat



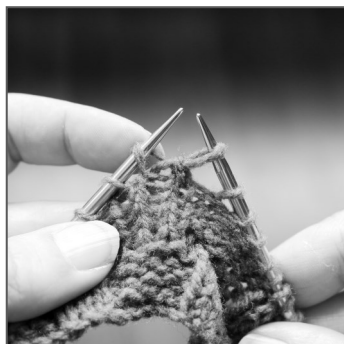
DIAMOND BORDER CHART

PHOTO TUTORIALS

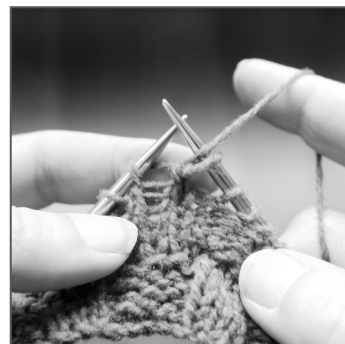
CENTERED EYELETS



Step 1: knit the given number of sts. Work the next 2 sts as a ssk, but drop only the first st on your LH needle off the needle.



The second st that was part of the ssk is still on your LH needle and is now the first st on your LH needle.



Step 2: Yarn over.



Step 3: knit the first and the second st on your LH needle together and drop the sts off the needle.



You have now worked a centered eyelet. Repeat Step 1 - 3 as instructed.

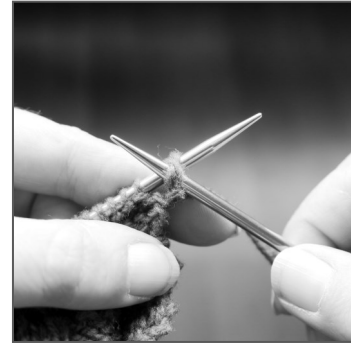
ICELANDIC BIND OFF



Step 1: holding the yarn double, knit 1 st.



Step 2: slip that 1 st from your RH to your LH needle.



Step 3: insert the RH needle pwise into the first st on the LH needle.



Step 4: insert the RH needle kwise into the second st on the LH needle, pulling the second st through the first st but leaving both sts on the LH needle.



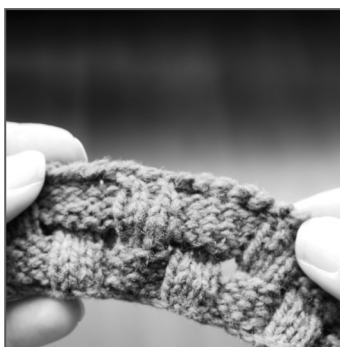
Step 5: wrap the yarn around the tip of the RH needle to knit the second st.



Step 6: drop both the second and the first st from the LH needle.

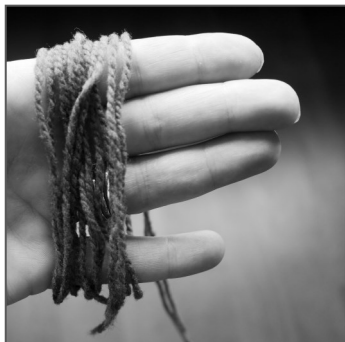


Step 7: slip the new st from RH to LH needle.



Work Step 3 - 7 until all sts are bound off.

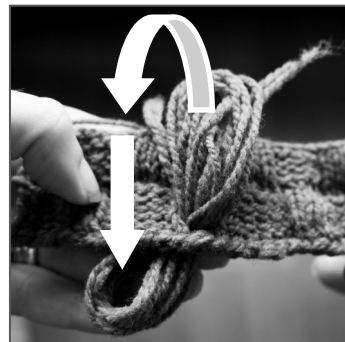
KNOTTED-ON TASSELS



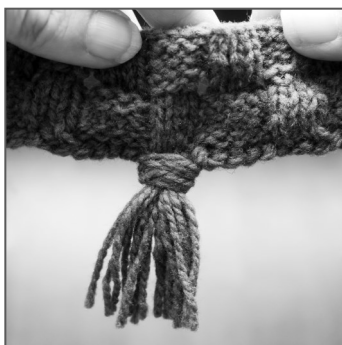
Step 1: holding the yarn double, wrap it approx 6 times around your hand.



Step 2: from WS, insert a crochet hook through an eyelet and pull the yarn loops through.



Step 3: pass the loops on the RS of the shawl through the loops on the WS.



Step 4: trim the tassel to preferred length.

ABBREVIATIONS

(x, y) = the brackets represent a repeat. Directions within the bracket should be repeated as instructed.

approx = approximately

BO = bind off

CE = centered eyelet (see Photo tutorial on page 9)

CO = cast on

k = knit

k2tog = knit 2 stitches together

LH = left hand

LpT = left purl twist; slip 1 st onto a cable needle and hold in front. Purl the next st. Knit the st from the cable needle.

LT = left twist; slip 2 sts knitwise, one at a time. Slip them back to the LH needle in turned position. Knit the second st through the back loop, then knit the first and second sts together through the back loops. Slide both sts off the needle.

M1L / M1pL = make 1 (purl) left (left leaning increase); insert left needle, from front to back, under strand of yarn which runs between next stitch on left needle and last stitch on right needle; knit (purl) this stitch through back loop.

M1R / M1pR = make 1 (purl) right (right leaning increase); insert left needle, from back to front, under strand of yarn which runs between next stitch on left needle and last stitch on right needle; knit (purl) this stitch through front loop.

MB = make bobble (see TECHNIQUES on page 3).

p = purl

pm = place marker

PU = pick up

rem = remove / removing

RH = right hand

RS = right side

RT = right twist; knit 2 sts together, leaving them on the LH needle. Insert RH needle between the same two sts and knit the first st again. Slide both sts off the needle.

RpT = right purl twist; knit into the second st on the LH needle, leaving both the first and the second st on the needle. Purl the first st on the LH needle. Slide both sts off the needle.

sl = slip (purlwise with yarn in back on RS and yarn in front on WS, unless otherwise stated).

slm = slip marker

ssk = slip, slip, knit (left leaning decrease); slip 2 st as if to k, one at a time, slip the sts back to the LH needle, knit together through back loops.

st(s) = stitch(es)

WS = wrong side

yo = yarn over

Photography

Daan Schipper

Final editing

Brigitte Wolfrum and Kathy Spitler

'We live at the edge of the miraculous'; Henry Miller

