



CATKNIT

COLOURWORK YOKE SWEATER



ANDREA RANGEL
original knitting patterns

Knit yourself a cute little cat sweater! From far away, you've just got on an elegant yoke pullover, but when folks get a closer look, they'll see so many cats, all extremely pleased with themselves, like they've just gotten to enjoy some catnip! This sweater is called CatKnit for the cats, but also because of how fun and engaging it is to knit and see those adorable kitties emerging as you work.

YARN

fingering weight yarn:

1551 (1697, 1832, 1966, 2112) [**2247, 2393, 2529, 2663**] (2810, 2944, 3090, 3225) yd/
1418 (1552, 1675, 1798, 1931) [**2055, 2188, 2313, 2435**] (2569, 2692, 2825, 2949) m

Main Colour:

1318 (1442, 1557, 1671, 1795) [**1910, 2034, 2149, 2263**] (2388, 2502, 2626, 2741) yd/
1205 (1319, 1424, 1528, 1641) [**1747, 1860, 1965, 2069**] (2184, 2288, 2401, 2506) m

Contrast Colour:

233 (255, 275, 295, 317) [**337, 359, 380, 400**]
(422, 442, 464, 484) yd/
213 (233, 251, 270, 290) [**308, 328, 347, 366**]
(386, 404, 424, 443) m

Shown in:

La Bien Aimée Twist Nouveau (100% non-superwash Merino wool; 437 yd/400 m per 100g skein)

Main Colour: Blanc

4 (4, 4, 4, 5) [**5, 5, 5, 6**] (6, 6, 7, 7) skeins

Contrast Colour: Amege

1 (1, 1, 1, 1) [**1, 1, 1, 1**] (1, 2, 2, 2) skein(s)

GAUGE

Gauge measurement should be taken after blocking.

31 sts/37 rounds = 4 in/10 cm in plain St st with middle-sized needle

31 sts/36 rounds = 4 in/10 cm in colourwork with largest needle

38 sts/32 rounds = 4 in/10 cm in 1x1 ribbing with smallest needle

SIZES & FINISHED DIMENSIONS

Sizes

A (B, C, D, E) [**F, G, H, I**] (J, K, L, M)

Chest Circumference:

34.5 (38, 40.75, 43.75, 47) [**50, 53.25, 56.25, 59.25**] (62.5, 65.5, 68.75, 71.75) in/
87.5 (97, 103.5, 111, 119.5) [**127, 135.5, 143, 150.5**] (159, 166.5, 174.5, 182) cm

Intended to be worn with 1-6 in/2.5-15 cm of positive ease.

Shown in size 38 in/97 cm with 6 in/15 cm of positive ease.

NEEDLES

Adjust needle size if necessary to obtain correct gauge.

16 in/40 cm circular needle, 32 in/80 cm circular needle, 40 in/100 cm circular needle, and set DPNs or long circular for magic loop in suggested sizes:

- US 1/2.25 mm
- US 2/2.75 mm
- US 3/3.25 mm

NOTIONS

- stitch markers
- waste yarn
- tapestry needle
- spare needles in the smallest size or one size smaller: 32 in/80 cm (sizes A-D), 40 in/100 cm (sizes E-H), or 60 in/150 cm (sizes I-M) circular needle and set DPNs or long circular for magic loop

CREDITS

Tech Editing: Susan Moskwa

Copy Editing: Sarah Endres

Model & Photography: Andrea Rangel

NOTES

GENERAL TIPS

- **Skills:** I consider this pattern to be intermediate level knitting. It includes working in the round, short row shaping, working stranded colourwork, picking up stitches, and shaping.
- **Printing this pattern:** To print just the instructions without photos or extra details, print pages 6-9. Charts are on pages 10-11 and are given in two versions, one with a dark Main Colour and one with a light Main Colour. Charts have been tested and will print out in greyscale without the need for colour printing.
- **Dealing with instructions for a large size range:** The large size range means you're likely to find a size that will fit you well, but it also means there are a lot of numbers to sift through. Different styles of brackets and bold text are used to increase the visual contrast between sizes. To make it easier to follow just your size, highlight the numbers for your size throughout the pattern before beginning.
- **Making sure your project is on track:** It's totally possible for gauge to change as you knit because we're human. To be sure you're on track, periodically steam your work-in-progress and re-check the gauge in several places. That way, if something is off, you'll know sooner rather than finishing the whole project and finding out it doesn't fit.
- **Swatching:** Swatch in the round since this project is worked in the round. Be sure to swatch both single-colour Stockinette and colourwork.
[Tutorial: Swatching in the Round](#)

CONSTRUCTION

- Sweater is worked in the round from the top down. Yoke is worked first, then Sleeve and Body stitches are separated. Body is worked, then Sleeves. Neck Band is picked up and worked from the cast-on edge.
- Colourwork is worked almost to the point of separating Body and Sleeves in many sizes. Matching pattern row gauge for colourwork is particularly important for this project so that your yoke isn't too deep.
- Short row shaping is used to bring up the back neckline and make the front neckline more comfortable. This pattern uses German short rows.
- Lifted increases (LLI and RLI) are used in place of make one increases because they looked better in my sample. Use whichever increase method you prefer.
- Body is worked with optional waist shaping.
- Cuffs, Hem, and Neck Band are finished with a tubular bind-off. If you prefer, you can bind off in pattern instead.

FIT

- The intended fit is a relaxed sweatshirt vibe, with 1-6 in/2.5-15 cm of positive ease. Choose a size that's bigger than your actual chest circumference. The model is wearing a sweater about 6 in/15 cm bigger than her actual chest circumference.
- The sweatshirt style has tight but stretchy cuffs and hem, which creates a little bit of billowy volume above the cuffs and hem. If you prefer a straighter look, work your cuffs and hem on the same needle you used for Stockinette stitch.
- Compare the schematic measurements to sweaters that fit you well to help determine if you want to make fit modifications.
- Since this sweater is worked top-down, you can try it on as you go to check lengths and adjust for your own shape and style, as well as any row-gauge variation.
- Waist shaping is given in the pattern, but if you have a straight waist or prefer a boxy fit, you may omit the shaping. If you have larger hips or tummy than your bust, or just prefer an A-line shape, simply increase instead of decreasing.
- If you need a bit more room than given in the pattern around the upper arms, increase an even number of extra stitches in your final yoke increase round and incorporate those additional stitches into your sleeves, being sure that both sleeves have the same number of stitches. (How many more stitches to increase depends on how much more room you need in the sleeves.) If you do this, you may also wish to decrease more frequently along the sleeves so that you end up with the same number of stitches at the cuffs as given in the pattern. Check the schematic on the following page and compare the upper arm measurements to a sweater you know fits you well to determine if you want to try this modification.

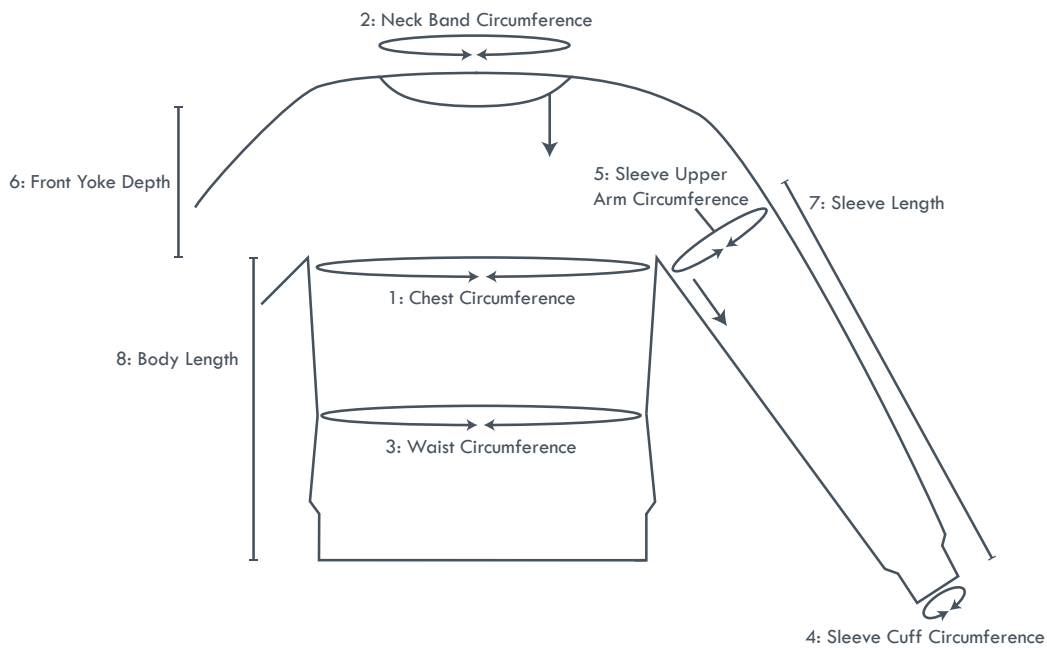
YARN CHOICE

- Many fingering weight yarns will work for this sweater. Because there are no seams, I recommend avoiding very slippery yarns with high percentages of fibres like silk, alpaca, and cotton unless you're holding them together with less smooth yarns. However, because the gauge is fairly firm, superwash Merino sock yarns should work, as long as they aren't extremely smooth and relaxed.
- Your swatch needs to be at least 6 in/15 cm x 6 in/15 cm to determine if you have achieved the called-for gauge, and whether or not you like the fabric at that gauge. Wet block your swatch before measuring. Making multiple swatches is fine and common.

COLOURWORK

- Many knitters work more tightly in stranded colourwork than in plain Stockinette stitch; a larger needle is recommended for colourwork. Swatch in colour patterns and plain Stockinette to determine if a larger needle is necessary.
- Be sure to hold Contrast Colour dominant. For more information about colour dominance and other colourwork tips, check out this blog post: [Tutorial: 7 Tips to Improve Your Colourwork](#)
- Regularly pause to spread out the stitches on your right needle (the ones you just finished knitting) to keep your strands the right length to smoothly fall on the wrong side of the work so that the right side of the fabric doesn't look bunched.
- [Tutorial: Knitting Colourwork with Two Hands](#)
- For more on colourwork, check out [AlterKnit and KnitOvation Stitch Dictionaries](#).
- Two chart versions are provided, a light Main Colour and a dark Main Colour version. Use the chart that best matches your project.

SCHEMATIC & FINISHED MEASUREMENTS



	SIZES												
FINISHED MEASUREMENTS INCHES	A	B	C	D	E	F	G	H	I	J	K	L	M
1: Chest Circumference	34.5	38	40.75	43.75	47	50	53.25	56.25	59.25	62.5	65.5	68.75	71.75
2: Neck Band Circumference	19.25	19.25	20.75	20.75	20.75	20.75	21.75	21.75	21.75	21.75	22.25	22.25	22.25
3: Waist Circumference	33	36.5	39.25	42.25	45.5	48.5	51.5	54.75	57.75	61	64	67	70.25
4: Sleeve Cuff Circumference	6.75	6.75	6.75	7.25	7.25	7.5	7.5	8	8	8.5	8.5	8.75	8.75
5: Sleeve Upper Arm Circumference	13.75	14.25	15.25	17.25	18.75	19.75	20.5	21.5	22	23	23.5	24	24.5
6: Front Yoke Depth	8.5	8.5	8.5	8.5	8.5	8.5	8.75	8.75	9	9.25	9.5	9.75	10
7: Sleeve Length (cuff to underarm)	18	18	18	18	17.5	17.5	17.5	17.5	17	17	17	17	16.5
8: Body Length (hem to underarm)	12.75	12.75	12.75	12.75	12.75	12.75	12.75	12.75	12.75	12.75	12.75	12.75	12.75
ESTIMATED TOTAL YARN IN YARDS	1540	1697	1819	1953	2099	2233	2378	2512	2646	2791	2925	3070	3204
ESTIMATED MC YARN IN YARDS	1309	1442	1546	1660	1784	1898	2021	2135	2249	2372	2486	2609	2723
ESTIMATED CC YARN IN YARDS	231	255	273	293	315	335	357	377	397	419	439	461	481

	SIZES												
FINISHED MEASUREMENTS CM	A	B	C	D	E	F	G	H	I	J	K	L	M
1: Chest Circumference	87.5	97	103.5	111	119.5	127	135.5	143	150.5	159	166.5	174.5	182
2: Neck Band Circumference	49	49	52.5	52.5	52.5	52.5	55	55	55	55	56.5	56.5	56.5
3: Waist Circumference	84	93	99.5	107.5	115.5	123	131	139	146.5	155	162.5	170	178.5
4: Sleeve Cuff Circumference	17	17	17	18.5	18.5	19	19	20.5	20.5	21.5	21.5	22	22
5: Sleeve Upper Arm Circumference	35	36	38.5	44	47.5	50	52	54.5	56	58.5	59.5	61	62
6: Front Yoke Depth	21.5	21.5	21.5	21.5	21.5	21.5	22	22	23	23.5	24	25	25.5
7: Sleeve Length (cuff to underarm)	45.5	45.5	45.5	45.5	44.5	44.5	44.5	44.5	43	43	43	43	42
8: Body Length (hem to underarm)	32.5	32.5	32.5	32.5	32.5	32.5	32.5	32.5	32.5	32.5	32.5	32.5	32.5
ESTIMATED TOTAL YARN IN METERS	1408	1552	1663	1786	1919	2042	2174	2297	2420	2552	2675	2807	2930
ESTIMATED MC YARN IN METERS	1197	1319	1414	1518	1631	1736	1848	1952	2056	2169	2273	2386	2490
ESTIMATED CC YARN IN METERS	211	233	250	268	288	306	326	345	363	383	401	422	440

INSTRUCTIONS

YOKE

Neck

With middle-sized 16 in/40 cm needle and MC, CO150 (150, 160, 160, 160) [**160, 168, 168, 168**] (168, 172, 172, 172) sts. Place m and join for working in the round. Beginning of round is at centre Back.

Knit 1 round.

Shape Back Neck

Use German short rows to add length to the Back Neck, allowing the neckline to be lower in the front than in the back and giving a more comfortable front neck.

Setup Row 1 (RS): K50 (50, 53, 53, 53) [**53, 56, 56, 56**] (56, 57, 57, 57), turn

Setup Row 2 (WS): Yo, sl 1 purlwise with yarn in front (slipped stitch and yo together make ds – double stitch), purl to BOR m, sl m, p50 (50, 53, 53, 53) [**53, 56, 56, 56**] (56, 57, 57, 57), turn

Short Row 1 (RS): Yo, sl 1 purlwise with yarn in back, knit to 4 sts before ds (past BOR m), turn

Short Row 2 (WS): Yo, sl 1 purlwise with yarn in front, purl to 4 sts before ds (past BOR m), turn

Repeat Short Rows 1-2 three more times.

Resolve DS's

To finish the short row section, ds's must be resolved so there aren't holes at the turning points. There are two sections of ds's that must be resolved in two different ways.

The first section is those clustered after the BOR marker (the right Back as worn) and the second section is those clustered before the BOR m (the left Back as worn). These two sections are separated by a number of stitches in the Front.

To resolve the first section of ds's, knit each yo and slipped stitch together when you come to them.

To resolve the second section of ds's, knit to 1 stitch before the ds, slip next stitch knitwise with yarn in back, knit first leg of ds through the back loop, pass the slipped stitch over, knit next leg of ds through the back loop.

Finish Short Rows (RS): Yo, sl 1 purlwise with yarn in back, *knit to ds, resolve ds, repeat from * for all ds's (working past BOR), knit to end

Shape Yoke

Switch to longer, middle-sized circular needle when working on 16 in/40 cm needle is no longer comfortable. If a "–" is present for your size, skip that instruction.

Increase 36 (46, 50, 60, 70) [**80, 86, 96, 106**] (116, 114, 124, 134) sts evenly in next round. Use the following instructions for even increases:

Inc Rnd 1: [K4 (3, 3, 2, 2) [**2, 1, 1, 1**] (1, 1, 1, 1), LLI] 15 (17, 20, 10, 25) [**80, 2, 12, 22**] (32, 28, 38, 48) times,

[k5 (4, 4, 3, 3) [–, **2, 2, 2**] (2, 2, 2, 2), LLI] 3 (6, 5, 20, 10) [–, **41, 36, 31**] (26, 29, 24, 19) times,

[k4 (3, 3, 2, 2) [–, **1, 1, 1**] (1, 1, 1, 1), LLI] 15 (17, 20, 10, 25) [–, **2, 12, 22**] (32, 28, 38, 48) times,

[k5 (4, 4, 3, 3) [–, **2, 2, 2**] (2, 2, 2, 2), LLI] 3 (6, 5, 20, 10) [–, **41, 36, 31**] (26, 29, 24, 19) times

– 186 (196, 210, 220, 230) [**240, 254, 264, 274**] (284, 286, 296, 306) sts

Knit 1 round.

Inc Rnd 2: [K5 (4, 4, 3, 3) [**3, 2, 2, 2**] (2, 2, 2, 2), LLI] 9 (12, 20, 10, 25) [**80, 2, 12, 22**] (32, 28, 38, 48) times,

[k6 (5, 5, 4, 4) [–, **3, 3, 3**] (3, 3, 3, 3), LLI] 8 (10, 5, 20, 10) [–, **41, 36, 31**] (26, 29, 24, 19) times,

[k5 (4, 4, 3, 3) [–, **2, 2, 2**] (2, 2, 2, 2), LLI] 9 (12, 20, 10, 25) [–, **2, 12, 22**] (32, 28, 38, 48) times,

[k6 (5, 5, 4, 4) [–, **3, 3, 3**] (3, 3, 3, 3), LLI] 8 (10, 5, 20, 10) [–, **41, 36, 31**] (26, 29, 24, 19) times

– 220 (240, 260, 280, 300) [**320, 340, 360, 380**] (400, 400, 420, 440) sts

Knit 1 round.

Colourwork Yoke Section

Switch to larger needle over colourwork rounds if necessary to maintain gauge.

With Main Colour and Contrast Colour, work Colourwork Chart Rnds 1-70. Pattern is worked 11 (12, 13, 14, 15) [**16, 17, 18, 19**] (20, 20, 21, 22) times around yoke.

Two versions of chart are given, a light MC one and a dark MC one. Use the colour scheme that best matches your project.

– *When all chart rounds have been completed,*
396 (432, 468, 504, 540) [**576, 612, 648, 684**]
(720, 720, 756, 792) sts are present.

After completing all chart rounds, cut Contrast Colour, leaving a 6 in/15 cm tail. Switch back to middle-sized, longer needle if necessary to maintain gauge. The rest of the project is worked in MC.

Knit 1 round.

If a “–” is present for your size, skip that instruction.

Increase 12 (10, 4, 16, 20) [**16, 12, 8, 4**]
(–, 32, 20, 16) sts evenly in next round. Use the following instructions for evenly spaced increases:

Inc Rnd: [K33 (43, 117, 31, 27) [**36, 51, 81, 171**]
(–, 22, 37, 49), LLI]
12 (4, 4, 4, 20) [**16, 12, 8, 4**] (–, 8, 2, 4) times,

[k– (44, –, 32, –) [–, –, –, –] (–, 23, 38, 50), LLI]
– (1, –, 4, –) [–, –, –, –] (–, 8, 8, 4) time(s),

[k– (43, –, 31, –) [–, –, –, –] (–, 22, 37, 49), LLI]
– (4, –, 4, –) [–, –, –, –] (–, 8, 2, 4) times,

[k– (44, –, 32, –) [–, –, –, –] (–, 23, 38, 50), LLI]
– (1, –, 4, –) [–, –, –, –] (–, 8, 8, 4) time(s)

– 408 (442, 472, 520, 560) [**592, 624, 656, 688**]
(720, 752, 776, 808) sts

Knit every round until yoke depth measures about 8.5 (8.5, 8.5, 8.5, 8.5) [**8.5, 8.75, 8.75, 9**] (9.25, 9.5, 9.75, 10) in/
21.5 (21.5, 21.5, 21.5, 21.5) [**21.5, 22, 22, 23**] (23.5, 24, 25, 25.5) cm along centre Front, measured from CO, or to desired Yoke depth.

At pattern gauge, smallest sizes are already at this Yoke depth.

Centre Front is directly opposite the BOR marker, which indicates the centre Back. Measure at the centre Front instead of at the BOR marker to avoid counting the short row shaping that increases the depth at the back neck.

Fit Tip:

For a perfect fit, try on before working the plain Stockinette section to determine how many more rounds to work. The Yoke should end just below your underarm to get the look in the photos. After working a few inches of the Body, try on again to be sure the underarm placement is comfortable and looks how you want. For a more accurate look, steam your work-in-progress before trying on or checking gauge.

Divide for Body & Sleeves

Dividing Rnd: K58 (65, 69, 74, 79) [**84, 90, 95, 101**]
(106, 112, 117, 123) sts for right half of Back (as worn),

place next 88 (92, 98, 112, 122) [**128, 132, 138, 142**]
(148, 152, 154, 158) sts on waste yarn for right Sleeve,

CO9 (9, 10, 11, 12) [**13, 13, 14, 14**] (15, 15, 16, 16)
sts using backward loop method for first half of underarm, place m, CO9 (9, 10, 11, 12)
[**13, 13, 14, 14**] (15, 15, 16, 16) sts for second half of underarm,

k116 (129, 138, 148, 158) [**168, 180, 190, 202**]
(212, 224, 234, 246) sts for Front,

place next 88 (92, 98, 112, 122) [**128, 132, 138, 142**]
(148, 152, 154, 158) sts on waste yarn for left Sleeve,

CO9 (9, 10, 11, 12) [**13, 13, 14, 14**] (15, 15, 16, 16)
sts using backward loop method for first half of underarm, place m, CO9 (9, 10, 11, 12)
[**13, 13, 14, 14**] (15, 15, 16, 16) sts for second half of underarm,

k58 (64, 69, 74, 79) [**84, 90, 95, 101**]
(106, 112, 117, 123) sts for left Back

– 268 (294, 316, 340, 364) [**388, 412, 436, 460**]
(484, 508, 532, 556) Body sts

BODY

Three markers are now present. Markers added during the dividing round indicate the centre point of each underarm. Body shaping will be done on either side of these markers. BOR m is still at the centre Back.

Knit 11 rounds.

Dec Rnd: *Knit to 3 sts before m, k2tog, k1, sl m, k1, ssk; repeat from * once more, knit to end

– 264 (290, 312, 336, 360) **[384, 408, 432, 456]**
(480, 504, 528, 552) sts remain

Repeat Dec Rnd every 10th round twice more, for a total of 3 Decrease Rounds.

– 256 (282, 304, 328, 352) **[376, 400, 424, 448]**
(472, 496, 520, 544) sts remain after all decrease rounds are complete.

Knit 17 rounds.

Inc Rnd: *Knit to 1 st before m, RLI, k1, sl m, k1, LLI; repeat from * once more, knit to end

– 260 (286, 308, 332, 356) **[380, 404, 428, 452]**
(476, 500, 524, 548) sts

Repeat Inc Rnd every 18th round twice more, for a total of 3 Increase Rounds.

– 268 (294, 316, 340, 364) **[388, 412, 436, 460]**
(484, 508, 532, 556) sts

Knit every round until Body measures about 10.25 in/ 26 cm from underarm or to about 2.5 in/6.5 cm less than total desired Body length.

Hem

Switch to smallest 32 in/80 cm or longer circular needle.

Ribbing Rnd: *K1, p1; repeat from * to end

Repeat Ribbing Rnd until Ribbed Hem measures about 2.25 in/6 cm. Body measures about 12.5 in/ 32 cm from underarm.

Tubular Bind-off

Rnd 1: [K1, slip 1 purlwise with yarn in front] to end

Rnd 2: [Slip 1 purlwise with yarn in back, p1] to end

Work Rnd 1 once more.

All knit stitches will now be moved to one needle, while all purl stitches will be moved to another needle. The knits and purls will then be grafted together, creating the tubular bound-off edge. During this section, the stitches will be slipped, not worked, so leave the working yarn aside for now.

Step 1: Slip next stitch (a knit stitch) purlwise onto spare 32 in/80 cm or longer circular needle in the smallest size, and hold to front.

Step 2: Slip next stitch (a purl stitch) onto the needle you've been using to work ribbing pattern and hold to back.

Repeat Steps 1-2 until all knit stitches are on one needle (in front) and all purl stitches are on the second needle (in back).

Cut yarn, leaving a tail about three times as long as the length of the whole Hem. Graft stitches from front needle to stitches from back needle.

SLEEVES

Place 88 (92, 98, 112, 122) **[128, 132, 138, 142]** (148, 152, 154, 158) live Sleeve sts from waste yarn on middle-sized needle for small-circumference knitting. Join MC yarn and knit to end.

Pick up and knit 9 (9, 10, 11, 12) **[13, 13, 14, 14]** (15, 15, 16, 16) underarm sts, place m for BOR, pick up and knit 9 (9, 10, 11, 12) **[13, 13, 14, 14]** (15, 15, 16, 16) underarm sts. Join for working in the round, knit to end of round.

– 106 (110, 118, 134, 146) **[154, 158, 166, 170]**
(178, 182, 186, 190) sts

Shape Sleeve

Knit 7 (7, 5, 5, 3) **[3, 3, 3, 3]** (3, 3, 3, 3) rounds.

Dec Rnd: K1, ssk, knit to 3 sts before m, k2tog, k1
– 2 sts decreased; 104 (108, 116, 132, 144)
[152, 156, 164, 168] (176, 180, 184, 188) sts
remain after first decrease

Work Dec Rnd every 8th (8th, 6th, 6th, 4th) [4th, 4th, 4th, 4th] (4th, 4th, 4th, 4th) round
8 (2, 17, 5, 29) **[27, 25, 23, 19]** (17, 15, 15, 11) times.

– 88 (104, 82, 122, 86) **[98, 106, 118, 130]**
(142, 150, 154, 166) sts remain

Work Decrease Rnd every 6th (6th, 4th, 4th, 2nd)
[2nd, 2nd, 2nd, 2nd] (2nd, 2nd, 2nd, 2nd) round
12 (20, 9, 27, 9) **[13, 17, 21, 27]** (31, 35, 35, 41) times.

– 64 (64, 64, 68, 68) **[72, 72, 76, 76]**
(80, 80, 84, 84) sts remain

Knit every round until Sleeve measures about 15.5
(15.5, 15.5, 15.5, 15) **[15, 15, 15, 14.5]**
(14.5, 14.5, 14.5, 14) in/
39.5 (39.5, 39.5, 39.5, 38) **[38, 38, 38, 37]**
(37, 37, 37, 35.5) cm or to about 2.5 in/6.5 cm less
than total desired Sleeve length.

Cuff

Switch to smallest needles for small-circumference
knitting.

Ribbing Rnd: *K1, p1; repeat from * to end

Repeat Ribbing Rnd until cuff measures 2.25 in/6 cm.

Work tubular bind-off as for Hem.

FINISHING

Neck Band

With smallest, shorter needle and MC, pick up and
knit 150 (150, 160, 160, 160) **[160, 168, 168, 168]**
(168, 172, 172, 172) sts along CO edge, starting
at centre Back. Place m and join for working in the
round.

Ribbing Rnd: *K1, p1; repeat from * to end

Repeat Ribbing Rnd until Neck Band measures about
1 in/2.5 cm.

Work Tubular bind-off as for Hem and Cuffs.

Final Finishing

Weave in all ends on WS using duplicate stitch. Wet
block to measurements on the schematic. After the
sweater is dry, use a steamer to steam out creases
along the outside of Sleeves and Body sides.

ABBREVIATIONS

BOR	beginning of round
CC	contrast colour
CO	cast on
dec	decrease
DPN(s)	double pointed needle(s)
ds	double stitch (used in short row shaping)
inc	increase
k	knit
k2tog	knit 2 together – 1 st decreased
LLI	left lifted increase: knit into the st 2 rows below the previous st – 1 st increased
m	marker
MC	main colour
p	purl
rep	repeat
RLI	right lifted increase: knit into the st immediately below the next st – 1 st increased
rnd(s)	round(s)
RS	right side
sl	slip
ssk	slip, slip, knit (left-leaning single decrease): slip 2 sts one at a time as if to knit, insert left needle into front of stitches, knit stitches together through back loops without twisting – 1 st decreased
st(s)	stitch(es)
St st	Stockinette stitch (knit on RS rows, purl on WS rows)
WS	wrong side
yo	yarn over – 1 st increased

share

#CATKNITPULLOVER

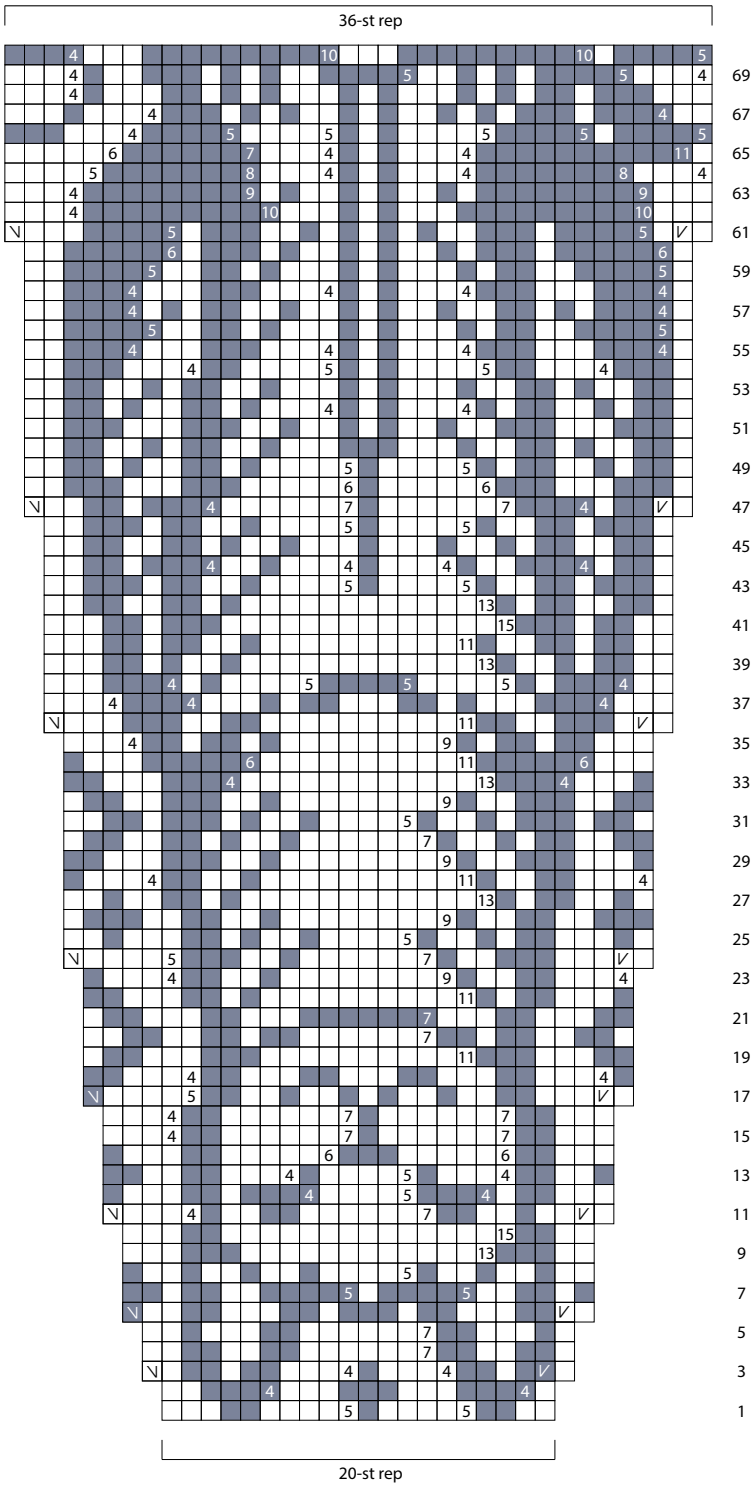
#ANDREARANGELKNITS

@ANDREARANGELKNITS

LIGHT MC CHART

Use this chart if your Main Colour is light and Contrast Colour is dark. Read chart from right to left every round.

A number in a box indicates how many stitches will be worked in that colour. Numbers are only present when the number of stitches is 4 or greater. The reason to include these numbers is to speed up chart reading so you don't have to count exact numbers of stitches.



KEY

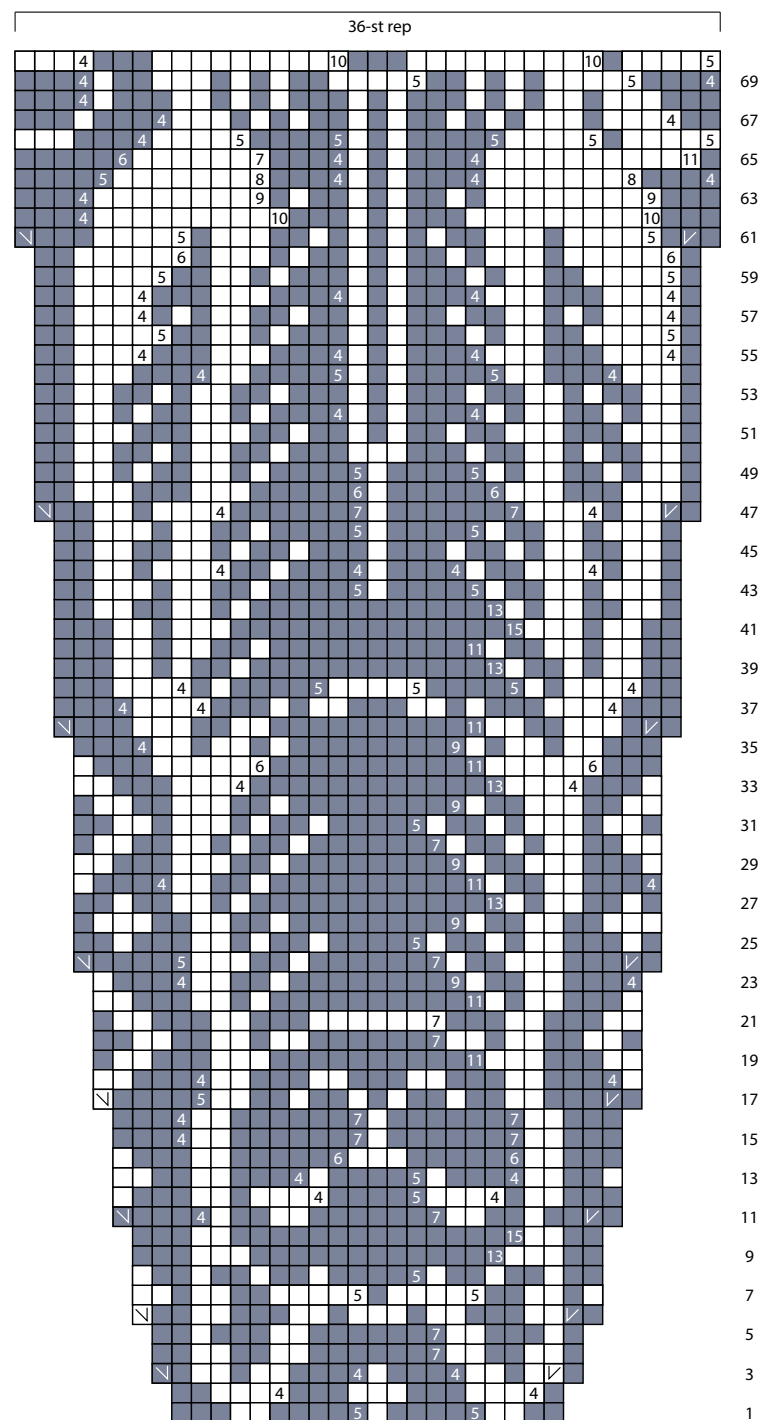
- knit MC
- ◻ RLI MC
- ◻ RLI CC
- knit CC
- ◻ LLI MC
- ◻ LLI CC

*See chart instructions for explanation of numbers in boxes.

DARK MC CHART

Use this chart if your Main Colour is dark and Contrast Colour is light. Read chart from right to left every round.

A number in a box indicates how many stitches will be worked in that colour. Numbers are only present when the number of stitches is 4 or greater. The reason to include these numbers is to speed up chart reading so you don't have to count exact numbers of stitches.



KEY

■ knit MC	✓ RLI MC	✓ RLI CC
□ knit CC	⌞ LLI MC	⌞ LLI CC

*See chart instructions for explanation of numbers in boxes.

KEEP IN TOUCH

NEWSLETTER

[Sign up for my email newsletter](#) to be the first to hear about new patterns, sales, and events!

SUPPORT

For pattern support, questions, and wholesale information, email andrea@andrearangel.com | andrearangel.com

SHARE

Don't forget to share your project with [#CatKnitPullover](#) and to add your project to Ravelry so other knitters can admire your work!

ENJOYING COLOURWORK?

Have a look at my colourwork stitch dictionaries, *AlterKnit* and *KnitOvation*!

JOIN ME ON PATREON!

Every month members get new, exclusive colourwork charts, plus a chance to vote on future motifs, along with pattern discounts. If you love my work and want to see more, [this is an easy way to support my small business](#).





ANDREA RANGEL

CatKnit Pullover © Andrea Rangel 2024

This pattern, all photographs, and the knitted design are subject to copyright laws, and are only for personal, non-commercial use. You may not sell or distribute this pattern in print or digital format.

Pattern Version 1 | Last updated December, 2024

YOU MIGHT ALSO LIKE



DISSENT



PACIFIC ARCHES



SAXE POINT



SEABLUSH



KNITTER'S DUDE



DISSENT TOQUE