

# skappel

x



*helenemoo*



**ANNY**

# ANNY

## SIZE

Small<sup>S</sup> Medium<sup>M</sup> Large<sup>L</sup>

## GARMENT'S FINISHED MEASUREMENTS (IN)

Chest, approx.	48 <sup>S</sup>	52 <sup>3/4M</sup>	56 <sup>3/4L</sup>
Total length, approx.	14 <sup>1/2S</sup>	29 <sup>1/4M</sup>	30 <sup>3/4L</sup>
Sleeve length, approx.	17 <sup>S</sup>	18 <sup>1/4M</sup>	18 <sup>1/4L</sup>

## YARN (GRAMS)

Quality: Spinnvill, 100% Norwegian lambswool. 50g = 100 meters.

Four colors:

Main color	400 <sup>S</sup>	450 <sup>M</sup>	500 <sup>L</sup>
Contrasts color 1	150 <sup>S</sup>	150 <sup>M</sup>	200 <sup>L</sup>
Contrast color 2	150 <sup>S</sup>	150 <sup>M</sup>	150 <sup>L</sup>
Contrast color 3	50 <sup>S</sup>	50 <sup>M</sup>	50 <sup>L</sup>

Or three colors:

Main color	350 <sup>S</sup>	400 <sup>M</sup>	450 <sup>L</sup>
Contrast color 1	350 <sup>S</sup>	400 <sup>M</sup>	450 <sup>L</sup>
Contrast color 2 (til ermer)	50 <sup>S</sup>	50 <sup>M</sup>	50 <sup>L</sup>

## RECCOMENDED NEEDLES

U.S 10/ 6 mm: 16 and 32 in / 40 and 80 cm circulars; set of 5 dpn,

NOTE adjust needle size to obtain correct gauge if neccessary.

## GAUGE

19 stitches in pattern = approx. 4 in / 10 cm

This knitting pattern was produced by Sister Act AS and is protected by copyright. Copying, selling, or reproducing this pattern in any format is forbidden.

Don't forget to begin by carefully reading all through the pattern, so you'll have a successful result. Good luck with your new knitting project!

## Read this before starting the project.

### What is gauge?

Gauge is a measure that shows how many stitches are present within 10 cm. Gauge determines the size of the garment. We all knit differently, and therefore have different gauges. That's why you should always knit a swatch to check your gauge, ensuring the correct outcome when knitting. Otherwise, you might end up with a garment that's an entirely different size than intended. You might also find yourself with either too much or too little yarn to complete the project. Therefore, we always recommend checking gauge before starting a knitting project.

### How to measure gauge

Gauge shows the number of stitches in width and height within a 10 x 10 cm square. To find the gauge, knit a swatch a bit larger than 10 cm, using the needles and yarn specified in the pattern. Use a measuring tape and count the number of stitches over 10 cm. Do you have too many stitches? Try a needle size larger. Do you have too few stitches? Try a needle size smaller.

### Example:

Specified gauge: 19 stitches in stockinette stitch = 10 cm.

Cast on a few more than 19 stitches, knit back and forth until you have a swatch measuring 15 x 15 cm. If, for instance, you count 20 stitches in 10 cm, you're knitting too tightly. It might not seem like much, but it can make a big difference. In that case, try using a larger needle size. A rule of thumb is that going up or down half a needle size results in approximately one stitch more or less in gauge.

### Help and guidance

If you're stuck in your project, you can watch our instructional videos (in Norwegian) [HER](#).

If you have questions about the pattern or need guidance, you can contact our customer service [HER](#). They're more than happy to help you!





### BODY (= front and back):

With longer circular U. S. 10 / 6 mm and main color 1 for 4-color model or contrast color 1 for 2-color model, cast on 234 (250, 274) stitches. Join, being careful not to twist cast-on row; place marker for beginning of round (= between end of front and beginning of back). Also, place a marker at the side = 117(125, 137) stitches for the front and the same number of stitches for the back). The markers will help you keep your place as you work and make it easier to divide for the body and sleeves later.

Work around over all the stitches in knit 1, purl 1 ribbing until piece measures approximately  $1^{1/2}$  in / 4 cm.

Now knit the pattern according to Chart A for your specific size using the following steps: Begin at the designated arrow for your chosen size and knit across the entire row of the Chart. Continue knitting entire rows of the chart (starting at route 1 regardless of the size) until all the stitches on the back have been knitted. Upon reaching the marker on the front piece, restart the process by returning to the arrow for your chosen size and knitting across the complete row of the chart. Repeat the sequence of knitting the entire rows of the Chart (starting route 1 regardless the size) and all the way through. Repeat this process until you have knitted over all of the stitches on the front.

Proceed to work Chart A in the following manner until the body measures approximately approximately  $13^{3/4}$  (17,  $17^{3/4}$ ) in / 35 (43, 45) cm.

On the next round, shape armholes: Begin shaping

armholes on the next round, as follows: Bind off 5 stitches after the beginning-of-round marker, knit until 5 stitches before next marker, bind off these 5 stitches and the 5 stitches after the marker. Knit until 5 stitches before the beginning-of-round marker and bind off those 5 stitches = 20 stitches bound off (10 stitches on each side).

Set body aside while you knit the sleeves.

### SLEEVE

With dpn U. S. Size 10 / 6 mm and main color for 4-color model or contrast color 1 for 2-color model, cast on 54 (58, 62) stitches. Divide stitches over 4 dpn and join. Place marker for beginning of round between the first and last stitch of sleeve. Work around over all the stitches in knit 1, purl 1 ribbing until cuff measures approximately  $1^{1/4}$  in / 4 cm.

Knit 1 round, and, at the same time, increase 1 (1, 1) stitch: Make 1 (lift strand between two stitches onto left needle, knit strand into back loop to twist it) = 55 (59, 63) stitches.

Change to 16 in/ 40 circular once there are enough stitches to go around. Place marker for beginning of round

Work Pattern B.

**NOTE!** For the 2-color model: Rounds 1-20 are worked with contrast color 32 as the pattern color. Rnd 22 is worked with the main color. Round 24 is worked with contrast color 3.



Continue with pattern B, increasing on every 5th round: Knit 1 stitch after beginning-of-round marker, increase 1 stitch as for make 1 above. Knit until 1 stitch remains on round and increase 1 stitch the same way. Repeat until you have increased a total of 5 times.

After Pattern B, continue with Pattern A until the sleeves measures approximately 43 (46, 46) cm.

Now shape underarm: Bind off the first 5 stitches after the beginning-of-round marker, knit to last 5 stitches and then bind off those 5 stitches (= 10 stitches bound off for underarm).

Set sleeve aside while you make the second sleeve the same way.

## YOKE

Move all the stitches to long circular so the body and sleeves align. You should now have 324 (348, 380) stitches total on the needle. Now you can begin the raglan shaping. Place a beginning-of-round marker in the space between the right sleeve and the back to indicate the beginning of the round. Place different color markers at each of the other intersections of body and sleeve.

## RAGLAN SHAPING

Work and shape following Pattern A as follows:

**Raglan Round 1:** Slip beginning-of-round marker. Knit 2 stitches together through back loops. Knit until 2 sts before next marker, knit 2 stitches together. Knit

2 stitches together through back loops. Knit until 2 sts before next marker, knit 2 stitches together. Knit 2 stitches together through back loops. Knit until 2 sts before next marker, knit 2 stitches together. Knit 2 stitches together through back loops. Knit until 2 sts before beginning-of-round marker, knit 2 stitches together. = 8 stitches decreased on round.

**Raglan Round 2:** Knit 1 round without decreasing.

Repeat Raglan Rounds 1-2, (= decreasing on every other round) 22 (24, 26) times.

## NECK SHAPING

From this point on, work back and forth. It is important that you end with a round with raglan decreases because the next round is worked on the wrong side and should not have any decreases.

Begin at beginning-of-round marker, knit and work raglan decreases, but place the center 28 (28, 32) stitches on front on a holder for the neck. Continue as established to beginning-of-round marker and then cut yarn. Slip all the stitches after the beginning-of-round marker up to the stitches on holder over to right needle without knitting them.

Now begin neck shaping.

Turn work so the wrong side faces you, and purl across. Turn work and begin shaping neckline. Bind off the first 4 stitches, knit remaining stitches, also working raglan decreases as before. Turn work. Bind off the first 4 stitches and purl to end of row.

Continue, binding off 2-2-2-2 (3-3-2-2; 4-4-3-2-2) stitches at neck on each side (= at beginning of each row). Shape neckline and raglan as explained above until you've decreased 27 (29, 31) times for raglan.

Bind off all remaining stitches.

## NECK BAND

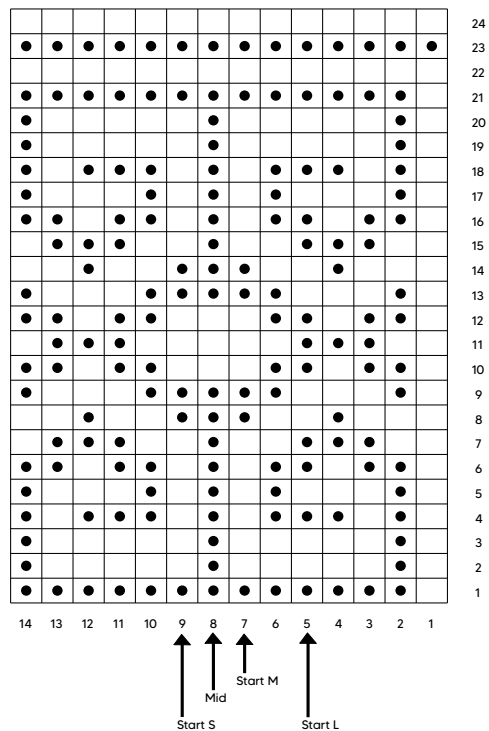
Beginning at one shoulder, with short U. S. 10 / 6 mm circular, pick up and knit approximately 90 (96, 100) stitches around neck (including stitches you bound off for neck). The stitch count must be a multiple of 2. Knit 1 round with contrast color 1, 1 round with main color, and 1 round contrast color 3. Change to main color.

Work around in knit 1, purl 1 ribbing until neckband measures approximately  $4\frac{3}{4}$  in / 12 cm.

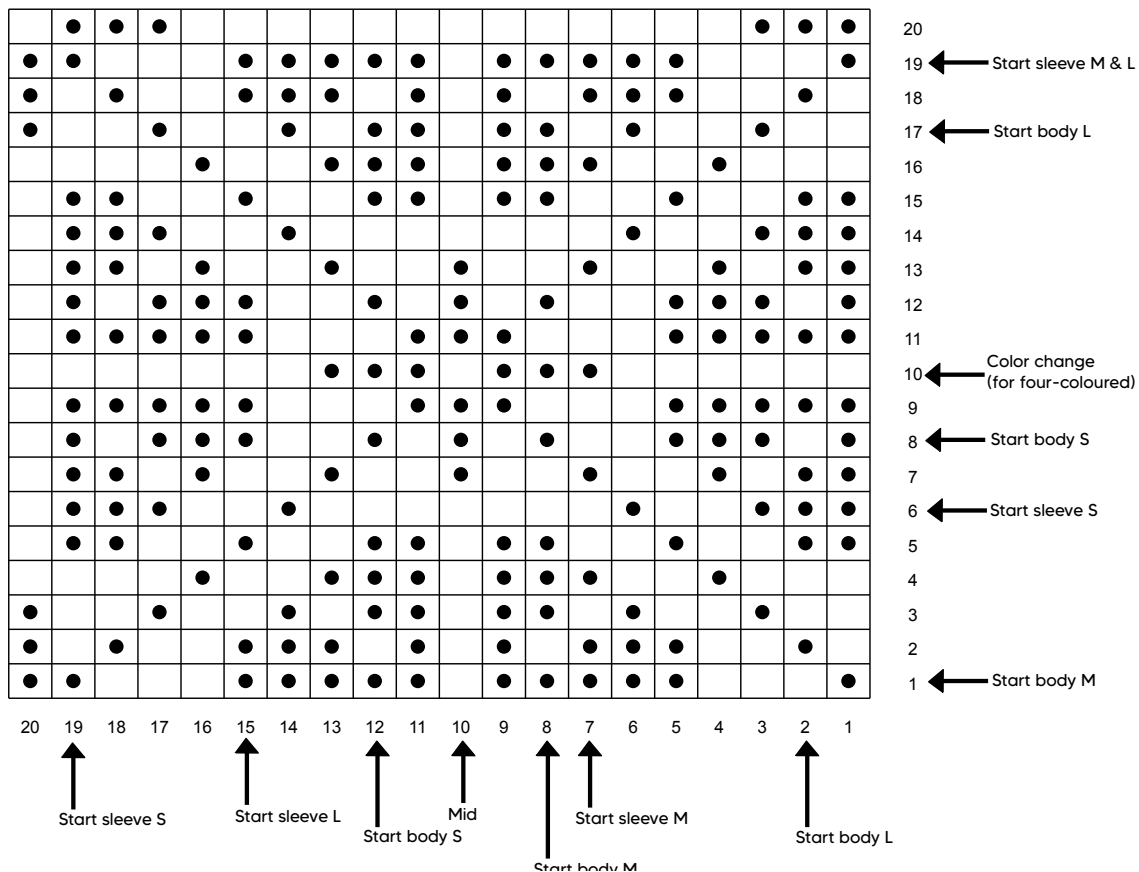
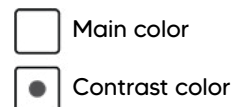
Bind off in ribbing.

Seam underarms. Weave in all ends neatly on wrong side.

## PATTERN B



## PATTERN A





## DAYDREAM

Since I started my outdoor journey soon to be 10 years ago my first choice in clothing has always been wool, and layers of it. I don't come from a typical outdoorsy family, and I didn't have much equipment when I first started out. So I started digging in my grandmas closet at the family cabin and found her old, colorful sweaters from the 80s that I immediately feel in love with. They quickly became my staple pieces in own closet and I started collecting my own vintage sweaters.

Fast forward till today I can finally present my second collection of my own sweaters!! \*pinch me someone\* Three beautiful designs in collaborations with the knitting wizard @dortheskappel and her family company.

The sweaters are named after my grandmothers and great-grandmothers, Ester, Anny, and Dagny. The patterns represent a timeless design inspired by the vintage sweaters I've loved and worn for 10 years. The colors are inspired by the cotton candy skies of the Norwegian winter. I really hope these wool gems can stick around for generations and be worn on many adventures near and far. We've also made patterns for mittens, socks and a balaclava. The perfect add-ons to keep you warm and cozy from top till toe.

I'm so happy to say that the patterns are available for purchase worldwide. Gosh I'm so excited for this!

-Helene

Trenger du hjelp, se våre instruksjons-  
videoer på [skappeloslo.com](https://skappeloslo.com)

Foto: Andreas Hem  
Grafisk design: Noe AS  
Design: Dorthe Skappel

sk  
ap  
pel



