

BOREAS SWEATER



Designed by Karoline Skovgaard Bentsen

BOREAS SWEATER

In Greek mythology, 'Boreas' (/ˌbɔːri.əs/) is known as the god of the north wind. The sweater is inspired by the sweater silhouettes of the 90s, which often took inspiration from 'work-wear' and the more masculine constructions. This can be seen, for example, on the neck, which is inspired by polo collars, but without the entire collar, to preserve the feminine expression. Boreas has a relaxed and boxy fit, where the construction of the neck allows you to play with the styling, depending on how open you want to use the neck.

CONSTRUCTION

First, the back is knitted back and forth, where cables and box stitches are established. Then you pick up for the left shoulder/front piece, which is knitted separately, this also applies to the right shoulder/front piece, before joining the body. You then continue in the round until the desired length. Stitches are picked up for the sleeves which are knitted in Box stitch.

LEVEL OF DIFFICULTY

Medium to difficult.

SIZES

1 (2) 3 (4)

Finished Chest Circumference: 120 (128) 136 (145) cm / 47.2 (50.3) 53.5 (57) “

Length on the back, incl. rib: 56 (58) 60 (61) cm / 22 (22.8) 23.6 (24) “

Length on the sleeves approx.: 32 (32) 33 (33) cm / 12.5 (12.5) 13 (13) “

FIT

Recommended ease: minimum 10-15 cm / 4 - 5.9 “ of positive ease.

The model in the picture has a chest circumference of 79 cm / 32 “and is wearing a size 1 with 41 cm / 16 “ of positive ease.

YARN

1 strand Lamauld from Camarose Yarn, 50g/100m
15 (16) 17 (18) balls / 750 (800) 850 (900) g (50% Llama 50% Peruvian Highland wool)

OR

1 strand Pura Lana from Gepard Garn (50% alpaca, 50% uld, 50g / 115m) 15 (16) 17 (18) balls / 750 (800) 850 (900) g

Note: be aware that yarn consumption is always an estimate as knitting tension and elasticity etc. can have an influence on consumption. If more length is desired than those specified, more yarn must be calculated.

GAUGE

Box st:

20 st x 30 row = 10 x 10 cm in box st on 4.5mm needle before washing and blocking.

18 st x 28 row = 10 x 10 cm in box st on 4.5mm needle after washing and blocking.

Cables:

20 st x 30 row = 7 x 10 cm for CABLE 3 on 4.5mm needle after washing

20 st x 32 row = 6 x 10 cm for CABLE 2 on 4.5mm needle after washing

NEEDLES

Circular needles 3 mm / US 4 (40, 60 or 80-100 cm / 16, 24 and 32”)







Circular needles 4.5 mm / US 7 (40, 60 or 80-100 cm / 16, 24 and 32”)

Cable needle US 7.

Notions: Stitch markers, stitch markers, or waste yarn.

ABBREVIATIONS / LEGEND

Cbn	Cable needle
K, k	knit
P, p	purl
rep	repeat
Rnd(s)	round(s)
Row(s)	row(s)
st(s)	stitch(es)
BOR	Beginning Of Round
M, m	marker
Pm	place marker
Sm	slip marker
K2tog	Knit 2 stitches together, 1 st decreased
K tbl	knit through back loop
P tbl	purl through back loop
LH/RH	Left Hand / Right Hand
BO	Bind Off
P2tog	
Wyif	with yarn in the front
Wyib	with yarn in the back

	No stitch
	RS:knit WS:purl
	RS:purl WS:knit
	Backward loop cast on
	Knit cast on at the start of the row
	Edge stitch (ES) / selvedge st



1/1 LC place 1st on a cbn and leave in the front, knit 1st from LHN then knit 1 st rom cbn.



1/1 RC place 1 st on a cbn and leave in the back, knit 1st from LHN then knit 1st from cbn.



1/3 RPC place 1 st on a cbn and leave in the back, knit 3 st from LHN then purl 1 sts from cbn.



1/3 LPC place 3 sts on cbn and leave in front, purl 1 st from LHN then knit 3 sts from cbn



3/3 RC place 3 sts on a cbn and leave in the back, knit 3 sts from LHN then knit 3 sts from cbn



3/3 LC place 3 sts on a cbn and leave in the front, knit 3 sts from LHN then knit 3 sts from cbn



5/5 RC place 5 sts on a cbn and leave in the back, knit 5 sts from LHN then knit 5 sts from cbn.



5/5 LC place 5 sts on a cbn and leave in the front, knit 5 sts from LHN, then knit 5 sts from cbn.

BOX ST

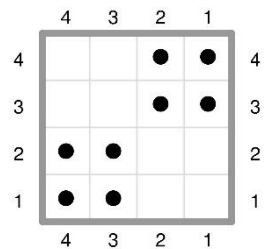
work flat

← **Row 1 (RS):** k2, p2

→ **Row 2 (WS):** k2, p2

← **Row 3 (RS):** p2, k2

→ **Row 4 (WS):** p2, k2



work in the round

Row 1, 2: k2, p2

Row 3, 4: p2, k2

CABLE 1

work flat

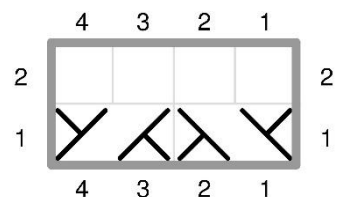
← **Row 1 (RS):** (1/1 LC), (1/1 RC)

→ **Row 2 (WS):** p4

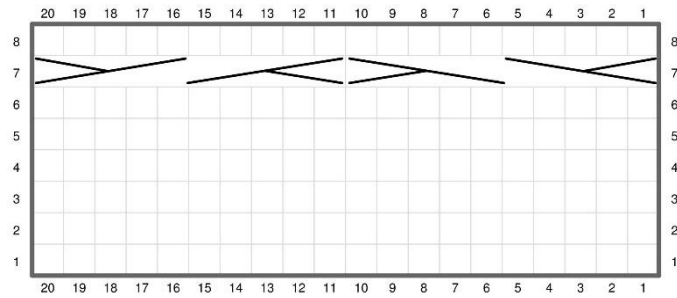
work in the round

Row 1: (1/1 LC), (1/1 RC)

Row 2: k4



CABLE 2



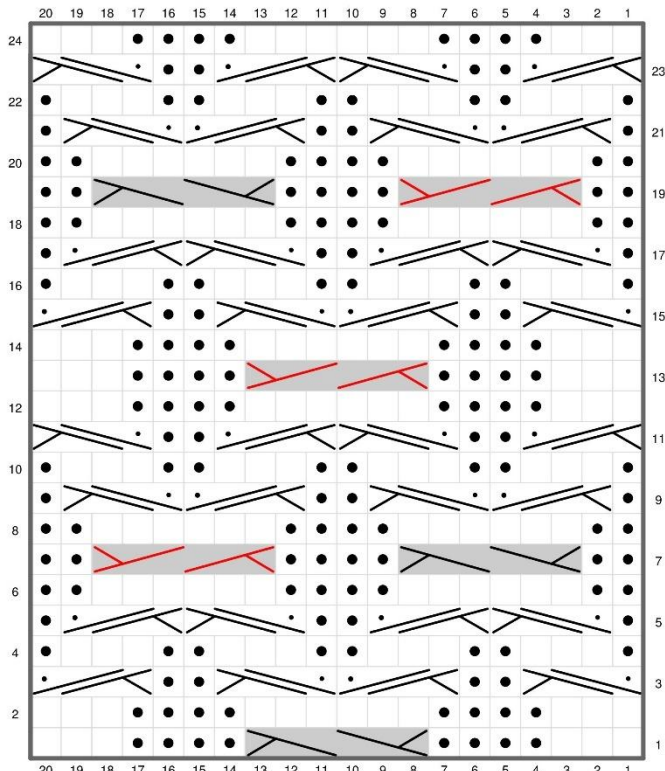
work flat

← Row 1, 3, 5 (RS): k20
 → Row 2, 4, 6, 8 (WS): p20
 ← Row 7 (RS): (5/5 LC), (5/5 RC)

work in the round

Row 1-6, 8: k20
 Row 7: (5/5 LC), (5/5 RC)

CABLE 3



work flat

← Row 1 (RS): k3, p4, (3/3 LC), p4, k3
 → Row 2 (WS): p3, k4, p6, k4, p3
 ← Row 3 (RS): (1/3 LPC), p2, (1/3 RPC), (1/3 LPC), p2, (1/3 RPC)
 → Row 4 (WS): k1, p3, k2, p3, k2, p3, k2, p3, k1
 ← Row 5 (RS): p1, (1/3 LPC), (1/3 RPC), p2, (1/3 LPC), (1/3 RPC), p1
 → Row 6 (WS): k2, p6, k4, p6, k2

← Row 7 (RS): p2, (3/3 LC), p4, (3/3 RC), p2
 → Row 8 (WS): k2, p6, k4, p6, k2
 ← Row 9 (RS): p1, (1/3 RPC), (1/3 LPC), p2, (1/3 RPC), (1/3 LPC), p1
 → Row 10 (WS): k1, p3, k2, p3, k2, p3, k2, p3, k1
 ← Row 11 (RS): (1/3 RPC), p2, (1/3 LPC), (1/3 RPC), p2, (1/3 LPC)
 → Row 12 (WS): p3, k4, k6, k4, p3
 ← Row 13 (RS): k3, p4, (3/3 RC), p4, k3
 → Row 14 (WS): p3, k4, p6, k4, p3
 ← Row 15 (RS): (1/3 LPC), p2, (1/3 RPC), (1/3 LPC), p2, (1/3 RPC)
 → Row 16 (WS): k1, p3, k2, p3, k2, p3, k2, p3, k1
 ← Row 17 (RS): p1, (1/3 LPC), (1/3 RPC), p2, (1/3 LPC), (1/3 RPC), p1
 → Row 18 (WS): k2, p6, k4, p6, k2
 ← Row 19 (RS): p2, (3/3 RC), p4, (3/3 LC), p2
 → Row 20 (WS): k2, p6, k4, p6, k2
 ← Row 21 (RS): p1, (1/3 RPC), (1/3 LPC), p2, (1/3 RPC), (1/3 LPC), p1
 → Row 22 (WS): k1, p3, k2, p3, k2, p3, k2, p3, k1
 ← Row 23 (RS): (1/3 RPC), p2, (1/3 LPC), (1/3 RPC), p2, (1/3 LPC)
 → Row 24 (WS): p3, k4, p6, k4, p3

work in the round

Row 1: k3, p4, (3/3 LC), p4, k3
 Row 2: k3, p4, k6, p4, k3
 Row 3: (1/3 LPC), p2, (1/3 RPC), (1/3 LPC), p2, (1/3 RPC)
 Row 4: p1, k3, p2, k3, p2, k3, p2, k3, p1
 Row 5: p1, (1/3 LPC), (1/3 RPC), p2, (1/3 LPC), (1/3 RPC), p1
 Row 6: p2, k6, p4, k6, p2
 Row 7: p2, (3/3 LC), p4, (3/3 RC), p2
 Row 8: p2, k6, p4, k6, p2
 Row 9: p1, (1/3 RPC), (1/3 LPC), p2, (1/3 RPC), (1/3 LPC), p1
 Row 10: p1, k3, p2, k3, p2, k3, p2, k3, p1
 Row 11: (1/3 RPC), p2, (1/3 LPC), (1/3 RPC), p2, (1/3 LPC)
 Row 12: k3, p4, k6, p4, k3
 Row 13: k3, p4, (3/3 RC), p4, k3
 Row 14: k3, p4, k6, p4, k3
 Row 15: (1/3 LPC), p2, (1/3 RPC), (1/3 LPC), p2, (1/3 RPC)
 Row 16: p1, k3, p2, k3, p2, k3, p2, k3, p1
 Row 17: p1, (1/3 LPC), (1/3 RPC), p2, (1/3 LPC), (1/3 RPC), p1

Row 18: p2, k6, p4, k6, p2

Row 19: p2, (3/3 RC), p4, (3/3 LC), p2

Row 20: p2, k6, p4, k6, p2

Row 21: p1, (1/3 RPC), (1/3 LPC), p2, (1/3 RPC), (1/3 LPC), p1

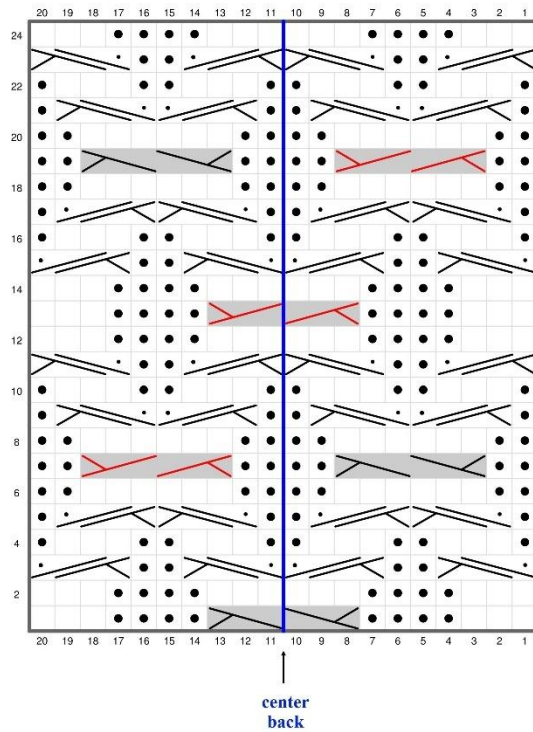
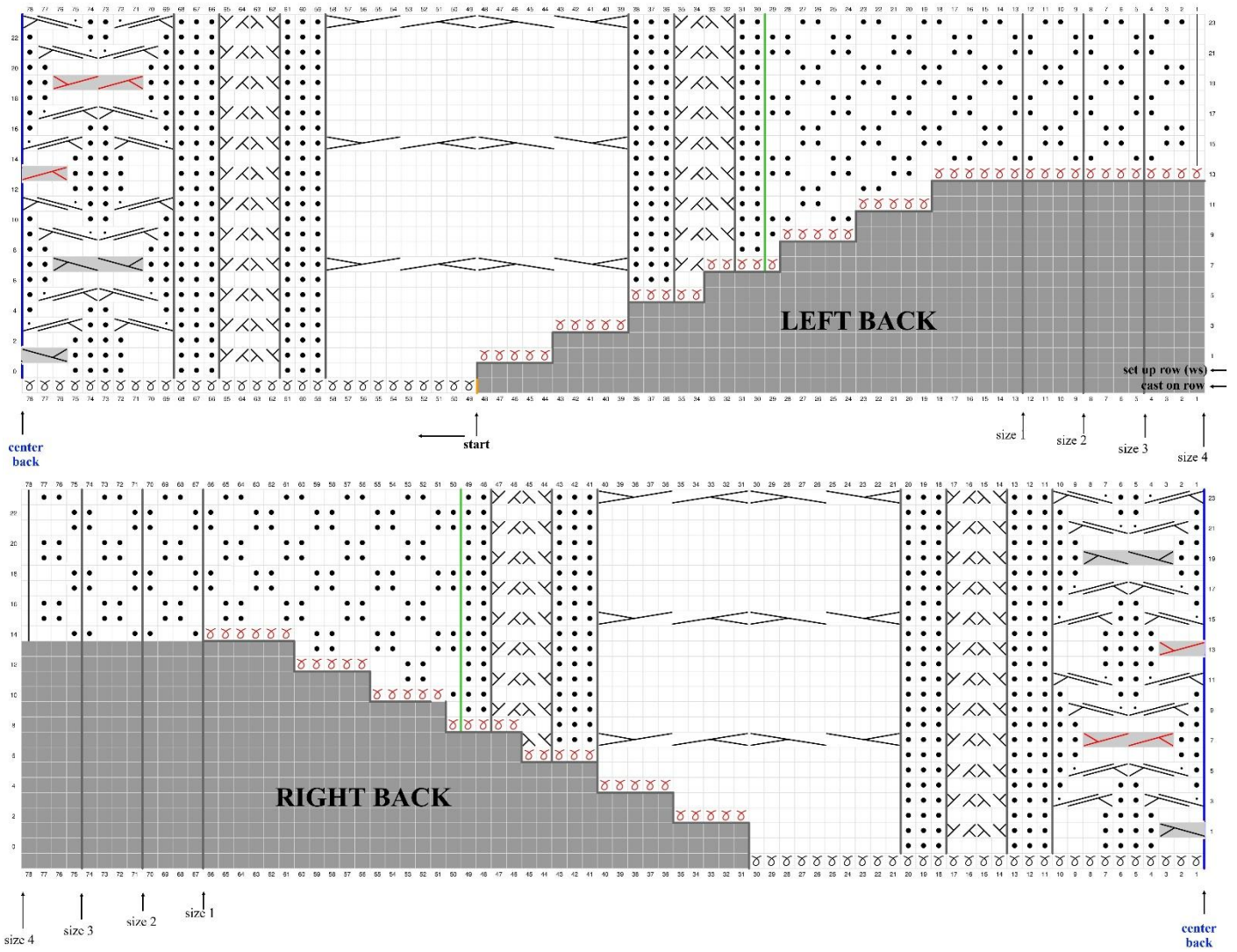
Row 22: p1, k3, p2, k3, p2, k3, p2, k3, p1

Row 23: (1/3 RPC), p2, (1/3 LPC), (1/3 RPC), p2, (1/3 LPC)

Row 24: k3, p4, k6, p4, k3



AEGYO ^{0H} _{II} KNIT



INSTRUCTIONS

BACK

CO 60 sts using the backwards loop method with 4.5 mm / US 7 needle. Pm to indicate cable placements.

NOTE the body chart on pg ____ shows the back in two charts. The blue line is the center of the back. The right side of the back (when it is worn) will be the mirror image of the left side of the back. The orange line in the center of CABLE2 indicates where you start. Two green lines indicate where you transition to box st st. The last st on either end is always an ES (end edge stitch/selvedge st) even if they are not marked in charts for size 1, 2, and 3.

→ **Set up Row (WS):** p10 (part of CABLE 2), pm, k3, pm, p4 (CABLE 1), pm, k3, pm, p3, k4, p6, k4, p3 (CABLE 3 over 20 sts), pm, k3, pm, p4 (CABLE 1), pm, k3, pm, p10 (part of CABLE 2).

Note: Slip all markers (sm) as you pass them for the rest of the project. 'sm's are not noted for the rest of the pattern.

← **Row 1 (RS):** Make 5 new sts using cable CO method¹, then k15 (begin from the newly CO sts), p3, (1/1 LC), (1/1 RC), p3, k3, p4, (3/3 LC), p4, k3, p3, (1/1 LC), (1/1 RC), p3, k10.

→ **Row 2 (WS):** CO 5 sts, then p15, k3, p4, k3, p3, k4, p6, k4, p3, k3, p4, k3, p15.

← **Row 3 (RS):** knit CO x 5, k20, p3, (1/1 LC), (1/1 RC), p3, (1/3 LPC), p2, (1/3 RPC), (1/3 LPC), p2, (1/3 RPC), p3, (1/1 LC), (1/1 RC), p3, k15.

→ **Row 4 (WS):** CO 5 sts, p20, k3, p4, k3, k1, p3, k2, p3, k2, p3, k2, p3, k1, k3, p4, k3, p20.

← **Row 5 (RS):** CO 5 sts, k25, p3, (1/1 LC), (1/1 RC), p3, p1, (1/3 LPC), (1/3 RPC), p2, (1/3 LPC), (1/3 RPC), p1, p3, (1/1 LC), (1/1 RC), p3, k20.

→ **Row 6 (WS):** CO 5 sts, p25, k3, p4, k3, k2, p6, k4, p6, k2, k3, p4, k3, p20, k3, p2.

← **Row 7 (RS):** CO 5 sts, k1, p2, k2, (1/1 RC), p3, (5/5 LC), (5/5 RC), p3, (1/1 LC), (1/1 RC), p3, p2, (3/3 LC), p4, (3/3 RC), p2, p3, (1/1 LC), (1/1 RC), p3, (5/5 LC), (5/5 RC), p3, (1/1 LC).

→ **Row 8 (WS):** CO 5 sts, k3, p2, p2, k3, p20, k3, p4, k3, k2, p6, k4, p6, k2, k3, p4, k3, p20, k3, p4, k2, p1.

← **Row 9 (RS):** CO 5 sts, p2, k2, p2, p2, (1/1 LC), (1/1 RC), p3, k20, p3, (1/1 LC), (1/1 RC), p3, p1, (1/3 RPC), (1/3 LPC), p2, (1/3 RPC), (1/3 LPC), p1, p3, (1/1 LC), (1/1 RC), p3, k20, p3, (1/1 LC), (1/1 RC), p2, k1.

→ **Row 10 (WS):** CO 5 sts, k2, p2, k2, k2, p4, k3, p20, k3, p4, k3, k1, p3, k2, p3, k2, p3, k2, p3, k1, k3, p4, k3, p20, k3, p4, k2, k2, p2, k2.

Please note that the box sts shift between knits and purls on every 3rd row from the RS.

← **Row 11 (RS):** CO 5 sts, p1, k2, p2, k2, p2, k2, p2, (1/1 LC), (1/1 RC), p3, k20, k3, (1/1 LC), (1/1 RC), p3, (1/3 RPC), p2, (1/3 LPC), (1/3 RPC), p2, (1/3 LPC), p3, (1/1 LC), (1/1 RC), p3, k20, p3, (1/1 LC), (1/1 RC), p2, k2, p2, k2.

→ **Row 12 (WS):** CO 5 sts, k1, p2, k2, p2, k2, p2, k2, p4, k3, p20, k3, p4, k3, p3, k4, p6, k4, p3, k3, p4, k3, p20, k3, p4, k2, p2, k2, p2, k2, p2.

← **Row 13 (RS):** CO 6 (10, 14, 18) sts, work these newly cast on sts into box st as done in previous rows, k1, p2, k2, p2, k2, p2, p2, (1/1 LC), (1/1 RC), p3, k20, p3, (1/1 LC), (1/1 RC), p3, k3, p4, (3/3 RC), p4, k3, p3, (1/1 LC), (1/1 RC), p3, k20, p3, (1/1 LC), (1/1 RC), p2, p2, k2, p2, k2, p2, k1.

→ **Row 14 (WS):** CO 6 (10, 14, 18) sts, work these newly cast on sts into box st as done in previous rows, p1, k2, p2, k2, p2, k2, k2, p4, k3, p20, k3, p4, k3, p3, k4, p6, k4, p3, k3, p4, k3, p20, k3, p4, k2, (k2, p2) to the last st, ES.

There are now 36 (40) 44 (48) new sts on each side, no more increases are to be made for the shoulders.

132 (140) 148 (156) sts on the back.

← **Row 15 (RS):** ES, work box sts, following the established pattern to 2 sts before CABLE1, p2, (1/1 LC), (1/1 RC), p3, (5/5 LC), (5/5 RC), p3, (1/1 LC), (1/1 RC), p3, (1/3 LPC), p2, (1/3 RPC), (1/3 LPC), p2, (1/3 RPC), p3, (1/1 LC), (1/1 RC), p3, (5/5 LC), (5/5 RC), p3, (1/1 LC), (1/1 RC), p2, work the box sts following the established pattern to the last st, ES.

¹ Same method is used for inc's in all cases throughout the pattern.

→ **Row 16 (WS):** ES, work as established to the last st, ES.

The pattern on the back is now established.

Follow the established pattern and continue to work until the back measures approx. 19 (19) 21 (23) cm / 7.4 (7.4) 8.2 (9) “, mid-back (or count approx. 6 (6) 7 (8) twists in CABLE 2. The next row must be an RS row where you are to twist CABLE 2. If you are not on this row, work to this row.

Armhole inc: Now new sts must be added for the armholes, and each new st must be incorporated into the established box sts pattern, except your ES. Increase the armhole as follows:

Armhole inc Row 1 & 3 (RS): Make 2 (4, 4, 4) sts, then work the new sts into established box st pattern. Work the rest of the RS to end as established. Turn work.

Armhole inc Row 2 & 4 (WS): CO 2 (4, 4, 4) new sts, then work the new sts into established box st pattern. Work the rest of the WS to end as established. Turn work.

Armhole inc Row 5 (RS): CO 1 (1) 3 (3) new st/s, then work the new st/s incorporate into established box st pattern. Work the rest of the RS to end as established. Turn work.

Armhole inc Row 6 (WS): CO 1 (1) 3 (3) new st/s, then work the new st/s into established box st pattern. Work the rest of the WS to end as established. Turn work.

5 (9) 11 (11) new sts are added to each side, a total of 10 (18) 22 (22) new sts. There are now 142 (158) 170 (178) sts on the back.

Break the yarn after the last WS row and place sts on hold while working on the shoulders/front pieces.

Note: please see the example chart at the end of the pattern for an overview of the next few steps.

LEFT SHOULDER & FRONT

Place your work in front of you so the stitches on hold are at the bottom. From the RS and with 4.5 mm / US 7 needle and the short end of the yarn*, pick up sts from the neck side: pick up 20 (from CABLE 2), 3 (from p3), 4 (from CABLE 1), 2 (from p2), 16 (20) 24 (28) box sts, 1 (from ES).

Total of 46 (50) 54 (58) sts.

Slide your work to the right end of the needle so you can begin working the RS with the long end of the yarn.

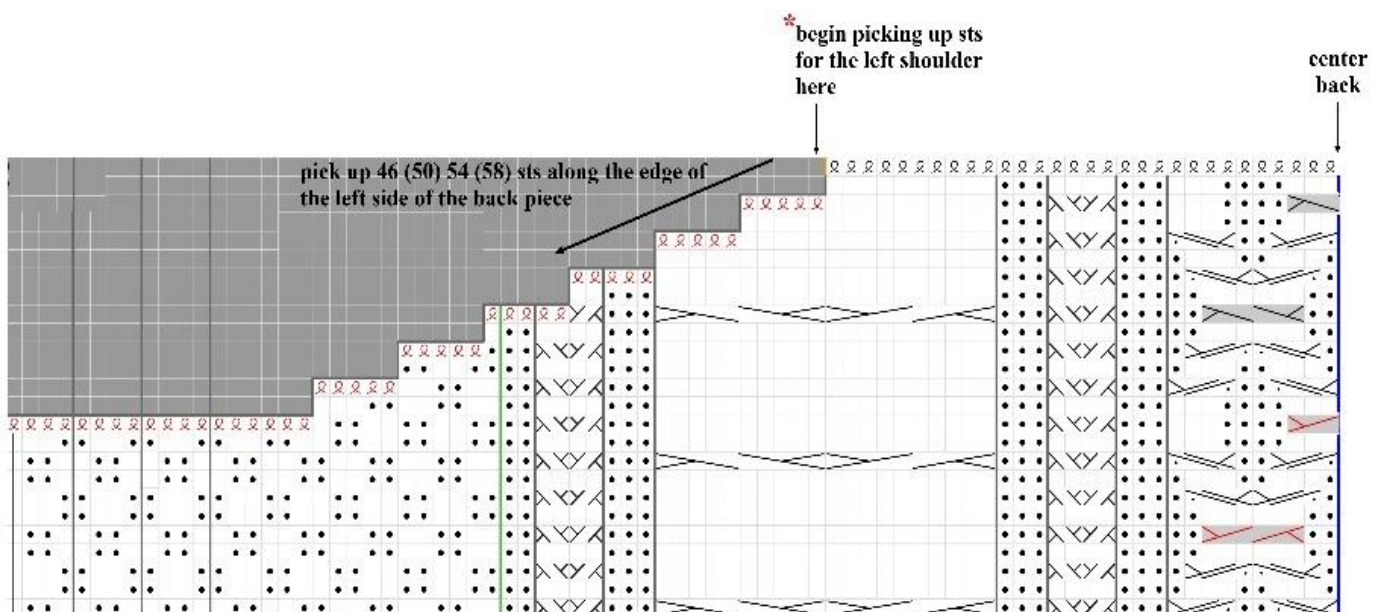
Start by binding off to shape the back neckline:

Row1 (RS): k2, BO1, k1, BO 1. (2 sts bound off). K17, p3, CABLE1, p2, *k2, p2, repeat from * to the last st, 1 ES.

Row 2 (WS): 1ES, work as established to end.

Repeat Rows 1 and 2 3 more times. A Total of 8 sts are bound off on the neck edge.

The stitches are now distributed as follows: 1 ES, K 1, 10 sts for CABLE2, p3, 4 sts for CABL1, p2, 16 (20) 24 (28) box sts, 1 ES.



Continue to work in the established pattern to the WS row, right before you have to twist the CABLE2 for 5 (5) 6 (6) th time, the piece should measure approx. 8 (8) 10 (10) cm.

CO new sts to shape the front neckline:

Row1 (RS): CO 2 sts, k these 2 sts, k2, twist CABLE2, p3, CABLE1, p2, box st to the last st, 1 ES.

Row 2 (WS): 1ES, work as established to end.

Row 2 – 8: Repeat Row 1 & 2 for 3 more times.

Row 9 (RS): CO 3 sts, p these 3 sts, and work to end following the established pattern.

Row 10 (WS): 1ES, work as established to end.

Row 11 (RS): CO 3 sts, p these 3 sts, and work to end in the established pattern.

Row 12 (WS): 1ES, work as established to end.

Row 13 (RS): CO 4 sts, p3, k1, work to end in the established pattern.

Row 14 (WS): 1ES, work as established to end.

18 sts have been added along the inside of the left front neckline. A total of 56 (60) 64 (68) sts.

Continue to work until the piece measures approx. 12 (12) 14 (16) cm / 4.7 (5.5) 6.2 (7) “ from the last CO sts for the front neckline) *or* from where you picked up on the back approx.: 27 (27) 29 (31) cm / 10.6 (10.6) 11.4 (12.2) “ from outer edge = you’re able to count 10 (10) 12 (13) CABLE2 in total, end with WS row where the next row is where you have to twist CABLE2 from RS. Now make new sts towards the armhole from the RS using cable CO method:

Row 1, 3, 5 (RS): Work as established.

Row 2 & 4 (WS): CO 2 (4) 4 (4) new sts, then work the newly cast on sts into your established box st pattern and continue to work to the end as established.

Row 6 (WS): CO 1 (1) 3 (3) new sts, then work the newly cast on sts into your established box st pattern and continue to work to the end as established. The last st at the neckline edge will be worked as an ES from here.

5 (9) 11 (11) new sts towards the armhole, now 61 (69) 75 (79) sts on the left front piece.

Place the left front piece on hold and work the right front piece.

RIGHT SHOULDER & FRONT

From the RS and with 4.5 mm / US 7 needle and the short end of the yarn*, pick up sts from the outermost edge of the shoulder: 1ES, p16 (20) 24 (28), P2, k4 (CABLE1), p3, k20.

Slide your work to the right end of the needle so you can begin working the RS with the long end of the yarn.

Row 1 (RS): 1ES, *P 2, K 2*, repeat *-* for 16 (20) 24 (28) sts, p2 purl, CABLE1 (4 sts), p3 purl, k20.

Row 2 (WS): BO 2 sts, p17, p3, p4, p2, work as established to the last st, 1 ES.

Repeat Row 1 & 2 3 more times, a total of 8 sts BO.

The sts are now distributed as follows: 1 ES, 16 (20) 24 (28) box st, p2l, k4 (CABLE1), p3, 10 sts (CABLE2), k1, 1ES.

Continue to work in the established pattern to the beginning of the WS row, right before you have to twist the CABLE2 for 5 (5) 6 (6) th time, the piece should measure approx. 8 (8) 10 (10) cm.

CO new sts to shape the front neckline:

Row 1, 3, 5, 7 (WS): CO 2 sts, p these 2 sts, work to end as established.

Row 2 (RS): 1ES, work the next 16 (20) 24 (28) sts in box sts, p2, CABLE1 (4 sts), p3, k10 (CABLE2), k3, 1ES.

Row 4 (RS): 1 ES, 16 (20) 24 (28) box st, p2, CABLE1 (4 sts), p3, k10 (CABLE2), k5, 1ES.

Row 6 (RS): 1 ES, 16 (20) 24 (28) box st, p2, CABLE1 (4 sts), p3, k10 (CABLE2), k7, 1ES.

Row 8 (RS): 1 ES, 16 (20) 24 (28) box st, p2, CABLE1 (4 sts), p3, k10 (CABLE2), k9, 1ES

Row 9 & 11 (WS): CO 3 sts, p these 3 sts, work to end as established.

Row 10 (RS): 1 ES, 16 (20) 24 (28) box st, p2, CABLE1 (4 sts), p3, twist CABLE2 over 10 sts, (do not twist the remaining 10 sts yet), k10, p2, 1 ES.

Row 12 (RS): 1 ES, 16 (20) 24 (28) box st, p2, CABLE1 (4 sts), p3, P3, k20 sts over CABLE2, p3, k2, 1ES.

Row 13 (WS): CO 4 new sts, work them as 1 ES, k2, p4 (CABLE1), work to end as established.

Row 14 (RS): 1ES, 16 (20) 24 (28) box st, p2, CABLE1(4 sts), p3, k20 (CABLE2), p3, k4 (CABLE1), P2, 1ES.

18 sts have been added along the inside of the left front neckline. A total of 56 (60) 64 (68) sts.

Continue to work until the piece measures approx. 12 (14) 16 (18) cm / 4.7 (5.5) 6.2 (7) “ (from the last CO sts for the front neckline) *or* measured from where you picked up on the back approx.: 27 (27) 29 (31) cm / 10.6 (10.6) 11.4 (12.2) “ on the outer edge = you’re able to count 10 (10) 12 (13) CABLE2 in total, end with WS row where the next row is where you have to twist CABLE2 from RS. Now you must make new sts towards the armhole from the right side:

Row 1, 3 (RS): Knit CO x 2 (4) 4 (4) new sts, work the new sts into the established box sts pattern, work to end as established.

Row 2, 4, 6 (WS): 1ES, work to end as established.

Row 5 (RS): Knit CO x 1 (1) 3 (3) new sts, work the new sts in the established box sts pattern, work to end as established.

5 (9) 11 (11) new sts towards the armhole and there are now 61 (69) 75 (79) sts on the left front piece.

Do not break the yarn. Front pieces will be joined by casting on 20 sts for CABLE 3 in the center. The next RS

row of the two front pieces must be on the same row of the pattern, so the pattern can continue.

JOIN THE FRONT PIECES & BACK

Work across the right front piece from RS as established, then CO 20 new sts using backward loop CO.

Join the left piece and continue to end as established.

CO 2 sts using backwards loop CO for the underarm. These new sts should be incorporated into the established box st pattern. Work over the back as established. CO 2 sts using backward loop cast on for the underarm (*mind the box st pattern here, too*). Pm for BOR, and then join with the right front piece.

There are now 288 (320) 344 (360) sts.

Continue working in the rnd. Now all sts are worked as shown from RS.

On the second rnd, CABLE3 must be established over the 20 sts. The same row of CABLE 3 should be worked in the front as on the back. Please check your back to ensure you are working on the same row of the CABLE3 pattern. The same applies to your box sts, which must continue over the newly cast-on underarm sts.

K in the rnd until the body measures approx. 25 (26) 27 (28) cm / 9.8 (10) 10.6 (11) “ from armhole.

Finish with a rnd where you don't have to twist the CABLEs, while at the same time switching to needle size 3 mm / US 4.

Bottom Ribbing: *K1, P1*, repeat *-* to end. Continue until your rib measures approx. 4.5 cm / 1.7 “.

Knit 2 set-up rnds for Italian bind off:

Rnd 1: *K1, sl1-pwise wyif*, repeat *-* to end.

Rnd 2: *sl1-pwise wyib, p1*, repeat *-* to end.

Bind off with Italian BO.

FRONT OPENING

With 3 mm needle, pick up 7 (53) 55 (59) sts along the edge on the right side of the opening (right side as you wear it). ES is worked as k on all rows.

Row 1 (WS): 1 ES *p1, k1*, repeat *-* to the last 2 sts, p1, 1 ES, turn work.



Continue to k ES at each end and 1x1 rib as established until it measures almost half of your opening, approx. 4.5 / 1.7 “cm.

Work 2 set-up rows for Italian bind off:

Rnd 1: k1 (ES), *K1, sl1-pwise wyif*, repeat *-* to 2 last sts, k2.

Rnd 2: k1 (ES), *sl1-pwise wyif, k1*, repeat *-* to last st, k1.

Bind off with Italian BO.

Repeat on the left side of the opening. Now you can stitch the ribbings to the edge of CABLE 3 in the center of the front piece.

NECKBAND

From the RS, pick up sts starting from the outer right edge of your edge rib with needle 3 mm / US 4. Pick up 1 st from every row along the edge of the front opening rib. Then pick up along the raw edge at the interval of *3 sts, skip 1 *, repeat *-* until you reach the opposite rib edge and then pick up in all sts.

Total of approx.143 (143) 153 (153) number of sts.

Row 1 (WS): work 1 ES by sl1- pwise wyib, *p1, k1*, repeat *-* to last 2 sts, p1, k1 (ES). Continue to work ES at each end and 1x1 rib as established until it measures the same as the front opening rib, approx. 4-5 cm / 1.7 - 2 “, or 13 rows.

Work 2 set-up rows for Italian bind off:

Rnd 1: k1 (ES), *K1, sl1-pwise wyif*, repeat *-* to 2 last sts, k2.

Rnd 2: k1 (ES), *sl1-pwise wyif, k1*, repeat *-* to last st, k1.

Bind off with Italian BO.

SLEEVES

Left sleeve:

With 4.5 mm / US 7 needle, pick up 84 (90) 98 (100) sts: starting from the center of the underarm, first pick up 1 st from the underarm sts, then 54 (60) 62 (64) sts until you reach the edge where you picked up sts for the front piece, and 28 (30) 32 (34) sts, 1 st, pm for BOR and join in the rnd

Work in the rnd in box stitches:

Rnd 1 & 2: K1, * P2, K2*, repeat *-* to the last st, k1, BOR.

Rnd 3 & 4: p1, *k2, p2*, repeat *-* to the last st, p1, BOR.

Continue to work Rnd 1 – 4 in the rnd in box sts until the sleeve measures approx. 5 cm and the next rnd starts with *k 1, p 2 ...* Proceed to dec over 4 sts and 2 rnds as follows:

Dec Rnd 1: K 1, p2tog, * k2, p2*, repeat until 3 sts remain, p2tog, k1.

Dec Rnd 2: p2tog, *k2, p2*, repeat *-* until there are 2 sts left, p2tog.

4 sts dec’s over 2 rnds in box st. Continue working the rnd’s while inc’ing 3 more times for every 7 cm / 2.7 “.

When the sleeve measures approx.: 26 (26) 27 (27) cm / 10 (10) 10.6 (10.6) “, k 1 rnd where you change to needles 3.5 mm / US 4 while at the same time inc’ing for the ribbing:

Inc 10 sts in the ribbing by making M1Lp evenly on the first rnd *k1, p1, k1, p1, k1, M1lp, k1*, repeat to BOR.

Continue 1x1 ribbing until it measures approx. 4.5 cm / 1.7 “ or desired length.

Work 2 set-up rows for Italian bind off:

Rnd 1: *K1, sl1-pwise wyif*, repeat *-* to end.

Rnd 2: *sl1-pwise wyib, p1*, repeat *-* to end.

Bind off with Italian Bind Off.

Right sleeve:

With needle 4.5 mm / US 7 and new yarn pick up 84 (90) 98 (100) sts: starting from the center of the underarm, first pick up 1 st from the underarm CO 28 (30) 32 (34) sts until you reach the edge where you picked up sts for the front piece for the front piece, then pick up 54 (60) 62 (64) and, 1 st, pm for BOR and join in the rnd.

Rnd 1 & 2: K1, * P2, K2*, repeat *-* to the last st, k1, BOR.

Rnd 3 & 4: p1, *k2, p2*, repeat *-* to the last st, p1, BOR.

Continue to work Rnd 1 – 4 in the round in box st until the sleeve measures approx. 5 cm and the next rnd starts with *k 1, p 2 ...*. Proceed to dec over 4 sts and 2 rnds as follows:

Dec rnd 1: K 1, p2tog, * k2, p2*, repeat until 3 sts remain, p2tog, k1.

Dec Rnd 2: p2tog, *k2, p2*, repeat *-* until there are 2 sts left on the round, p2tog.

4 sts dec'd over 2 rnds in your box st. Continue working the rnd's while inc'ing 3 more times for every 7 cm / 2.7 “.

When the sleeve measures approx.: 26 (26) 27 (27) cm / 10 (10) 10.6 (10.6) “, k 1 rnd where you change to needles 3.5 mm / US 4, while at the same time inc'ing for the ribbing:

Inc 10 sts in the ribbing by making M1Lp evenly on the first rnd: *k1, p1, k1, p1, k1, M1lp, k1*, repeat to BOR.

Continue 1x1 ribbing until it measures approx. 4.5 cm / 1.7 “ or desired length.

Work 2 set-up rows for Italian bind off:

Rnd 1: *K1, sl1-pwise wyif*, repeat *-* to end.

Rnd 2: *sl1-pwise wyib, p1*, repeat *-* to end.

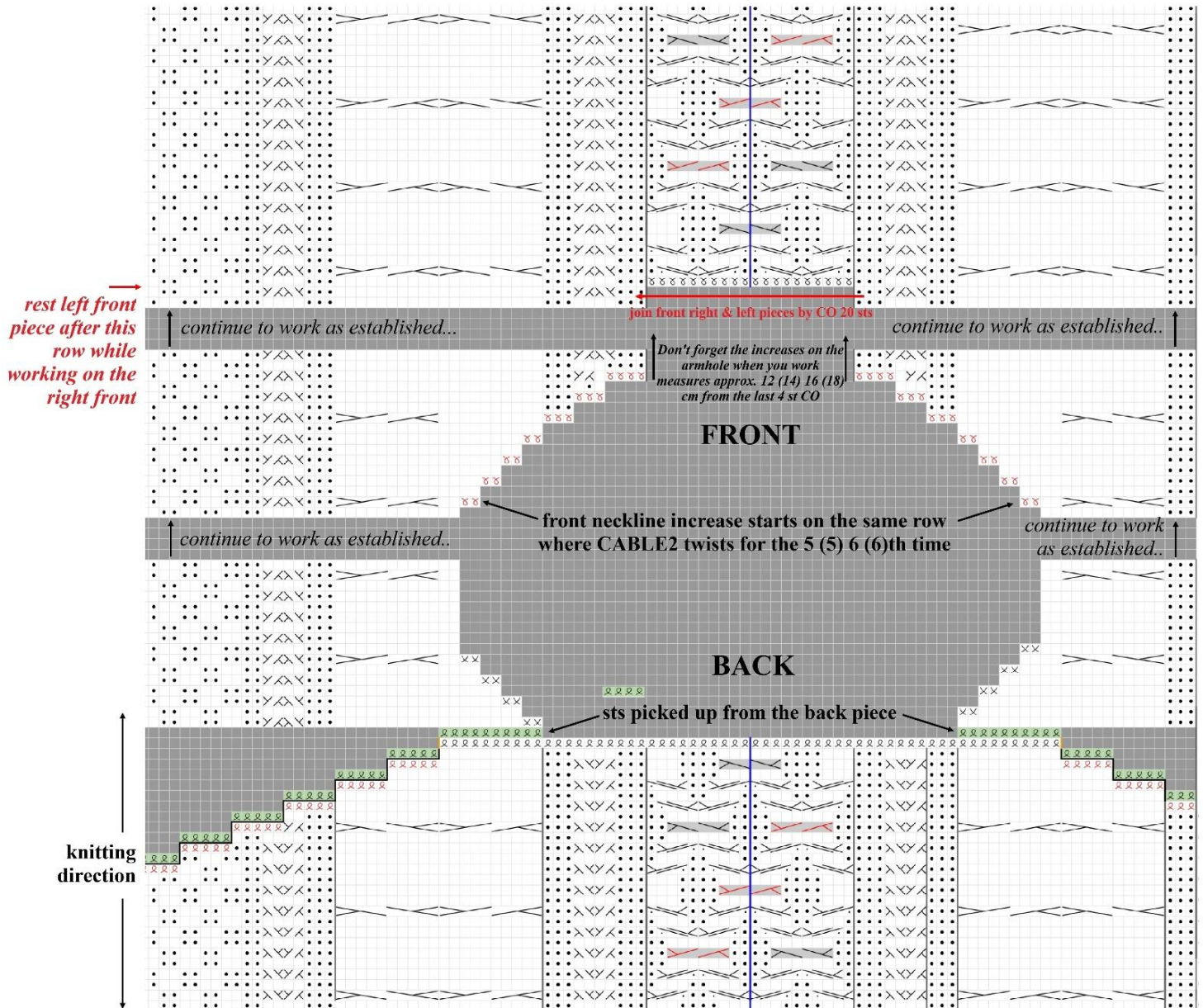
Bind off with Italian Bind Off.

FINISHING

Weave in loose ends. We recommend washing and blocking your sweater to shape and allow the yarn to bloom. Hand wash the sweater with wool/silk soap. You can choose to spin the sweater in the washing machine using a spin only' cycle without adding water.

Lay your sweater flat to dry, block and shape to planned measurements.

This is an example chart for SIZE 1 showing the general schematics for picking up stitches from the back, carrying 2 back pieces over to the front, shaping the front necklines, and joining the front pieces. Please see the pattern for detailed instructions for all sizes.



GENERAL INFORMATION

For support or additional information, please email info@aegyoknit.com. Please allow for a delayed response during weekends, holidays, and busy periods.

Assistance may be found in the Facebook group 'Aegyoknit – inspiration/support' where you can share your Aegyoknit projects, ask former test knitters for advice or contact other knitters. All patterns are available at www.aegyoknit.com and not via Ravelry. The designer is therefore not able to transfer patterns to individual libraries.

Please follow @aegyoknit on Instagram for news and inspiration, and we'd love it if you'd share your projects on social media using the hashtag #aegyoknit
#boreasanorak

THANK YOU

for supporting an independent designer.