



WINTERS PULLOVER

OZETTA

WINTERS PULLOVER

The Winters Pullover is worked from the top down with an oversized fit. It features a fold-over turtleneck for maximum warmth meant for the coldest days. A favorite and classic layering piece to add to your winter wardrobe.

Sizes - 1 (2) 3 (4) 5 (6) 7 (8)

Finished Bust Circumference - 46 (50) 54 (58) 62 (66) 70 (72)"
[117 (127) 137 (147) 157 (168) 178 (183) cm]

Length - 23 (23½) 24 (24½) 25½ (26) 26½ (26½)" [58 (59) 61 (62)
65 (66) 67 (67) cm]

Gauge - 15 sts and 23 rows = 4 x 4" [10 x 10 cm] in stockinette st
worked flat on 6 mm (US Size 10) needles, blocked

Needle Size -

6 mm (US Size 10) 16" and 32-40" circular needles, or the
required needles to obtain gauge (main needles - used for body)
5 mm (US Size 8) 16" and 32-40" circular needles (used for collar,
hem, and sleeve cuffs)

Yarn - Worsted Weight -

1123 (1294) 1403 (1518) 1628 (1732) 1832 (1954) yds
1027 (1183) 1283 (1388) 1489 (1584) 1675 (1787) m
550 (600) 650 (700) 750 (800) 850 (900) g

Lace Weight -

1079 (1262) 1363 (1509) 1603 (1711) 1802 (1935) yds
987 (1154) 1246 (1380) 1466 (1565) 1648 (1769) m
200 (250) 250 (300) 300 (350) 350 (400) g

Note: One strand each of worsted and lace weight yarns are held
together throughout project, but you may choose to knit this
pullover using only a single strand of aran weight yarn as long as
you are able to meet the correct gauge

Suggested Yarn - Istex Léttlopi (100% Icelandic wool, 50 g = 109
yds) in colorway Dark Grey Heather 0058, 11 (12) 13 (14) 15 (16)
17 (18) skeins held together with Istex Einband (100% Icelandic
wool, 50 g = 273 yds) in colorway Dark Grey 9103, 4 (5) 5 (6) 6 (7)
7 (8) skeins

Notions - 1 stitch marker, scrap yarn or extra cables, tapestry
needle, row counter

Techniques - Knitting flat, knitting in the round, long-tail cast-on,
backwards loop cast-on*, increasing, decreasing, German Short
Rows*, holding stitches, picking up stitches, sewn tubular bind off*,
wet blocking.

*Video support may be found on Page 8.

*All measurements and yardage are approximations and are
rounded.*



Notes on the Winters Pullover

Abbreviations

approx. - Approximately	M1L - Make 1 left
BOR - Beginning of round	M1R - Make 1 right
CO - Cast on	P - Purl
ds - Double stitch	PM - Place marker
K - Knit	RS - Right side
K2tog - Knit 2 together	st(s) - Stitch(es)
K2tog-L - Knit 2 together left	WS - Wrong side

The right front is the right side of chest. The left front is the left side of chest.

Choosing Size (schematic on Page 9)

The Winters Pullover has around 16" [41] cm of positive ease built into the pattern. Sizes 1 (2) 3 (4) 5 (6) 7 (8) correspond to a bust circumference of 30 (34) 38 (42) 46 (50) 54 (56)" [76 (86) 97 (107) 117 (127) 137 (142) cm] (the final size of garment will be an additional 16" [41 cm]). This means that if you measure a 34" [86 cm] bust you will make size (2) with a finished bust circumference of 50" [127 cm].

Increases

Increases are worked so that they lean to the right (M1R) or to the left (M1L). Work the increases as follows:

M1R - insert the left hand needle under the bar formed by the stitch you just knit and the stitch you're about to knit from back to front and K normally (into the front of the stitch).

M1L - insert the left hand needle under the bar formed by the stitch you just knit and the stitch you're about to knit from front to back and K through the back loop.

German Short Rows (video support on Page 8)

ds/make ds - Double stitch

With yarn in front, slip the first st. Pull working yarn over top of right needle from front to back, rotating the stitch so that the two legs of stitch stretch over the top of the needle and look like two stitches.

Back

You will shape the back of the pullover by using German Short Rows. You will work flat in stockinette st.

Loosely CO 86 (94) 101 (109) 116 (124) 131 (135) sts on US 10 (6 mm)/32-40" circular needles using the long-tail cast-on method. Break yarn.

Starting at the end from which you just broke the yarn, slip the first 30 (34) 37 (41) 44 (48) 51 (53) sts from the left needle to the right needle. You will not knit these sts for the first row, but you will instead knit them gradually in subsequent rows while utilizing German Short Rows to create a curved back foundation for your pullover.

Join with new yarn and P26 (26) 27 (27) 28 (28) 29 (29) sts until 30 (34) 37 (41) 44 (48) 51 (53) sts remain, turn, make ds.

Next Row (RS) - K until 28 (32) 35 (39) 42 (46) 49 (51) sts remain. Turn. Make ds.

Following Row (WS) - P until 28 (32) 35 (39) 42 (46) 49 (51) sts remain, resolving ds from previous row when you come to it. Turn. Make ds.

You will continue working German Short Rows, each time turning 2 sts after last turn. Meaning, work to your last ds, resolve the ds by knitting (RS) or purling (WS) the ds as one st, work another 2 sts, and turn as follows:

Row 1 (RS) - K to the ds, resolve by knitting ds, K2, turn, make ds.

Row 2 (WS) - P to the ds, resolve by purling ds, P2, turn, make ds.

Tip: If you're having trouble keeping track of your ds, mark its place with a removable stitch marker.

Repeat Rows 1 and 2, 13 (15) 16 (18) 20 (22) 23 (24) **more** times. At the last turn there will be 2 (2) 3 (3) 2 (2) 3 (3) unworked sts remaining after the ds on both the left and right side of your work. The next row will be a RS row.

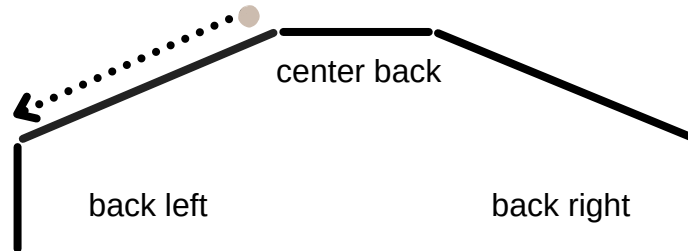
The back now measures approx. 4¾ (5½) 6 (6½) 7¼ (8) 8¼ (8¾)" [12 (14) 15 (17) 18 (20) 21 (22) cm], as measured from center back cast-on edge.

You will continue working back and forth in stockinette st across **all** back sts, resolving the final two ds as you work, for 42 (40) 42 (40) 42 (40) 42 (40) more rows, until back measures approx. 12¼ (12½) 13¼ (13½) 14½ (15) 15¾ (15¾)" [31 (32) 34 (34) 37 (38) 40 (40) cm], as measured from center back cast-on edge. End by working a WS row.

You are now at RS. Break yarn and let sts rest on cable or scrap yarn.

Left Front

With RS of back piece facing and CO sts on top, pick up 30 (34) 37 (41) 44 (48) 51 (53) sts along left slanted edge, beginning at center back. *Note:* To maintain the stockinette and create a seamless look, you will pick up and K in between the sts (i.e., you will pick up sts from in between the ^s).



Work back and forth as follows:

Row 1 (WS) - P across.

Row 2 (RS) - K across.

Repeat Rows 1 and 2, 2 (2) 2 (2) 2 (2) 3 (3) **more** times, for a total of 6 (6) 6 (6) 6 (6) 8 (8) rows, then work **one more** repeat of Row 1 **only**. Left front measures approx. 1¼ (1¼) 1¼ (1¼) 1¼ (1¼) 1¾ (1¾)" [3 (3) 3 (3) 3 (3) 4 (4) cm] as measured from the picked up sts. You are now at RS.

Next work increases to shape the neck edge as follows:

Row 1 (RS) - K3, M1L, K across. (1 st increased).

Row 2 (WS) - P across.

Row 3 (RS) - K across.

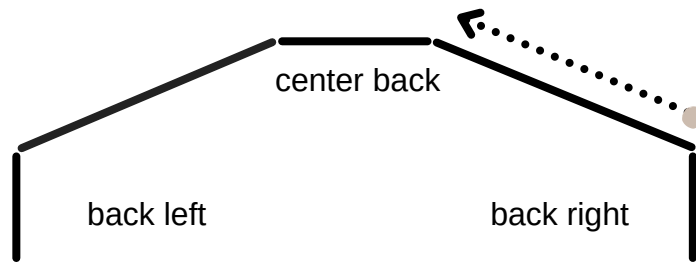
Row 4 (WS) - P across.

Repeat Rows 1-4, 5 **more** times, for a total of 24 rows. 36 (40) 43 (47) 50 (54) 57 (59) sts.

Break yarn and let sts rest on cable or scrap yarn while working Right Front.

Right Front

With RS of back piece facing and CO sts on top, pick up 30 (34) 37 (41) 44 (48) 51 (53) sts, beginning from right slanted edge. *Note:* To maintain the stockinette and create a seamless look, you will pick up and K in between the sts (i.e., you will pick up sts from in between the ^s).



Work back and forth as follows:

Row 1 (WS) - P across.

Row 2 (RS) - K across.

Repeat Rows 1 and 2, 2 (2) 2 (2) 2 (2) 3 (3) **more** times, for a total of 6 (6) 6 (6) 6 (6) 8 (8) rows, then work **one more** repeat of Row 1 **only**. Right front measures approx. 1¼ (1¼) 1¼ (1¼) 1¼ (1¼) 1½ (1½)" [3 (3) 3 (3) 3 (3) 4 (4) cm] as measured from the picked up sts. You are now at RS.

Next work increases to shape the neck edge as follows:

Row 1 (RS) - K across until 3 sts remain, M1R, K3. (1 st increased).

Row 2 (WS) - P across.

Row 3 (RS) - K across.

Row 4 (WS) - P across.

Repeat Rows 1-4, 5 **more** times, for a total of 24 rows. 36 (40) 43 (47) 50 (54) 57 (59) sts.

Do not break yarn.

Join Right Front and Left Front (video support on Page 8 for backwards loop cast-on)

K across 36 (40) 43 (47) 50 (54) 57 (59) sts, CO 14 (14) 15 (15) 16 (16) 17 (17) sts using the backwards loop cast-on method, place Left Front sts on needles and K across 36 (40) 43 (47) 50 (54) 57 (59) sts. You now have created the neckline and have formed the single front panel of your pullover. 86 (94) 101 (109) 116 (124) 131 (135) sts.

Repeat Rows 1 and 2, 21 (22) 24 (25) 27 (29) 29 (30) **more** times, for a total of 44 (46) 50 (52) 56 (58) 60 (62) rows, then work **one more** repeat of Row 1 **only**. Front measures approx. 13½ (14) 14½ (15) 15½ (16) 16¾ (17)" [34 (36) 37 (38) 39 (41) 43 (43) cm].

Body

Join the front panel to the back panel and form the armholes as follows:

K across Front 86 (94) 101 (109) 116 (124) 131 (135) sts, place Back sts on needles and K across 86 (94) 101 (109) 116 (124) 131 (135) sts, PM and join to work in the round. The BOR is now at the right underarm. 172 (188) 202 (218) 232 (248) 262 (270) sts.

Work in the round in stockinette st (knit all sts) until the body measures approx. 7" [18 cm] as measured from the underarm or until the body of your pullover measures 4" [10 cm] less than your desired final length. *Note:* Adding additional length will require more yardage.

Hem

With US 8 (5 mm) 32-40" circular needles, *K1, P1* repeat *-* until hem measures 4" [10 cm]. Cast-off all sts using the sewn tubular cast-off method or your favorite cast-off technique.

Sleeves (same for both) (video support on Page 8 for K2tog-L)

The sleeves are worked in the round. With RS facing and starting at the bottom of the armhole opening, use US 10 (6 mm) 16" circular needles to pick up and K80 (80) 84 (84) 86 (86) 90 (90) sts. You will pick up approx. 2 sts out of every 3 rows or until sts are spread evenly. Place st marker at underarm to mark BOR. Work in the round in stockinette st for 10 (10) 6 (6) 1 (1) 10 (10) rounds.

Next work a decrease round as follows:

Decrease round - K1, K2tog, K in stockinette st until 3 sts remain before marker, K2tog-L, K1. (2 sts decreased).

Continue to work in the round in stockinette st while at the same time working a decrease round as established on every 5 (5) 5 (5) 5 (5) 4 (4) rounds for a total of 14 (14) 15 (15) 16 (16) 18 (18) decrease rounds (including the first decrease round). At the conclusion of your final decrease round, you should have 52 (52) 54 (54) 54 (54) 54 (54) sts remaining.

At this point, you may move on to knitting the sleeve cuff or continue working in stockinette until your sleeve measures 4" [10 cm] less than your desired final length. *Note:* Adding additional length will require more yardage.

Sleeve Cuffs (same for both) (video support on Page 8 for sewn tubular cast-off)

Finish your sleeve by working the cuff as follows:

With US 8 (5 mm) 16" circular needles, *K1, P1* repeat *-* until cuff measures approx. 4" [10 cm]. Cast-off all sts using the sewn tubular cast-off method or your favorite cast-off technique.

Collar

With smaller needles and with RS facing, beginning at right back, pick up 26 (26) 27 (27) 28 (28) 29 (29) sts along the back (one in each initial cast-on stitch), 25 (25) 25 (25) 25 (25) 26 (26) sts down the left neckline (3 out of every 4 stitches along the neckline edge of the Left Front panel), 14 (14) 15 (15) 16 (16) 17 (17) sts along the center front (one in each stitch you cast-on when joining the Right Front and Left Front panels), and 25 (25) 25 (25) 25 (25) 26 (26) sts up the right neckline (3 out of every 4 stitches along the neckline edge of the Right Front panel). Place marker to establish BOR. 90 (90) 92 (92) 94 (94) 98 (98) sts.

Note: The stitch counts for the collar are suggestions. You may choose to pick up less stitches for a closely fitting collar or more stitches for a loosely fitting collar. Just be sure you have picked up an even number of stitches before moving forward so that you are able to correctly maintain a ribbing pattern.

K1, P1 repeat *-* until collar measures 8" [20 cm]. Cast-off all sts using the sewn tubular cast-off method or your favorite cast-off technique.

Finishing

Weave in all loose ends. Block your #WintersPullover. Wear forever.

Video Support for the Winters Pullover

German Short Rows and Resolving the ds - <https://bit.ly/3wniHRY>

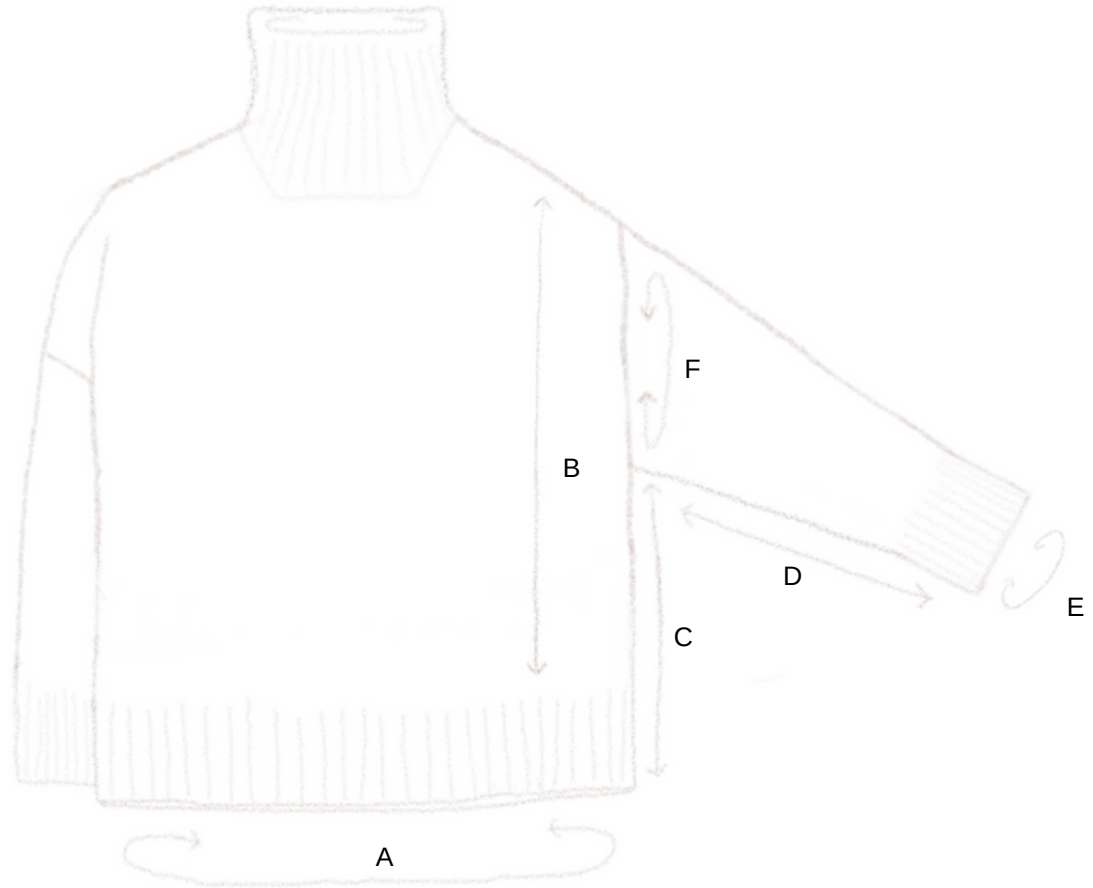
Backwards Loop Cast-On (used to connect Right Front and Left Front) - <https://bit.ly/3AdsCM3>

K2tog-L (used on sleeve decreases) - <https://bit.ly/2S8uFAa>

Sewn Tubular Cast Off (used on sleeve cuffs and hem) - <https://bit.ly/3rddY5E>



Winters Pullover Schematic



A - Finished Bust Circumference

46 (50) 54 (58) 62 (66) 70 (72)"

[117 (127) 137 (147) 157 (168) 178 (183) cm]

D - Sleeve Length From Underarm

18" [46 cm]

B - Total Length

23 (23½) 24 (24½) 25½ (26) 26½ (26½)"

[58 (59) 61 (62) 65 (66) 67 (67) cm]

(as measured from mid back)

E - Cuff Circumference

14 (14) 14 (14) 14½ (14½) 14½ (14½)"

[36 (36) 36 (36) 37 (37) 37 (37) cm]

C - Underarm To Hem Body Length

11" [28 cm]

F - Upper Sleeve Circumference

21 (21) 22 (22) 23 (23) 24 (24)"

[53 (53) 56 (56) 58 (58) 61 (61) cm]

Pattern + images are the property of © Ozetta. Unauthorized reproduction in whole or in part is illegal.

Distribution of patterns or content is not allowed.

Wear Cozy. Stay Warm.

xx
ozetta