

The Vargö collection



VARGÖ PULLOVER & VARGÖ DOG PULLOVER

by Sari Nordlund

Vargö

Color yoke pullover pattern by Sari Nordlund



ON RAVELRY

ON INSTAGRAM

#VargöPullover



The Vargö pullover is knitted seamlessly top-down starting at the neckband. The yoke is knitted in stranded colorwork. The patterns are easy to knit with short pattern repeats (the maximum length of floats is 5 stitches on 3 rounds only). The sleeves and body are separated at the end of the circular yoke and knitted separately. The back is shaped with optional short-rows to improve the fit. Choose two colors with high contrast (one dark color, one light) for the patterns to show.

Vargö is a part of Suomenlinna island situated in front of my hometown Helsinki. On calm and sunny days, it is a popular day trip destination for people living in Helsinki, but the weather can get quite rough on a stormy day when the wind blows from the open sea. The word Vargö means “the island of wolves”.

PS. If you have a dog, I also have this same pattern as a dog sweater.

Sizes

1 (2, 3, 4, 5, 6, 7, 8, 9)

Finished bust circumference: 85 (95, 105, 115, 125, 135, 145, 155, 165) cm / 33.5 (37.5, 41.25, 45.25, 49.25, 53.25, 57, 61, 65) inches including the intended ease of 10 cm / 4 inches

Length from hem to underarm (adjustable): 28 (28, 28, 30, 30, 30, 32, 32, 34) cm / 11 (11, 11, 11.75, 11.75, 11.75, 12.5, 12.5, 13.5) inches

Yoke length: 26.5 (26.5, 26.5, 27.5, 27.5, 27.5, 28.5, 28.5, 28.5) cm / 10.5 (10.5, 10.5, 10.75, 10.75, 10.75, 11.25, 11.25, 11.25) inches

Sleeve length from cuff to underarm (adjustable): 40 (40, 42, 42, 42, 44, 44, 44, 44) cm / 15.75 (15.75, 16.5, 16.5, 16.5, 17.25, 17.25, 17.25, 17.25) inches

Upper arm circumference: 27 (30, 33, 36, 39, 43, 46, 48, 51) cm / 10.75 (11.75, 13, 14.25, 15.25, 17, 18, 19, 20) inches

Note: Please be aware that adjusting the lengths of the garment will also affect the amount of yarn needed to finish the project.

Yarn

MC: 7 (7, 8, 9, 9, 10, 11, 12, 14) skeins skeins of Knitting For Olive Heavy Merino (100 % wool; 125 m / 137 yards per 50 g), shown in colorway Mushroom rose, or 760 (840, 920, 1010, 1100, 1230, 1350, 1480, 1630) m / 830 (920, 1010, 1110, 1220, 1340, 1480, 1630, 1780) yards of similar worsted weight yarn.

CC: 2 (2, 2, 2, 2, 2, 3, 3, 3) skeins of Knitting For Olive Heavy Merino (100 % wool; 125 m / 137 yards per 50 g), shown in colorway Dark moose, or 150 (160, 180, 200, 220, 240, 260, 290, 320) m / 160 (180, 200, 220, 240, 260, 290, 320, 350) yards of similar worsted weight yarn.

Needles

3.25 mm / US3 DPNs or a circular needle with a cable suitable for small circumference knitting for cuffs

3.25 mm / US3 circular needle with a cable length of 40 cm / 16 inches for the neckline

3.25 mm / US3 circular needle with a cable length of 80 cm / 32 inches for smaller sizes and 100 cm / 40 inches for larger sizes for the hem

4 mm / US6 circular needle with a cable length of 40 cm / 16 inches for smaller sizes and 60 cm / 24 inches for larger sizes for the sleeves

4 mm / US6 circular needle with a cable length of 80 cm / 32 inches for smaller sizes and 100 cm / 40 inches for larger sizes for the main part

Note: Always use the needle size that gets you the right gauge! You might need to knit the colorwork using a needle one size larger than you would normally use for Stockinette stitch with the same yarn weight, so swatch carefully and change needles after finishing the colorwork section if necessary.

Gauge

20 sts and 24 rounds = 10 cm / 4 inches of charted pattern in the round on larger needles, after blocking

20 sts and 28 rounds = 10 cm / 4 inches of Stockinette stitch in the round on larger needles, after blocking

Notions

2 stitch markers

waste yarn

sewing needle

blocking tools

Instructions

NECKBAND

Using MC, CO 96 (100, 100, 104, 104, 108, 108, 108, 108) sts for the neck on the smaller needles (size suggested 3.25 mm / US 3) using the Long Tail Cast On method. Pm for BOR and join in the round carefully to not twist the ring of sts. The BOR marker is on the right back shoulder.

Ribbing Round: *K1, p1; repeat from * until end.

Continue as established until the neckband measures 7.5 cm / 3 inches from the CO edge. Note: The neckband will be folded double and sewn on the inside of the sweater at the end.

YOKE

Change to larger needles (size suggested 4 mm / US 6).

Sizes 1-3 and 6-9 only

Increase round 1: *K4 (5, 5, -, -, 3, 3, 3, 3), m1L; repeat from * until end. 24 (20, 20, -, -, 36, 36, 36, 36) sts increased, 120 (120, 120, -, -, 144, 144, 144, 144) sts on needles.

Size 4 only

Increase round 1: *K6, m1L, k7, m1L; repeat from * until end. 16 sts increased, 120 sts on needles.

Size 5 only:

Increase round 1: *(K3, m1L) x 3, (k2, m1L) x 2; repeat from * until end. 40 sts increased, 144 sts on needles.

All sizes resume

Join CC to the work and start colorwork as established on Chart 1. The 4-stitch pattern repeats 30 (30, 30, 30, 36, 36, 36, 36, 36, 36) times on each round. Work all 5 rounds of the Chart 1.

Sizes 1-4 only

Increase round 2: Using MC, *k2, m1L, k3, m1L; repeat from * until end. 48 sts increased, 168 sts on needles.

Sizes 5-9

Increase round 2: Using MC, *k2, m1L; repeat from * until end. 72 sts increased, 216 sts on needles.

Work colorwork as established on Chart 2. The 6-stitch pattern repeats 28 (28, 28, 28, 36, 36, 36, 36, 36) times on each round. Work all 17 rounds of the Chart 2.

Sizes 1, 2, 5, 6, 8 and 9 only

Increase round 3: Using MC, *k7 (7, -, -, 9, 9, -, 3, 3), m1L; repeat from * until end. 24 (24, -, -, 24, 24, -, 72, 72) sts increased, 192 (192, -, -, 240, 240, -, 288, 288) sts on needles.

Sizes 3, 4 and 7 only

Increase round 3: Using MC, *k- (-, 3, 3, -, -, 4, -, -), m1L, k- (-, 4, 4, -, -, 5, -, -), m1L; repeat from * until end. 48 sts increased, - (-, 216, 216, -, -, 264, -, -) sts on needles.

All sizes resume

Work colorwork as established on Chart 3. The 4-stitch pattern repeats 48 (48, 54, 54, 60, 60, 66, 72, 72) times on each round. Work all 3 rounds of the Chart 3.

Sizes 1-5 and 8 only

Increase round 4: Using MC, *k8 (8, 6, 6, 5, -, -, 3, -), m1L; repeat from * until end. 24 (24, 36, 36, 48, -, -, 96, -) sts increased, 216 (216, 252, 252, 288, -, -, 384, -) sts on needles.

Size 6 only

Increase round 4: Using MC, *k2, m1L, k3, m1L; repeat from * until end. 96 sts increased, 336 sts on needles.

Size 7 only

Increase round 4: Using MC, *k2, m1L, (k3, m1L) x 3; repeat from * until end. 96 sts increased, 360 sts on needles.

Size 9 only

Increase round 4: Using MC, *(k3, m1L) x 3, (k2, m1L) x 2; repeat from * until end. 120 sts increased, 408 sts on needles.

All sizes resume

Work colorwork as established on Chart 4. The 6-stitch pattern repeats 36 (36, 42, 42, 48, 56, 60, 64, 68) times on each round. Work all 9 rounds of the Chart 4.

Sizes 1-2 and 6-7 only

Increase round 5: Using MC, *k9 (6, -, -, -, 14, 15, -, -), m1L; repeat from * until end. 24 (36, -, -, -, 24, 24, -, -) sts increased, 240 (252, -, -, -, 360, 384, -, -) sts on needles.

Sizes 8 and 9 only

Increase round 5: Using MC, *k- (-, -, -, -, -, 10, 12), m1L, (k- (-, -, -, -, -, 11, 11), m1L) x 2; repeat from * until end. - (-, -, -, -, -, 36, 36) sts increased, - (-, -, -, 342, -, -, 420, 444) sts on needles.

Sizes 3 and 4 only

Increase round 5: Using MC, *k- (-, 10, 3, -, -, -, -), m1L, k- (-, 11, 4, -, -, -, -), m1L; repeat from * until end. - (-, 24, 72, -, -, -, -) sts increased, - (-, 276, 324, -, -, -, -) sts on needles.

Size 5 only

Increase round 5: Using MC, *k4, m1L, (k5, m1L) x 4; repeat from * until end. 60 sts increased, 348 sts on needles.

All sizes resume

Work colorwork as established on Chart 5. The 4-stitch pattern repeats 60 (63, 69, 81, 87, 90, 96, 105, 111) times on each round.

Work one round in MC.

Then work according to Chart 6. The 6-stitch pattern repeats 40 (42, 46, 54, 58, 60, 64, 70, 74) times on each round. Work all 17 rounds of the Chart 6. At the end of the chart, break CC yarn and continue with MC only.

Sizes 1 and 4 only

Increase round 6: K40 (-, -, 18, -, -, -, -), m1L; repeat from * until end. 6 (-, -, 18, -, -, -, -) sts increased, 246 (-, -, 342, -, -, -, -) sts on needles.

Sizes 2, 6 and 9 only

Increase round 6: K- (5, -, -, -, 3, -, -, 3), *m1L, (k- (9, -, -, -, 10, -, -, 10), m1L, k- (10, -, -, -, 11, -, -, 11); repeat from * until end. - (26, -, -, -, 34, -, -, 42) sts increased, - (278, -, -, -, 394, -, -, 486) sts on needles.

Sizes 3, 7 and 8 only

Increase round 6: K- (-, 4, -, -, -, 6, 12, -), *m1L, k- (-, 8, -, -, -, 9, 12, -); repeat from * until end. - (-, 34, -, -, -, 42, 34, -) sts increased, - (-, 310, -, -, -, 426, 454, -) sts on needles.

Size 5 only

Increase round 4: *K34, m1L, (k35, m1L) x 4; repeat from * until end. 10 sts increased, 358 sts on needles.

All sizes resume

At the end of this section there are 246 (278, 310, 342, 358, 394, 426, 454, 486) sts on needles.

Continue in stockinette stitch until the yoke measures 26.5 (26.5, 26.5, 27.5, 27.5, 27.5, 28.5, 28.5, 28.5) cm / 10.5 (10.5, 10.5, 10.75, 10.75, 10.75, 11.25, 11.25, 11.25) inches from the beginning of the colorwork section or the desired length.

SEPARATE BODY AND SLEEVES

Note: This is a good place to put the sts on a piece of waste yarn and try the yoke on to see how it fits. If you need to add extra length, you can knit a few more rounds in Stockinette stitch before separating the body and the sleeves.

Next Round: Put the next 46 (52, 58, 64, 66, 74, 80, 84, 90) sts on hold for the right sleeve, pm for BOR, CO 8 (8, 8, 8, 12, 12, 12, 12, 12) sts for underarm, k77 (87, 97, 107, 113, 123, 133, 143, 153), put the next 46 (52, 58, 64, 66, 74, 80, 84, 90) sts on hold for the left sleeve, CO 8 (8, 8, 8, 12, 12, 12, 12, 12) sts for underarm, pm, k until end. The BOR marker is now at the right shoulder just before the underarm. Continue working in the round. (170 (190, 210, 230, 250, 270, 290, 310, 330) sts on needles for the body)

SHORT-ROW SHAPING FOR THE BACK

This part is optional, so if you don't want to do the short-row shaping you can continue straight to the instructions for the body. The short-rows are worked at each armhole to make the back longer than the front.

Short-Row 1 (RS): Work 1 round of Stockinette stitch until the BOR m. Then turn the work.

Short-row 2 (WS): Sl1 wyif and yo at the same time, pull the working yarn so that the "legs" of the slipped st rise up on the right needle and look like a pair of sts. From now on, this is called a "stitch pair." P until next m, turn the work.

Short-row 3 (RS): Sl1 wyif and yo at the same time, pull the yarn as above, knit to 1 st before BOR, work the stitch pair as k2tog, sm, k2, turn the work.

Short-row 4 (WS): Sl1 wyif and yo at the same time, pull the yarn as above, purl to BOR, sm, purl until the next stitch pair, work the stitch pair as p2tog, sm, p2, turn the work.

Short-row 5 (RS): Sl1 wyif and yo at the same time, pull the yarn as above, knit to next m, sm, knit to BOR, sm, knit until the next stitch pair, work the stitch pair as k2tog, k2, turn the work.

Short-row 6 (WS): Sl1 wyif and yo at the same time, pull the yarn as above, purl to BOR, sm, purl until the next m sm, purl until the next stitch pair, work the stitch pair as p2tog, p2, turn the work.

Repeat Short-rows 5-6 another 3 (3, 3, 3, 5, 5, 5, 5) times.

Short-row 7 (RS): Sl1 wyif and yo at the same time, pull the yarn as above, knit to BOR.

Next Round: Resume working in the round. Work in Stockinette stitch and work the remaining stitch pairs as k2tog at the same time.

BODY

Next Round: Remove the BOR m, k4 (4, 4, 4, 6, 6, 6, 6, 6), pm for BOR (right side, middle of underarm). Work in Stockinette stitch until the end of the round. You can also remove the second marker from the left shoulder, it is no longer needed.

Work in Stockinette stitch until the body measures 24 (24, 24, 26, 26, 26, 28, 28, 30) cm / 9.5 (9.5, 9.5, 10.25, 10.25, 10.25, 11, 11, 12) inches from the underarm, or 4 cm / 1.5 inches less than the desired length.

HEM

Change to smaller needles (size suggested 3.25 mm / US 3).

Ribbing Round: *K1, p1; repeat from * until end.

Continue as established until the hem measures 4 cm / 1.5 inches.

Bind off all sts using the Sewn Tubular Bind Off, or other bind off method of your choice.

Good tutorials for the Sewn Tubular Bind Off:

<https://shibuiknits.com/pages/tubular-bind-off>

<https://stitchesnscraps.com/tutorial-tubular-bind-off-in-the-round/>

SLEEVES

Note: To avoid holes at the sides of the underarm, you can pick up an extra stitch from the gap between the underarm and the stitches held for the sleeve and immediately decrease it by working it together with the stitches next to it on the first round.

Take the stitches held for the left sleeve back on your larger needles. Starting at the middle of the underarm CO edge, pick up and knit 4 (4, 4, 4, 6, 6, 6, 6, 6) sts along the side of the CO edge, then pick up and knit 1 st in the gap between the underarm CO edge and the sleeve. K the sleeve sts, then pick up and knit 1 st in the gap between the sleeve and the underarm CO edge and 4 (4, 4, 4, 6, 6, 6, 6, 6) sts along the second half of the underarm CO edge. Pm for BOR and continue working in the round. (56 (62, 68, 74, 80, 88, 94, 98, 104) sts on needles for the sleeve)

Work another 18 (10, 7, 6, 4, 4, 4, 3, 3) rounds in Stockinette stitch (=k all).

Decrease Round: K1, k2tog, k until 3 sts remain before the end of the round, ssk and k1. 2 sts decreased, 54 (60, 66, 72, 78, 86, 92, 96, 102) sts on needles.

Repeat the decreases on every 19th (11th, 8th, 7th, 5th, 5th, 5th, 4th, 4th) round another 3 (6, 9, 11, 14, 17, 18, 20, 23) times. 48 (48, 48, 50, 50, 52, 56, 56, 56) sts on needles.

Continue working in Stockinette stitch until the sleeve measures 32 (32, 34, 34, 34, 36, 36, 36, 36) cm / 15.75 (15.75, 16.5, 16.5, 16.5, 17.25, 17.25, 17.25, 17.25) inches from the underarm or 8 cm / 3.25 inches less than the desired length.

CUFF

Change to smaller needles (size suggested 3.25 mm / US 3).

Ribbing Round: *K1, p1; repeat from * until end.

Continue as established until the cuff measures 8 cm / 3.25 inches.

Bind off all sts using the Sewn Tubular Bind Off, or other bind off method of your choice.

FINISHING

Fold the neckband double and sew the CO edge on the inside at the base of the neckband using the whip stitch. Weave in all remaining yarn ends. Wet block to measurements.

Abbreviations

BO	Bind off
BOR	Beginning of the round
CC	Contrasting color
CO	Cast on
DPN	Double pointed needles
k	Knit
k2tog	Knit 2 sts together
m1L	Make 1 knit st (left-leaning)
MC	Main color
p	Purl
pm	Place marker
RS	Right side
sl	Slip the next st as if to purl
sm	Slip marker
ssk	Slip, slip, knit the slipped sts together through the back loop
st(s)	Stitch(es)
WS	Wrong side
wyif	With yarn in front
yo	Yarn over



Chart 1

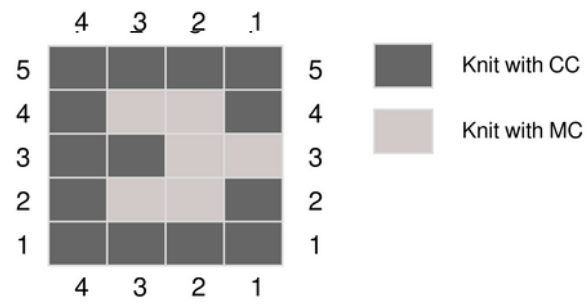


Chart 2

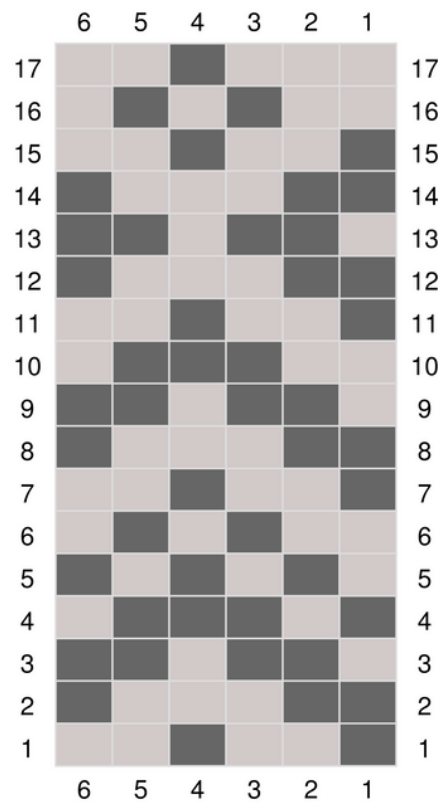


Chart 3

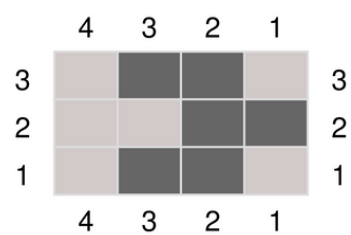


Chart 4

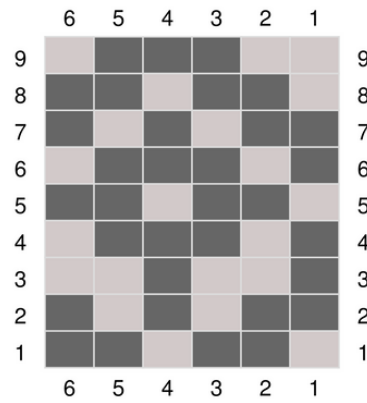


Chart 5

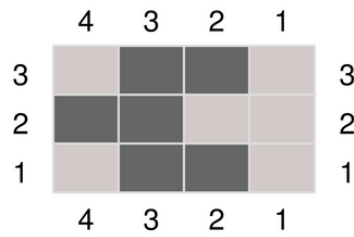
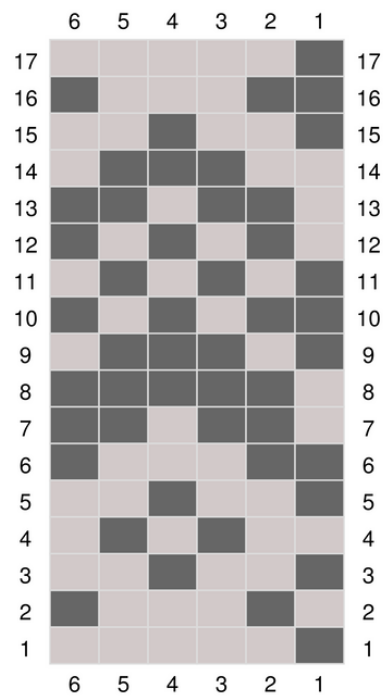


Chart 6



Vargö dog sweater

Colorwork dog sweater pattern by Sari Nordlund



ON RAVELRY

ON INSTAGRAM

#VargöDogSweater



The Vargö dog sweater is knitted seamlessly starting at the neckband. The upper body is knitted in stranded colorwork and the lower body is worked in Stockinette stitch in just one color. The colorwork patterns are easy to knit with 4- or 6 stitch pattern repeats (the maximum length of floats is 5 stitches). The back and belly are separated at the leg openings and knitted separately. After completing the leg openings, the back and belly are joined in the round again. The back is then worked longer than the belly by binding off stitches at the belly and shaping the back with decreases. Lastly the stitches are picked up for the ribbing around the back and the leg openings and worked in the round.

All dogs are different, so the measurements given are just estimates. I recommend taking measurements of your dog first and matching them when knitting the sweater. Also, if possible, try the sweater on your dog as often as possible. You can easily adjust the pattern by adding more length before the leg openings or vice versa, making the neck shorter, or for example adding more decreases at the underbelly to make it fit more snugly.

Vargö is a part of Suomenlinna island situated in front of my hometown Helsinki. On calm and sunny days, it is a popular day trip destination for people living in Helsinki, but the weather can get quite rough on a stormy day when the wind blows from the open sea. The word Vargö means “the island of wolves”.

Dog's measurements:

Chest width: 30 (40, 48, 56) cm / 11.75 (15.75, 19, 22) inches. Eetu is wearing the largest size with a chest circumference of 54 cm / 21.25 inches.

Back length: approximately 26.5 (38, 47.5, 57) cm / 10.5 (15, 18.75, 22.5) inches

Yarn

MC: 2 (2, 3, 3) skeins of Knitting For Olive Heavy Merino (100 % wool; 125 m / 137 yards per 50 g), shown in colorway Pearl gray, or 140 (200, 260, 300) m / 160 (220, 290, 330) yards of similar worsted weight yarn.

CC: 1 skein of Knitting For Olive Heavy Merino (100 % wool; 125 m / 137 yards per 50 g), shown in colorway Dark ochre, or 50 (60, 80, 90) m / 60 (70, 90, 100) yards of similar worsted weight yarn.

Needles

3.25 mm / US3 DPNs or a circular needle with a cable suitable for small circumference knitting for sleeve openings and the neckline for sizes 1 and 2

3.25 mm / US3 circular needle with a cable length of 40 cm / 16 inches for the neckline for sizes 3 and 4

3.25 mm / US3 circular needle with a cable length of 80 cm / 32 inches for the back edging

4 mm / US6 circular needle with a cable length of 40 cm / 16 inches for the body

Note: Always use the needle size that gets you the right gauge! You might need to knit the colorwork using a needle one size larger than you would normally use for Stockinette stitch with the same yarn weight, so swatch carefully and change needles after finishing the colorwork section if necessary.

Gauge

20 sts and 24 rounds = 10 cm / 4 inches of charted pattern in the round on larger needles, after blocking

20 sts and 28 rounds = 10 cm / 4 inches of Stockinette stitch in the round on larger needles, after blocking



Notions

2 stitch markers

waste yarn

sewing needle

blocking tools

Instructions

NECK

Note: If you do not wish to work the Tubular Cast On, CO 52 (60, 72, 72) sts with the MC yarn using the smaller needles (size suggested 3.25 mm / US3) and the Long Tail CO method and continue straight to The Ribbing Round.

With the waste yarn, CO 26 (30, 36, 36) sts on the smaller needles (size suggested 3 mm / US 2.5) using the Long Tail CO method. Join in the round carefully to not twist the ring of sts and pm for BOR. Break the waste yarn and attach the MC yarn to the work.

Tubular Round 1: *K1, yo; repeat from * until end. (52 (60, 72, 72) sts on needles)

Tubular Round 2: *Sl1 wyib, p1; repeat from * until end.

Tubular Round 3: *K1, sl1 wyif; repeat from * until end. You can now undo the waste yarn from the cast on edge.

Ribbing Round: *K1, p1; repeat from * until end.

Continue in ribbing until the neck measures 3 (4, 5, 6) cm / 1.25 (1.5, 2, 2.5) inches from the CO edge or the desired length for your dog.

On the next round make a small opening for the leash at the top of the neck:

Next Round: K1, (p1, k1) x 12 (14, 17, 17), BO 2 sts, p1, *k1, p1; repeat from * until end.

Next Round: K1, (p1, k1) x 12 (14, 17, 17), CO 2 sts using the Cable CO method or the Back Loop CO method, p1, *k1, p1; repeat from * until end.

Note: A good tutorial for the Cable Cast On can be found here: <https://www.purlsoho.com/create/cable-cast-on/>

Then work 1 more round in ribbing on all sts.

BODY

Change to larger needles (size suggested 4 mm / US6).

Size 1 only:

Increase Round 1: *K6, m1L, k7, m1L; repeat from * until end. 8 sts increased, 60 sts on needles.

Size 2 only:

Increase Round 1: *K5, m1L; repeat from * until end. 12 sts increased, 72 sts on needles.

Size 3 only:

Increase Round 1: *(K3, m1L) x 2, (k4, m1L) x 3; repeat from * until end. 20 sts increased, 92 sts on needles.

Size 4 only:

Increase Round 1: *K2, m1L; repeat from * until end. 36 sts increased, 108 sts on needles.

All sizes resume:

Round 1: Work Round 1 of the Chart 1. The 4 stitch-pattern repeats 15 (18, 23, 27) times on each round. Then work Rounds 2-5 of the Chart 1.

Size 1 only: Remove marker, k6 in MC, pm for BOR, work in Stockinette stitch until the end of the round in MC.

Read the instructions for dividing for legs below and at the same time continue the colorwork by working Chart 2. The 12-stitch pattern repeats 5 times on each round.

Size 2 only:

Increase Round 2: Using MC, *k6, m1L; repeat from * until end. 12 sts increased, 84 sts on needles.

Next Round: Remove marker, k6 in MC, pm for BOR.

Read the instructions for dividing for legs below and at the same time continue the colorwork by working Chart 3. The 12-stitch pattern repeats 7 times on each round.

Size 3 only:

Increase Round 2: Using MC, *k5, m1L, (k6, m1L) x 3; repeat from * until end. 16 sts increased, 108 sts on needles.

Next Round: Remove marker, k12 in MC, pm for BOR.

Read the instructions for dividing for legs below and at the same time continue the colorwork by working Chart 4. The 12-stitch pattern repeats 9 times on each round.

Size 4 only:

Increase Round 2: Using MC, *k9, m1L; repeat from * until end. 12 sts increased, 120 sts on needles.

Next Round: Remove marker, k12 in MC, pm for BOR.

Read the instructions for dividing for legs below and at the same time continue the colorwork by working Chart 5. The 12-stitch pattern repeats 10 times on each round.

DIVIDE FOR LEGS

All sizes resume:

When you have worked 3 (9, 15, 19) rounds of the chart indicated for your size or the piece measures 4 (7, 9, 11) cm / 1.5 (2.75, 3.5, 4.5) inches from the bottom of the ribbing (= from Increase Round 1) or the desired length for your dog, divide for front legs:

Work next 48 (72, 84, 96) sts in colorwork pattern as established for your size. Put the next 12 (12, 24, 24) stitches left of the round on hold for the belly on a piece of waste yarn. Turn the work and continue working flat.

Work flat on the 48 (72, 84, 96) back sts in the colorwork pattern as established for your size until you are on round 18 (24, 34, 42) of the chart indicated for your size or the leg opening measures 6 (7.5, 10, 12) cm / 2.5 (3, 4, 4.75) inches or the desired length for your dog ending with a RS row. Then break both yarns and place the stitches on hold on a piece of waste yarn.

Take the 12 (12, 24, 24) belly stitches back on your needles. Reattach the yarns ready to work a RS row. Work in colorwork pattern as established for your size until you are on round 18 (24, 34, 42) of the chart indicated for your size or the leg opening measures 6 (7.5, 10, 12) cm / 2.5 (3, 4, 4.75) inches or the same length as the back ending with a RS row (make sure you end up with the same row of the chart as you did on the back).

Take the 48 (72, 84, 96) back sts on your needles. Pm for BOR, and continue in the next round of the colorwork pattern as established for your size over the whole body. There are 60 (84, 108, 120) sts on your needles.

Work until the end of the colorwork pattern as established for your size. Then break CC yarn and continue in MC only.

Round 1: K48 (72, 84, 96), pm, k to end.

Round 2: *K1, k2tog, k until 3 sts remain before the next m, ssk, k1, sm; repeat from * once. 4 sts decreased, 56 (80, 104, 116) sts on needles, 46 (70, 82, 94) sts on the back and 10 (10, 22, 22) sts on the belly.

Round 3: K all slipping all markers.

Round 4: K1, k2tog, k until 3 sts remain before the next m, ssk, k1, sm, k to end. 2 sts decreased, 54 (78, 104, 11) sts on needles, 44 (68, 80, 92) sts on the back and 10 (10, 22, 22) sts on the belly.

Round 5: K all slipping all markers.

Repeat Rounds 2-5 another 0 (1, 2, 3) time(s) and then Rounds 2-3 another 1 (0, 1, 0) time(s). 50 (72, 86, 96) sts on needles, 42 (64, 70, 80) sts on the back and 8 (8, 16, 16) sts on the belly.

SHAPING THE BACK

Next Round: K to next m, remove marker and BO the next 8 (8, 16, 16) belly stitches. Remove BOR m and k to end. Turn work and continue working flat. 42 (64, 70, 80) sts on needles.

Row 1 (WS): Sl1 wyif, p until 1 st remains, sl1 wyif. Turn work.

Row 2 (RS): K1, ssk, k until 3 sts remain, k2tog, k1. Turn work. 2 sts decreased, 40 (62, 68, 78) sts on needles.

Repeat Rows 1-2 another 9 (15, 19, 22) times or until the back measures 7 (11.5, 14, 16.5) cm / 2.75 (4.5, 5.5, 6.5) inches from separating the belly sts or the desired length for your dog, ending with a WS row. Note: Make fewer decreases if you want to make the back shorter or keep decreasing on every RS row as established until desired length if you wish to make the back slightly longer. 22 (32, 30, 34) sts on needles.

RIBBING

Change to smaller needles (size suggested 3.25 mm / US 3).

Set-Up Row (RS): K to end of the back. Pick up and knit 20 (32, 40, 46) sts along the side until the bind off edge at the belly (approximately 1 sts per round = 2 sts per 1 slipped edge st). Then pick up and knit 8 (8, 16, 16) sts along the bind off edge at the belly (1 st per bound off stitch). Pick up and knit another 20 (32, 40, 46) sts along the second side of the back. Pm for BOR and continue working in the round. 70 (104, 126, 142) sts on needles.

Ribbing Round: *K1, p1; repeat from * until end.

Continue in ribbing until the edge measures 2.5 cm / 1 inch or the desired length. Note: You can end the last round when you are approximately under the belly.

Bind off all sts using the Sewn Tubular Bind Off, or other stretchy bind off method of your choice.

Good tutorials for the Sewn Tubular Bind Off:

<https://shibuiknits.com/pages/tubular-bind-off>

<https://stitchesnscraps.com/tutorial-tubular-bind-off-in-the-round/>

SLEEVES (LEGS)

Use the smaller needles (size suggested 3.25 mm / US 3).

Using MC pick up and knit 12 (15, 20, 24) sts along the first side of the leg opening, then 2 sts from the gap between the sides, another 12 (15, 20, 24) sts along the second side of the leg opening and 2 sts from the gap. Pm for BOR and continue working in the round. 28 (34, 44, 52) sts on needles.

Ribbing Round: *K1, p1; repeat from * until end.

Continue in ribbing until the edge measures 2.5 cm / 1 inch or the desired length.

Bind off all sts using the Sewn Tubular Bind Off, or other stretchy bind off method of your choice.

Work the second leg similarly.

FINISHING

Weave in all remaining yarn ends. Wet block to measurements.

Abbreviations

BO	Bind off	p	Purl
BOR	Beginning of the round	pm	Place marker
CC	Contrasting color	RS	Right side
CO	Cast on	sl	Slip the next st as if to purl
DPN	Double pointed needles	sm	Slip marker
k	Knit	ssk	Slip, slip, knit the slipped sts together through the back loop
k2tog	Knit 2 sts together	st(s)	Stitch(es)
m1L	Make 1 knit st (left-leaning)	WS	Wrong side
MC	Main color		

Chart 1

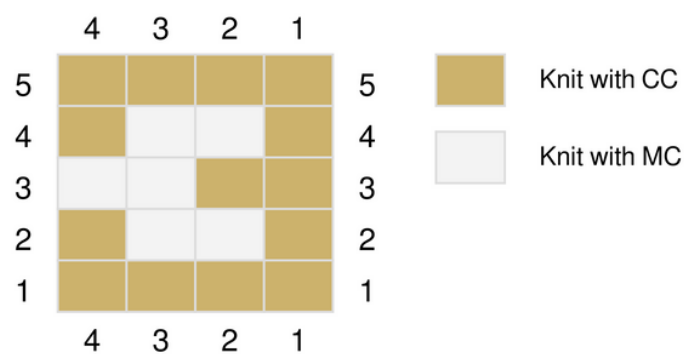


Chart 2 (size 1 only)

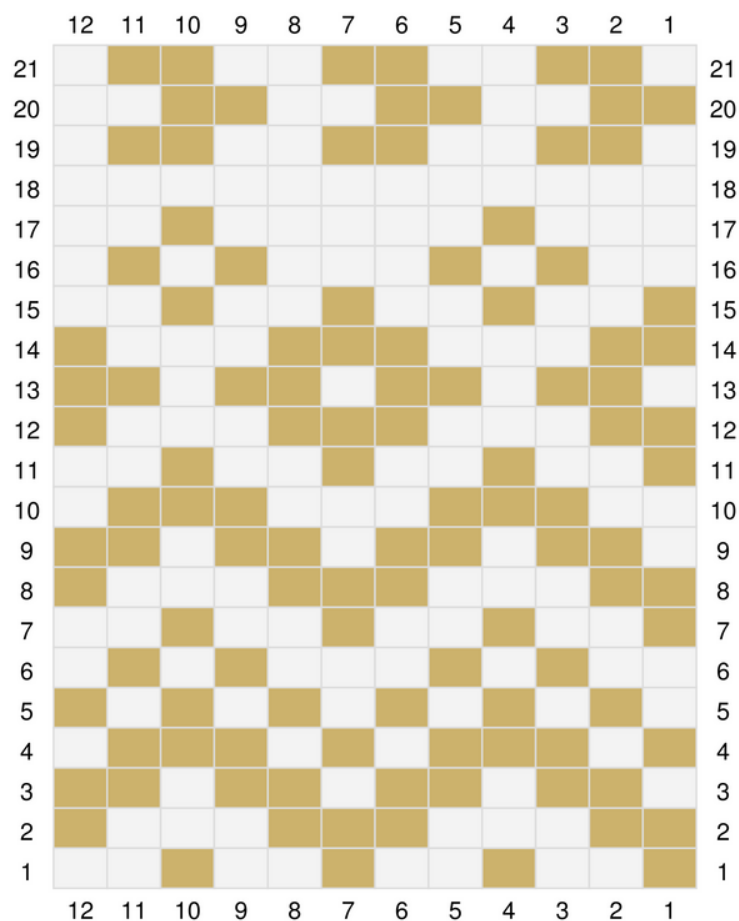


Chart 3 (size 2 only)

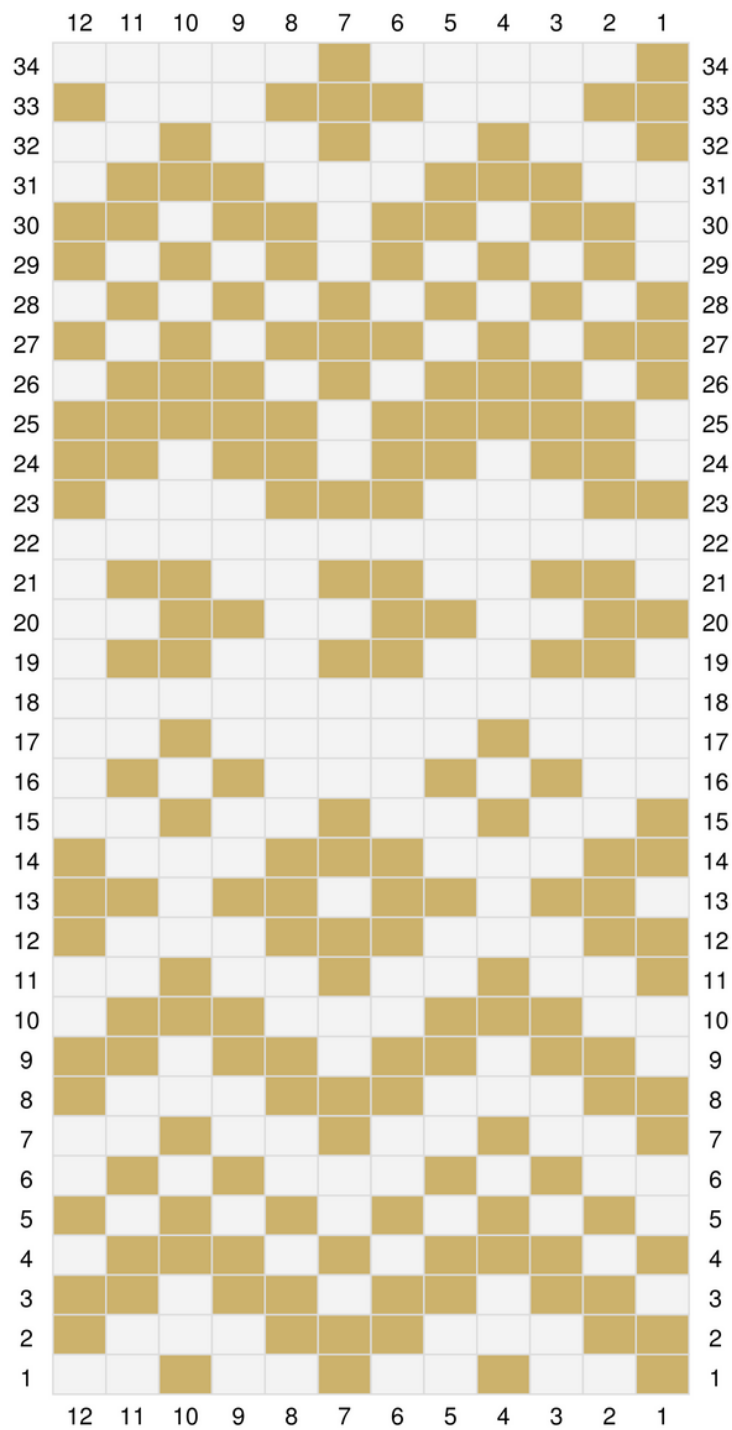


Chart 4 (size 3 only)

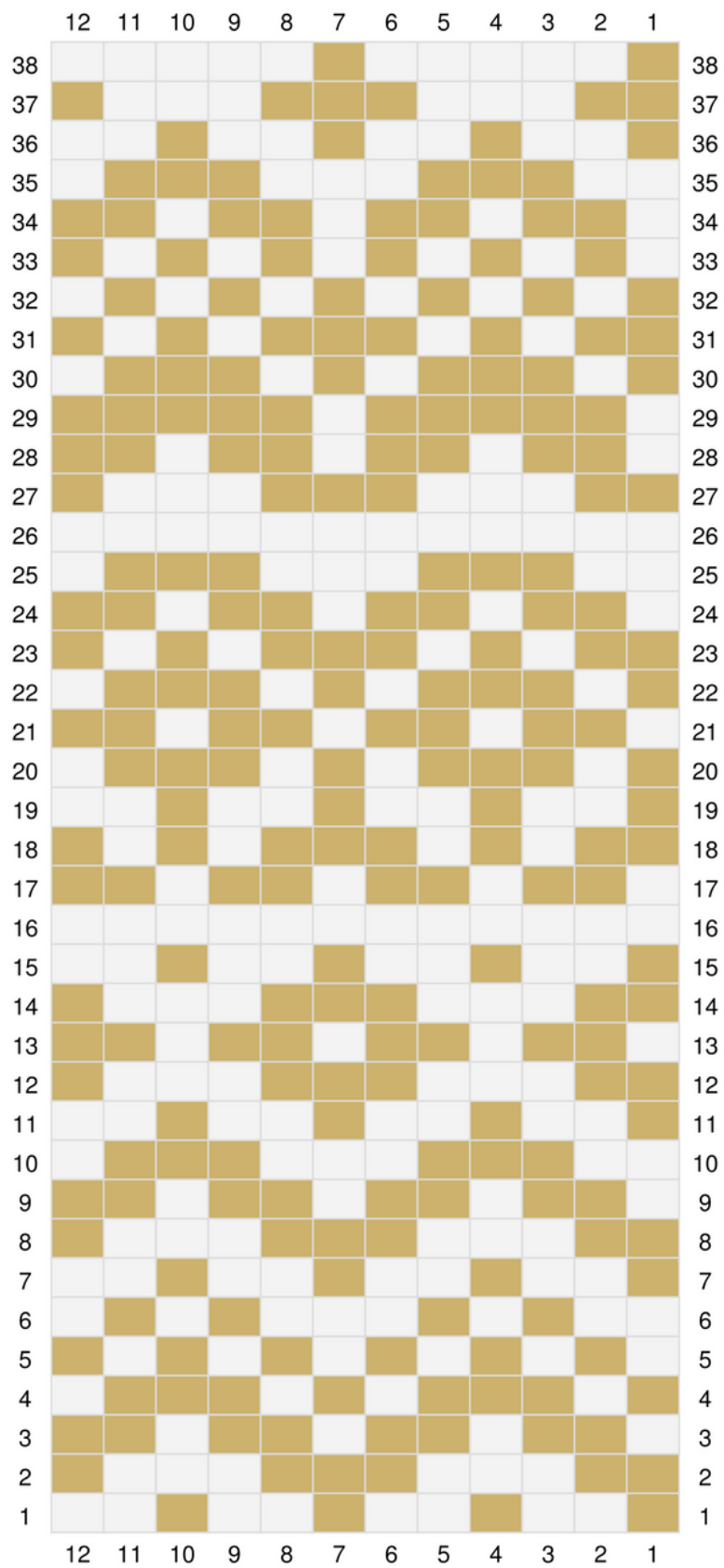
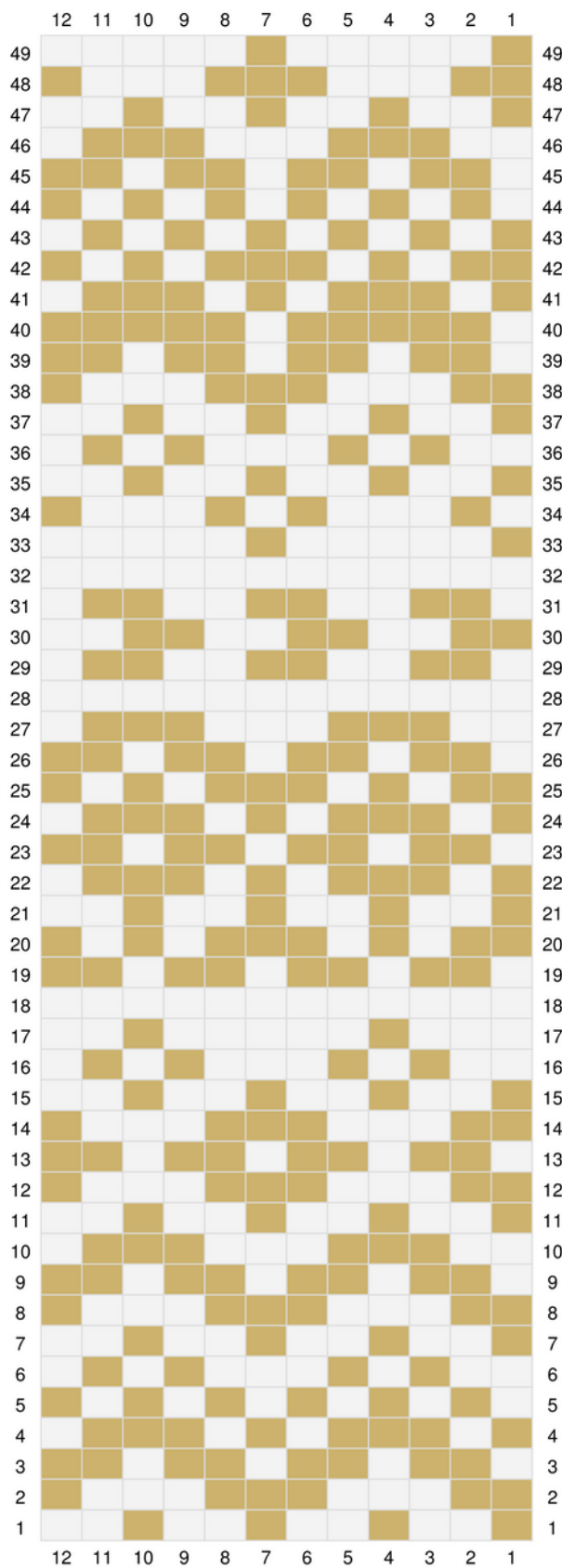


Chart 5 (size 4 only)





Thank you for knitting my patterns!

If you need inspiration for your next project, check out my other knitting patterns on Ravelry:

<https://www.ravelry.com/designers/sari-nordlund>

Follow Sari's Instagram for inspiration

https://www.instagram.com/sari_n/

Subscribe to Sari's YouTube channel for behind the scenes material

<https://www.youtube.com/c/SariNordlund/featured>