

THE FISHBONE BEANIE

A knitting pattern by

SRD Handmades

Email: stephdespres@hotmail.com

Instagram: @srd_handmades

Facebook: SRD Handmades



Please feel free to contact me with any questions.

Happy knitting



This pattern is the property of SRD Handmades. Distributing or copying this pattern without permission from SRD Handmades is not permissible. You may use this pattern to create and sell your finished product. Pattern credit must be given to SRD Handmades. I absolutely love to see your finished works so please tag your social media photos with #fishbonebeanie or #srdhandmades or @srd_handmades

Materials:

- ❖ Any DK or light worsted weight yarn in two contrasting colours.
- ❖ US Size 7 | 4.5 mm 16" circular knitting needles
- ❖ US Size 7 | 4.5 mm DPNs for decrease if desired or use magic loop method
- ❖ 5 stitch markers
- ❖ 1 tapestry needle
- ❖ Scissors

Gauge:

- ❖ 21 stitches x 26 rows in 4" blocked

Abbreviations:

- ❖ CO: cast on
- ❖ K: knit
- ❖ K2tog: knit 2 stitches together
- ❖ DPN: double pointed needles
- ❖ BOR: beginning of round
- ❖ SM: stitch marker
- ❖ MC: main colour
- ❖ CC: contrast colour

Notes:

- ❖ This pattern is sized for adult S/M. Increase needle size to adjust gauge for larger size or added additional stitches between charts.
- ❖ **Charts are worked right to left from the bottom up.**
- ❖ I recommend carrying your floats every 5 – 8 stitches.
- ❖ Tension is crucial but difficult to balance. If your tension is too tight your work will pucker and will not stretch, even when blocked. If your tension is too loose your stitches will look very sloppy. For best results, ensure you do not "bunch" your stitches while knitting. Allow natural spacing between each stitch.
- ❖ The brim will tend to curl on you as the hat increases in length. This can be reduced by blocking your finished hat.
- ❖ Not all yarns in the same weight class are the same gauge. You may need to change needle sizes to achieve the desired sizing.

Pattern:

Using german twisted cast on method, CO 96 stitches in MC and join to knit in the round.

Place BOR SM.

Rows 1 – 4: Knit

Row 5: K4, SM, using CC K per Chart 1, SM, K8, SM, using CC K per Chart 2, SM, K to end of round.

Rows 6 – 31: K4, K per Chart 1, K8, K per Chart 2, K to end of round.

Continue knitting in MC for 4 inches. (for a more fitted style, reduce length - approx. 3 inches)

Decrease (change to DPN or magic loop when necessary):

Row 1: K6, K2tog, repeat to end of round.

Row 2: K

Row 3: K5, K2tog, repeat to end of round.

Row 4: K

Row 5: K4, K2tog, repeat to end of round.

Row 6: K

Row 7: K3, K2tog, repeat to end of round.

Row 8: K

Row 9: K2, K2tog, repeat to end of round.

Row 10: K

Row 11: K1, K2tog, repeat to end of round.

Row 12: K

Cut yarn leaving a 10" tail and thread through tapestry needle. Slip all stitches onto tapestry needle and cinch to close hat. Thread needle through cinched stitches several times to secure. Thread needle through center of cinch so that it is inside of the hat. Tie knot to secure. Cut yarn. Weave ends.

Chart 2

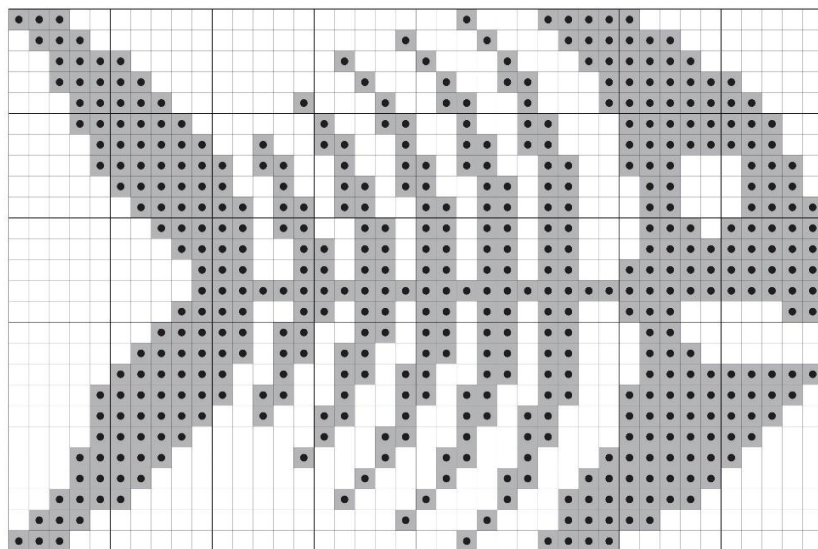
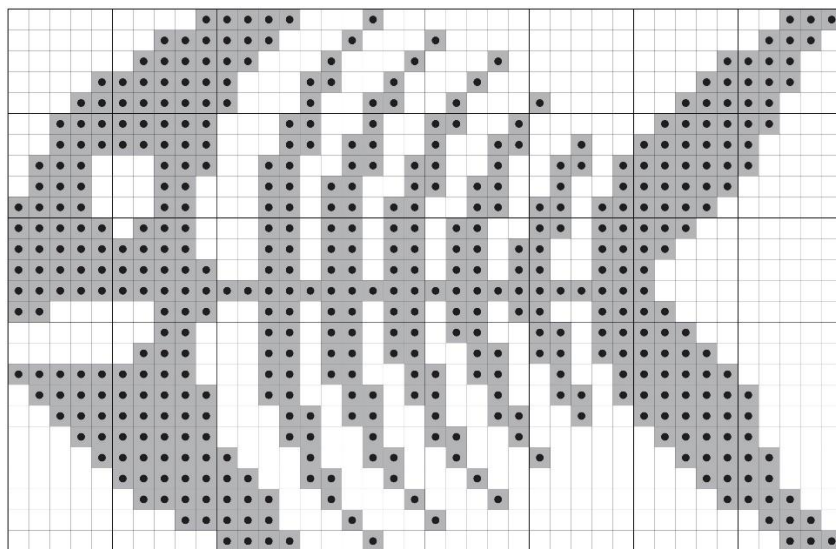


Chart 1



Use CC for shaded areas.

