



SLEEPING BEAUTY SWEATER

Design Elenor Mortensen

SIZES

1, 2, 3 (4, 5, 6) 7, 8, 9, 10

Bust circumference of the finished sweater: approx. 37.8, 40.1, 42.5 (45.2, 47.6, 50.3) 52.7, 55.1, 57.8, 60.2'' / 96, 102, 108 (115, 121, 128) 134, 140, 147, 153cm

Because of the all-over colourwork pattern, the sweater is not as stretchy as a plain piece. I therefore recommend a positive ease of at least 4.7'' / 12cm.

Gauge

25 sts x 32 rnds = 4 x 4'' / 10 x 10 cm in Fair Isle pattern and in plain stockinette with 3.5mm ndl, after wet blocking.

Should the gauge for the colourwork pattern be bigger or smaller, adapt the size of the needles.

MATERIAL

Yarn

MC: Miss la Motte Merino Single Linen, col. Rustic Linen (366m / 100gr): approx. 820, 885, 951 (1037, 1093, 1181 1265, 1356, 1443, 1531 yards / 750, 810, 870 (940, 1000, 1080) 1160, 1240, 1320, 1400m

CC: colour gradient yarn (for instance from Spincycle or Schoppel, 366m / 100gr): approx. 382, 415, 448 (481, 524, 578) 612, 656, 710, 765 yards / 350, 380, 410 (440, 480, 520) 560, 600, 650, 700m

Or any favourite yarn matching the gauge.

Needles

3mm, 40cm (or a set of 3mm double-pointed needles) and 80cm-long circular needles

3.5mm, 40cm (or a set of 3.5mm double-pointed needles) and 80cm-long circular needles

3 stitch markers, 1 tapestry needle

ABBREVIATIONS AND EXPLANATIONS

st/sts	stitch(es)
k	knit
p	purl
yo	yarn over
rnd/rnds	round(s)
RS	right side of the work
WS	wrong side of the work
ndl	needle(s)
M / sM / pM	stitch marker / slip marker / place marker
MC	main colour (background colour)
CC	contrasting colour
inc / dec	increase(s) / decrease(s)
BoR	beginning of the round / slip BoR marker
k2tog	knit two stitches together
k3tog	knit three stitches together
skp	slip 1 st, knit 1 st, pass slipped st over
m1r	right-leaning increase. With the left needle, lift the running thread (of the specified colour) between the stitch just worked and the next stitch from back to front and knit into the front loop (twisted st).
m1l	left-leaning increase. With the left needle, lift the running thread (of the specified colour) between the stitch just worked and the next stitch from front to back, and knit through the back loop (twisted st).
DS	DS: double stitch, used in German short rows. Knit the indicated number of stitches, turn your work. Bring the yarn to the front of the work, slip the first stitch as if to purl, then bring the yarn up and over the right needle to the back and pull tight to create a double stitch. When you reach this double stitch later, knit or purl through both legs of the stitches as if it were one stitch.
GSR (German short rows)	see explanations for the DS and tips below.
* _____ *	repeat the instructions between the asterisks to the end of the round.

GENERAL INFORMATION

Colourwork

The motif is knit using the Fair Isle stranded colourwork technique with two colours. The yarn not in use must be carried loosely across the back of the work and caught by twisting it with the working yarn every 5 sts maximum. On the following round, make sure to twist the yarns in a different place to avoid little bumps showing on the right side.

German Short Rows

You can find a detailed tutorial on how to work German short rows here:

<https://www.youtube.com/watch?v=4Bz7YhiXuA8>

How to knit the underarm increases

After separating the sleeves, the yoke pattern continues on the front and back and on the sleeves.

This means that the underarm increases at the front and back must be integrated into the pattern.

At the front and back the increases result in a complete pattern repeat.

On the sleeves, in addition to the 11, 13, 15 (17, 19, 21) 23, 25, 27, 29 underarm sts, 2 sts are picked up from the right and the left side of the body to create more upper arm width. To do this, pick up and knit 2 sts from the running yarn on each side (see figure 1).



Fig.1

For the sleeves, there is no complete pattern repeat over the underarm increases. On rnds 43 to 48 the pattern must then be integrated accordingly. If you want to continue the pattern over the entire sleeve, I recommend always purling the first underarm increase (the st after the BoR). This creates a fake seam, on the right and left of which you can position the pattern.

INSTRUCTIONS

Yoke:

With the MC and the shorter 3mm ndl (do not hold the ndl double), cast on 104, 104, 108 (108, 108, 112) 112, 116, 120, 120 sts tightly (I recommend the longtail cast-on) and join in the round, being careful not to twist the sts.

Knit 1 rnd, pM. The beginning of the rnd is in middle back and further referred to as BoR.

Rnd 2: p to end

Rnd 3: k to end

Rnd 4 (inc rnd):

Size 1: *k4, m1r* 12 times, k8, *m1r, k4* 12 times, BoR (24 inc)

Sizes -, 2, 3 (4, 5, 6) 7, 8, 9, 10: *k4, m1r* to BoR (26, 26, 27 (27, 27, 28) 28, 29, 30, 30 inc)

There are now 128, 130, 135 (135, 135, 140) 140, 145, 150, 150 sts on the ndl.

Rnds 5 to 7: k.

Rnd 8: change to 3.5mm ndl and knit through.

Rnd 9 (German short rows):

GSR1 (RS): k33, 33, 35 (35, 35, 37) 37, 39, 41, 41, turn.

(WS): DS, p to M, sM, p33, 33, 35 (35, 35, 37) 37, 39, 41, 41, turn.

GSR2 (RS): DS, k to M, sM, k to DS, kDS, k4, turn.

(WS): DS, p to M, sM, p to DS, pDS, p4, turn.

GSR3 (RS): DS, k to M, sM, k to DS, kDS, k4, turn.

(WS): DS, p to M, sM, p to DS, pDS, p4, turn.

GSR4 (RS): DS, knit to M, sM.

Rnd 10: k, knitting the DS as you reach them.

Rnd 11: k

Rnd 12 (inc rnd):

Size 1: * k4, m1r* 32 times, BoR (32 inc)

Size 2: k3, *m1r, k4* 31 times, m1r, k3, BoR (32 inc)

Size 3, 4, 5: k3, *m1r, k4* 33 times, BoR (33 inc)

Size 6, 7: *m1r, k4* 35 times, BoR (35 inc)

Size 8: k3, *m1r, k4* 35 times, m1r, k2, BoR (36 inc)

Sizes 9, 10: k3, *m1r, k4* 36 times, m1r, k3, BoR (37 inc)

There are now 160, 162, 168 (168, 168, 175) 175, 181, 187, 187 sts on the ndl.

Rnds 13 to 16: k

Rnd 17 (inc rnd):

Size 1: *k20, m1r* 8 times, BoR (8 inc)

Size 2: k10, *m1r, k11* 13 times, m1r, k9, BoR (14 inc)

Size 3: *k10, m1r* 16 times, k8, BoR (16 inc)

Size 4: *k7, m1r* 24 times, BoR (24 inc)

Size 5: k7, *m1r, k5* 32 times, k1, BoR (32 inc)

Size 6: k8, *m1r, k5* 33 times, k2, BoR (33 inc)

Size 7: k8, *m1r, k4* 41 times, k3, BoR (41 inc)

Size 8: k7, *m1r, k4* 43 times, k2, BoR (43 inc)

Size 9, 10: k4, *m1r, k5* 36 times, k3, BoR (36 inc)

There are now 168, 176, 184 (192, 200, 208) 216, 224, 223, 223 sts on the ndl.

Rnds 18 and 19: k

Sizes 1, 2, 3 (4, 5, 6) 7, 8, -, - only:

Continue with **All sizes**.

Sizes -, -, - (-, -, -) -, -, 9, 10 only:

Rnds 20 and 21: k

Rnd 22 (inc rnd):

Size 9: k16, *m1r, k24* 8 times, m1r, k15, BoR (9 inc)

Size 10: k8, *m1r, k13* 16 times, m1r, k7, BoR (17 inc)

There are now -, -, - (-, -, -) -, -, 232, 240 sts on the ndl.

Rnd 23: k

All sizes:

Now work the CHART.

The pattern is repeated 21, 22, 23 (24, 25, 26) 27, 28, 29, 30 times around.

As indicated in the chart, two increases are worked in each pattern repeat on rnds 3, 7, 12 and 19. After rnd 19 there are 336, 352, 368 (384, 400, 416) 432, 448, 464, 480 sts on the ndl.

Work rnds 1 to 36 once, then repeat rnds 37 to 42 to the desired length, and finally work rnds 43 to 48 once.

In the meantime, in one of the 42nd rnds, after approx. 7.4, 7.7, 7.9 (8.2, 8.6, 9) 9.4, 9.8, 10.2, 10.6 ''/ 19, 19.5, 20 (21, 22, 23) 24, 25, 26, 27cm into the yoke depth (measured at the centre front), separate

the sleeves (see also Knitting the underarm inc on p.2).

Incorporate the underarm increases into the pattern as appropriate.

Separate the sleeves






k55, 58, 61 (64, 67, 70) 73, 76, 79, 82 sts (1st half-back),
transfer 59, 61, 63 (65, 67, 69) 71, 73, 75, 77 sts for the first sleeve on a piece of scrap yarn with a tapestry needle, or on a stitch holder,
cast on 11, 13, 15 (17, 19, 21) 23, 25, 27, 29 new sts in pattern,
k109, 115, 121 (127, 133, 139) 145, 151, 157, 163 sts (front),
transfer 59, 61, 63 (65, 67, 69) 71, 73, 75, 77 sts for the second sleeve on a piece of scrap yarn with a tapestry needle, or on a stitch holder,
cast on 11, 13, 15 (17, 19, 21) 23, 25, 27, 29 new sts in pattern,
k54, 57, 60 (63, 66, 69) 72, 75, 78, 81 sts (second half-back), BoR.

Front and back

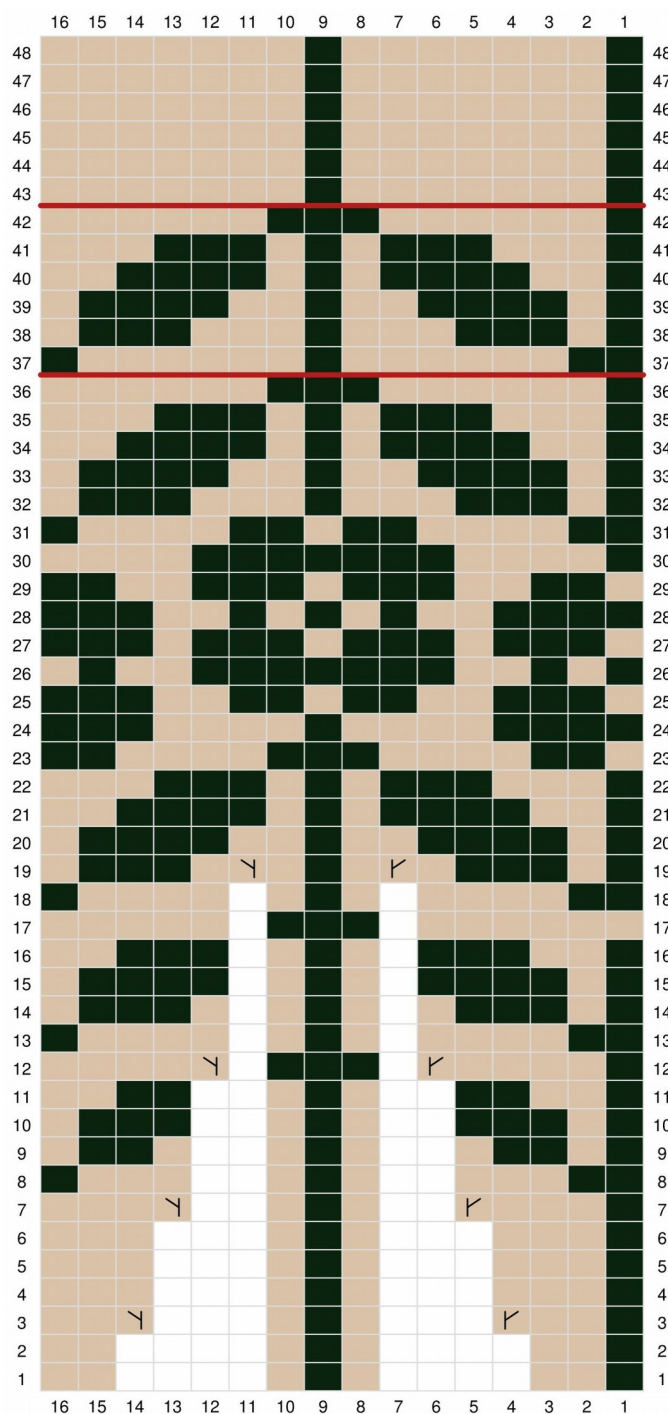
There are now 240, 256, 272 (288, 304, 320) 336, 352, 368, 384 sts on the ndl.

Continue to knit the chart in the round until your work measures approx. 11.8'' / 30cm or the desired length of pattern repeats.
Break CC yarn and knit 2 more rnds in MC, or to the desired sweater length minus 1.2'' / 3cm.

LEGEND

	MC / beige
	CC / green
	m1r
	m1l
	no stitch

CHART



Bottom hem

All sizes:

Change to 3mm ndl.

Rnd 1 (dec rnd):

All sizes: *k14, k2tog* 15, 16, 17 (18, 19, 20) 21, 22, 23, 24 times, BoR (15, 16, 17 (18, 19, 20) 21, 22, 23, 24 dec).

There are now 225, 240, 255 (270, 285, 300) 315, 330, 345, 360 sts on the ndl.

Rnds 2 to 12: k

Sizes 1, -, 3 (-, 5, -) 7, -, 9, - only:

Rnd 13: k3tog, *yo, k2tog* to BoR, yo (1 dec).

Continue with All sizes

Sizes -, 2, - (4, -, 6) -, 8, -, 10 only:

Rnd 13: *yo, k2tog* to BoR.

All Sizes:

Rnds 14 to 24: k

Rnd 25: bind off by knitting all the sts.

Fold the hem band inwards along the eyelet row and sew it to the first hem band rnd.

As an alternative, you can also fold the eyelet row inwards and bind it off by knitting it with the first hem band rnd.

Sleeves

With shorter 3.5mm circular needles, or a set of 3.5mm double-pointed needles, and beginning at the centre of the underarm, pick up and knit 6, 7, 8 (9, 10, 11) 12, 13, 14, 15 sts out of the underarm edge, then pick up and knit 2 more sts out of the side edge (see How to knit the underarm increases on p.2), being careful not to create any hole.

Transfer the 59, 61, 63 (65, 67, 69) 71, 73, 75, 77 sts on hold for the sleeve back on the ndl and knit them in pattern, then pick up and knit 2 sts out of the side edge and 5, 6, 7 (8, 9, 10) 11, 12, 13, 14 more sts at the second half of the underarm (be careful not to create any hole). Join in the round and pM (BoR). There are now 74, 78, 82 (86, 90, 94) 98, 102, 106, 110 sts on the ndl.

Work rnds 43 to 48 from the chart, incorporating the underarm sts accordingly.

After rnd 48, break CC yarn.

Knit 8 more rnds, then begin the dec for the sleeve shaping.

Rnd 1: k to 3 sts before M, k2tog, k1, sM.

Rnd 2: k1, skp, k to M.

Repeat these 2 dec rnds:

Size 1: 4 x every 19 and 20 rnds

Size 2: 5 x every 16 and 17 rnds

Size 3: 6 x every 15 and 16 rnds

Size 4: 8 x every 12 and 13 rnds

Size 5: 10 x every 9 and 10 rnds

Size 6: 10 x every 9 and 10 rnds

Size 7: 11 x every 8 and 9 rnds

Size 8: 12 x every 7 and 8 rnds

Size 9: 13 x every 6 and 7 rnds more times.

Once the dec are done, there are 64, 66, 68 (68, 68, 72) 74, 76, 80, 82 sts on the ndl.

Continue to work in stockinette in the round until the sleeve measures the desired length minus 1.2'' / 3cm.

Cuffs

Change to 3mm ndl.

Rnd 1 (dec rnd):

Size 1: k6, *k2tog, k8* 5 times, k2tog, k6, BoR (6 dec)

Size 2: k7, *k2tog, k8* 5 times, k2tog, k7, BoR (6 dec)

Sizes 3, 4, 5: k8, *k2tog, k8* 5 times, k2tog, k8, BoR (6 dec)

Size 6: *k2tog, k7* 8 times, BoR (8 dec)

Size 7: k5, *k2tog, k7* 7 times, k2tog, k4, BoR (8 dec)

Size 8: k2, *k2tog, k7* 8 times, k2tog, k2, BoR (9 dec)

Size 9: k4, *k2tog, k7* 8 times, k2tog, k4, BoR (9 dec)

Size 10: k5, *k2tog, k7* 8 times, k2tog, k5, BoR (9 dec)

There are now 58, 60, 62 (62, 62, 64) 66, 67, 71, 73 sts on the ndl.

Rnds 1 to 12: k

Rnd 13: *yo, k2tog* to BoR.

Rnds 14 to 24: k

Rnd 25: bind off by knitting all the sts.

Fold the cuff inwards along the eyelet row and sew it to the first cuff rnd.

As an alternative, you can also fold the eyelet row inwards and bind it off by knitting it with the first cuff rnd.

FINISHING

Cut and carefully weave in all yarn ends.
Wet block your knitting.

If desired, you can embroider individual flower motifs using duplicate stitch, or embroider some new ones (see photo 2)



Abb.2

MEASUREMENTS:

A: Bust circumference

37.8, 40.1, 42.5 (45.2, 47.6, 50.3) 52.7, 55.1,
57.8, 60.2'' /
96, 102, 108 (115, 121, 128) 134, 140, 147, 153cm

B: upper arm width

11.6, 12.2, 12.8 (13.6, 14.2, 14.7) 15.3, 15.9, 16.7,
17.3'' /
29.5, 31, 32.5 (34.5, 36, 37.5) 39, 40.5, 42.5, 44cm

C: Length from underarm

approx. 13'' / 33cm

D: Sleeve length from underarm

approx. 17.7'' / 45cm

E: total length

approx. 55, 56, 57 (58, 59, 60) 61, 62, 63, 64cm

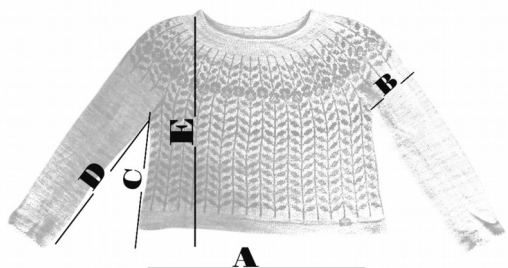
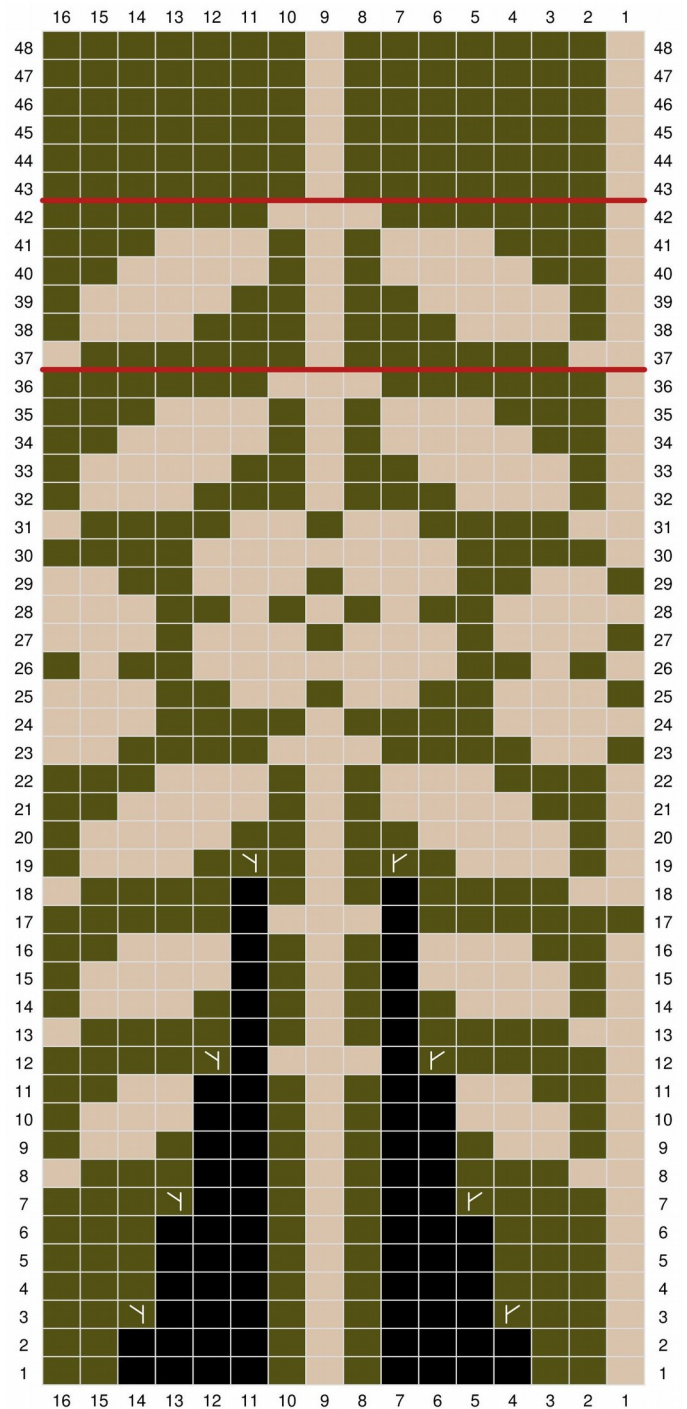


CHART in reversed contrast



I will be very happy to see photos of your sweater on Instagram using hashtag #sleepingbeautysweater

English translation: Emmanuelle B.
IG @marquirdelise
Emmanuelise on Ravelry