

# WOODLAND DOODLES

## CHART EXPANSION PACK



**THE WOODLAND DOODLE** is inspired by quaint and whimsical woodland scenery. Full of all your favorite flora and fauna, this collection is perfect for curling up with a cup of tea in a cozy cottage.

**24 Woodland Doodle Motifs** included are trees, mountains, rivers, wildflowers, possum, mallard, stag, deer, fox, racoon, skunk, bluejay, robin, owls, beavers, and more!

This is a [Doodle Series Pattern](#), which means it includes micro charts intended to be used as mix-and-match colorwork motifs throughout your project. Or you can substitute ANY other [Doodle Chart Collections](#) on any other [Base Doodle Pattern](#) shape.

#PKCWoodlandDoodle @pacificknitco

### Need some Inspo?

Check out more Ravelry project examples here:



# HOW TO DOODLE WITH YARN

## HOW DOODLE PATTERNS WORK

Doodles by Pacific Knit Co. are modern, modular patterns that allow makers to **design and knit exactly what they want** within an easy-to-follow framework. Because every motif works with every pattern shape, Doodle Patterns enable **endless customization within one pattern!**

**Base Pattern Shape + Charts + Colors = Unique Design!**

## DOODLE FRAMEWORK



**Choose your Pattern:** Cowls, Hats, Socks, & more! Charts work on any [Base Doodle pattern!](#)



**Choose your Charts:** Pick a [theme](#) or grab a few Doodles to mix-and-match!

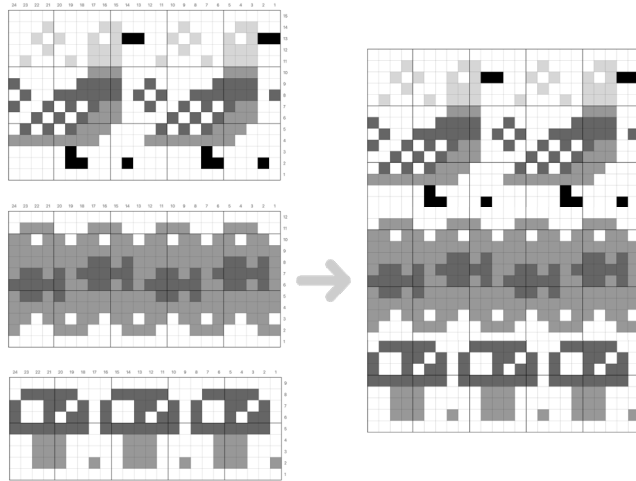


**Choose your Yarn & Colors:** Grab a main color & accents or create the perfect stash buster!



**Start Knitting!** Choose your first motif and colors and simply start knitting!

## BUILD YOUR CUSTOM CHARTS:



## TIPS FOR DOODLES:

- Head to [Ultimate Guide: How to Doodle with Yarn](#) for a guided walkthrough or use the [FREE Doodle Workbook](#) to get it as a PDF!
- **Don't know where to start?** Copy the sample! After choosing your chart set, recreate the sample by using the pre-made charts included in each pattern.
- **Need inspiration?** Check out the hashtags on Instagram or Ravelry project pages to see what others have done with their Doodles!
- **Ready to design your own?** Print and cut out charts to rearrange, draw your charts on graph paper, or learn how to use your [FREE Blank Doodle Master Chart](#).
- **Not sure what colors to use?** To build a cohesive palette, start with a neutral main color as a baseline, and add 2-3 gradient fades to it for contrast colors. Check out the [3-Step Palette](#) for more!
- **Wondering about yardage?** This pattern is the perfect stash buster: changing yarns with every chart repeat to use just 5-10g per color. You can also learn how to [Weigh and Estimate Leftover Yardage!](#)
- **Worried about contrast?** [Check Contrast with the Black and White Filter](#) on your phone to ensure your color choices have enough variation in values.
- **Want your motifs to stand out?** Make sure to hold the contrast color dominant for each chart to make it pop off the background.
- **Not ready for 3-color charts?** Try using [Duplicate Stitch](#) for the third color in a row, especially if that row only has 2-3 sts in that color.
- **Questions?** We are here for you! Reach out at [support@pacificknitco.com](mailto:support@pacificknitco.com) for pattern help.

## DOODLE LIBRARY

Scan here to shop the complete **Doodle Chart & Pattern Library** or visit [www.pacificknitco.com](http://www.pacificknitco.com)

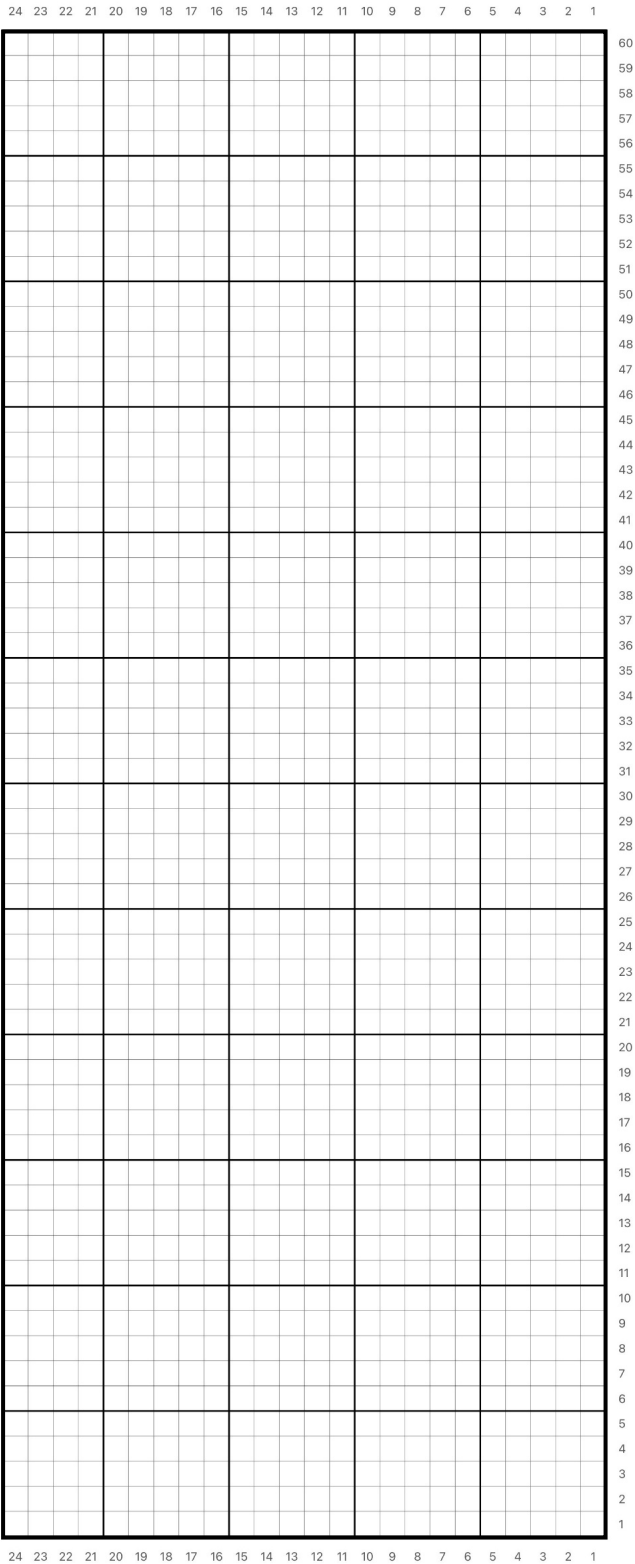


## FREE DOODLE WORKBOOK

**Don't know where to start?** Grab the free workbook for guided tour to design and build your project!



# MY DOODLE CHART



## Are you ready to start designing your own chart?

This blank master chart enables you to **re-draw all of your selected Doodle charts in order** and with your preferred contrast/colors!

**PRO TIP:** Print and cut out your Doodle Charts and re-arrange on this master chart – they are the same scale so they work together!

Follow the guidelines on [Ultimate Guide: Choosing & Arranging your Doodle Charts](#). Remember, you can shift charts left or right, if necessary, add or eliminate MC rounds between charts, repeat charts, or even design your own motifs!

**This chart is set up for 60 rounds of colorwork**, or approx. 10 in [25 cm] height with gauge at 6 sts x 6 rounds per 1 in [2.5 cm]. Create as many charts as necessary to reach desired finished height.

Use your actual palette colors in **My Chart Key** below to better visualize your final design.

**Want some examples?** Head over to [How to Use the Blank Doodle Master Chart](#) for more info!

**Need another Blank Chart?** Download one [here](#)!

## MY CHART KEY

☐ \_\_\_\_\_

☐ \_\_\_\_\_

☐ \_\_\_\_\_

☐ \_\_\_\_\_

☐ \_\_\_\_\_

☐ \_\_\_\_\_

☐ \_\_\_\_\_

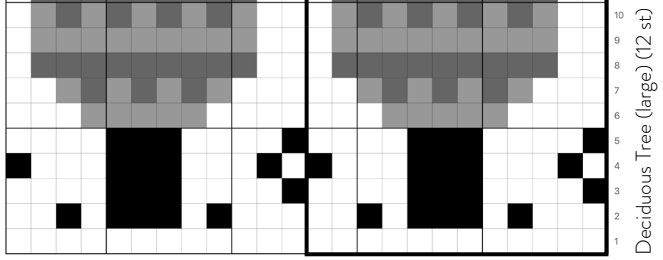
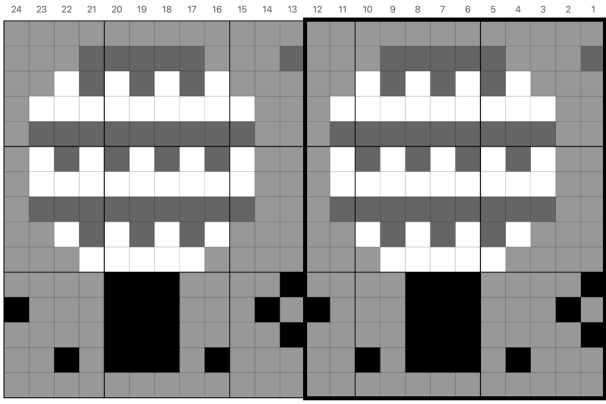
☐ \_\_\_\_\_

☐ \_\_\_\_\_

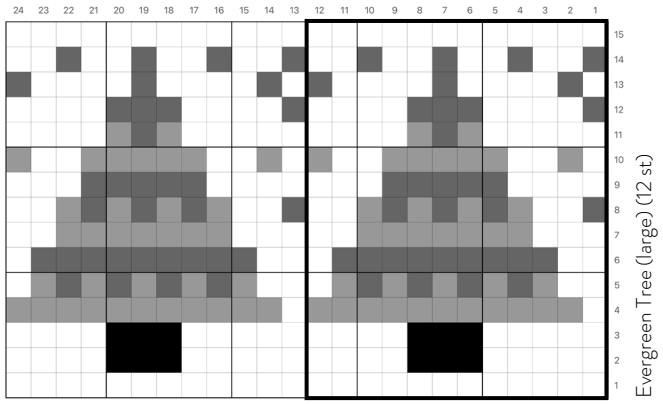
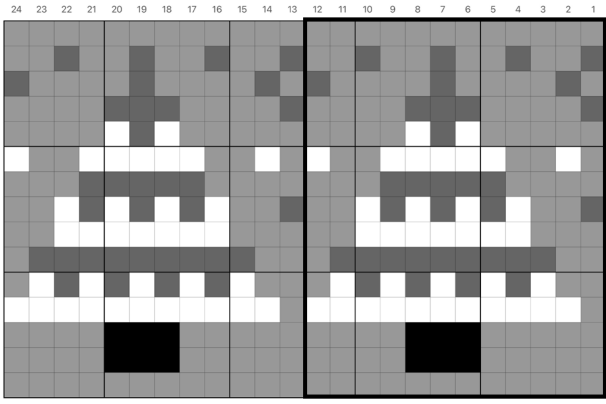
# WOODLAND DOODLE CHARTS

Chart Key    Knit in **darker** color    Knit in **lighter** color    Knit in **accent** color    Knit in **accent** color

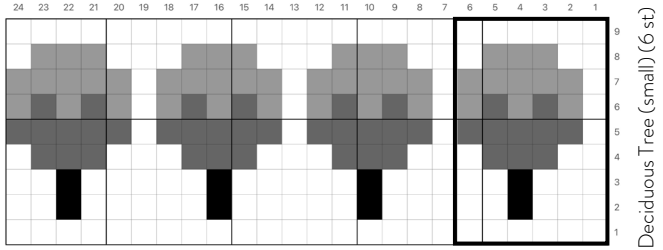
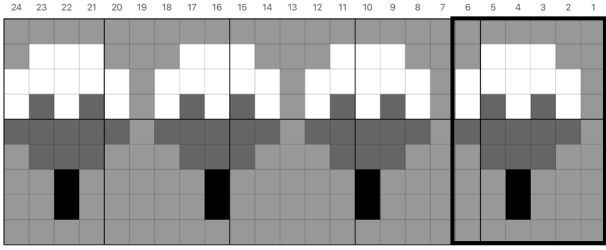
Deciduous Tree (large) (12 st)



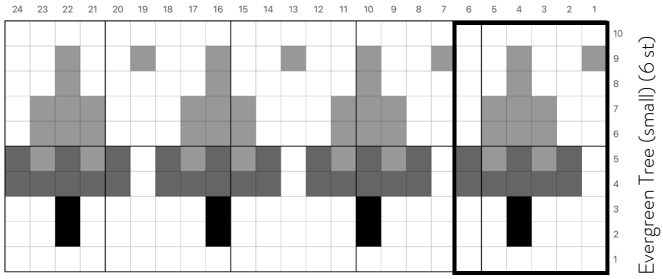
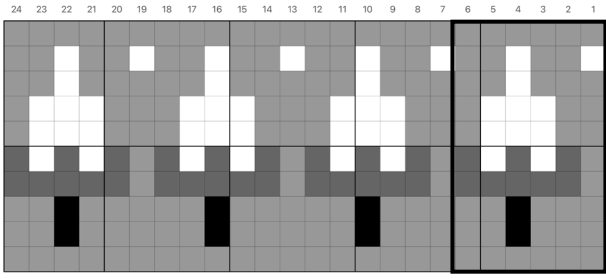
Evergreen Tree (large) (12 st)



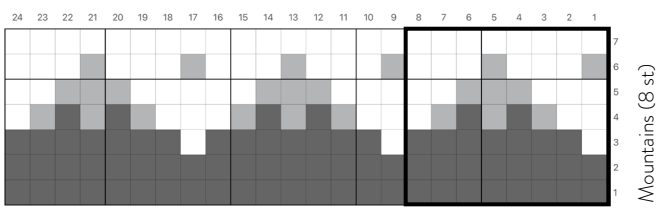
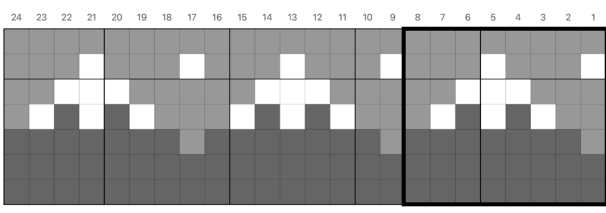
Deciduous Tree (small) (6 st)



Evergreen Tree (small) (6 st)



Mountains (8 st)

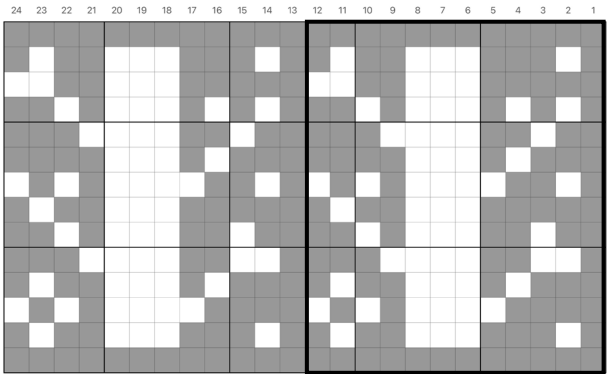




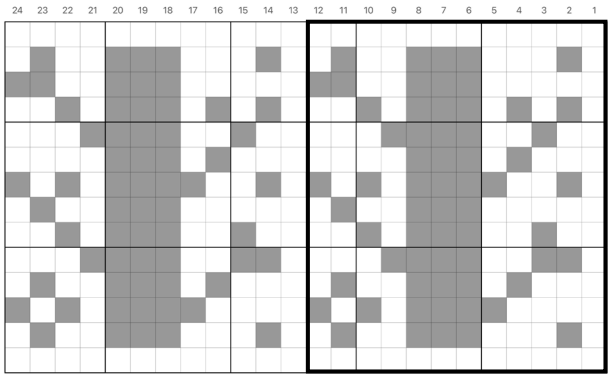
# WOODLAND DOODLE CHARTS

Chart Key    Knit in **darker** color    Knit in **lighter** color    Knit in **accent** color

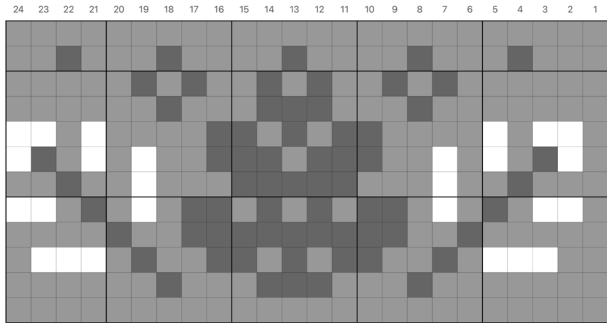
Tree Branches (12 st)



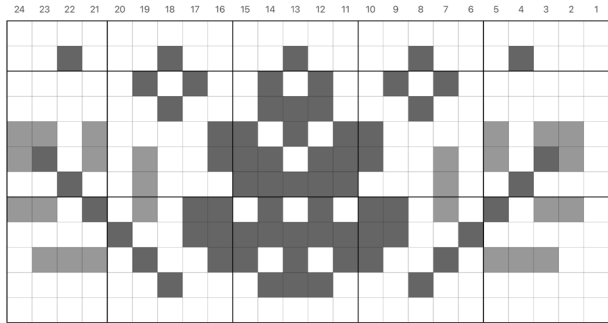
Tree Branches (12 st)



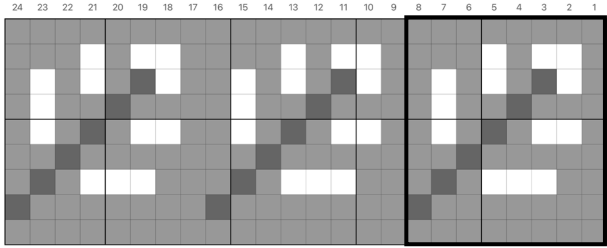
Pine Bough (24 st)



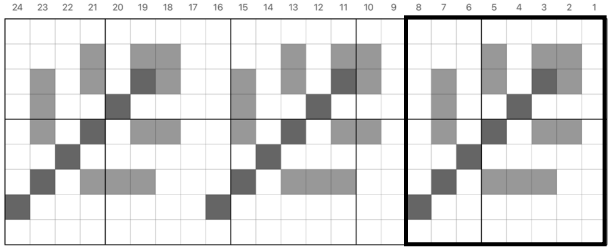
Pine Bough (24 st)



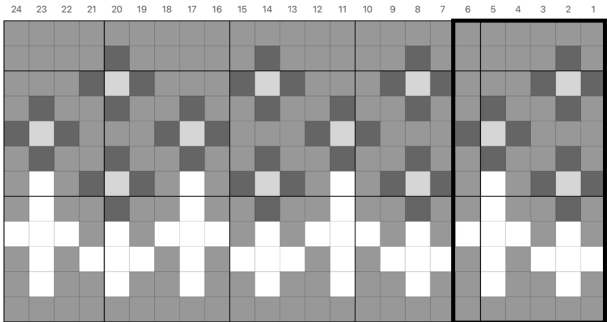
Pine Branch (8 st)



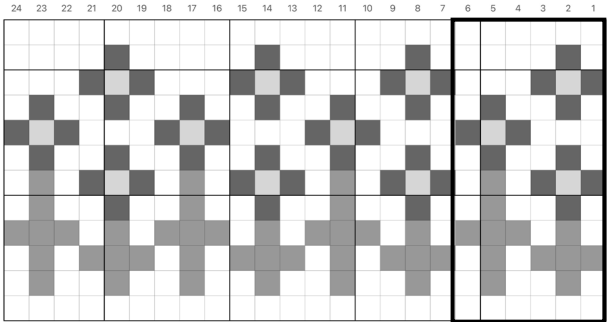
Pine Branch (8 st)



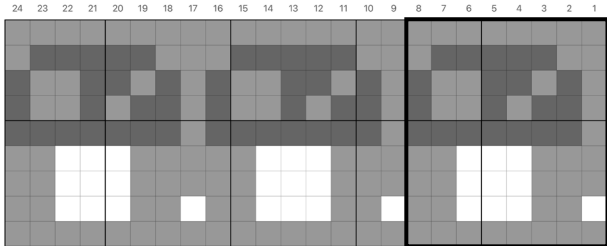
Wildflowers (6 st)



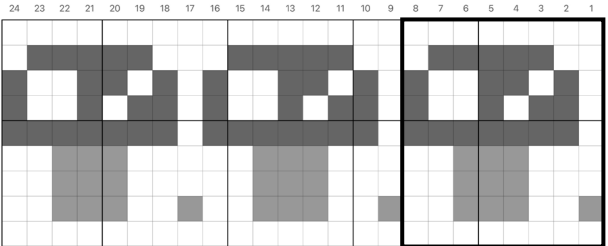
Wildflowers (6 st)



Mushroom (8 st)

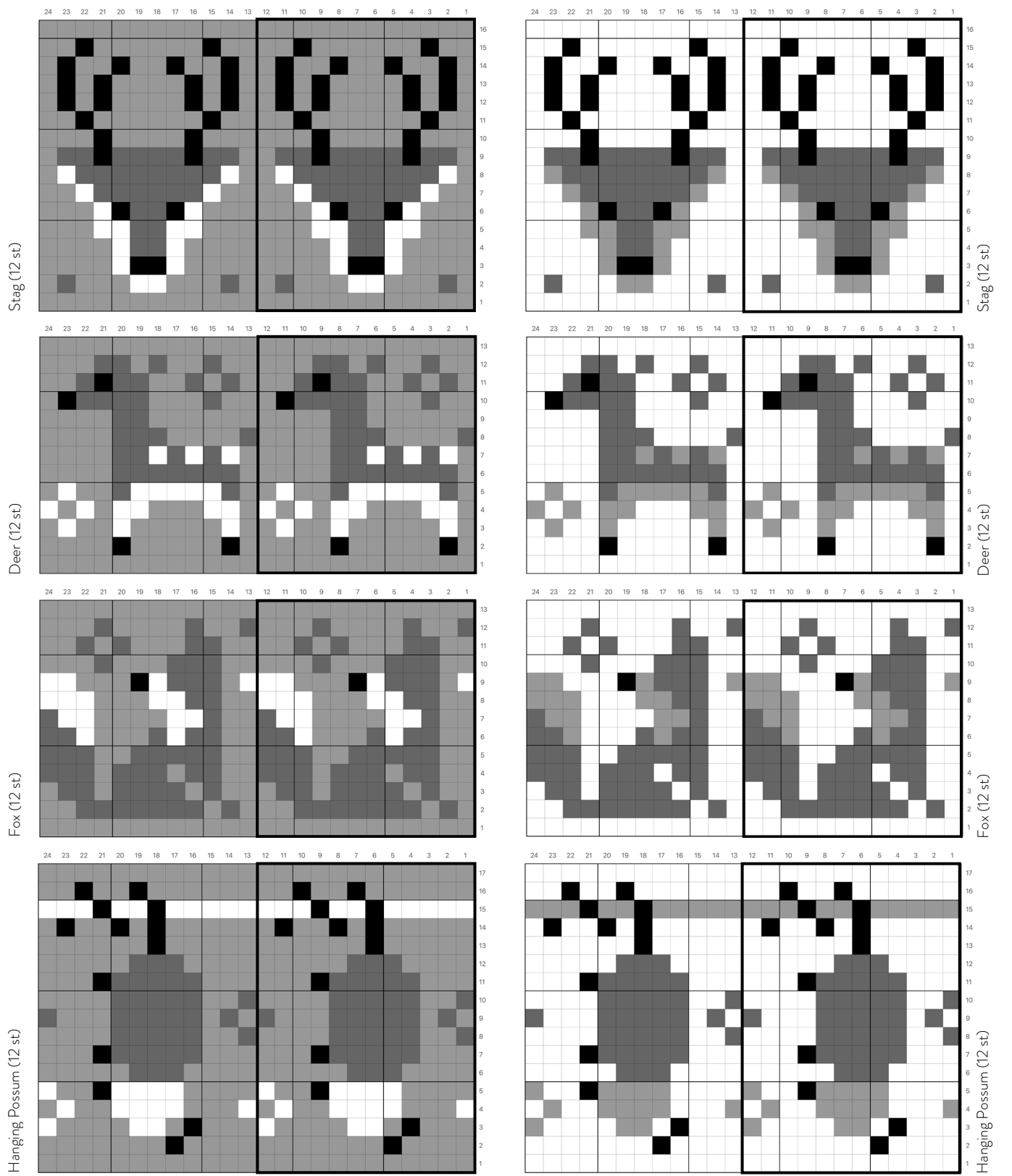


Mushroom (8 st)



# WOODLAND DOODLE CHARTS

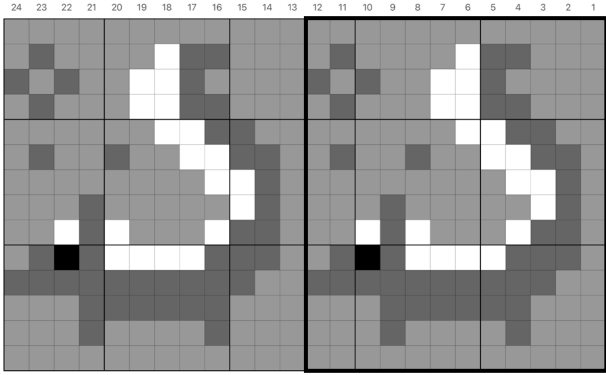
Chart Key    Knit in **darker** color    Knit in **lighter** color    Knit in **accent** color    Knit in **accent** color



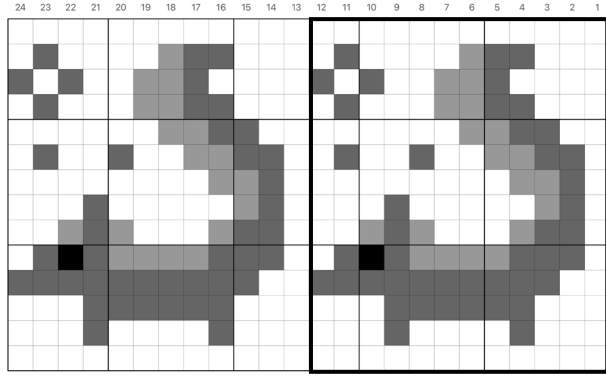
# WOODLAND DOODLE CHARTS

Chart Key    Knit in **darker** color    Knit in **lighter** color    Knit in **accent** color    Knit in **accent** color

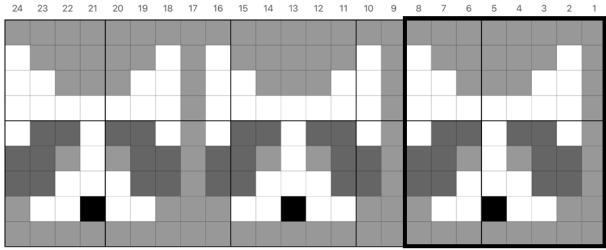
Skunk (12 st)



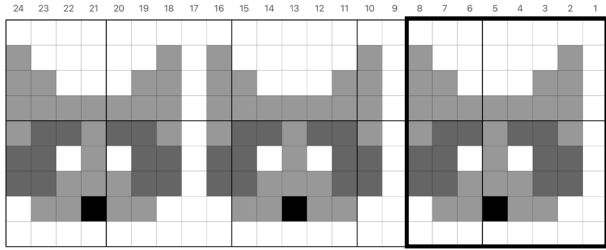
Skunk (12 st)



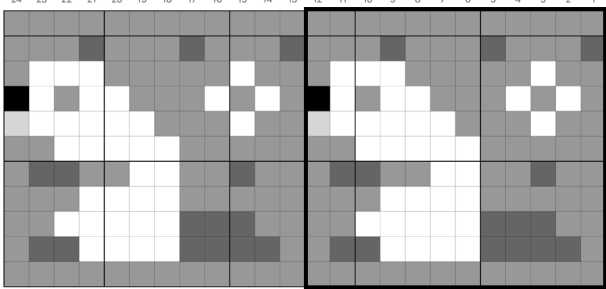
Raccoon (8 st)



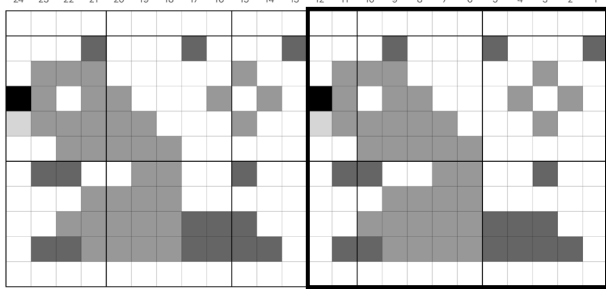
Raccoon (8 st)



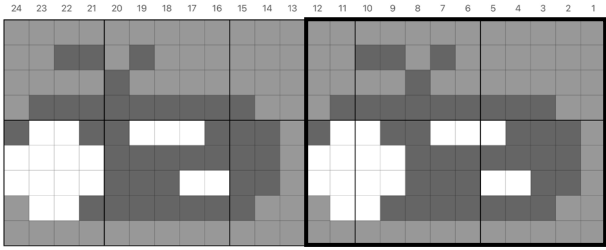
Beaver (12 st)



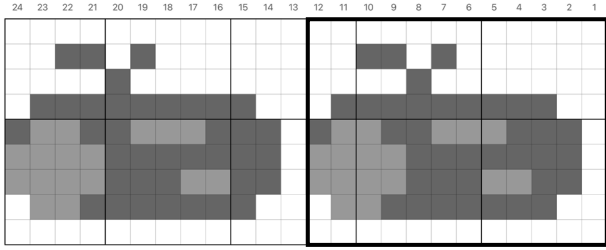
Beaver (12 st)



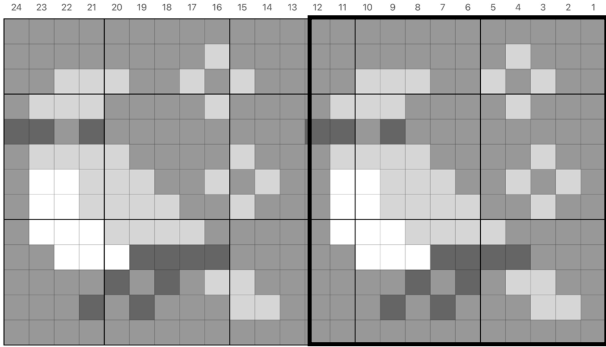
Fallen Log (12 st)



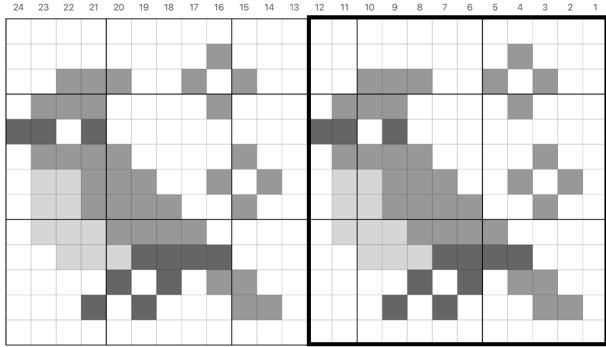
Fallen Log (12 st)



Bluejay (12 st)



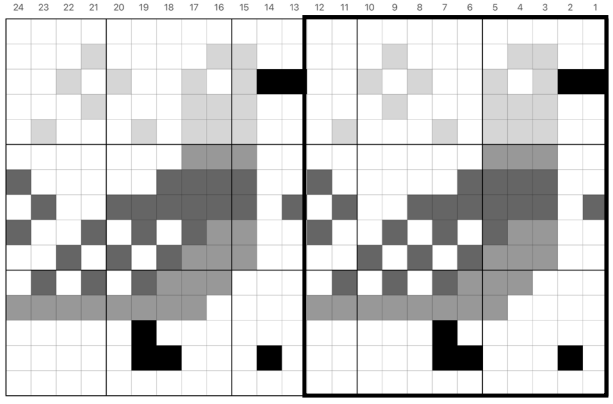
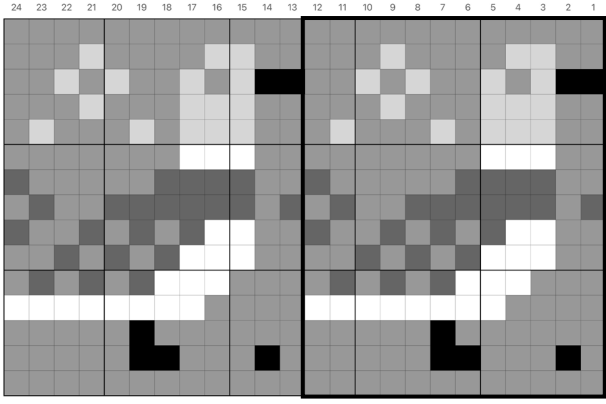
Bluejay (12 st)



# WOODLAND DOODLE CHARTS

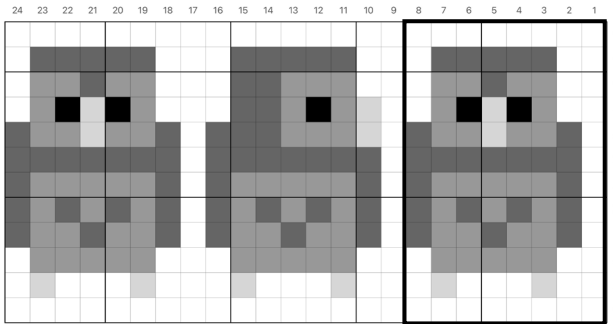
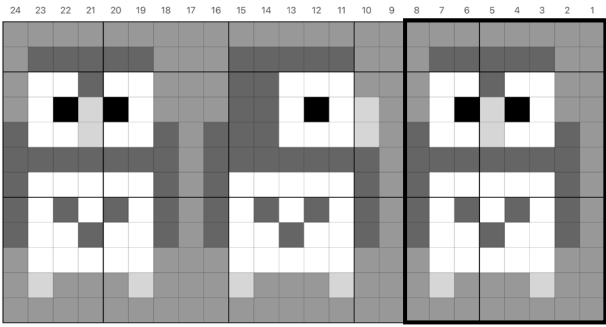
Chart Key    Knit in **darker** color    Knit in **lighter** color    Knit in **accent** color    Knit in **accent** color

Mallard Duck (12 st)



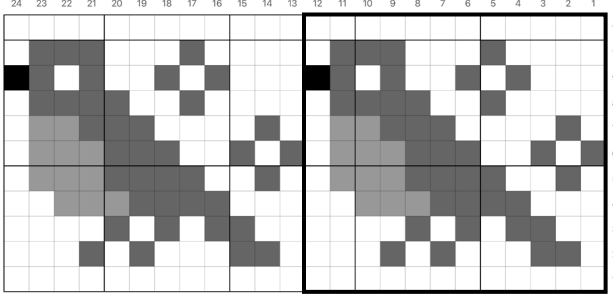
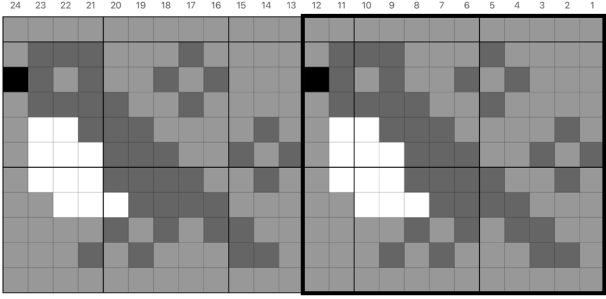
Mallard Duck (12 st)

Owl (8 st)



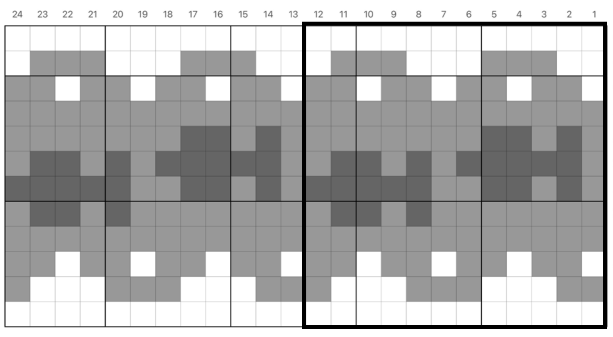
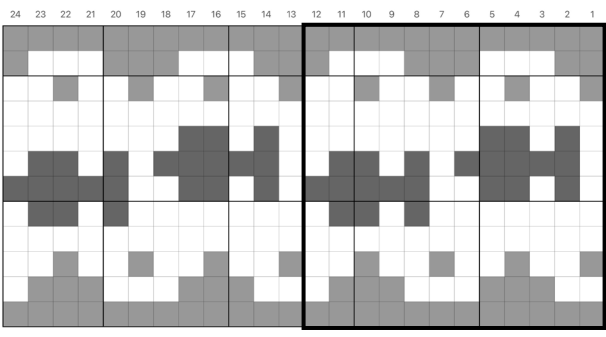
Owl (8 st)

Robin (12 st)



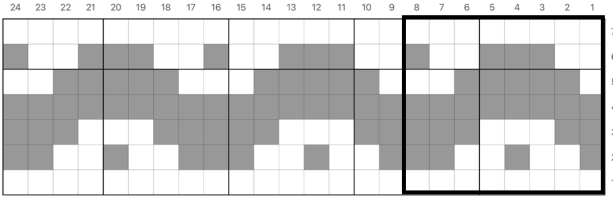
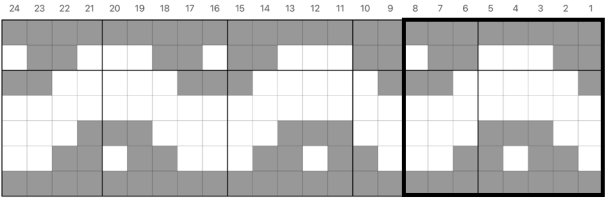
Robin (12 st)

Fish in River (12 st)



Fish in River (12 st)

River or Path (8 st)



River or Path (8 st)



# WELCOME TO DOODLES!

Through whimsical, modular colorwork patterns, **Doodles by Pacific Knit Co.** aims to empower knitters to learn new techniques and get excited about exploring their creativity and creating their own unique design.

**Doodle Patterns empower creativity within a structure** so you eliminate the guesswork, while building valuable skills you can use again and again.

- **Modular Base Patterns**
- **Mix-and-Match Colorwork Charts**
- **Easy Pattern Modifications**

When I first started knitting, I spent hours learning how to alter a pattern (and do the math!) to create exactly what I wanted. Now I want to encourage adventurous beginners to take on a new challenge with me!

Every Doodle pattern provides you with **opportunities for customization in colorwork and construction, built right in**, so you don't have to struggle - just choose exactly the right option for you!

**Each Doodle Theme is available in 3 formats**, so you can get the one that works for you:

- **Digital Pattern PDF** (full details and tutorials!)
- **Charts Only PDF** (perfect to add to anything!)
- **Doodle Card Decks** (portable and collectable cards!)

Be sure to tag me **@pacificknitco** in your posts!

## Pattern Usage and Rights:

This pattern and all charts located within are the exclusive copywrite of Pacific Knit Co. and are intended for personal use only. Charts may not be used and/or resold in personal designs or patterns. Finished items made from this pattern may be sold in limited quantities with credit for the pattern provided to Pacific Knit Co. Thank you for tagging me and my pattern when sharing on social media.

## Pattern Credits:

Design & Photos: Jamie Lomax, Pacific Knit Co.  
Yarn Support: Tara Roberts, Stranded by the Sea  
Sample Knit: Jamie Lomax



**Thank you for purchasing my pattern! Please email me for pattern support, questions, or general info.**



[www.pacificknitco.com](http://www.pacificknitco.com)



[PacificKnitCo](https://www.pacificknitco.com)



[@pacificknitco](https://www.pacificknitco.com)



[support@pacificknitco.com](mailto:support@pacificknitco.com)

## YOU MAY ALSO ENJOY:



**Camping Doodle**



**Autumn Doodle**