

DOG DOODLES

CHART EXPANSION PACK



THE DOG DOODLE is inspired wagging tails, floppy ears, and the pure joy of pups at play—this design celebrates everything we love about our canine companions.

24 Dog Doodle Motifs included are Corgis, Huskies, German Shepherds, Mastiffs, Samoyeds, Pugs, Dalmatians, Bassett Hounds, Shelties, Labradors, French Bulldogs, tennis balls, bones, fire hydrants, grass, leash, dog dish, dog house, paw prints, chewed homework, and more!

This is a [Doodle Series Pattern](#), which means it includes micro charts intended to be used as mix-and-match colorwork motifs throughout your project. Or you can substitute ANY other [Doodle Chart Collections](#) on any other [Base Doodle Pattern](#) shape.

#DogDoodleCowl @pacificknitco

Need some Inspo?
Check out more
examples here:



HOW TO DOODLE WITH YARN

HOW DOODLE PATTERNS WORK

Doodles by Pacific Knit Co. use modular patterns & whimsical colorwork motifs to inspire makers to design and knit their perfect project in an easy-to-follow structure.

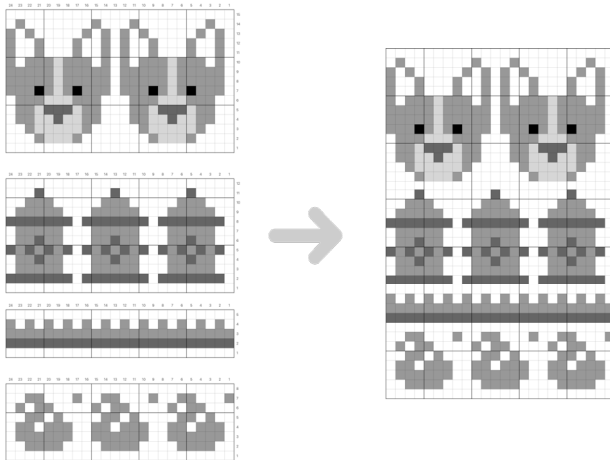
Base Pattern Shape + Charts + Colors = Unique Design!

Use ANY [Base Pattern](#) to add ANY Doodle charts. It's basically endless customization with just one pattern!

4 EASY STEPS TO DOODLE

- **Choose your Pattern:** Simply pick the base shape to create the canvas to build your design!
- **Choose your Motifs:** Dozens of whimsical colorwork motifs help you find your personal vibe! Mix-and-match and play with the order to create your design!
- **Choose your Yarn & Colors:** Learn to build your own color kit using single skeins, stash yarn, or leftovers, because you can use as little as 10g per color!
- **Start Knitting!** That's it!

BUILD YOUR CUSTOM CHARTS:



TIPS FOR DOODLES:

- Head to [Your Ultimate Guide for How to Doodle Patterns](#) for a guided walkthrough or use the [FREE Doodle Workbook](#) to get it as a PDF!
- **Don't know where to start?** Copy the sample! After choosing your chart set, recreate the sample by using the pre-made charts included in each pattern.
- **Need inspiration?** Check out the hashtags on Instagram or Ravelry project pages to see what others have done with their Doodles!
- **Ready to design your own?** Print and cut out charts to rearrange, draw your charts on graph paper or [My Doodle Chart](#) (pg. 8), or check out the Doodle Card Deck options available on www.pacificknitco.com.
- **Not sure what colors to use?** To build a cohesive palette, start with a neutral main color as a baseline, and add 2-3 gradient fades to it for contrast colors.
- **Wondering about yardage?** This pattern is the perfect stash buster: changing yarns with every chart repeat to use just 5-10g per color.
- **Worried about contrast?** Use the Black and White filter on your phone to ensure your color choices have enough variation in values between them.
- **Want your motifs to stand out?** Make sure to hold the contrast color dominant for each chart to make it pop off the background.
- **Not ready for 3-color charts?** Try using [Duplicate Stitch](#) for the third color in a row, especially if that row only has 2-3 sts in that color.
- **Questions?** We are here for you! Reach out at support@pacificknitco.com for pattern help.

DOODLE LIBRARY

Scan here to shop the complete **Doodle Chart & Pattern Library** or visit www.pacificknitco.com



FREE DOODLE WORKBOOK

Don't know where to start? Grab the free workbook for guided tour to design and build your project!



MY DOODLE CHART

[illegible]

Are you ready to start designing your own chart?

This blank master chart enables you to **re-draw all of your selected Doodle charts in order** and with your preferred contrast/colors!

PRO TIP: Print and cut out your Doodle Charts and re-arrange on this master chart – they are the same scale so they work together!

Follow the guidelines on [How to Doodle with Yarn](#) (pg. 2). Remember, you can shift charts left or right, if necessary, add or eliminate MC rounds between charts, repeat charts, or even design your own motifs!

This chart is set up for 60 rounds of colorwork, or approx. 10 in [25 cm] height with gauge at 6 sts x 6 rounds per 1 in [2.5 cm]. Create as many charts as necessary to reach desired finished height.

Use your actual palette colors in **My Chart Key** below to better visualize your final design.

Need another Blank Chart? Download one [here!](#)

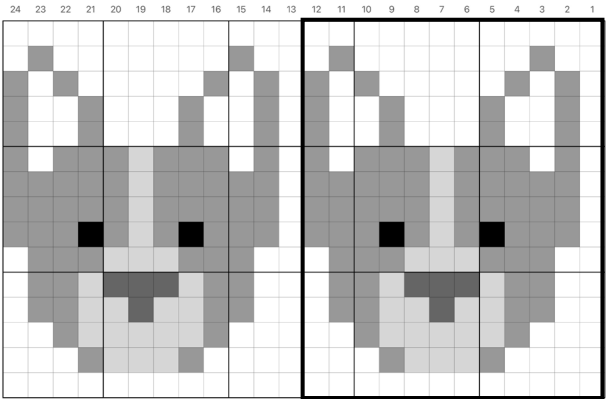
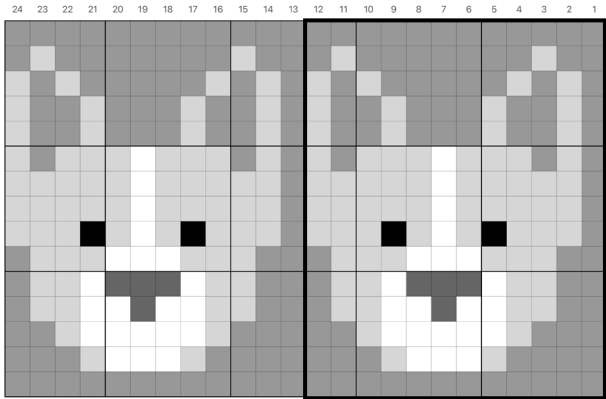
MY CHART KEY

[illegible]

DOG DOODLE CHARTS

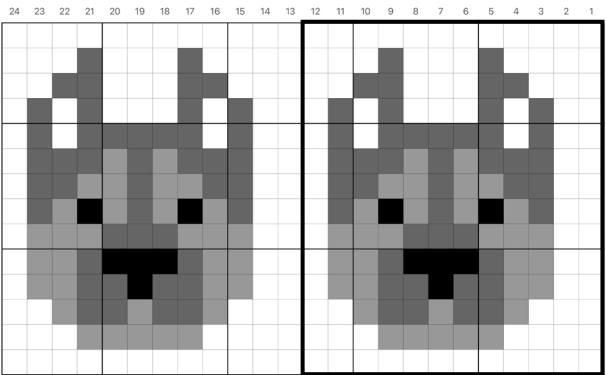
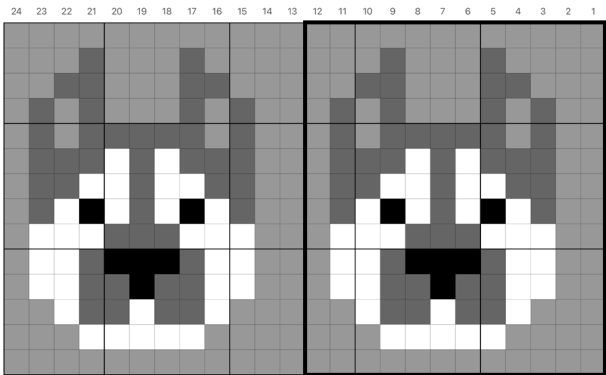
Chart Key  Knit in **darker** color  Knit in **lighter** color  Knit in **accent** color

Corgi (12 st)



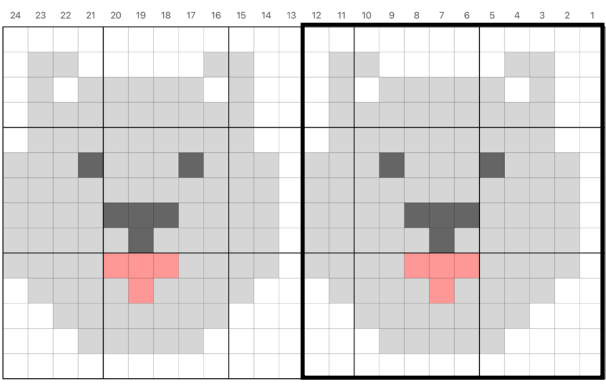
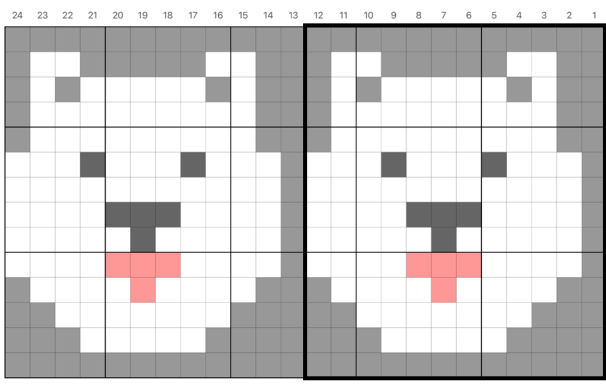
Corgi (12 st)

German Shepherd (12 st)



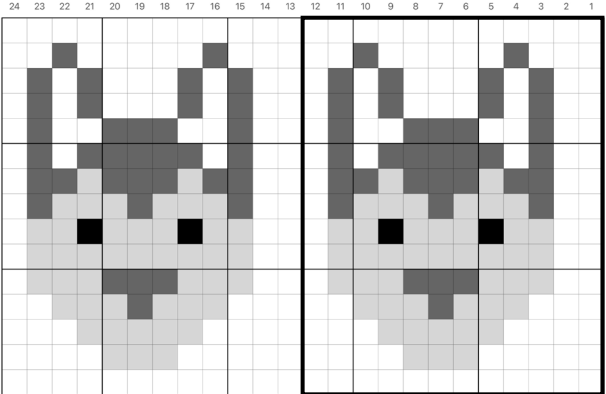
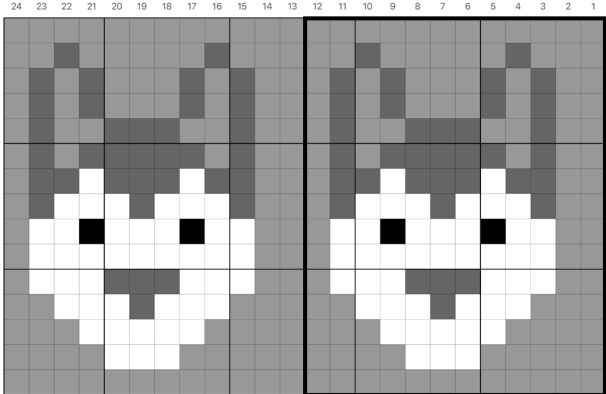
German Shepherd (12 st)

Samoyed (12 st)



Samoyed (12 st)

Husky (12 st)

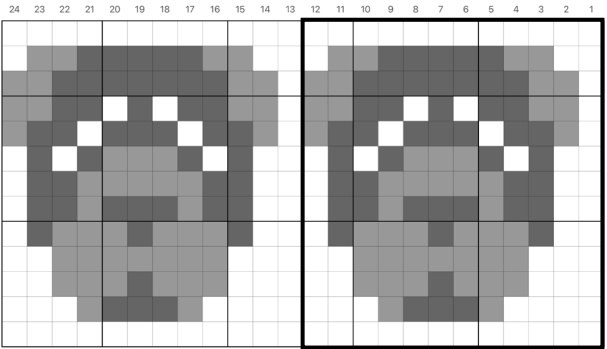
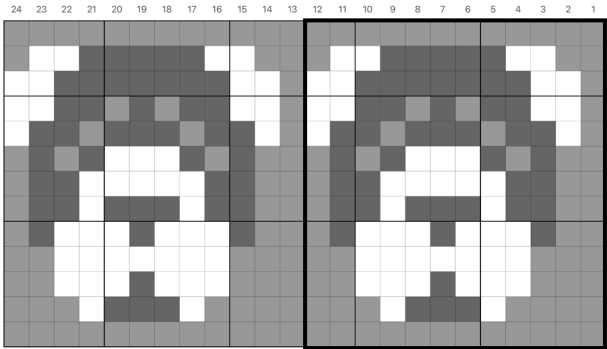


Husky (12 st)

DOG DOODLE CHARTS

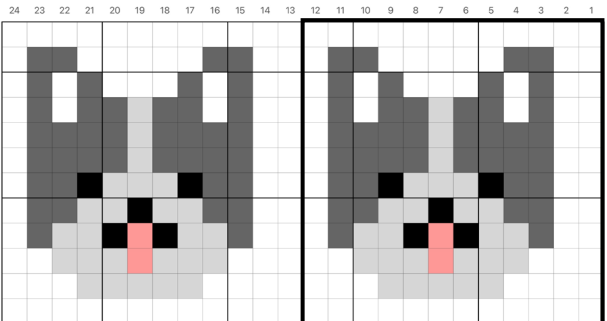
Chart Key  Knit in **darker** color  Knit in **lighter** color  Knit in **accent** color

Mastiff (12 st)



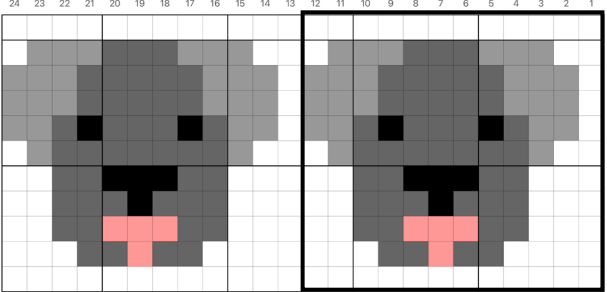
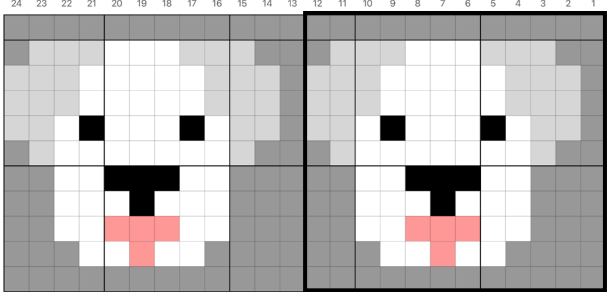
Mastiff (12 st)

French Bulldog (12 st)



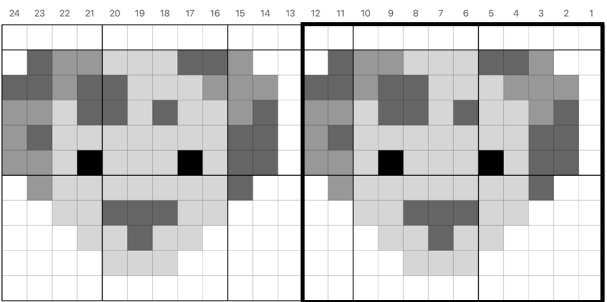
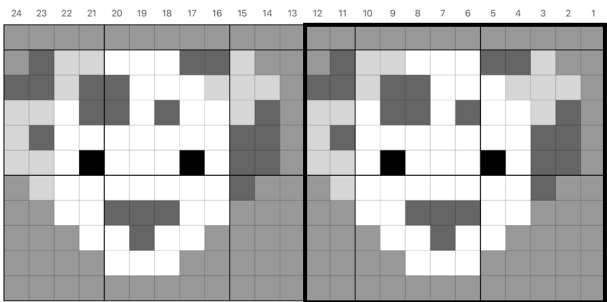
French Bulldog (12 st)

Labrador (12 st)



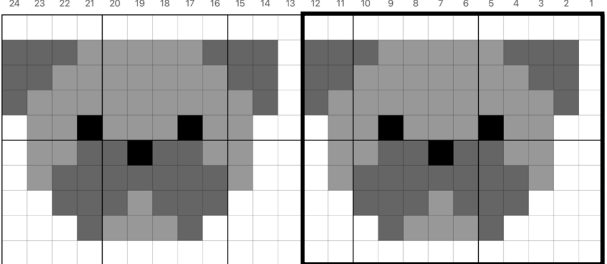
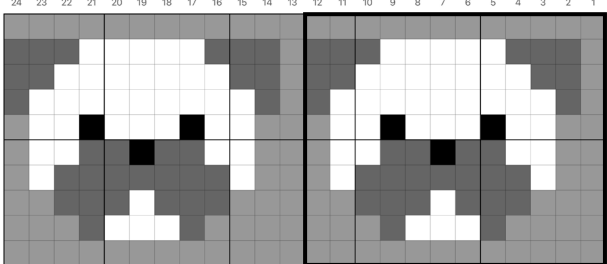
Labrador (12 st)

Dalmatian (12 st)



Dalmatian (12 st)

Pug (12 st)

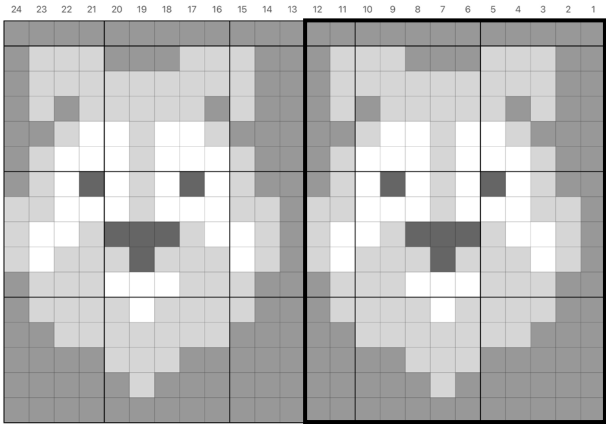


Pug (12 st)

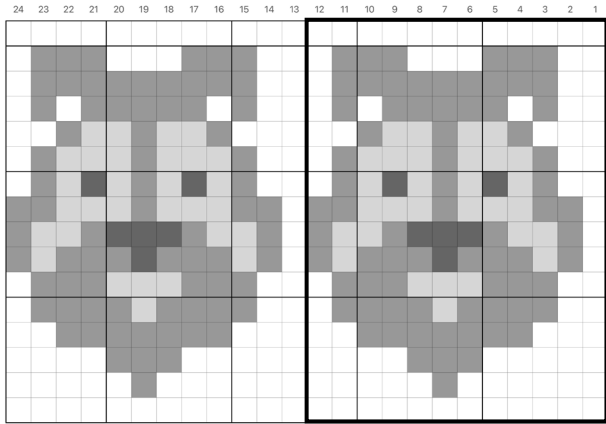
DOG DOODLE CHARTS

Chart Key  Knit in **darker** color  Knit in **lighter** color  Knit in **accent** color

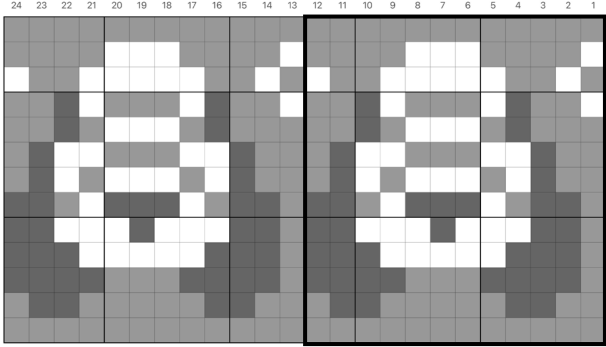
Sheltie (12 st)



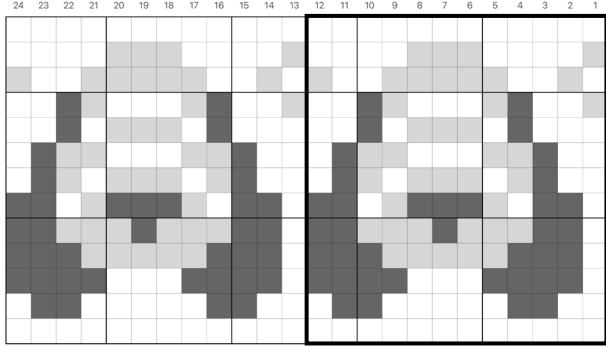
Sheltie (12 st)



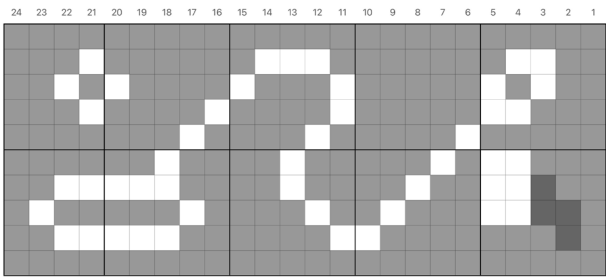
Basset Hound (12 st)



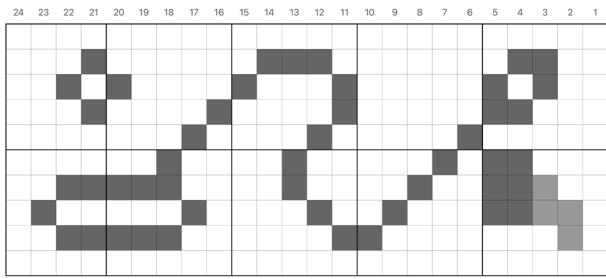
Basset Hound (12 st)



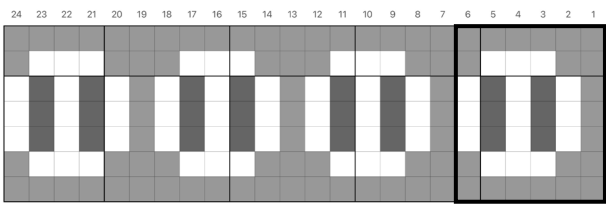
Leash (24 st)



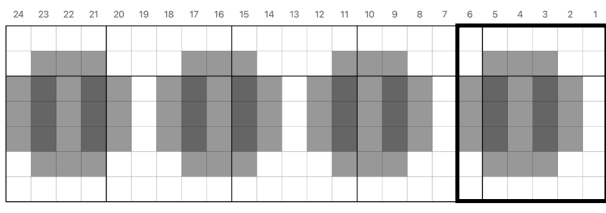
Leash (24 st)



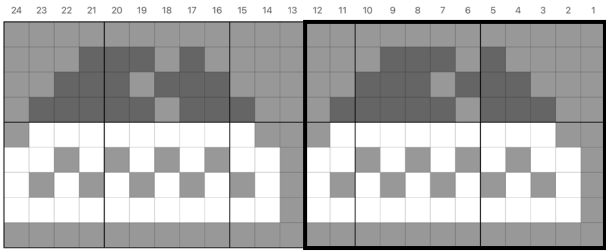
Tennis Ball (6 st)



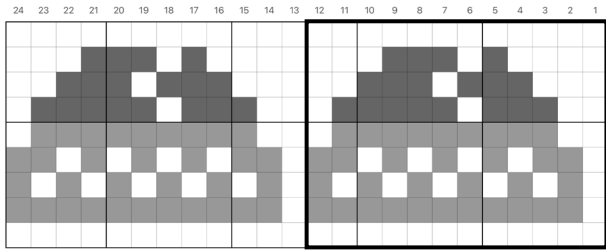
Tennis Ball (6 st)



Food Dish (12 st)



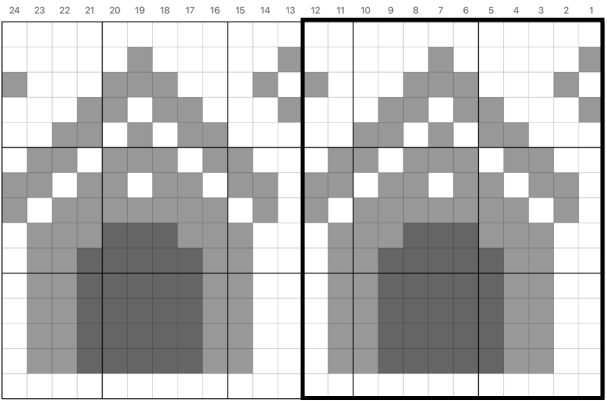
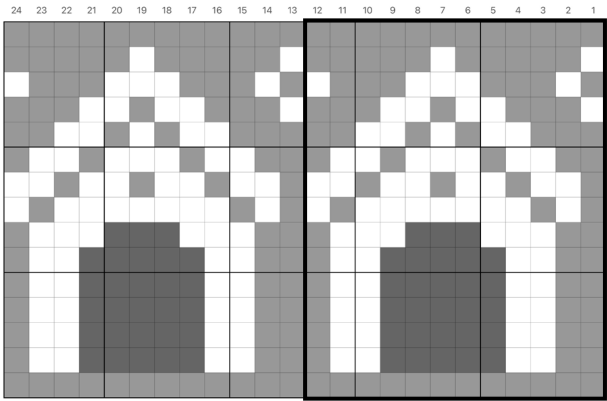
Food Dish (12 st)



DOG DOODLE CHARTS

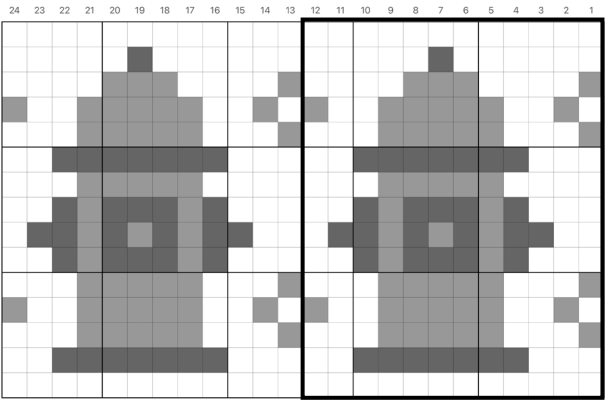
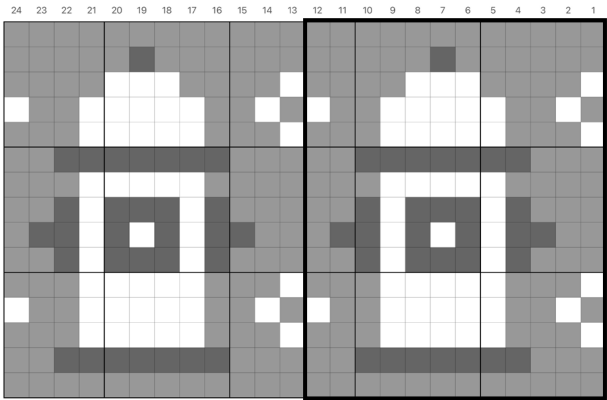
Chart Key  Knit in **darker** color  Knit in **lighter** color  Knit in **accent** color

Dog House (12 st)



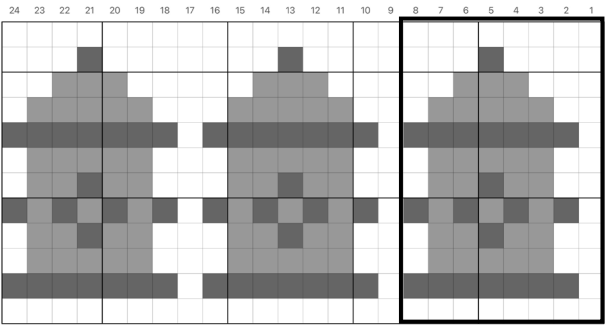
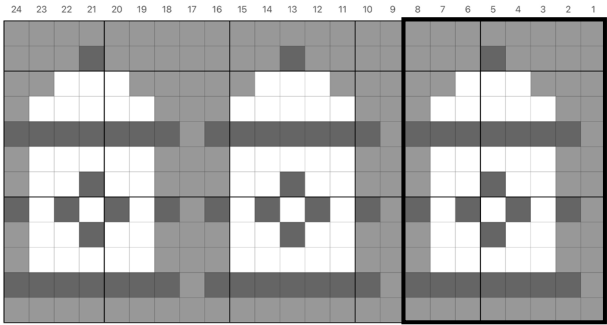
Dog House (12 st)

Fire Hydrant (large) (12 st)



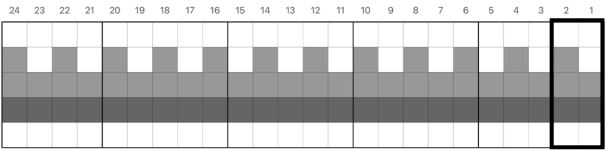
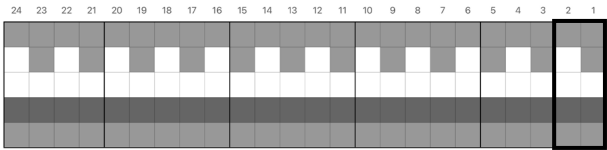
Fire Hydrant (large) (12 st)

Fire Hydrant (small) (8 st)



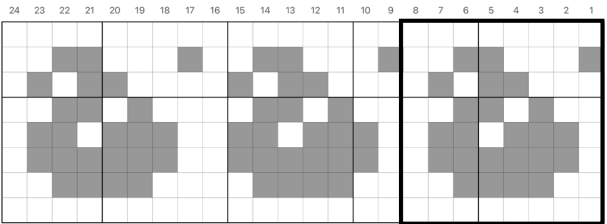
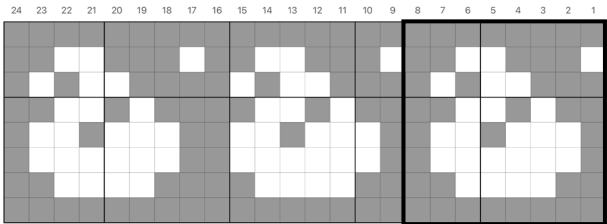
Fire Hydrant (small) (8 st)

Grass (2 st)



Grass (2 st)

Dog Poop (8 st)

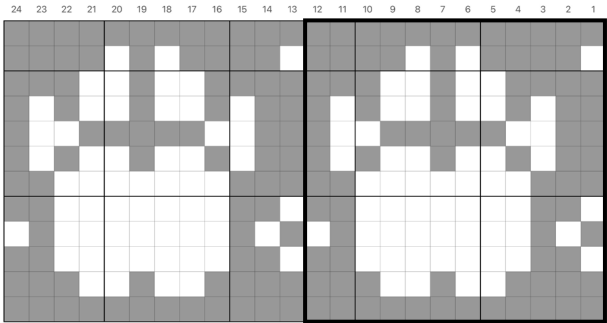


Dog Poop (8 st)

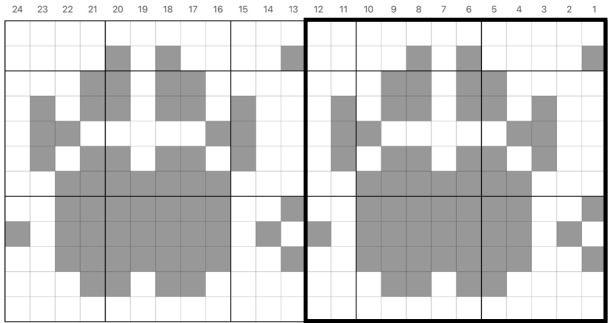
DOG DOODLE CHARTS

Chart Key  Knit in **darker** color  Knit in **lighter** color  Knit in **accent** color

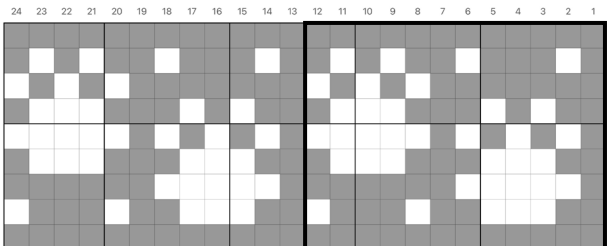
Paw Prints (large) (12 st)



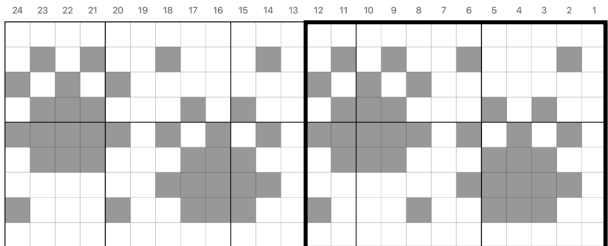
Paw Prints (large) (12 st)



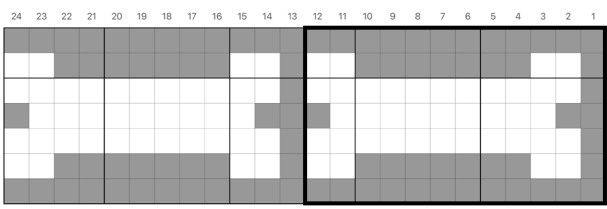
Paw Prints (small) (12 st)



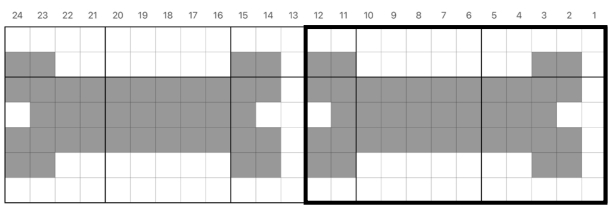
Paw Prints (small) (12 st)



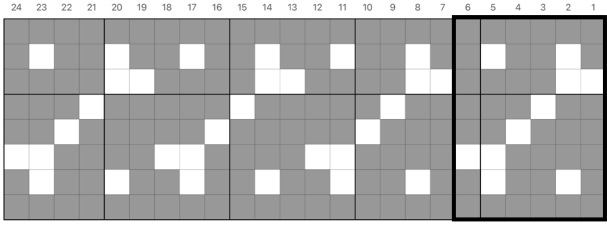
Bone (large) (12 st)



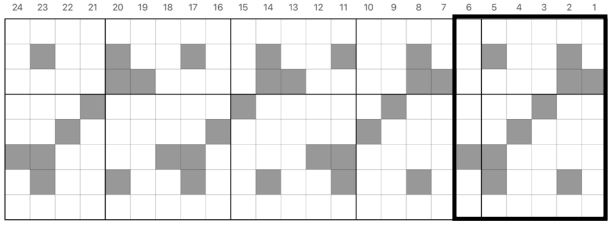
Bone (large) (12 st)



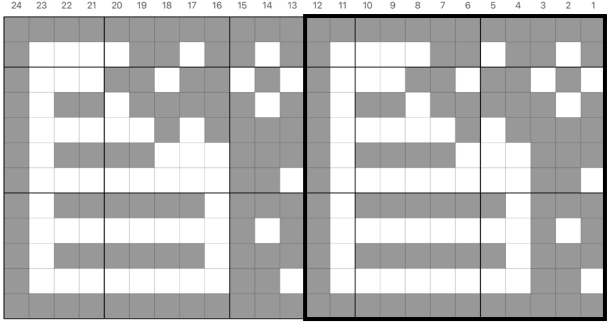
Bone (small) (6 st)



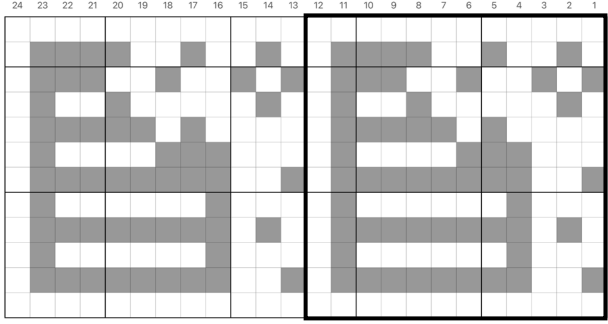
Bone (small) (6 st)



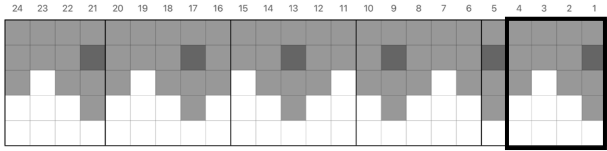
Dog Ate My Homework (12 st)



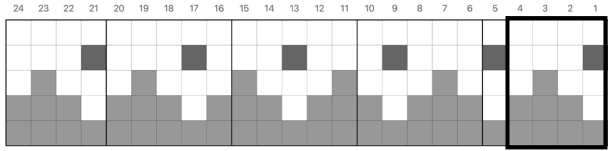
Dog Ate My Homework (12 st)



Border (4 st)



Border (4 st)



WELCOME TO DOODLES!

Through whimsical, modular colorwork patterns, **Doodles by Pacific Knit Co.** aims to empower knitters to learn new techniques and get excited about exploring their creativity and creating their own unique design.

Doodle Patterns empower creativity within a structure so you eliminate the guesswork, while building valuable skills you can use again and again.

- **Modular Base Patterns**
- **Mix-and-Match Colorwork Charts**
- **Easy Pattern Modifications**

When I first started knitting, I spent hours learning how to alter a pattern (and do the math!) to create exactly what I wanted. Now I want to encourage adventurous beginners to take on a new challenge with me!

Every Doodle pattern provides you with **opportunities for customization in colorwork and construction, built right in**, so you don't have to struggle - just choose exactly the right option for you!

Each Doodle Theme is available in 3 formats, so you can get the one that works for you:

- **Digital Pattern PDF** (full details and tutorials!)
- **Charts Only PDF** (perfect to add to anything!)
- **Doodle Card Decks** (portable and collectable cards!)

Be sure to tag me **@pacificknitco** in your posts!

Pattern Usage and Rights:

This pattern and all charts located within are the exclusive copywrite of Pacific Knit Co. and are intended for personal use only. Charts may not be used and/or resold in personal designs or patterns. Finished items made from this pattern may be sold in limited quantities with credit for the pattern provided to Pacific Knit Co. Thank you for tagging me and my pattern when sharing on social media.

Pattern Credits:

Design & Photos: Jamie Lomax, Pacific Knit Co.
Yarn Support: Maggie Fangmann, Yarnaceous Fibers
Sample Knit: Jamie Lomax



Thank you for purchasing my pattern! Please email me for pattern support, questions, or general info.



www.pacificknitco.com



[PacificKnitCo](https://www.pacificknitco.com)



[@pacificknitco](https://www.pacificknitco.com)



support@pacificknitco.com

YOU MAY ALSO ENJOY:



[Valentines Doodle](#)



[Cat Doodle](#)