



Northern Augustins No 7

By Anne-Sophie Nørby Velling



Dictionary

*Please note that this is a general dictionary,
applicable for all Augustins patterns.*

st(s) // stitch(es)
r // row
rnd(s) // round(s)
BOR // beginning of round/row

k // knit
p // purl
k tbl // knit through back loop
p tbl // purl through back loop
sl st // slip st
s1wyif // slip 1 st with yarn held in front
pssso // pass the slipped st over

k2tog // knit 2 sts together
k2tog tbl // knit 2 sts together through the back loop
p2tog // purl 2 sts together
p2tog tbl // purl 2 sts together through the back loop

dec // decrease
inc // increase
yo // yarn over
m1L // make 1 left inc, knitwise
m1R // make 1 right inc, knitwise
m1P // make 1 left inc, purlwise

M // marker
cM // chart marker
rM // raglan marker
sM // side marker
sl M // slip marker

RS // right side
WS // wrong side
CF // center front
CB // center back



About

Size: (a) b (c) d (e) f (g) h.

Your bust circumference: (80) 90 (100) 110 (120) 130 (140) 150 cm.

Total bust width of the sweater: (110) 120 (130) 140 (150) 160 (170) 180 cm.

Full length, measured CF below the neckline: (52) 54 (56) 58 (60) 62 (64) 66 cm.

Positive ease: This sweater has a positive ease at approximately 30 cm, depending on your bust circumference. When deciding which size to knit, choose the one which corresponds to your own actual bust circumference.

Gauge: 22 sts x 32 rows = 10 x 10 cm in Stockinette Stitch, at needle size 4 mm (after washing).

Needle sizes: 2 different needle sizes are used, whilst knitting the sweater:

- 2 sets of circular needles 3,5 mm (the lengths 40 and 60 cm are recommended).
- 1 set of circular needles 4 mm (the lengths 40 and 60 cm are recommended).

Yarn: The sweater is knitted with 1 thread, in each of the 2 colours:

- *Colour A (main colour):* "Sol", in colour "Ecru", Hillesvåg Ullvarefabrikk (290m per 100g).
- *Colour B (chart colour):* "Sol", in colour "Lys blå", Hillesvåg Ullvarefabrikk (290m per 100g).

Amount: The following amounts are used when knitting the sweater:

- *Colour A (main colour):* (250) 300 (350) 400 (450) 500 (550) 600g.
- *Colour B (chart colour):* (150) 150 (200) 250 (300) 350 (400) 450g.

Method: The sweater is knitted top-down in the round in Stockinette Stitch. All edges of the sweater are knitted in rib, and the neckline is double layered. When knitting the round yoke, body and sleeves, a series of charts is followed to create the multicolored pattern.

Before you begin

- Please read the entire pattern before casting on.
- Be sure to make a swatch before beginning, to ensure the right gauge.
- Knitting with dominance: for this sweater, colour B is the dominant colour. When knitting, hold colour B over your index finger, whilst holding color A over both your index- and middle finger. Thereby, colour B becomes the dominant colour, as it is closest to your knitwear.
- In this pattern, the following methods are used: Judy's magic cast on, left leaning decreases and increases, 3- needle knitting, rib, Stockinette Stitch and Italian Bind Off.

Pattern

Neckline

With *colour A* and 2 sets of circular needles 3,5 mm, cast on (224) 232 (240) 248 (256) 264 (272) 280 sts, using the method "Judy's Magic Cast On" - (112) 116 (120) 124 (128) 132 (136) 140 sts on each set.

Now, knit *k 1, p 1* for the first (112) 116 (120) 124 (128) 132 (136) 140 sts, and then place the following (112) 116 (120) 124 (128) 132 (136) 140 sts on a thread to rest - the resting sts must later be used when folding the neckline to become double layered.

Over the (112) 116 (120) 124 (128) 132 (136) 140 sts which are left on the needle, continue to knit in the rnd in the following way:

Gather work, and place a M between the first and last st = M1 and BOR.

Knit *k 1, p 1* until the neckline measures 14 cm in total.

Now, the neckline must be folded, and then knitted together using the method “3-needle knitting” to make it double layered. This is done in the following way:

Starting at BOR, place the (112) 116 (120) 124 (128) 132 (136) 140 resting sts onto a new circular needle 3,5 mm, and place the 2 needles with their WS facing each other, so that the neckline will be knitted together from the RS.

Now, *k2tog* (1 st from each of the 2 needles) throughout the rnd.

Change to circular needles 4 mm, and k 1 rnd, whilst at the same time evenly increasing (18) 24 (30) 36 (42) 48 (54) 60 sts, using the method “m1L”.

There are now a total of (130) 140 (150) 160 (170) 180 (190) 200 sts on the needle.

Yoke

Now, the multicoloured yoke must be knitted.

This is done in the following way:

Join *colour B* to the work.

Starting at BOR, knit *Chart 1*, which is 53 rows in height.

When *Chart 1* is completed, there is a total of (364) 392 (420) 448 (476) 504 (532) 560 sts on the needle.

On the next rnd, begin to knit *Chart 2*, which must be repeated in its height, until the yoke is 24 (24,5) 25 (25,5) 26 (26,5) 27 (27,5) cm, measured from below the neckline and downwards.

The yoke has now been knitted.

On the next rnd, divide the work for body and sleeves in the following way:

- Starting at BOR, place the first (78) 82 (86) 90 (94) 98 (102) 106 sts of the rnd on a thread to rest (1st sleeve).
- With *colour A*, cast on (17) 18 (20) 20 (21) 22 (23) 24 sts, and place a M after the (8.) 9. (10.) 10. (10.) 11. (11.) 12. created st = sM1.
- Now, k (104) 114 (124) 134 (144) 154 (164) 174 sts with *colour A* (front).
- Place the next (78) 82 (86) 90 (94) 98 (102) 106 sts on a thread to rest (2nd sleeve).
- With *colour A*, cast on (17) 18 (20) 20 (21) 22 (23) 24 sts, and place a M after the (8.) 9. (10.) 10. (10.) 11. (11.) 12. created st = sM2.
- Now, k the remaining (104) 114 (124) 134 (144) 154 (164) 174 sts with *colour A* (back).

Let sM1 and sM2 rest in the work, whilst knitting the body, as they later must be used when knitting the sleeves.

Body

There is now a total of (242) 264 (286) 308 (330) 352 (374) 396 sts on the needle for the body.

On the next rnd, continue to k in the rnd whilst following *Chart 3*, until the work is 45 (47) 49 (51) 53 (55) 57 (59) cm in total, measured from below the neckline and downwards (or is 7 cm from being the preferred length).

Change to circular needle 3,5 mm, and break the yarn in *colour B* - from this point onwards, the body is knitted only with *colour A*.

Now, k 1 rnd, whilst at the same time decreasing 10 sts evenly, using the method k2tog.

There is now a total of (232) 254 (276) 298 (320) 342 (364) 386 sts on the needle.

Now, the finishing rib edge of the body must be knitted following the instructions below:

Knit *k 1, p 1*, and repeat *-* until the edge measures 7 cm in total.
Break the yarn, and bind off all sts using the method Italian Bind Off.

Sleeves

Now, the 2 sleeves must be knitted.

Start by establishing the sts for the first sleeve in the following way:

- With needle size 4 mm, and starting at sM1 from the RS, pick up (10) 8 (12) 10 (8) 11 (9) 13 sts along the armhole cast on row (the new sts are to the left of sM1).
- In continuation hereof, place the (78) 82 (86) 90 (94) 98 (102) 106 resting sleeve sts onto the needle and finish, by picking up (11) 9 (12) 10 (8) 12 (10) 13 new sts from the armhole cast on row (these sts are to the right of sM1).

There are now a total of (99) 99 (110) 110 (110) 121 (121) 132 sts on the needle.
Let sM1 follow down along the sleeve, as it marks BOR.

Now, k 1 rnd with *colour A*.

On the next rnd, join *colour B* to the work, and continue to k in the rnd whilst following *Chart 3*, until the work is 38 (38) 39 (39) 40 (40) 41 (41) cm in total, measured from the armhole cast on row and downwards (or is 7 cm from being the preferred length).

Change to circular needle 3,5 mm, and break the yarn in *colour B* - from this point onwards, the sleeve is knitted only with *colour A*.

Now, k 1 rnd, whilst at the same time decreasing the stitch count to (72) 78 (82) 88 (92) 98 (102) 108 sts, using the method k2tog.

The finishing rib edge of the sleeve must now be knitted following the instructions below:

Knit *k 1, p 1*, and repeat *-* until the edge measures 7 cm in total.
Break the yarn, and bind off all sts using the method Italian Bind Off.

Knit the 2nd sleeve in the same way as the 1st.

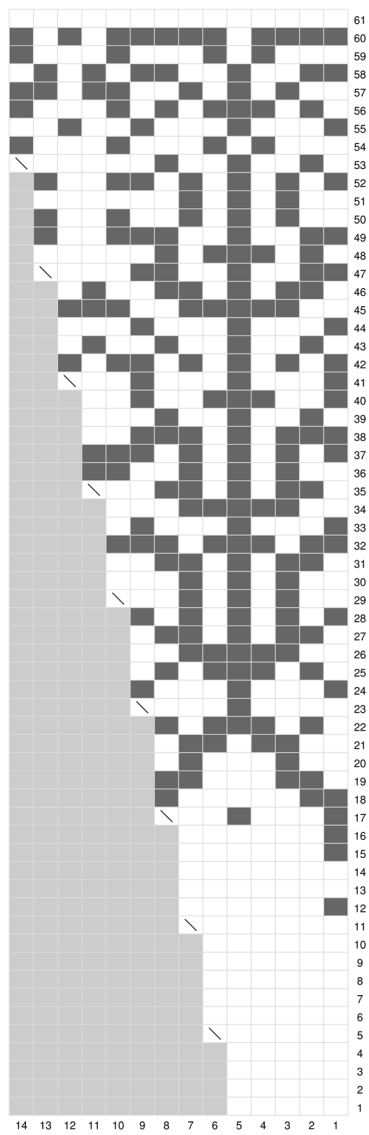
Finishing

- Weave in all ends.
- Steam or rinse the sweater, lay it into shape, and let it dry laying flat.



Charts

Chart 1



- Farve A / Colour A / Farge A: Strikkes r / k this st.
- Farve B / Colour B / Farge B: Strikkes r / k this st.
- 1 ve-udt (bundfarve) / m1L (main colour) / ve-økn (bunnfarge).
- Ingen m / Non existent st.

Chart 2

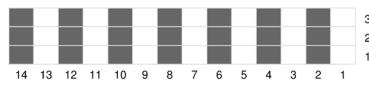
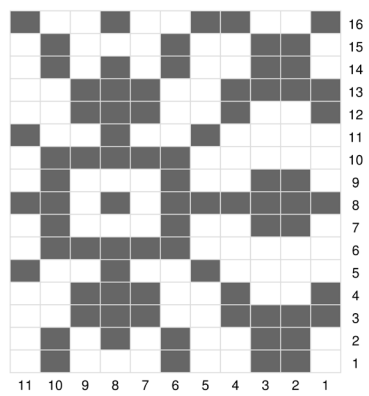


Chart 3



Notes

.....

.....

.....

.....

.....

.....

.....

.....

.....

.....

.....

.....

.....

.....

.....

*This pattern is designed
by Augustins, Anne-Sophie Nørby Velling*

The pattern is for private use only. Do not reproduce, resell or
share the pattern in any way. Please notice that you are not
allowed to sell any items knitted from the pattern either.

© Copyright Augustins, 2025
www.augustins.dk // [@augustins.dk](https://www.instagram.com/augustins.dk) // [#northernaugustinsno7](https://www.facebook.com/northernaugustinsno7)

