

A *eweknit* PATTERN

MERIDIAN TOP

by Claudia Q



DESCRIPTION

A versatile summer top down sweater with a lacey eyelet yoke. Various sleeve and body lengths are given to suit your unique style.

EXPERIENCE LEVEL

Intermediate

TECHNIQUE USED

Long-tail cast on
Knitting and purling in the round
Increasing and decreasing
Backward Loop cast on
Working with DPNs (optional)
Working wrap and turn short-rows
Binding off

GAUGE

22 sts & 30 rnds = 4" / 10 cm in Stockinette / Stocking stitch in the round on a 4.00 mm (US 6) needle, blocked.

SIZES

XS (S, M, L, XL, 2X, 3X, 4X) Shown in size S.
See finished measurements below.

MATERIALS

Yarn

Shibui ECHO (DK weight; 52% Silk, 48% Merino Wool; 160 yards / 145 meters per 40g)

Short Version w/ Cap Sleeves

4 (5, 5, 6, 7, 8, 8, 9) skeins

Short Version w/ Long Sleeves

5 (5, 6, 6, 7, 8, 9, 9) skeins

Tunic Version w/ Cap Sleeves

5 (6, 6, 7, 8, 9, 9, 10) skeins

Tunic Version w/ Long Sleeves

5 (6, 7, 7, 8, 9, 10, 10) skeins

Needles

4 mm (US 6) circular needle, 32" / 80 cm (or longer for larger sizes), a 24" / 60 cm, and a set of Double Pointed Needles (DPNs) or needle in your preferred style for working small circumferences in the round.

Notions

2 stitch markers, waste yarn or stitch holders, tapestry needle

FINISHED MEASUREMENTS

Bust Circumference: 37 (41 1/2, 45, 49, 53, 58, 61, 66)" / 94 (105.5, 114, 124.5, 134.5, 147, 155, 167.5) cm

Body Length to Underarm:

Short Version: 12 1/2 (13, 13, 13, 13 1/2, 13 1/2, 13 1/2, 14)" / 32 (33, 33, 33, 34, 34, 34, 35.5) cm

Tunic Version: 20 1/2 (21, 21, 21, 21 1/2, 21 1/2, 21 1/2, 22)" / 52 (53, 53, 53, 55, 55, 55, 56) cm

Sleeve length to Underarm:

Cap Sleeve Version: 1 3/4 (1 3/4, 1 3/4, 2 1/4, 2 1/4, 2 1/4, 2 3/4, 2 3/4)" / 4.5 (4.5, 4.5, 6, 6, 6, 7, 7) cm

Long Sleeve Version: 11 1/2 (11 1/2, 12 1/2, 12 1/2, 12 1/2, 13 1/2, 13 1/2, 13 1/2)" / 29 (29, 32, 32, 32, 34, 34, 34) cm

Upper Arm: 11 1/2 (12 1/2, 13 1/2, 14, 15 1/2, 18, 19, 19 1/2)" / 29 (32, 34, 35.5, 39, 46, 48, 49.5) cm

Yoke Depth: 6 1/4 (7 1/4, 8 1/4, 8 1/4, 9 1/4, 10 1/4, 10 1/4, 11 1/4)" / 16 (18.5, 21, 21, 23.5, 26, 26, 28.5) cm

PATTERN NOTES

This is a cropped or tunic length, loose-fitting, yoke-necked pullover worked from the top down. A section of wrap and turn short rows are worked at the back neck and lower edge to help with fit. Neck edge and sleeve instructions are written to use DPNs, however an alternate method of working small circumferences can be used, such as Magic-Loop, or a short circular needle for the larger sizes.

STITCH GUIDE

Ssk (Slip, slip, knit- single decrease)

Slip two stitches knit-wise one at a time from left needle to right needle. Insert point of left needle into front of two slipped stitches and knit them together with right needle (1 stitch decreased)

w&t (wrap & turn)

Slip next st to the right needle, take yarn to opposite side of work between needles, slip same st back onto left needle. Turn work, ready to begin working in opposite direction.

Conceal Wrap on the knit side:

Slip the RH needle under the wrap and knit it together with the st that it wraps.

Conceal Wrap on the purl side:

With the RH needle, pick up the wrap from underneath on the opposite side, and lift it up on to the LH needle, then purl it together with the st that it wraps.

ABBREVIATIONS

approx Approximately

BOR beginning of round

Dec(d) decrease(d)

DPNs double pointed needles

Inc(d) increase(d)

k(K) knit

k2tog knit 2 stitches together (decrease)

patt pattern

p(P) purl

p2tog purl 2 stitches together (decrease)

PM place marker

purl-wise insert needle into stitch as if to purl

rem remaining

rep repeat

rep from ** repeat instructions from the **

rnd(s) round(s)

RS Right side of fabric

SM slip marker

ssk (see Stitch Guide)

st(s) stitch(es)

tog together

w&t (see Stitch Guide)

WS Wrong side of fabric

yo(Yo) yarn over

[] Repeat instructions in brackets as directed

PATTERN BEGINS

SHORT VERSION

**** Neck Edge (change to shorter circular needle when necessary)**

Using 4 mm DPNs, cast on 108 (108, 108, 114, 114, 120, 126, 126) sts using the long-tail cast on method, or your preferred method of cast on. Join in the rnd making sure that sts are not twisted around needle. PM for BOR.

Rnd 1: Purl.

Beg Back Neck Shaping

Short-row 1 (RS): Knit to 1 st before BOR marker, w&t.

Short-row 2 (WS): P32 (32, 32, 36, 36, 38, 40, 40), w&t.

Short-row 3 (RS): Knit to 5 sts before the previously wrapped st, w&t.

Short-row 4 (WS): Purl to 5 sts before the previously wrapped st, w&t.

Next Row (RS): Knit to BOR marker, concealing wrapped sts as you come to them (see Stitch Guide).

Next Rnd: Knit, concealing remaining wraps as you come to them. – 108 (108, 108, 114, 114, 120, 126, 126) sts.

Next Rnd: Knit.

Next Rnd: [Yo, k2tog] to end.
Knit 3 rnds.

Inc Rnd: [Inc 1 st in next st purl-wise, p2] to end. – 144 (144, 144, 152, 152, 160, 168, 168) sts.

Rnds 2 to 4: Knit.

Rnd 5: [Yo, k2tog] to end.

Rnd 6 to 8: Knit.

These 8 rnds establish Eyelet Patt.

Inc Rnd: [Inc 1 st in next st purl-wise, p3] to end. – 180 (180, 180, 190, 190, 200, 210, 210) sts.
Rep rnds 2 to 8 of Eyelet Patt.

Inc Rnd: [Inc 1 st in next st purl-wise, p4] to

end. – 216 (216, 216, 228, 228, 240, 252, 252) sts.

Rep rnds 2 to 8 of Eyelet Patt.

Continue working in patt as established, that is working one more purl st in between each increase st on the inc rnd until the following inc rnd has been worked:

[Inc 1 st in next st purl-wise, p7 (8, 9, 9, 10, 11, 11, 12)] to end. – 324 (360, 396, 418, 456, 520, 546, 588) sts.

Divide for Body

Next Rnd: Remove BOR marker, place next 62 (68, 74, 76, 84, 100, 104, 110) sts for right sleeve onto waste yarn or holder, using backward loop method, cast on 2 (2, 1, 2, 2, 1, 1, 1) sts, PM for new BOR, using backward loop method, cast on 2 (2, 1, 2, 2, 1, 1, 1) sts, k100 (112, 124, 133, 144, 160, 169, 184), slip next 62 (68, 74, 76, 84, 100, 104, 110) sts for left sleeve onto waste yarn or holder, using backward loop method, cast on 2 (2, 1, 2, 2, 1, 1, 1) sts, PM, using backward loop method, cast on 2 (2, 1, 2, 2, 1, 1, 1) sts, knit to end of rnd.
– 208 (232, 252, 274, 296, 324, 342, 372) sts.

Next Rnd: P1, k103 (115, 125, 136, 147, 161, 170, 185), SM, p1, knit to end. **

Rep last rnd until work measures 11 (11 1/2, 11 1/2, 11 1/2, 12, 12, 12, 12 1/2)" / 28 (29, 29, 29, 30.5, 30.5, 30.5, 32) cm or desired length from underarm to start of lower edge.

Work Short-Rows

Short-Row 1 (RS): Work in pattern to 2 sts before next marker, w&t.

Short-Row 2 (WS): Purl to 2 sts before BOR

marker, w&t.

Short-Row 3: Knit to 1 st from wrapped st, w&t.

Short-Row 4: Purl to 1 st from wrapped st, w&t.

Rep short-rows 3 and 4 twice more.

Next Rnd (RS): Knit to marker, concealing wraps as you pass them, SM, p1, knit to 1 st before BOR marker, w&t.

Next Short-Row (WS): Purl to 2 sts before next marker, w&t.

Next Short-Row: Knit to 1 st from wrapped st, w&t.

Next Short-Row: Purl to 1 st from wrapped st, w&t.
Rep last 2 short-rows twice more.

Next Rnd (RS): Knit to marker, concealing wraps as you pass them, SM, p1, knit to end of rnd concealing wraps as you pass them. - 208 (232, 252, 274, 296, 324, 342, 372) sts.

Bottom Hem

Purl 1 rnd.

Bind off evenly purl-wise.

Sleeves

Place 62 (68, 74, 76, 84, 100, 104, 110) sts on waste yarn for sleeve onto DPNs (or needle in preferred style for working small circumferences) and beginning at centre of underarm, join yarn and pick up and knit 1 (1, 1, 2, 1, 1, 1, 1) along underarm cast on sts, k62 (68, 74, 84, 100, 104, 110) sts from sleeve, and then pick up and knit 1 (1, 1, 2, 1, 1, 1, 1) along underarm cast on to centre, PM to mark BOR. - 64 (70, 76, 80, 86, 102, 106, 112) sts in rnd.

Cap Sleeve Version

Knit even in rnds until work measures 1 1/2 (1 1/2, 1 1/2, 2, 2, 2, 2 1/2, 2 1/2)" / 4 (4, 4, 5, 5, 5, 6, 6) cm from underarm.

Purl 1 rnd, dec 10 (14, 14, 18, 20, 24, 24, 24) sts evenly around. - 54 (56, 62, 66, 68, 78, 82, 88) sts

Bind off evenly purl-wise.

Rep for second sleeve.

Long Sleeve Version

Knit 11 (11, 11, 11, 8, 11, 4, 2) rnds even.

Dec Rnd: K1, ssk, knit to 3 sts from end, k2tog, k1. - 2 sts dec'd.

Rep dec rnd every 14th (9th, 7th, 7th, 6th, 4th, 4th, 4th) rnd 5 (8, 11, 11, 14, 21, 23, 25) more times.
- 52 (52, 52, 56, 56, 58, 58, 60) sts.

Work even until sleeve measures 11 3/4 (12 1/4, 12 1/4, 12 3/4, 12 3/4, 13 1/4, 13 1/4, 13 3/4)" / 29 (31, 31, 32, 32, 33.5, 33.5, 35) cm from underarm, or 1 1/4" / 3 cm less than desired length to start of sleeve cuff.

Sleeve Cuff

Change to 4 mm DPNs.

Rnd 1: [K1, p1] to end.

Rep rnd 1 seven times more. Bind off in pattern.

Rep for second sleeve.

All Versions

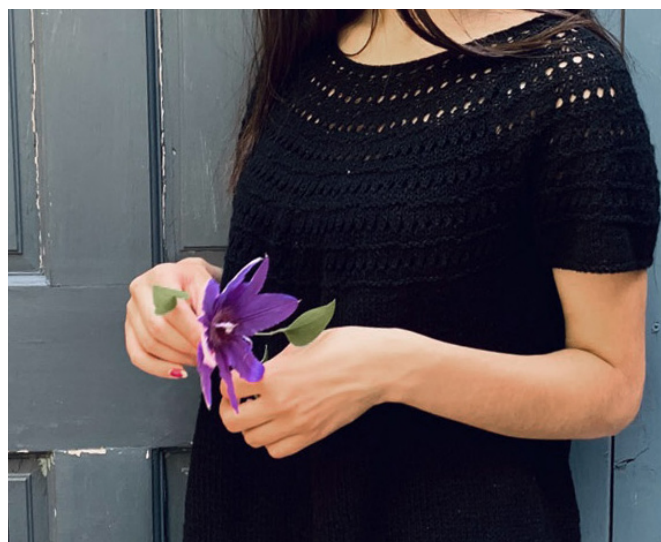
Weave in ends and block to measurements.

TUNIC VERSION

Work as for Short Version from ** to **.

Rep last rnd until work measures 19 (19 1/2, 19 1/2, 19 1/2, 20, 20, 20, 20 1/2)" / 48 (50, 50, 50, 51, 51, 51, 52) cm or desired length from underarm to start of lower edge.

Complete Short-Rows, Bottom Hem, and desired Sleeves for Short Version.



©2020 Eweknit, version 2, June 2020

Questions?

Email: info@eweknit.ca

www.eweknit.ca

Instagram: eweknitto

Share finished projects by hashtagging #eweknitprojects