

THE HOLMES WRAP



by
Michele
Wang

HOLMES INFORMATION

YARN

Approximately 975 yards of worsted weight yarn.

Sample knit with 8 skeins of **mYak Medium Weight** (100% Baby Yak, 50g, 125 yards) in color **Mustard**.

FINISHED DIMENSIONS

Approximately 14.5" x 78"

GAUGE

22 stitches // 27 rows = 4" in Holmes Cable Pattern, after blocking.

NEEDLE

GAUGE NEEDLE

One pair of 24" or 32" circular needles in size needed to obtain gauge.

Suggested size: US 8 // 5.0mm

SMALLER NEEDLE

One pair of 24" or 32" circular needles two sizes smaller than Gauge Needle.

Suggested size: US 6 // 4.0mm

NOTIONS // TOOLS

- Cable Needle
- Tapestry Needle
- Miscellaneous blocking tools. (Blocking wires are recommended.)

ABBREVIATIONS

CO: Cast on

Cont: Continue

CN: Cable needle

Rep: Repeat

RS: Right side

St(s): Stitch(es)

WS: Wrong side

PATTERN AND CHART NOTES

- There are 3 charts: Right, Center, Left. When combined they make up the entirety of the wrap. Because the charts would be too small and illegible if depicted as one, they are broken out into three parts.
- Work across all charts from Right to Center to Left on RS rows, and from Left to Center to Right on WS rows.

HOLMES PATTERN

With 24" or 32" circular Smaller Needle, CO 78 sts using your preferred method.

Setup Row (WS): Begin Holmes Cable Chart (Left) over first 26 sts, then begin Holmes Cable Chart (Center) over next 26 sts, then begin Holmes Cable Chart (Right) over last 26 sts.

Row 1 (RS): Cont Holmes Cable Chart (Right) over first 26 sts, then cont Holmes Cable Chart (Center) over next 26 sts, then cont Holmes Cable Chart (Left) over last 26 sts.

Cont in established pattern for 7 rows ending on a WS row.
Change to Gauge Needle.

Continue working the 32 rows of Holmes Cable Chart Right, then the 24 rows of Holmes Cable Chart Center, then the 32 rows of Holmes Cable Chart Left for 512 rows.

Rep the 32 rows of the Holmes Cable Charts Right and Left 16 times, and the Holmes Cable Chart Center 21 times plus the first 8 rows, as indicated on the Chart.

Once you've completed the 519 rows, (first 7 rows + 512 rows) *change to Smaller Needle.*

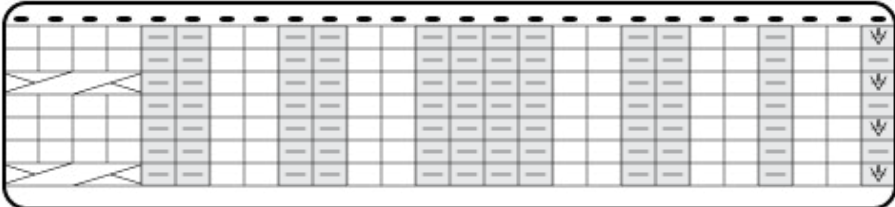
Complete the final 7 rows of the charts and BO all sts in pattern. When BO over cabled fabric, decrease one st approximately every four or five sts to prevent flaring.

Weave in all ends and wet-block wrap until it is completely dry. (Blocking wires are recommended for crisp edges.) Trim all ends.

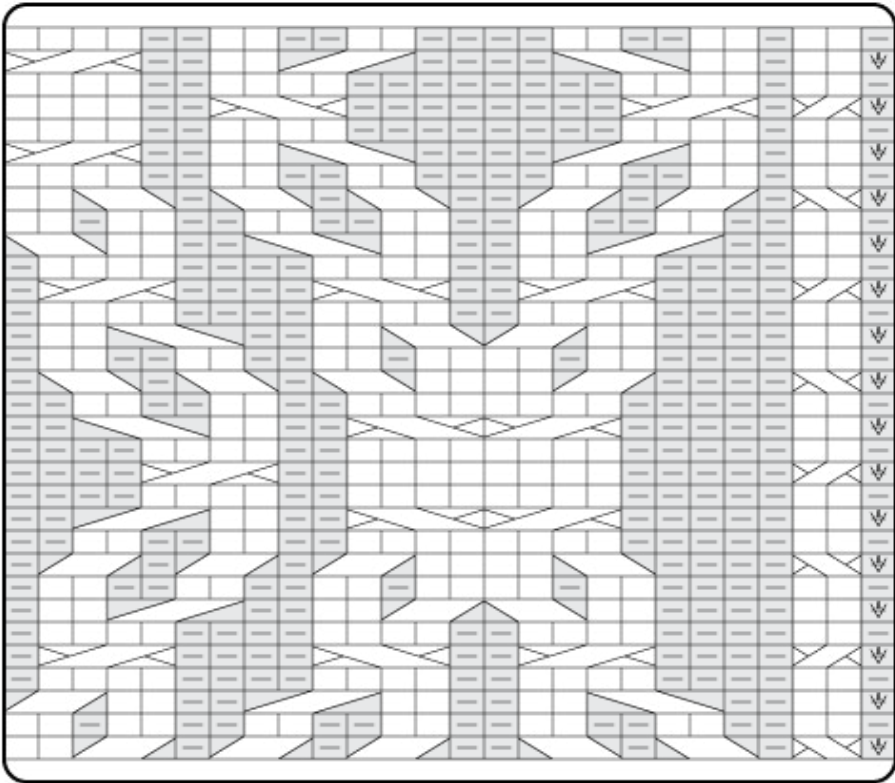
HOLMES LEGEND

	Knit Knit stitch on RS; purl stitch on WS		1/1 LC: Slip 1 stitch to CN and hold in front. Knit 1 stitch from L needle. Knit stitch from CN
	Purl Purl stitch on RS; knit stitch on WS		1/1 RC: Slip 1 stitch to CN and hold in back. Knit 1 stitch from L needle. Knit stitch from CN
	Twisted Purl Slip (wyif): On RS, with yarn in front slip 1 stitch as if to purl through the back loop.		2/2 LT (Left Twist) Slip 2 stitches to CN and hold in front, purl 2 stitches from L needle, knit 2 stitches from CN
	Twisted Knit Slip (wyib): On WS, with yarn in back slip 1 stitch as if to knit		2/2 RT (Right Twist) Slip 2 stitches to CN and hold in back, knit 2 stitches from L needle, purl 2 stitches from CN
	2/2 LC (Left Cross) Slip 2 stitches to CN and hold in front, knit 2 stitches from L needle, knit 2 stitches from CN		Bind Off: Within one row, bind off all stitches indicated with this symbol
	2/2 RC (Right Cross) Slip 2 stitches to CN and hold in back, knit 2 stitches from L needle, knit 2 stitches from CN		
	2/1 LT (Left Twist) Slip 2 stitches to CN and hold in front, purl 1 stitch from L needle, knit 2 stitches from CN		
	2/1 RT (Right Twist) Slip 1 stitch to CN and hold in back, knit 2 stitches from L needle, purl stitch from CN		

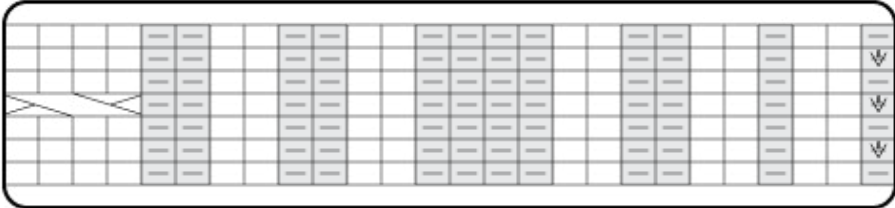
HOLMES CABLE CHART (RIGHT)



These 7 rows worked once with Smaller Needle.



32-row Repeat
Repeat 16 times for 512 rows.
Work with Gauge Needle.



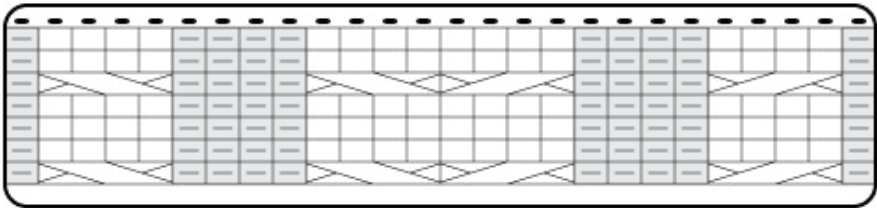
These 7 rows worked once with Smaller Needle.

→ Setup Row

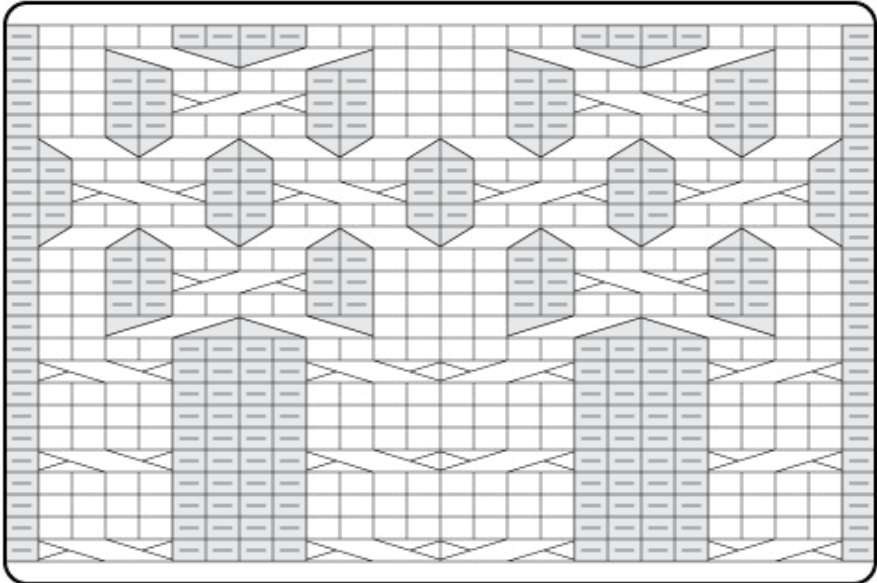
1 ←

HOLMES CABLE CHART (RIGHT)

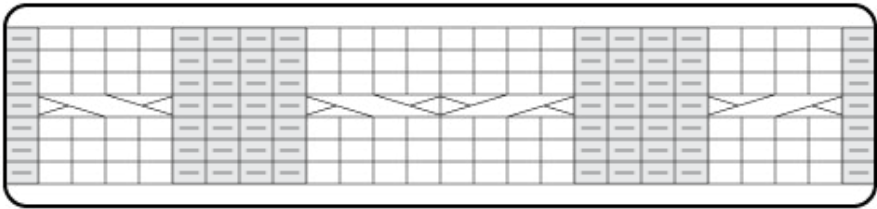
HOLMES CABLE CHART (CENTER)



These 7 rows worked once with Smaller Needle.



24-row Repeat
Repeat 21 times, plus the first 8 rows for a total of 512 rows.
Work with Gauge Needle.



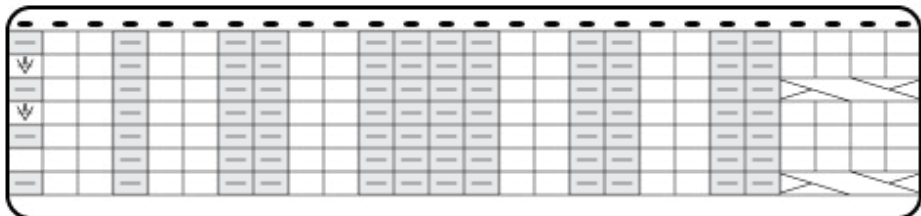
These 7 rows worked once with Smaller Needle.

→ Setup Row

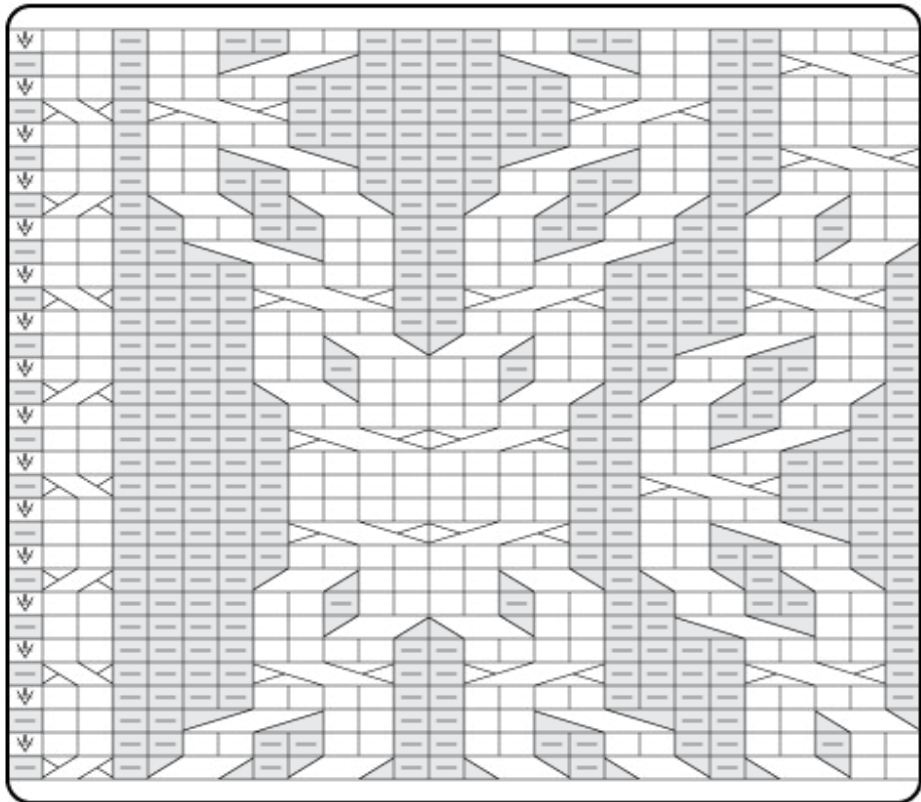
1 ←

HOLMES CABLE CHART (CENTER)

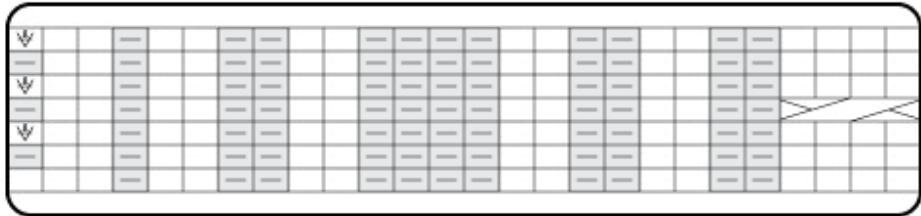
HOLMES CABLE CHART (LEFT)



These 7 rows worked once with Smaller Needle.



32-row Repeat
Repeat 16 times for 512 rows.
Work with Gauge Needle.



These 7 rows worked once with Smaller Needle.

→ Setup Row

1 ←

HOLMES CABLE CHART (LEFT)

