

Greywind



by Meghan Babin

Winter has come.

This tribute cardigan is a test of knitting valor featuring flat stranded colorwork and intarsia for a true king or queen of the North.

The cardigan is worked seamlessly from the bottom up with raglan shaping. The button band and shawl collar are worked from held ribbing stitches and attached as you work. The shawl collar is completed with short rows, which are hidden in the ribbing. An optional tubular cast on provides a polished, elegant finish for this royal cardigan.

SIZE

S[M, L, XL, 1X, 2X, 3X, 4X, 5X]

FINISHED MEASUREMENTS


Chest (buttoned): 38[42, 46, 50, 54, 58, 62, 66, 70] inches / 96.5 [106.5, 117, 127, 137, 147.5, 157.5, 167.5, 178] cm

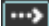
Length (to center back neck): 27.25[28, 28.25, 29.25, 29, 29.5, 29.75, 30.75, 31.5] inches / 69[71, 72, 74.5, 73.5, 75, 75.5, 78, 80] cm

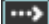
MATERIALS

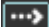
Yarn

Hudson + West Co. Forge [70% U.S. Merino, 30% US Corriedale wool; 235 yds/215 m per 100g skein]:

 [MC] Ash; 4[4, 4, 5, 5, 6, 7, 8, 8] skeins

 [CC1] Charcoal; 1[1, 2, 2, 2, 2, 3, 3, 3] skeins

 [CC2] Fawn; 2[2, 2, 3, 3, 3, 4, 4, 4] skeins


 [CC3] Raven; 1[1, 1, 1, 1, 1, 1, 1, 1] skeins

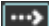
Note: A kit is available at Meghan's shop, Hudson + West. (<https://hudsonandwestco.com/products/greywind>)

Recommended needle size


[always use a needle size that gives you the gauge listed below - every knitter's gauge is unique]


 1 US #7/4.5 mm circular needle, 32-48 inches/80-120 cm long

 1 US #5/3.75 mm circular needle, 32 inches/80 cm long

 1 US #4/3.5 mm circular needle, 32 inches/80 cm long

 1 US #7/4.5 mm circular needle, 16 inches/40 cm long

 1 set US #7/4.5 mm DPNs

 1 set US #5/3.75 mm DPNs

 1 set US #4/3.5 mm DPNs

Notions

 US G-6 (4 mm) crochet hook


 Waste yarn

 Stitch markers

 Intarsia bobbins

 Tapestry needle

 Eight 1.5-inch/38-mm buttons

 Thread and a sharp sewing needle

GAUGE

20 sts/28 rows = 4 inches/10 cm in stockinette stitch on largest needle.

Note: gauge is always taken after blocking.

PATTERN NOTES

[Knitty's list of standard abbreviations and techniques can be found here

(<https://www.knitty.com/ksbbb.php#ksbbb>) .]

Body is worked flat to accommodate the intarsia motifs.

When **changing colors**, be sure to twist the new strand around the old strand to prevent gaps in the fabric.

Stranded charts at the hem and yoke are worked flat.

Sleeves are worked in the round and attached to the body at the underarm join.

Yoke is shaped seamlessly with raglan shaping..

Maintain **garter selvedge** at body edge.

Maintain **slip st selvedge** at buttonband edge.

Buttonbands are worked from held sts at ribbing and attached as worked on a smaller needle.

Prepare 7 bobbins in advance for intarsia: 4 in MC and 3 in CC3.

The **buttons** shown on this cardigan are deer antler from Favor Valley Woodworking.

The **Tubular cast-on** is optional. If a different cast-on is preferred, cast on the number of sts shown in the pattern instructions.

Crochet chain provisional cast on: Using crochet hook and waste yarn, make a slipknot and place on crochet hook. Holding the smallest needle in left hand, chain over the needle the amount of sts indicated in the patt. Break yarn and leave a tail for unraveling later.

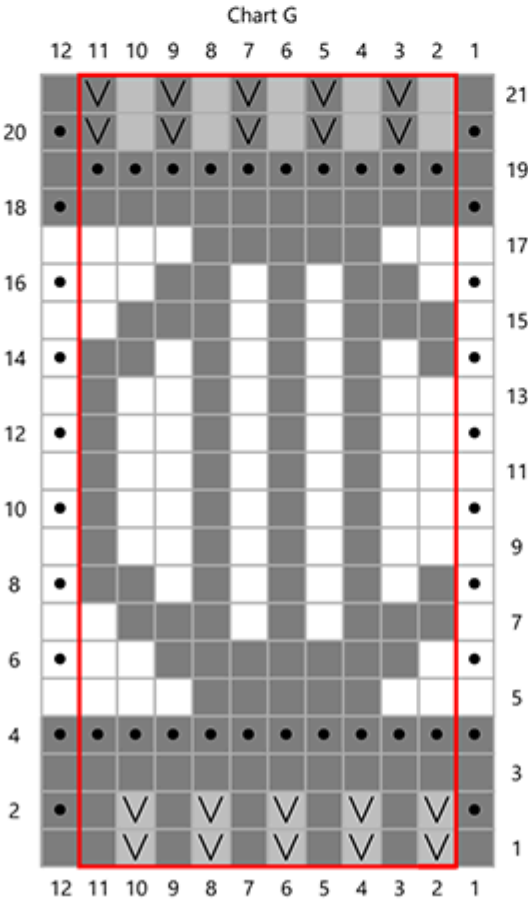
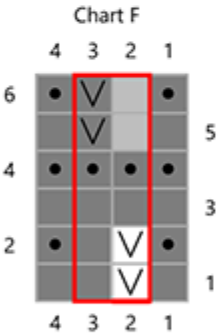
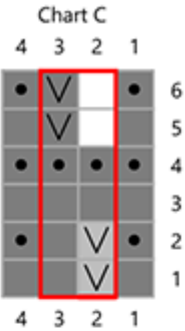
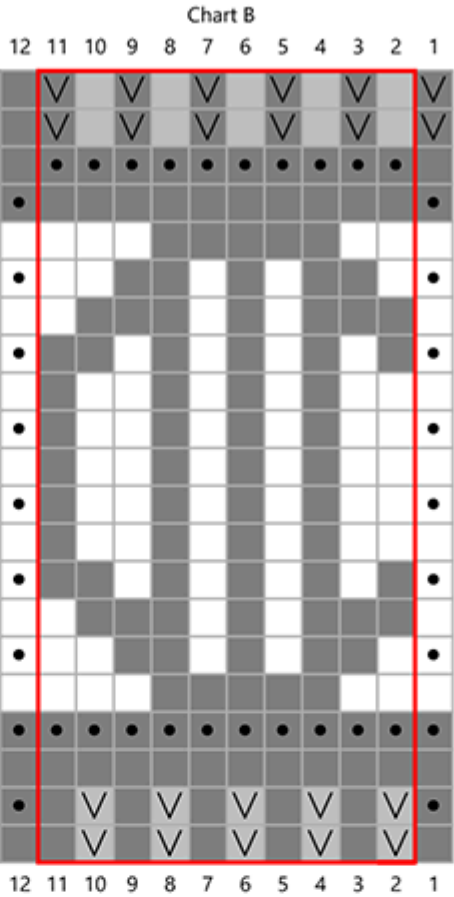
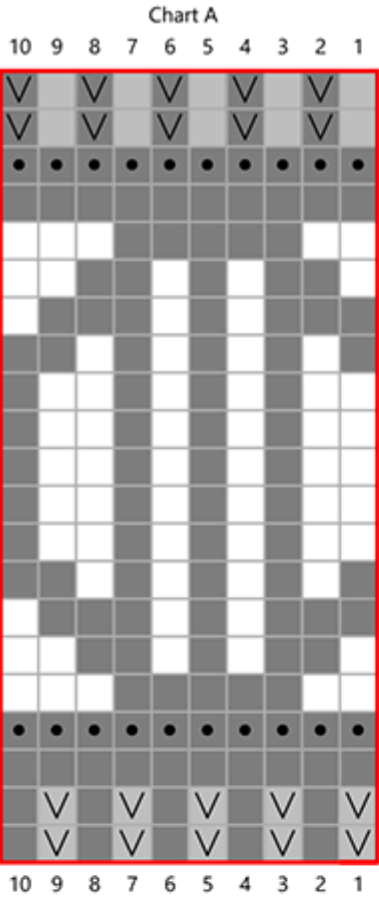
PKP (1-to-3 inc): (P1, k1, p1) into 1 st. 2 sts inc'd.

One Row Buttonhole (worked over 5 sts):

Sl 1 wyif, bring yarn to back, (sl 1, pass slipped st over) 4 times; sl last st worked to left hand needle, turn.

Using the cable cast on, CO 6 sts, turn; yb, sl 1 wyib, pass last cast on st over sl st.

CHARTS

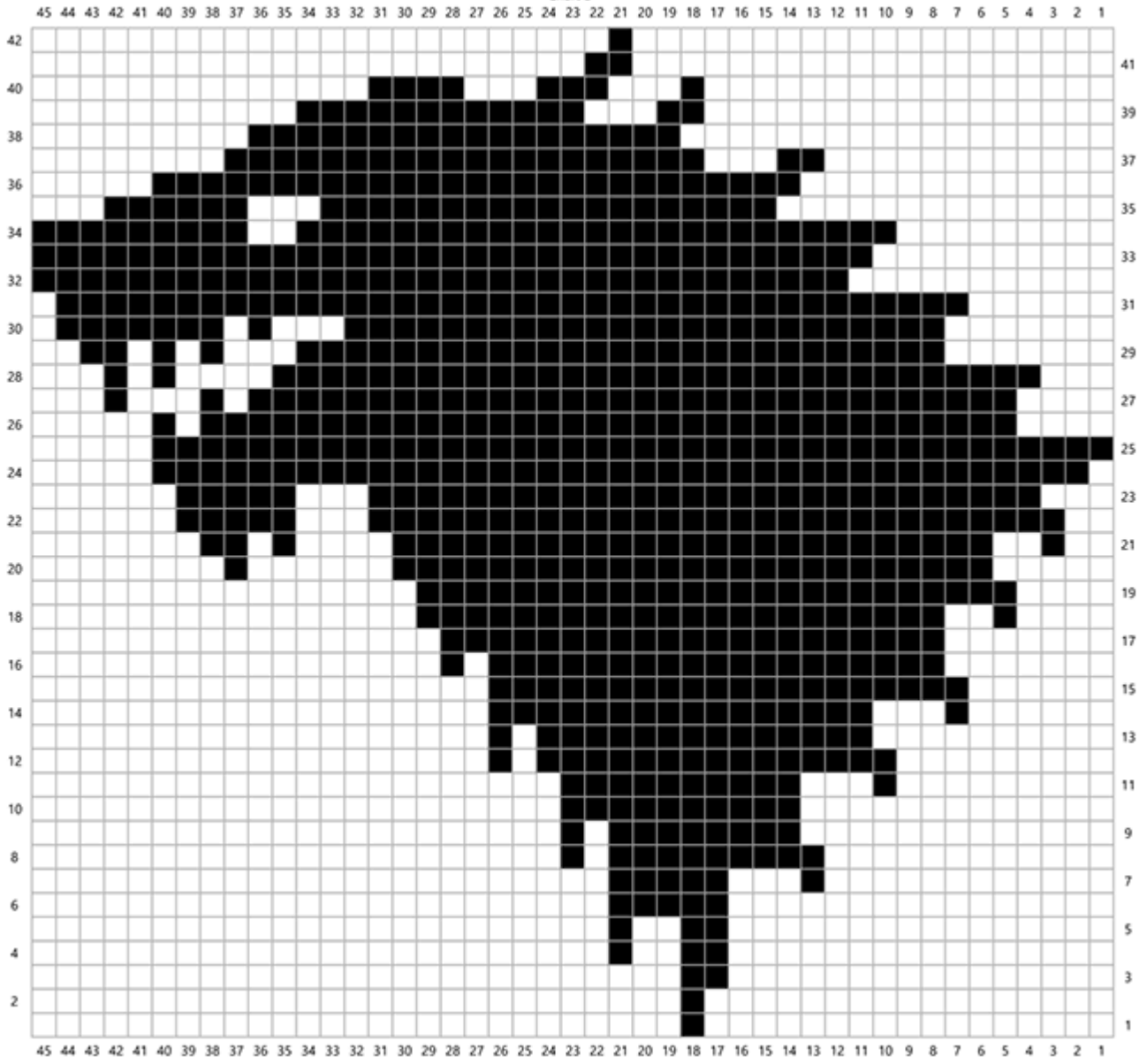


- Key
- MC
 - CC1
 - CC2
 - CC3
 - Knit on RS, Purl on WS
 - P on RS, K on WS
 - Sl 1 wyib on RS, sl 1 wyif on WS
 - Pattern Repeat

45 44 43 42 41 40 39 38 37 36 35 34 33 32 31 30 29 28 27 26 25 24 23 22 21 20 19 18 17 16 15 14 13 12 11 10 9 8 7 6 5 4 3 2 1



Chart E





Sleeves (make 2)

Cast on following the instructions for the Tubular Cast-on method below, or, using MC and middle-sized DPNs, cast on 46[48, 48, 50, 50, 50, 50, 50, 56] sts using long-tail or similar method, join to work in the round, pm for beg of rnd, and continue to Ribbing.

Tubular cast-on

Using waste yarn, smallest DPNs, and the crochet provisional cast on, CO 24[25, 25, 26, 26, 26, 26, 26, 29] sts onto one needle. Divide sts evenly over DPNs.

Row 1 [RS]: Using MC, (k1, yo) to last st, k1. 47[49, 49, 51, 51, 51, 51, 51, 57] sts.

Round 2: Sl st of last rnd to left hand needle and k2tog, sl st just worked back to left hand needle, pm for beg of rnd, sl st back to right hand needle. (P1, sl 1 wyib) to last st of rnd, p1. 1 st dec'd. 46[48, 48, 50, 50, 50, 50, 50, 56] sts.

Round 3: Sl 1 wyib, (sl 1 wyif, k1) to last st, sl 1 wyif.

Round 4: (Sl 1 wyib, p1) to end.

Round 5: (K1, sl 1 wyif) to end.

Change to middle-sized DPNs.

Ribbing

Round 1: (K1, p1) to end.

Rep *Round 1* until work measures 3 inches / 7.5 cm from cast-on.

Change to largest DPNs. Remove waste yarn from cast-on if necessary.

Knit 1 rnd.

Sizes S, M, L and 5X only

Inc round: K1, m1L, knit to last st, m1R, k1. 2 sts increased. 48[50, 50, -, -, -, -, 58] sts.

Next round: Knit.

Rep last 2 rounds 1[0, 0, -, -, -, -, 1] time more. 50[50, 50, -, -, -, -, 60] sts.

All Sizes

Break MC.

Attach CC1 and work Rounds 1-21 of Chart A, attaching and breaking CCs as necessary.

Break CC1 and cont with MC only.

Knit 1 round.

Sizes 2X, 3X, 4X, and 5X only

Next round: K1, m1L, k to end of rnd. 1 st inc'd. -[-, -, -, -, 51, 51, 51, 61] sts.

All Sizes

Inc round: K1, m1L, knit to last st, m1R, k1. 2 sts increased.

Knit 4[3, 3, 2, 2, 1, 1, 1, 1] rounds.

Rep last 5[4, 4, 3, 3, 2, 2, 2, 2] rounds 14[17, 19, 22, 24, 29, 31, 34, 31] times more. 80[86, 90, 96, 100, 111, 115, 121, 125] sts.

Work even if necessary in St st until sleeve measures 18 inches / 45.5 cm.

Next round: BO 5[5, 5, 5, 5, 8, 8, 8, 8] sts, knit to last 5[5, 5, 5, 5, 7, 7, 7, 7] sts, BO rem sts to end of round. 70[76, 80, 86, 90, 96, 100, 106, 110] sts.

Break yarn and place sts on holder. Set aside.



Body

Cast on following the instructions for the Tubular Cast-on method below, or, using MC and middle-sized circ, cast on 209[229, 249, 269, 289, 309, 329, 349, 369] sts using long-tail or similar method and continue to Ribbing.

Tubular cast-on

Using waste yarn, smallest circ, and the crochet provisional cast on, CO 106[116, 126, 136, 146, 156, 166, 176, 186] sts.

Row 1 [RS]: Using MC, k1, (k1, yo) to last 2 sts, k2. 209[229, 249, 269, 289, 309, 329, 349, 369] sts.

Row 2 [WS]: Sl 1 wyif, (sl 1 wyif, k1) to last 2 sts, sl 2 wyif.

Row 3 [RS]: K1, (k1, sl 1 wyif) to last 2 sts, k2.

Rep Rows 2-3 once more.

Change to middle-sized circ.

Ribbing

Row 1 [WS]: Sl 1 wyif, (p1, k1) to last 2 sts, p1, sl 1 wyif.

Row 2 [RS]: K2, (p1, k1) to last st, k1.

Rep Rows 1-2 until piece measures 3 inches / 7.5 cm from cast-on edge, ending after a WS row.

Next row [RS]: Patt 13 and slip these 13 sts to holder. Change to largest long circ and k89[99, 109, 119, 129, 139, 149, 159, 169] (to center of back), k2tog, knit to last 13 sts, slip last 13 sts of row to holder. 182[202, 222, 242, 262, 282, 302, 322, 342] sts rem.

Next row [WS]: K1, purl to last st, k1.

Work Rows 1-21 of Chart B, working chart repeat a total of 18[20, 22, 24, 26, 28, 30, 32, 34] times across each row and attaching and breaking CC as needed. Break CC1 and continue with MC only.

Row 1 [WS]: K1, purl to last st, k1.

Row 2 [RS]: Knit to end.

Rep Rows 1-2 once more, then work Row 1 once.

Work Rows 1-6 of Chart C.

Using CC2, work in St st for 4 rows. Break yarn.



Continue with seven prepared intarsia bobbins as follows:

Begin intarsia:

Set-up row [RS]: Using a CC2 bobbin, k2[2, 4, 4, 4, 4, 6, 6, 6] sts, pm, work Row 1 of Chart D over next 45 sts, attaching a CC3 bobbin and CC2 bobbin as indicated in chart, pm, k22[32, 40, 50, 60, 70, 78, 88, 98] sts with CC2, pm, work Row 1 of Chart D over next 45 sts, attaching CC3 bobbin and CC2 bobbin as indicated in chart, pm, k21[31, 39, 49, 59, 69, 77, 87, 97] sts with CC2, pm, work Row 1 of Chart E over next 45 sts, attaching a CC3 bobbin and CC2 bobbin as indicated in chart, pm, k2[2, 4, 4, 4, 4, 6, 6, 6] sts with CC2. 4 CC2 and 3 CC3 bobbins attached.

Next row [WS]: Using CC2, purl to m with CC2, sl m, work Row 2 of Chart E, sl m, purl to m with CC2, sl m, work Row 2 of Chart D, sl m, purl to m with CC2, sl m, work Row 2 of Chart D, sl m, purl to end with CC2.

Work in St st and charts as est until Row 42 of charts has been completed. Break yarn from bobbins, leaving tails for weaving in.

Next row [RS]: Using CC2, k to end, removing all markers.

Using CC2, work in St st for 3 more rows.

Work Rows 1-6 of Chart F.

Continuing with MC only, work in St st until body measures 16.5 inches / 42 cm, ending after a WS row.

Next row [RS]: K38[43, 48, 53, 58, 61, 66, 71, 76], BO 10[10, 10, 10, 10, 15, 15, 15, 15] sts, knit until there are 86[96, 106, 116, 126, 131, 141, 151, 161] sts on ndl after BO, BO 10[10, 10, 10, 10, 15, 15, 15, 15] sts, knit to end. 162[182, 202, 222, 242, 252, 272, 292, 312] sts.

Next row [WS]: K1, purl to BO, pm, purl across 70[76, 80, 86, 90, 96, 100, 106, 110] held sts of first sleeve, pm, purl to next BO, pm, purl across 70[76, 80, 86, 90, 96, 100, 106, 110] held sts of second sleeve, pm, purl to end. 302[334, 362, 394, 422, 444, 472, 504, 532] sts.



Yoke

Note: Yoke and neck shaping are worked at the same time. *Please read through the next section carefully before proceeding.*

Row 1 [RS]: *Knit to 3 sts before m, ssk, k1, sl m, k1, k2tog; rep from * 3 times more, knit to end. 8 sts dec'd.

Row 2 [WS]: K1, purl to last st, k1.

Next row [RS]: Starting with st 1, work Row 1 of Chart B to 3 sts before first m, using CC1, ssk, k1, sl m, k1, k2tog, starting with st 1, work Row 1 of Chart B to 3 sts before second m, using CC1, ssk, k1, sl m, k1, k2tog, starting with st 1, work Row 1 of Chart B to 3 sts before third m, using CC1, ssk, k1, sl m, k1, k2tog, starting with st 9[4, 9, 4, 9, 7, 2, 7, 2], work Row 1 of Chart B to end, ending after st 12 of chart. 8 sts dec'd.

This row establishes the chart pattern. When working raglan shaping, maintain the chart patt, working 2 sts each side of raglan markers in St st and CC1.

Work 1 row even in patt.

Raglan dec row [RS]: *Patt to 3 sts before m, ssk, k1, sl m, k1, k2tog; rep from * 3 times more, patt to end. 8 sts dec'd.

Rep last 2 rows 9 times more, ending after Row 21 of Chart B. Cut CC yarns and cont with MC only. 206[238, 266, 298, 326, 348, 376, 408, 436] sts rem: 26[31, 36, 41, 46, 49, 54, 59, 64] sts for Right Front, 46[52, 56, 62, 66, 72, 76, 82, 86] for each Sleeve, 62[72, 82, 92, 102, 107, 117, 127, 137] sts for Back, and 26[31, 36, 41, 46, 48, 53, 58, 63] sts for Left Front.

Maintaining 1 st at each end of every row in garter st, work 3 rows in St st.

Rep *Raglan dec row*.

Rep last 4 rows 12[11, 9, 8, 4, 3, 1, 1, 0] times more. 104[96, 80, 72, 40, 32, 16, 16, 8] total raglan sts decreased.

Sizes M-5X Only

Work 1 WS row even in patt.

Rep *Raglan dec row*.

Rep *Raglan dec row* every RS row -[4, 9, 14, 21, 25, 30, 33, 38] more times. -[40, 80, 120, 176, 208, 248, 272, 312] total raglan sts decreased.

All Sizes

AT THE SAME TIME, when piece measures 22[22, 22.5, 22.5, 22.5, 23, 23, 23.5, 23.5] inches / 56[56, 57, 57, 57, 58.5, 58.5, 59.5, 59.5] cm from cast-on, begin working neck shaping as follows:

Neck dec row [RS]: K1, ssk, patt (including any raglan decreases), to last 3 sts, k2tog, k1. 2 sts dec'd.

Work 3[3, 3, 3, 1, 1, 1, 1, 1] in patt without neck decreases, including any raglan decreases.

Rep last 4[4, 4, 4, 2, 2, 2, 2, 2] rows 8[3, 4, 4, 4, 9, 11, 14, 12] times more, then work *Neck dec row* once. 20[10, 12, 12, 12, 22, 26, 32, 28] total neck sts decreased.

Sizes M-1X Only

Work 1 WS row in patt.

Work *Neck dec row*.

Rep last 2 rows -[4, 5, 4, 6, -, -, -, -] times more.. 20[20, 24, 22, 26, 22, 26, 32, 28] total neck sts decreased.

82[82, 82, 84, 84, 86, 86, 88, 88] sts rem after all shaping has been completed.

Note: For all sizes except S, the neck shaping will be completed before the raglan shaping. Continue working neck without shaping while raglan decreases are completed.

BO all sts, removing markers.

FINISHING

Steam block the fronts in preparation for button bands/collar.

Right Button Band and Collar

Place 13 held sts for right button band on middle-sized DPN. With RS facing, pick up 1 st between held sts and body sts. 14 sts in total on needle. Turn and join MC.

Row 1 [WS]: Sl 2 wyif, (p1, k1) to last 2 sts, p1, sl 1 wyif.

Row 2 [RS]: K1, (k1, p1) to last 3 sts, k1, ssk, pick up and knit 1 st between buttonband and body sts. 14 sts.

Rep Rows 1-2 until Right Button Band measures 22[22, 22.5, 22.5, 22.5, 23, 23, 23, 23] inches / 56[56, 57, 57, 57, 58.5, 58.5, 59.5, 59.5] cm from cast-on edge, ending after a RS row.

Right Collar

Row 1 [WS]: Sl 2 wyif, PKP, (k1, p1) to last st, sl 1 wyif. 2 sts inc'd.

Row 2 [RS]: K1, (k1, p1) to last 3 sts, k1, ssk, pick up and knit 1 st between collar and body sts.

Row 3: Sl 2 wyif, (p1, k1) to last 2 sts, p1, sl 1 wyif.

Row 4: As Row 2.

Rep last 4 rows 10 times more, then rep Rows 1-3 once more. 38 sts.

Right Collar Short Rows

Row 1 [RS]: K1, (k1, p1) to last 3 sts, k1, w&t.

Row 2 [WS]: Sl 1 wyif, (k1, p1) to last st, sl 1 wyif.

Row 3 [RS]: K1, (k1, p1) to 3 sts before previously wrapped st, k1, w&t.

Row 4 [WS]: Sl 1 wyif, (k1, p1) to last st, sl 1 wyif.

Rep last 2 rows 13 times more.

Right Back Collar:

Row 1 [RS]: K1, (k1, p1) to last 3 sts (working wrapped sts without picking up wraps), k1, ssk, pick up and knit 1 st between collar and body sts.

Row 2 [WS]: Sl 2 wyif, (p1, k1) to last 2 st, p1, sl 1 wyif.

Rep Rows 1-2 until Right Back Collar reaches the middle back neck, ending after working a RS Row.

Break yarn, leaving a 12-inch/30.5-cm tail. Place all sts on waste yarn.



Left Button Band and Collar

Place 13 held sts for left button band on middle-sized DPN. Pick up 1 st between held sts and body sts and place on needle. 14 sts in total on needle. With RS facing, join MC to beg of row. 14 sts.

Buttonhole row [RS]: K2tog, k1, p1, k1, work One Row Buttonhole, k1, p1, k2. 13 sts.

***Row 1 [WS]: Sl 1 wyif, (p1, k1) to last 2 sts, p1, sl 1 wyif, pick up and knit 1 st between button band and body sts. 14 sts.*

Row 2 [RS]: K2tog, (k1, p1) to last 2 sts, k2. 13 sts.

Rep last 2 rows 7 times more, then rep Row 1 once.

Work Buttonhole row once.

*Rep from ** 6 times more. 8 buttonholes worked in total.*

Rep Rows 1-2 until Left Button Band measures 22[22, 22.5, 22.5, 22.5, 23, 23, 23, 23] inches / 56[56, 57, 57, 57, 58.5, 58.5, 59.5, 59.5] cm from cast-on edge, ending after a RS row.

Left Collar

Note: *Change to middle-sized circ when necessary.*

Row 1 [WS]: Sl 1 wyif, (p1, k1) to last 2 sts, PKP, sl 1 wyif, pick up and knit 1 st between collar and body sts. 2 sts inc'd, plus 1 picked up st.

Row 2 [RS]: K2tog, (k1, p1) to last 2 sts, k2.

Row 3: Sl 1 wyif, (p1, k1) to last 2 sts, p1, sl 1 wyif, pick up and knit 1 st between collar and body sts

Row 4: As Row 2.

Rep last 4 rows 11 times more. 37 sts.

Left Collar Short Rows

Row 1 [WS]: Sl 1 wyif, (p1, k1) to last 2 sts, w&t.

Row 2 [RS]: Sl 1 wyib, (k1, p1) to last 2 sts, k2.

Row 3 [WS]: Sl 1 wyif, (p1, k1) to 2 sts before previously wrapped st, w&t.

Row 4 [RS]: Sl 1 wyib, (k1, p1) to last 2 sts, k2.

Rep last 2 rows 13 times more.

Left Back Collar

Row 1 [WS]: Sl 1 wyif, (p1, k1) to last 2 sts (working wrapped sts without picking up wraps), p1, sl 1 wyif, pick up and knit 1 st between collar and body sts.

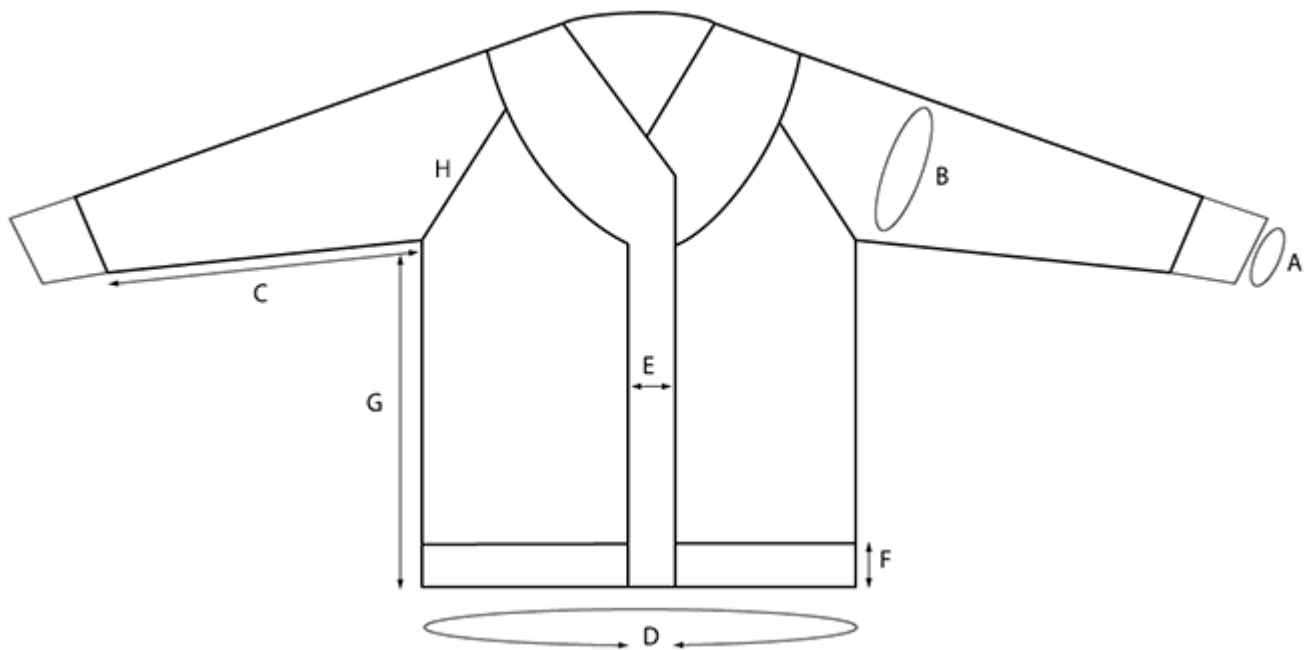
Row 2 [RS]: K2tog, (k1, p1) to last 2 sts, k2.

Rep Rows 1-2 until Left Back Collar reaches the middle back neck, ending after a RS row.

Break yarn, leaving a 12 inch/30.5 cm tail. Place all sts on waste yarn.

Place Right and Left Back Collar sts on DPNs and hold together with WS facing. Using MC and 3-needle bind off, BO all sts.

Seam underarms. Weave in ends. Soak in cool water and wool wash. Wring out excess water in towel. Block to measurements. Using sharp sewing needle and thread, attach eight buttons to button band opposite buttonholes. Reinforce buttonholes with needle and thread by whip-stitching around the edge of each buttonhole.



A вЂЉ Cuff circumference (stretched): 9.25[9.5, 9.5, 10, 10, 10, 10, 10, 11.25] inches / 23.5[24, 24, 25.5, 25.5, 25.5, 25.5, 25.5, 28.5] cm

B вЂЉ Upper arm circumference: 16[17.25, 18, 19.25, 20, 22.25, 23, 24.25, 25] inches / 40.5[44, 45.5, 49, 51, 56.5, 58.5, 61.5, 63.5] cm

C вЂЉ Sleeve length: 18 inches / 45.5 cm

D вЂЉ Body circumference (not including buttonband): 36.5[40.5, 44.5, 48.5, 52.5, 56.5, 60.5, 64.5, 68.5] inches / 92.5[103, 113, 123, 133.5, 143.5, 153.5, 164, 174] cm

E вЂЉ Buttonband width (relaxed): 1.5 inches / 4 cm

F вЂЉ Hem length: 3 inches / 7.5 cm

G вЂЉ Body length: 16.5 inches / 42 cm

H вЂЉ Raglan length: 10.75[11.5, 11.75, 12.75, 12.5, 13, 13.25, 14.25, 15] inches / 27.5[29, 30, 32.5, 32, 33, 33.5, 36, 38] cm

ABOUT THE DESIGNER



Meghan Babin is the co-founder of Hudson + West Co, and runs H+W HQ East from the Hudson River Valley. In her life previous to owning a yarn company, she was the editor of *Interweave Knits/knit.wear*, and the creator and editor of *Wool Studio* (2015-2018). Her knitwear designs are featured in *Interweave Knits*, *knitscene*, *knit.wear*, *Twist Collective*, *Kelbourne Woolens: Lucky Tweed Collection*, and *Knitty*. Follow her on Instagram (@meggospurls) and Hudson + West Co (@hudsonandwestco).

Find all her designs on Ravelry and get pattern support here (info@hudsonandwestco.com).