

Giardino

by Isabell Kraemer



Giardino © 2025

a handknit design by Isabell Kraemer/grasflecken.

*This pattern is for unlimited personal use. Do not
reproduce or sell the pattern, or sell items that
are knitted from this pattern.*

*For pattern support (in English), please contact
grasfleckenbylilalu@gmail.com*

Yarn

mYak Fior di Lino

50% Tibetan Cloud Wool, 35% Baby Yak, 15% Italian Linen [218 yds (200 m)/50 g] ; *shown in color Caffelatte (MC) and Tuscan Fields (CC)*

approximately

MC: 1039 (1149, 1258, 1334, 1443)(1589, 1697, 1816, 1942) yds/ 950 (1050, 1150, 1219, 1319) (1452, 1551, 1660, 1775) m

CC: 129 (136, 142, 148, 153)(162, 166, 166, 173) yds/ 118 (124, 130, 135, 140)(148, 152, 152, 158) m

Needles

US 2 1/2 (3 mm) 16" (40 cm) and 32" (80 cm) circular needle and preferred needle to work small circumferences in the round, for neck CO, body and sleeve edges.

US 3 (3.25 mm) 16" (40 cm) and 32" (80 cm) circular needle and preferred needle to work small circumferences in the round, for body and sleeves.

Gauge

24 sts x 35 rows = 4" (10 cm) square in Stockinette stitch on larger needle after blocking
24 sts x 31 rows = 4" (10 cm) square in stranded colorwork on larger needle after blocking

Sizes

1 (2, 3, 4, 5)(6, 7, 8, 9)

finished bust circumference:

35.75 (39, 42.25, 45.75, 49)(53, 56.25, 59.75, 63)"

89 (97.5, 106, 114, 122.5)(132.5, 141, 149, 157.5) cm

Sample is worn with 4" (10 cm) positive ease at bust (see schematic on the last page for more detailed measurements).

Materials

Stitch holders or waste yarn, stitch markers, tapestry needle, blocking tools.

Abbreviations

BO: bind off

BOR: beginning of the round

CC: contrast color

circ: circumference

CO: cast on

dec: decrease

DS: double stitch (see German short rows)

inc: increase

k: knit

k2tog: knit 2 stitches together (right leaning decrease)

k2tog tbl: knit 2 stitches together through the back loops

kDS: knit double stitch (see German short rows)

LH: left hand

m: marker

MC: main color

M1L: make one left (left leaning increase)

lift loop between stitches from front, knit into back loop

M1R: make one right (right leaning increase)

lift loop between stitches from back, knit into front loop

M1Rp: make one right (right leaning increase)

lift loop between stitches from back, purl into front loop

p: purl

pDS: purl double stitch (see German short rows)

pm: place marker

rnd(s): round(s)

RS: right side

sl m: slip marker

st(s): stitch(es)

ssk: slip 2 stitches, one at a time, knitwise to the right hand needle; return stitches to left hand needle in turned position and knit them together through the back loops (left leaning decrease)

WS: wrong side

(): repeat instructions in brackets

Special techniques and tips

The following links are third party links. Links to third party articles (aka tutorials) and/or websites are solely for information purposes. These other parties are responsible for the content on their website(s). You are encouraged to read and evaluate the privacy and security policies on the specific site you are entering.

German short rows:

http://www.youtube.com/watch?v=i_6PjI20zKA

On a RS row: Knit the number of stitches as stated in the pattern, turn work, bring yarn to front, slip the first stitch as if to purl, bring yarn over the needle to the back of your work and pull tight (this creates the double stitch = DS).

On a WS row: Purl the number of stitches as stated in the pattern, turn work, bring yarn to front, slip the first stitch as if to purl, bring yarn over the needle to the back of your work and pull tight (this creates the double stitch = DS).

Resolving double stitches: When working over double stitches treat them as a single stitch by knitting through both legs of the DS on a RS row (kDS) or purling through both legs of the DS on a WS row (pDS).

Long tail cast-on:

<https://www.purlsoho.com/create/long-tail-cast-on/>

Backwards loop cast-on method:

https://www.youtube.com/watch?v=goOVkdgv_ys

Color dominance:

<https://ysolda.com/blogs/journal/colour-dominance>

Catching floats:

https://www.youtube.com/watch?v=ajppfcE_HAA

Cable cast-on:

<https://www.purlsoho.com/create/cable-cast-on/>

Grafting I-Cord bind-off in the round:

<https://www.youtube.com/watch?v=4dQNueDp4O4>

Giardino is worked seamlessly from the top down. First some short rows are worked back and forth to create a higher back neck and then the yoke is worked in the round with beautiful ornamental colorwork to sleeve separation. The body is then worked in rounds down to the colorwork and hem. Sleeves are worked top down to the cuffs last. No finishing required.

Notes

Body and sleeves can be lengthened or shortened by working more or less rounds before starting the ribbing. Size can be adjusted by working more or less increases or by adding stitches to/reducing the number of stitches at the underarm cast-on.

It is possible to start with a provisional cast-on and decide on any additional neck finishing later.

Please note that any change will affect the yardage.

After increase/decrease rounds you will find totals to check your stitch count.

Instructions

Yoke

With MC and shorter US 2 1/2 (3 mm) needle, CO 104 (110, 110, 112, 112)(114, 114, 114, 116) sts using the long tail cast-on or your preferred method, join to work in the round (being careful not to twist stitches) and place marker for BOR. BOR is at center of back.

Note: Please make sure not to work the cast-on too loose – or work a provisional cast-on and adjust the width of the neckline with the bind-off.

Continue to instructions for your size.

Sizes 1, 2

Rnds 1 + 2: Knit to end, sl BOR m.
Continue to *All sizes*.

Size 3

Rnd 1: Knit to end, sl BOR m.
Rnd 2 (inc rnd): K10, M1L, (k18, M1L) to 10 sts before end, knit to end, sl BOR m. (6 sts inc'd)

- (-, 116, -, -)(-, -, -, -) sts
Continue to *All sizes*.

Size 4

Rnd 1: Knit to end, sl BOR m.
Rnd 2 (inc rnd): (K11, M1L) to 2 sts before end, knit to end, sl BOR m. (10 sts inc'd)

- (-, -, 122, -)(-, -, -, -) sts
Continue to *All sizes*.

Size 5

Rnd 1: Knit to end, sl BOR m.
Rnd 2: (K7, M1L) to end, sl BOR m. (16 sts inc'd)

- (-, -, -, 128)(-, -, -, -) sts
Continue to *All sizes*.

Size 6

Rnd 1: Knit to end, sl BOR m.
Rnd 2 (inc rnd): (K5, M1L) 3 times, (K6, M1L) to 15 sts before end, (k5, M1L) 3 times, sl BOR m. (20 sts inc'd)

- (-, -, -, -)(134, -, -, -) sts
Continue to *All sizes*.

Sizes 7, 8

Rnd 1: Knit to end, sl BOR m.
Rnd 2: K7, M1L, (k4, M1L) to 7 sts before end, knit to end, sl BOR m. (26 sts inc'd)

- (-, -, -, -)(-, 140, 140, -) sts
Continue to *All sizes*.

Size 9

Rnd 1: Knit to end, sl BOR m.
Rnd 2: (K3, M1L) 2 times, (k4, M1L) to 6 sts before end, (k3, M1L) 2 times, sl BOR m. (30 sts inc'd)

- (-, -, -, -)(-, -, -, 146) sts
Continue to *All sizes*.

All sizes

Change to shorter US 3 (3.25 mm) needle.

Next rnd: Knit to end, sl BOR m.

Note: Change to longer US 3 (3.25 mm) circular needle when needed to accommodate the increasing number of stitches.

Short row 1: (RS) K33 (34, 36, 37, 38)(40, 42, 42, 42), turn; **(WS)** DS, purl to BOR m, sl m, p32 (33, 35, 36, 37)(39, 41, 41, 41), turn.

Short row 2: (RS) DS, knit to BOR m, sl m, k1, (k6, M1L) 5 times, knit to DS, kDS, k3, turn; **(WS)** DS, purl to BOR m, sl m, (p6, M1Rp) 5 times, purl to DS, pDS, p3, turn. (10 sts inc'd)

114 (120, 126, 132, 138)(144, 150, 150, 156) sts

Short row 3: (RS) DS, knit to BOR m, sl m, knit to DS, kDS, k3, turn; **(WS)** DS, purl to BOR m, sl m, purl to DS, pDS, p3, turn.

Next row (RS): DS, knit to BOR m, sl m.

Knit 1 round (kDS when you reach them).

Continue to *Colorwork*.

Colorwork (includes 8 inc rounds)

Work **rnds 1 to 51** from chart, changing colors and increasing as indicated. Break CC.

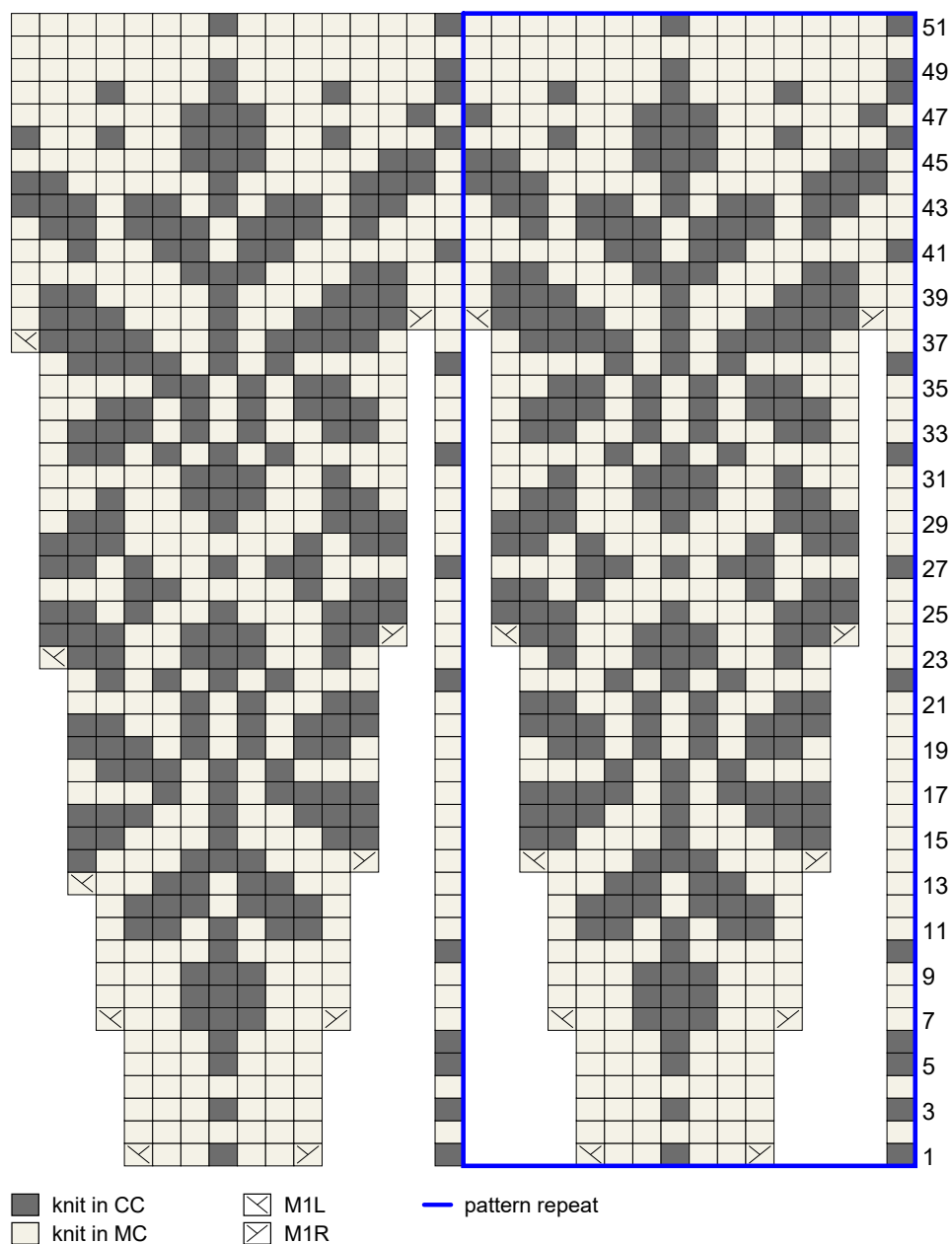


Chart is to be read from bottom to top and from right to left.

For each round you will work a total of 19 (20, 21, 22, 23)(24, 25, 25, 26) pattern repeats.

18 (19, 20, 21, 22)(23, 24, 24, 25) times as shown in the **blue box**, then work the last repeat as indicated (this last “repeat” is different for the very last stitch(es) in **rounds 13 - 47**).

These changes were made to make the beginning of the round less visible in the colorwork pattern.

You may find it helpful to place a marker before the last repeat.

Stitch count after rnd 1: 152 (160, 168, 176, 184)(192, 200, 200, 208) sts

Stitch count after rnd 7: 190 (200, 210, 220, 230)(240, 250, 250, 260) sts

Stitch count after rnd 13: 191 (201, 211, 221, 231)(241, 251, 251, 261) sts

Stitch count after rnd 14: 228 (240, 252, 264, 276)(288, 300, 300, 312) sts

Stitch count after rnd 23: 229 (241, 253, 265, 277)(289, 301, 301, 313) sts

Stitch count after rnd 24: 266 (280, 294, 308, 322)(336, 350, 350, 364) sts

Stitch count after rnd 37: 267 (281, 295, 309, 323)(337, 351, 351, 365) sts

Stitch count after rnd 38: 304 (320, 336, 352, 368)(384, 400, 400, 416) sts

Next rnd: Knit to end, sl BOR m.

Continue to instructions for your size.

Size 1

Continue to *All sizes*.

Size 2

Next rnd (inc rnd): K7, M1L, knit to 7 sts before end, M1L, knit to end, sl BOR m. (2 sts inc'd)

- (322, -, -, -)(-, -, -, -) sts

Continue to *All sizes*.

Size 3

Next rnd (inc rnd): K20, M1L, (k33, M1L) to 19 sts before end, knit to end, sl BOR m. (10 sts inc'd)

- (-, 346, -, -)(-, -, -, -) sts

Continue to *All sizes*.

Size 4

Next rnd (inc rnd): K15, M1L, (k19, M1L) to 14 sts before end, knit to end, sl BOR m. (18 sts inc'd)

- (-, -, 370, -)(-, -, -, -) sts

Continue to *All sizes*.

Size 5

Next rnd (inc rnd): K9, M1L, (k14, M1L) to 9 sts before end, knit to end, sl BOR m. (26 sts inc'd)

- (-, -, -, 394)(-, -, -, -) sts

Continue to *All sizes*.

Size 6

Next rnd (inc rnd): (K11, M1L) to 10 sts before end, knit to end, sl BOR m. (34 sts inc'd)

- (-, -, -, -)(418, -, -, -) sts

Continue to *All sizes*.

Size 7

Next rnd (inc rnd): K20, M1L, (k8, M1L) to 20 sts before end, knit to end, sl BOR m. (46 sts inc'd)

- (-, -, -, -)(-, 446, -, -) sts

Continue to *All sizes*.

Size 8

Next rnd (inc rnd): (K6, M1L, k5, M1L, k5) to end, sl BOR m. (50 sts inc'd)

- (-, -, -, -)(-, -, 450, -) sts

Knit 17 rounds.

Next rnd (inc rnd): (K18, M1L) to 18 sts before end, knit to end, sl BOR m. (24 sts inc'd)

- (-, -, -, -)(-, -, 474, -) sts

Continue to *All sizes*.

Size 9

Next rnd (inc rnd): (K6, M1L, k5, M1L, k5) to end, sl BOR m. (52 sts inc'd)

- (-, -, -, -)(-, -, -, 468) sts

Knit 17 rounds.

Next rnd (inc rnd): (K13, M1L) 4 times, (k14, M1L) 26 times, (k13, M1L) 4 times, sl BOR m. (34 sts inc'd)

- (-, -, -, -)(-, -, -, 502) sts

Continue to *All sizes*.

All sizes

Work in Stockinette stitch in rounds until yoke measures 7.25 (7.75, 8, 8.75, 9) (9.5, 9.75, 9.75, 9.75)" [18.5 (19.5, 20.5, 22, 23)(24, 25, 25, 25) cm] from CO, measured at the center front down.



Separate sleeves and body

Next rnd: K47 (51, 55, 59, 63)(68, 72, 76, 80), place following 59 (60, 64, 68, 72)(74, 80, 86, 92) sleeve stitches on a holder or waste yarn, using the backward loop cast-on, CO 7 (8, 9, 10, 11)(12, 13, 14, 15) sts, **pm (new BOR)**, CO 7 (8, 9, 10, 11)(12, 13, 14, 15) sts, k93 (101, 109, 117, 125)(135, 143, 151, 159) front sts, place following 59 (60, 64, 68, 72)(74, 80, 86, 92) sleeve stitches on a holder or waste yarn, using the backward loop cast-on, CO 7 (8, 9, 10, 11)(12, 13, 14, 15) sts, **pm (side m)**, CO 7 (8, 9, 10, 11)(12, 13, 14, 15) sts, knit to old BOR m (at center of back), remove old BOR m, knit to new BOR m (at center of right underarm), sl BOR m.

214 (234, 254, 274, 294)(318, 338, 358, 378) sts for body

Body

Work in Stockinette stitch in rounds until body measures approximately 12.25" (31 cm) or 2.25" (6 cm) less than desired length from underarm.

Adjust stitch count for colorwork

Sizes 1, 3, 5, 6, 8

Inc rnd: K2, M1L, knit to side m, remove m, k2, M1L, knit to end, sl BOR m. (2 sts inc'd)

216 (-, 256, -, 296)(320, -, 360, -) sts for body
Continue to *Body colorwork*.

Size 2

Inc rnd: (K39, M1L) to side m, remove m, (k39, M1L) to end, sl BOR m. (6 sts inc'd)

240 sts for body
Continue to *Body colorwork*.

Size 4

Inc rnd: (K34, M1L) 3 times, knit to side m, remove m, (k34, M1L) 3 times, knit to end, sl BOR m. (6 sts inc'd)

280 sts for body
Continue to *Body colorwork*.

Size 7

Inc rnd: (K42, M1L) 3 times, knit to side m, remove m, (k42, M1L) 3 times, knit to end, sl BOR m. (6 sts inc'd)

344 sts for body
Continue to *Body colorwork*.

Size 9

Inc rnd: (K47, M1L) 3 times, knit to side m, remove m, (k47, M1L) 3 times, knit to end, sl BOR m. (6 sts inc'd)

384 sts for body
Continue to *Body colorwork*.

Body colorwork

Work **rnds 1 to 11** from chart. Break CC.

Note: Work the colorwork according to the given gauge! If needed, change to a bigger needle size, making sure that the colorwork part is not too tight – otherwise your hem will flip up.

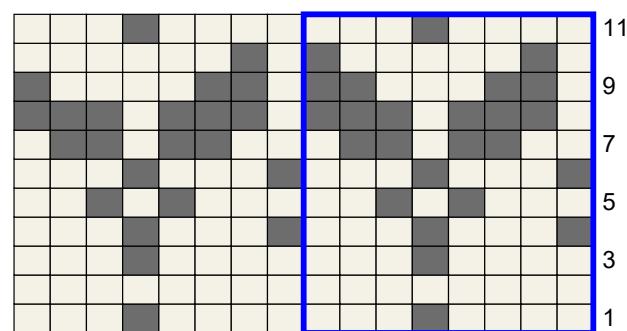


Chart is to be read from bottom to top and from right to left.

For each round you will work a total of 27 (30, 32, 35, 37)(40, 43, 45, 48) pattern repeats. 26 (29, 31, 34, 36)(39, 42, 44, 47) times as shown in the **blue box**, then work the last repeat as indicated (this last "repeat" is different for the very last stitch(es) in **rounds 9 + 10**).

These changes were made to make the beginning of the round less visible in the colorwork pattern.

You may find it helpful to place a marker before the last repeat.

Knit 2 rounds.

Ribbing and I-Cord BO

Change to US 2 1/2 (3 mm) needle.

Rnds 1 to 3: (K1, p1) to end, sl BOR m.

I-Cord bind-off: Using the cable cast-on, CO 3 sts, k2, k2tog tbl, (place 3 sts back to LH needle, k2, k2tog tbl) to end, graft the last 3 stitches to the first 3 stitches.

Sleeves (both alike)

Place held sleeve stitches on US 3 (3.25 mm) DPNs (or preferred needle to work small circumferences in the round), beginning at the center of underarm, pick up and knit 7 (8, 9, 10, 11)(12, 13, 14, 15) sts from underarm CO, knit across sleeve stitches, pick up and knit 7 (8, 9, 10, 11)(12, 13, 14, 15) sts from underarm CO, place marker for BOR.

Note: You may want to pick up one more stitch at each edge of the underarm CO to avoid holes at these points. Please decrease these stitches in the next round to achieve the correct stitch count for your sleeve.

73 (76, 82, 88, 94)(98, 106, 114, 122) sts

Size 1

Dec rnd: K1, k2tog, knit to end, sl BOR m. (1 stitch dec'd)

72 (-, -, -, -)(-, -, -, -) sts
Continue to *All sizes*.

Sizes 2 - 9

Continue to *All sizes*.

All sizes

Work in Stockinette stitch in rounds until sleeve measures 2" (5 cm) from underarm.

Dec rnd: K1, k2tog, knit to last 3 sts, ssk, k1, sl BOR m. (2 sts dec'd)

70 (74, 80, 86, 92)(96, 104, 112, 120) sts

Repeat **dec rnd** every

12 (10, 9, 7, 6)(6, 5, 4, 4) rounds

(this means you will work 11 (9, 8, 6, 5)(5, 4, 3, 3) rounds in Stockinette stitch, then work dec rnd)

9 (11, 12, 15, 18)(19, 23, 26, 25) times.

52 (52, 56, 56, 56)(58, 58, 60, 70) sts

Sizes 1 - 8

Continue to *All sizes*.

Size 9

Repeat **dec rnd** every 3 rounds 5 more times.

- (-, -, -, -)(-, -, -, 60) sts

All sizes

Continue in Stockinette stitch in rounds until sleeve measures approximately 16.75" (42.5 cm), or 0.5" (1.5 cm) less than desired length from underarm.

Sleeve ribbing and I-Cord BO

Change to US 2 1/2 (3 mm) needle.

Rnds 1 to 3: (K1, p1) to end, sl BOR m.

I-Cord bind-off: Using the cable cast-on, CO 3 sts, k2, k2tog tbl, (place 3 sts back to LH needle, k2, k2tog tbl) to end, graft the last 3 stitches to the first 3 stitches.

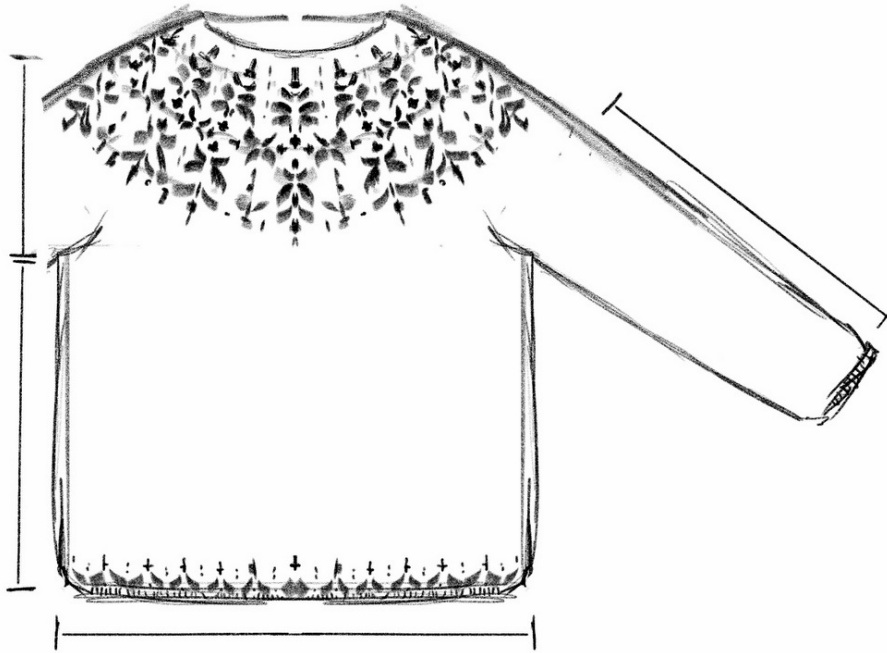
Repeat instructions for second sleeve.

Finishing

Block sweater to measurements and weave in ends.

Note: If you opted for a provisional cast-on, undo the provisional cast-on, place live stitches on a US 2 1/2 (3 mm) needle and bind off all stitches knitwise or add any neck finishing you prefer.

Schematic



Measurements in inches

Bust circ: 35.75 (39, 42.25, 45.75, 49)(53, 56.25, 59.75, 63)

Upper arm circ: 12 (12.75, 13.75, 14.75, 15.75) (16.25, 17.75, 19, 20.25)

Yoke depth (center front): 7.25 (7.75, 8, 8.75, 9) (9.5, 9.75, 9.75, 9.75)

Body length from underarm: +/- 14.5

Sleeve length from underarm: +/- 17.25

Measurements in cm

Bust circ: 89 (97.5, 106, 114, 122.5)(132.5, 141, 149, 157.5)

Upper arm circ: 30 (31.5, 34, 36.5, 39)(41, 44, 47.5, 51)

Yoke depth (center front): 18.5 (19.5, 20.5, 22, 23)(24, 25, 25, 25) cm

Body length from underarm: +/- 37

Sleeve length from underarm: +/- 44