



FORGE

Cabled Watchcap

by Jared Flood

FORGE BLUEPRINT

MATERIALS

Approximately 240 yards of worsted weight wool yarn
2 skeins of Brooklyn Tweed *Shelter* (100% American Targhee-Columbia Wool; 140 yards/50g)
Photographed in colors *Fauna & Pumpernickel*

GAUGE

Working Gauge

42 stitches & 42 rounds = 5" in cable pattern with Gauge Needle;
measured over Body Chart (stitches 8-49 of chart) from relaxed fabric
before blocking

Finished Gauge

38 stitches & 42 rounds = 5" in cable pattern with Gauge Needle;
measured over Body Chart (stitches 10-47 of chart) from relaxed
fabric after blocking (no stretch added; change in gauge comes from
natural bloom of fabric when wet-blocked)

FINISHED DIMENSIONS

20" circumference at widest point (not including brim), 8½" height;
measurements taken from relaxed (unstretched) hat after blocking

ADDITIONAL TOOLS

A slippery (ideally cotton, bamboo or silk) waste yarn in a contrasting
color (for provisional and tubular cast ons), crochet hook in a size
equal to or slightly smaller than your Gauge Needle, stitch markers

SKILL LEVEL

● ● ● ● ○

NEEDLES

Size A ("Gauge Needle")

One 16" circular needle and one spare DPN or straight needle in size
needed to obtain gauge
Suggested Size: 4½ mm (US 7)

Size B

One set of DPNs (or long circular, if working Magic Loop method),
one size smaller than Gauge Needle
Suggested Size: 4 mm (US 6)

Size C

One 16" circular needle one size larger than Gauge Needle
Suggested Size: 5 mm (US 8)

Size D

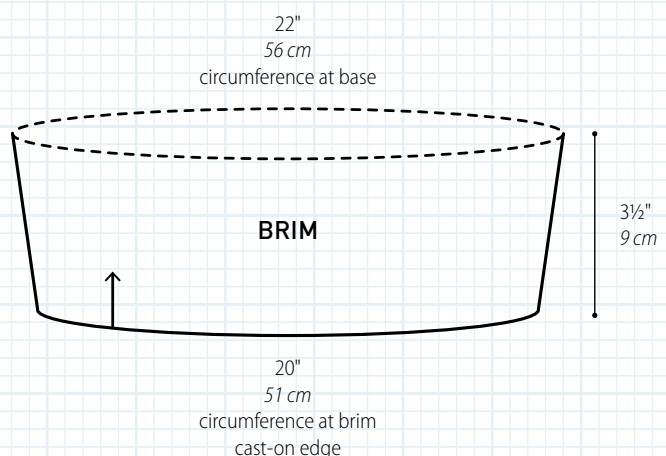
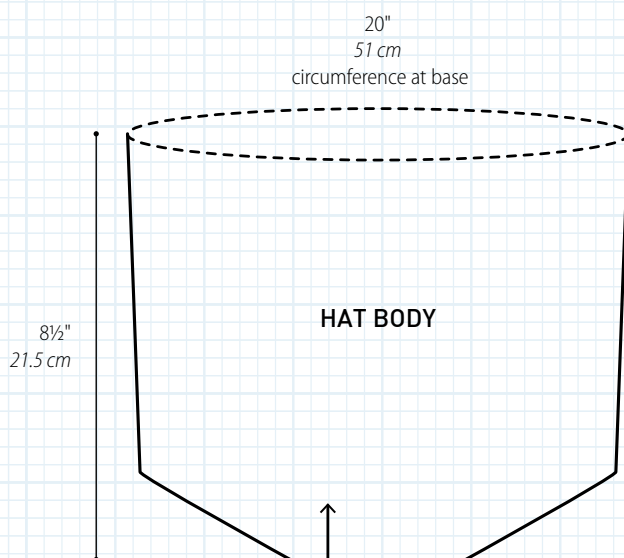
One 16" circular needle two sizes larger than Gauge Needle
Suggested Size: 5½ mm (US 9)

Size E (for Tubular Cast On only)

One 16" circular needle two sizes smaller than Gauge Needle
Suggested Size: 3¾ mm (US 5)

Size F (for I-Cord Joinery Bind Off only)

A single DPN (or straight needle) three sizes larger than Gauge
Needle, for working bind off
Suggested Size: 6 mm (US 10)



Note: Dashed lines indicate live stitches that are finished with a
Joinery Bind Off

ABOUT THIS DESIGN

Forge is a classic watch-cap with a twist – the cabled fabric adorning the main body of the hat is mirrored on the faux fold-over brim. The shape of the crown and the classic OXO cable motifs are a nostalgic nod to the woolen workwear of fishermen. Worked from the top-down, the hat's finished length is customizable. Brim and body are worked in two separate pieces and joined together with a clean, decorative bind off around the hat's base. Wear it in a bright accent color, or a subtle, natural tone and add a rugged, classic twist to your favorite Fall and Winter looks.

CONSTRUCTION NOTES

- Hat begins with a provisional cast on. During finishing, you will return to your provisional stitches and close the top of hat with a Joinery Bind Off.
- Hat is worked from the top down; final length is adjustable.
- Brim is also worked from the top down, separately from main body of hat.
- Hat is joined to brim by way of an I-Cord Joinery Bind Off.
- Hat is shaped completely through the use of varying needle sizes. You will use a total of 6 different needle sizes as you work.

HAT – BRIM

Tubular Cast On

Using Needle E (2 sizes smaller than your Gauge Needle), waste yarn (see "Additional Tools" on Blueprint) and your preferred cast-on method, cast on 54 stitches.

Foundation Row (WS): Using your working yarn, purl all stitches in row. Note that this row is worked directly into your waste yarn stitches.

Row 1 (Increase Row; RS): *Knit 1, insert your L needle tip from front-to-back under the running thread between the stitch you just worked and the next stitch on L needle, then purl this stitch (increasing one); repeat from * until one stitch remains in row, slip the final knit stitch purlwise. (107 stitches now on needle)

Now, join your work into the round, being careful not to twist your ring of stitches. Slip the first knit stitch of your round purlwise, then place a marker on needle. Your stitches will now be arranged such that the round begins with a purl stitch and ends with a pair of knit stitches.

Round 2 (Tubular Knit Round): *Bring yarn to front, slip 1 purlwise (this is a purl stitch), bring yarn to back, knit 1; repeat from * until 3 stitches remains in row, bring yarn to front and slip 1 purlwise, bring yarn to back and k2tog – these are the two knit stitches. (1 stitch has been decreased; 106 stitches remain on needle)

Round 3 (Tubular Purl Round): *Bring yarn to front, purl 1, bring yarn to back, slip 1 purlwise (this is a knit stitch); repeat from * to the end of round.

Round 4 (Tubular Knit Round): *Bring yarn to front, slip 1 purlwise (this is a purl stitch), bring yarn to back, knit 1; repeat from * to the end of round.

Round 5: You have now completed your Tubular Rounds and will begin working your full rib. Switch to Needle B and *purl 1, knit 1; repeating from * to the end of round.

You have now completed the tubular cast-on edge and will begin working the cable pattern of hat brim. You may remove the waste yarn from your Tubular Edge at any time by carefully snipping it with scissors and unraveling it. Be very careful during this process so that you do not accidentally cut any of your main yarn. You may leave your waste yarn in your project through completion of knitting and blocking if you wish. If you choose to leave it in, the waste yarn will protect your tubular edge from being overstretched during knitting.

Switch to circular Needle A (4½ mm/US 7) and work Rounds 1-8 of Brim Chart. On Round 1 of chart, place a marker on your needle after working the first instance of chart – this will indicate the side of your brim, directly opposite your beginning-of-round ("BOR").

Chart Notes

- Round 1 of Brim Chart is an increase round; after working this round you will have a total of 122 stitches in your round.
- All rounds are worked circularly and read from right to left.
- Brim Chart is repeated twice per round – one instance between each pair of markers.

Switch to circular Needle C (sugg. 5 mm/US 8) and work Rounds 9-20 of Brim Chart.

Switch to circular Needle D (sugg. 5½ mm/US 9) and work Rounds 21-26 of Brim Chart.

Chart Notes

- Round 26 is a decrease round; upon completion of this round you will have a total of 100 stitches on your needle.

Set hat brim aside, leaving all remaining stitches live on Needle D. You will now work hat body separately.

HAT – MAIN BODY

With waste yarn, crochet hook and DPNs (or long circular, if using the Magic Loop Method) in Needle Size B (4 mm/US 6), cast on 67 stitches using the Provisional Method. Do not join work into the round yet.

Row 1 (RS): With working yarn, knit 5, k2tog, knit 27, place a marker, knit 33.

Upon completion of this row, you will have decreased one stitch; you now have 66 total stitches on your needle. When returning to a provisional cast-on edge, you will always have one stitch less than your original cast-on number. (Because we will need 66 stitches when picking up the provisional edge, the original cast-on number was 67 and has been decreased to 66 going in this direction.)

Place a second marker on your needle (to indicate BOR) and join work into the round – we recommend using a marker of an alternate color here so that you may recognize the BOR more easily as you work.

You will now work the remainder of the hat body circularly; you have two stitch markers on your needle, indicating the sides of your hat. One indicates the BOR while the second indicates the halfway point of your round.

Work Crown

With Needle B, work Rounds 1-24 of Crown Chart.

Chart Notes

- All rounds are worked circularly and read from right to left.
- Crown Chart is repeated twice per round – one instance between each pair of markers.

Upon completion of Crown Chart, you will have increased a total of 56 stitches; you now have 122 stitches on your needle.

Work Hat Body

Switch to circular Needle A (sugg. 4½ mm/US 7) and work Rounds 1-32 of Body Chart. Refer to *Chart Notes* for Crown Chart, as they are also applicable to Body Chart.

Work Rounds 1-13 of Ribbing Chart.

Chart Note

- Row 1 of Ribbing Chart is a decrease round; upon completion of this round you will have worked a total of 22 decreases and have 100 stitches on your needle.

If you wish to add length to your finished hat, you may do so by repeating Rows 11 & 12 of Ribbing Chart as many times as needed before working Row 13. Note that the ribbing portion of your hat should not exceed 3½" (the height of Hat Brim), or it will be visible when hat is finished.

You have now completed the hat body. Leave the live stitches on your circular needle.



FINISHING

Prepare to Close Crown

Return to provisional cast-on edge of Hat Body and carefully unpick waste yarn, sliding first 33 freed stitches onto circular Needle E (3¾ mm/US 5) as you work, then the second set of 33 onto circular Needle B (4 mm/US 6).

Now rearrange your stitches so that the first stitch on each needle corresponds to the placement of the red dot (•) on the Crown Chart. You now have the stitches from the front half of the hat on your front needle and back half of the hat on your back needle.

Turn hat inside out (with WSs facing you) and mount stitches onto L needle tips, ready to work the Joinery Bind Off. Hold the needles so that one is in the front, and one is in the back, with the sets of 33 stitches running parallel to one another.

Work Joinery Bind Off

Using spare Needle A (or a single DPN) and joining new working yarn, enter into the first two stitches on front needle as if to k2tog, then enter into the first stitch on the back needle as if to knit, knit these three stitches together (one stitch now on R needle), *enter into the first stitch on the front needle and then the first stitch on the back needle and knit these two stitches together, pass the second stitch on your R needle over the first stitch as if to bind off (1 stitch remains

on R needle); repeat from * until 1 stitch remains on front needle and two stitches remain on back needle.

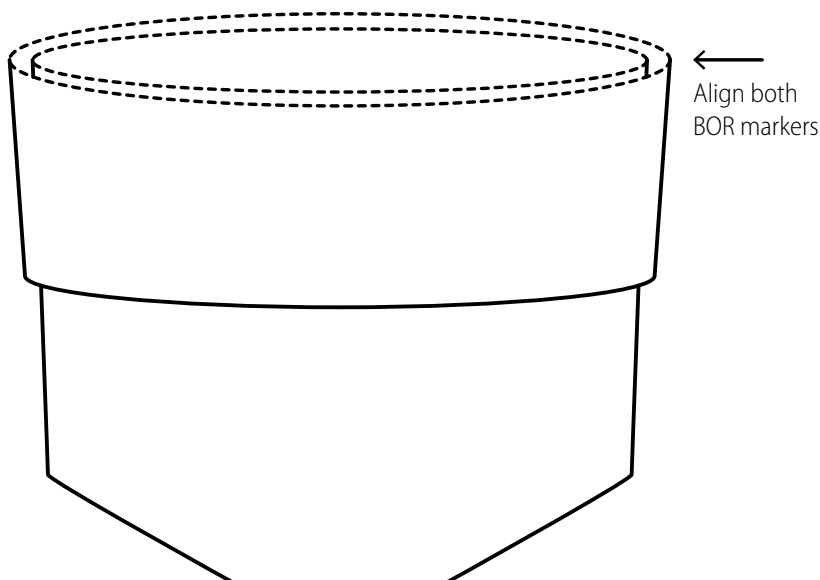
Now, enter into the first stitch on front needle and the final two stitches on back needle (as if to k2tog) and knit these three stitches together (no more stitches remain on L needles, two stitches now on R needle). Pass the second stitch on R needle over the first stitch as if to bind off. Break yarn, leaving a 6-8" tail, and pull it out from final stitch to secure your end. Flip hat so that RS is now facing – crown is closed.

Prepare Body and Brim To Be Joined

You will now join the body and brim of your hat by working an I-Cord Joinery Bind Off. The live stitches of the hat body are currently on circular Needle A and the live stitches of the brim are currently on circular needle D.

With RSs facing outward, place hat body inside of hat brim, aligning BOR markers at the right edge, as illustrated in the Assembly Diagram below. Slide the work so that the first stitch of each round (for both rings of stitches) is on the L needle tips, ready to be worked. You now have two rounds of 100 live stitches running parallel – one nested inside the other.

ASSEMBLY DIAGRAM



Work I-Cord Joinery Bind Off

Using Needle F (a DPN or spare straight needle) and a new piece of working yarn, cast on 3 stitches using the Provisional Method. Slip these new cast-on stitches onto the L needle tip of Front Needle (they will be sitting adjacent to the live stitches of hat brim).

- *Knit 2 I-cord stitches from front needle only, with R needle tip enter into the next two stitches on the front needle (1 I-cord stitch + 1 Brim stitch) as if to k2tog *through the back loops*, then enter R needle tip through the next stitch on back needle (3 stitches have been entered with R needle tip) and knit these 3 stitches together. Slide the three stitches on R needle tip back onto front needle; repeat from
- * until all hat stitches have been joined/bound off.

Note that you are using a larger needle to work this bind off to keep the necessary elasticity of this edge.

You now have 3 live stitches remaining on R needle. Carefully unpick the provisional stitches at the beginning of I-cord and slip them onto a spare needle. Graft both sets of 3 stitches together to close the gap invisibly. If you did not do a provisional cast on at the beginning of the I-cord, sew the remaining live stitches to your cast-on edge using duplicate stitch to camouflage the join.

SPECIAL TECHNIQUES

Provisional Cast On: Crochet Chain Method

With waste yarn and crochet hook, crochet a chain several chains longer than the number of stitches that are required to be cast on. Fasten off. With knitting needle and working yarn, pick up and knit the required number of stitches into the “bumps” on the bottom of the crochet chain, beginning and ending a few chains from each end. Begin piece as instructed in pattern.

When you are ready to return to these stitches and work in the other direction, undo the chain where it was fastened off and carefully pull out the waste yarn, thus “unzipping” the stitches. Transfer the released stitches to your knitting needle as they are unfastened.

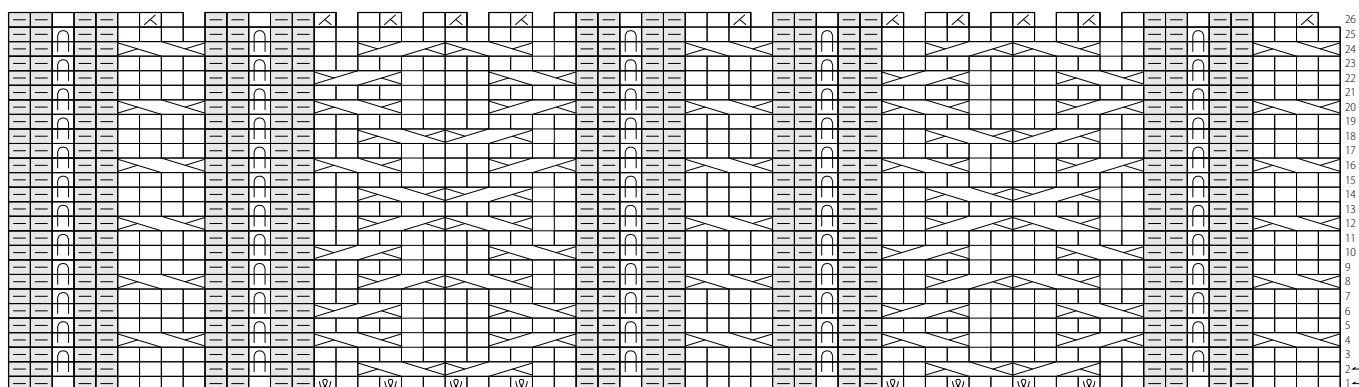
Blocking

Fill a sink or basin with warm water and a small amount of delicate dish soap or rinseless wool wash. Submerge fabric in water, gently squeezing out any air bubbles so that the piece can remain under water without being held there. Soak work for 30 minutes, allowing fabric to become completely saturated.

Drain the sink and remove work. If you have used dish soap (rather than rinseless wool wash), fill the sink again once or twice to rinse the soap from your fabric. Never place knitting directly under running water.




BRIM CHART

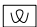



LEGEND

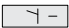
 **Knit:** Knit stitch

 **Purl:** Purl stitch

 **K2tog:** Knit two stitches together (*1 stitch decreased*)

 **Backward Loop:** Make 1 by creating a firm backward loop on R needle (*1 stitch increased*)

 **Tuck (Knit):** On Row 1 of symbol, with yarn in front, slip 1 stitch purlwise from L needle, bring yarn to back of work over R needle creating a YO on top of slipped stitch. On Row 2 of symbol, knit the stitch together with its corresponding YO from row below.

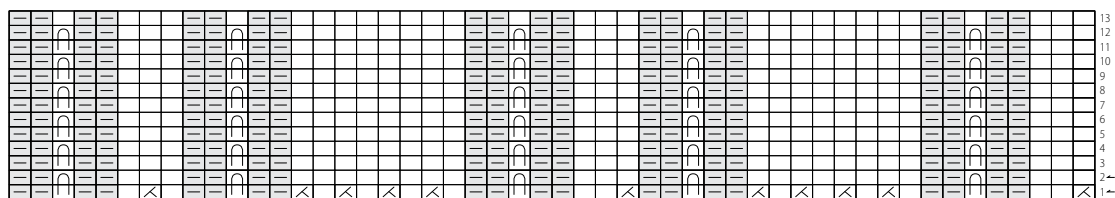
 **PFB:** Purl into the front and back of the same stitch (*1 stitch increased*)

 **2/2 LC:** Slip 2 stitches to CN and *hold in front*. Knit 2 stitches from L needle. Knit 2 stitches from CN

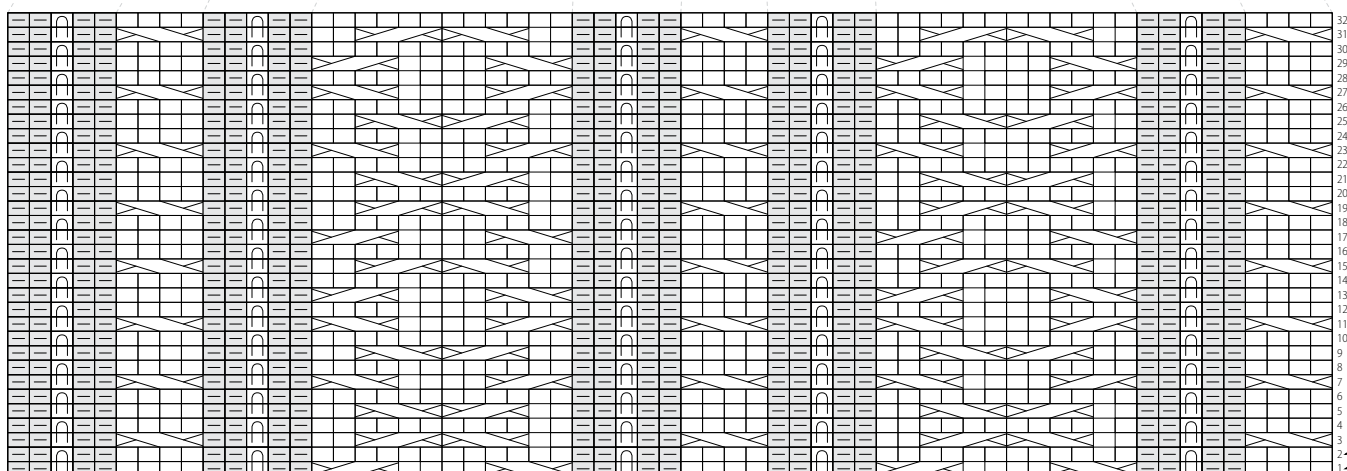
 **2/2 RC:** Slip 2 stitches to CN and *hold in back*. Knit 2 stitches from L needle. Knit 2 stitches from CN

----- **Guide:** These guide lines are provided to help you keep your place in the chart when crossing over gaps between symbols

RIBBING CHART



BODY CHART



CROWN CHART

