

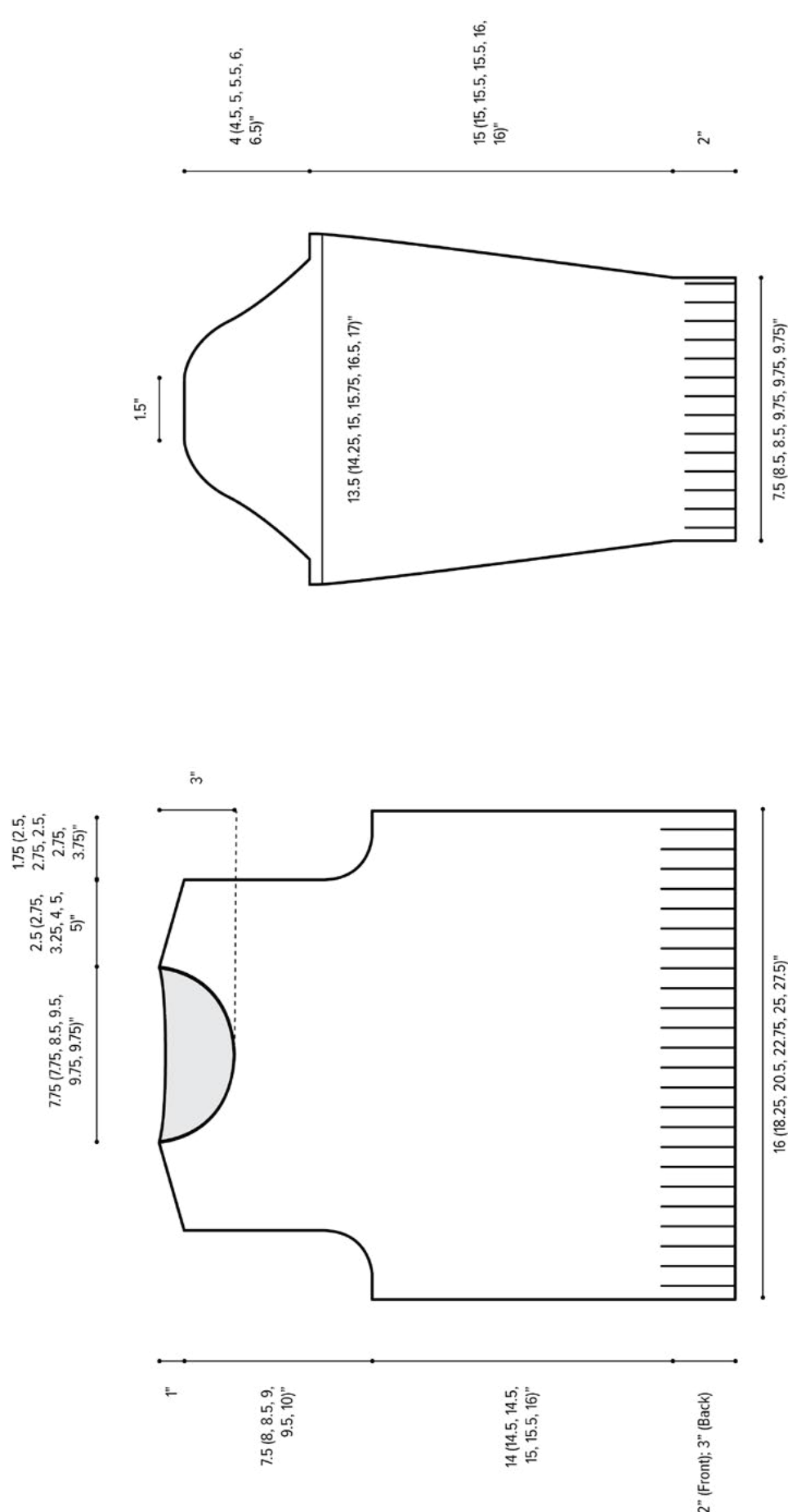


F L E U R I



by
Michele
Wang

FLEURI SCHEMATIC



FLEURI INFORMATION

Yarn

Approximately 1615 (1825, 2060, 2290, 2540, 2785) yds of worsted weight yarn.

8 (9, 10, 11, 12, 13) skeins of The Plucky Knitter Traveler Aran (65% Extrafine Superwash Merino Wool / 20% Mulberry Silk / 15% Yak; 220 yds; 4 oz.)

Sample shown in color - Triple Crown

Note: When using hand-dyed yarns it is highly recommended to alternate between 2 or 3 skeins every row or every other row. It prevents color blocking between skeins.

Finished Measurements

32 (36.5, 41, 45.5, 50, 55)" at bust

Suggested ease: +2.5 - 4"

Gauge

28 sts // 33 rows = 4 inches in Fleuri Cabled Pattern with Gauge Needle

20 sts // 28 rows = 4 inches in Stockinette with Gauge Needle

Needles:

Gauge Needle

24" or 32" circular needle needed to obtain gauge.

Suggested size: US 7

Smaller Needle

24" or 32" circular needle one size smaller than Gauge Needle

Suggested size: US 6

Turtleneck Needle

16" circular needle two sizes smaller than Gauge Needle

Suggested size: US 5

Tools/Notions:

- Cable Needle
- Stitch Markers
- Tapestry Needle
- Blocking Tools



FLEURI INFORMATION

ABBREVIATIONS

2/2 RC: Sl2 sts onto CN and hold to back. K next 2 sts, then k2 sts from cable needle.

BO: Bind off

CN: Cable Needle

CO: Cast on

Cont: Continue

K: Knit

K2tog: K next two sts on L needle together. (1 st decreased.)

L: Left

M1L (Make 1 Left): With L needle tip, pick up the running thread between st just worked and first st on L needle from front to back. K the running thread through the back loop. (1 st increased; leans left)

M1R (Make 1 Right): With L needle tip, pick up the running thread between st just worked and first st on L needle from back to front. K the running thread through the front loop. (1 st increased; leans left)

P: Purl

PM: Place marker

R: Right

Rep: Repeat

RS: Right side

SK-wyib: With yarn held in back, sl first st of row as if to k, bring yarn to front, ready to work next st as stated in pattern

SL: Slip

SM: Sl marker

SP-wyif: With yarn held in front, sl first st of row as if to p through the back loop, bring yarn to back, ready to work next st as stated in pattern.

SSK: Slip the next two sts on L needle as if to k, individually. Then k them together through the back. (1 st decreased.)

St(s): Stitch(es)

WS: Wrong side

WYIB (With yarn in back): Bring working yarn to the back between the needles.

WYIF (With yarn in front): Bring working yarn to the front between the needles.

PATTERN NOTES

- All pieces are worked flat from bottom-up, then seamed together. Sts are picked up around the neck and knit out for the turtleneck.
- When cabling is incorporated into a ribbed hem, the edge can flare. If you find this to be the case, CO the pieces with an even smaller needle, work 2 rows and then change to Smaller Needle.
- Front hem ribbing is 1" shorter than back hem ribbing.
- When BO over cabled fabric, refer to the Special Techniques section for instructions.
- The Sloped Bind-off is used for bound-off neckline and shoulder sts (see Special Techniques).
- { } indicates a selvedge st.

Credits

Design // Layout: Michele Wang
Photography // Model: The Plucky Knitter
Technical Editor: Renee Lorion
A Special Thanks to Sarah, Hayley and the whole PK Family.

FLEURI PATTERN

BACK

CO 112 (128, 144, 160, 176, 192) sts with Smaller Needle.

Row 1 (RS): {SP-wyif}, k1, p1, *k2, p1, k4, p1; rep from * to last 5 sts, k2, p1, k1, {k1}.

Row 2 (WS): {SK-wyib}, p1, k1, p2, *k1, p4, k1, p2; rep from * to last 3 sts, k1, p1, {p1}.

(Change to Gauge Needle)

Row 3: {SP-wyif}, k1, p1, *k2, p1, 2/2 RC, p1; rep from * to last 5 sts, k2, p1, k1, {k1}

Row 4: as for Row 2

** Cont with larger needle, rep rows 1-4 until piece measures approximately 3" from CO edge, ending on Row 2.

Next row (RS): {K1}, k1, [p1, k2, p1, 2/2 RC] 2 (3, 2, 3, 2, 3) times, p2, PM, begin and work Fleuri Chart over next 72 (72, 104, 104, 136, 136) sts (*work 32 st rep 2 (2, 3, 3, 4, 4) times, work to end of chart*), PM, p2, [2/2 RC, p1, k2, p1] 2 (3, 2, 3, 2, 3) times, k1, {k1}.

Next row (WS): {K1}, p1, [k1, p2, k1, p4] 2 (3, 2, 3, 2, 3) times, k2, SM, cont Fleuri Chart over next 72 (72, 104, 104, 136, 136) sts, SM, k2, [p4, k1, p2, k1] 2 (3, 2, 3, 2, 3) times, p1, {k1}.

Next row: {K1}, k1, [p1, k2, p1, k4] 2 (3, 2, 3, 2, 3) times, p2, PM, begin and work Fleuri Chart over next 72 (72, 104, 104, 136, 136) sts (*work 32 st rep 2 (2, 3, 3, 4, 4) times, work to end of chart*), PM, p2, [k4, p1, k2, p1] 2 (3, 2, 3, 2, 3) times, k1, {k1}.

Next row: {K1}, p1, [k1, p2, k1, p4] 2 (3, 2, 3, 2, 3) times, k2, SM, cont Fleuri Chart over next 72 (72, 104, 104, 136, 136) sts, SM, k2, [p4, k1, p2, k1] 2 (3, 2, 3, 2, 3) times, p1, {k1}.

Cont in established pattern until piece measures approximately 17 (17.5, 17.5, 18, 18.5, 19)" from cast-on edge, ending on a WS row.

Shape Armholes

Note: Cont working in established pattern as you bind-off for armholes.

BO 6 (8, 9, 8, 9, 12) sts at the beginning of the next 2 rows, then BO 2 (4, 4, 4, 4, 7) sts at the beginning of following 2 rows, then BO 2 (3, 3, 3, 3, 4) sts at the beginning of following 2 rows, then BO 1 st at the beginning of following 4 (6, 6, 6, 6, 8) rows—88 (92, 106, 124, 138, 138) sts.

Cont in established pattern until armhole measures approximately 7.5 (8, 8.5, 9, 9.5, 10)", ending on a WS row.

Shape Shoulders and Back Neck

BO 4 (5, 6, 7, 9, 9) sts at the beginning of next row, and work in established pattern over next 31 (32, 37, 44, 49, 49) sts. Then BO the next 18 (18, 20, 22, 22, 22) sts, work in established pattern to end. Cont working on back left shoulder sts only.

Next row (WS): BO 4 (5, 6, 7, 9, 9) sts, work in established pattern to end.

Next row: BO 18 (18, 20, 22, 23, 23) sts, work in established pattern to end.

BO 4 (5, 6, 7, 9, 9) sts at shoulder edge twice more, then BO 5 (4, 5, 8, 8, 8) sts at shoulder edge once.

With WS facing, reattach yarn to back right shoulder sts.

Next row: BO 18 (18, 20, 22, 23, 23) sts, work in established pattern to end.

BO 4 (5, 6, 7, 9, 9) sts along shoulder edge twice more, then BO 5 (4, 5, 8, 8, 8) sts along shoulder edge once.

FRONT

WORK AS FOR BACK UNTIL **.

Cont with larger needle, rep rows 1-4 until piece measures approximately 2" from CO edge, ending on Row 2.

Next row (RS): {K1}, k1, [p1, k2, p1, 2/2 RC] 2 (3, 2, 3, 2, 3) times, p2, PM, begin and work Fleuri Chart over next 72 (72, 104, 104, 136, 136) sts (*work 32 st rep 2 (2, 3, 3, 4, 4) times, work to end of chart*), PM, p2, [2/2 RC, p1, k2, p1] 2 (3, 2, 3, 2, 3) times, k1, {k1}.

Next row (WS): {K1}, p1, [k1, p2, k1, p4] 2 (3, 2, 3, 2, 3) times, k2, SM, cont Fleuri Chart over next 72 (72, 104, 104, 136, 136) sts, SM, k2, [p4, k1, p2, k1] 2 (3, 2, 3, 2, 3) times, p1, {k1}.

Next row: {K1}, k1, [p1, k2, p1, k4] 2 (3, 2, 3, 2, 3) times, p2, PM, begin and work Fleuri Chart over next 72 (72, 104, 104, 136, 136) sts (*work 32 st rep 2 (2, 3, 3, 4, 4) times, work to end of chart*), PM, p2, [k4, p1, k2, p1] 2 (3, 2, 3, 2, 3) times, k1, {k1}.

Next row: {K1}, p1, [k1, p2, k1, p4] 2 (3, 2, 3, 2, 3) times, k2, SM, cont Fleuri Chart over next 72 (72, 104, 104, 136, 136) sts, SM, k2, [p4, k1, p2, k1] 2 (3, 2, 3, 2, 3) times, p1, {k1}.

Cont in established pattern until piece measures approximately 16 (16.5, 16.5, 17, 17.5, 18)" from cast-on edge, ending on a WS row.

Shape Armholes

Note: Cont working in established pattern as you bind-off for armholes.

BO 6 (8, 9, 8, 9, 12) sts at the beginning of the next 2 rows, then BO 2 (4, 4, 4, 4, 7) sts at the beginning of following 2 rows, then BO 2 (3, 3, 3, 3, 4) sts at the beginning of following 2 rows, then BO 1 st at the beginning of following 4 (6, 6, 6, 6, 8) rows—88 (92, 106, 124, 138, 138) sts.

Cont in established pattern until armhole measures approximately 5.5 (6, 6.5, 7, 7.5, 8)", ending on a WS row.

Shape Front Neck

Work in established pattern over next 35 (37, 43, 51, 58, 58) sts, BO next 18 (18, 20, 22, 22, 22) sts, work in established pattern to end. Cont working on front right shoulder sts only. BO 9 (9, 10, 11, 12, 12) sts at neck edge once, then 6 (6, 6, 7, 7, 7) sts once, then 3 (3, 4, 4, 4, 4) sts once.

Shape Front Right Shoulder

Cont in established pattern until armhole measures approximately 7.5 (8, 8.5, 9, 9.5, 10)", ending on a RS row.

BO 4 (5, 6, 7, 9, 9) sts at shoulder edge three times, then 5 (4, 5, 8, 8, 8) sts once.

With WS facing, reattach yarn to the front left shoulder sts.

BO 9 (9, 10, 11, 12, 12) sts at neck edge once, then 6 (6, 6, 7, 7, 7) sts once, then 3 (3, 4, 4, 4, 4) sts once.

Shape Front Left Shoulder

Cont in established pattern until armhole measures approximately 7.5 (8, 8.5, 9, 9.5, 10)", ending on a WS row.

BO 4 (5, 6, 7, 9, 9) sts at shoulder edge three times, then 5 (4, 5, 8, 8, 8) sts once.

SLEEVES (make 2)

CO 52 (60, 60, 68, 68, 68) sts with Smaller Needle.

Row 1 (RS): {K1}, [k2, p1, k4, p1] 6 (7, 7, 8, 8, 8) times, k2, {k1}.

Row 2: {K1}, [p2, k1, p4, k1] 6 (7, 7, 8, 8, 8) times, p2, {k1}.

Row 3: {K1}, [k2, p1, 2/2 RC] 6 (7, 7, 8, 8, 8) times, k2, {k1}.

Row 4: work as for Row 2.

Rep the last 4 rows until piece measures approximately 2", ending on a RS row.

(Change to Gauge Needle.)

Next row (WS): {K1}, p1, [p2tog, p2] 11 (13, 13, 15, 15, 15) times, p2tog, p1, p2tog, {k1}. (39 (45, 45, 51, 51, 51) sts)

Next row: {K1}, k to last st, {K1}.

Next row: {K1}, p to last st, {k1}.



Cont in established pattern until piece measures approximately 3" from cast-on edge, ending on a WS row.

On the next row, and the following 6th row 13 (12, 14, 13, 15, 16) more times, perform a Sleeve Increase Row as follows:

Sleeve Increase Row (RS): {K1}, k2, M1L, k to last 3 sts, M1R, k2, {k1}. (2 sts increased.)

Once all Sleeve Increase Rows have been completed, 67 (71, 75, 79, 83, 85) sts will be on needles.

Cont in established pattern until piece measures approximately 17 (17, 17.5, 17.5, 18, 18)" from cast-on edge, ending on a WS row.

Sleeve Cap Shaping

BO 6 (8, 9, 8, 9, 12) sts at the beginning of the next two rows, then BO 2 (2, 2, 2, 2, 4) sts at the beginning of the following two rows, then BO 1 st at the beginning of the following 4 (12, 14, 16, 22, 38) rows, then BO 2 sts at the beginning of the following 20 (16, 16, 18, 16, 4) rows, then BO the final 7 sts.

FINISHING

Wet-block all pieces to schematic measurements. Once all pieces are completely dry, seam together the front and back pieces at the shoulder seams.

Turtleneck (mult 2 sts)

With 16" circular Turtleneck Needle, beginning at the right shoulder seam, pick up and knit 58 (58, 64, 70, 72, 72) sts along the back neck to the left shoulder seam. Continue picking up and knitting 68 (68, 74, 80, 82, 82) sts along the front neck. PM on right needle, and join sts to begin knitting in the round.

Round 1: *K1, p1; rep from * to end.

Rep Round 1 until turtleneck measures approximately 7" from pick-up round.

Next round: *K1, sl1 wyif; rep from * to end.

Next round: *Sl1 wyib, p1; rep from * to end.

Next round: *K1, sl1 wyif; rep from * to end.

Bind off all sts using the tubular method (SEE SPECIAL TECHNIQUES).

Seam the sleeve caps into the armholes, then seam sleeves together from cuff to underarm.

Finally seam together the side seams above the ribbing, leaving a 1" side vent.

Steam seams to relax them, or re-wet block entire piece, laying flat to dry.



FLEURI SPECIAL TECHNIQUES

Sloped Bind-off

1. Work the first BO rows at the garment edges as usual.
2. One row before the next BO row, work to the last st of the row, turn.
3. Sl the first st from the L needle purlwise, pass the un-worked st of the previous row over the slipped st (the first st is bound off). BO the remaining sts as usual.

Binding Off Over Cabled Fabrics

To prevent edge-flaring when BO over cabling, BO by k2tog out of every 4 sts over cables, as follows:

K1, *k2tog, pass previous stitch on R needle over st just worked, [k1, pass previous st on R needle over st just worked] twice; rep from * to end.

(The number of sts may vary, so cont as far as you can, and then BO normally when you have less than 4 sts.)

1x1 Tubular Bind Off

This is a method of binding off which uses Kitchener stitch to create a smooth edge.

Separate the K and P sts from each other onto 2 separate needles, i.e., *sl the next K st onto Needle 1 (Front), sl the next P st onto Needle 2 (Back); rep from * until all sts are separated, with the K sts all on the Front Needle and the P sts all on the Back Needle.

Proceed as for Kitchener Stitch (following), to BO the sts by grafting them together.

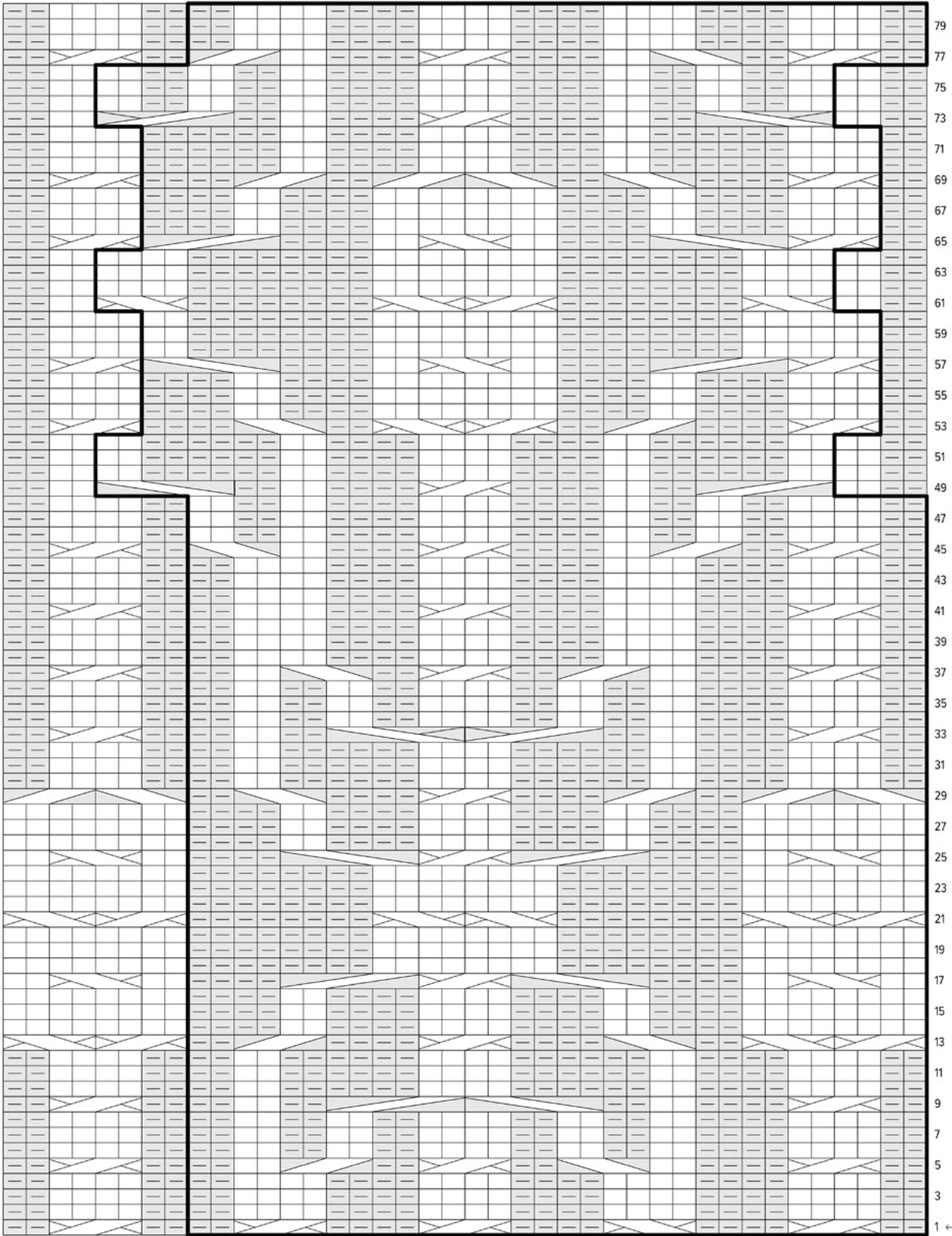
Kitchener Stitch (Grafting)

Kitchener Stitch is used to sew live sts together in a way that mimics a row of knitting. Pieces to be joined are live on needles, with RS facing out and both needle tips pointing to the right. Use a length of yarn approximately 4 times the length of the finished seam, attached to the R edge of the Back knitted piece (use the yarn the piece was knitted with, or attach a new length of yarn). Thread the yarn onto a blunt tapestry needle and follow the instructions below, working from right to left (note that you will work into each st twice):

1. Insert tapestry needle into first st on Front Needle as if to P; pull yarn through, but do not sl this st from needle.
2. Insert tapestry needle into first st on Back Needle as if to K; pull yarn through, but do not sl this st from needle.
3. Insert tapestry needle into first st on Front Needle as if to K, slipping this st off the needle. Insert tapestry needle into next st on Front Needle as if to P and pull yarn through this stitch, tugging it gently.
4. Insert tapestry needle into first st on Back Needle as if to P, slipping this st off the needle. Insert tapestry needle into next st on Back Needle as if to K and pull yarn through this st, tugging it gently.

Rep steps 3 and 4 until a single st remains on each needle, adjusting the tension of the sewing yarn every few sts so that it mimics the tension of the knitting. To finish, insert tapestry needle into final st on Front Needle as if to K, sl it off of needle. Now, insert tapestry needle into final st on Back Needle as if to P, sl it off of needle. Pull the yarn through and fasten off gently so as not to distort the sts.

FLEURI CHART



FLEURI LEGEND



Knit: On RS, knit stitch; on WS, purl stitch.



Purl: On RS, purl stitch; on WS, knit stitch.



2/2 LC: Slip 2 stitches to CN and hold in front. Knit 2 stitches from L needle. Knit 2 stitches from CN.



2/2 RC: Slip 2 stitches to CN and hold in back. Knit 2 stitches from L needle. Knit 2 stitches from CN.



2/2 LT: Slip 2 stitches to CN and hold in front. Purl 2 stitches from L needle. Knit 2 stitches from CN.



2/2 RT: Slip 2 stitches to CN and hold in back. Knit 2 stitches from L needle. Purl 2 stitches from CN.



2/4 LT: Slip 2 stitches to CN and hold in front. Purl 4 stitches from L needle. Knit stitches from CN.



2/4 RT: Slip 4 stitches to CN and hold in back. Knit 2 stitches from L needle. Purl 4 stitches from CN.



2/2/2 RCP: Slip 4 stitches to CN and hold in back. Knit 2 stitches from L needle. Purl 2, knit 2 stitches from CN.



2/2/2 LCP: Slip 2 stitches to CN and hold in front. Knit 2, purl 2 stitches from L needle. Knit 2 stitches from CN.

FLEURI CHART *(written instructions)*

Row 1 (RS): *P2, 2/2 RC, p4, 2/2 LC, p4, 2/2 RC, p4, 2/2 RC, p2; rep from * to last 8 sts, p2, 2/2 RC, p2.

Row 2 (WS): K2, p4, k2, *k2, [p4, k4] three times, p4, k2; rep from * to end.

Row 3: *P2, [k4, p4] three times, k4, p2; rep from * to last 8 sts, p2, k4, p2.

Row 4: as for Row 2.

Row 5: *P2, 2/2 RC, p4, k2, 2/2 LT, p2, 2/2 RC, p2, 2/2 RT, k2, p2; rep from * to last 8 sts, p2, 2/2 RC, p2.

Row 6: K2, p4, k2, *k2, [p2, k2] two times, p4, [k2, p2] two times, k4, p4, k2; rep from * to end.

Row 7: *P2, k4, p4, [k2, p2] two times, k4, [p2, k2] two times, p2; rep from * to last 8 sts, p2, k4, p2.

Row 8: as for Row 6.

Row 9: *P2, 2/2 RC, p4, k2, p2, 2/4 LT, 2/4 RT, p2, k2, p2; rep from * to last 8 sts, p2, 2/2 RC, p2.

Row 10: K2, p4, k2, *k2, p2, k6, p4, k6, p2, k4, p4, k2; rep from * to end.

Row 11: *P2, k4, p4, k2, p6, k4, p6, k2, p2; rep from * to last 8 sts, p2, k4, p2.

Row 12: as for Row 10.

Row 13: *2/2 RC, 2/2 LC, p2, 2/2 LT, p4, 2/2 RC, p4, 2/2 RT, p2; rep from * to last 8 sts, 2/2 RC, 2/2 LC.

Row 14: P8, *k4, p2, k4, p4, k4, p2, k4, p8; rep from * to end.

Row 15: *K8, p4, k2, p4, k4, p4, k2, p4, rep from * to last 8 sts, k8.

Row 16: as for Row 14.

Row 17: *K2, 2/2 LC, k2, p4, 2/4 LT, 2/2 RC, 2/4 RT, p4, rep from * to last 8 sts, k2, 2/2 LC, k2.

Row 18: P8, *k8, p8; rep from * to end.

Row 19: *K8, p8 rep from * to last 8 sts, k8.

Row 20: as for Row 18.

Row 21: *2/2 RC, 2/2 LC, p8, [2/2 LC] two times, p8; rep from * to last 8 sts, 2/2 RC, 2/2 LC.

Row 22: as for Row 18.

Row 23: as for Row 19.

Row 24: as for Row 18.

Row 25: *K2, 2/2 LC, k2, p4, 2/4 RT, 2/2 RC, 2/4 LT, p4; rep from * to last 8 sts; k2, 2/2 LC, k2.

Row 26: P8, *k4, p2, k4, p4, k4, p2, k4, p8; rep from * to end.

Row 27: as for Row 15.

Row 28: as for Row 26.

Row 29: *2/2 LT, 2/2 RT, p2, 2/2 RT, p4, 2/2 RC, p4, 2/2 LT, p2; rep from * to last 8 sts, 2/2 LT, 2/2 RT.

Row 30: K2, p4, k2, *k2, p2, k6, p4, k6, p2, k4, p4, k2; rep from * to end.

Row 31: *P2, k4, p4, k2, p6, k4, p6, k2, p2; rep from * to last 8 sts, p2, k4, p2.

Row 32: as for Row 30.

Row 33: *P2, 2/2 RC, p4, k2, p2, 2/2/2 RCP, 2/2/2 LCP, p2, k2, p2; rep from * to last 8 sts, p2, 2/2 RC, p2.

Row 34: K2, p4, k2, *[k2, p2] two times, k2, p4, [k2, p2] two times, k4, p4, k2, rep from * to end.

Row 35: as for Row 7.

Row 36: as for Row 6.

Row 37: *P2, 2/2 RC, p4, k2, 2/2 RT, p2, 2/2 RC, p2, 2/2 LT, k2, p2; rep from * to last 8 sts, p2, 2/2 RC, p2.

Row 38: K2, p4, k2, *k2, [p4, k4] three times, p4, k2; rep from * to end.

Row 39: *P2, [k4, p4] three times, k4, p2; rep from * to last 8 sts, p2, k4, p2.

Row 40: as for Row 38.

Row 41: *P2, 2/2 RC, p4, k4, p4, 2/2 RC, p4, k4, p2; rep from * to last 8 sts, p2, 2/2 RC, p2.

Row 42: as for Row 38.

Row 43: as for Row 39.

Row 44: as for Row 38.

Row 45: *P2, 2/2 RC, p2, 2/2 RT, k2, p4, 2/2 RC, p4, k2, 2/2 LT; rep from * to last 8 sts, p2, 2/2 RC, p2.

Row 46: K2, p4, k2, *p2, k2, p2, k4, p4, k4, p2, k2, p2, k2, p4, k2; rep from * to end.

Row 47: *P2, k4, [p2, k2] two times, p4, k4, p4, k2, p2, k2; rep from * to last 8 sts, p2, k4, p2.

Row 48: As for Row 46.

Row 49: P2, k2, *2/4 RT, p2, k2, p4, 2/2 RC, p4, k2, p2, 2/4 LT; rep from * to last 4 sts, k2, p2.

Row 50: K2, p2, *p2, k6, p2, k4, p4, k4, p2, k6, p2; rep from * to last 4 sts, p2, k2.

Row 51: P2, k2, *k2, p6, k2, p4, k4, p4, k2, p6, k2; rep from * to last 4 sts, k2, p2.

Row 52: as for Row 50.

Row 53: P2, *2/2 RC, p4, 2/2 RT, p2, 2/2 RC, 2/2 LC, p2, 2/2 LT, p4, rep from * to last 6 sts, 2/2 RC, p2.

Row 54: K2, p4, *k4, p2, k4, p8, k4, p2, k4, p4, rep from * to last 2 sts, k2.

Row 55: P2, *k4, p4, k2, p4, k8, p4, k2, p4; rep from * to last 6 sts, k4, p2.

Row 56: as for Row 54.

Row 57: P2, *2/2 RC, 2/4 RT, p4, k2, 2/2 LC, k2, p4, 2/4 LT; rep from * to last 6 sts, 2/2 RC, p2.

Row 58: K2, p4, *p2, k8, p8, k8, p6; rep from * to last 2 sts, k2.

Row 59: P2, *k6, p8, k8, p8, k2; rep from * to last 6 sts, k4, p2.

Row 60: as for Row 58.

Row 61: P2, k2, *2/2 LC, p8, 2/2 RC, 2/2 LC, p8, 2/2 LC; rep from * to last 4 sts, k2, p2.

Row 62: K2, p2, *p4, k8, p8, k8, p4; rep from * to last 4 sts, p2, k2.

Row 63: P2, k2, *k4, p8, k8, p8, k4; rep from * to last 4 sts, k2, p2.

Row 64: as for Row 62.

Row 65: P2, *2/2 RC, 2/4 LT, p4, k2, 2/2 LC, k2, p4, 2/2 RT; rep from * to last 6 sts, 2/2 RC, p2.

Row 66: K2, p4, *k4, p2, k4, p8, k4, p2, k4, p4; rep from * to last 2 sts, k2.

Row 67: P2, *k4, p4, k2, p4, k8, p4, k2, p4; rep from * to end, k4, p2.

Row 68: as for Row 66.

Row 69: P2, *2/2 RC, p4, 2/2 LT, p2, 2/2 LT, 2/2 RT, p2, 2/2 RT, p4, rep from * to last 6 sts, 2/2 RC, p2.

Row 70: K2, p4, *k6, p2, k4, p4, k4, p2, k6, p4; rep from * to last 2 sts, k2.

Row 71: P2, *k4, p6, k2, p4, k4, p4, k2, p6; rep from * to last 6 sts, k4, p2.

Row 72: as for Row 70.

Row 73: P2, k2, *2/2/2 LCP, p2, k2, p4, 2/2 RC, p4, k2, p2, 2/2/2 RCP; rep from * to last 4 sts, k2, p2.

Row 74: K2, p2, *[p2, k2] two times, p2, k4, p4, k4, [p2, k2] two times, p2, rep from * to last 4 sts, p2, k2.

Row 75: P2, k2, *[k2, p2] two times, k2, p4, k4, p4, [k2, p2] two times, k2; rep from * to last 4 sts, k2, p2.

Row 76: as for Row 74.

Row 77: *P2, 2/2 RC, p2, 2/2 LT, k2, p4, 2/2 RC, p4, k2, 2/2 RT, rep from * to last 8 sts, p2, 2/2 RC, p2.

Row 78: K2, p4, k2, *k2, [p4, k4] three times, p4, k2; rep from * to end.

Row 79: *P2, [k4, p4] three times, k4, p2; rep from * to last 8 sts, p2, k4, p2.

Row 80: as for Row 78.

