

Drift Jacket

ponis





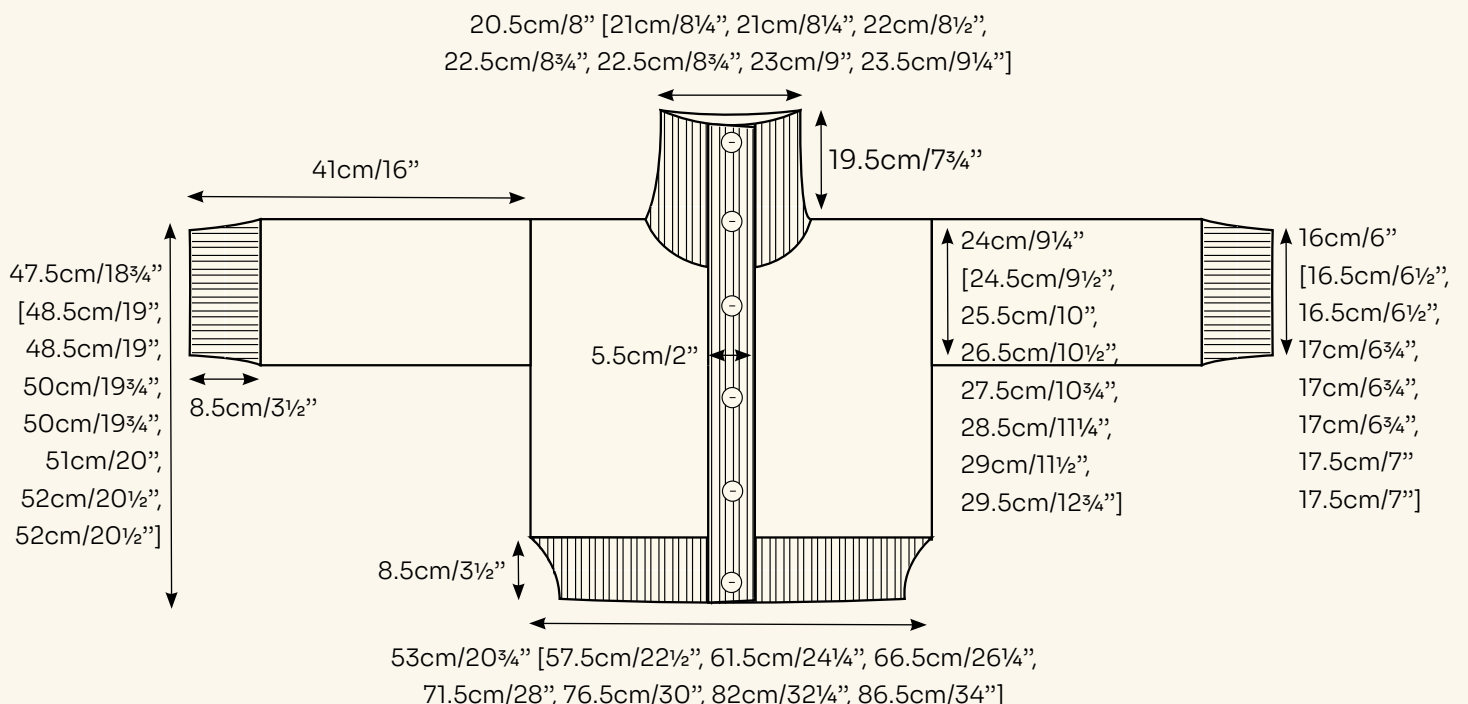
SIZING

This pattern includes 8 sizes, please use the table below to pick your size. When the instructions differ between sizes, they will be written as follows: size 1 [size 2, size 3, size 4, size 5, size 6, size 7, size 8].

SIZE	TO FIT CHEST	UK	US	S-M-L
1	71-76cm/28-30"	2-4	0-1	XS
2	81-86 cm/32-34"	6-8	2-4	S
3	91-97cm/36-38"	10-12	6-8	M
4	102-107cm/40-42"	14-16	10-12	L
5	112-117cm/44-46"	18-20	14-16	XL/1X
6	122-127cm/48-50"	22-24	18-20	2X
7	132-137cm/52-54"	26-28	22-24	3X
8	142-147cm/56-58"	30-32	26-28	4X

MEASUREMENTS

Flat measurements (after blocking): The jacket is designed with an oversized fit, if you are inbetween sizes we suggest you go down a size. If you are unsure which of the above sizes to pick, try measuring the chest width of a garment you like the fit of and see which is closest to the measurements below.



INFORMATION

The Drift Jacket combines an oversized cropped shape with chunky cables to create an extra warm and cosy winter knit. The high-ribbed neck can be folded down as a collar or buttoned for extra warmth around the neck.

SKILL LEVEL: Intermediate.

Required techniques: Long tail cast on, knit, purl, 1x1 rib stitch, slip stitch, increasing, decreasing, cabling, using a cable needle, reading charts, cast off, cast off in ribbing, picking up stitches and invisible seaming. For help with techniques see useful links on page 12.

YARN: 1 strand of any Bulky weight yarn (approx 100m/110yds per 100g skein, standard tension 11-13sts x 14-17 rows, needle 7-8mm). I have used:

11 [12, 13, 14, 15, 16, 17, 18] balls of Drops Andes, shown in colour 5610, brown. - 65% Wool, 35% Alpaca. (90m/98yds per 100g skein.)
or

19 [20, 21, 23, 24, 26, 28, 30] balls of Fonty Pole, shown in colour 404, light camel - 70% Merino Wool, 30% Alpaca. (50m/56yds per 50g skein.)
or

10 [10, 11, 12, 13, 14, 15, 16] balls of Wool and the Gang Alpachino Merino - 60% Merino Wool, 40% Baby Alpaca. (100m/110yds per 100g skein.)

RECOMMENDED NEEDLES:

5mm/US 8 knitting needles (suggest working flat using circular needles, length: 60cm/24")

8mm/US 11 knitting needles + cable needle

TENSION (after blocking):

Irregular cable on 8mm/US 11 needles:
10cm/4" x 10cm/4" = 16 stitches x 16 rows

1x1 rib stitch on 5mm/US 8 needles:
10cm/4" x 10cm/4" = 22 stitches x 22 rows

EXTRA TOOLS: 6 x 2.5cm/1" buttons, tape measure, scissors, a blunt tapestry needle to seam/weave in ends and a sharp needle for buttons. Stitch markers and a stitch holder would be useful, but you can also use scrap pieces of yarn.

ABBREVIATIONS

k - knit

p - purl

st(s) - stitch(es)

ws - wrong side

rs - right side

m1 - make 1 stitch, by picking up the horizontal strand before the next stitch and knitting into the back of it

m1p - make 1 stitch, by picking up the horizontal strand before the next stitch and purling into the back of it

k2tog - decrease 1 stitch by knitting 2 stitches together

ssk - decrease 1 stitch by slipping the next two stitches knit-wise, one by one. Put left needle through the front loops of both slipped stitches and knit them together

p2tog - decrease 1 stitch by purling 2 stitches together

p2tog tbl - decrease 1 stitch by inserting the right needle purl-wise into the next 2 stitches on the left needle through the back loops, starting with the furthest away stitch. Purl together to make 1 stitch

sl1k - slip 1 stitch knit-wise

sl1p - slip 1 stitch purl-wise

OVERVIEW: The Drift Jacket is worked flat in 5 pieces: back, right front, left front, right sleeve and left sleeve. Each piece starts with a 1x1 rib stitch then switches to the cable pattern. When 5 pieces are complete, front trims are joined and shoulder seams are sewn together, the neckline 1x1 rib is then picked up and knitted. Finally the sleeves are sewn to the body and buttons are attached.

INSTRUCTIONS

Please refer to the charts in the second pdf file when referenced in the instructions. All left and right instructions in the pattern are written as if you are looking at your knitting.

BACK

1. Cast on 61 [65, 71, 75, 81, 87, 93, 97]sts using 5mm/US 8 needles and the long tail cast on technique.
2. (WS) *p1, k1* repeat section in stars (*) until 1st left of row, p1.
3. *K1, p1* repeat section in stars (*) until 1st left of row, k1.
4. Repeat steps 2 and 3 until your piece measures 8.5cm/3½” from cast on edge (approx 17 more rows). Make sure the last row worked is a ws row.

Now change to 8mm/US 11 needles.

SIZE 1 ONLY:

5. (RS) P3, *k1, m1, k1, p1, m1p, p1, k1, m1, k2, m1, k1, p1, m1p, p1, k1, m1, k1, p1, m1p, p1* repeat section in stars (*) twice more. K1, m1, k1, p1, m1p, p1, k1, m1, k2, m1, k1, p1, m1p, p1, k3, p3. (87sts.) Skip to step 16.

SIZE 2 ONLY:

6. (RS) P3, m1p, p1, *m1, k2, m1p, p2, m1, k2, m1, k2, m1p, p2, m1, k2, m1p, p3* repeat section in stars (*) a further 3 times, p1. (94sts.) Skip to step 16.

SIZE 3 ONLY:

7. (RS) P3, m1p, *p1, m1, k2, m1p, p2, m1, k2, m1, k2, m1p, p2, m1, k2, m1p, p4* repeat section in stars (*) a further 3 times. (100sts.)
8. K5, *p3, k3, p6, k3, p3, k6,* repeat section in stars (*) twice more. P3, k3, p6, k3, p3, k5.
9. P5, *k3, p3, k6, p3, k3, p6* repeat section in stars (*) twice more. K3, p3, k6, p3, k3, p5.
10. Repeat step 8 once more. Skip to step 19.

SIZE 4 ONLY:

11. P3, k3, *m1p, p2, m1, k2, m1, k2, m1p, p2, m1,

k2, m1p, p2, m1, k2* repeat section in stars (*) a further 3 times. M1p, p2, m1, k2, m1, k2, m1p, p2, m1, k2, p3. (108sts.) Skip to step 16.

SIZE 5 ONLY:

12. (RS) P5, *m1, k2, m1p, p2, m1, k2, m1, k2, m1p, p2, m1, k2, m1p, p3* repeat section in stars (*) a further 4 times, p1. (116sts.) Skip to step 16.

SIZE 6 ONLY:

13. (RS) P2, m1p, p4, *m1, k2, m1p, p2, m1, k2, m1, k2, m1p, p2, m1, k2, m1p, p4* repeat section in stars (*) a further 4 times, m1p, p1. (124sts.) Skip to step 16.

SIZE 7 ONLY:

14. (RS) P5, *m1, k2, m1p, p2, m1, k2, m1, k2, m1p, p2, m1, k2, m1p, p2* repeat section in stars (*) a further 4 times. M1, k2, m1p, p2, m1, k2, m1, k2, m1p, p2, k3, p5. (133sts.) Skip to step 16.

SIZE 8 ONLY:

15. (RS) P2, m1p, p3, *m1, k2, m1p, p2, m1, k2, m1, k2, m1p, p2, m1, k2, m1p, p3* repeat section in stars (*) a further 5 times, p2. (140sts.)

SIZES 1, 2, 4, 5, 6, 7 AND 8 ONLY:

16. (WS) K0[k1, k0, k1, k2, k2, k2], *k3[k4, k3, k4, k5, k3, k4], p3, k3, p6, k3, p3* repeat section in stars (*) a further 3[3, 4, 4, 4, 5, 5] times, k3[k5, k3, k5, k7, k5, k6].
17. P0[p1, p0, p1, p2, p2, p2], *p3[p4, p3, p4, p5, p3, p4], k3, p3, k6, p3, k3* repeat section in stars (*) a further 3[3, 4, 4, 4, 5, 5] times, p3[p5, p3, p5, p7, p5, p6].
18. Repeat step 16 once more.

ALL SIZES:

19. Starting with row 1 (rs row), follow the back chart until you finish row 36 of the chart. See separate pdf for all charts. **Make sure you**

follow the correct chart for your size.

20. Repeat row 1-16[18, 18, 20, 20, 22, 24, 24] of the back chart.
21. Starting with row 1 (rs row), follow the right back neck chart until you finish row 6 of the chart. (57 [63, 69, 75, 83, 91, 99, 105]sts in two sections.)
22. Cast off 28 [31, 34, 37, 41, 45, 49, 52]sts.
23. RS facing outwards, rejoin yarn to the 29 [32, 35, 38, 42, 46, 50, 53]sts waiting on the left needle. Starting with row 1 (rs row) follow the left back neck chart until you finish row 2 of the chart.
24. Cast off 28 [31, 34, 37, 41, 45, 49, 52]sts.

RIGHT FRONT:

1. Cast on 42 [44, 46, 50, 52, 56, 58, 60]sts using 5mm/US 8 needles and the long tail cast on technique.
2. (WS) sl1p *k1, p1* repeat section in stars (*) until 1st left of row, k1.
3. *P1, k1* repeat section in stars (*) until end of row.
4. Repeat steps 2 and 3 until your piece measures 8.5cm/3½" from cast on edge (approx 17 more rows). Make sure the last row worked is a ws row.

Now change to 8mm/US 11 needles.

SIZE 1 ONLY:

5. (RS) P1, *m1, k2, m1p, p2, m1, k2, m1, k2, m1p, p2, m1, k2* m1p, p2, repeat section in stars (*) once more, k1. Slip the last 14sts onto a st holder or scrap piece of yarn. Turn work. (41sts.)
6. P4, *k3, p6, k3, p3* k3, p3, repeat section in stars (*) once more, k1.
7. P1, *k3, p3, k6, p3, k3* p3, repeat section in stars (*) once more, k1.

8. Repeat step 6 once more. Skip to step 22.

SIZE 2 ONLY:

9. (RS) P1, *m1, k2, m1p, p2, m1, k2, m1, k2, m1p, p2, m1, k2, m1p, p2* repeat section in stars (*) once more, p1. Slip the last 14sts onto a st holder or scrap piece of yarn. Turn work. (44sts.) Skip to step 19.

SIZE 3 ONLY:

10. (RS) P1, *m1p, p2, m1, k2, m1p, p2, m1, k2, m1, k2, m1p, p2, m1, k2* repeat section in stars (*) once more, m1p, p3. Slip the last 14sts onto a st holder or scrap piece of yarn. Turn work. (47sts.) Skip to step 19.

SIZE 4 ONLY:

11. (RS) P1, *p2, m1p, p2, m1, k2, m1p, p2, m1, k2, m1, k2, m1p, p2, m1, k2* repeat section in stars (*) once more, m1p, p3. Slip the last 14sts onto a st holder or scrap piece of yarn. Turn work. (51sts.) Skip to step 19.

SIZE 5 ONLY:

12. (RS) P1, *m1p, p3, m1p, p2, m1, k2, m1p, p2, m1, k2, m1, k2, m1p, p2, m1, k2* repeat section in stars (*) once more, m1p, p3. Slip the last 14sts onto a st holder or scrap piece of yarn. Turn work. (55sts.) Skip to step 19.

SIZE 6 ONLY:

13. (RS) P1, *m1, k2, m1p, p2, m1, k2, m1, k2, m1p, p2, m1, k2, p2* repeat section in stars (*) once more. M1, k2, m1p, p2, m1, k2, m1, k2, m1p, p2, m1, k3. Slip the last 14sts onto a st holder or scrap piece of yarn. Turn work. (60sts.)

14. P4, *k3, p6, k3, p3, k2, p3* repeat section in stars (*) once more, k3, p6, k3, p3, k1.

15. P1, k3, *p3, k6, p3, k3, p2, k3* repeat section in stars (*) once more, p3, k6, p3, k4.

16. Repeat step 14 once more. Skip to step 22.

SIZE 7 ONLY:

17. (RS) P1, *m1, k2, m1p, p2, m1, k2, m1, k2, m1p, p2, m1, k2, m1p, p2* repeat section in stars

(*) once more. M1, k2, m1p, p2, m1, k2, m1, k2, m1p, p2, m1, k2, p3. Slip the last 14sts onto a st holder or scrap piece of yarn. Turn work. (64sts.) Skip to step 19.

SIZE 8 ONLY:

18. (RS) P1, *m1, k2, m1p, p2, m1, k2, m1, k2, m1p, p2, m1, k2, m1p, p3* repeat section in stars (*) once more. M1, k2, m1p, p2, m1, k2, m1, k2, m1p, p2, m1, k2, m1p, p2, m1p, p1. Slip the last 14sts onto a st holder or scrap piece of yarn. Turn work. (68sts.)

SIZES 2, 3, 4, 5, 7 AND 8 ONLY:

19. (WS) [K1, k1, k1, k1, k0, k2], *k3, p3, k3, p6, k3, p3, [k0, k0, k2, k4, k0, k1]* repeat section in stars (*) a further [1, 1, 1, 1, 2, 2] times, [k1, k4, k4, k4, k1, k0].
20. [P1, p4, p6, p8, p1, p1], *k3, p3, k6, p3, k3, [p3, p3, p3, p3, p4]* [p0, p0, p2, p4, p0, p0], repeat section in stars (*) a further [1, 1, 1, 1, 2, 2] times, [p1, p1, p1, p1, p0, p1].

21. Repeat step 19 once more.

ALL SIZES:

22. Starting with row 1 (rs row), follow the right front chart until you finish row 58 [60, 60, 62, 62, 64, 66, 66] of the chart.
23. Cast off.
24. RS facing outwards, slip the 14sts held on the st holder onto 5mm/US 8 needles, slipping the sts from right to left onto the needle.
25. (RS) Rejoin yarn to the 14sts. *P1, k1* repeat section in stars (*) until end of row.
26. S11p *k1, p1* repeat section in stars (*) until 1st left of row, k1.
27. Repeat steps 25 and 26 until your piece measures 38.5cm/15" [39.5cm/15½", 39.5cm/15½", 40.5cm/16", 40.5cm/16", 39.5cm/15½", 40.5cm/16", 40.5cm/16"] from cast on edge (approx 64[66, 66, 68, 68, 66, 68, 68] more rows. 85[87, 87, 89, 89, 87, 89, 89] rows in total including hem). Make sure

the last row worked is a ws row.

28. Instead of casting off, place sts onto a st holder or scrap piece of yarn.

LEFT FRONT:

1. Cast on 42 [44, 46, 50, 52, 56, 58, 60]sts using 5mm/US 8 needles and the long tail cast on technique.
2. (WS) *k1, p1* repeat section in stars (*) until end of row.
3. S11k, *p1, k1* repeat section in stars (*) until 1st left of row, p1.
4. Repeat step 2 once more.
5. S11k, p1, k1, p1, k1, p1, k1, turn your work. You will now be working across these 7sts only to form the first buttonhole, you will come back to the other sts later.
6. S11p, k1, p1, k1, p1, k1, p1.
7. S11k, p1, k1, p1, k1, p1, k1.
8. Repeat steps 6 and 7 once more. Cut your yarn leaving 15cm/6" yarn tail.
9. RS facing outwards, re-join yarn to the 35 [37, 39, 43, 45, 49, 51, 53] sts on your left needle, you will now be working across these sts only.
10. S11p, *k1, p1* repeat section in stars (*) until end of row.
11. *K1, p1* repeat section in stars (*) until 1st left of row, k1.
12. Repeat steps 10 and 11 once more.
13. Repeat step 10 once more.
14. Working back across all 42 [44, 46, 50, 52, 56, 58, 60]sts on your needle, repeat steps 2 and 3 until your piece measures 8.5cm/3½" from cast on edge (approx 11 more rows). Make sure the last row worked is a ws row.
15. Cut your yarn leaving 15cm/6" yarn tail, slip

the first 14sts onto a st holder or scrap piece of yarn. RS facing outwards, rejoin yarn to 28 [30, 32, 36, 38, 42, 44, 46]sts on needle.

Now change to 8mm/US 11 needles.

SIZE 1 ONLY:

16. K1, *k2, m1, p2, m1p, k2, m1, k2, m1, p2, m1p, k2, m1* p2, m1p, repeat section in stars (*) once more, p1. (41sts)
17. K1, *p3, k3, p6, k3, p3*, k3, repeat section in stars (*) once more, p1.
18. K1, *k3, p3, k6, p3, k3* p3, repeat section in stars (*) once more, p1.
19. Repeat step 17 once more. Skip to step 36.

SIZE 2 ONLY:

20. P1, *m1p, p2, m1, k2, m1p, p2, m1, k2, m1, k2, m1p, p2, m1, k2* repeat section in stars (*) once more, p1. (44sts.) Skip to step 30.

SIZE 3 ONLY:

21. P1, *m1p, p2, m1, k2, m1p, p2, m1, k2, m1, k2, m1p, p2, m1, k2* repeat section in stars (*) once more, m1p, p3. (47sts.) Skip to step 30.

SIZE 4 ONLY:

22. P2, m1p, p1, *m1, k2, m1p, p2, m1, k2, m1, k2, m1p, p2, m1, k2, m1p, p4* repeat section in stars (*) once more, p1. (51sts.) Skip to step 30.

SIZE 5 ONLY:

23. P2, m1p, p1, *m1, k2, m1p, p2, m1, k2, m1, k2, m1p, p2, m1, k2, m1p, p2, m1p, p3* repeat section in stars (*) once more, p1. (55sts.) Skip to step 30.

SIZE 6 ONLY:

24. K1, *m1, k2, m1p, p2, m1, k2, m1, k2, m1p, p2, m1, k2, p2* repeat section in stars (*) once more. M1, k2, m1p, p2, m1, k2, m1, k2, m1p, p2, m1, k2, p1. (60sts.)
25. K1, *p3, k3, p6, k3, p3, k2* repeat section in stars (*) once more, p3, k3, p6, k3, p4.

26. K1, *k3, p3, k6, p3, k3, p2* repeat section in stars (*) once more, k3, p3, k6, p3, k3, p1.

27. Repeat step 25 once more. Skip to step 36.

SIZE 7 ONLY:

28. *P2, m1p, k2, m1, p2, m1p, k2, m1, k2, m1, p2, m1p, k2, m1* repeat section in stars (*) once more. P3, m1, k2, m1p, p2, m1, k2, m1, k2, m1p, p2, m1, k2, p1 (64sts.) Skip to step 33.

SIZE 8 ONLY:

29. P1, m1p, *p2, m1p, k2, m1, p2, m1p, k2, m1, k2, m1, p2, m1p, k2, m1, p1* repeat section in stars (*) twice more. (68sts.) Skip to step 33.

SIZES 2, 3, 4, AND 5 ONLY:

30. [K1, k4, k6, k8], *p3, k3, p6, k3, p3*, [k3, k3, k5, k7], repeat section in stars (*) once more, k4.
31. P1, *p3, k3, p3, k6, p3, k3*, [p0, p0, p2, p4], repeat section in stars (*) once more, [p1, p4, p6, p8].

32. Repeat step 30 once more. Skip to step 36.

SIZES 7 AND 8 ONLY:

33. K1, *p3, k3, p6, k3, p3, [k3, k4]* repeat section in stars (*) twice more, [k0, k1].
34. [P0, p1], *[p3, p4], k3, p3, k6, p3, k3* repeat section in stars (*) twice more, p1.

35. Repeat step 33 once more.

ALL SIZES:

36. Starting with row 1 (rs row), follow the left front chart until you finish row 58 [60, 60, 62, 62, 64, 66, 66] of the chart.
37. Cast off.
38. RS facing outwards, slip the 14sts held on the left front st holder onto 5mm/US 8 needles, slipping the sts from right to left onto the needle. Rejoin yarn to 14sts.
39. (RS) sl1k, *p1, k1* repeat section in stars (*) until 1st left of row, p1.
40. *K1, p1* repeat section in stars (*) until end

of row.

41. Repeat steps 39 and 40 a further 3 times. (6 more rows.)
42. Sl1k, p1, k1, p1, k1, p1, k1, turn your work. You will now be working across these 7sts only, you will come back to the other sts later.
43. Sl1p, k1, p1, k1, p1, k1, p1.
44. Sl1k, p1, k1, p1, k1, p1, k1.
45. Repeat steps 43 and 44 once more. Cut your yarn leaving 15cm/6" yarn tail
46. RS facing outwards, re-join yarn to the 7sts on your left needle, you will now be working across these 7sts only.
47. Sl1p, k1, p1, k1, p1, k1, p1.
48. K1, p1, k1, p1, k1, p1, k1.
49. Repeat steps 47 and 48 once more.
50. Repeat step 47 once more.
51. Working back across all 14sts on your needle, (WS) *k1, p1* repeat section in stars (*) until end of row.
52. Sl1k, *p1, k1* repeat section in stars (*) until 1st left of row, p1.
53. Repeat steps 51 and 52 until your piece measures 8.5cm/3½" from the top of the last button hole (17 more rows). Make sure last row is a WS row.
54. Repeat steps 42 to 53 once more.
55. Repeat steps 42 to 50 once more.
56. Repeat steps 51 and 52 until your piece measures 2.5cm/1" [3cm/1¼", 3cm/1¼", 4cm/1½", 4cm/1½", 3cm/1¼", 4cm/1½", 4cm/1½"] from the top of the last button hole (5 [7, 7, 9, 9, 7, 9, 9] more rows). Make sure last row is a WS row.
57. Place 14sts onto a st holder or scrap piece of yarn.

RIGHT SLEEVE:

1. Cast on 58 [60, 60, 62, 62, 62, 64, 64]sts using 5mm/US 8 needles and the long tail cast on technique.
2. (WS) *k1, p1* repeat section in stars (*) until end of row.
3. Repeat step 2 until your piece measures 8.5cm/3½" (approx 18 more rows). Make sure the last row worked is a ws row.

Now change to 8mm/US 11 needles.

SIZES 1 AND 2 ONLY:

4. (RS) p7[p8], m1p, p1, *k2, m1, p2, m1p, k2, m1, k2, m1, p2, m1p, k2, m1, p3* repeat section in stars (*) twice more. M1p, p5[p6]. (78[80]sts.) Skip to step 9.

SIZES 3 AND 4 ONLY:

5. (RS) [P5, p8] *m1p, [p2, p1], m1p, p1, m1, k2, m1p, p2, m1, k2, m1, k2, m1p, p2, m1, k2* repeat section in stars (*) twice more, [p10, p12]. ([84, 86]sts.) Skip to step 9.

SIZE 5 ONLY:

6. (RS) P3, m1p, p2 *m1p, p2, m1p, p2, m1, k2, m1p, p2, m1, k2, m1, k2, m1p, p2, m1, k2* repeat section in stars (*) twice more. M1p, p2, m1p, p2, m1p, p5. (90sts.) Skip to step 9.

SIZES 6 AND 7 ONLY:

7. (RS) [p2, p3], m1p, *p2, m1p, k2, m1, p2, m1p, k2, m1, k2, m1, p2, m1p, k2, m1* repeat section in stars (*) a further 3 times. P1, m1p, p1, m1p, [p2, p3]. ([93, 95]sts.) Skip to step 9.

SIZE 8 ONLY:

8. (RS) P2, *p1, m1p, p2, m1, k2, m1p, p2, m1, k2, m1, k2, m1p, p2, m1, k1, m1* repeat section in stars (*) a further 3 times, p6. (96sts.)

ALL SIZES:

9. K9[k10, k10, k12, k12, k6, k7, k6], *p3, k3, p6, k3, p3, k3[k3, k5, k4, k6, k3, k3, k4] * repeat section in stars (*) a further [2, 2, 2, 2, 2, 3, 3, 3] times. K6 [k7, k5, k8, k6, k3, k4, k2].

10. P9[p10, p10, p12, p12, p6, p7, p6], *k3, p3, k6, p3, k3, p3[p3, p5, p4, p6, p3, p3, p4]* repeat section in stars (*) a further [2, 2, 2, 2, 2, 3, 3, 3] times. [P6 [p7, p5, p8, p6, p3, p4, p2].
11. Repeat step 9 once more.
12. Starting with row 1 (rs row), follow the right sleeve chart until you finish row 36 of the chart.
13. Repeat row 1-12 of the right sleeve chart.
14. Cast off. It's useful to attach a marker at this point to your sleeve to remember which is the right sleeve.

LEFT SLEEVE:

1. Repeat steps 1 to 11 as for the right sleeve, only working the steps for your chosen size.
2. Starting with row 1 (rs row), follow the left sleeve chart until you finish row 36 of the chart.
3. Repeat row 1-12 of the left sleeve chart.
4. Cast off.

ASSEMBLY & FINISHING

Front Trim Seams:

The front rib trims now need to be joined to the fronts of the cardigan. RS facing outwards, use the vertical invisible seam technique to sew the left trim to the left front and the right trim to the right front. Start from the top of the hem and work upwards until you reach the live sts waiting on the st holders.

Shoulder Seams:

Place the front pieces on top of the back, with ws touching. Starting from the outside edges, use the horizontal invisible seam to sew the shoulder seams together.

Neckline 1x1 rib:

1. RS facing outwards, slip the 14sts held on the left front st holder onto 5mm/US 8 needles, slipping the sts from left to right onto the needle. Re-join yarn and pick up 18 [18, 18, 20, 20, 20, 22, 22]sts along the left front neckline until you reach the shoulder seam, then pick up 37[39, 39, 41, 41, 41, 41, 43]sts along the back neck until you reach the other shoulder seam. Pick up 18 [18, 18, 20, 20, 20, 22, 22]sts along the right front until you reach the 14sts on the right front st holder. Cut your yarn leaving 15cm/6" tail then slip the 14sts onto your needle, from left to right. Turn work and re-join yarn. (101 [103, 103, 109, 109, 109, 113, 115]sts.)
2. (WS) sl1p, *k1, p1* repeat section in stars (*) until end of row.
3. Sl1k, *p1, k1* repeat section in stars (*) until end of row
4. Repeat steps 2 and 3 until rib measures 6cm/2¼"[5cm/2", 5cm/2", 5cm/2", 5cm/2", 5cm/2", 5cm/2", 5cm/2"] from picking up the sts in step 1. (approx 11 [9, 9, 9, 9, 9, 9, 9] more rows). Make sure the last row worked is a ws row.
5. Sl1k, p1, k1, p1, k1, p1, k1, turn your work. You will now be working across these 7sts only,

you will come back to the other sts later.

6. S11p, k1, p1, k1, p1, k1, p1.
7. S11k, p1, k1, p1, k1, p1, k1.
8. Repeat steps 6 and 7 once more. Cut your yarn leaving 15cm/6" yarn tail. .
9. RS facing outwards, re-join yarn to the sts on your left needle, you will now be working accross these 94[96, 96, 102, 102, 102, 106, 108]sts only.
10. S11p, *k1, p1* repeat section in stars (*) until 1sts left of row, k1.
11. Repeat step 10 a further 4 times.
12. Working back across all 101 [103, 103, 109, 109, 109, 113, 115]sts on your needle, repeat steps 2 and 3 until your piece measures 8cm/3"[8.5cm/3½", 8.5cm/3½", 8.5cm/3½", 8.5cm/3½", 8.5cm/3½", 8.5cm/3½", 8.5cm/3½"] from the top of the last button hole (approx 17 [19, 19, 19, 19, 19, 19, 19]rows). Make sure last row is a WS row.
13. Repeat steps 5 to 11 once more.
14. Working back across all sts on your needle, Repeat steps 2 and 3 once more (2 more rows).
15. Repeat step 2 once more.
16. Cast off in ribbing

Armhole seams:

1. RS facing outwards, use a stitch marker or short piece of yarn to mark the centre of the right sleeve and match this with the right shoulder seam.
2. Measure 25cm/9¾" [25.5cm/10", 26.5cm/10½", 27.5cm/10¾", 28.5cm/11¼", 29.5cm/11½", 31cm/12", 32cm/12½"] down the sides of the front and back and place markers. Match these to the outer edges of the sleeve.
3. Use the perpendicular invisible seam

technique to sew the right sleeve to the right side of the body.

4. Repeat steps 1 to 3 to join the left sleeve to the left side of the body.

Side seams and sleeve seams:

RS facing outwards, starting at the hem use the vertical invisible seam to sew the sides of the front and back together, then continue and sew the sleeve seams together in the same way. Weave in any loose ends.

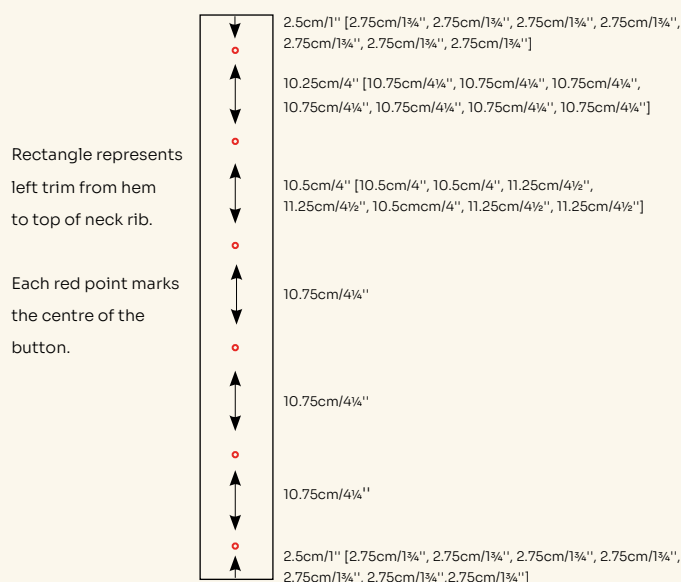
Blocking:

Depending what fibre you are using, you may want to block your jacket. Refer to the blocking instructions for the yarn you are using or follow the instructions below:

1. Fill a basin with cold water, submerge cardigan for 15 minutes.
2. Lift out of water, supporting weight evenly, gently squeeze to remove excess water.
3. Roll between clean towels to remove most of the moisture.
4. Place on a blocking mat or board.
5. Pin out to measurements.
6. Leave until completely dry.

Buttons:

Put front left trim on top of right trim and mark where button holes need to be, or sew buttons to the center of the front right trim as follows:



USEFUL LINKS

Knitting Techniques:

Long tail cast on: <https://www.youtube.com/watch?v=T-gdAUEjQjU>

Knit: <https://www.youtube.com/watch?v=esEtUaa-Pwg>

Purl: https://www.youtube.com/watch?v=bbtnjHrb_Hg

1x1 rib stitch: <https://www.youtube.com/watch?v=ykoeMeelluc>

S11k: <https://www.youtube.com/watch?v=Y1SwoXDoXFM>

S11p: <https://www.youtube.com/watch?v=UUQ9HqCpy4U>

M1: <https://www.youtube.com/watch?v=EtFm56tJ5Nk>

M1P: https://www.youtube.com/watch?v=r1lBu_3-lzM

Knitting cables: https://www.youtube.com/watch?v=A7_Huc7IArs

K2tog: <https://www.youtube.com/watch?v=YBjSEzf-Q5E>

Ssk: <https://www.youtube.com/watch?v=RKRzXWEIrhA&t=4s>

P2tog: <https://www.youtube.com/watch?v=9melw6FgzCM&t=4s>

P2tog tbl: <https://www.youtube.com/watch?v=gJjHaLU-MBU>

Cast off: <https://www.youtube.com/watch?v=F9b7KS9jaAo>

Cast off in ribbing: https://www.youtube.com/watch?v=TC_qvd0qmnk

Picking up sts: <https://www.youtube.com/watch?v=htAHtNnuE7Q>

Finishing Techniques:

Horizontal invisible seam: https://www.youtube.com/watch?v=Nhbm_ZsoOgE

Perpendicular invisible seam: <https://www.youtube.com/watch?v=GWqFIXGja-w>

Vertical invisible seam: <https://www.youtube.com/watch?v=PbgYNvkEZQM>

Weaving in loose ends: https://www.youtube.com/watch?v=ohtv2fyd_IY

Blocking: <https://brooklyntweed.com/pages/blocking-101>

Tag us on Instagram @rows_knitwear

©ROWSknitwear 2022.

This pattern may be printed and used for personal use only and along with the finished product must not be reproduced, sold or distributed. All text and images are the property of ROWSknitwear.