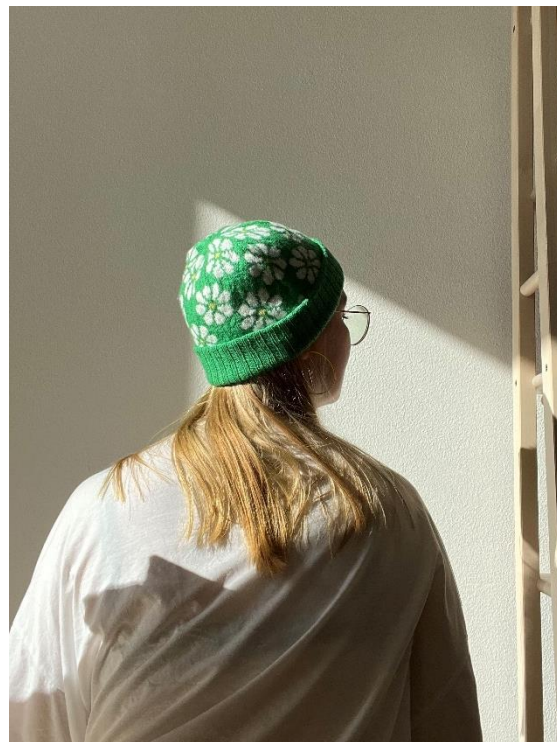


Sölvara

knitwear



Daisy Hat

The Daisy Hat is a classic beanie with a folded, ribbed brim. The hat is worked in a floral pattern using two colours, and the centres of the flowers are embroidered on at the end. The decreases towards the top are placed in between the flowers, to keep the pattern intact all the way to the top.

Difficulty:



Sizes:

XS (S) M (L)

Circumference:

43 (47) 51 (55) cm.

Fits head circumference:

approx. 47-50 (50-54) 54-58 (58-62) cm.

Suggested yarn:

Colour A: 50 (50-100) 50-100 (100) g Sunday by Sandnes Garn (235m/50g) **or** 50 (100) 100 (100) g Arwetta by Filcolana (210m/50g).

Colour B: 50 (50) 50 (50) g Sunday by Sandnes Garn (235m/50g) **or** 50 (50) 50 (50) g Arwetta by Filcolana (210m/50g).

Colour C: approx. 2 (3) 3 (4) g Sunday by Sandnes Garn (235m/50g) **or** approx. 2 (3) 3 (4) g Arwetta by Filcolana (210m/50g).

Gauge:

Stranded knitting: 42 (46) 42 (46) stitches x 42 (46) 42 (46) rounds on 2 (1.5) 2 (1.5) mm needles, or whichever needed to obtain gauge = 10 x 10 cm after washing and blocking.

2x2 ribbing: 34 (38) 34 (38) stitches on 2 (1.5) 2 (1.5) mm needles, or whichever needed to obtain gauge = 10 cm after washing and blocking.

NB: as the hat is worked in the round, it is very important that the swatches are also worked in the round.

Suggested needles:

2 (1.5) 2 (1.5) mm circular needles (40 cm), optionally 2 (1.5) 2 (1.5) mm dpns.

M1L: With the left needle, pick up the bar between two stitches from front to back, then knit through the back loop.

ssk: Slip one stitch as if to knit two times, move both stitches back onto the left needle, and knit them together through the back loop.

Hat:

Cast 140 (168) 168 (196) sts onto the 2 (1.5) 2 (1.5) mm circular needles (40 cm). Place a SM to indicate the BOR, and work 10 (11) 12 (13) cm of 2x2 ribbing (k 2, p 2) in the round.

On the next round, join the live sts with the cast-on edge like so:

With the left needle, pick up the first st from the cast-on edge and work it together with the first live st on the needle. Continue in this manner to the end of round, still in 2x2 ribbing.

Work an additional 2 (1) 1 (4) cm of 2x2 ribbing in the round.

Turn, and continue working from the “WS” – e.g. using German short-rows.

On the next round, increase like so:

k 2, M1L, k 4, M1L, *k 3, M1L, k 4, M1L*, repeat from * to * to the end of round (= 180 (216) 216 (252) sts).

Work 31 (49) 49 (49) rounds in stranded knitting following chart A on page 5, starting with round 19 (1) 1 (1).

Pay special attention to the chart at the beginning and end of round, as some of these sts differ from the pattern repeat to avoid a jog at the BOR.

Finish with round 13.

Decreases:

Work decreases following chart B on page 6 (= 60 (72) 72 (84) sts). Switch to dpns or magic loop along the way.

Continue decreasing like so, using colour A:

Round 1: k2tog to BOR (= 30 (36) 36 (42) sts).

Round 2: k all sts.

Round 3: k2tog to BOR (= 15 (18) 18 (21) sts).

Round 4: k all sts.

Round 5: k3tog to BOR (= 5 (6) 6 (7) sts).

Break the yarn and pull it through the remaining sts.

Finishing:

Add the centres of the flowers using duplicate stitch in colour C.

Weave in all ends.

Tip: block the hat over an upside-down bowl or a ball with a towel in between to get a perfectly round top.

Chart A

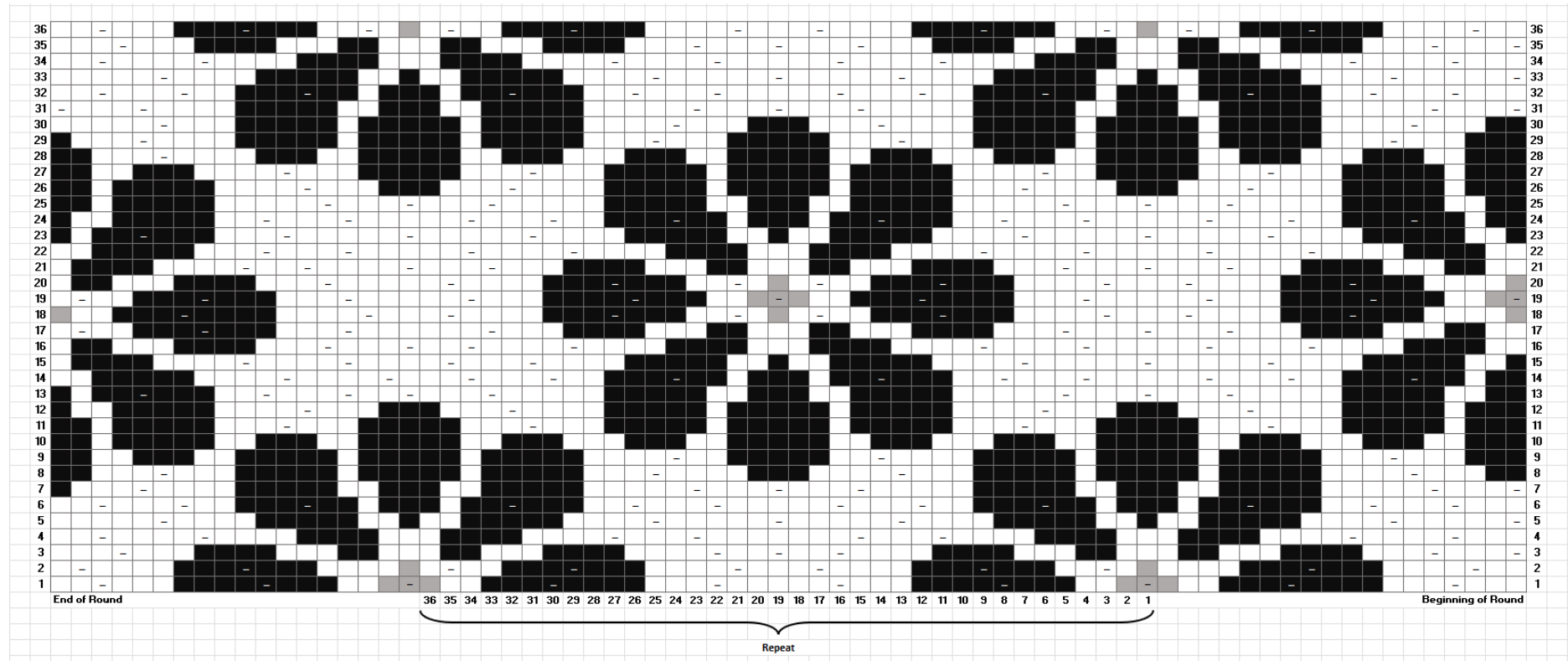
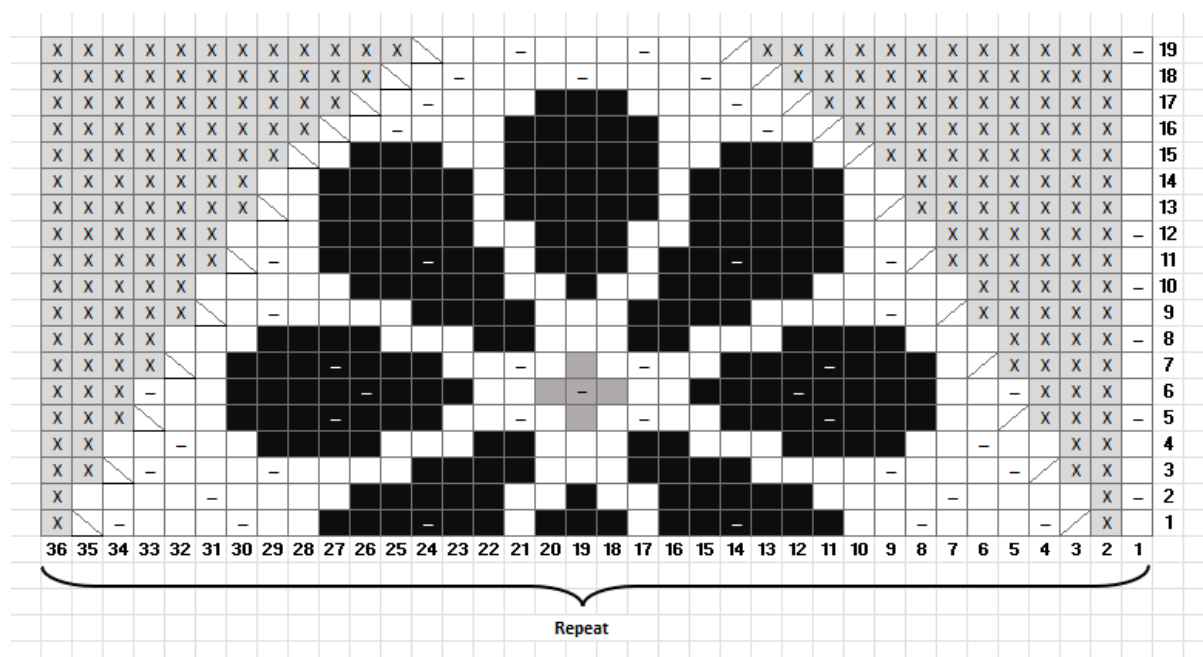


Chart B



	Colour A
	Colour B
	Colour C
	Lock
	k2tog
	ssk
	No st

Colour A: Dominant colour.

Colour B: Background colour.

Colour C: Work as colour A and add colour C later using duplicate stitch.

Lock: Lock the non-working yarn on the WS to avoid long floats.

k2tog: Knit 2 stitches together.

ssk: Slip, slip, knit.

No st: Skip this field.



This pattern is for private use only.

That means it must not be copied, resold, or shared with others.

Systematic sale of the design is not allowed.

Thank you for supporting Solvara Knitwear!

Please share your version of the Daisy Hat with #daisyhat and #solvaraknitwear