

Clapton

by Isabell Kraemer



Clapton © 2020

*a handknit design by Isabell Kraemer/grasflecken.
This pattern is for unlimited personal use. Do not
reproduce or sell the pattern, or sell items that
are knitted from this pattern.*

*For pattern support (in English), please contact
grasfleckenbylilalu@gmail.com*

Yarn

Yama Yarn Merino Linen Singles [394 yards (360 m)/100g]; *shown in colors Ursus (MC), Sandstone (CC1) and Dark Maple (CC2)*

approximately

MC: 1116 (1225, 1313, 1410, 1520)(1665, 1751, 1860, 2007) yds/ 1020 (1120, 1200, 1289, 1389)(1522, 1601, 1700, 1835) m

CC1: 38 (42, 45, 49, 54)(60, 60, 60, 60) yds/ 35 (38, 41, 45, 49)(55, 55, 55, 55) m

CC2: 46 (53, 59, 68, 74)(81, 83, 85, 88) yds/ 42 (48, 54, 62, 68)(74, 76, 78, 80) m

Needles

US 3 (3.25 mm) 16" (40 cm) and 32" (80 cm) circular needle and DPNs (or longer circular needle for magic loop) for neck CO, body and sleeve ribbing.

US 4 (3.5 mm) 16" (40 cm) and 32" (80 cm) circular needle and DPNs (or longer circular needle for magic loop) for body and sleeves.

Gauge

24 sts x 36 rows = 4" (10 cm) square in Stockinette stitch on larger needle after blocking.

Sizes

1 (2, 3, 4, 5)(6, 7, 8, 9)

finished bust circumference:

35.75 (39, 43, 46.25, 49.75)(53.75, 57, 61, 64.25)"

89 (97.5, 107.5, 116, 124)(134, 142.5, 152.5, 161) cm

Sample is worn with 4" (10 cm) positive ease at bust (see schematic on the last page for more detailed measurements).

Materials

Stitch holders or waste yarn, stitch markers, tapestry needle, blocking tools.

Special techniques and tips

German short rows:

http://www.youtube.com/watch?v=i_6PjI20zKA

On a RS row: Knit the number of stitches as stated in the pattern, turn work, bring yarn to front, slip the first stitch as if to purl, bring yarn over the needle to the back of your work and pull tight (this creates the double stitch = DS).

On a WS row: Purl the number of stitches as stated in the pattern, turn work, bring yarn to front, slip the first stitch as if to purl, bring yarn over the needle to the back of your work and pull tight (this creates the double stitch = DS).

Resolving double stitches: When working over double stitches treat them as a single stitch by knitting through both legs of the DS on a RS row

(kDS) or purling through both legs of the DS on a WS row (pDS).

Backwards loop cast-on method:

https://www.youtube.com/watch?v=goOVkdgv_ys

Lifted increases:

<https://www.purlsoho.com/create/lifted-increases-rli-lli/>

Color dominance:

<https://ysolda.com/blogs/journal/colour-dominance>

Abbreviations

beg: begin(ning)

BO: bind off

BOR: beginning of the round

CC: contrast color

circ: circumference

CO: cast on

dec: decrease

DS: double stitch (see German short rows)

inc: increase

k: knit

k2tog: knit 2 stitches together (right leaning decrease)

kDS: knit double stitch (see German short rows)

LLI: left lifted increase

lift left leg of the stitch 2 rows below the stitch on the right hand needle, onto left hand needle and knit through the back loop

m: marker

MC: main color

M1L: make one left (left leaning increase)

lift loop between stitches from front, knit (purl) into back loop

M1R: make one right (right leaning increase)

lift loop between stitches from back, knit (purl) into front loop

p: purl

pDS: purl double stitch (see German short rows)

pm: place marker

rnd(s): round(s)

RLI: right lifted increase

lift right leg of the stitch below the next stitch on the left hand needle, onto left hand needle and knit (purl) it

RS: right side

sl m: slip marker

st(s): stitch(es)

ssk: slip 2 stitches, one at a time, knitwise to the right hand needle; return stitches to left hand needle in turned position and knit them together through the back loops (left leaning decrease)

WS: wrong side

Clapton is worked seamlessly from the top down. First some short rows are worked back and forth to create a higher back neck and then the yoke is worked in the round to sleeve separation. Some last short rows are worked to finish the yoke shaping right before sleeve stitches are placed on hold. The body is then worked in rounds down to the hem. Sleeves are worked top down to the cuffs last. Optional neck finishing is worked last.

Instructions

Yoke

With MC and shorter US 3 (3.25 mm) needle, CO 104 (110, 116, 122, 128)(128, 128, 128, 128) sts, join to work in the round (being careful not to twist stitches) and place marker for BOR. Rounds beg at center of back. Change to shorter US 4 (3.5 mm) needle.

Sizes 1, 2, 3, 4:

Rnd 1: Knit to end.
Continue to *All sizes*.

Size 5:

Rnd 1: Knit to end.
Rnd 2 (inc rnd): K14, M1L, (k20, M1L) to 14 sts before end, knit to end. (6 sts inc'd)
- (-, -, -, 134)(-, -, -, -) sts
Continue to *All sizes*.

Sizes 6, 7, 8, 9:

Rnd 1: Knit to end.
Rnd 2 (inc rnd): K9, M1L, (k10, M1L) to 9 sts before end, knit to end. (12 sts inc'd)
- (-, -, -, -)(140, 140, 140, 140) sts
Continue to *All sizes*.

All sizes

Note: Change to longer US 4 (3.5 mm) circular needle when needed to accommodate the increasing number of stitches.

Short row 1: (RS) K32 (33, 35, 36, 39)(41, 41, 41, 41), turn; **(WS)** DS, purl to BOR m, sl m, p31 (32, 34, 35, 38)(40, 40, 40, 40), turn.

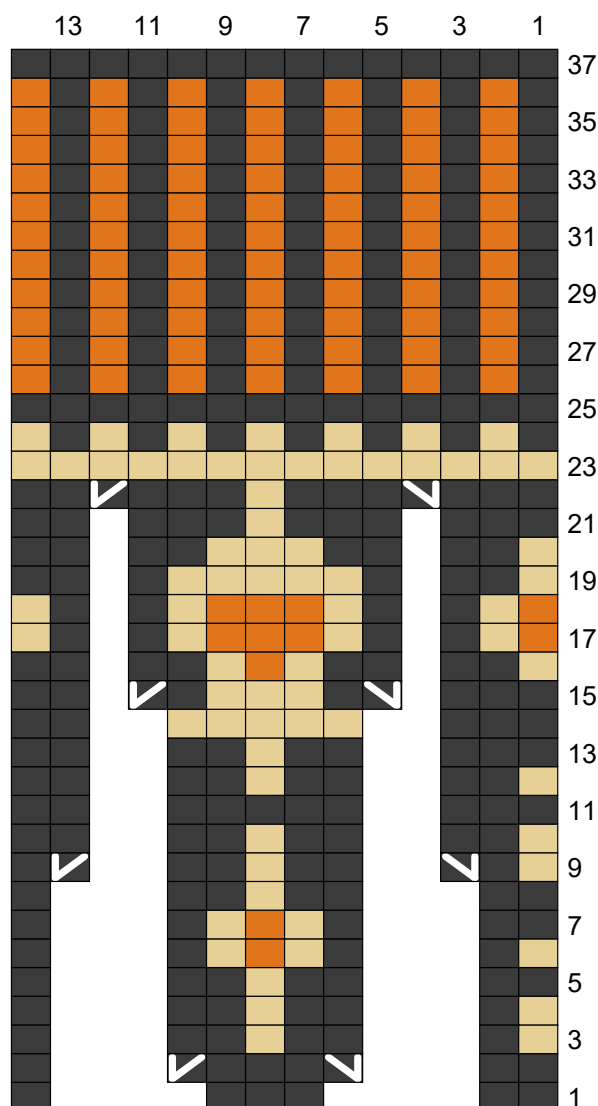
Short row 2: (RS) DS, knit to BOR m, sl m, k1, (k6, LLI) 5 times, knit to DS, kDS, k3, turn; **(WS)** DS, purl to BOR m, sl m, [p6, RLI (purl)] 5 times, purl to DS, pDS, p3, turn. (10 sts inc'd)

Short row 3: (RS) DS, knit to BOR m, sl m, knit to DS, kDS, k3, turn; **(WS)** DS, purl to BOR m, sl m, purl to DS, pDS, p3, turn.

Next row (RS): DS, knit to BOR m, sl m. 114 (120, 126, 132, 144)(150, 150, 150, 150) sts

Knit 1 round (kDS when you reach them).

Colorwork (includes 4 inc rounds)



■ knit in MC (Ursus)
■ knit in CC2 (Dark Maple)
■ knit in CC1 (Sandstone)

◀ LLI
▶ RLI

Chart is to be read from bottom to top and from right to left.

Work **rnds 1 to 37** from chart, changing colors and increasing as indicated. Break CC1 and CC2.
Note: Each increase round adds 38 (40, 42, 44, 48)(50, 50, 50, 50) sts.

266 (280, 294, 308, 336)(350, 350, 350, 350) sts

Knit 1 round.

Next rnd (place markers for raglan increases and short row shaping): K42 (45, 49, 52, 56) (60, 61, 62, 63), pm, k50 (51, 50, 51, 57)(56, 54, 52, 50), pm, k83 (89, 97, 103, 111)(119, 121, 123, 125), pm, k50 (51, 50, 51, 57)(56, 54, 52, 50), pm, knit to end.

Rnd 1 (inc for body and sleeves): (Knit to 1 stitch before m, M1R, k1, sl m, k1, M1L) 4 times, knit to end. (8 sts inc'd)

Rnd 2: Knit to end.

Rnd 3: Knit to end.

85 (91, 99, 105, 113)(121, 123, 125, 127) sts each for front and back, 52 (53, 52, 53, 59)(58, 56, 54, 52) sts for each sleeve

Repeat **rnds 1 to 3** 3 (5, 6, 9, 8)(9, 9, 9, 5) more times, then **rnds 1 + 2** - (-, -, -, -)(-, 4, 8, 15) more times.

91 (101, 111, 123, 129)(139, 149, 159, 167) sts each for front and back, 58 (63, 64, 71, 75)(76, 82, 88, 92) sts for each sleeve

Size 4: Continue to *All sizes*.

Sizes 1, 2, 3, 5, 6, 7, 8, 9:

Rnd 1 (inc for body): (Knit to 1 stitch before m, M1R, k1, sl m, knit to next m, sl m, k1, M1L) 2 times. (4 sts inc'd)

Rnd 2: Knit to end.

Continue to *All sizes*.

93 (103, 113, -, 131)(141, 151, 161, 169) sts each for front and back, 58 (63, 64, -, 75)(76, 82, 88, 92) sts for each sleeve

All sizes

Work in Stockinette stitch in rounds until yoke measures 7 (7.5, 8, 8.25, 8.75)(9.25, 9.5, 10, 10.5)" [18 (19, 20, 21, 22.5)(23.5, 24, 25.5, 26.5) cm] from CO, measured at the center front down.

Finish yoke shaping

Short row 1: (RS) Knit to m, sl m, knit to next m, sl m, k14, turn; **(WS)** DS, purl to BOR m, sl m, purl to next m, sl m, purl to next m, sl m, p14, turn.

Short row 2: (RS) DS, knit to BOR m, sl m, knit to DS, kDS, k4, turn; **(WS)** DS, purl to BOR m, sl m, purl to DS, pDS, p4, turn.

Rep **short row 2** 2 more times.

Next row: DS, knit to BOR m.

Knit 1 round (kDS when you reach them).

Separate sleeves and body

Next rnd: Remove BOR marker, knit to next m, remove m, place 58 (63, 64, 71, 75)(76, 82, 88, 92) sleeve stitches on a holder or waste yarn, remove m, using the backward loop cast on, CO 7 (7, 8, 8, 9)(10, 10, 11, 12) sts, pm (new BOR), CO

7 (7, 8, 8, 9)(10, 10, 11, 12) sts, knit to next m, remove m, place 58 (63, 64, 71, 75)(76, 82, 88, 92) sleeve stitches on a holder or waste yarn, remove m, using the backward loop cast on, CO 7 (7, 8, 8, 9)(10, 10, 11, 12) sts, pm (side marker), CO 7 (7, 8, 8, 9)(10, 10, 11, 12) sts, knit to new BOR marker.

214 (234, 258, 278, 298)(322, 342, 366, 386) sts for body

Next rnd: (P1, knit to m, sl m) 2 times.

Body

Work in Stockinette stitch with purled side 'seam' stitches until body measures approximately 11.75 (11.75, 11.25, 11.25, 10.75)(10.75, 10.75, 10.75, 10.75)" [30 (30, 28.5, 28.5, 27.5)(27.5, 27.5, 27.5, 27.5) cm] or 2.75" (7 cm) less than desired length from underarm.

Adjust stitch count

Inc rnd: (P1, k2, M1L knit to m, sl m) 2 times. (2 sts inc'd)

Continue to *Colorwork*.

216 (236, 260, 280, 300)(324, 344, 368, 388) sts

Colorwork

Next rnd: P1 in MC, k1 in CC2, (k1 in MC, k1 in CC2) to m, sl m, p1 in MC, k1 in CC2, (k1 in MC, k1 in CC2) to end.

Repeat last round one more time, break CC2 and work 2 rounds in Stockinette stitch with purled side seam stitches in MC.

Ribbing

Change to US 3 (3.25 mm) needle.

Next rnd: (P1, k1) to end (remove second marker as you go).

Repeat last round until ribbing measures approximately 2.25" (5.5 cm), knit 2 rounds. BO all stitches knitwise.

Sleeves (both alike)

Place held sleeve stitches on US 4 (3.5 mm) DPNs (or longer circular needle for magic loop), beg at the center of underarm, pick up and knit 7 (7, 8, 8, 9)(10, 10, 11, 12) sts from underarm CO, knit across sleeve stitches, pick up and knit 7 (7, 8, 8, 9)(10, 10, 11, 12) sts from underarm CO, place marker for BOR. Distribute stitches so that the first stitch of the round lines up with the purled stitch of the body.

Note: You may want to pick up one more stitch at each edge of the underarm CO to avoid holes at these points. Please decrease these stitches on next round to achieve the correct stitch count for your sleeve.

72 (77, 80, 87, 93)(96, 102, 110, 116) sts

Next rnd: P1, knit to end.

Sizes 1, 3, 6, 7, 8, 9: Continue to *All sizes*.

Sizes 2, 4, 5:

Dec rnd: P1, k1, k2tog, knit to end. (*1 stitch dec'd*)

Continue to *All sizes*.

- (76, -, 86, 92)(-, -, -, -) sts



All sizes

Work in Stockinette stitch in rounds with purled 'seam' stitch until sleeve measures 2" (5 cm) from underarm.

Dec rnd: P1, k1, k2tog, knit to last 3 sts, ssk, k1. (*2 sts dec'd*)

70 (74, 78, 84, 90)(94, 100, 108, 114) sts

Repeat **dec rnd** every 15 (12, 11, 9, 8)(7, 6, 5, 5) rounds 3 (5, 5, 3, 3)(7, 15, 19, 11) more times,

then every 14 (11, 10, 8, 7)(6, 5, 4, 4) rounds 5 (5, 6, 11, 13)(11, 5, 5, 15) times.

54 (54, 56, 56, 58)(58, 60, 60, 62) sts

Continue in Stockinette stitch in rounds with purled 'seam' stitch until sleeve measures approximately 15.25" (38.5 cm), or 2.25" (5.5 cm) less than desired length from underarm.

Colorwork

Next rnd : P1 in MC, k1 in CC2, (k1 in MC, k1 in CC2) to end.

Repeat last round one more time, break CC2 and work 2 rounds in Stockinette stitch with purled seam stitch in MC.

Sleeve ribbing

Change to US 3 (3.25 mm) DPNs (or longer circular needle for magic loop).

Next rnd: (P1, k1) to end.

Repeat last round until ribbing measures approximately 1.5" (4 cm), knit 2 rounds. BO all stitches knitwise.

Repeat instructions for second sleeve.

Neck finishing (optional, sample shows the neck unfinished)

With MC and shorter US 3 (3.25 mm) needle, beg at the center of back, pick up and knit 104 (110, 116, 122, 128)(128, 128, 128, 128) sts around neck, join to work in the round and place marker for BOR.

Next rnd: (K1, p1) to end.

Repeat last round until neck ribbing measures approximately 0.5" (1.5 cm), knit 2 rounds. BO all stitches knitwise.

Finishing

Block sweater to measurements and weave in ends.



Measurements in inches

Bust circ: 35.75 (39, 43, 46.25, 49.75)(53.75, 57, 61, 64.25)

Upper arm circ: 12 (12.75, 13.25, 14.25, 15.25) (16, 17, 18.25, 19.25)

Front neck to underarm: 7 (7.5, 8, 8.25, 8.75)(9.25, 9.5, 10, 10.5)

Body length from underarm: +/- 14.5 (14.5, 14, 14, 13.5)(13.5, 13.5, 13.5, 13.5)

Sleeve length from underarm: +/- 17.5

Measurements in cm

Bust circ: 89 (97.5, 107.5, 116, 124)(134, 142.5, 152.5, 161)

Upper arm circ: 30 (31.5, 33.5, 36, 38.5)(40, 42.5, 46, 48.5)

Front neck to underarm: 18 (19, 20, 21, 22.5)(23.5, 24, 25.5, 26.5)

Body length from underarm: +/- 37 (37, 35.5, 35.5, 34.5)(34.5, 34.5, 34.5, 34.5)

Sleeve length from underarm: +/- 44