

Christmas Belle

by Isabell Kraemer



*Christmas Belle © 2025
a handknit design by Isabell Kraemer/grasflecken.
This pattern is for unlimited personal use. Do not
reproduce or sell the pattern, or sell items that
are knitted from this pattern.
For pattern support (in English), please contact
grasfleckenbylilalu@gmail.com*

Yarn

Einrum E+2 [208 yards (227 m)/50g]; *shown in color #1002 (MC)*

Kauni Wool 8/2 Effektgarn [656 yards (600 m)/150g]; *shown in color EB (CC)*

approximately

MC: 1039 (1149, 1258, 1334, 1443)(1589, 1697, 1816, 1942) yds/ 950 (1050, 1150, 1219, 1319) (1452, 1551, 1660, 1775) m

CC: 129 (136, 142, 148, 153)(162, 166, 166, 173) yds/ 118 (124, 130, 135, 140)(148, 152, 152, 158) m

Needles

US 2 1/2 (3 mm) 16" (40 cm) and 32" (80 cm) circular needle and DPNs (or longer circular needle for magic loop) for neck CO, body and sleeve ribbing.

US 3 (3.25 mm) 16" (40 cm) and 32" (80 cm) circular needle and DPNs (or longer circular needle for magic loop) for body and sleeves.

Gauge

24 sts x 35 rows = 4" (10 cm) square in Stockinette stitch on larger needle after blocking
24 sts x 30 rows = 4" (10 cm) square in stranded colorwork on larger needle after blocking

Sizes

1 (2, 3, 4, 5)(6, 7, 8, 9)

finished bust circumference:

35.75 (39, 42.25, 45.75, 49)(53, 56.25, 59.75, 63)"

89 (97.5, 106, 114, 122.5)(132.5, 141, 149, 157.5) cm

Sample is worn with 4" (10 cm) positive ease at bust (see schematic on the last page for more detailed measurements).

Materials

Stitch holders or waste yarn, stitch markers, tapestry needle, blocking tools.

Special techniques and tips

The following links are third party links. Links to third party articles (aka tutorials) and/or websites are solely for information purposes. These other parties are responsible for the content on their website(s). You are encouraged to read and evaluate the privacy and security policies on the specific site you are entering.

German short rows:

http://www.youtube.com/watch?v=i_6PjI20zKA

On a RS row: Knit the number of stitches as stated in the pattern, turn work, bring yarn to front, slip the first stitch as if to purl, bring yarn over the needle to the back of your work and pull tight (this creates the double stitch = DS).

On a WS row: Purl the number of stitches as stated in the pattern, turn work, bring yarn to front, slip the first stitch as if to purl, bring yarn over the needle to the back of your work and pull tight (this creates the double stitch = DS).

Resolving double stitches: When working over double stitches treat them as a single stitch by knitting through both legs of the DS on a RS row (kDS) or purling through both legs of the DS on a WS row (pDS).

Backwards loop cast-on method:

https://www.youtube.com/watch?v=goOVkdgv_ys

Color dominance:

<https://ysolda.com/blogs/journal/colour-dominance>

Catching floats:

https://www.youtube.com/watch?v=ajppfcE_HAA

Abbreviations

BO: bind off

BOR: beginning of the round

CC: contrast color

circ: circumference

CO: cast on

dec: decrease

DS: double stitch (see German short rows)

inc: increase

k: knit

k2tog: knit 2 stitches together (right leaning decrease)

kDS: knit double stitch (see German short rows)

m: marker

MC: main color

M1L: make one left (left leaning increase)

lift loop between stitches from front, knit into back loop

M1R: make one right (right leaning increase)

lift loop between stitches from back, knit into front loop

M1Rp: make one right (right leaning increase)

lift loop between stitches from back, purl into front loop

p: purl

pDS: purl double stitch (see German short rows)

pm: place marker

rnd(s): round(s)

RS: right side

sl m: slip marker

st(s): stitch(es)

ssk: slip 2 stitches, one at a time, knitwise to the right hand needle; return stitches to left hand needle in turned position and knit them together through the back loops (left leaning decrease)

WS: wrong side

(): repeat instructions in brackets

Christmas Belle is worked seamlessly from the top down. First some short rows are worked back and forth to create a higher back neck and then the yoke is worked in the round with a beautiful “merry and bright” colorwork to sleeve separation. Some last short rows are worked to finish the yoke shaping right before sleeve stitches are placed on hold. The body is then worked in rounds down to the hem. Sleeves are worked top down to the cuffs last. No finishing required.

Instructions

Yoke

With MC and shorter US 2 1/2 (3 mm) needle, CO 104 (110, 110, 112, 112)(114, 114, 114, 116) sts, join to work in the round (being careful not to twist stitches) and place marker for BOR. BOR is at center of back.

Change to shorter US 3 (3.25 mm) needle.

Continue to instructions for your size.

Sizes 1, 2

Rnds 1 + 2: Knit to end, sl BOR m.

Continue to *All sizes*.

Size 3

Rnd 1: Knit to end, sl BOR m.

Rnd 2 (inc rnd): K10, M1L, (k18, M1L) to 10 sts before end, knit to end, sl BOR m. (6 sts inc'd)

- (-, 116, -, -)(-, -, -, -) sts
Continue to *All sizes*.

Size 4

Rnd 1: Knit to end, sl BOR m.

Rnd 2 (inc rnd): (K11, M1L) to 2 sts before end, knit to end, sl BOR m. (10 sts inc'd)

- (-, -, 122, -)(-, -, -, -) sts
Continue to *All sizes*.

Size 5

Rnd 1: Knit to end, sl BOR m.

Rnd 2: (K7, M1L) to end, sl BOR m. (16 sts inc'd)

- (-, -, -, 128)(-, -, -, -) sts
Continue to *All sizes*.

Size 6

Rnd 1: Knit to end, sl BOR m.

Rnd 2 (inc rnd): (K5, M1L) 3 times, (K6, M1L) to 15 sts before end, (k5, M1L) 3 times, sl BOR m. (20 sts inc'd)

- (-, -, -, -)(134, -, -, -) sts
Continue to *All sizes*.

Sizes 7, 8

Rnd 1: Knit to end, sl BOR m.

Rnd 2: K7, M1L, (k4, M1L) to 7 sts before end, knit to end, sl BOR m. (26 sts inc'd)

- (-, -, -, -)(-, 140, 140, -) sts
Continue to *All sizes*.

Size 9

Rnd 1: Knit to end, sl BOR m.

Rnd 2: (K3, M1L) 2 times, (k4, M1L) to 6 sts before end, (k3, M1L) 2 times, sl BOR m. (30 sts inc'd)

- (-, -, -, -)(-, -, -, 146) sts
Continue to *All sizes*.

All sizes

Next rnd: Knit to end, sl BOR m.

Note: Change to longer US 3 (3.25 mm) circular needle when needed to accommodate the increasing number of stitches.

Short row 1: (RS) K33 (34, 36, 37, 38)(40, 42, 42, 42), turn; **(WS)** DS, purl to BOR m, sl m, p32 (33, 35, 36, 37)(39, 41, 41, 41), turn.

Short row 2: (RS) DS, knit to BOR m, sl m, k1, (k6, M1L) 5 times, knit to DS, kDS, k3, turn; **(WS)** DS, purl to BOR m, sl m, [p6, M1Rp] 5 times, purl to DS, pDS, p3, turn. (10 sts inc'd)

114 (120, 126, 132, 138)(144, 150, 150, 156) sts

Short row 3: (RS) DS, knit to BOR m, sl m, knit to DS, kDS, k3, turn; **(WS)** DS, purl to BOR m, sl m, purl to DS, pDS, p3, turn.

Next row (RS): DS, knit to BOR m, sl m.

Knit 1 round (kDS when you reach them).

Continue to *Colorwork*.

Colorwork (includes 6 inc rounds)

Work **rnds 1 to 49** from chart, changing colors and increasing as indicated. Break CC.

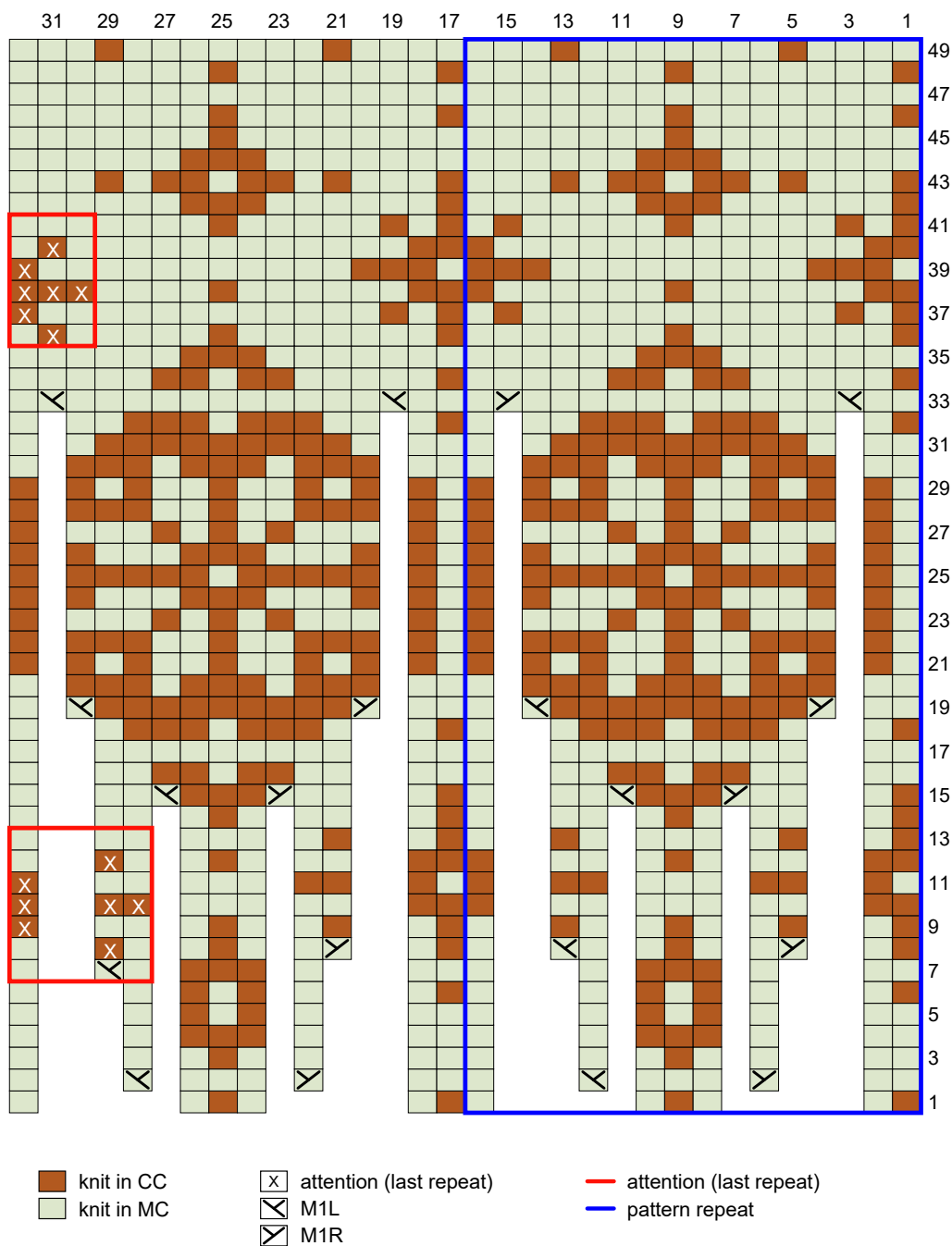


Chart is to be read from bottom to top and from right to left.

For each round you will work a total of 19 (20, 21, 22, 23)(24, 25, 25, 26) pattern repeats.

18 (19, 20, 21, 22)(23, 24, 24, 25) times as shown in the **blue box**, then work the last repeat as indicated (this last “repeat” is different for the very last stitch(es) in **rounds 7 - 13, 36 - 41**).

These changes were made to make the beginning of the round less visible in the colorwork pattern.

You may find it helpful to place a marker before the last repeat.

Stitch count after rnd 2: 152 (160, 168, 176, 184)(192, 200, 200, 208) sts

Stitch count after rnd 7: 153 (161, 169, 177, 185)(193, 201, 201, 209) sts

Stitch count after rnd 8: 190 (200, 210, 220, 230)(240, 250, 250, 260) sts

Stitch count after rnd 15: 228 (240, 252, 264, 276)(288, 300, 300, 312) sts

Stitch count after rnd 19: 266 (280, 294, 308, 322)(336, 350, 350, 364) sts

Stitch count after rnd 33: 304 (320, 336, 352, 368)(384, 400, 400, 416) sts

Next rnd: Knit to end, sl BOR m.

Continue to instructions for your size.

Size 1

Continue to *All sizes*.

Size 2

Next rnd (inc rnd): K7, M1L, knit to 7 sts before end, M1L, knit to end, sl BOR m. (2 sts inc'd)

- (322, -, -, -)(-, -, -, -) sts

Continue to *All sizes*.

Size 3

Next rnd (inc rnd): K20, M1L, (k33, M1L) to 19 sts before end, knit to end, sl BOR m. (10 sts inc'd)

- (-, 346, -, -)(-, -, -, -) sts

Continue to *All sizes*.

Size 4

Next rnd (inc rnd): K15, M1L, (k19, M1L) to 14 sts before end, knit to end, sl BOR m. (18 sts inc'd)

- (-, -, 370, -)(-, -, -, -) sts

Continue to *All sizes*.

Size 5

Next rnd (inc rnd): K9, M1L, (k14, M1L) to 9 sts before end, knit to end, sl BOR m. (26 sts inc'd)

- (-, -, -, 394)(-, -, -, -) sts

Continue to *All sizes*.

Size 6

Next rnd (inc rnd): (K11, M1L) to 10 sts before end, knit to end, sl BOR m. (34 sts inc'd)

- (-, -, -, -)(418, -, -, -) sts

Continue to *All sizes*.

Size 7

Next rnd (inc rnd): K20, M1L, (k8, M1L) to 20 sts before end, knit to end, sl BOR m. (46 sts inc'd)

- (-, -, -, -)(-, 446, -, -) sts

Continue to *All sizes*.

Size 8

Next rnd (inc rnd): (K6, M1L, k5, M1L, k5) to end, sl BOR m. (50 sts inc'd)

- (-, -, -, -)(-, -, 450, -) sts

Knit 17 rounds.

Next rnd (inc rnd): (K18, M1L) to 18 sts before end, knit to end, sl BOR m. (24 sts inc'd)

- (-, -, -, -)(-, -, 474, -) sts

Continue to *All sizes*.

Size 9

Next rnd (inc rnd): (K6, M1L, k5, M1L, k5) to end, sl BOR m. (52 sts inc'd)

- (-, -, -, -)(-, -, -, 468) sts

Knit 17 rounds.

Next rnd (inc rnd): (K13, M1L) 4 times, (k14, M1L) 26 times, (k13, M1L) 4 times, sl BOR m. (34 sts inc'd)

- (-, -, -, -)(-, -, -, 502) sts

Continue to *All sizes*.

All sizes

Work in Stockinette stitch in rounds until yoke measures 7.25 (7.75, 8, 8.75, 9) (9.5, 9.75, 9.75, 9.75)" [18.5 (19.5, 20.5, 22, 23)(24, 25, 25, 25) cm] from CO, measured at the center front down.

Finish yoke shaping

Short row 1: (RS) K117 (122, 129, 137, 145)(151, 162, 172, 182), turn; **(WS)** DS, purl to BOR m, sl m, p116 (121, 128, 136, 144)(150, 161, 171, 181), turn.

Short row 2: (RS) DS, knit to BOR m, sl m, knit to DS, kDS, k8, turn; **(WS)** DS, purl to BOR m, sl m, purl to DS, pDS, p8, turn.

Next row: DS, knit to BOR m, sl m.

Knit 1 round (kDS when you reach them).



Separate sleeves and body

Next rnd: K47 (51, 55, 59, 63)(68, 72, 76, 80), place following 59 (60, 64, 68, 72)(74, 80, 86, 92) sleeve stitches on a holder or waste yarn, using the backward loop cast-on, CO 7 (8, 9, 10, 11)(12, 13, 14, 15) sts, **pm (new BOR)**, CO 7 (8, 9, 10, 11)(12, 13, 14, 15) sts, k93 (101, 109, 117, 125)(135, 143, 151, 159) front sts, place following 59 (60, 64, 68, 72)(74, 80, 86, 92) sleeve stitches on a holder or waste yarn, using the backward loop cast-on, CO 14 (16, 18, 20, 22)(24, 26, 28, 30) sts, knit to old BOR m (at center of back), remove old BOR m, knit to new BOR m (at center of right underarm), sl m.

214 (234, 254, 274, 294)(318, 338, 358, 378) sts for body

Body

Work in Stockinette stitch in rounds until body measures approximately 13.5" (34 cm) or 1.5" (4 cm) less than desired length from underarm.

Ribbing

Change to US 2 1/2 (3 mm) needle.

Next rnd: (K1, p1) to end, sl m

Repeat last round until ribbing measures approximately 1.5" (4 cm).

BO all stitches in pattern.

Sleeves (both alike)

Place held sleeve stitches on US 3 (3.25 mm) DPNs (or longer circular needle for magic loop), beg at the center of underarm, pick up and knit 7 (8, 9, 10, 11)(12, 13, 14, 15) sts from underarm CO, knit across sleeve stitches, pick up and knit 7 (8, 9, 10, 11)(12, 13, 14, 15) sts from underarm CO, place marker for BOR.

Note: You may want to pick up one more stitch at each edge of the underarm CO to avoid holes at these points. Please decrease these stitches in the next round to achieve the correct stitch count for your sleeve.

73 (76, 82, 88, 94)(98, 106, 114, 122) sts

Size 1

Dec rnd: K1, k2tog, knit to end, sl m. (1 stitch dec'd)

72 (-, -, -, -)(-, -, -, -) sts

Continue to *All sizes*.

Sizes 2 - 9

Continue to *All sizes*.

All sizes

Work in Stockinette stitch in rounds until sleeve measures 2" (5 cm) from underarm.

Dec rnd: K1, k2tog, knit to last 3 sts, ssk, k1, sl m. (2 sts dec'd)

70 (74, 80, 86, 92)(96, 104, 112, 120) sts

Repeat **dec rnd** every

12 (10, 9, 7, 6)(6, 5, 4, 4) rounds

(this means you will work 11 (9, 8, 6, 5)(5, 4, 3, 3) rounds in Stockinette stitch, then work dec rnd) 9 (11, 12, 15, 18)(19, 23, 26, 25) times.

52 (52, 56, 56, 56)(58, 58, 60, 70) sts

Sizes 1 - 8

Continue to *All sizes*.

Size 9

Repeat **dec rnd** every 3 rounds 5 more times.

- (-, -, -, -)(-, -, -, 60) sts

All sizes

Continue in Stockinette stitch in rounds until sleeve measures approximately 15.75" (40 cm), or 1.5" (4 cm) less than desired length from underarm.

Sleeve ribbing

Change to US 2 1/2 (3 mm) DPNs (or longer circular needle for magic loop).

Next rnd: (K1, p1) to end, sl m.

Repeat last round until ribbing measures approximately 1.5" (4 cm).

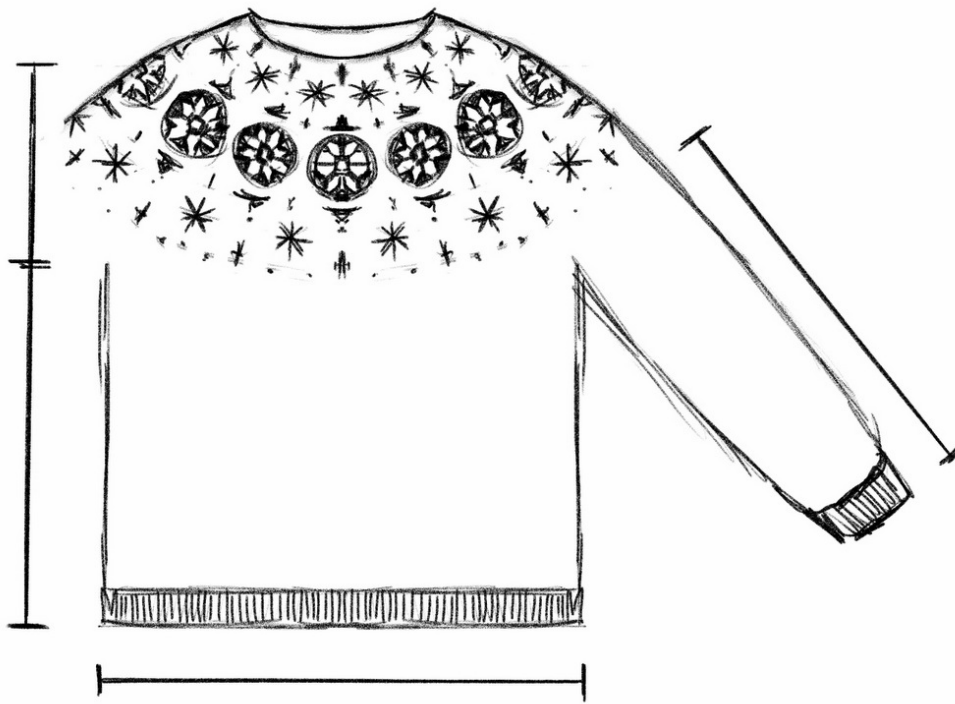
BO all stitches in pattern.

Repeat instructions for second sleeve.

Finishing

Block sweater to measurements and weave in ends.

Schematic



Measurements in inches

Bust circ: 35.75 (39, 42.25, 45.75, 49)(53, 56.25, 59.75, 63)

Upper arm circ: 12 (12.75, 13.75, 14.75, 15.75) (16.25, 17.75, 19, 20.25)

Yoke depth (center front): 7.25 (7.75, 8, 8.75, 9) (9.5, 9.75, 9.75, 9.75)

Body length from underarm: +/- 15

Sleeve length from underarm: +/- 17.25

Measurements in cm

Bust circ: 89 (97.5, 106, 114, 122.5)(132.5, 141, 149, 157.5)

Upper arm circ: 30 (31.5, 34, 36.5, 39)(41, 44, 47.5, 51)

Yoke depth (center front): 18.5 (19.5, 20.5, 22, 23)(24, 25, 25, 25) cm

Body length from underarm: +/- 38

Sleeve length from underarm: +/- 44