

BonBon Cardi



English Ver. 4.2

BonBon Cardi

Designed by miir_knits

BonBon cardi

The BonBon Cardi is a V-neck, lace, short-sleeved cardigan featuring adorable eyelet motifs that resemble round candies.

It has a relaxed shoulder line and a slightly cropped length.

Comfortable and versatile, it can be styled in many different ways.

The cardigan is worked from the top down and finished with a lace edging.

For transitional seasons, it also looks elegant with longer sleeves.



Sizes

(cm)	Ⓐ Armhole Length	Ⓑ Body Length	Ⓒ Bust Circ.	Ⓓ Sleeve Length
1 Size	21	48	97	20
2 Size	21.5	48.5	100	20
3 Size	22.5	49.5	104	21
4 Size	23.5	50.5	112	23
5 Size	27	54	125	25
6 Size	27.5	54.5	137	25

YARN

De Rerum Natura Candide (col. Sucre Glace, Eau de Rose), 50g / 185m — 6 (7, 8, 8, 8, 9) balls

NEEDLES

3.0 mm and 3.5 mm wooden needles or size needed to obtain gauge

GAUGE

23 sts × 37 rows = 10 × 10 cm over main pattern using 3.5 mm needles

BUTTONS

11 mm — 7 (7, 7, 7, 8, 8) pieces

Sizes: 1 (2, 3, 4, 5, 6)

To Fit Bust: XS (S, M, L, XL, XXL)

Model is wearing Size 2 with 6 cm of positive ease.

Choose your size based on your actual bust measurement.

CONSTRUCTION — Before You Start...

The BonBon Cardi is constructed by knitting the back first, then picking up sts from both shoulder edges to form the fronts. After working down to the armholes, the front and back pieces are joined and continued in one piece for the body. Sleeves are picked up and shaped using short rows.

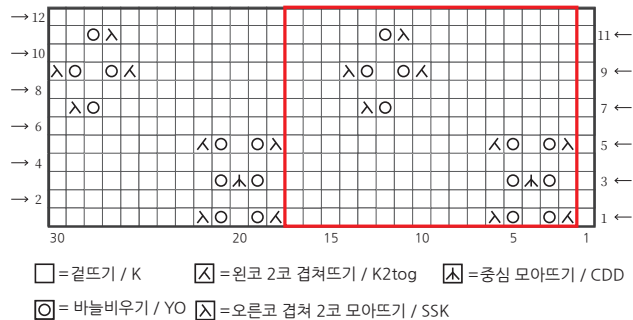
Check your gauge using the main pattern before starting.

(Refer to the instructions on the next page for details.)

BonBon cardi

Main motif: 16sts 12 rows repeat (outlined in red box)

*기본무늬 16코 12단 1무늬 / (평면뜨기)
16 sts x 12 rows repeat (work flat)



Using main 3.5 mm needle, cast on 30 sts.(Work flat)

Row 1 (RS): K1, K2tog, yo, K1, yo, SSK, K11, K2tog, yo, K1, yo, SSK, K8

Row 2 and all WS rows: P

Row 3 (RS): K2, yo, CDD, yo, K13, yo, CDD, yo, K9

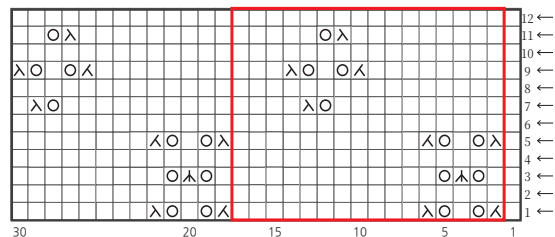
Row 5 (RS): K1, SSK, yo, K1, yo, K2tog, K11, SSK, yo, K1, yo, K2tog, K8

Row 7 (RS): K11, yo, SSK, K14, yo, SSK, K1

Row 9 (RS): K9, K2tog, yo, K1, yo, SSK, K11, K2tog, yo, K1, yo, SSK

Row 11 (RS): K10, SSK, yo, K14, SSK, yo, K2

*기본무늬 16코 12단 1무늬 / (원형뜨기)
16 sts x 12 rows repeat (work in the round)



Work the underarm section of the sleeve in the round, following the chart above.



BonBon cardi



ABBREVIATION

BO bind off

BOR beginning of round

CO cast on

RS right side, outside

WS wrong side, inside

M, m stitch marker

pm place marker

DS double sts made during GSR

GSR German short row

K knit

L/RN left/right needle

M1L make 1 left: with LN, pick up the bar between sts from front to back and knit through the back loop (1 st increased)

M1R make 1 right: with LN, pick up the bar between sts from back to front and knit through the front loop (1 st increased)

P purl

Rep repeat

Rnd round

St(s) stitch(es)

tbl Through the Back Loop

sl slip st purlwise unless otherwise noted

k2tog knit 2 sts together

p2tog purl 2 sts together

ssk slip 2 sts knitwise one at a time, return 2 sts to LHN, then k2togtbl

ssp slip 2 sts knitwise one at a time, return 2 sts to LHN, then p2togtbl

CDD central double decrease: slip 2 sts together knitwise, K1, pass 2 slipped sts over

YO yarn over

Backward Loop Cast On (BLCO)

1. Hold your knitting needle and the tail of your yarn in your right hand.

2. Grab your yarn with your left hand and stretch it out a few inches from your needle.

3. Take your index finger or thumb and wrap the yarn around it by making a loop: wrap yarn around your finger from below then around the top again. You should now have a loop on your finger.

4. Transfer the loop onto your knitting needle: Slide your knitting needle into the side of the loop and release the loop off your finger as you tighten the yarn around the needle.

Repeat 3-4 to cast on the number of sts required.



German Short Row (GSR) - Make Double Stitch (mDS)

Knit Row and Purl Row worked alike: Work the number of sts as specified in the pattern.

1. Turn the work, slip 1 st purlwise with yarn in front. Tug the yarn up and over the needle. This creates a double stitch (DS). Work the next row as instructed in the pattern.

2. To complete the short row, knit or purl the double sts together as you encounter them while you work on the next Row.

----- *instruction begins here*

1. Cast On & BACK

- Cast on 47 (47, 47, 47, 47, 47) sts using 3.5mm needles.
- Setup Row (WS): K1, P1, work Back Chart for your size, P1, K1
(Maintain 1 garter st at each edge and 1 stockinette st at the armhole edge throughout.)
- Shoulder increases:
Next Row (RS): K2, work Row 1 of Back Chart, K2
Next Row (WS): K1, P1, work Back Chart, P1, K1
Repeat the above 2 rows for 24 (24, 24, 24, 34, 34) rows in total.
You have 95 (95, 95, 95, 115, 115) sts.
- Without further increasing, continue in pattern for a total of 72 (72, 72, 72, 84, 84) rows.
(If your row gauge is slightly off, end on Row 6 or Row 12 of the pattern repeat.)
- Armhole increases:
Next Row (RS): K2, work pattern, K2
Next Row (WS): K1, P1, work pattern, P1, K1
Repeat these two rows for 6 (8, 10, 14, 16, 18) rows in total.
You will have 101 (103, 105, 109, 131, 133) sts.

Armhole length should now measure approx. 22.5 (23, 24, 25, 27, 27.5) cm.

Break yarn.

2. RIGHT FRONT

- Pick up and knit 26 (26, 26, 26, 36, 36) sts along the increased edge of the back shoulder.

- Setup Row (WS): K1, P to 1 stitch before end, K1
(Maintain 1 garter edge st and 1 stockinette st at armhole edge.)
Please see the corresponding Right Front chart.
- Front edge increases:
Next Row (RS): K2, work Right Front Chart
Next Row (WS): K1, P to 1 st before end, K1
Repeat the above 2 rows for 66 rows in total.
You will have 45 (45, 45, 45, 55, 55) sts.
- Without further increasing, continue until row count matches the back:
72(72, 72, 72, 84, 84) rows in total.
- Armhole increases:
Next Row (RS): K2, work chart
Next Row (WS): K1, P to 1 st before end, K1
Rep these 2 rows for 6 (8, 10, 14, 16, 18) rows.
You will have 48(49, 50, 52, 63, 64) sts.

Armhole length should be approx. 22.5 (23, 24, 25, 27, 27.5) cm.

Break yarn.

3. LEFT FRONT

- Work as for Right Front, but mirrored. Don't break yarn.

4. JOINGING FRONT & BACK

Next Row (RS):

Follow the armhole chart for your size and:

- Work Left Front: 48 (49, 50, 52, 63, 64) sts,
- Cast on using backward loop (BLCO): 11 (11, 15, 19, 13, 25) sts
- Work Right Front: 48 (49, 50, 52, 63, 64) sts
You now have 219 (223, 235, 251, 283, 311) sts in total.

Next Row (WS): K1, purl to 1 st before end, K1

(Continue working with 1 garter edge st on both sides.)

Work the armhole charts for your size until the measures 27 cm from the underarm, where the fronts and back were joined.
(End on Row 6 or Row 12 of the pattern repeat, if needed.)

On the final row, adjust stitch counts:

- Size 1: decrease 2 sts evenly spaced to finish with 217 sts.
- Sizes 2, 3, 5: no change
- Size 4: decrease 4 sts evenly spaced to finish with 247 sts.
- Size 6: decrease 4 sts evenly spaced to finish with 307 sts.

New stitch counts: 217 (223, 235, 247, 283, 307) sts

5. LACE HEM

Switch to 3.0mm needles

- Row 1* (RS): (K1, P1) to last stitch, K1

**helpful tip: if you insert a lifeline after finishing the Row1 of lace hem, it will be easier to identify where to insert you needle for lace bind-off.*

Be careful not to work your lifeline into your sts, slip the lifeline off as you finish sections of lace bind - off.

- Row 2 (WS): (P1, K1) to last stitch, P1
- Repeat Rows 1-2 for a total of 6 rows.

For the lace bind-off: using a tutorial video, bind off every 6th st by inserting the needle into the sts 6 rows below.

* Lace BO : https://www.instagram.com/reel/DMzrXoBxafa/?utm_source=ig_web_copy_link

6. SLEEVES

With 3.5mm needles, pick up sts

around armhole as follows:

- Begin from the center of underarm BLCO: pick up 5 (5, 7, 9, 6, 12) sts
- Pick up along the front side of the sleeve: 43 (43, 44, 47, 50, 50) sts
- Pick up 1 st at the center of the sleeve cap (mark this st with a removable stitch m)
- Pick up along the back side of sleeve: 43 (43, 44, 47, 50, 50) sts
- From backward-loop cast-on: 6 (6, 8, 10, 7, 13) sts

Total: 98 (98, 104, 114, 114, 126) sts

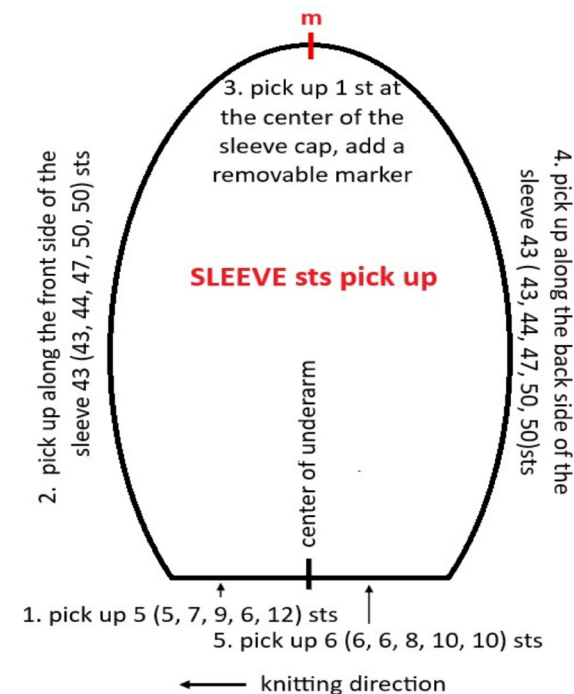
Break yarn.

Short rows for sleeve cap:

Join yarn and work across 7 sts before and after the center marker (7 sts - 1 marked st - 7 sts) for a total of 15 sts.

Using the sleeve cap chart (See chart on page 15.) :

- Work 15 sts in pattern, turn, YO, sl 1 st purlwise
- Purl 14 sts, turn, YO, sl 1 st purlwise
- Knit to previous wrap, SSK, work 2 sts in pattern, turn
- Purl to previous wrap, SSP, purl 2 sts, turn



- Repeat short rows 6 times, increasing the worked section by 2 sts each time
- Then repeat short rows 24 (24, 25, 28, 28, 31) times, increasing by 1 st each time

Next Row (RS):

Work 1 row, knitting all double sts/wraps together as 1 stitch to complete short-row shaping.

Mark the center underarm stitch (from underarm cast-on area).

Begin working in the round.

Rnds 1-3: Work in pattern

Rnd 4 (Decrease round):

- Slip m, K1, K2tog, knit to last 3 sts before m, SSK, K1 (2 sts decreased).

Repeat Rnds 1-4 a total of 5 (5, 6, 7, 7, 7) times → Total: 20 (20, 24, 28, 28, 28) rounds

Now you have 88 (88, 92, 100, 103, 112) sts.

Adjust stitch count for bind-off on the last Rnd:

- Sizes 1, 2, 4, 6: decrease 4sts evenly to 84, 84, 96, 108.
- Size 3: decrease 2 st to 90 sts.
- Size 5: decrease 1 st to 102 sts.

Final stitch counts: 84 (84, 90, 96, 102, 108) sts

Sleeve Hem (Lace Bind-Off)

Switch to 3.0mm needles

Rnd 1* : (K1, P1) to last stitch

Rnds 2-6: Work 1x1 rib in pattern.

Follow the same method as the body hem.

BO every 6th st by inserting the needle 6 rows below.

7. FRONT EDGING & NECKLINE

Using 3.0mm needles, pick up and knit the sts in the following order:

- Right front edge: 85 (85, 85, 91, 97, 97) sts, pm
- Right neckline: 66 (66, 66, 66, 66, 66) sts
- Back neck: 47 (47, 47, 47, 47, 47) sts
- Left neckline: 66 (66, 66, 66, 66, 66) sts
- Left front edge: 85 (85, 85, 91, 97, 97) sts

Total: 349 (349, 349, 361, 373, 373) sts

Work ribbing:

- Row 1 (WS): (P1, K1) to last stitch, P1
- Row 2 (RS): (K1, P1) to last stitch, K1
- Buttonhole Row (WS):
Work in (P1, K1) rib pattern to the marker on the right front edge (button band).
Then repeat the following section 7 (7, 7, 7, 8, 8) times:
[P1, K1, YO, K2tog, P1, K1, (P1, K1) three times], End with P1. (For Size 4, work an additional 6 sts in rib at the end.)
You will now have 7 (7, 7, 7, 8, 8) buttonholes in total.

Continue ribbing as follows:

- Row 1 (RS): (K1, P1) to last stitch, K1
- Row 2 (WS): (P1, K1) to last stitch, P1

Lace Bind-Off (RS):

As with previous lace edges, bind off every 6th st by inserting the needle 6 rows below.

https://www.instagram.com/reel/DMzrXoBxafa/?utm_source=ig_web_copy_link

BonBon cardi

Final Notes

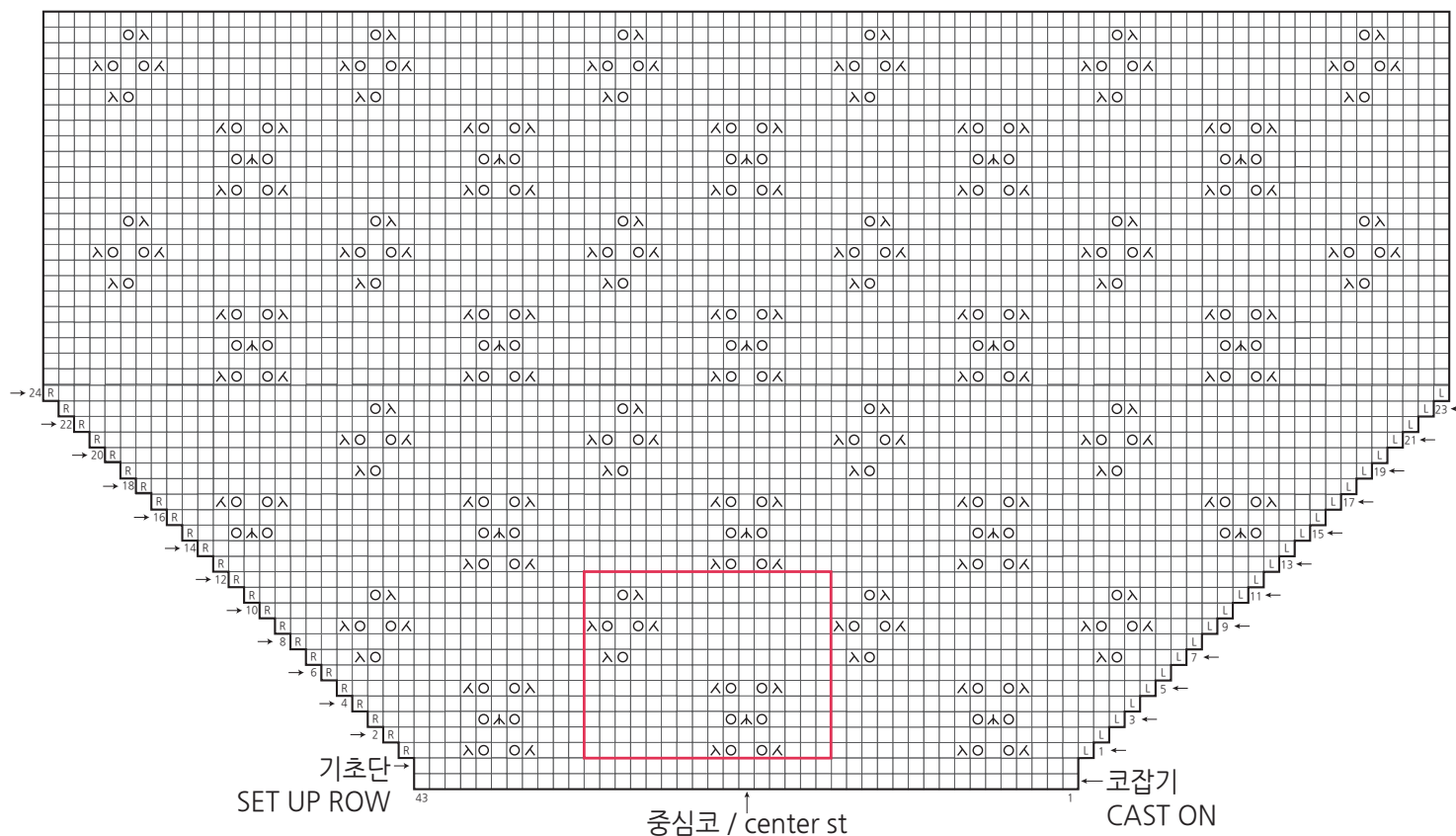
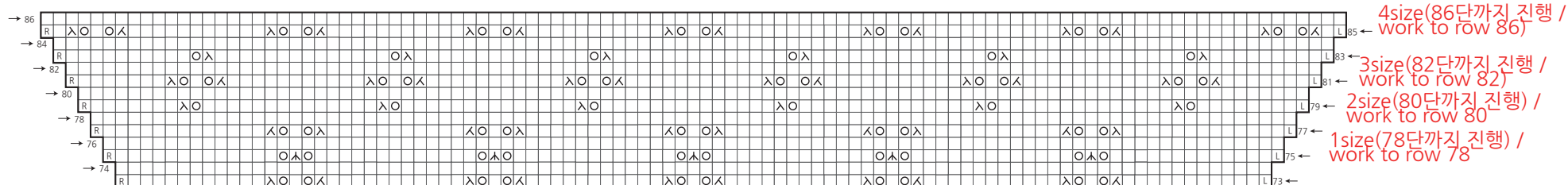
- Use the stitch charts for lace and shaping as referenced for each size.
- Block the finished garment carefully for the lace to bloom and set the measurements.
- Sew on 7 (7, 7, 7, 8, 8) buttons to match the buttonholes.

Share your BonBon Cardi!
#bonboncardi @miir_knits



BonBon cardi

• Size 1,2,3,4 뒷면 차트 / BACK

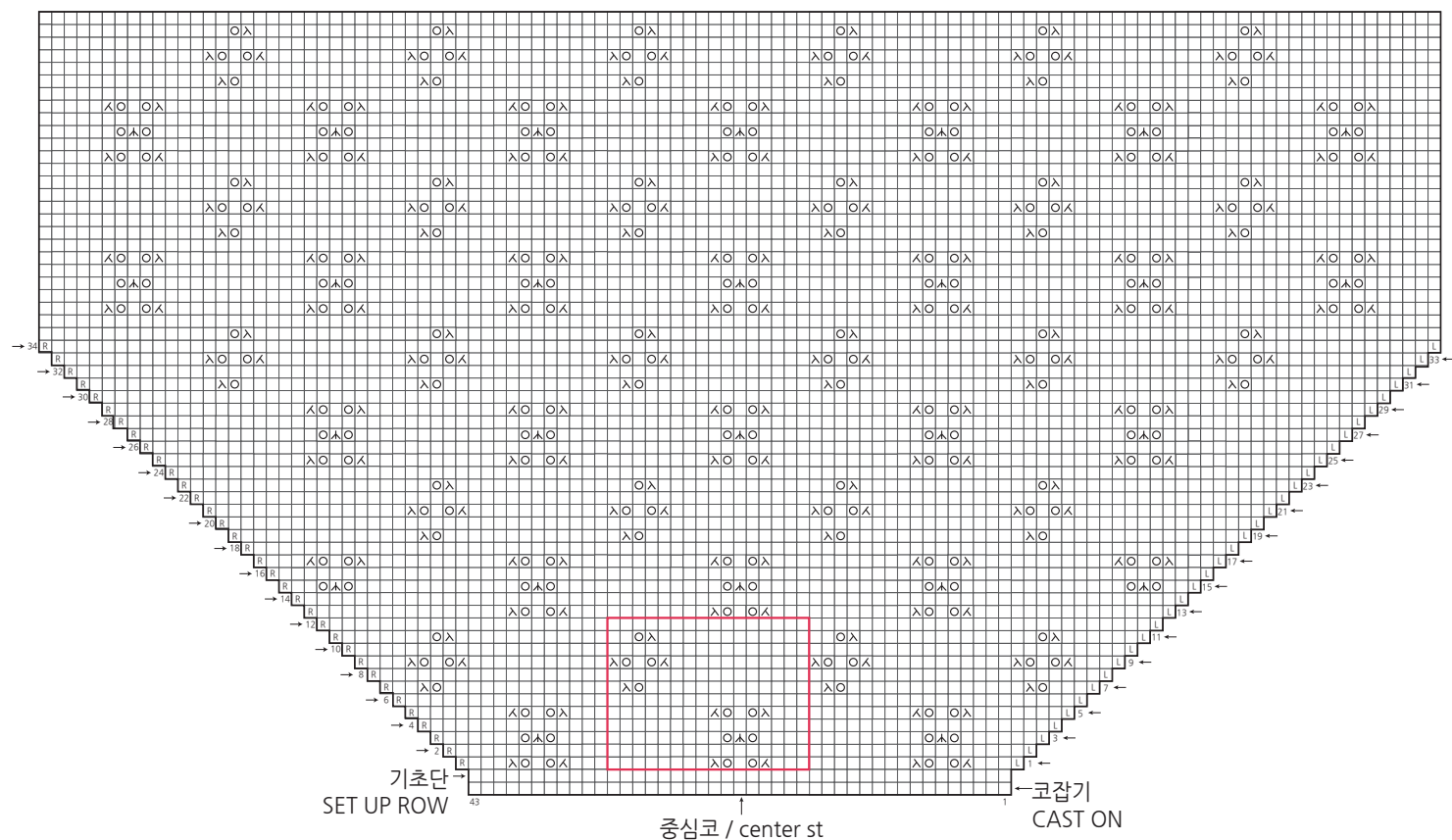
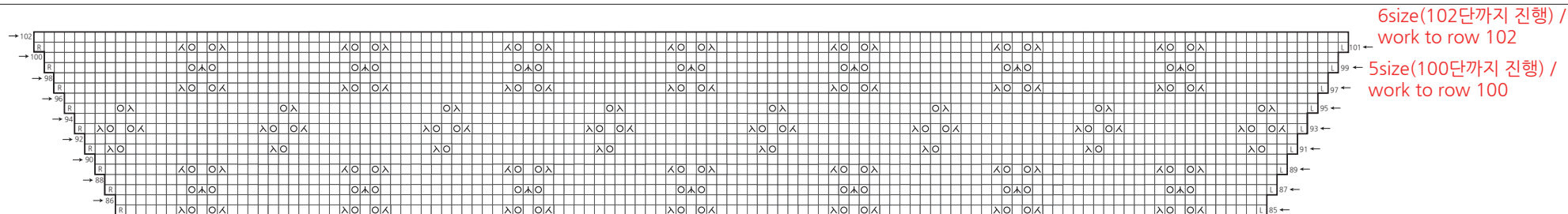


뜨개 기호 설명

□ = 겹뜨기 K	⊠ = 원코2코 겹쳐뜨기 K2tog	Ⓜ = 오른쪽 늘리기 M1R
▢ = 안뜨기 P	⊡ = 오른쪽2코 겹쳐뜨기 SSK	Ⓛ = 원코 늘리기 M1L
⊙ = 바늘비우기 YO	⊞ = 중심3코모아뜨기 CDD	

BonBon cardi

• Size 5, 6 뒷면 차트 / BACK

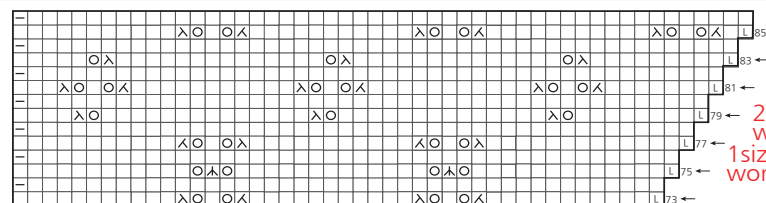
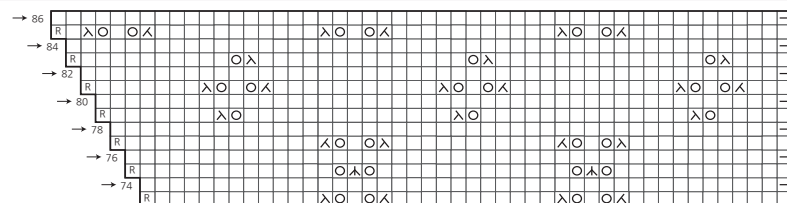


뜨개 기호 설명

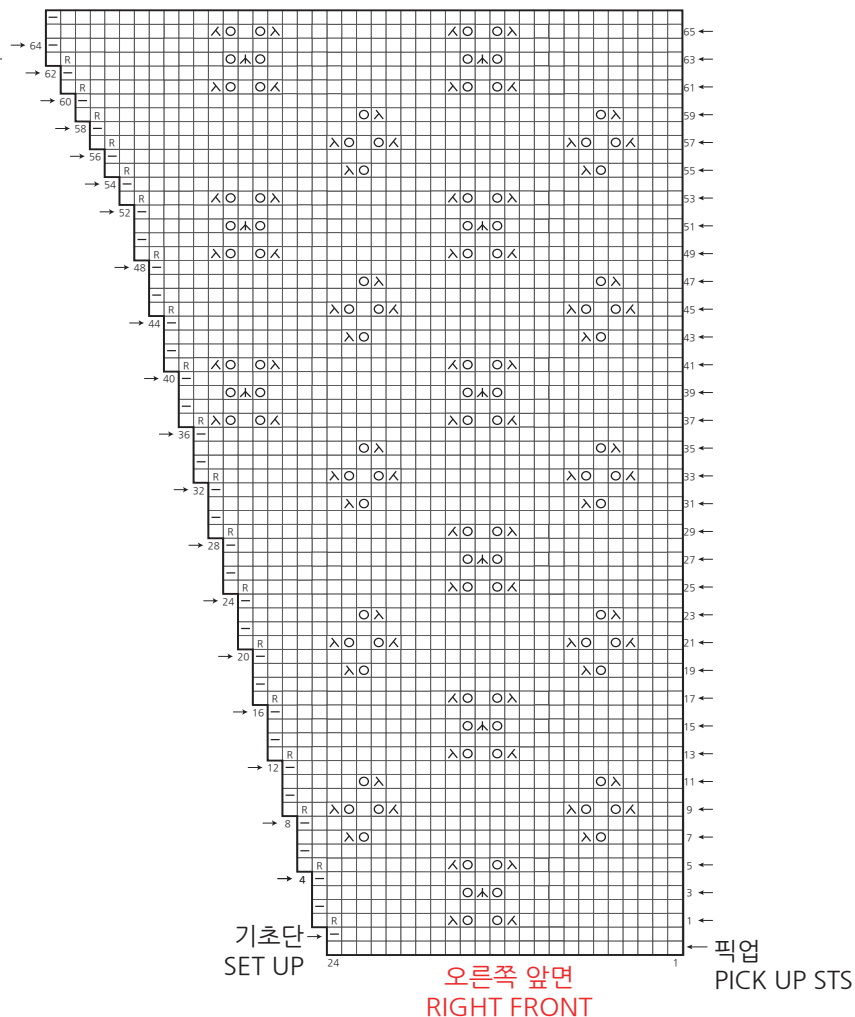
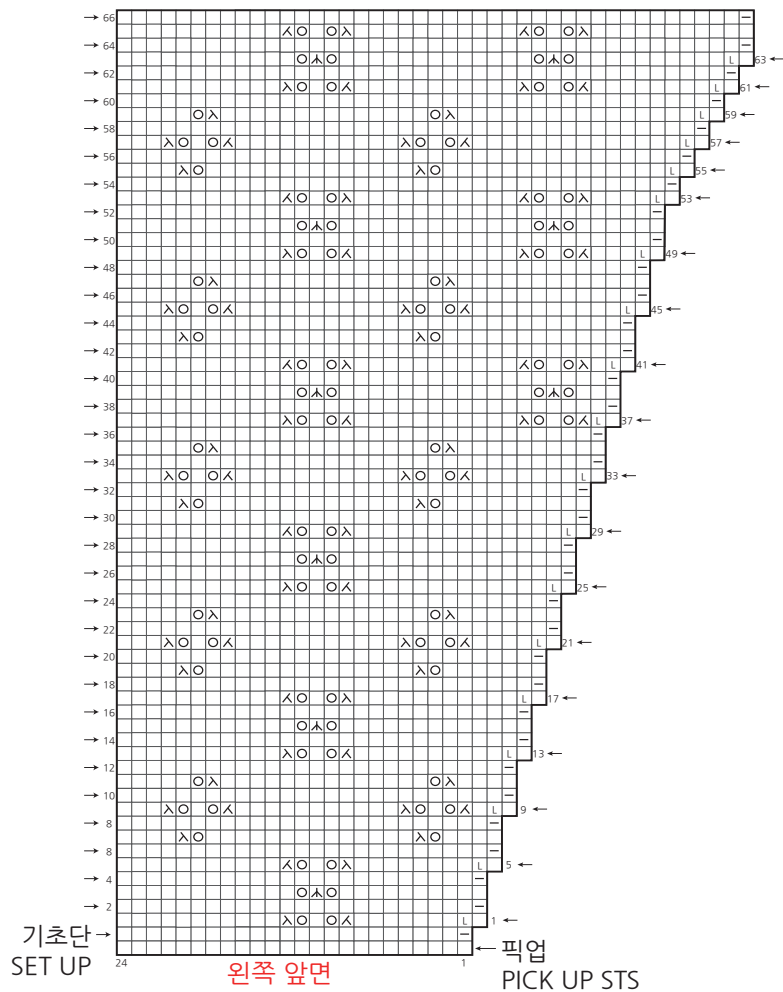
□ = 겹뜨기 K	⊠ = 원코2코 겹쳐뜨기 K2tog	Ⓜ = 오른코 늘리기 M1R
▢ = 안뜨기 P	⊡ = 오른코2코 겹쳐뜨기 SSK	Ⓛ = 원코 늘리기 M1L
⊙ = 바늘비우기 YO	⊞ = 중심3코모아뜨기 CDD	

BonBon cardi

• Size 1,2,3,4 앞면 차트 / FRONT

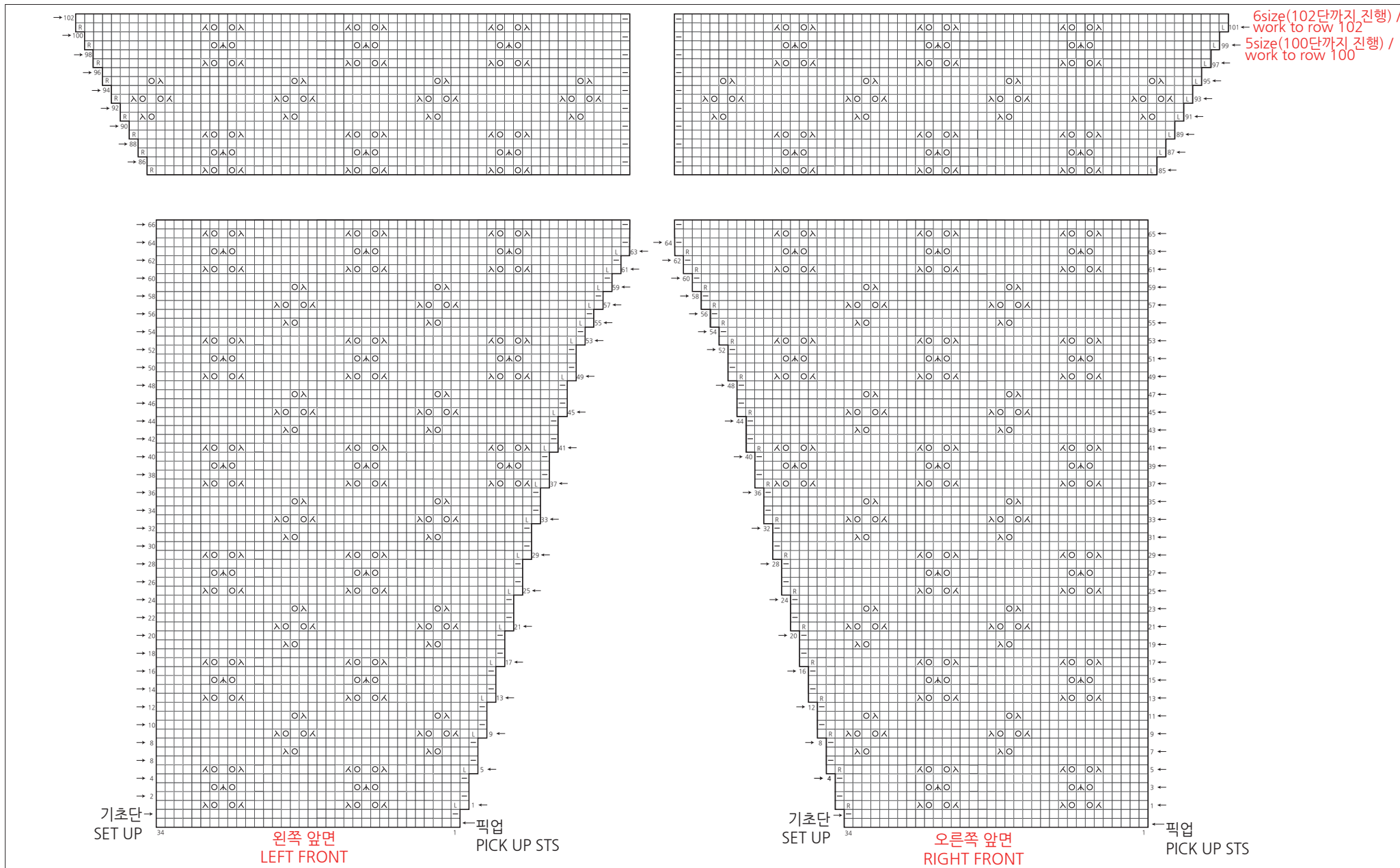


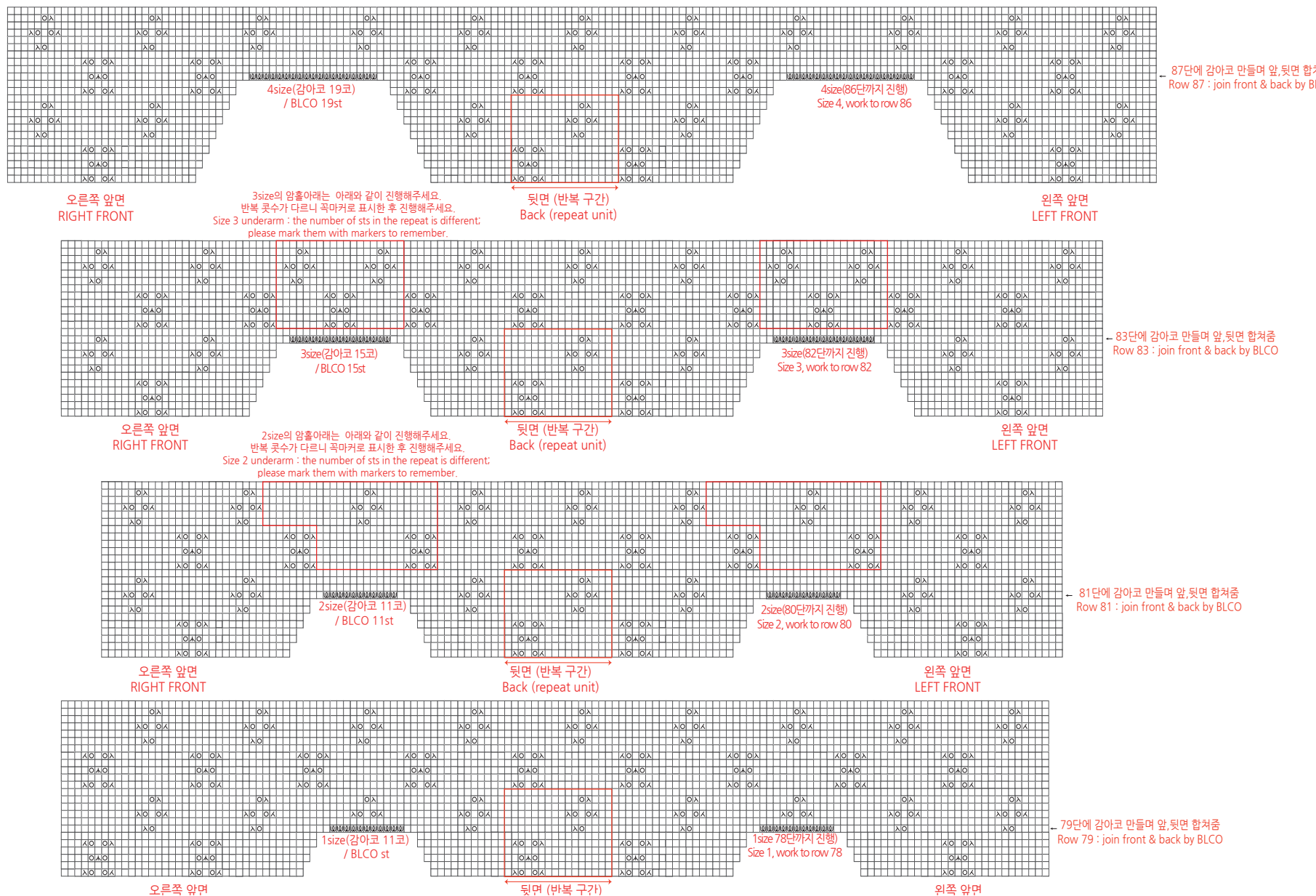
4size(86단까지 진행 /
work to row 86)
3size(82단까지 진행 /
work to row 82)
2size(80단까지 진행) /
work to row 80
1size(78단까지 진행) /
work to row 78



BonBon cardi

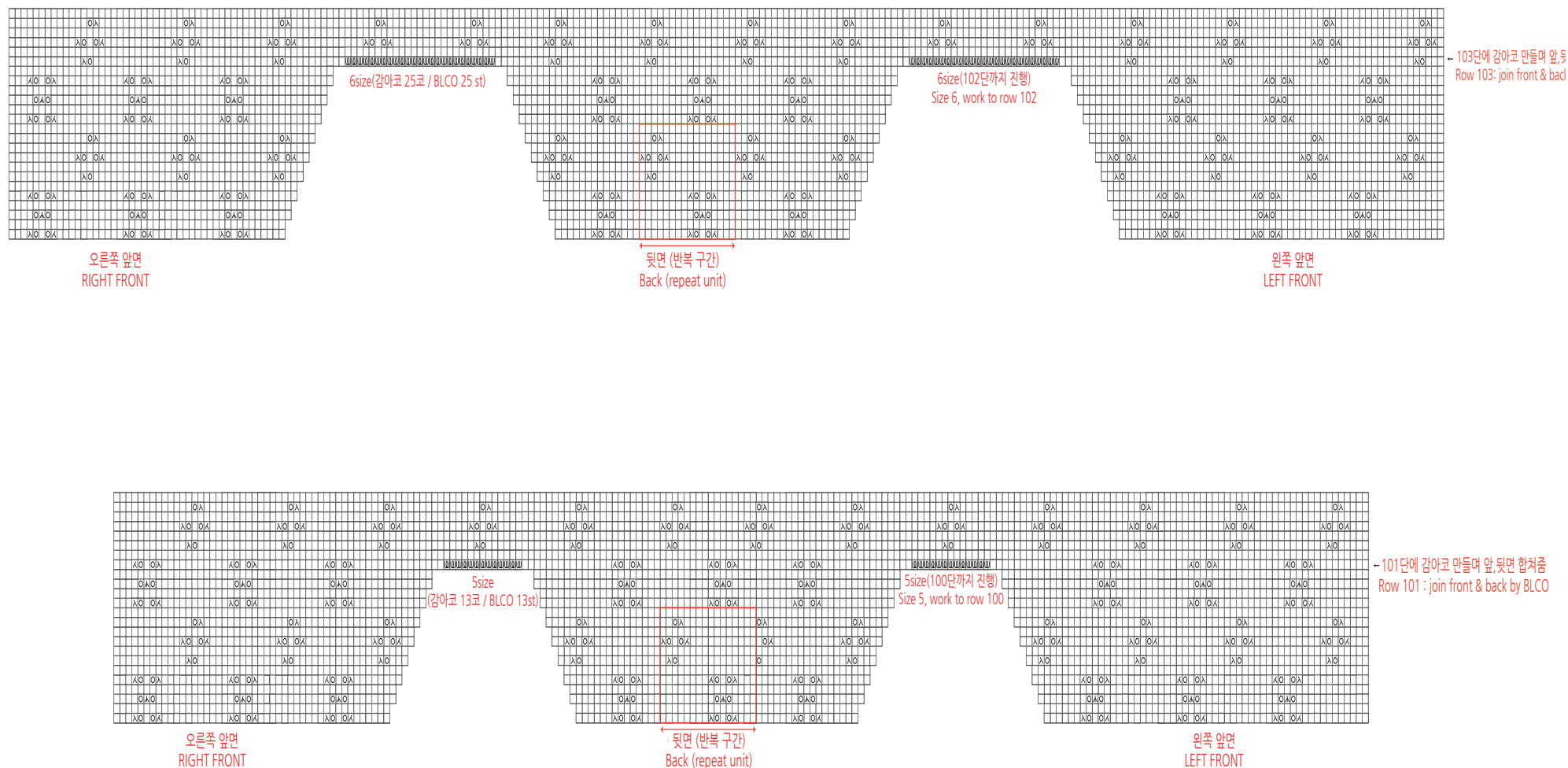
• Size 5, 6 앞면 차트 / FRONT





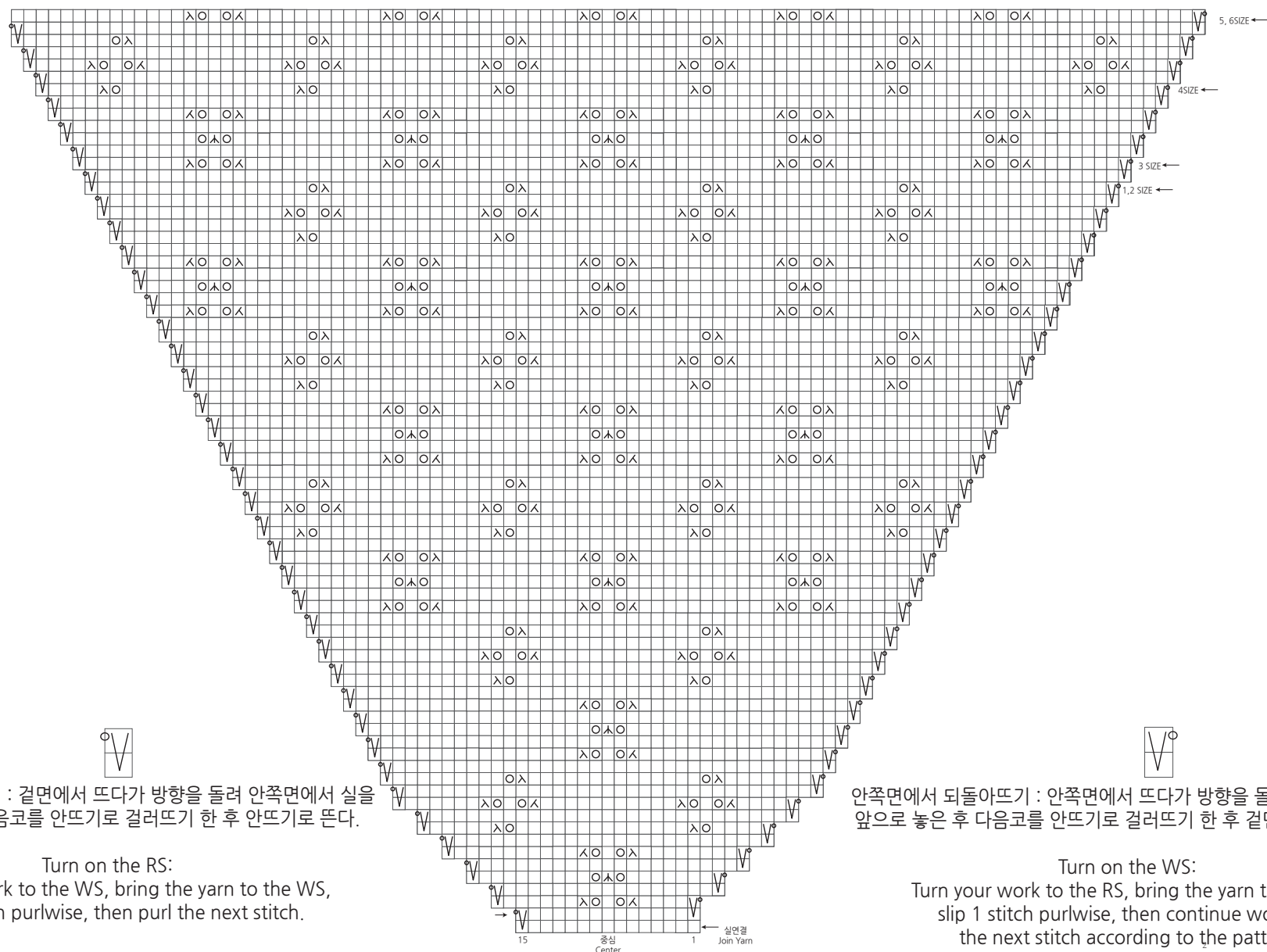
BonBon cardi

• Size 5, 6 암홀아래 차트 / UNDERARM (JOIN FRONT & BACK)



BonBon cardi

• 소매산 되돌아뜨기 차트 / SLEEVE(Short rows for sleeve cap)



겉면에서 되돌아뜨기 : 겉면에서 뜨다가 방향을 돌려 안쪽면에서 실을 앞으로 놓은 후 다음코를 안뜨기로 걸러뜨기 한 후 안뜨기로 뜬다.

Turn on the RS:
Turn your work to the WS, bring the yarn to the WS,
slip 1 stitch purlwise, then purl the next stitch.



안쪽면에서 되돌아뜨기 : 안쪽면에서 뜨다가 방향을 돌려 겉면에서 실을 앞으로 놓은 후 다음코를 안뜨기로 걸러뜨기 한 후 겉면 패턴대로 뜬다.

Turn on the WS:
Turn your work to the RS, bring the yarn to the RS,
slip 1 stitch purlwise, then continue working
the next stitch according to the pattern.

BonBon Cardi

