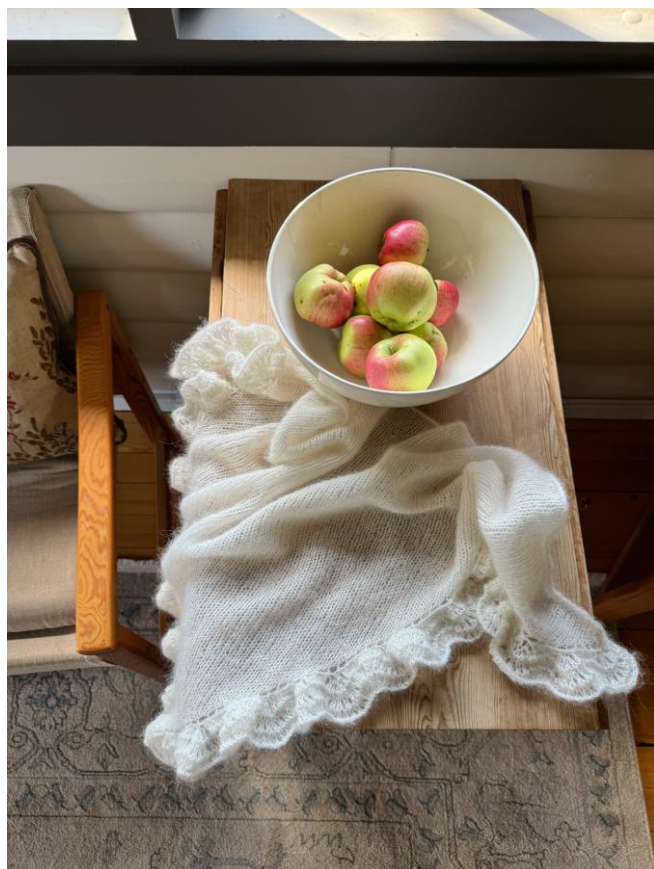


Betty Scarf

By Milotté Patterns



Sizes:	Small Betty, Large Betty
Wingspan:	approx. 117 (140) cm (incl. wave edge)
Depth:	approx. 58 (70) cm
Gauge:	needle 5 mm: 20 m = 10 m
Recommended needles:	5 mm circular needle (80 cm), small crochet hook, approx. 3 mm (for picking up stitches)
Yarn Suggestions:	Alternative 1: 100-125 (125-150) g Tynn silk mohair from Sandnes yarn Alternative 2: 100-125 (125-150) g Tilia from Filcolana

The shawl in the photo is Betty Scarf in size Small, knitted with the standard wave edge in yarn alternative 1 (Natural 1012).

PATTERN

Betty Scarf is worked flat in stockinette stitch with steady side increases, growing into a triangle. When the shawl reaches the desired length, bind off, then pick up stitches along the edges and work a softly undulating wave ruffle to frame the piece. In fine silk mohair, Betty Scarf is light, airy and elegant- a timeless layer and a beautiful gift.

SHAWL

Work back and forth on a 5 mm circular needle (80 cm), yarn held double.

Cast on 5 sts on the needle.

1. Row 1 (WS): Purl
2. Row 2 (RS): K1, yo, knit to last st, yo, k1

Repeat the 2 rows a total of 70 (85) times, or until desired length. You should then have 145 (175) sts on the needle. Bind off loosely.

Tip: Use 1-2 needle sizes larger for the bind-off to keep the edge flat and prevent tightening. The top edge (bind-off edge) will then measure approx. 90 (110) cm. Block and shape the shawl before picking up stitches for the wavy edging.

BLOCKING

Before blocking, the top edge (cast-off edge) measures approx. 90 (110) cm, and the slanted edges of the shawl (side edges) approx. 75 (92) cm. After thorough steaming and stretching, shape to approx. 107 (130) cm along the top edge and 80 (97) cm along each slanted side.

Note: Measurements are approximate and may vary depending on gauge.

WAVE EDGE (FEATHER AND FAN PATTERN)

With a small crochet hook (3 mm), pick up stitches along the slanted sides of the shawl, from one end of the top edge, down to the tip, and up to the other end of the top edge. Pick up approx. 288 (350) sts. That means picking up 1 st in each st along the edge. Break the yarn.

From the right side of the work, increase as follows: **Knit alternately 2 sts into 1 st and 3 sts into 1 st**. Repeat from **-** across the row. This gives approx. 720 (875) sts. Adjust if necessary so that you end with approx. 714 (867) sts, or a stitch count divisible by 17, so the pattern repeat works. Break the yarn, and then begin the feather and fan pattern from the right side.

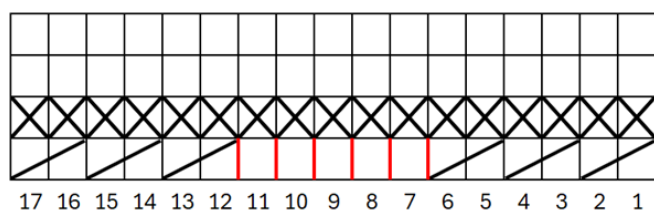
Wave edge with calmer waves: For a less wavy edge, you can pick up 2 sts in each stitch along the edge. You will then have approx. 576 (700) sts, which are adjusted to 578 (697) sts, so the pattern works in 17. Begin the feather and fan pattern:

Start as follows (The pattern is also described in chart A):

1. Row: (RS): *K2tog three times, yo, k1, yo, k1, yo, k1, yo, k1, yo, k1, yo, k2tog three times* repeat from *-* across the row
2. Row: (WS): Knit all sts (they will appear as purl on the RS)
3. Row: Knit all sts
4. Row: Purl all sts

Repeat these 4 rows across all sts. Work the above 4 rows twice (8 rows). Then work 1 row and bind off all sts on the needle. Weave in ends.

CHART A



LEGEND FOR CHART



= Knit on the right side, purl on the wrong side.



= Purl on the right side, knit on the wrong



= Knit 2 together.



= Make a yarn over between two stitches (this creates the hole).

See video on YouTube

How to knit the feather and fan pattern:

<https://www.youtube.com/watch?v=BbwPPhvP2hk>

ABBREVIATIONS

k	knit
p	Purl
K2tog	right – leaning decrease; knit two stitches together
Sts	Stitches
dpn	double pointed needle
RS	Right side of your work
WS	Wrong side of your work
yo	yarn over

www.milotte.no // Instagram: @milottebyvic

The pattern is for personal use only. It may not be copied, resold, or distributed. Share your version of the Betty scarf on Instagram!