



AUSTER

Men's Cabled Pullover

BROOKLYN TWEED

AUSTER

Overview



DESIGNER

Michele Wang

New York, New York

SKILL LEVEL



Intermediate

PATTERN VERSION

1.0

Released 9.14.16

SHARE

#AusterPullover

We love seeing your progress!

We work hard to ensure our patterns are precise, thorough, and thoughtfully considered. If you get stuck, need help, or think you may have found an error in the pattern and want our technical team to check it out, please drop us a note at support@brooklyntweed.com.

Spec Sheet**MATERIALS****Brooklyn Tweed *Shelter* (100% American Targhee-Columbia Wool)**

11 (12, 13, 14, 15, 16) skeins (140 yards/50 grams) — sample photographed in color *Artifact*
 1540 (1640, 1700, 1835, 2065, 2195) total yards of worsted weight yarn needed

**GAUGE**

18 stitches & 28 rows = 4" in reverse stockinette stitch with Size A needle(s), after blocking
 24 stitches & 27 rows = 4" in Vine Chart pattern with Size A needle(s), after blocking
 One 22-stitch repeat from Vine Chart measures approximately 3¾" wide with Size A needle(s), after blocking

**NEEDLES****Size A (for Main Fabric)**

One 32" circular needle in size needed to obtain gauge listed
 Suggested Size: 5 mm (US 8)

Size B (for Ribbing)

One each 16" and 32" circular needles, two sizes smaller than Size A
 Suggested Size: 4 mm (US 6)

Size C (optional; for Sleeve Tubular Cast On only)

One 32" circular needle, one size smaller than Size B
 Suggested Size: 3¾ mm (US 5)

Note: If you have adjusted the needle size to obtain the correct gauge, it may or may not be necessary to make a matching adjustment to the needle size used for Tubular Cast On due to variance in individual work. You may wish to test your chosen cast-on method on your swatch.

**DIMENSIONS**

39¾ (43¼, 47¼, 50¾, 54¾, 57¾)" [101 (110, 120, 129, 139, 146.5) cm] circumference at chest
 Intended Ease: + 4–5" [10–12.5 cm]
 Sample shown is size 43¾" [110 cm] with 2¼" [5.5 cm] ease on model

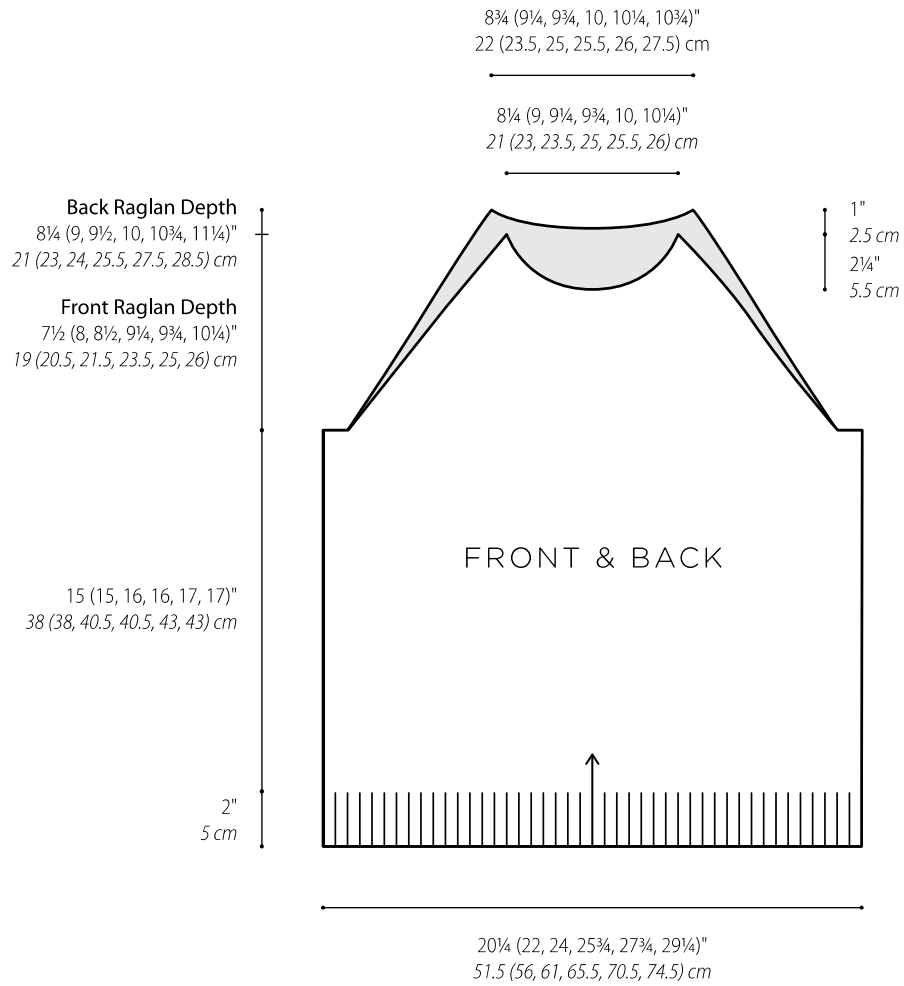
**TOOLS**

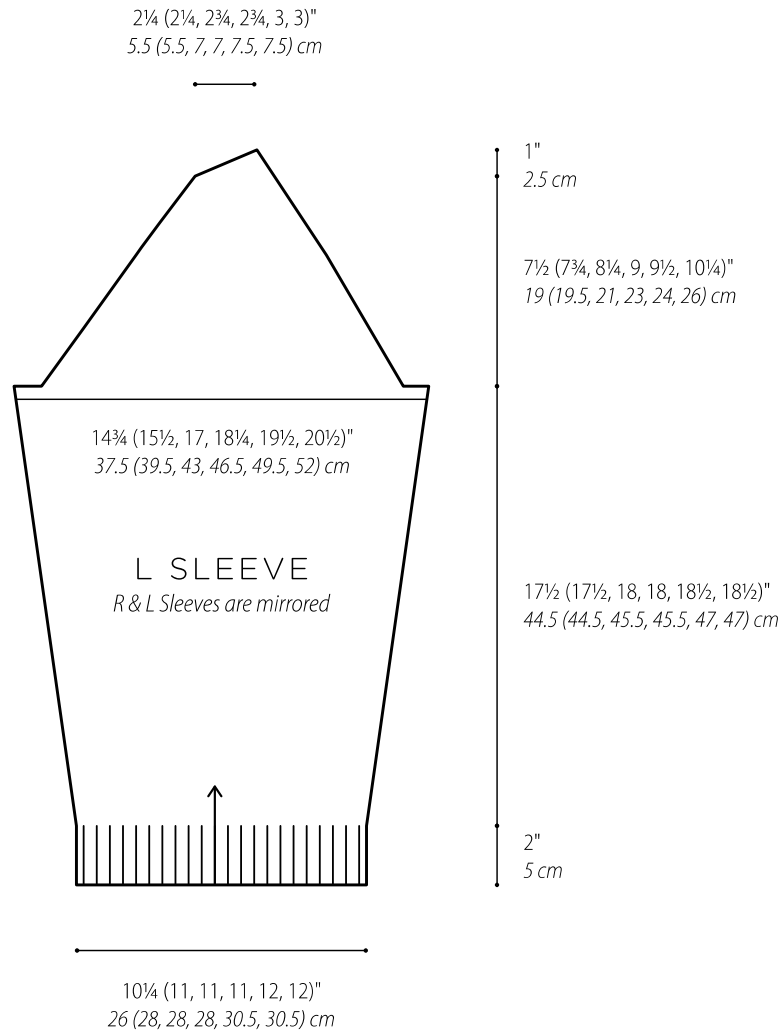
Stitch markers, removable markers, stitch holders or waste yarn, cable needle (CN), blunt tapestry needle, T-pins (optional), a small amount of sock yarn in a similar color for seaming (see *Construction Notes*)

If working Tubular Cast On, you will also require smooth waste yarn (sport- or DK-weight cotton, silk, or bamboo yarn) and Size C needle. You may use another cast on if desired, omitting these tools.

**SKILL LEVEL****Intermediate**

Required Techniques: Cast on of knitter's choice, increasing and decreasing, picking up stitches, knitting in the round, reading charts, cable knitting, binding off in pattern
 Optional Techniques: 2x2 Tubular Cast On, 2x2 Tubular Bind Off, Kitchener Stitch, Sloped Bind Off

Schematic: Front & Back

Schematic



AUSTER

Auster is a handsome modified raglan with a branching cable motif layered over a tracery of diamonds. The front and back are patterned with allover texture standing proud against reverse stockinette sleeves. This straight-bodied crewneck in Shelter is designed for a classic fit with 4–5' of ease, just right for wearing over buttondowns during the cold months. Choose a pale neutral to emphasize the cable motifs; for the guy who prefers an understated look, pick a dark shade like Artifact (shown here), Soot, or even Cast Iron.

CONSTRUCTION NOTES

- The pieces are worked separately and sewn together. The neckband is picked up and worked circularly after garment assembly.
- A circular needle is used to accommodate the large number of stitches.
- Where {knit 1} appears in braces, it indicates a selvedge stitch.
- Read RS (odd-numbered) chart rows from right to left; read WS (even-numbered) chart rows from left to right.
- The chart includes left and right cable crosses (LC and RC) where knit stitches are crossed over knit stitches, and left and right cable twists (LT and RT) where knit stitches are crossed over purl stitches.
- When working shaping, if there are not enough stitches to work a cable, work the affected stitches in knit or purl as established.
- Slip markers as they are encountered.
- Because of the softly spun nature of this yarn, some knitters prefer to do their seaming with a firmly spun yarn, such as sock yarn, in a similar color; alternatively, you may add twist into the yarn (in the same direction as the yarn is plied) as you seam to add tensile strength.

STITCH PATTERNS

Flat 2x2 Ribbing

Multiple of 4 stitches + 2; 2-row repeat

Row 1 (RS): {Knit 1}, knit 1, *purl 2, knit 2; repeat from * to last 4 stitches, purl 2, knit 1, {knit 1}.

Row 2 (WS): {Knit 1}, purl 1, *knit 2, purl 2; repeat from * to last 4 stitches, knit 2, purl 1, {knit 1}.

Repeat Rows 1 & 2 for pattern.

Circular 2x2 Ribbing

Multiple of 4 stitches; 1-round repeat

Round 1: Knit 1, purl 2, *knit 2, purl 2; repeat from * to last stitch, knit 1.

Repeat Round 1 for pattern.

BACK

With Size B 32" circular needle (suggested size: 4 mm/US 6), cast on 122 (132, 144, 154, 166, 176) stitches using the Long-Tail Cast On. Do not join; work back and forth in rows.

WORK RIBBING

Next Row (WS): {Knit 1}, purl 3 (1, 0, 1, 3, 1), [knit 2, purl 2] 0 (2, 1, 2, 0, 2) time(s), knit 1 (0, 0, 0, 1, 0), [purl 2, knit 1, purl 2, knit 1, purl 1, knit 2, purl 2] 0 (0, 1, 1, 0, 0) time(s), *knit 2, purl 2, knit 2, purl 1, knit 1, [purl 2, knit 1] twice, purl 2, knit 1, purl 1, knit 2, purl 2; repeat from * 4 (4, 4, 4, 6, 6) more times, knit 2, [purl 2, knit 2, purl 1, knit 1, purl 2, knit 1, purl 2] 0 (0, 1, 1, 0, 0) time(s), knit 1 (0, 0, 0, 1, 0), [purl 2, knit 2] 0 (2, 1, 2, 0, 2) time(s), purl 3 (1, 0, 1, 3, 1), {knit 1}.

Next Row (RS): {Knit 1}, knit 3 (1, 0, 1, 3, 1), [purl 2, knit 2] 0 (2, 1, 2, 0, 2) time(s), purl 1 (0, 0, 0, 1, 0), [knit 2, purl 1, knit 2, purl 1, knit 1, purl 2, knit 2] 0 (0, 1, 1, 0, 0) time(s), *purl 2, knit 2, purl 2, knit 1, purl 1, [knit 2, purl 1] twice, knit 2, purl 1, knit 1, purl 2, knit 2; repeat from * 4 (4, 4, 4, 6, 6) more times, purl 2, [knit 2, purl 2, knit 1, purl 1, knit 2, purl 1, knit 2] 0 (0, 1, 1, 0, 0) time(s), purl 1 (0, 0, 0, 1, 0), [knit 2, purl 2] 0 (2, 1, 2, 0, 2) time(s), knit 3 (1, 0, 1, 3, 1), {knit 1}.

Work even in established pattern until piece measures 2" from cast-on edge, ending with a WS row.

MAIN PATTERN

Switch to Size A 32" circular needle (suggested size: 5 mm/US 8).

Next Row (RS): {Knit 1}, work 5 (10, 5, 10, 5, 10) stitches in established rib pattern, place marker, beginning and ending where indicated for your size work Row 1 of Vine Chart over 110 (110, 132, 132, 154, 154) stitches, place marker, work 5 (10, 5, 10, 5, 10) stitches in established rib pattern, {knit 1}.

Next Row (WS): {Knit 1}, work 5 (10, 5, 10, 5, 10) stitches in established rib pattern, slip marker, work Row 2 of Vine Chart over 110 (110, 132, 132, 154, 154) stitches, slip marker, work 5 (10, 5, 10, 5, 10) stitches in established rib pattern, {knit 1}.

Work even in established pattern until piece measures 17 (17, 18, 18, 19, 19)" from cast-on edge, ending with a WS row.

SHAPE RAGLANS

Bind off 5 (6, 7, 8, 9, 10) stitches at the beginning of the next 2 rows. [112 (120, 130, 138, 148, 156) stitches remain]

Raglan Single Decrease Row (RS): {Knit 1}, knit 1, k2tog, work as established to last 4 stitches, SSK, knit 1, {knit 1}. (2 stitches decreased)

Next Row (WS): {Knit 1}, purl 2, work in established pattern to last 3 stitches, purl 2, {knit 1}.

Repeat the Raglan Single Decrease Row every RS row 19 (21, 21, 22, 22, 23) more times.

Upon completion of this section, you will have worked the Raglan Single Decrease Row a total of 20 (22, 22, 23, 23, 24) times; you now have 72 (76, 86, 92, 102, 108) stitches on your needle.

Work 1 row even (WS).

Raglan Double Decrease Row (RS): {Knit 1}, knit 1, FD2-R, work as established to last 6 stitches, FD2-L, knit 1, {knit 1}. (4 stitches decreased)

Next Row (WS): {Knit 1}, purl 3, work in established pattern to last 4 stitches, purl 3, {knit 1}.

Repeat the Raglan Double Decrease Row every RS row 3 (3, 5, 6, 8, 9) more times. [56 (60, 62, 64, 66, 68) stitches remain]

Work 1 row even (WS).

SHAPE NECK

Note: Work as for Binding off Over Cabled Fabrics (see Special Techniques) in this section. Please review Sloped Bind Off (see Special Techniques) before proceeding.

Next Row (RS): {Knit 1}, knit 1, FD2-R, work 8 (10, 11, 12, 13, 14) stitches as established then transfer 12 (14, 15, 16, 17, 18) stitches just worked to stitch holder or waste yarn for right shoulder, bind off center 28 stitches in pattern, work as established to last 6 stitches, FD2-L, knit 1, {knit 1}. [12 (14, 15, 16, 17, 18) stitches remain for left shoulder]

LEFT SHOULDER

Work 1 row even (WS).

At the beginning of RS rows, bind off 5 (6, 7, 7, 8, 8) stitches once, then bind off 5 (6, 6, 7, 7, 8) stitches once, then bind off remaining 2 stitches.

RIGHT SHOULDER

Return 12 (14, 15, 16, 17, 18) held shoulder stitches to Size A needle and rejoin yarn ready to work a WS row.

At the beginning of WS rows, bind off 5 (6, 7, 7, 8, 8) stitches once, then bind off 5 (6, 6, 7, 7, 8) stitches once, then bind off remaining 2 stitches.

FRONT

Work as for back to beginning of “Shape Raglans” section.
[122 (132, 144, 154, 166, 176) stitches now on needle]

SHAPE RAGLANS

Bind off 5 (6, 7, 8, 9, 10) stitches at the beginning of the next 2 rows. [112 (120, 130, 138, 148, 156) stitches remain]

Raglan Single Decrease Row (RS): {Knit 1}, knit 1, k2tog, work as established to last 4 stitches, SSK, knit 1, {knit 1}. (2 stitches decreased)

Next Row (WS): {Knit 1}, purl 2, work in established pattern to last 3 stitches, purl 2, {knit 1}.

Repeat the Raglan Single Decrease Row every RS row 15 (17, 18, 19, 19, 20) more times.

Upon completion of this section, you will have worked the Raglan Single Decrease Row a total of 16 (18, 19, 20, 20, 21) times; you now have 80 (84, 92, 98, 108, 114) stitches on your needle.

Sizes 47¼, 50¾, 54¾, & 57¾" Only:

Work 1 row even (WS).

Raglan Double Decrease Row (RS): {Knit 1}, knit 1, FD2-R, work as established to last 6 stitches, FD2-L, knit 1, {knit 1}. (4 stitches decreased)

Next Row (WS): {Knit 1}, purl 3, work in established pattern to last 4 stitches, purl 3, {knit 1}.

Repeat the Raglan Double Decrease Row every RS row – (–, 0, 1, 3, 4) more time(s). [– (–, 88, 90, 92, 94) stitches remain]

All Sizes Resume:

Work 1 row even (WS).

SHAPE NECK

Note: The remaining raglan shaping is worked at the same time as the neck shaping. Work as for Binding off Over Cabled Fabrics and use the Sloped Bind Off for best results.

Sizes 39¾ & 43¾" Only:

Row 1 (RS): {Knit 1}, knit 1, k2tog, work 24 (25, –, –, –, –) stitches as established, join a new ball of yarn and bind off center 24 (26, –, –, –, –) stitches, work as established to last 4 stitches, SSK, knit 1, {knit 1}. [27 (28, –, –, –, –) stitches remain on each side]

Sizes 47¼, 50¾, 54¾, & 57¾" Only:

Row 1 (RS): {Knit 1}, knit 1, FD2-R, work – (–, 25, 25, 26, 27) stitches as established, join a new ball of yarn and bind off center – (–, 26, 28, 28, 28) stitches, work as established to last 6 stitches, FD2-L, knit 1, {knit 1}. [– (–, 29, 29, 30, 31) stitches remain on each side]

All Sizes Resume:

Both sides will be worked at once from separate balls of yarn from this point forward. Make sure not to cross or twist yarns when switching to second side.

Row 2 (WS): Work as established to neck edge; on second side with other ball of yarn, bind off 3 (4, 5, 5, 5, 6) stitches, work as established to end.

Row 3: {Knit 1}, knit 1, FD2-R, work as established to neck edge; on second side with other ball of yarn, bind off 3 (4, 5, 5, 5, 6) stitches, work as established to last 6 stitches, FD2-L, knit 1, {knit 1}. [22 (22, 22, 22, 23, 23) stitches remain on each side]

Row 4: Work as established to neck edge; on second side with other ball of yarn, bind off 2 (2, 2, 2, 3, 3) stitches, work as established to end.

Row 5: {Knit 1}, knit 1, FD2-R, work as established to neck edge; on second side with other ball of yarn, bind off 2 (2, 2, 2, 3, 3) stitches, work as established to last 6 stitches, FD2-L, knit 1, {knit 1}. [18 stitches remain on each side]

Row 6: Work as established to neck edge; on second side with other ball of yarn, bind off 2 stitches, work as established to end.

Row 7: {Knit 1}, knit 1, FD2-R, work as established to neck edge; on second side with other ball of yarn, bind off 2 stitches, work as established to last 6 stitches, FD2-L, knit 1, {knit 1}. [14 stitches remain on each side]

Row 8: Work as established to neck edge; on second side with other ball of yarn, bind off 1 stitch, work as established to end.

Row 9: {Knit 1}, knit 1, FD2-R, work as established to neck edge; on second side with other ball of yarn, bind off 1 stitch, work as established to last 6 stitches, FD2-L, knit 1, {knit 1}. [11 stitches remain on each side]

Rows 10–13: Repeat Rows 8 & 9 twice. [5 stitches remain on each side]



Row 14: Work as established to neck edge; on second side with other ball of yarn, bind off 1 stitch, work as established to end.

Row 15: K3tog, knit 1; on second side with other ball of yarn, slip 1 knitwise, SSSK, pass the slipped stitch over the decrease. [2 stitches remain on each side]

Row 16: Purl 2; on second side with other ball of yarn, bind off remaining 2 stitches.

Bind off remaining 2 stitches on right side.

LEFT SLEEVE

2X2 TUBULAR CAST ON

If you do not wish to work a Tubular Cast On, cast on 46 (50, 50, 50, 54, 54) stitches using Size B 32" circular needle, working yarn and your preferred method, then proceed to the "Work Ribbing" section of piece. Do not join; work back and forth in rows.

With Size C 32" circular needle (suggested size: 3¾ mm/US 5) and waste yarn, loosely cast on 24 (26, 26, 26, 28, 28) stitches using your preferred method.

Switch to working yarn for Foundation Row, then work Rows 1–6 as directed in *Special Techniques*; you will have 46 (50, 50, 50, 54, 54) stitches on your needle after Row 1.

Switch to Size B 32" circular needle.

WORK RIBBING

Begin Flat 2x2 Ribbing (see *Stitch Patterns*); work even until piece measures 2" from cast-on edge, ending with a WS row.

MAIN PATTERN

Switch to Size A 32" circular needle.

Next Row (RS): {Knit 1}, purl to last stitch, {knit 1}.

Next Row (WS): {Knit 1}, knit to last stitch, {knit 1}.

Work even in reverse stockinette stitch with garter stitch selvages for 8 more rows, ending with a WS row.

SHAPE SLEEVE

Sleeve Increase Row (RS): {Knit 1}, purl 3, M1P, purl to last 4 stitches, M1P, purl 3, {knit 1}. (2 stitches increased)

Repeat the Sleeve Increase Row every 10th (10th, 8th, 8th, 8th, 6th) row 9 (9, 11, 2, 1, 13) more time(s), then every 0 (0, 6th, 6th, 6th, 4th) row 0 (0, 1, 13, 15, 5) time(s).

Upon completion of this section, you will have worked the Sleeve Increase Row a total of 10 (10, 13, 16, 17, 19) times; you now have 66 (70, 76, 82, 88, 92) stitches on your needle.

Work even until piece measures 19½ (19½, 20, 20, 20½, 20½)" from cast-on edge, ending with a WS row.

SHAPE RAGLANS

Bind off 5 (6, 7, 8, 9, 10) stitches at the beginning of the next 2 rows. [56 (58, 62, 66, 70, 72) stitches remain]

Work 2 rows even.

Raglan Decrease Row (RS): {Knit 1}, purl 1, p2tog, work as established to last 4 stitches, SSP, purl 1, {knit 1}. (2 stitches decreased)

Repeat the Raglan Decrease Row every 4th row 2 (2, 2, 3, 4, 5) more times, then every RS row 20 (21, 22, 23, 23, 23) times.

Upon completion of this section, you will have worked the Raglan Decrease Row a total of 23 (24, 25, 27, 28, 29) times; you now have 10 (10, 12, 12, 14, 14) stitches on your needle.



SHAPE TOP

Note: Use the Sloped Bind Off in this section for best results.

Bind off 2 (2, 3, 3, 3, 3) stitches at the beginning of the next 2 WS rows, then bind off 3 (3, 3, 3, 4, 4) stitches at the beginning of the following WS row, then bind off remaining 3 (3, 3, 3, 4, 4) stitches on the next WS row.

RIGHT SLEEVE

Work as for left sleeve to the beginning of the “Shape Top” section.

SHAPE TOP

Note: Use the Sloped Bind Off in this section for best results.

Work 1 row even (WS).

Bind off 2 (2, 3, 3, 3, 3) stitches at the beginning of the next 2 RS rows, then bind off 3 (3, 3, 3, 4, 4) stitches at the beginning of the following RS row, then bind off remaining 3 (3, 3, 3, 4, 4) stitches on the next RS row.

FINISHING

Wet-block pieces to schematic measurements (see *Special Techniques*). With matching sock yarn threaded on a tapestry needle (see *Construction Notes*), sew raglan seams, taking care to place right and left sleeves correctly. Sew sleeve and side seams.

NECKBAND

With Size B 16" circular needle, RS facing, and beginning at back right raglan, pick up and knit 40 (44, 46, 46, 48) stitches evenly along back neck, 8 (8, 10, 10, 12, 12) stitches along top of left sleeve, 48 (52, 54, 58, 58, 60) stitches evenly along front neck, and 8 (8, 10, 10, 12, 12) stitches along top of right sleeve. Place marker for BOR and join for working in the round. [104 (112, 120, 124, 128, 132) stitches now on needle]

Begin Circular 2x2 Ribbing (see *Stitch Patterns*); work even until neckband measures 1" from pick-up round.

If you do not wish to use a Tubular Bind Off, bind off all stitches in pattern using your preferred method.

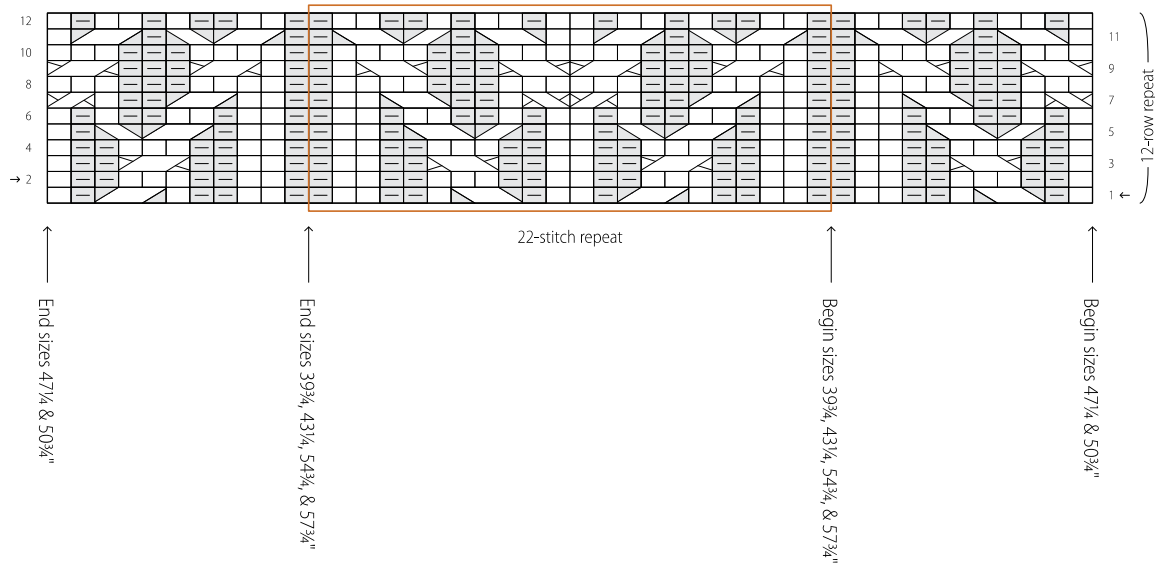
2X2 TUBULAR BIND OFF

Tubular Round 1: Knit 1, slip 2 purlwise wyif, *knit 2, slip 2 purlwise wyif; repeat from * to last stitch, knit 1.

Tubular Round 2: Slip 1 purlwise wyib, purl 2, *slip 2 purlwise wyib, purl 2; repeat from * to last stitch, slip 1 purlwise wyib.

Using current Size B needle and spare Size B needle, bind off all stitches using the 2x2 Tubular Bind Off (see *Special Techniques*), with RS facing for dividing stitches.

Weave in any remaining ends invisibly on the WS of fabric. Steam seams and neckband or wet-block entire garment again.

Vine Chart**Knit**

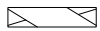
Knit stitch on RS; purl stitch on WS

**1/1 LC (Left Cross)**

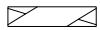
Slip 1 stitch to CN and hold in front, knit 1 stitch from L needle, knit stitch from CN

**1/1 RC (Right Cross)**

Slip 1 stitch to CN and hold in back, knit 1 stitch from L needle, knit stitch from CN

**2/1 LC**

Slip 2 stitches to CN and hold in front, knit 1 stitch from L needle, knit 2 stitches from CN

**2/1 RC**

Slip 1 stitch to CN and hold in back, knit 2 stitches from L needle, knit stitch from CN

**Repeat**

Bracketed motif is repeated more than once

**Purl**

Purl stitch on RS; knit stitch on WS

**1/1 LT (Left Twist)**

Slip 1 stitch to CN and hold in front, purl 1 stitch from L needle, knit stitch from CN

**1/1 RT (Right Twist)**

Slip 1 stitch to CN and hold in back, knit 1 stitch from L needle, purl stitch from CN

**2/1 LT**

Slip 2 stitches to CN and hold in front, purl 1 stitch from L needle, knit 2 stitches from CN

**2/1 RT**

Slip 1 stitch to CN and hold in back, knit 2 stitches from L needle, purl stitch from CN

Special Techniques

2x2 Tubular Cast On

Using Size C needle (suggested size: 3¾ mm/US 5), waste yarn, and your preferred cast-on method, loosely cast on the number of stitches directed for piece.

Foundation Row (WS): With working yarn, purl all stitches in row. Note that this row is worked directly into your waste yarn stitches.

Row 1 (Increase Row; RS): Knit 1, [Inc + K2tog] (see *Abbreviations*), *insert your L needle tip from front to back under the running thread between the stitch you just worked and the next stitch on L needle, then purl this stitch (increasing one), knit 1; repeat from * to end.

Row 2 (Tubular Row; WS): {Knit 1}, knit 1, *slip 1 purlwise with yarn in front, knit 1; repeat from * to last 2 stitches, slip 1 purlwise with yarn in front, {knit 1}.

Row 3 (Tubular Row; RS): {Knit 1}, *knit 1, slip 1 purlwise with yarn in front; repeat from * to last stitch, {knit 1}.

Row 4 (Tubular Row; WS): Repeat Row 2.

Up to this point, your stitches have been worked in a 1x1 ribbing arrangement (with a single-stitch selvage at either side). Before working the next row, you will rearrange your stitches into a 2x2 ribbing arrangement. You will not use your working yarn when you do the rearrangement. You may use a cable needle (CN) to make the rearranging of stitches easier if you wish. *Note that all stitches in this section are slipped purlwise.*

Rearrange Stitches for 2x2 Ribbing (RS facing; Non-working): Slip 1, *slip 2 stitches (1 knit stitch, 1 purl stitch) from L to R needle, slip next stitch (a knit stitch) onto CN and hold in front, slip 1 (a purl stitch) from L to R needle, slip 1 from CN to R needle; repeat from * to last stitch, slip 1. Now slide your row of stitches across your circular needle so that your working yarn is once again on the L needle, ready to work a RS row.

Row 5 (Tubular Row; RS): Resuming with working yarn, {Knit 1}, *knit 1, slip 2 purlwise with yarn in front, knit 1; repeat from * to last stitch, {knit 1}.

Row 6 (Tubular Row; WS): {Knit 1}, *slip 1 purlwise with yarn in front, knit 2, slip 1 purlwise with yarn in front; repeat from * to last stitch, {knit 1}.

You have now completed your Tubular Rows and will begin working the 2x2 ribbing. You may remove the waste yarn from your tubular edge at any time by carefully snipping it with scissors and unraveling it; however, it is recommended that you wait until you have worked 1-2" of fabric before removing. Take care during this process to avoid accidentally cutting any of your working yarn.

Special Techniques (continued)

Sloped Bind Off

Step 1: Work the first bind off rows at the garment edges as usual.

Step 2: One row before the next bind off row, work to the last stitch of the row, turn.

Step 3: Slip the first stitch from the L needle purlwise, pass the unworked stitch of the previous row over the slipped stitch (the first stitch is bound off). Bind off the remaining stitches as usual.

Binding Off Over Cabled Fabrics

To prevent edge flaring when binding off over cabling, bind off by knitting 2 stitches together out of every 4 stitches over cables. First, place a removable marker after the last stitch that is to be bound off so that you do not lose count while decreasing and binding off at the same time. Then, knit 1, *k2tog (or p2tog to keep in pattern), pass previous stitch on R needle over stitch just worked, [knit 1 (or purl 1), pass previous stitch on R needle over stitch just worked] twice; repeat from * until the stitch you marked has been bound off.

2x2 Tubular Bind Off

As the piece faces you, the first stitch should be a knit stitch, followed by two purl stitches, then two knit stitches.

Divide knit and purl stitches:

Using two needles, transfer stitches as follows:

Slip first (knit) stitch to front needle, *slip 2 purl stitches to back needle, slip 2 knit stitches to front needle; repeat from * to last 3 stitches, slip 2 purl stitches to back needle, slip last (knit) stitch to front needle. You now have an equal number of stitches on front and back needles.

Proceed as for Kitchener Stitch (following), to bind off the stitches by grafting them together.

Kitchener Stitch (Grafting)

Kitchener Stitch is used to sew live stitches together in a way that mimics a row of knitting. Pieces to be joined are live on needles, with RSs facing out and both needle tips pointing to the right. Use a length of yarn approximately 4 times the length of the finished seam, attached to the R edge of the Back knitted piece (use the yarn the piece was knitted with, or attach a new length of yarn). Thread the yarn onto a blunt tapestry needle and follow the instructions below, working from right to left (note that you will work into each stitch twice):

Step 1: Insert tapestry needle into first stitch on Front Needle as if to purl; pull yarn through, but do not slip this stitch from needle.

Step 2: Insert tapestry needle into first stitch on Back Needle as if to knit; pull yarn through, but do not slip this stitch from needle.

*Special Techniques (continued)***Kitchener Stitch (Grafting)**
(continued)

Step 3: Insert tapestry needle into first stitch on Front Needle as if to knit, slipping this stitch off the needle. Insert tapestry needle into next stitch on Front Needle as if to purl and pull yarn through this stitch, tugging it gently.

Step 4: Insert tapestry needle into first stitch on Back Needle as if to purl, slipping this stitch off the needle. Insert tapestry needle into next stitch on Back Needle as if to knit and pull yarn through this stitch, tugging it gently.

Repeat steps 3 and 4 until a single stitch remains on each needle, adjusting the tension of the sewing yarn every few stitches so that it mimics the tension of the knitting. To finish, insert tapestry needle into final stitch on Front Needle as if to knit, slipping it off of needle. Now, insert tapestry needle into final stitch on Back Needle as if to purl, slipping it off of needle. Pull the yarn through and fasten off gently so as not to distort the stitches.

Wet Blocking

Fill a sink or basin with warm water and a small amount of delicate dish soap or rinseless wool wash. Submerge fabric in water, gently squeezing out any air bubbles so that the piece can remain under water without being held there. Soak work for 30 minutes, allowing fabric to become completely saturated.

Drain the sink and remove work. If you have used dish soap (rather than rinseless wool wash), you will want to fill the sink again once or twice to rinse the soap from your fabric. Never place knitting directly under running water.

Squeeze out excess water from your work, taking care not to twist or wring fabric. Roll your fabric between two clean bath towels “burrito style” and firmly press towel roll. This will aid in removing moisture from the knitted piece. Remove piece from towels – your fabric should now feel damp but not saturated.

Pin pieces in place on a blocking board or other appropriate surface, using instructed dimensions. Use as many T-pins as required to block piece into desired shape. Allow fabric to air dry completely before removing.

Abbreviations

[INC + K2TOG]	Used during Tubular Cast On: Pick up the running thread between stitch just worked and the next stitch on L needle and place on L needle, then knit it together with next stitch on L needle. You have picked up a stitch and then decreased it immediately to produce a secure edge on the selvedge of Tubular Cast On.
K2TOG	Knit 2 Together: Knit two stitches on L needle together. (1 stitch decreased; leans right)
K3TOG	Knit 3 Together: Knit three stitches on L needle together. (2 stitches decreased; leans right)
SSK	Slip, Slip, Knit (modified): Slip 1 stitch knitwise from L to R needle, replace stitch on L needle in new orientation then knit two stitches together through the back loops. (1 stitch decreased; leans left)
SSSK	Slip, Slip, Slip, Knit (modified): Slip 1 stitch knitwise from L to R needle, replace stitch on L needle in new orientation then knit three stitches together through the back loops. (2 stitches decreased; leans left)
P2TOG	Purl 2 Together: Purl two stitches on L needle together. (1 stitch decreased; leans right)
SSP	Slip, Slip, Purl: Slip 2 stitches knitwise, one at a time, transfer stitches back to L needle in their new orientation, then purl the stitches together through the back loops. (1 stitch decreased; leans left)
FD2-L	Fashioned Decrease Left – Double: Place next 2 stitches onto CN and hold CN parallel to and in front of L needle. *Insert R needle into first stitch on CN and first stitch on L needle, knit these 2 stitches together; repeat from * once. (2 stitches decreased; leans left)
FD2-R	Fashioned Decrease Right – Double: Place next 2 stitches onto CN and hold CN parallel to and behind L needle. *Insert R needle into first stitch on L needle and first stitch on CN, knit these 2 stitches together; repeat from * once. (2 stitches decreased; leans right)
M1P	Make 1 Purl: With L needle tip, pick up the running thread between stitch just worked and first stitch on L needle from back to front. Purl the running thread through the front loop. (1 stitch increased)
WYIB	With Yarn in Back
WYIF	With Yarn in Front
CN	Cable Needle

Abbreviations (continued)

BOR	Beginning of Round
RS	Right Side: The public side of the knitted fabric, i.e. the fabric that will be visible when garment is worn. In projects with reversible fabrics, RS will be assigned specifically at the beginning of the pattern.
WS	Wrong Side: The non-public side of the knitted fabric, i.e. the fabric that will not be visible when garment is worn. In projects with reversible fabrics, WS will be assigned specifically at the beginning of the pattern.
L	Left: Used in technique instructions to indicate which of your two working needles is being used.
R	Right: Used in technique instructions to indicate which of your two working needles is being used.