



# Audria Shawl



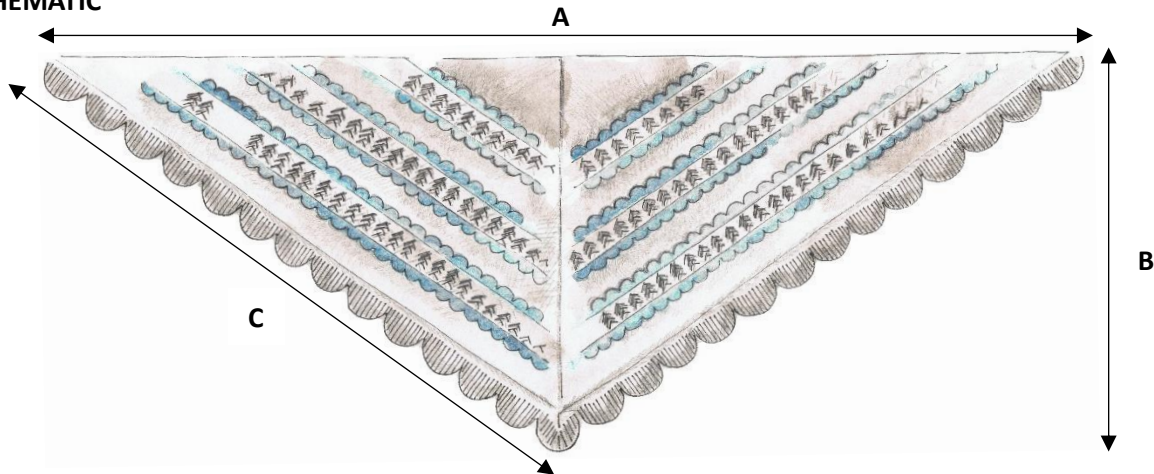
Audria Shawl is a soft and sweet hug on a breezy evening. Inspired by the simplicity of rounded flower petals and light, foggy haze of summertime dusk hours, the shawl reflects it in its minimal textures and muted contrasts.

## PATTERN NOTES:

Audria is a symmetrical shallow triangular shawl knit top down with Garter Tab Cast-On and regular increases along the edges and central spine to obtain its final shape. It features smooth stockinette sections along with short and sweet sprout-like lace motif sections in MC enclosed on both sides by scalloped petal rows in stranded colourwork worked on both sides of the project. The scalloped petal end ribbing is shaped with German Short Rows and is bound off in Stretchy Ribbing Bind-Off to ensure a controlled stretch.

Please, watch the videos in Special Techniques Section on Page 3 and read Tips & Suggestions section on Page 12 before starting the project.

## SCHEMATIC



## SIZE:

A: Wingspan - 82" (208 cm)

B: Depth - 31" (78 cm)

C: Side Edge - 53" (135 cm)

## YARN & YARDAGE:

*The following two yarns are held together throughout the project.*

Biches et Bûches Le Petit Lambswool  
[100% lambswool; 270 yards / 248 m, 50g].

Biches et Bûches Le Petit Silk Mohair  
[30% mulberry silk, 70% super kid mohair; 232 yards / 212 m, 25g].

## MC:

Light fingering weight yarn:

Le Petit Lambswool in Light Grey, 960 yds (878 m) – 4 skeins

Lace weight yarn:

Le Petit Silk Mohair in Light Grey, 900 yds (820 m) – 4 skeins

## CC:

Light fingering weight yarn:

Le Petit Lambswool in Blue Grey, 270 yds (248 m) – 1 skein

Lace weight yarn:

Le Petit Silk Mohair in Blue Grey, 330 yds (300 m) – 2 skeins

**NEEDLES:** US 2.5 (3 mm) circulars with 40" (100 cm) cable. *(or size to obtain a close gauge)*

US 3 (3.25 mm) circulars with 40" (100 cm) cable. *(or one size larger than the ones used to obtain a close gauge)*

*Please note, that the needle size is only a suggestion, since the gauge depends on your personal knitting tension.*

**GAUGE:** 20 sts x 29 rows = 4" (10 cm) worked flat in stockinette in smaller size needles and yarns held together after gentle wet blocking.

1.75" (4.5 cm) x 4" (10 cm) = one pattern motif (8 sts wide, 25 rows high) worked flat in larger size needles and yarns held together after gentle wet blocking.

*Due to the generous size of the shawl, gauge is not extremely crucial and having a tighter gauge will still result in a large sample. It is more desirable to have denser than looser fabric to keep the lace motif textured.*

**NOTIONS:** Stitch markers (4 markers to mark the garter edges and central spine, 30 markers to mark individual petals on End Ribbing), tapestry needle, scissors, blocking tools, 93 blocking pins to shape the petal ribbing edge.

## ABBREVIATIONS & STITCH GUIDE

**BO** – bind off  
**CO** – cast on  
**est** - established  
**incr** – increase  
**GSR** – German short row (see Special Techniques)  
**K** – knit  
**Ktbl** – knit through back loop  
**K2tblPO** –right leaning double decrease:  
 Knit 2 sts together through back loops. Return to LH needle. Pass the second st on LH needle over the first st on LH needle (the one you just returned to LH needle). Slip the st onto RH needle.  
**LH** – left hand  
**M** – marker  
**M1L** – make one stitch leaning left  
**M1R** – make one stitch leaning right  
**M1PL** – make one stitch purl leaning left  
**M1PR** – make one stitch purl leaning right  
**P** – Purl  
**patt** - pattern  
**PM** – place marker  
**Ptbl** – purl through back loop  
**Rep** – repeat  
**RH** – right hand  
**RS** – right side  
**SK2PO** – left leaning double decrease:  
 Slip 1 st purlwise. Knit 2 sts together. Pass the slipped stitch over.  
**SM** – slip marker  
**S1 pwise** – Slip 1 st purl-wise  
**st / sts** – stitch / stitches  
**WS** – wrong side  
**YO** – yarn over

## SPECIAL TECHNIQUES

### German Short Rows (GSRs)

GSRs are always worked on the first st of the row following the turn.

Step 1: S11 pwise with yarn in front.

Step 2: Pull the yarn up and tightly over the needle towards back so the two legs of the stitch are revealed on the RS needle. This creates a look of two stitches, but it is to be treated as **one stitch** when resolving the GSRs.

*For video on general overview of GSR shaping in Audria Shawl please follow the link:*

<https://youtu.be/fkGe3szPhRg>

*For video tutorial on RS row GSR technique and shaping specific to the scalloped petal on Audria Shawl please follow the link:*

<https://youtu.be/PZl1S9QUIOE>

*For video tutorial on WS row GSR technique and shaping specific to the scalloped petal on Audria Shawl please follow the link:*

<https://youtu.be/TtSzfQYsjjo>

### Stretchy Ribbing Bind-Off:

(written instructions based on K1tbl. P1. ribbing pattern of Audria Shawl)

Step 1: K2. (this is a Bind-Off starter step and is performed only at the first 2 sts of the project BO)

Step 2: Slip both these sts back to LH needle and knit them together through back loops.

Step 3: K1tbl.

Step 4: Slip both sts back to LH needle and knit them together through back loops.

Step 5: P1.

Step 6: Slip both sts back to LH needle and purl them together.

Repeat Step 3 – Step 6 as many times as necessary.

*For video tutorial on Stretchy Ribbing Bind-Off please follow the link:*

[https://youtu.be/n\\_skRdSo0xM](https://youtu.be/n_skRdSo0xM)



## PATTERN STARTS

### Garter Tab Cast-On:

With MC and smaller size needles, CO 6 sts.

Knit 6 rows.

Turn work 90°, pick up and knit 3 ridge sts.

Turn work 90° again, pick up and knit 6 sts.

You will now have 15 sts on your needles.

### Marker Placement

K6. PM. P1. PM. P1. PM. P1. PM. K6.

## MAIN BODY

### Section 1 – Stockinette

With MC and smaller size needles

**Row 1 (RS):** K6. SM. M1L. K to M. M1R. SM. K1. SM. M1L. K to M. M1R. SM. K6. (19) (4 sts incr)

**Row 2 (WS):** K6. SM. M1PR. P to M. SM. P1. SM. P to M. M1PL. SM. K6. (21) (2 sts incr)

Work Rows 1 – 2 for 20 more times. (141)

### Section 2 – Pattern Motif A

*For fully charted instructions please refer to Chart 1 on Page 10.*

*In colourwork sections CC is a dominant colour. Please always remember to hold it under your MC.*

With MC and CC, and larger size needles

**Rows 1 – 3:** Work the stranded colourwork pattern on both sides of the project as shown in Rows 1 – 3 of Chart 1 on Page 10. (151) Cut MC.

With CC and larger size needles

**Row 4 (WS):** K6. SM. M1PR. P to M. SM. P1. SM. P to M. M1PL. SM. K6. (153)

**Rows 5 (RS):** K6. SM. M1L. K to M. M1R. SM. K1. SM. M1L. K to M. M1R. SM. K6. (157)

**Row 6:** Rep Row 4. (159) Cut CC.

With MC and larger size needles

**Rows 7 (RS):** K6. SM. M1L. K to M. M1R. SM. K1. SM. M1L. K to M. M1R. SM. K6. (163)

**Row 8 (WS):** K6. SM. M1PR. P to M. SM. P1. SM. P to M. M1PL. SM. K6. (165)

**Row 9 (RS):** K6. SM. M1L. [K2tblPO. YO. K1. YO. SK2PO. P1.] Rep [ ] to 4 sts before M. K2tblPO. YO. K1.

M1R. SM. K1. SM. M1L. K1. YO. SK2PO. [P1. K2tblPO. YO. K1. YO. SK2PO.] Rep [ ] to M. M1R. SM. K6. (127)

**Row 10 (WS):** K6. SM. M1PR. K1. [P1. YO. P3. YO. P1. K1.] Rep [ ] to 4 sts before M. P1. YO. P3. SM. P1. SM. P3. YO. P1. [K1. P1. YO. P3. YO. P1.] Rep [ ] to 1 st before M. K1. M1PL. SM. K6. (171)

**Row 11:** K6. SM. M1L. K1. P1. [K7. P1.] Rep [ ] to 5 sts before M. K5. M1R. SM. K1. SM. M1L. K5. [P1. K7.] Rep [ ] to 2 sts before M. P1. K1. M1R. SM. K6. (175)

**Row 12:** K6. SM. M1PR. P2. K1 [P7. K1.] Rep [ ] to 6 sts before M. P6. SM. P1. SM. P6. [K1. P7.] Rep [ ] to 3 sts before M. K1. P2. M1PL. SM. K6. (177)

**Row 13:** K6. SM. M1L. YO. SK2PO. P1. [K2tblPO. YO. K1. YO. SK2PO. P1.] Rep [ ] to 6 sts before M. K2tblPO. YO. K3. M1R. SM. K1. SM. M1L. K3. YO. SK2PO. [P1. K2tblPO. YO. K1. YO. SK2PO.] Rep [ ] to 4 sts before M. P1. K2tblPO. YO. M1R. SM. K6. (137)

**Row 14:** K6. SM. M1PR. P2. YO. P1. K1. [P1. YO. P3. YO. P1. K1.] Rep [ ] to 6 sts before M. P1. YO. P5. SM. P1. SM. P5. YO. P1. [K1. P1. YO. P3. YO. P1.] Rep [ ] to 4 sts before M. K1. P1. YO. P2. M1PL. SM. K6. (183)

**Rows 15:** K6. SM. M1L. K5. P1. [K7. P1.] Rep [ ] to 7 sts before M. K7. M1R. SM. K1. SM. M1L. K7. [P1. K7.] Rep [ ] to 6 sts before M. P1. K5. M1R. SM. K6. (187)

**Row 16:** K6. SM. M1PR. P6. K1. [P7. K1.] Rep [ ] to M. SM. P1. SM. [K1. P7.] Rep [ ] to 7 sts before M. K1. P6. M1PL. SM. K6. (189)

**Row 17:** K6. SM. M1L. [K2tblPO. YO. K1. YO. SK2PO. P1.] Rep [ ] to M. M1R. SM. K1. SM. M1L. [P1. K2tblPO. YO. K1. YO. SK2PO.] Rep [ ] to M. M1R. SM. K6. (145)

**Row 18:** K6. SM. M1PR. K1. [P1. YO. P3. YO. P1. K1.] Rep [ ] to 1 st before M. P1. SM. P1. SM. P1. [K1. P1. YO. P3. YO. P1.] Rep [ ] to 1 st before M. K1. M1PL. SM. K6. (195)

**Row 19:** K6. SM. M1L. K1. P1. [K7. P1.] Rep [ ] to 1 st before M. K1. M1R. SM. K1. SM. M1L. K1. [P1. K7.] Rep [ ] to 2 sts before M. P1. K1. M1R. SM. K6. (199)  
Cut MC.

With CC and larger size needles

**Row 20 (WS):** Rep Row 4. (201)

**Row 21 (RS):** Rep Row 5. (205)

**Row 22:** Rep Row 20. (207)

With CC and MC, and larger size needles

Work in stranded colourwork pattern on both sides of the project as shown in Rows 23 – 25 of Chart 1 on Page 10. (217) Cut CC.

### Section 3 – Stockinette

*This section starts with WS row.*

With MC and smaller size needles

**WS Row:** K6. SM. M1PR. P to M. SM. P1. SM. P to M. M1PL. SM. K6. (219)

**Row 1 (RS):** K6. SM. M1L. K to M. M1R. SM. K1. SM. M1L. K to M. M1R. SM. K6 (223)

**Row 2 (WS):** K6. SM. M1PR. P to M. SM. P1. SM. P to M. M1PL. SM. K6. (225)

Rep Rows 1 – 2 for 3 more times. (243)

**Row 9 (RS):** K6. SM. M1L. K1. M1L. K to M. M1R. SM. K1. SM. M1L. K to 1 st before M. M1R. K1. M1R. SM. K6. (249) (6 sts incr: 4 side increases + 2 central increases)

**Row 10 (WS):** K6. SM. M1PR. P to M. SM. P1. SM. P to M. M1PL. SM. K6. (251)

**Row 11:** K6. SM. M1L. K1. M1L. K to M. SM. K1. SM. K to 1 st before M. M1R. K1. M1R. SM. K6. (255) (4 sts incr: 4 side increases, no central increase)

**Row 12:** K6. SM. M1PR. P to M. SM. P1. SM. P to M. M1PL. SM. K6. (257)

### Section 4 – Pattern Motif B

*For fully charted instructions please refer to Chart 2 on Page 11.*

*In colourwork sections CC is a dominant colour. Please always remember to hold it under your MC.*

With MC and CC, and larger size needles

**Rows 1 – 3:** Work the stranded colourwork pattern on both sides of the project as shown in Rows 1 – 3 of Chart 2 on Page 11. (267) Cut MC.

With CC and larger size needles

**Row 4 (WS):** K6. SM. M1PR. P to M. SM. P1. SM. P to M. M1PL. SM. K6. (269)

**Rows 5 (RS):** K6. SM. M1L. K to M. M1R. SM. K1. SM. M1L. K to M. M1R. SM. K6. (273)

**Row 6:** Rep Row 4. (275) Cut CC.

With MC and larger size needles

**Rows 7 (RS):** K6. SM. M1L. K to M. M1R. SM. K1. SM. M1L. K to M. M1R. SM. K6. (279)

**Row 8 (WS):** K6. SM. M1PR. P to M. SM. P1. SM. P to M. M1PL. SM. K6. (281)

**Row 9:** K6. SM. M1L. [K2tbIPO. YO. K1. YO. SK2PO. P1.] Rep [ ] to 6 sts before M. K2tbIPO. YO. K3. M1R. SM. K1. SM. M1L. K3. YO. SK2PO. [P1. K2tbIPO. YO. K1. YO. SK2PO.] Rep [ ] to M. M1R. SM. K6. (215)

**Row 10:** K6. SM. M1PR. K1. [P1. YO. P3. YO. P1. K1.] Rep [ ] to 6 sts before M. P1. YO. P5. SM. P1. SM. P5. YO. P1. [K1. P1. YO. P3. YO. P1.] Rep [ ] to 1 st before M. K1. M1PL. SM. K6. (287)

**Row 11:** K6. SM. M1L. K1. P1. [K7. P1.] Rep [ ] to 7 sts before M. K7. M1R. SM. K1. SM. M1L. K7. [P1. K7.] Rep [ ] to 2 sts before M. P1. K1. M1R. SM. K6. (291)

**Row 12:** K6. SM. M1PR. P2. K1 [P7. K1.] Rep [ ] M. SM. P1. SM. [K1. P7.] Rep [ ] to 3 sts before M. K1. P2. M1PL. SM. K6. (293)

**Row 13:** K6. SM. M1L. YO. SK2PO. P1. [K2tbIPO. YO. K1. YO. SK2PO. P1.] Rep [ ] to M. M1R. SM. K1. SM. M1L. [P1. K2tbIPO. YO. K1. YO. SK2PO.] Rep [ ] to 4 sts before M. P1. K2tbIPO. YO. M1R. SM. K6. (193)

**Row 14:** K6. SM. M1PR. P2. YO. P1. K1. [P1. YO. P3. YO. P1. K1.] Rep [ ] to 1 st before M. P1. SM. P1. SM. P1. [K1. P1. YO. P3. YO. P1.] Rep [ ] to 4 sts before M. K1. P1. YO. P2. M1PL. SM. K6. (299)

**Row 15:** K6. SM. M1L. K5. P1. [K7. P1.] Rep [ ] to 1 st before M. K1. M1R. SM. K1. SM. M1L. K1. [P1. K7.] Rep [ ] to 6 sts before M. P1. K5. M1R. SM. K6. (303)

**Row 16:** K6. SM. M1PR. P6. K1. [P7. K1.] Rep [ ] to 2 sts before M. P2. SM. P1. SM. P2. [K1. P7.] Rep [ ] to 7 sts before M. K1. P6. M1PL. SM. K6. (305)

**Row 17:** K6. SM. M1L. [K2tbIPO. YO. K1. YO. SK2PO. P1.] Rep [ ] to 2 sts before M. K2. M1R. SM. K1. SM. M1L. K2. [P1. K2tbIPO. YO. K1. YO. SK2PO.] Rep [ ] to M. M1R. SM. K6. (233)

**Row 18:** K6. SM. M1PR. K1. [P1. YO. P3. YO. P1. K1.] Rep [ ] to 3 sts before M. P3. SM. P1. SM. P3. [K1. P1. YO. P3. YO. P1.] Rep [ ] to 1 st before M. K1. M1PL. SM. K6. (311)

**Row 19:** K6. SM. M1L. K1. P1. [K7. P1.] Rep [ ] to 3 sts before M. K3. M1R. SM. K1. SM. M1L. K3. [P1. K7.] Rep [ ] to 2 sts before M. P1. K1. M1R. SM. K6. (315) Cut MC.

With CC and larger size needles

**Row 20 (WS):** Rep Row 4. (317)

**Row 21 (RS):** Rep Row 5. (321)

**Row 22:** Rep Row 20. (323)

With CC and MC, and larger size needles

Work in stranded colourwork pattern on both sides of the project as shown in Rows 23 – 25 of Chart 2 on Page 11. (333) Cut CC.

## Section 5 – Stockinette

*This section starts with WS row.*

With MC and smaller size needles

**WS Row:** K6. SM. M1PR. P to M. SM. P1. SM. P to M. M1PL. SM. K6. (335)

**Row 1 (RS):** K6. SM. M1L. K to M. M1R. SM. K1. SM. M1L. K to M. M1R. SM. K6. (339)

**Row 2 (WS):** K6. SM. M1PR. P to M. SM. P1. SM. P to M. M1PL. SM. K6. (341)

Rep Rows 1 – 2 for 2 more times. (353)

**Row 7:** K6. SM. M1L. K to M. M1R. SM. K1. SM. M1L. K to M. M1R. SM. K6. (357) (4 sts incr: 2 side increases + 2 central increases)

**Row 8:** K6. SM. M1PR. P to M. M1PL. SM. P1. SM. M1PR. P to M. M1PL. SM. K6. (361) (4 sts incr: 2 side increases + 2 central increases)

**Row 9:** K6. SM. M1L. K1. M1L. K to M. M1R. SM. K1. SM. M1L. K to 1 st before M. M1R. K1. M1R. SM. K6. (367) (6 sts incr: double side increases + central increases)

**Row 10:** K6. SM. M1PR. P to M. M1PL. SM. P1. SM. M1PR. P to M. M1PL. SM. K6. (371) (4 sts incr: side incr + central incr)

**Rows 11 – 12:** Rep Rows 9 – 10. (381)

## Section 6 – Pattern Motif C

*For fully charted instructions please refer to Chart 1 on Page 10.*

*In colourwork sections CC is a dominant colour. Please always remember to hold it under your MC.*

With MC and CC, and larger size needles

Repeat Section 2 – Pattern Motif A, once. (457)

Cut CC.

## Stitch Count Checklist

<b>Rows 1 - 2</b>	(387) <input type="checkbox"/>
<b>Rows 3 - 4</b>	(393) <input type="checkbox"/>
<b>Rows 5 - 6</b>	(399) <input type="checkbox"/>
<b>Rows 7 - 8</b>	(405) <input type="checkbox"/>
<b>Rows 9 - 10</b>	(411) <input type="checkbox"/>
<b>Rows 11 - 12</b>	(417) <input type="checkbox"/>
<b>Rows 13 - 14</b>	(423) <input type="checkbox"/>
<b>Rows 15 - 16</b>	(429) <input type="checkbox"/>
<b>Rows 17 - 18</b>	(435) <input type="checkbox"/>
<b>Rows 19 - 20</b>	(441) <input type="checkbox"/>
<b>Rows 21 - 22</b>	(447) <input type="checkbox"/>
<b>Rows 23 - 24</b>	(453) <input type="checkbox"/>
<b>Row 25</b>	(457) <input type="checkbox"/>

## Section 7 – Stockinette

*This section starts with WS row.*

With MC and smaller size needles

**WS Row:** K6. SM. M1PR. P to M. SM. P1. SM. P to M. M1PL. SM. K6. (459)

**Row 1 (RS):** K6. SM. M1L. K to M. M1R. SM. K1. SM. M1L. K to M. M1R. SM. K6. (463)

**Row 2 (WS):** K6. SM. M1PR. P to M. SM. P1. SM. P to M. M1PL. SM. K6. (465)

Rep Rows 1 – 2 for 4 more times. (489)

*Reminder: Doublecheck your final stitch count before proceeding to the next section.*

Remove garter edge markers from left and right side of the shawl (the ones indicating the division between shawl body and K6 garter edge).

Do not remove central spine markers.

## Section 8 – End Ribbing

During Row 1 you will be working the ribbing and, at the same time, placing stitch markers to indicate the division between each scalloped petal. You will need total of 32 stitch markers.

There are no side increases during End Ribbing section, only central spine increases on both sides of the project on Rows 1 - 6.

With MC and smaller size needles

**Row 1 (RS):** K2. PM. [(K1tbl. P1.) x 8. PM.] Rep [ ] to 2 sts before central M. K1tbl. P1. M1R. SM. K1. SM. M1L. P1. K1tbl. [PM. (P1. K1tbl.) x 8.] Rep to last 2 sts. PM. K2. (491)

**Row 2 (WS):** K2. SM. [(P1tbl. K1.) x 8. SM.] Rep [ ] to 3 sts before central M. P1tbl. K1. P1tbl. M1PL. SM. P1. SM. M1PR. P1tbl. K1. P1tbl. [SM. (K1. P1tbl.) x 8.] Rep [ ] to last 2 sts. SM. K2. (493)

**Row 3:** K2. SM. [(K1tbl. P1.) x 8. SM.] Rep [ ] to 4 sts before central M. (K1tbl. P1.) x 2. M1R. SM. K1. SM. M1L. (P1. K1tbl.) x 2. [SM. (P1. K1tbl.) x 8.] Rep to last 2 sts. SM. K2. (495)

**Row 4:** K2. SM. [(P1tbl. K1.) x 8. SM.] Rep [ ] to 5 sts before central M. (P1tbl. K1.) x 2. P1tbl. M1PL. SM. P1. SM. M1PR. (P1tbl. K1.) x 2. P1tbl. [SM. (K1. P1tbl.) x 8.] Rep [ ] to last 2 sts. SM. K2. (497)

**Row 5:** K2. SM. [(K1tbl. P1.) x 8. SM.] Rep [ ] to 6 sts before central M. (K1tbl. P1.) x 3. M1R. SM. K1. SM. M1L. (P1. K1tbl.) x 3. [SM. (P1. K1tbl.) x 8.] Rep to last 2 sts. SM. K2. (499)

**Row 6:** K2. SM. [(P1tbl. K1.) x 8. SM.] Rep [ ] to 7 sts before central M. (P1tbl. K1.) x 3. P1tbl. M1PL. SM. P1. SM. M1PR. (P1tbl. K1.) x 3. P1tbl. [SM. (K1. P1tbl.) x 8.] Rep [ ] to last 2 sts. SM. K2. (501)

**Row 7:** K2. SM. [(K1tbl. P1.) x 8. SM.] Rep [ ] to 8 sts before central M. (K1tbl. P1.) x 4. SM. K1tbl. SM. (P1. K1tbl.) x 4. [SM. (P1. K1tbl.) x 8.] Rep to last 2 sts. SM. K2. (501; no incr)

**Row 8:** K2. SM. [(P1tbl. K1.) x 8. SM.] Rep [ ] to 8 sts before central M. (P1tbl. K1.) x 4. SM. P1tbl. SM. (K1. P1tbl.) x 4. [SM. (K1. P1tbl.) x 8.] Rep [ ] to last 2 sts. SM. K2. (501; no incr)

*Reminder: Doublecheck your final stitch count before proceeding to the next section.*

You should have the following stitch distribution on your needles on the RS of the work:

2 sts. M. 248 sts. M. 1 central spine st. M. 248 sts. M. 2 sts.



## Petal Shaping

German Short Rows (GSRs) are used to obtain the final scalloped petal shape of the End Ribbing.

For the GSR technique please refer to the Special Techniques Section on Page 3.

You will be shaping each 16 sts wide petal individually before moving onto the next one. This will also allow you to resolve the GSRs on the left side of each petal until you reach the end of the whole RS ribbing row of the project.

Then you will proceed to the WS of the ribbing row where you will resolve the remaining GSRs until you reach the end of the whole WS ribbing row of the project.

Finally you will bind off using Stretchy Ribbing Bind-Off.

## RS Ribbing Row of the Project

There are 3 (three) distinct petal shaping sections in this RS row of the project:

**Right Wing Petal Section** (to the right of the central spine; each petal consists of 16 sts),

**Central Petal Section** (a single petal formed around the central spine; the petal consists of 17 sts),

**Left Wing Petal Section** (to the left of the central spine; each petal consists of 16 sts).

### Right Wing Petal Section

With MC and smaller size needles

**Garage edge:** K2. **SM.**

#### Petal starts:

Step 1 (RS): Work in established ribbing pattern (est patt) for 15 sts. Turn work.

Step 2 (WS): GSR. Work in est patt for 14 sts. Turn work.

Step 3: GSR. Work in est patt for 13 sts. Turn work.

Step 4: GSR. Work in est patt for 12 sts. Turn work.

Step 5: GSR. Work in est patt for 11 sts. Turn work.

Step 6: GSR. Work in est patt for 10 sts. Turn work.

Step 7: GSR. Work in est patt for 9 sts. Turn work.

Step 8: GSR. Work in est patt for 8 sts. Turn work.

Step 9 (RS): GSR. Work in est patt for 7 sts. Do not turn work.

(You now have total of 8 GSR sts - 4 GSR sts on each side of the petal)

Step 10: Now you will be resolving the following 4 GSR sts and also working the last st of the petal repeat before moving to the next petal. (Remember to work each 2-leg GSR as one st):

P1. K1. P1. K1. P1. **SM.**

Repeat Step 1 – Step 10 for 14 more times. (total of 15 petals along the Right Wing Petal Section)

### Central Petal Section

You have now reached the 17 sts wide central spine petal. (It is 1 st wider than all the other petals).

Remove the two st markers indicating the central spine stitch.

Now, work the central spine petal as follows:

Step 1 (RS): Work in established ribbing pattern (est patt) for 17 sts. Turn work.

Step 2 (WS): GSR. Work in est patt for 16 sts. Turn work.

Step 3: GSR. Work in est patt for 15 sts. Turn work.

Step 4: GSR. Work in est patt for 14 sts. Turn work.

Step 5: GSR. Work in est patt for 13 sts. Turn work.

Step 6: GSR. Work in est patt for 12 sts. Turn work.

Step 7: GSR. Work in est patt for 11 sts. Turn work.

Step 8: GSR. Work in est patt for 10 sts. Turn work.

Step 9: GSR. Work in est patt for 9 sts. Turn work.

Step 10: GSR. Work in est patt for 8 sts. Turn work.

Step 11 (RS): GSR. Work in est patt for 7 sts. Do not turn work.

(You now have total of 10 GSR sts – 5 GSR sts on each side of the petal)

Step 12: Now you will be resolving the following 5 GSR sts to move to the next petal. (Remember to work each 2-leg GSR as one st):

K1. P1. K1. P1. K1. **SM.**



### ***Left Wing Petal Section***

#### **Petal Starts:**

Step 1 (RS): P1. Then work in established ribbing pattern (est patt) for 15 sts. Turn work.

Step 2 (WS): GSR. Work in est patt for 14 sts. Turn work.

Step 3: GSR. Work in est patt for 13 sts. Turn work.

Step 4: GSR. Work in est patt for 12 sts. Turn work.

Step 5: GSR. Work in est patt for 11 sts. Turn work.

Step 6: GSR. Work in est patt for 10 sts. Turn work.

Step 7: GSR. Work in est patt for 9 sts. Turn work.

Step 8: GSR. Work in est patt for 8 sts. Turn work.

Step 9 (RS): GSR. Work in est patt for 7 sts. Do not turn work.

(You now have total of 8 GSR sts – 4 GSR sts on each side of the petal)

Step 10: Now you will be resolving the following 4 GSR sts to move to the next petal. (Remember to work each 2-leg GSR as one st):

P1. K1. P1. K1. **SM.**

Repeat Step 1 – Step 10 for 14 more times. (total of 15 petals along the Left Wing Petal Section)

**Garter edge:** K2.

The RS Ribbing Row of the Project is completed.

### **WS Ribbing Row of the Project**

There are 3 (three) distinct petal shaping sections in this WS row of the project:

***Right Wing Petal Section*** (to the right of the central spine; each petal consists of 16 sts),

***Central Petal Section*** (a single petal formed around the central spine; the petal consists of 17 sts),

***Left Wing Petal Section*** (to the left of the central spine; each petal consists of 16 sts ).

### ***Right Wing Petal Section***

**Garter edge:** K2. **SM.**

#### **Petal starts:**

Step 1: (P1tbl. K1.) x 5. P1tbl.

Step 2: Now you will be resolving the following 4 GSR sts and also working the last st of the petal repeat

before moving to the next petal. (Remember to work each 2-leg GSR as one st):

K1. P1. K1. P1. K1. **SM.**

Repeat Step 1 – Step 2 for 14 more times. (total of 15 petals along the Right Wing Petal Section)

### ***Central Petal Section***

Step 1: (P1tbl. K1.) x 6.

Step 2: Now you will be resolving the following 5 GSR sts to move to the next petal. (Remember to work each 2-leg GSR as one st):

P1. K1. P1. K1. P1. **SM.**

### ***Left Wing Petal Section***

#### **Petal Starts:**

Step 1: (K1. P1tbl.) x 6.

Step 2: Now you will be resolving the following 4 GSR sts to move to the next petal. (Remember to work each 2-leg GSR as one st):

K1. P1. K1. P1. **SM.**

Rep Step 1 – Step 2 for 14 more times. (total of 15 petals along the Left Wing Petal Section)

**Garter edge:** K2.

The WS Ribbing Row of the Project is completed.

Bind off using Stretchy Ribbing Bind-Off.

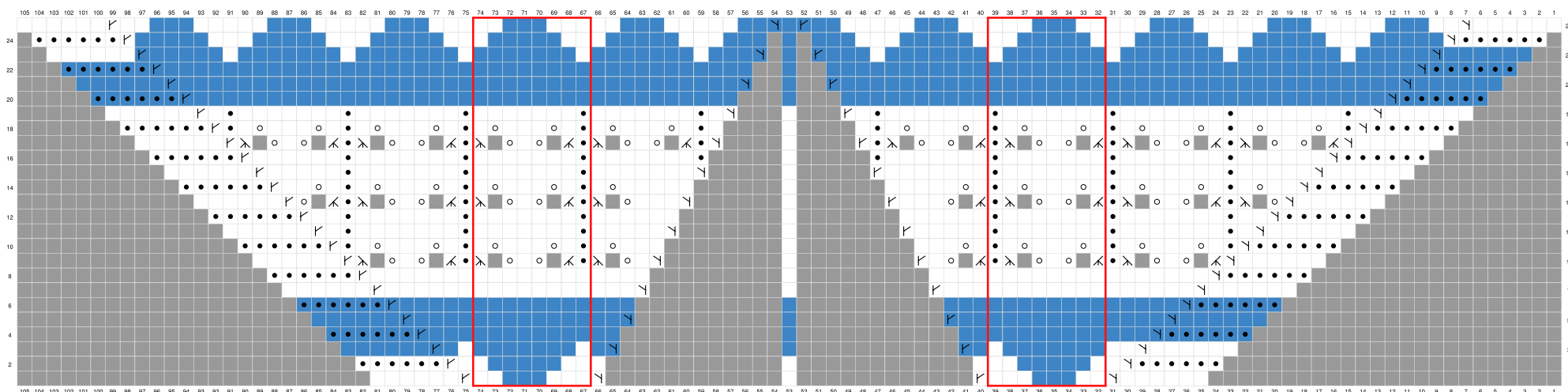
For Stretchy Ribbing Bind-Off technique please refer to the Special Techniques Section on Page 3.

Wet-block gently to the finished measurements, lightly shaping each petal individually with blocking pins to achieve a rounded shape and straight ribbing lines around GSR sts.

## CHART 1 – PATTERN MOTIF A & C

Read RS rows from right to left and WS rows from left to right.

In colourwork sections CC is a dominant colour. Please always remember to hold it under your MC.



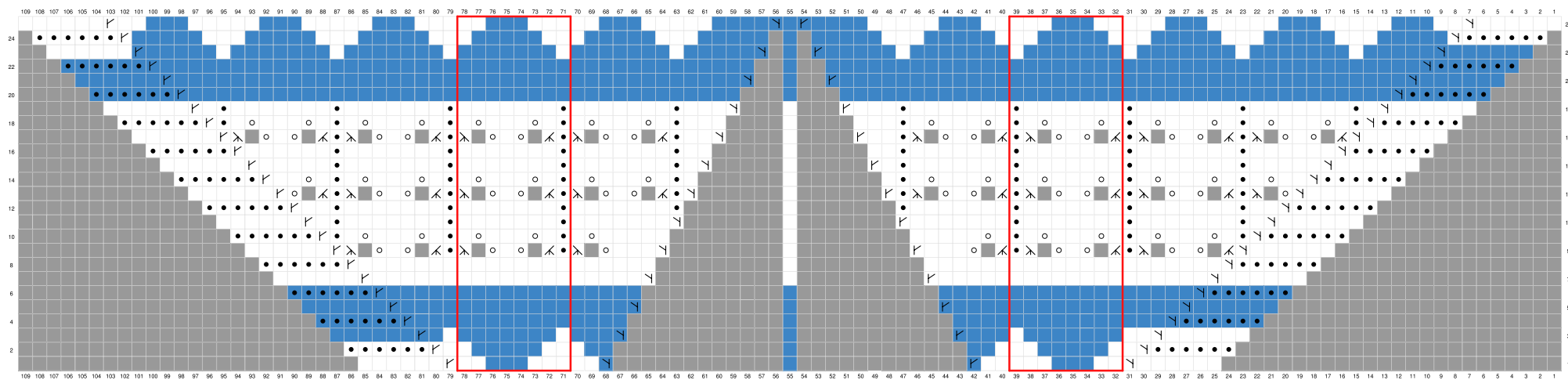
### LEGEND (CHART 1)

	RS: K in MC WS: P in MC		RS: K in CC WS: P in CC
	K2tblPO in MC		RS: M1L in CC WS: M1PL in CC
	RS: M1L in MC WS: M1PL in MC		RS: M1R in CC WS: M1PR in CC
	RS: M1R in MC WS: M1PR in MC		RS: P in CC WS: K in CC
	RS: P in MC WS: K in MC		No stitch
	SK2PO		Repeat
	RS: YO in MC WS: YO in MC		

## CHART 2 – PATTERN MOTIF B

Read RS rows from right to left and WS rows from left to right.

In colourwork sections CC is a dominant colour. Please always remember to hold it under your MC.



### LEGEND (CHART 2)

	RS: K in MC WS: P in MC		RS: K in CC WS: P in CC
	K2tblPO in MC		RS: M1L in CC WS: M1PL in CC
	RS: M1L in MC WS: M1PL in MC		RS: M1R in CC WS: M1PR in CC
	RS: M1R in MC WS: M1PR in MC		RS: P in CC WS: K in CC
	RS: P in MC WS: K in MC		No stitch
	SK2PO		Repeat
	RS: YO in MC WS: YO in MC		

## TIPS & SUGGESTIONS

- You can choose to use any woolen-spun light fingering weight yarn paired with a lace weight silk mohair held together, or just one thread of regular fingering weight woolen-spun yarn.
- The needle size in this design is guided by the drape and stitch definition. It is ok to have a slightly tighter gauge than given in the instructions, as long as you are happy with the textural definition of your lace stitches.
- When deciding on the colour choices, consider the resulting contrast. The design really shines in mutually lower contrast yarns and was created specifically for muted, soft, understated tones.
- To ensure the shawl blocks out to its full size, please remember to work the side garter stitches and side increases intentionally looser than your regular knitting tension. With the continuous side increases on RS and WS of the project, the main body fabric along the edges tends to tighten up, if worked in the same tension as the rest of the project.
- For a clean look on the WS of the project, trap your colourwork floats at equal intervals or use ladderback jacquard method to manage the floats.

Thank you very much for supporting my work by purchasing Audria Shawl pattern.

I would love to see your works in progress and finished projects. If you are on Instagram, you are welcome to share your project updates with **#AudriaShawl** and tag me **@isangknits**, so I don't miss it. Or create a project page on Ravelry.

If you have any questions, suggestions or just want to say hi, you can always contact me via email, Instagram or Ravelry. Happy knitting and joyful wearing!

