

Minna knitted dress Novita Venla

Size(s)

XS(S)M(L)XL

Finished dimensions

body circumference 72(80)88(96)104 cm / 28¼(31½)34¾(37¾)41 in length
103(105)107(109)111 cm / 40½(41¼)42¼(43)43¾ in inner sleeve length 46(47)48(49)50 cm
/ 18(18½)19(19¼)19¾ in

Yarn demand

Novita Venla (658) Oat 600(650)700(750)800 g

Needles and other supplies

2 circular needles (80 cm / 32 in) Novita 3½ mm (UK 9½ / US 4) or size needed; 3 mm (UK 11 / US 2½) circular needle (40 cm / 16 in) for the neckline and cuffs; cable needle

Stitch patterns

- Garter stitch in the round: *knit 1 round, purl 1 round*, repeat *-*.
- Cable pattern: work following the chart and instructions.
- Ribbing: *k1, p1*, repeat *-* to end of row. On the wrong side rows, knit the knit sts and purl the purl sts.
- Ribbing in the round: *k1, p1*

Body

Using the larger circular needle cast on 432(480)528(576)624 sts and place marker for beginning of round. Work garter st in the round.

After 5 rounds begin the cable pattern on row 1 of chart I. Work the 12 st pattern 36(40)44(48)52 times. Work rows 2-16 of the chart, then keep repeating rows 1-16.

When the piece measures approx. 65(65)66(66)67 cm and you have last worked row 1, knit a **pleat**: *slip 6 sts onto cable needle and hold in front, knit together the first st on the cable needle and the first st on the left-hand needle, knit together the next three pairs of sts in the same manner, then purl together the next two pairs. Slip 6 sts onto cable needle and hold in back, purl together the first two pairs of sts and knit together the next four pairs.* Repeat *-* 17(19)21(23)25 more times. 216(240)264(288)312 sts now on the needles.

Resume the cable pattern on row 3 of chart I. Repeat the 12 st pattern 18(20)22(24)26 times. Work rows 4-16 of the chart, then keep repeating rows 1-16.

After working approx. 19(20)20(21)21 cm after the pleat round, finish on an odd-numbered row of the chart and divide the sts into two groups: on the next round work the first 102(114)126(135)147 sts following the pattern, **bind off** the next 12(12)12(18)18 sts for an **armhole**, work following the chart until 6(6)6(9)9 sts remain, **bind off** the next

12(12)12(18)18 sts for the other **armhole**, removing the marker at the beginning of round. 96(108)120(126)138 sts each on the back and front pieces. Leave the front sts on hold.

Top back

Working flat resume the cable pattern with the 96(108)120(126)138 back sts. On every other row **bind off** 5(5)5(6)6x1 st at both ends for the **armholes** = 86(98)110(114)126 sts.

When the armhole measures 17(18)19(20)21 cm, on a RS row **bind off** the middle 44(44)44(46)46 sts for the **neckline**, then work to end. Work one side at a time. On every other row bind off 2x2 sts at the neckline edge.

When the armhole measures 19(20)21(22)23 cm, **bind off** the 17(23)29(30)36 shoulder sts.

Knit the other side in the same manner.

Top front

Work like back until the armhole measures 11(12)13(14)15 cm.

On a RS row **bind off** the middle 36(36)36(38)38 sts for the **neckline**, then work to end. Work one side at a time. On every other row bind off 4x2 sts at the neckline edge.

When the armhole measures 19(20)21(22)23 cm, **bind off** the 17(23)29(30)36 shoulder sts.

Knit the other side in the same manner.

Sleeves

Using the smaller circular needle cast on 62(64)68(70)74 sts and work ribbing flat for 5 cm.

Switch to the larger needle and begin the cable pattern on row 1 of chart II. The starting point for each size is marked with an arrow. Keep repeating the 12 st pattern as needed. Work rows 2-16 of the chart, then keep repeating rows 1-16.

When the piece measures 14(12)12(10)10 cm, **increase** 1 st inside the edge sts at both ends. Repeat the increases every 1,5 cm 20(22)23(25)26 more times = 104(110)116(122)128 sts. Work the increased sts following the cable pattern.

When the piece measures 46(47)48(49)50 cm, on every other row **bind off** 1x6(6)6(9)9 sts and 5(5)5(6)6x1 st at both ends. Bind off remaining sts.

Knit the other sleeve in the same manner.

Finishing

Pin to measurements wrong side up, mist and allow to dry.

Sew the shoulder seams.

Neckline edge: using the short circular needle and starting at the right shoulder seam, pick up and knit 118(118)118(122)122 sts. Work ribbing in the round for 2,5 cm, then bind off in

pattern.

Attach the sleeves following the red markings on the pattern. Sew the sleeve seams and side seams.

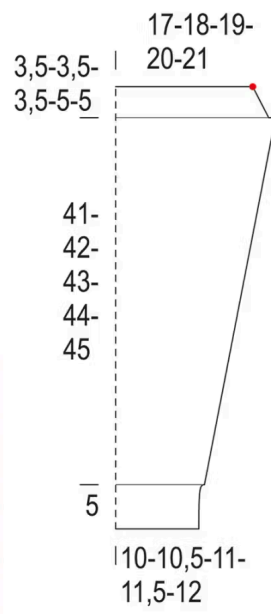
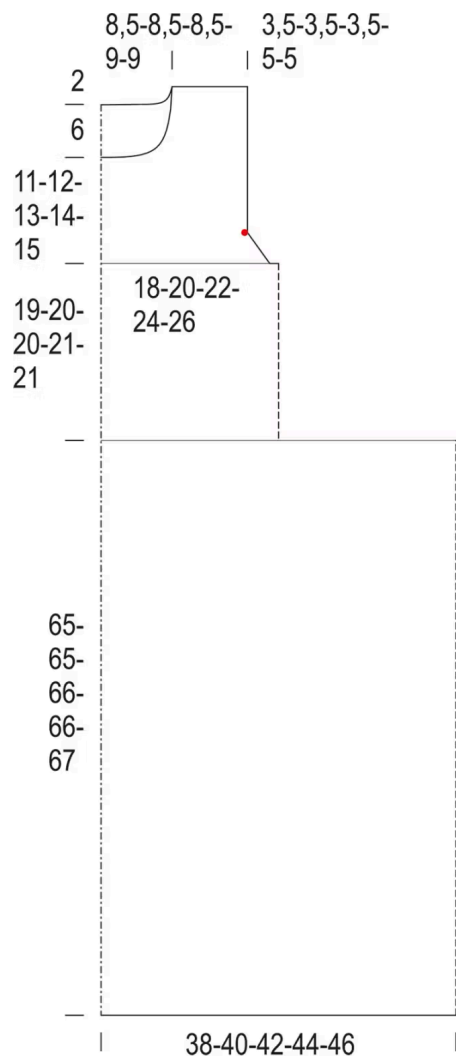


Chart I

Keep repeating rows 1-16

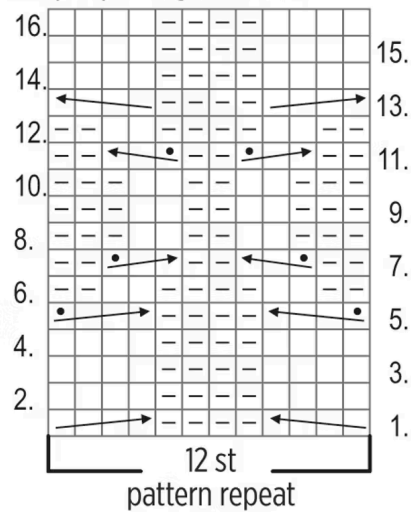
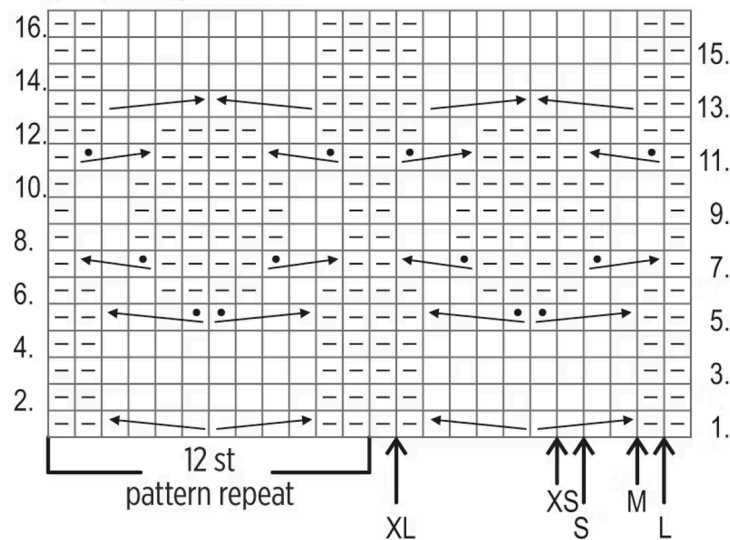


Chart II

Keep repeating rows 1-16



- = knit st, purl on WS rows
- = purl st, knit on WS rows
- = slip 2 sts onto cable needle and hold in front, k2, k2 from cable needle
- = slip 2 sts onto cable needle and hold in back, k2, k2 from cable needle
- = slip 2 sts onto cable needle and hold in front, p2, k2 from cable needle
- = slip 2 sts onto cable needle and hold in back, k2, p2 from cable needle
- = slip 2 sts onto cable needle and hold in front, p1, k2 from cable needle
- = slip 1 st onto cable needle and hold in back, k2, p1 from cable needle