

THE FOUR SEASONS SCARF PATTERN



KATHARINA KUNTZ

I divided the scarf into four seasons and chose the motifs accordingly. You can see seasonal vegetables, items, and the festivals.

Small details represent the villagers (Marriage Candidates). They are divided into the season based on their birthdays. A few of the villagers only have small details, for which I apologize. In the end, it became increasingly difficult to work with the space.

At first I wanted the beer to symbolize Shane, but some people didn't like that because he's an alcoholic. I chose the details for many of the villagers based on their favorite items. Of course, you can choose a different item to represent Shane, for example the chicken. The beer could also simply symbolize the Stardrop Saloon.

The charts are available in color and in gray tones for easier printing.

You will need:

Fingering weight Yarn (2,5 – 3,5mm/ US 1 ½ - 4 Needle).

Light Pink: around 189m / 207 yards	Pink: around 189m / 207 yards
Light Green: around 197m / 216 yards	Green: around 197m / 216 yards
Orange: around 215m / 235 yards	Brown: around 215m / 235 yards
Light Blue: around 120m / 131 yards	Blue: around 120m / 131 yards

I used:

1 skein SOUL fingering Weight Yarn (<https://punkrockunicorn.de>) in color Cassis, 400m/100g (438 yards/ 15 oz), (85% Wool 15% Nyon), or a similar weight and yardage in the fiber and color of your choice

1 skein SOUL fingering Weight Yarn (<https://punkrockunicorn.de>) in color Punsch, 400m/100g (438 yards/ 15 oz), (85% Wool 15% Nyon), or a similar weight and yardage in the fiber and color of your choice

1 skein SOUL fingering Weight Yarn (<https://punkrockunicorn.de>) in color Guacamole, 400m/100g (438 yards/ 15 oz), (85% Wool 15% Nyon), or a similar weight and yardage in the fiber and color of your choice

1 skein SOUL fingering Weight Yarn (<https://punkrockunicorn.de>) in color Avocado, 400m/100g (438 yards/ 15 oz), (85% Wool 15% Nyon), or a similar weight and yardage in the fiber and color of your choice

1 skein SOUL fingering Weight Yarn (<https://punkrockunicorn.de>) in color Fuchs, 400m/100g (438 yards/ 15 oz), (85% Wool 15% Nyon), or a similar weight and yardage in the fiber and color of your choice (gifted from punkrockunicorn)

1 skein SOUL fingering Weight Yarn (<https://punkrockunicorn.de>) in color Truffle, 400m/100g (438 yards/ 15 oz), (85% Wool 15% Nyon), or a similar weight and yardage in the fiber and color of your choice

1 skein SOUL fingering Weight Yarn (<https://punkrockunicorn.de>) in color Robins Egg, 400m/100g (438 yards/ 15 oz), (85% Wool 15% Nyon), or a similar weight and yardage in the fiber and color of your choice

1 skein SOUL fingering Weight Yarn (<https://punkrockunicorn.de>) in color Tilly, 400m/100g (438 yards/ 15 oz), (85% Wool 15% Nyon), or a similar weight and yardage in the fiber and color of your choice

Knitting needles: size 0 (2mm)

Gauge: 32 stitches and 44 rows per 4 inches

Finished dimensions: 84 inches (212 cm) long, 6,3 inches (16 centimeters) wide

Additional materials: 4 Stitch markers, tapestry needle, yarn tension ring. Extra +2 spare 2mm needles (for binding of).

Skill level: Intermediate level



General Notes:

As with most double-knit projects, the two sides mirror each other, with colors opposite. If you never knitted a double-knit this video could help you understand the technique more. I would start watching at 2:44 because we are going to use a different cast on method than in this video.

<https://www.youtube.com/watch?v=uQKZR-2TwCA&t=626s>

You can also see how the color change works and how to use the tension ring. Don't worry if you have never worked with one you are going to get a hang of it pretty fast. A Tipp from me, I wrapped the yarn twice around my pinky to keep the tension.

The Side with the light background is the Main side but you can do the opposite if you like it more. Side two is the back of the scarf, with a dark background. Whichever side is facing you on a particular row is the knit side, and each alternating back side stitch will be a purl. Stop knitting and check your work frequently – a wrong color stitch, a purl where a knit stitch should be, or the unused color laying across the wrong side of a stitch will stand out on the finished scarf. You can use duplicate stitch to cover an error that is many rows back or re knit new. But I recommend to duplicate stitch over the error if there are not too many mistakes. It's soooo difficult to get the loops on the needle again after unraveling it. I put a stitch marker every 10 stitches it helps a lot. Be sure to twist the yarn at the end/beginning a row – if you do not, the front and back of the scarf will separate. In the first Video I linked this is explained as well.

Instructions:

Cast on 100 stitches with the invisible cast on method for double knitting. This Video explains is really well. It's the first Method of the four. <https://www.youtube.com/watch?v=2lWI2jlpBM&t=200s>

After the cast on turn your piece and knit every odd stitch in Punsch (Red/Pink, or your color of choice), purl every even numbered stitch in Cassis (Pink, or your color of choice). The charts show only one side of the two-sided project. Starting with Chart 1, follow the charts row by row (below). The two strands of yarn need to move back and forth together so that they stay sandwiched between the two layers of knitting when not being used to make stitches. If you don't keep them moving together you will end up with the 'wrong' color wrapped around the stitches, you have knitted – you will notice pretty quickly! Remember that when you have turned the work and are coming back along the row from left to right, what is shown on the chart for that row is the purl stitch. Knit the even numbered stitches, from 50 down to 2, in the opposite color, and purl the even numbered stitches, from 49 down to 1, in the chart color. When you turn back to the original side, knit in the chart color and purl with the second color. If you are new to double-knitting this pattern should be a good place to start - the first few rows have no patterning, so your skills can develop as the scarf progresses. Always start from the bottom of the charts and work up.

Bind Off:

Put the knit and purl stitches respectively on your separate needles. Now purl all the purl stitches on the back needle, one row. After cutting the main yarn, 4 times the lengths of the width of the scarf, take your tapestry needle and make an invisible bind off for double knitting. It is like the Kitchener stitch.

Video for the Bind of: <https://www.youtube.com/watch?v=8hAHV1O1aj0>

Last but not least:

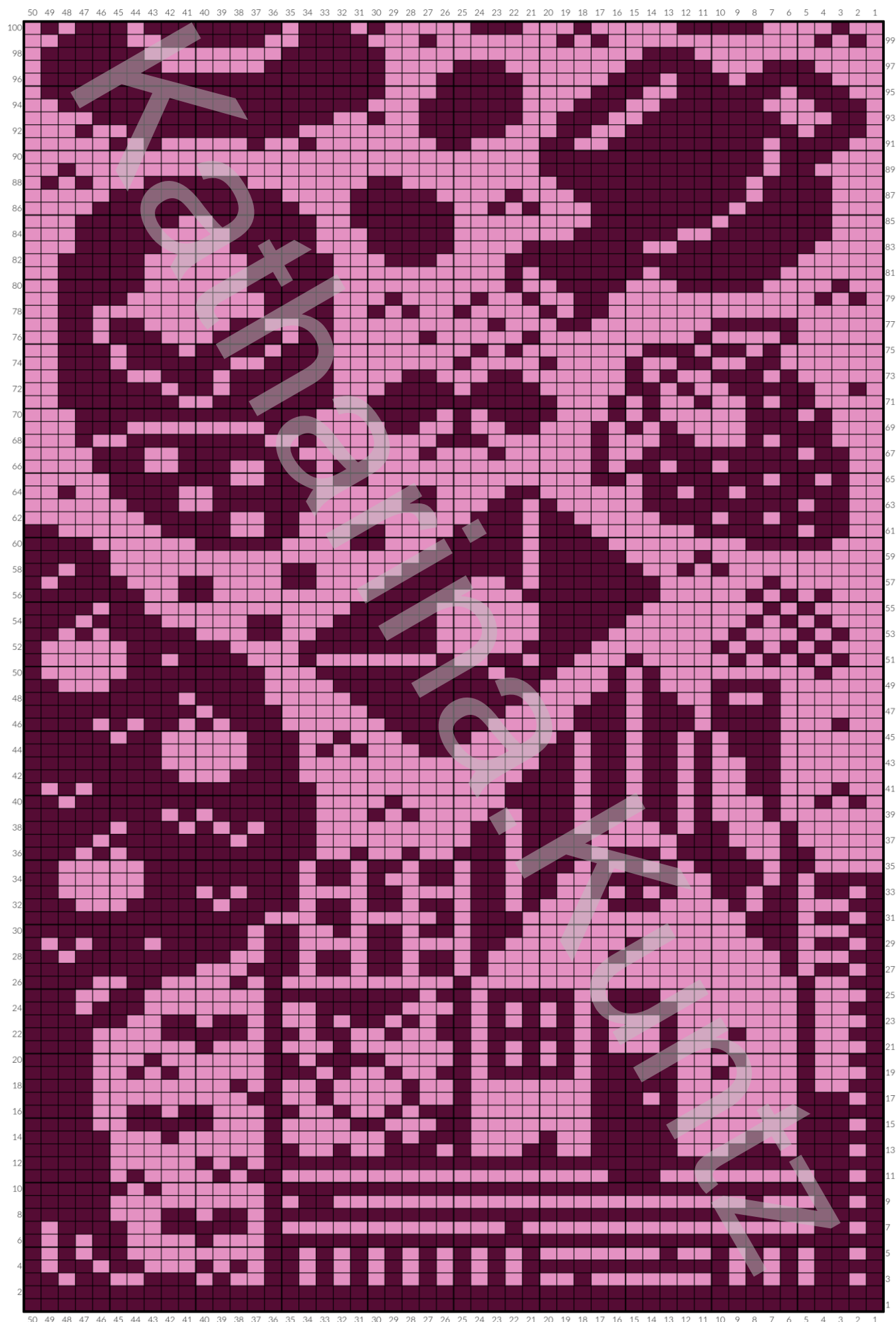
Weave in the ends and block your scarf.

I hope you had a great time knitting this fun scarf. Send me a picture of it, please. I'd love to see it. I can't wait to see which colors you choose.

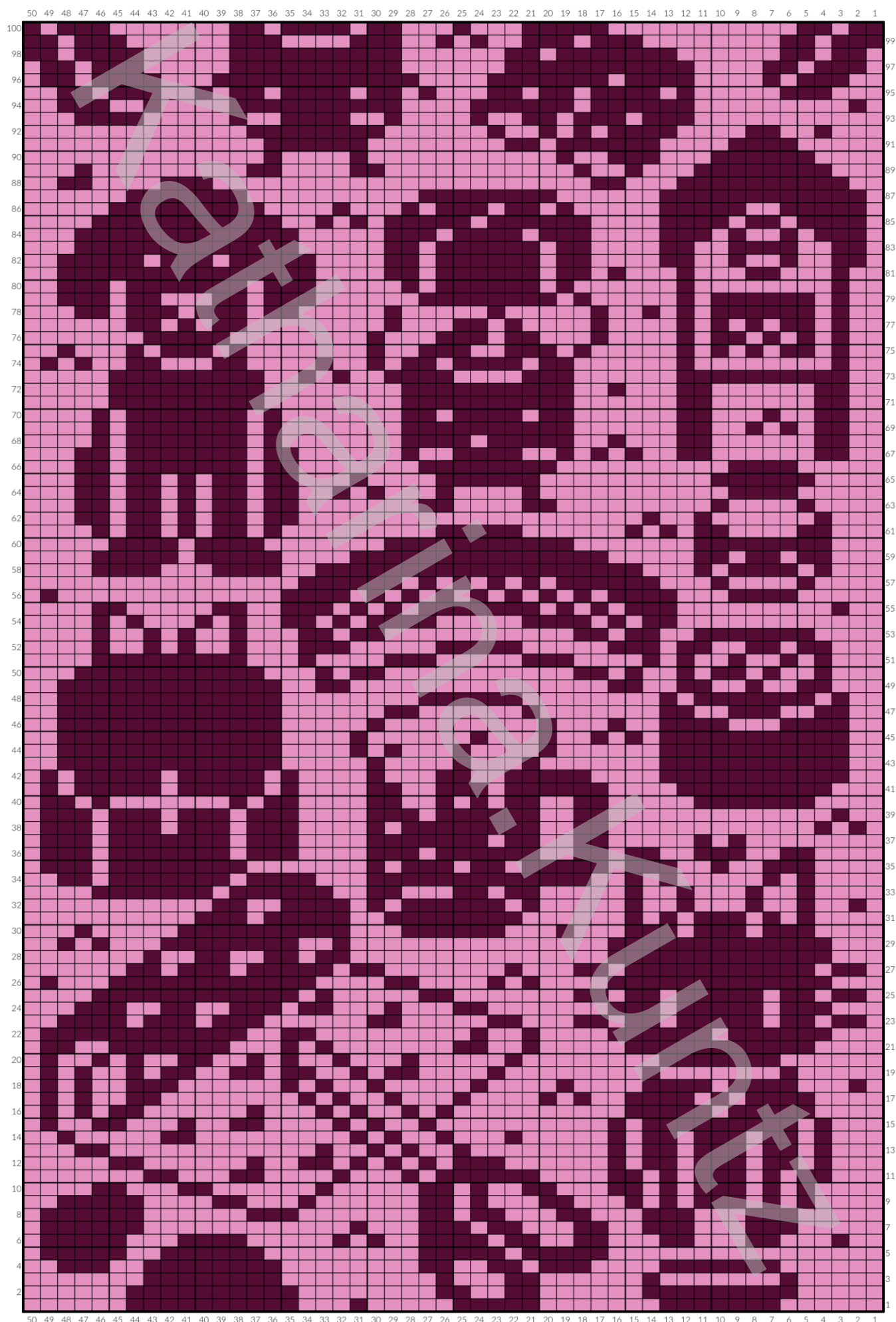
You can find me online at Instagram as [katharina.kuntz](https://www.instagram.com/katharina.kuntz)

This pattern was designed by Katharina Kuntz / June 2025. This pattern is for private use only. It is not allowed to copy, share, sell or redistribute this pattern. Neither is it allowed to sell products made with the help of this pattern. 

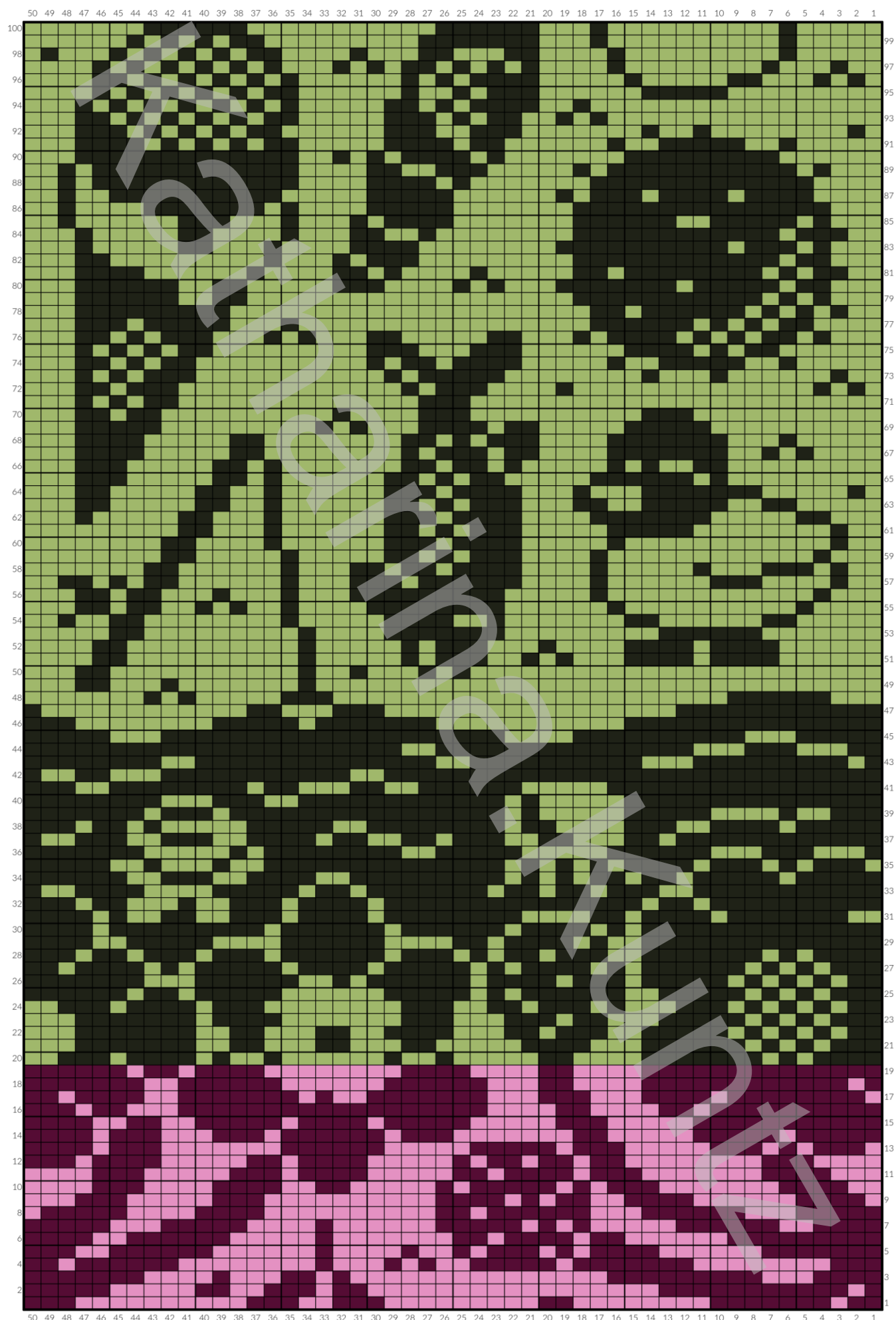
1.



2.



3.



4.



5.



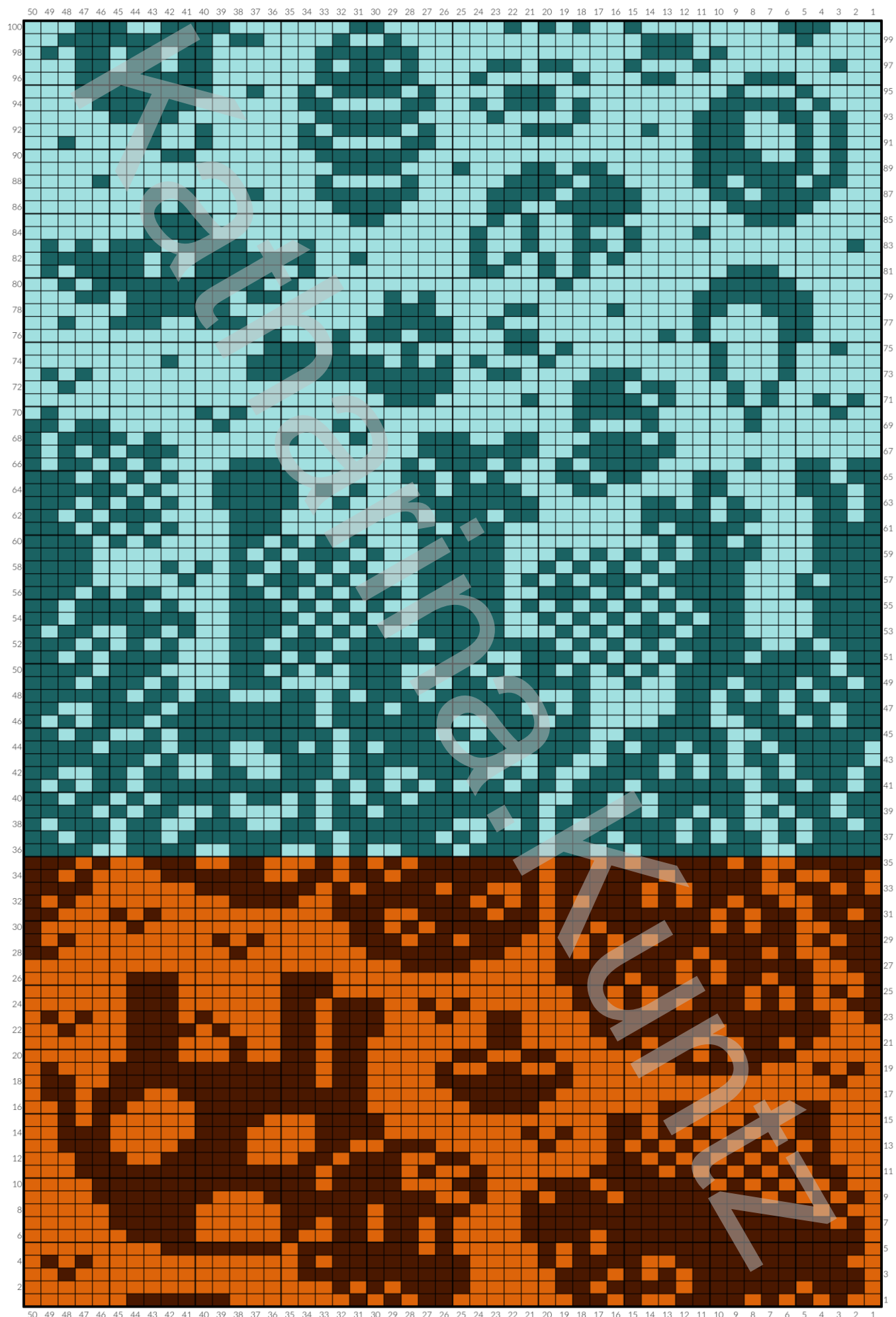
6.



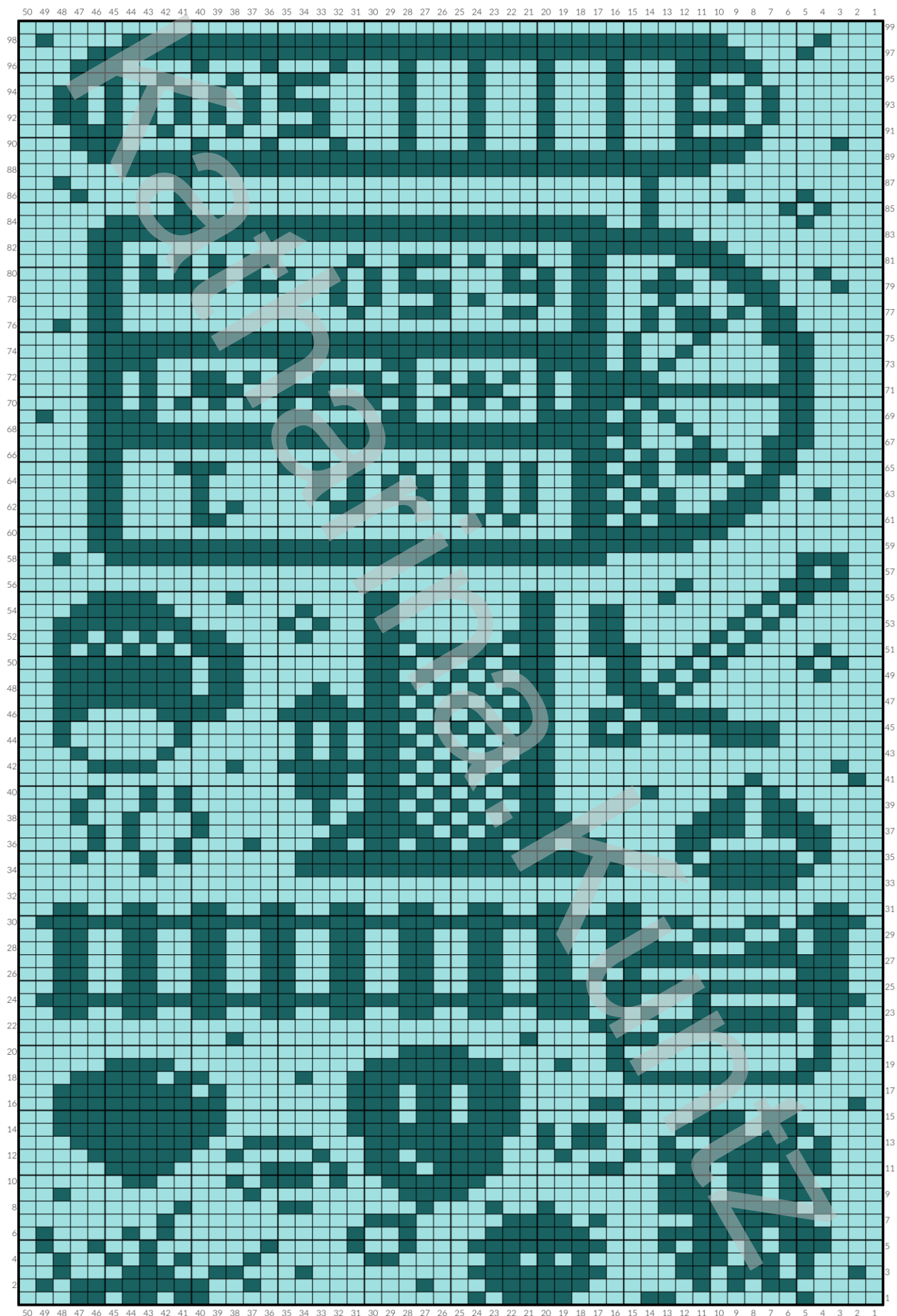
7.



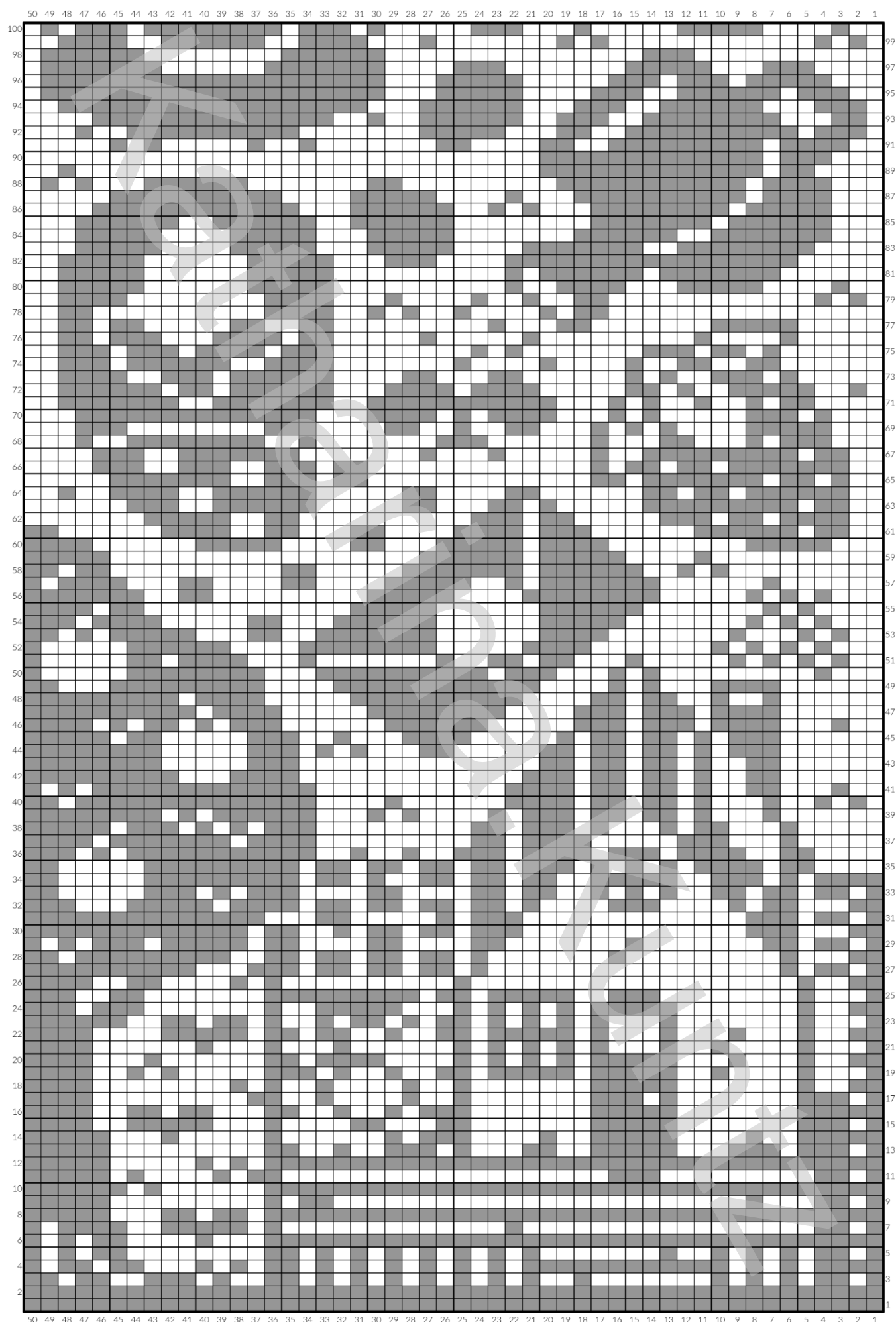
8.



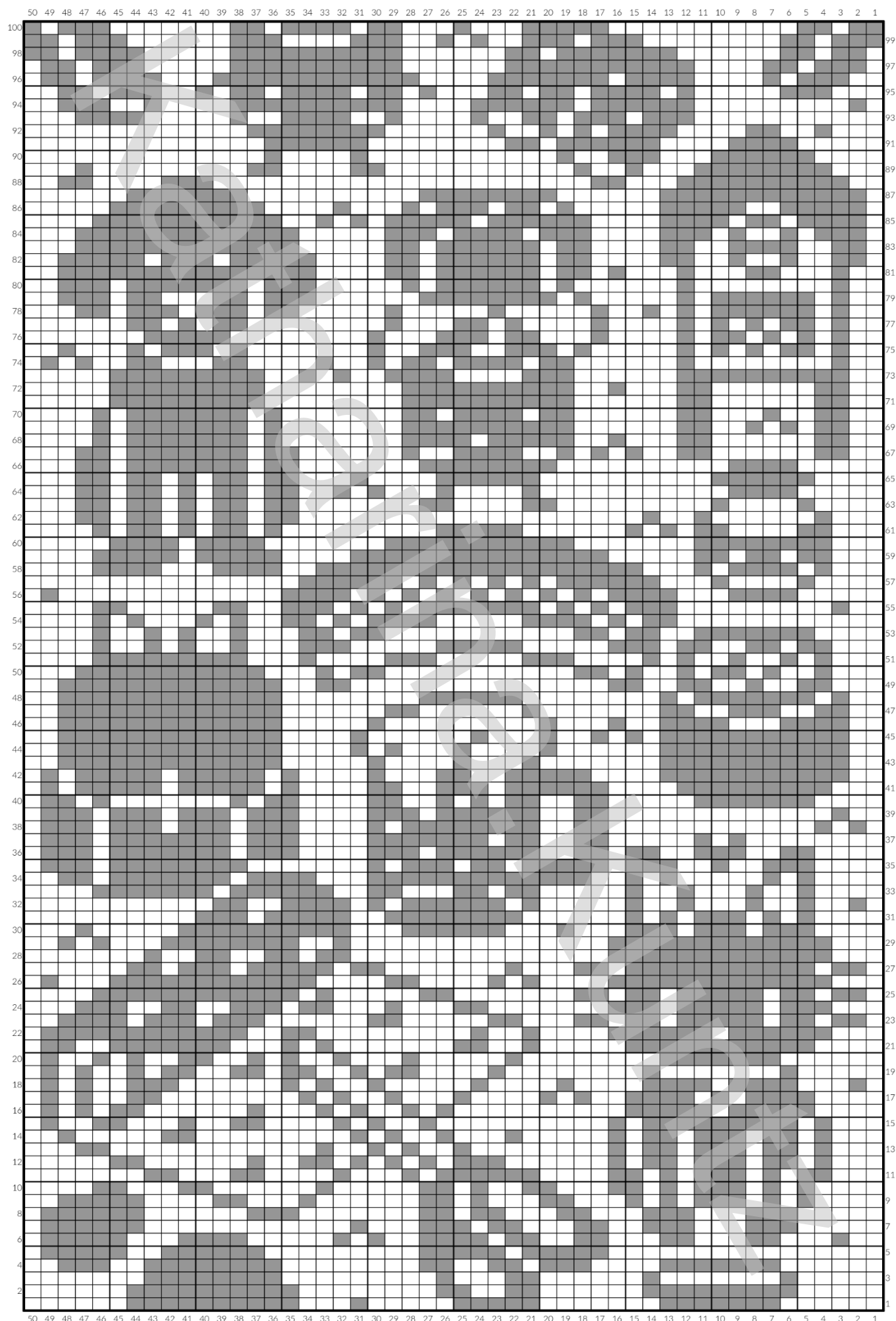
9.



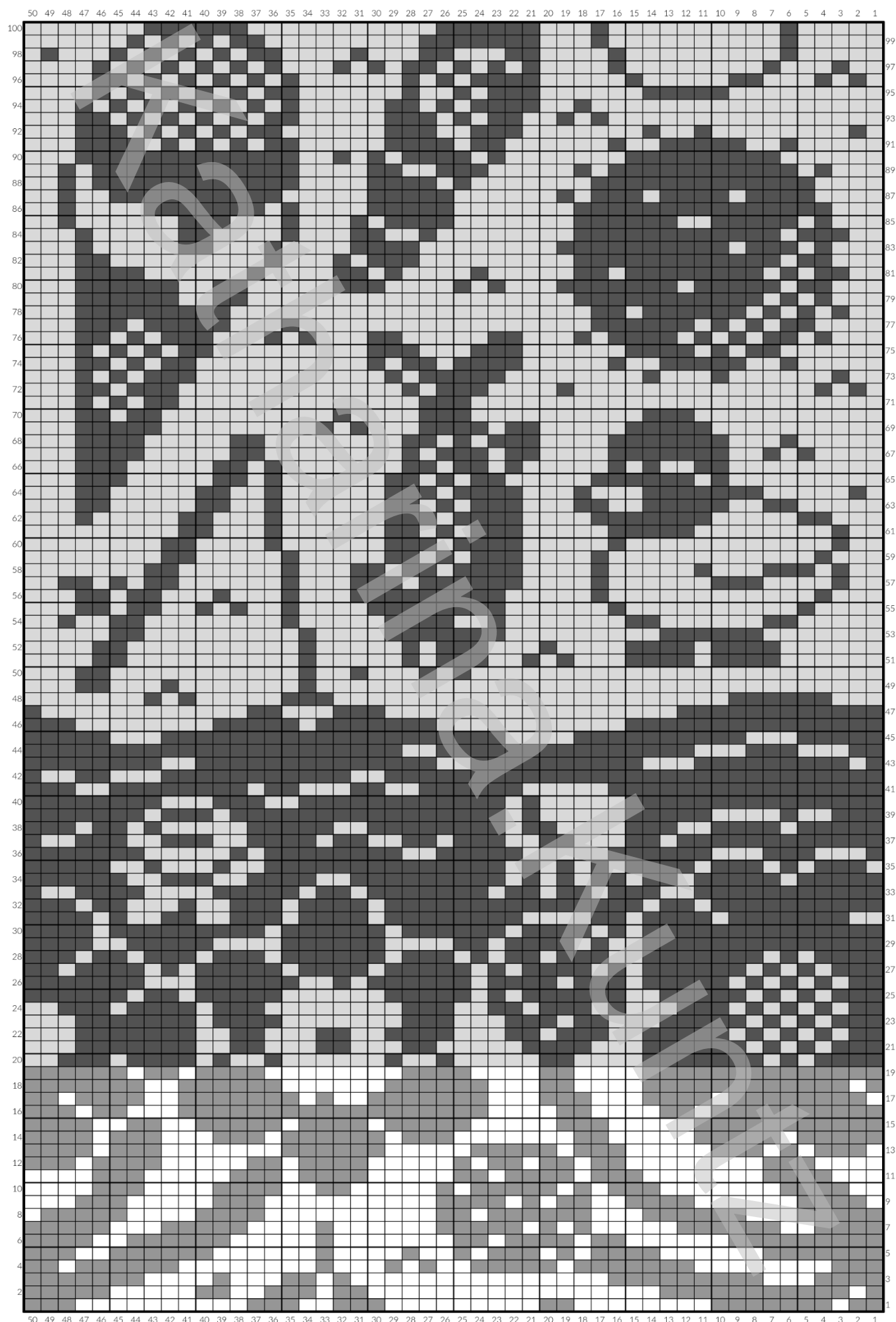
1.



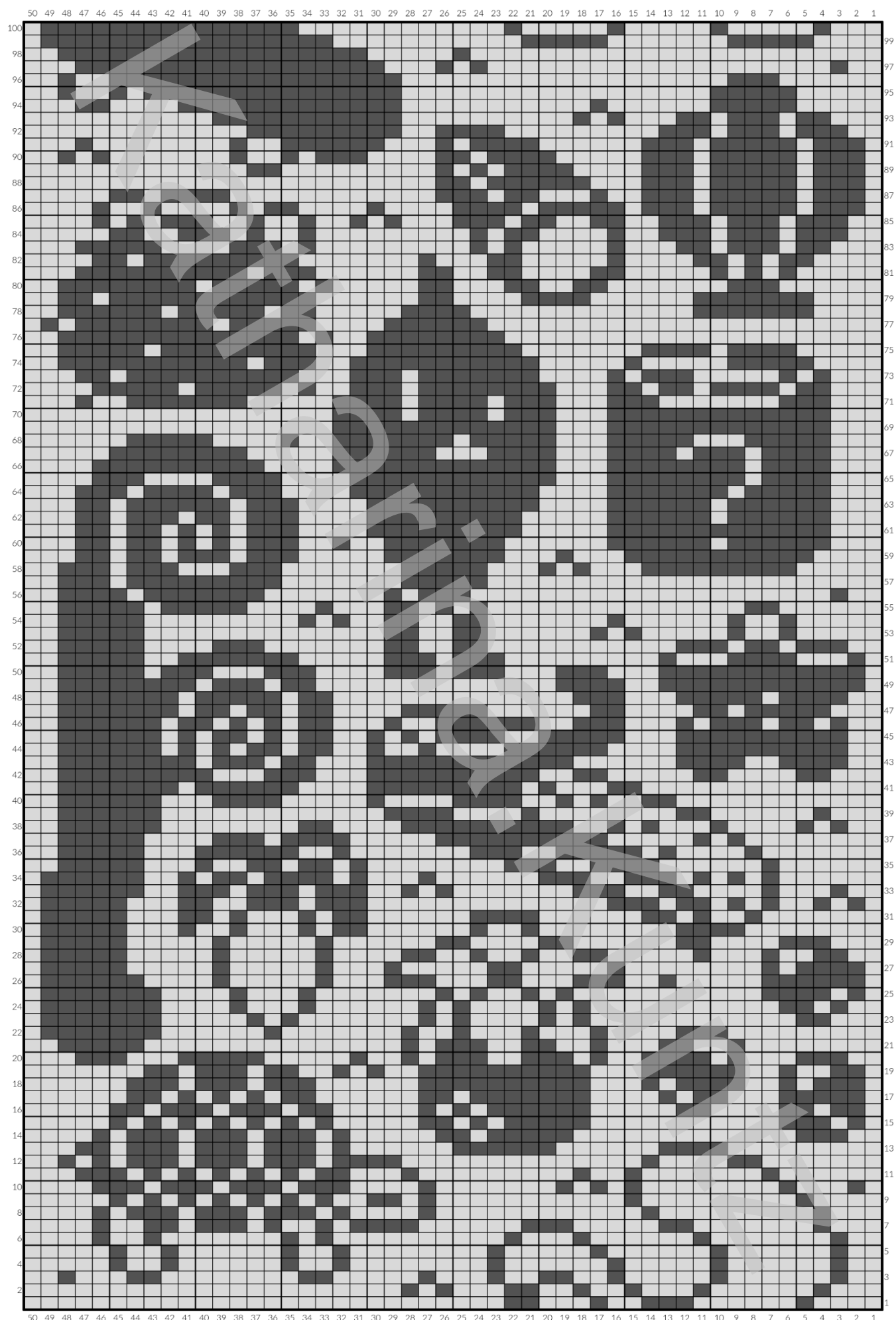
2.



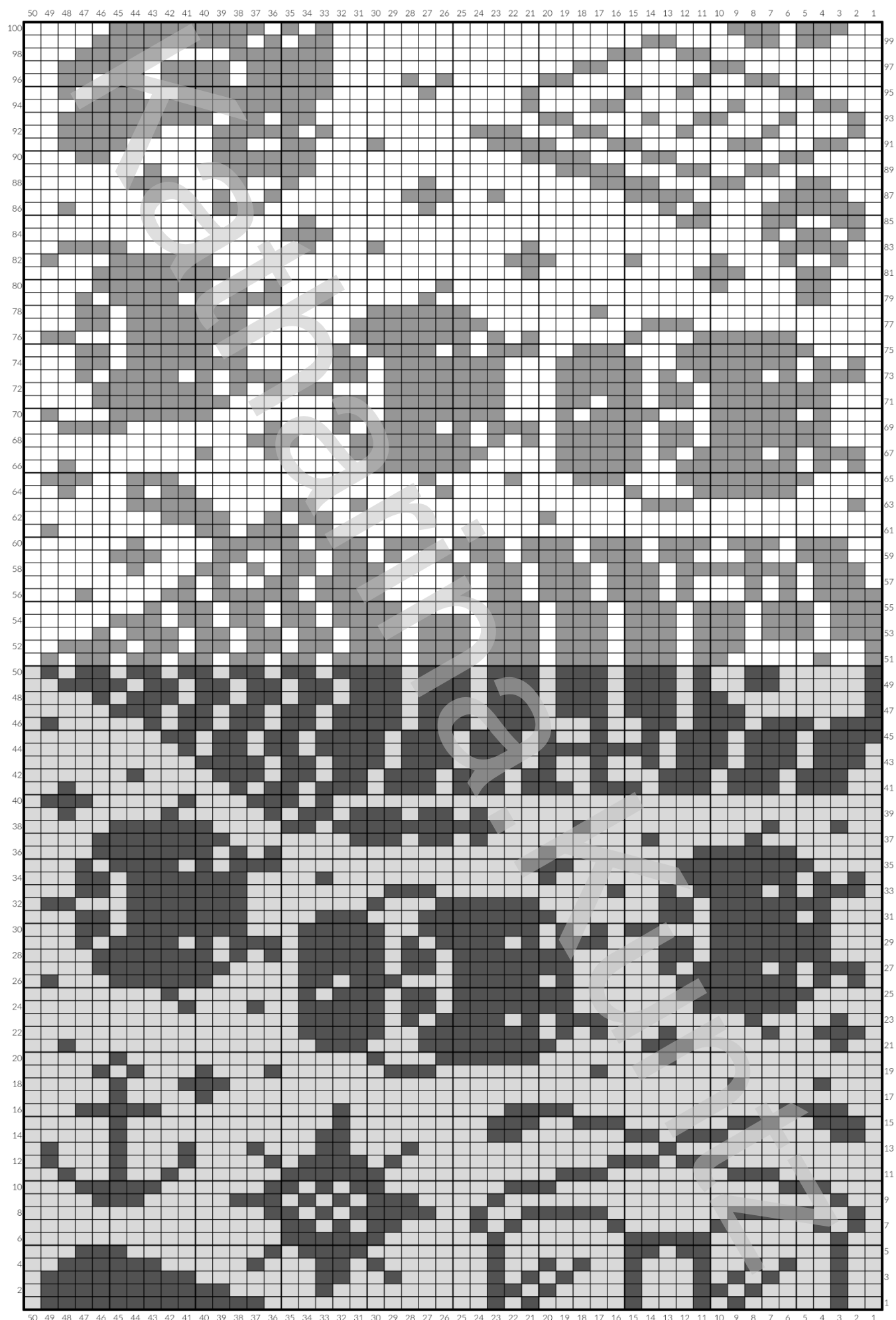
3.



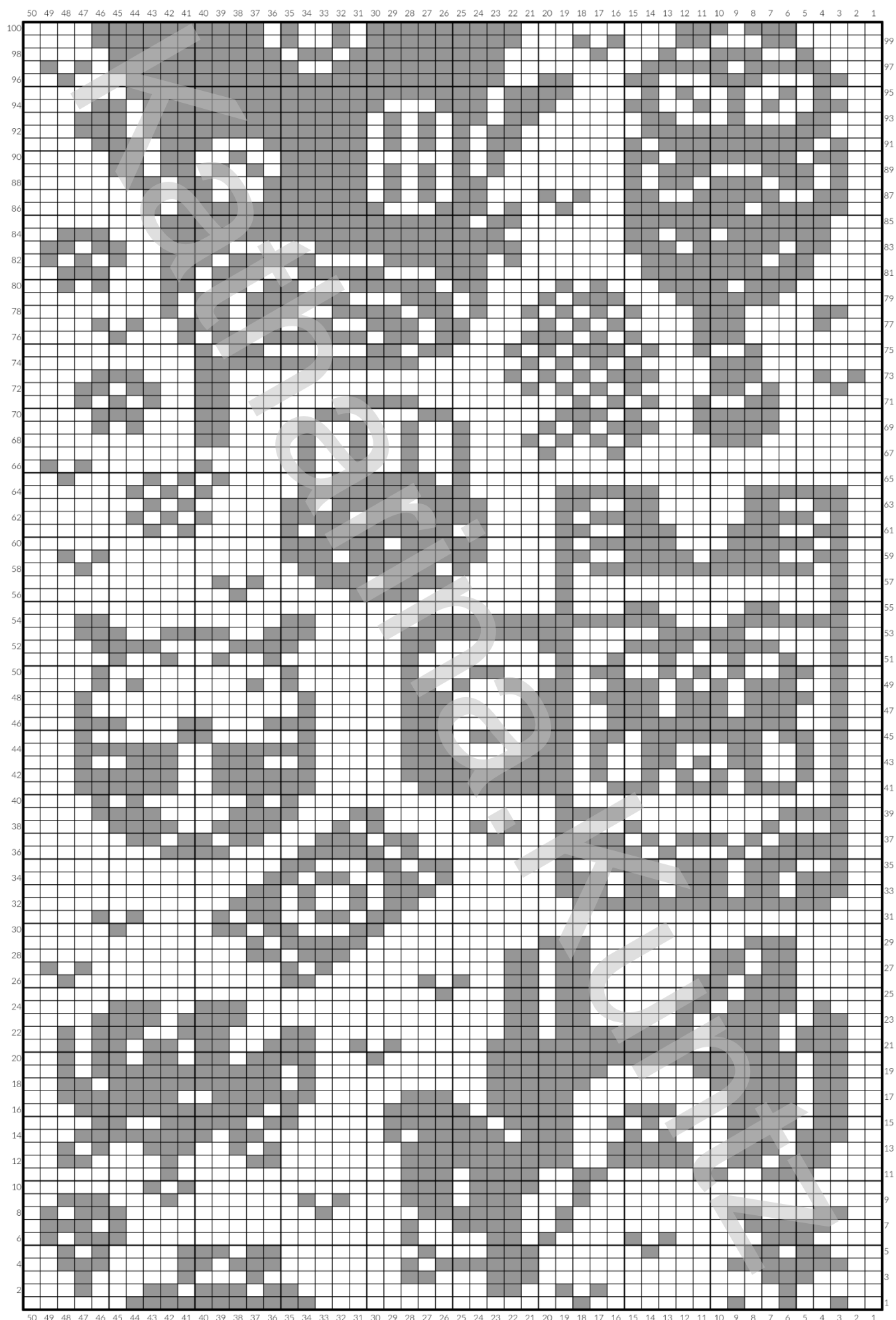
4.



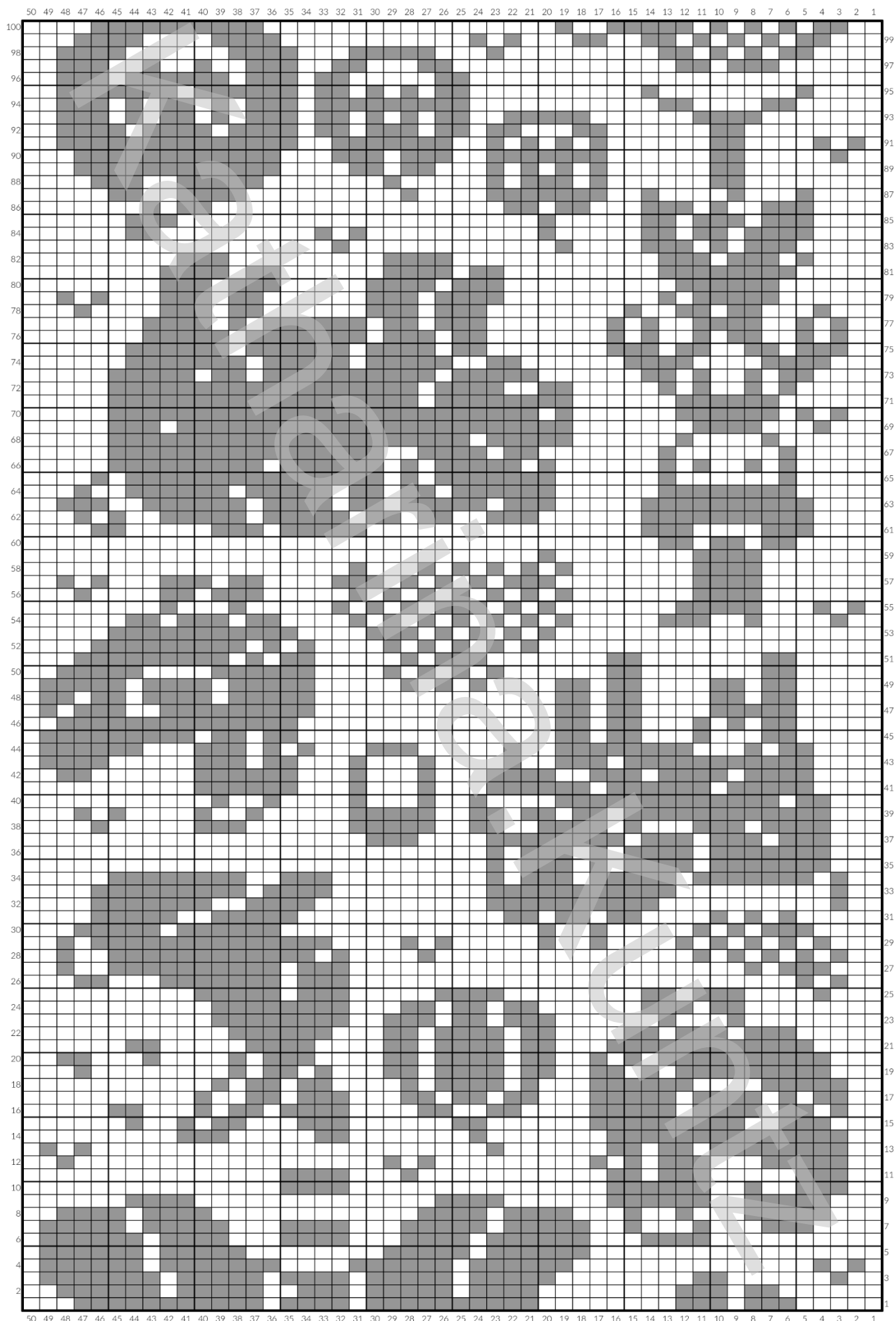
5.



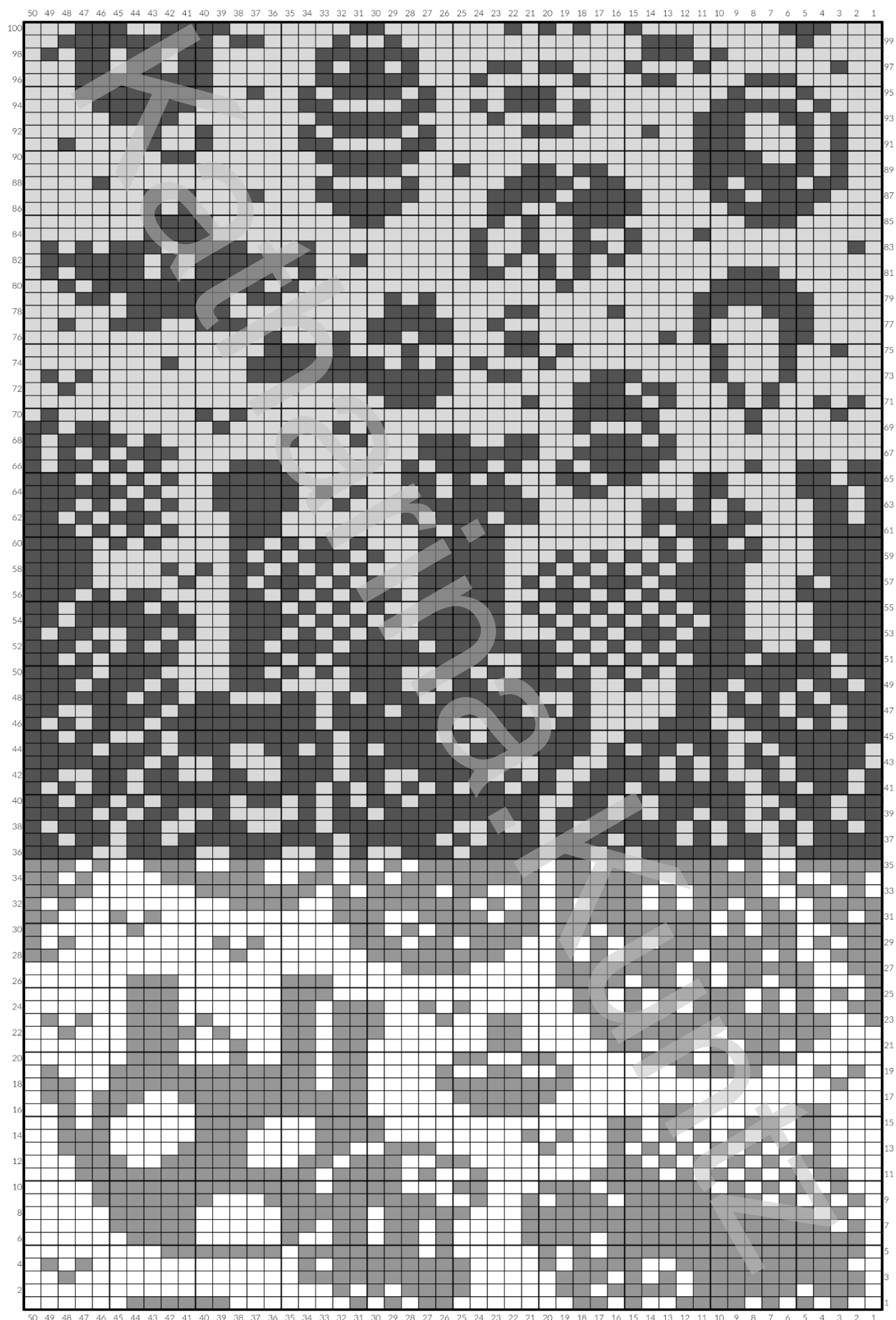
6.



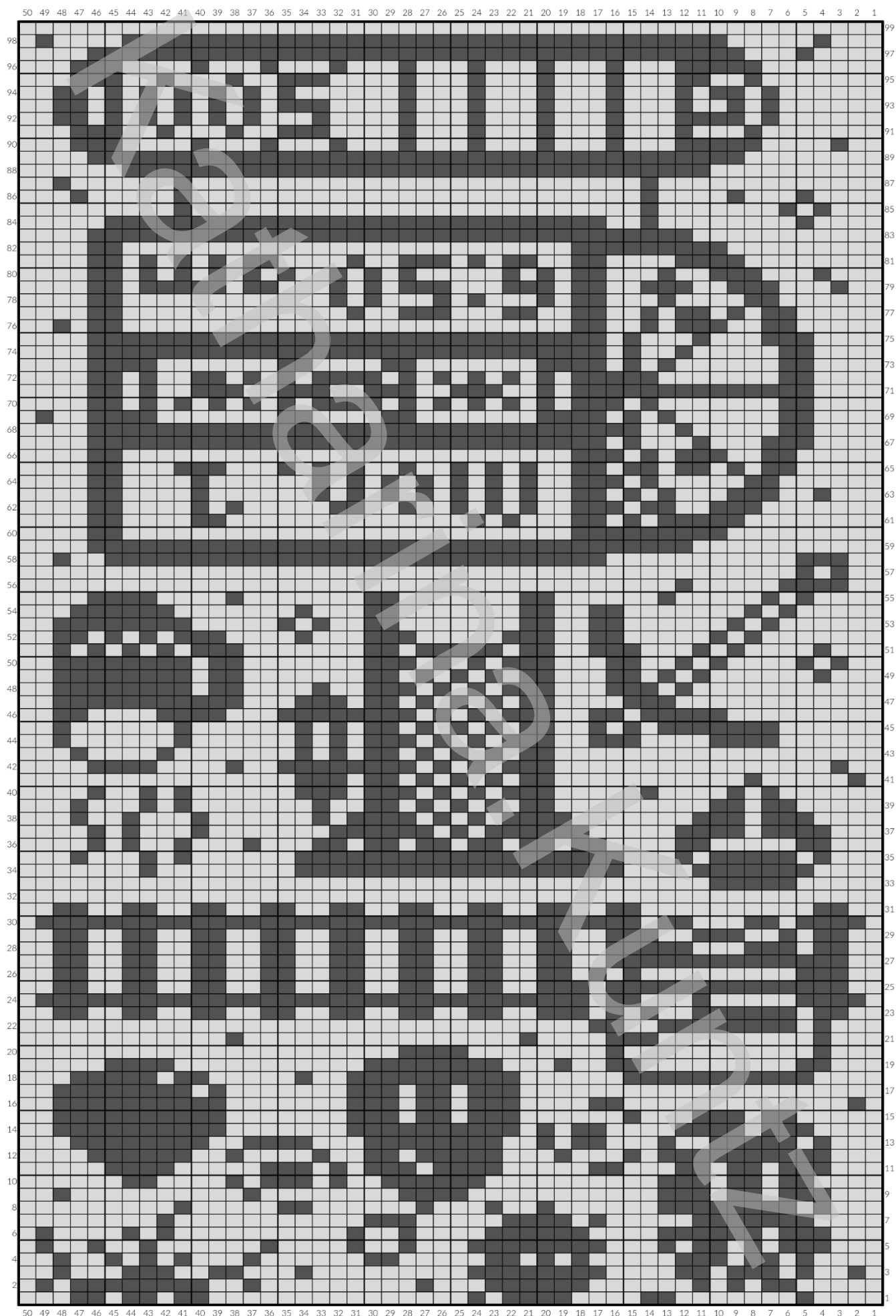
7.



8.

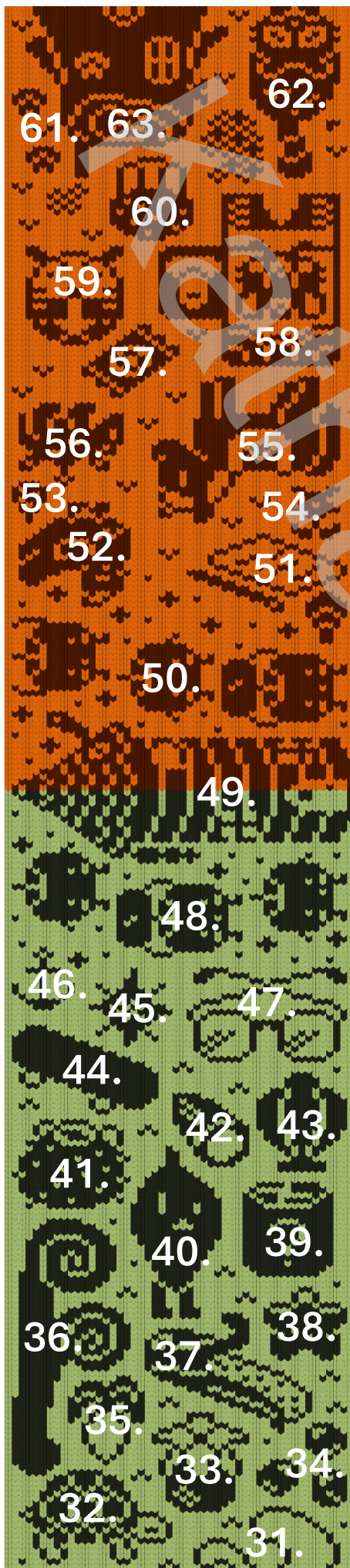


9.

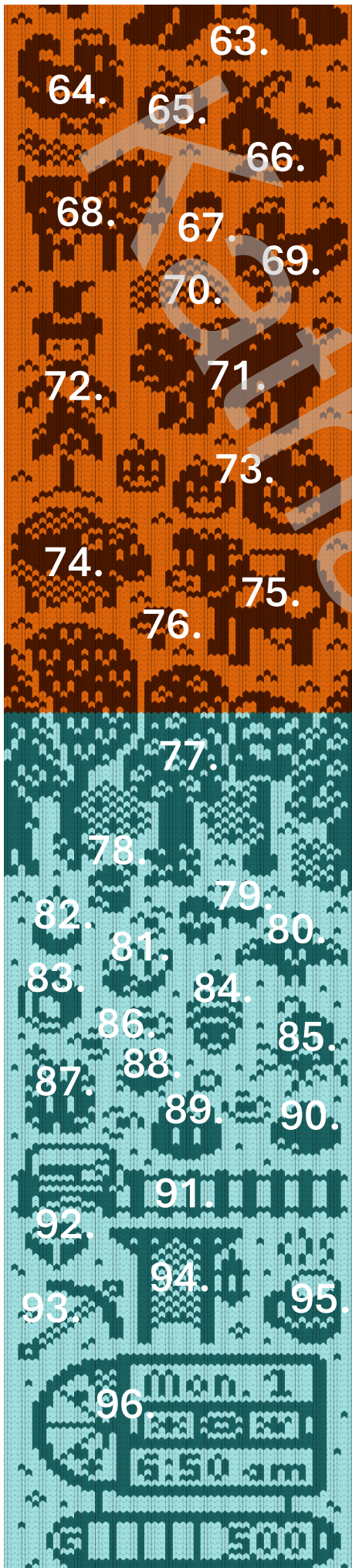




31. Mermaid's Pendant
30. Pufferfish
29. Ice Cream representing Alex
28. Iridium Rod
27. Rainbow Trout (Trout Derby)
26. Duck
25. Moonlight Jelly
24. "Rare" green Jelly
23. Flower
22. Daffodil
21. Sunflower representing Haley
20. Blue Jazz
19. Junimo
18. Mayor's Shorts
17. Bee House
16. Junimo
15. Dog
14. Honey
13. Deluxe Pack
12. Pot of gold at the end of the rainbow
11. Beer
10. Cloth and Scissors representing Emily
9. Cat
8. Straw Hat Prize from Egg Festival
7. Egg Festival Egg's
6. Iridium Watering Can
5. Parsnip Seeds
4. Strawberry
3. Grandpa's Letter
2. Apple Tree
1. Farmhouse



63. Giant Stump
62. Raccoon
61. Baby Raccoon's
60. Poppyseed Muffin representing Penny
59. SV Fair Spinning Wheel
58. Hat Mouse
57. Prize Ticket
56. Dinosaur
55. Horse
54. Stardrop
53. Void Egg
52. Void Chicken
51. Paper, Pen and Ink representing Elliot
50. Junimo's
49. Wizard's Tower
48. Junimo's
47. Maru's glasses
46. Anchor
45. Sea Urchins
44. Sam's Skateboard
43. Clam
42. Rainbow Shell
41. Cactus Fruit (Sam's Fav)
40. Krobus
39. Mystery Box
38. Starfruit
37. Corn
36. Green Rain Tree
35. Radish
34. Blueberries
33. Melon
32. Turtle
31. Mermaid's Pendant's Chain



- 63. Giant Stump
- 64. Blue Chicken
- 65. Pumpkin representing Abigail (I'm sorry)
- 66. Rabbit
- 67. Mayonnaise
- 68. Goat
- 69. Chicken
- 70. Bush
- 71. Pig
- 72. Rarecrow 1#
- 73. Jack-O-Lantern
- 74. Sheep
- 75. Cow
- 76. Common Mushroom
- 77. Trees
- 78. Truffle representing Leah (once again sorry)
- 79. Skull Key
- 80. Lava Bat
- 81. Dolomite
- 82. Frozen Tear representing Sebastian
- 83. Frog Egg representing Sebastian
- 84. Grub
- 85. Duggy
- 86. Mines Floor
- 87. Male Tiger Slime
- 88. Dust Sprite
- 89. Green Slime
- 90. Rock Crab
- 91. Minecart
- 92. Diamond
- 93. Iridium Pickaxe
- 94. The Mines
- 95. Coffee representing Harvey
- 96. The Day Cycle Display

