

A woman with blonde hair is shown from the chest down, wearing a white knit sweater with a red floral pattern. She is standing outdoors, with a white pillar and a dark door visible in the background. The sweater has a wide, slightly flared sleeve and a ribbed hem and cuffs. The floral pattern consists of small, stylized red flowers arranged in a repeating pattern across the white fabric.

FLIRT SWEATER

PATTERN AND DESIGN BY

SOFIE THORUP

/ @PROKRASST

SIZES

Small (Medium) Large

MEASUREMENTS IN CM

Width, sleeve to sleeve: 148 (150) 152

Length: 47 (52) 57

YARN IN GRAMS

Skappel Suri Norwegian Lambswool, natural white, 1001 (base colour) 400 (400) 450

Skappel Suri Norwegian Lambswool, red 1023 (pattern colour) 150 (150) 200

or any slightly brushed yarn which runs 135 meters per 50 g.

RECOMMENDED NEEDLES

Circular needle nr.6, 80 cm

Circular needle nr.6, 40 cm

I highly recommend you to create a swatch before starting, considering the amount of stitches.

GAUGE

Width: 17 st = 10 cm

Height: 20 st = 10 cm

Remember to read the pattern carefully and stay patient.

Happy knitting ♥

Design: Sofie Thorup

This work is developed by Thorup Enk and is protected as an UCD by IP rights under EU legislation. Any copying, selling or forwarding of this work, is strongly forbidden and will be considered as a case of design infringement.

Body:



Cast on 488 (498) 508 stitches on circular needle nr.6 80cm, with a skein of your preferred base colour (yarn descriptions above), and place markers as followed: by the start of the row, and after the following stitches: 60, 120, 180, 235, 244, 304, 364, 424, 479 (60, 120, 180, 240, 249, 309, 369, 429, 489) 60, 120, 180, 240, 245, 254, 314, 374, 434, 494, 499. The pattern repeats over 60 stitches, so this makes it easier to keep track of where you are in the process. Also, it marks the 9 stitches that define the sides of the garment.

Knit the first 2 rows with base colour as followed: 239(244)249 knit stitches, 1 purl stitch, 243(248)253 knit stitches, 1 purl stitch, 4 knit stitches. The purl stitch marks the line that is to be cut up, to make holes for the sleeves, later. Switch to pattern colour and knit one row purl stitch.



Going forward, purl stitches in pattern colour shall be knitted on each side of the garment. To avoid carrying the pattern coloured yarn around the entire garment when knitting the solid-coloured parts, you must cut off approx. 80 cm of the pattern coloured skein for both sides. You bring this thread upwards whilst knitting the pattern coloured purl stitches on each side (not when you are knitting the rows with flower pattern).

Large: *Knit 247 knit stitches base colour, 1 purl stitch pattern colour, 3 stitches base colour (1 knit stitch, 1 purl stitch, 1 knit stitch), 1 purl stitch pattern colour, 2 knit stitches base colour*. Repeat *...* for 5 rows before continuing.

Medium: Jump to “Going forward all sizes...”

Small: Start off at row 6 in the pattern repeat, the first time knitting the chart.

Going forward, all sizes:

You are now to start knitting the pattern repeat. *Knit according to chart A over the first 235(240)245 stitches, before knitting 2 knit stitches base colour, 1 purl stitch pattern colour, 3 stitches base colour (1 knit stitch, 1 purl stitch, 1 knit stitch), 1 purl stitch pattern colour, 2 knit stitches base colour*. *...* is to be repeated until you have completed the chart 1(2)2 times + the first 46(6)6 rows of the 2nd(3rd)3rd time.

Large: *Knit 247 knit stitches base colour, 1 purl stitch pattern colour, 3 stitches base colour (1 knit stitch, 1 purl stitch, 1 knit stitch), 1 purl stitch pattern colour, 2 knit stitches base colour*. Repeat *...* for 5 rows before continuing.

Going forward, all sizes:

Knit 1 row purl stitch in pattern colour. Knit the next 2 rows with base colour as followed: 239(244)249 knit stitch, 1 purl stitch, 243(248)253 knit stitch, 1 purl stitch, 4 knit stitches. You are now to cast off all stitches apart from the middle 34 stitches on both sides. These are to be put aside for the neckline.

Making up, first part:

Sew seams on both sides of the purl stitch on each side of the garment. This has to be done with a sewing machine. When this is done, cut through the purl stitch between the seams you just created.



S

... This is where the holes for the sleeves will be crafted.

T

Further, you have to join the shoulders as follows: turn the wrong side out and join the casted stitches from the front piece, with the casted stitches from the back piece. Move from the edge of the garment and up until the neckline. Repeat on both sides. Keep working on the garment with the wrong side out. We are now going to join the stitches that will appear as the inside of the sleeves.

O

Sew approx 25 cm in the bottom of the garment, from the edges and in towards the center. The garment shall now have 2 holes on each side for the sleeves.

H

Neckline:

Assemble the 68 stitches you previously set aside for the neckline, on circular needles nr. 6 40 cm. Knit 3 rows knit stitch in base colour before casting off the remaining stitches.

O

F

Arms:

Knit up approx 150(160)170 stitches along the pattern coloured purl stitches by the sleeve openings, with base colour on circular needle nr.5 40 cm. Knit 1 row knit stitch. For the next row, knit 2 stitches together all the way around. The number of stitches should now be decreased to approx 75(80)85 stitches. Knit 1 row knit stitch. For the next row: knit together every 3(3)2 and 4(4)3 stitches, until you have decreased with approx 20(25)30 stitches. Knit 4 rows knit stitch, before casting off all stitches. Repeat on both sides.

R

I

Making up, last part:

Fasten and weave all ends. The project is now completed.

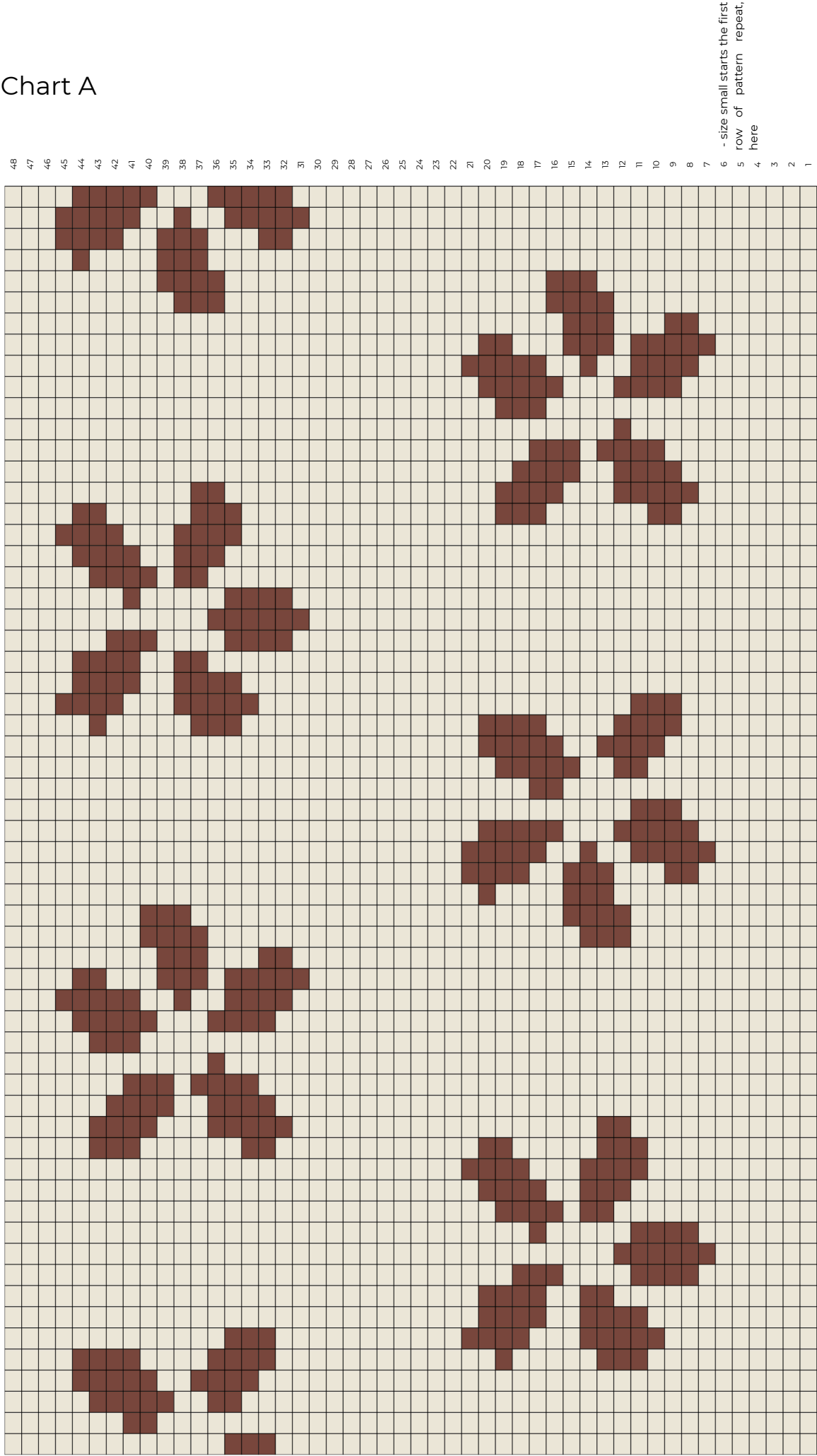
U

E

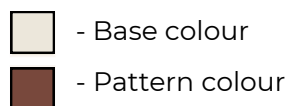


P

Chart A



Clarification, chart A



If you are knitting size **M** or **L**, start knitting from the first row in the chart. If you are knitting size **S**, start from row 6.

The following explanations describes one side of the garment, and is to be repeated on the other side.

S: The pattern repeats 3 times + up until stitch 55 on the 4th time, horizontally.

M: The pattern repeats 4 times, horizontally.

L: The pattern repeats 4 times + up until stitch 5 on the 5th time, horizontally.

SOFIE
THORUP

