



[www.lanagrossa.com](http://www.lanagrossa.com)

**COWL .**  
**MEILENWEIT MERINO 2 HAND-DYED**  
Design 17 – Hand-dyed 01

# COWL •

## MEILENWEIT MERINO 2 HAND-DYED

### Design 17 – Hand-dyed 01



**Size** 31 cm wide, 56 cm in circumference

**Materials:** 100 g each of Lana Grossa **Meilenweit Merino 2 hand-dyed** (80% pure wool, 20% polyamide; 420 m/100 g) in Salmon/Cognac/Ochre/Grey/Khaki/Blush/Pink/Curry (**col 402**) and Turquoise/Black/Petrol/Wine/Carnation/Light Green/Violet/Pink (**col 404**). Size 3 mm circular needle, 40 cm long; 2 cable needles [cn].

**Rib patt:** P1, k1.

**Two-color brioche rib:** Work according to chart. Multiple of 16. Numbers at right edge of chart indicate rnds. Work all rnds from right to left. Work 1 rnd each with col 404 and col 402 alternately throughout. Rep rnds 1 – 20. **Note:** 1 stitch and 1 yo are treated as 1 stitch.

**St st:** K on RS, p on WS.

**Gauges:** On size 3 mm needles: 30 sts and 40 rows = 10 x 10 cm in St st; 29 sts and 58 rnds = 10 x 10 cm in two-col brioche rib.

**Cowl:** With size 3 mm circular needle and col 402 loosely cast on 176 sts. Place beg of rnd marker and join for working in rnds. Work in rib patt for 1 rnd. Work rnds 1 and 2 of two-col brioche rib chart until piece meas 7 cm from cast-on. Work chart rnds 3 – 20 once, then work chart rnds 1 – 20 six times, then work chart rnd 17 once more. Next rnd: Knit to end of rnd and k2tog over each cable crossing = 165 sts. Next (bind-off) rnd: With col 402, \* k2, k2tog tbl, sl 3 sts back to left needle; rep from \* until 4 sts rem. K2tog 2 times, pass first st over 2nd st. Break yarn and fasten off last st.

**Finishing:** Pin piece to measurements and block.

Chart

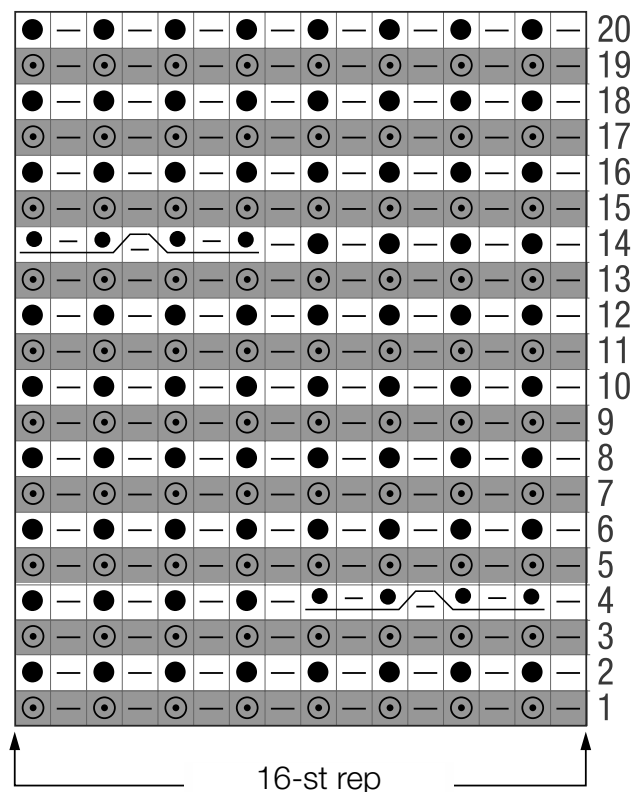
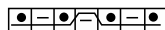


Chart key:

- = col 402
- = col 404
- p = p1
- = make a yo, then sl next st pwise
- = k2tog slipped st with its yo
- = sl 3 sts (including their yos) to first cn and hold in front of work, sl next st to 2nd cn and hold in back of work, work next 3 sts in two-col brioche rib as established, then p1 from 2nd cn, then work 3 sts on first cn in two-col brioche rib as established



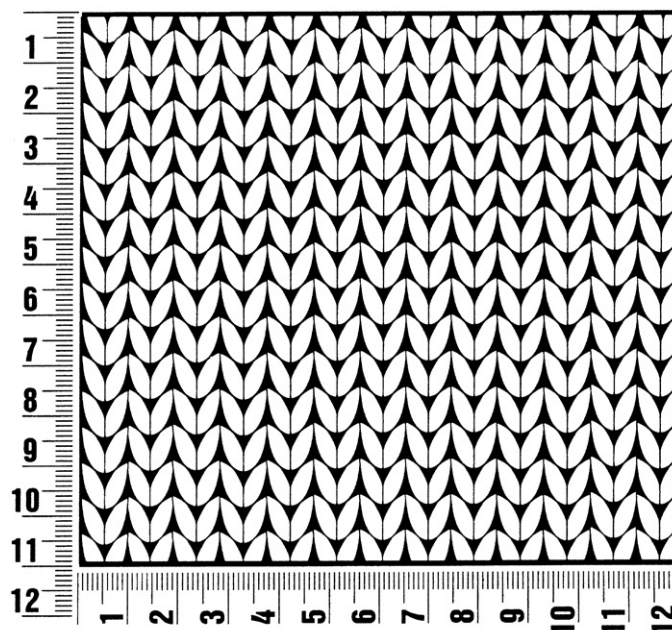
# Hand-dyed 01

www.lanagrossa.com

## Gauge Swatch

### Before you begin ...

...make a gauge swatch. Use the recommended needles, yarns and pattern stitch for your gauge swatch. It should measure approx. 12 cm x 12 cm. Cast-on and bind-off rows, as well as selvage stitches should not be included in the measurement. Pin your swatch and block it as you would the finished pieces of the garment. Count stitches and rows over 10 cm. If your gauge swatch is too small, switch to larger needles. If your gauge swatch is too big, switch to smaller needles.



## Abbreviations

**beg** = begin(ning) · **ch** = chain · **cont** = continue · **dec** = decreas(e)(ing) · **inc** = increas(e)(ing) · **k** = knit · **kwise** = as if to knit  
**meas** = measures · **M1L** = lift strand between sts from front to back and knit this strand through the back loop · **M1R** = lift strand between sts from the back and knit this strand through the front loop · **patt** = pattern · **pm** = place marker · **p** = purl  
**pwise** = as if to purl · **rem** = remain(ing) · **rep** = repeat(s) · **rev St st** = reverse stockinette stitch · **rnd(s)** = round(s) · **RS** = right side · **sc** = single crochet · **skp** = slip 1 stitch as if to knit, knit 1 stitch, pass slipped stitch over knitted stitch · **sk2p** = slip 1 stitch as if to knit, knit 2 together, pass slipped stitch over knitted stitch · **s2kp** = slip 2 stitches as if to knit, k 1 stitch, pass slipped stitches over knitted stitch · **sl** = slip · **st(s)** = stitch(es) · **St st** = stockinette stitch · **tbl** = through the back loop · **tog** = together · **wyib** = with yarn in back of work · **wyif** = with yarn in front of work · **WS** = wrong side · **yo(s)** = yarn over(s)

### Publisher's Info

**Publisher:** Lana Grossa GmbH, Gaimersheim, [www.lanagrossa.com](http://www.lanagrossa.com)

**Photographer:** Wilfried Wulff, [www.wilfriedwulff.com](http://www.wilfriedwulff.com)