

Book extract

Kaffe Fassett

X-Factor Blanket

Stunning multi-coloured blanket uses
intarsia to create eye-catching stripes



Kaffe Fassett X-Factor Blanket

KAFFE FASSETT is famous for his amazing use of colour in both knitting and quilting, and this glorious project brings the best of both to create a knitted blanket in diagonally striped squares. The rich colours of Rowan's Summer Tweed create the perfect combinations for this intarsia design.

BLANKET SQUARES

(make 48)

Using appropriate colour, cast on 42 sts. Beg with a K row and working in stocking stitch, beg and ending rows as indicated and using the intarsia technique, work 38 rows as set on appropriate chart using the colours as listed.

FINISHING

Join squares together as shown in diagram, rotating if necessary to create diamond shapes.

STRIPED EDGINGS

(work 4 alike)

Cast on 14 sts. Beg with a K row, working in stocking stitch and a stripe pattern of your choice (version shown uses mostly P and J with hints of other colours) but keeping each

SIZE

Each square measures approx. 26 x 17cm (10¹/₄in x 6³/₄in)

YARN

Rowan Summer Tweed (Aran weight; 70% silk, 30% cotton; 120m/50g skein)

1 x 50g skein each in:

A Brilliant 528; **C** Blueberry 525; **Q** Toast 530;

R Raffia 515; **S** Sunset 509; **U** Harbour 549;

V Jardinier 544

2 x 50g skeins in:

B Denim 529; **E** Bamboo 552; **F** Powder 500;

G Loganberry 546; **H** Butterball 538; **J** Torrid

536; **K** Reed 514; **L** Mango 542; **N** Rush 507;

P Tonic 551; **T** Summer Berry 537

3 x 50g skeins in:

D Navy 547; **M** Smoulder 522

NEEDLES & ACCESSORIES

1 pair 5mm (UK 6/US 8) knitting needles

1 4.5mm (UK 7/US 7) crochet hook

TENSION

16 sts and 23 rows to 10cm over st st on 5mm needles

stripe 10 rows deep, cont as foll:

Row 1 (RS): Knit to last st, slip last st, K1 from edge of throw then psso.

Row 2: Purl.

Cont as set until edging fits along 1 edge of throw.

Cast off.

CORNER SQUARES

(make 4)

Using K, cast on 14 sts.

Beg with a K row and working in stocking stitch throughout, using intarsia technique work 16 rows as set on chart 3.

Cast off.

Sew corner squares in place at ends of striped edgings.

CROCHET EDGING

Using a 4.5mm crochet hook and yarn P, work 1 round single crochet (UK double crochet) all round edge of throw, slip stitch to join.

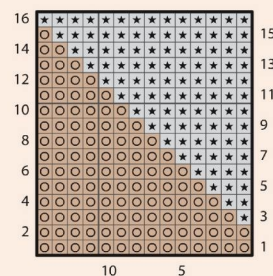
Next round: Using G, work 2 ch, work 1 round single crochet (UK double crochet) all round edge of throw, slip stitch to join.

Next round: Using D, work 2 ch, work 1 round single crochet (UK double crochet) all round edge of throw, slip stitch to join.

Fasten off. ☺

CHARTS

Chart 3



KEY

- Colour 1: K on RS, P on WS
- ▲ Colour 2: K on RS, P on WS
- ◆ Colour 3: K on RS, P on WS
- ◇ Colour 4: K on RS, P on WS
- ◀ Colour 5: K on RS, P on WS
- ◊ Colour 6: K on RS, P on WS
- ♥ Colour 7: K on RS, P on WS
- △ Colour 8: K on RS, P on WS
- ☆ Colour 9: K on RS, P on WS
- ★ Yarn B: K on RS, P on WS
- Yarn K: K on RS, P on WS

DIAGRAM

11	5	6	26	16	2
26	25	24	18	21	23
23	22	8	15	9	22
19	20	21	10	12	4
20	19	18	17	16	15
7	9	14	13	12	11
10	9	8	7	6	3
5	4	3	1	2	1

X-Factor Blanket

Chart 1

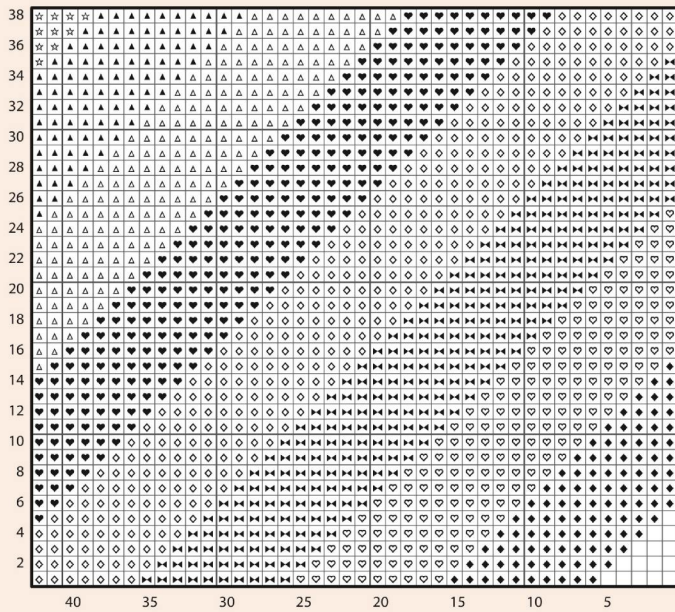
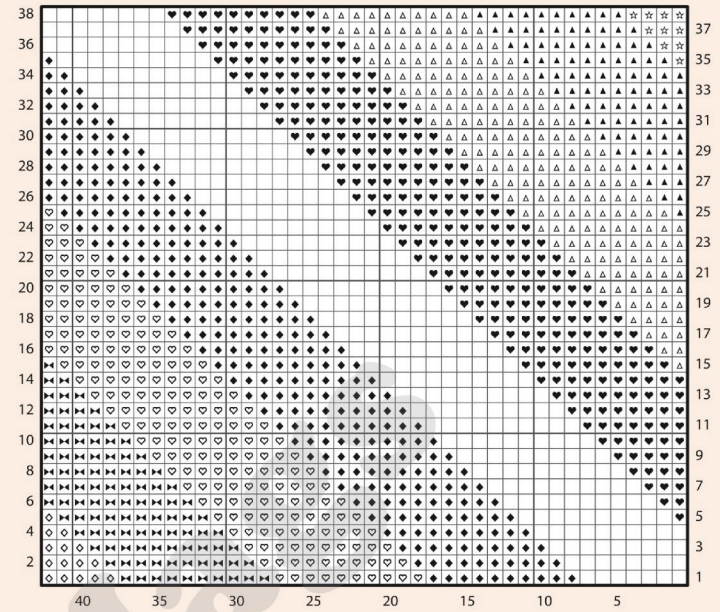


Chart 2



SQUARE COLOURS

Square 1 (Chart 1) 1 – Yarn A 2 – Yarn B 3 – Yarn C 4 – Yarn D 5 – Yarn E 6 – Yarn D 7 – Yarn F 8 – Yarn G 9 – Yarn H	Square 2 (Chart 2) 1 – Yarn J 2 – Yarn D 3 – Yarn K 4 – Yarn L 5 – Yarn M 6 – Yarn D 7 – Yarn N 8 – Yarn B 9 – Yarn A	Square 3 (Chart 2) 1 – Yarn E 2 – Yarn G 3 – Yarn F 4 – Yarn B 5 – Yarn A 6 – Yarn G 7 – Yarn F 8 – Yarn B 9 – Yarn A	Square 4 (Chart 1) 1 – Yarn A 2 – Yarn P 3 – Yarn F 4 – Yarn P 5 – Yarn H 6 – Yarn P 7 – Yarn Q 8 – Yarn P 9 – Yarn F	Square 5 (Chart 1) 1 – Yarn E 2 – Yarn D 3 – Yarn N 4 – Yarn L 5 – Yarn A 6 – Yarn L 7 – Yarn N 8 – Yarn B 9 – Yarn R	Square 6 (Chart 1) 1 – Yarn S 2 – Yarn G 3 – Yarn A 4 – Yarn L 5 – Yarn E 6 – Yarn L 7 – Yarn J 8 – Yarn L 9 – Yarn A	Square 7 (Chart 2) 1 – Yarn E 2 – Yarn D 3 – Yarn C 4 – Yarn B 5 – Yarn A 6 – Yarn D 7 – Yarn F 8 – Yarn G 9 – Yarn H	Square 8 (Chart 1) 1 – Yarn C 2 – Yarn L 3 – Yarn N 4 – Yarn D 5 – Yarn M 6 – Yarn D 7 – Yarn N 8 – Yarn L 9 – Yarn Q	Square 9 (Chart 2) 1 – Yarn J 2 – Yarn T 3 – Yarn U 4 – Yarn B 5 – Yarn H 6 – Yarn T 7 – Yarn U 8 – Yarn B 9 – Yarn H
Square 10 (Chart 1) 1 – Yarn C 2 – Yarn G 3 – Yarn K 4 – Yarn L 5 – Yarn H 6 – Yarn L 7 – Yarn N 8 – Yarn L 9 – Yarn A	Square 11 (Chart 1) 1 – Yarn J 2 – Yarn G 3 – Yarn S 4 – Yarn B 5 – Yarn H 6 – Yarn B 7 – Yarn V 8 – Yarn G 9 – Yarn A	Square 12 (Chart 2) 1 – Yarn H 2 – Yarn B 3 – Yarn S 4 – Yarn G 5 – Yarn J 6 – Yarn B 7 – Yarn V 8 – Yarn G 9 – Yarn A	Square 13 (Chart 1) 1 – Yarn N 2 – Yarn G 3 – Yarn J 4 – Yarn T 5 – Yarn M 6 – Yarn T 7 – Yarn F 8 – Yarn G 9 – Yarn S	Square 14 (Chart 2) 1 – Yarn J 2 – Yarn T 3 – Yarn U 4 – Yarn B 5 – Yarn H 6 – Yarn T 7 – Yarn U 8 – Yarn B 9 – Yarn H	Square 15 (Chart 2) 1 – Yarn H 2 – Yarn L 3 – Yarn N 4 – Yarn G 5 – Yarn C 6 – Yarn L 7 – Yarn N 8 – Yarn L 9 – Yarn A	Square 16 (Chart 1) 1 – Yarn A 2 – Yarn T 3 – Yarn N 4 – Yarn D 5 – Yarn E 6 – Yarn L 7 – Yarn N 8 – Yarn B 9 – Yarn H	Square 17 (Chart 2) 1 – Yarn E 2 – Yarn L 3 – Yarn A 4 – Yarn G 5 – Yarn S 6 – Yarn L 7 – Yarn J 8 – Yarn L 9 – Yarn A	Square 18 (Chart 1) 1 – Yarn J 2 – Yarn G 3 – Yarn K 4 – Yarn L 5 – Yarn H 6 – Yarn L 7 – Yarn K 8 – Yarn B 9 – Yarn S
Square 19 (Chart 2) 1 – Yarn H 2 – Yarn P 3 – Yarn F 4 – Yarn P 5 – Yarn A 6 – Yarn P 7 – Yarn Q 8 – Yarn P 9 – Yarn F	Square 20 (Chart 1) 1 – Yarn A 2 – Yarn B 3 – Yarn F 4 – Yarn G 5 – Yarn E 6 – Yarn G 7 – Yarn F 8 – Yarn B 9 – Yarn A	Square 21 (Chart 2) 1 – Yarn H 2 – Yarn L 3 – Yarn K 4 – Yarn B 5 – Yarn S 6 – Yarn L 7 – Yarn K 8 – Yarn G 9 – Yarn J	Square 22 (Chart 2) 1 – Yarn M 2 – Yarn D 3 – Yarn N 4 – Yarn L 5 – Yarn C 6 – Yarn D 7 – Yarn N 8 – Yarn L 9 – Yarn Q	Square 23 (Chart 1) 1 – Yarn A 2 – Yarn B 3 – Yarn N 4 – Yarn D 5 – Yarn J 6 – Yarn D 7 – Yarn N 8 – Yarn L 9 – Yarn ?	Square 24 (Chart 2) 1 – Yarn E 2 – Yarn L 3 – Yarn J 4 – Yarn T 5 – Yarn F 6 – Yarn L 7 – Yarn A 8 – Yarn G 9 – Yarn S	Square 25 (Chart 1) 1 – Yarn N 2 – Yarn G 3 – Yarn J 4 – Yarn L 5 – Yarn M 6 – Yarn T 7 – Yarn F 8 – Yarn G 9 – Yarn S	Square 26 (Chart 2) 1 – Yarn M 2 – Yarn T 3 – Yarn F 4 – Yarn G 5 – Yarn S 6 – Yarn T 7 – Yarn J 8 – Yarn G 9 – Yarn N	