



Unlock the MYSTERY OF MOSAIC

Designs by **BETH WHITESIDE**

In this “all things mosaic” mini workshop, you’ll get a little taste of what it means to work this easy yet intricate looking technique.

1 2 3 4 5 6 EASY

Finished Measurements

Stitch block: 5½ inches wide x 6½ inches long

Cowl: 7½ inches wide x 92 inches in circumference, slightly stretched

Materials

- Universal Yarn Uptown DK (DK weight; 100% acrylic; 273 yds/100g per ball): 1 ball each cedar #112 (A), sea #114 (B), blush #103 (C), bittersweet #106 (D), shale #126 (E) and Sahara #120 (F)
- Universal Yarn Uptown DK Colors (DK weight; 100% acrylic; 273 yds/100g per ball): 1 ball meadow #70303 (G)
- Size 5 (3.75mm) 60-inch circular needle or 2 shorter circular needles for cowl edgings
- Size 6 (4mm) needles or size needed to obtain gauge, plus 3rd needle for 3-needle bind-off
- Stitch markers



If you’re not a lover of managing more than one color at a time, the good news is you don’t have to! With mosaic knitting, you only use one color per row, and the colorwork look is achieved by simply slipping stitches from the previous row. What you’ll discover while you practice with these 3 stitch patterns is that mosaic knitting is easy to master, and when you’re ready to move on, we know you’ll love creating the striking infinity cowl at the end of this lesson!

Gauge

22 sts and 42 rows = 4 inches/10cm in garter stitch mosaic with larger needles, blocked.

To save time, take time to check gauge.

Stitch Blocks

Note: Use colors indicated in instructions for MC and CC. Slip sts pwise and hold yarn to WS of work when slipping sts. Charts are provided for those preferring to work pat sts from charts.



Diagonal Bars Stitch Block

Diagonal Bars (multiple of 8 sts + 5)

Row 1 (RS): With CC, k2, *sl 1, k3, [sl 1, k1] twice; rep from * to last 3 sts, sl 1, k2.

Row 2 and all WS rows: Using same color as for previous row, knit the knit sts and slip the slipped sts.

Row 3: With MC, k2, *k7, sl 1; rep from * to last 3 sts, k3.

Row 5: With CC, k2, *sl 1, k1, sl 1, k3, sl 1, k1; rep from * to last 3 sts, sl 1, k2.

Row 7: With MC, k2, *k1, sl 1, k6; rep from * to last 3 sts, k3.

Row 9: With CC, k2, *[sl 1, k1] twice, sl 1, k3; rep from * to last 3 sts, sl 1, k2.

Row 11: With MC, k2, *k3, sl 1, k4; rep from * to last 3 sts, k3.

Row 13: With CC, k2, *k2, [sl 1, k1] 3 times; rep from * to last 3 sts, k3.

Row 15: With MC, k2, *k5, sl 1, k2; rep from * to last 3 sts, k3.

Row 16: Rep Row 2.

Rep Rows 1–16 for pat.

Using larger needles and C as MC,
cast on 29 sts.

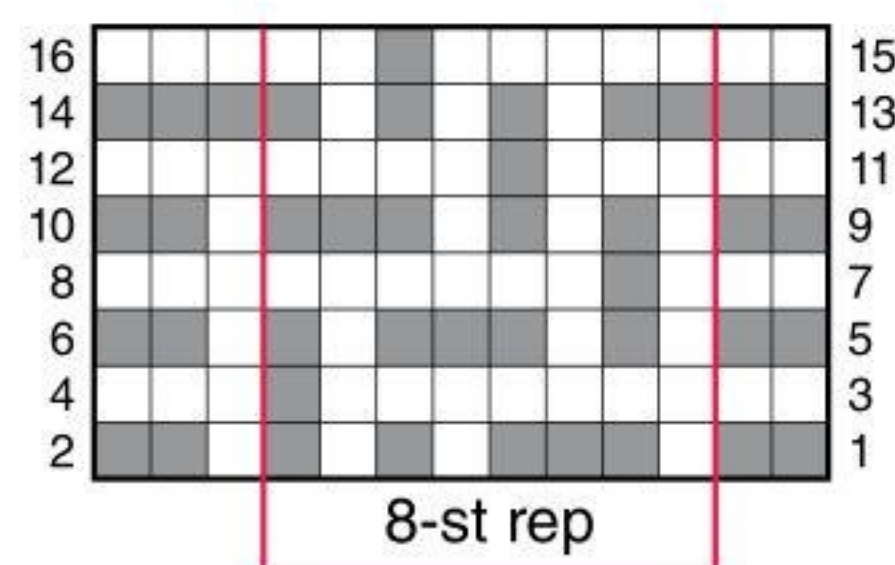
Knit 3 rows.

Using B as CC, work 16-row Diagonal
Bars pat 3 times. Cut B.

Knit 4 rows.

Bind off kwise.

COLOR KEY	
□	MC
■	CC



DIAGONAL BARS CHART

Note: Knit RS and WS rows using
color in right-most cell.
Slip all sts shown in other color.

Diamonds (multiple of 12 sts + 5)

Row 1 (RS): With CC, k2, *k2, sl 1, k3,
sl 1, k1, sl 1, k3; rep from * to last
3 sts, k3.

Row 2 and all WS rows: Using same
color as for previous row, knit the
knit sts and slip the slipped sts.

Row 3: With MC, k2, *k1, sl 1, k3,
sl 1, k3, sl 1, k2; rep from * to last
3 sts, k3.

Row 5: With CC, k2, *k4, sl 1, k5, sl 1,
k1; rep from * to last 3 sts, k3.

Row 7: With MC, k2, *k3, sl 1, k7, sl 1;
rep from * to last 3 sts, k3.

Row 9: With CC, k2, *sl 1, k1, sl 1, k5,
sl 1, k3; rep from * to last 3 sts,
sl 1, k2.

Row 11: With MC, k2, *k3, [sl 1, k1]
4 times, k1; rep from * to last
3 sts, k3.

Row 13: With CC, k2, *sl 1, k3, sl 1,
k5, sl 1, k1; rep from * to last 3 sts,
sl 1, k2.



Diamonds Stitch Block

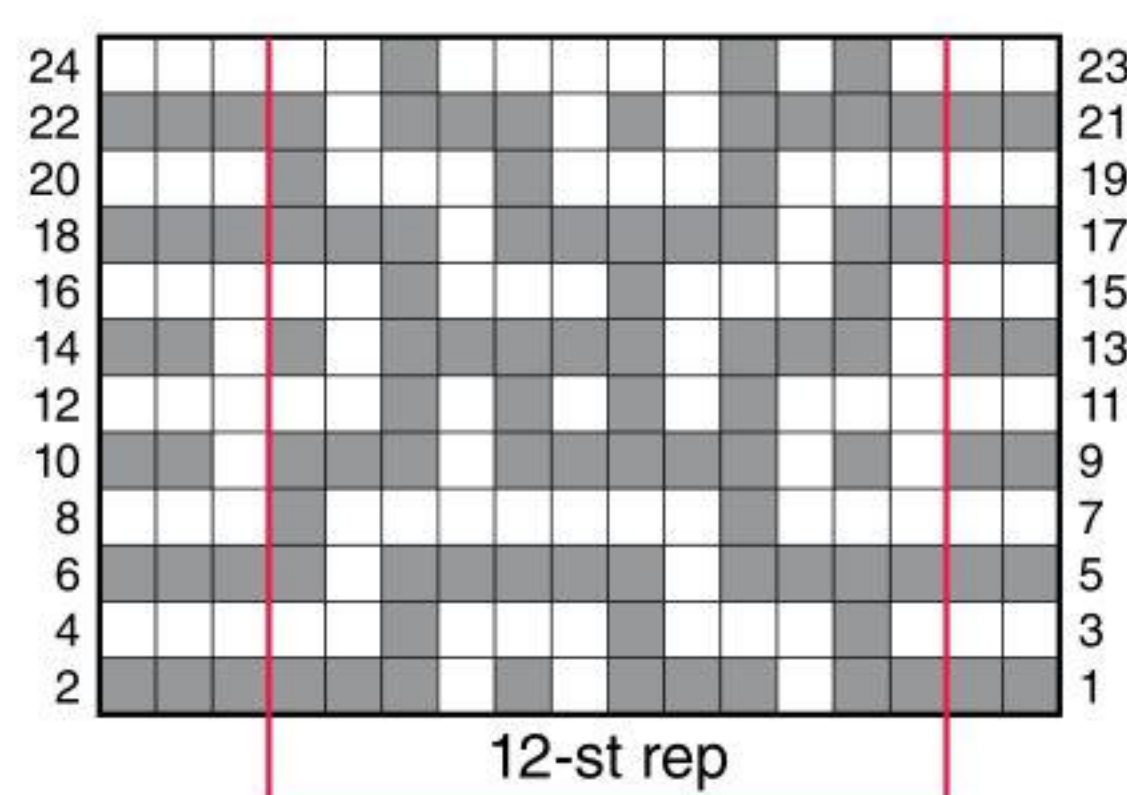
Row 15: With MC, k2, *k1, [sl 1, k3] twice,
sl 1, k2; rep from * to last
3 sts, k3.

Row 17: With CC, k2, *k2, sl 1, k5, sl 1, k3;
rep from * to last 3 sts, k3.

Row 19: With MC, k2, *k3, [sl 1, k3] twice,
sl 1; rep from * to last 3 sts, k3.

Row 21: With CC, k2, *k4, sl 1, k1, sl 1, k3, sl 1, k1; rep from * to last 3 sts, k3.
Row 23: With MC, k2, *k1, sl 1, k1, sl 1, k5, sl 1, k2; rep from * to last 3 sts, k3.
Row 24: Rep Row 2.
 Rep Rows 1–24 for pat.
 Using larger needles and A as MC, cast on 29 sts.
 Knit 3 rows.
 Using G as CC, work 24-row Diamonds pat twice. Cut G.
 Knit 4 rows.
 Bind off kwise.

COLOR KEY	
□	MC
■	CC



DIAMONDS CHART

Note: Knit RS and WS rows using color in right-most cell. Slip all sts shown in other color.

Celtic Knot (multiple of 24 sts + 5)

Row 1 (RS): With CC, k2, *k1, [sl 1, k1] 3 times, sl 2, k7, sl 2, [k1, sl 1] 3 times; rep from * to last 3 sts, k3.

Row 2 and all WS rows: Using same color as for previous row, knit the knit sts and slip the slipped sts.

Row 3: With MC, k2, *k9, sl 1, k5, sl 1, k8; rep from * to last 3 sts, k3.

Row 5: With CC, k2, *k1, [sl 1, k1] 3 times, sl 2, k1, sl 1, k3, sl 1, k1, sl 2, [k1, sl 1] 3 times; rep from * to last 3 sts, k3.

Row 7: With MC, k2, *k9, [sl 1, k1] 3 times, sl 1, k8; rep from * to last 3 sts, k3.

Row 9: With CC, k2, *k1, sl 1, k1, sl 2, k5, sl 1, k9, sl 2, k1, sl 1; rep from * to last 3 sts, k3.

Row 11: With MC, k2, *k5, sl 1, k3, sl 1, k1, sl 1, k7, sl 1, k4; rep from * to last 3 sts, k3.

Row 13: With CC, k2, *k1, sl 1, k1, sl 2, k1, sl 1, k3, sl 1, k7, sl 1, k1, sl 2, k1, sl 1; rep from * to last 3 sts, k3.

Row 15: With MC, k2, *k5, [sl 1, k1] 7 times, sl 1, k4; rep from * to last 3 sts, k3.

Row 17: With CC, k2, *sl 1, k5, sl 1, k3, [sl 1, k1] 3 times, k8; rep from * to last 3 sts, sl 1, k2.

Row 19: With MC, k2, *k1, [sl 1, k3, sl 1, k1] twice, sl 1, k9, sl 1; rep from * to last 3 sts, k3.

Row 21: With CC, k2, *sl 1, k1, sl 1, k3, sl 1, k5, sl 1, k9, sl 1, k1; rep from * to last 3 sts, sl 1, k2.

Row 23: With MC, k2, *[k1, sl 1] 4 times, k9, [sl 1, k1] 3 times, sl 1; rep from * to last 3 sts, k3.

Row 25: With CC, k2, *sl 1, k1, sl 1, k9, sl 1, k5, sl 1, k3, sl 1, k1; rep from * to last 3 sts, sl 1, k2.

Row 27: With MC, k2, *k1, sl 1, k9, [sl 1, k1, sl 1, k3] twice, sl 1; rep from * to last 3 sts, k3.

Row 29: With CC, k2, *sl 1, k9, [sl 1, k1] 3 times, k2, sl 1, k5; rep from * to last 3 sts, sl 1, k2.

Row 31: With MC, k2, *k5, [sl 1, k1] 8 times, k3; rep from * to last 3 sts, k3.

Row 33: With CC, k2, *k1, sl 1, k1, sl 2, k1, sl 1, k7, sl 1, k3, sl 1, k1, sl 2, k1, sl 1; rep from * to last 3 sts, k3.

Row 35: With MC, k2, *k5, sl 1, k7, sl 1, k1, sl 1, k3, sl 1, k4; rep from * to last 3 sts, k3.

Row 37: With CC, k2, *k1, sl 1, k1, sl 2, k9, sl 1, k5, sl 2, k1, sl 1; rep from * to last 3 sts, k3.

Row 39: With MC, k2, *k9, [sl 1, k1] 4 times, k7; rep from * to last 3 sts, k3.

Row 41: With CC, k2, *k1, [sl 1, k1] 3 times, sl 2, k1, sl 1, k3, sl 1, k1, sl 2, [k1, sl 1] 3 times; rep from * to last 3 sts, k3.

Row 43: With MC, k2, *k9, sl 1, k5, sl 1, k8; rep from * to last 3 sts, k3.

Row 45: With CC, k2, *k1, [sl 1, k1] 3 times, sl 2, k7, sl 2, [k1, sl 1] 3 times; rep from * to last 3 sts, k3.

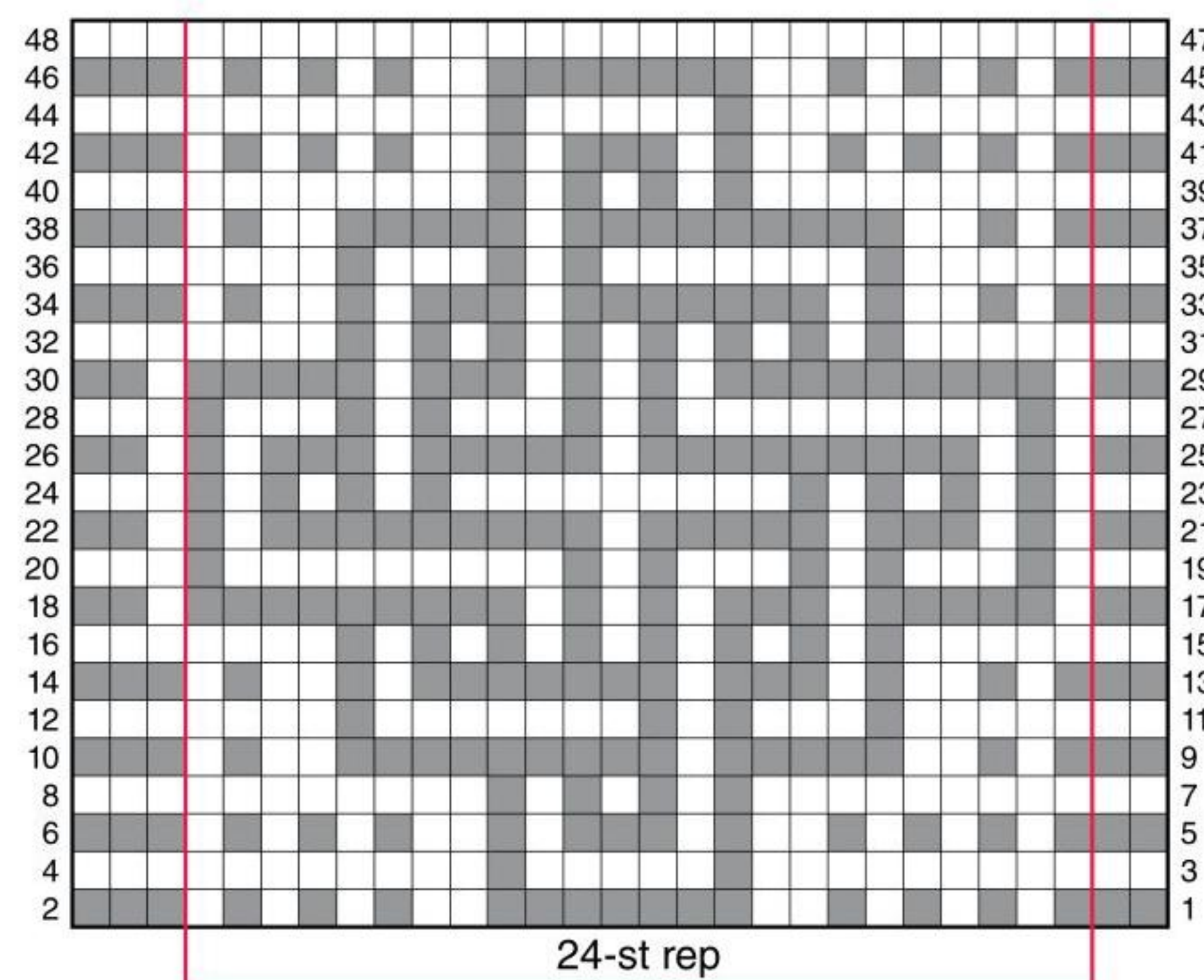


Celtic Knot Stitch Block

Row 47: With MC, knit.

Row 48: Rep Row 2.
 Using larger needles and B as MC, cast on 29 sts.
 Knit 3 rows.
 Using D as CC, work Rows 1–16 of Celtic Knot pat; cut D.
 Using A as CC, work Rows 17–32 of Celtic Knot pat; cut A.
 Using C as CC, work Rows 33–48 of Celtic Knot pat; cut C.
 Knit 4 rows.
 Bind off kwise.

COLOR KEY	
□	MC
■	CC



CELTIC KNOT CHART

Note: Knit RS and WS rows using color in right-most cell. Slip all sts shown in other color.

Pattern Notes

Stitch blocks are worked in garter-stitch mosaic throughout and are bordered with garter stitch.

Cowl squares are joined end to end by picking up stitches and working 3-needle bind-off (see page 111).

Cowl borders are picked up and worked in the round after strip has been joined into a circle.

Finishing

Borders

*With RS of Diagonal Bars square facing, using larger needle and E, pick up and knit 1 st in each st across cast-on edge.

Knit 3 rows, then bind off, leaving last st on needle.

Turn square 90 degrees. With RS facing, pick up and knit 1 st in each ridge along side edge.

Knit 3 rows, then bind off, leaving last st on needle.

Rep from * once, fastening off last st.

With F, add border to Diamonds square.

With E, add border to Celtic Knot square.

Weave in ends.

Block borders.

Cowl

Make 5 Diagonal Bars squares using colors as follows:

Square 1: MC = A, CC = B.

Square 2: MC = B, CC = D.

Square 3: MC = C, CC = A.

Square 4: MC = D, CC = C.

Square 5: MC = G, CC = B.

Make 5 Diamonds squares using colors as follows:

Square 6: MC = A, CC = D.

Square 7: MC = B, CC = C.

Square 8: MC = C, CC = D.

Square 9: MC = D, CC = B.

Square 10: MC = G, CC = A.

Make 5 Celtic Knot squares using colors as follows:

Square 11: MC = A, CC = C.

Square 12: MC = B, CC = A.

Square 13: MC = C, CC = B.

Square 14: MC = D, CC = A.

Square 15: MC = G, CC = C.



Finishing

Lightly steam-block squares.

Arrange squares in order from 1 to 15, with cast-on edges butting bound-off edges.

*With RS facing, using larger needle and F, pick up and knit 1 st in each st across cast-on edge of Square 1—29 sts.

Purl 1 row; cut yarn.

With RS facing, using larger needle and F, pick up and knit 1 st in each st across bound-off edge of Square 2—29 sts.

Purl 1 row.

Holding WS tog, work 3-needle bind-off to join squares.

Rep from *, joining cast-on edge of square just joined to bound-off edge of next square in order.

Join cast-on edge of Square 15 to bound-off edge of Square 1.

Borders

With RS facing, using smaller circular needle and G, pick up and knit 1 st per ridge and 2 sts in each join ($28 + 2$ sts per square) around; pm for beg of rnd and join—450 sts.

Purl 3 rnds, knit 1 rnd.

Bind off kwise.

With RS of other edge facing, using smaller circular needle and E, pick up and knit 1 st per ridge and 2 sts in each join ($28 + 2$ sts per square) around; pm for beg of rnd and join—450 sts.

Note: Cut each yarn when its stripe is complete.

With E, purl 3 rnds.

With F, knit 5 rnds.

Purl 1 rnd each with D, A, C and B.

With F, knit 5 rnds.

With E, purl 5 rnds, then knit 2 rnds.

Bind off kwise.

Weave in ends.

Block borders. ●

tip

When choosing a solid to work with a multicolored yarn, make sure there is strong contrast. Patterns will look muddy if colors are too close together.

