



Take It Anywhere Topper

DESIGN BY LOIS S. YOUNG

Create an elegant and timeless look with this richly patterned cloche.

1 2 3 4 5 6 INTERMEDIATE

Size

Adult medium

Finished Measurements

Circumference: 22 inches (excluding brim)

Height: 9 inches (including brim)

Materials

- Brown Sheep Nature Spun Sport (sport weight; 100% wool; 184 yds/50g per skein): 1 skein each pomegranate #146 (MC) and pepper #601 (CC)
- Size 3 (3.25mm) 24-inch circular and double-point (set of 5) needles or size needed to obtain gauge
- Stitch markers, 1 in CC for beg of rnd



Gauge

29-st pat rep = 4½ inches/10.5cm; 26 rnds = 4 inches/10cm in stranded St st.

To save time, take time to check gauge.

Pattern Stitch

Color Pat

Pat is worked from chart provided.

Pattern Notes

Hat is worked from the pattern bands to the top; the brim is picked up and knit down from the cast-on edge.

Change to double-point needles when stitches no longer fit comfortably on circular needle.

Cloche

Body & Crown

With circular needle and MC, cast on 145 sts; pm for beg of rnd and join, taking care not to twist sts.

Rnd 1: Purl.

Rnd 2: Knit.

Rnd 3: *P29, pm; rep from * around.

Work Rnds 1–44 of Chart—5 sts rem. Cut yarn, leaving 4-inch tail.

Using tapestry needle, thread tail through rem sts, pull tight and secure to WS.

Brim

With circular needle and CC, pick up and knit 144 sts around bottom of hat.

Rnd 1: *(P1, k1) in next st, k11; rep from * around—156 sts.

Rnd 2: Knit.

Rnd 3: *K3 CC, k3 MC; rep from * around.

Rnd 4: *K3 MC, k3 CC; rep from * around.

Rnd 5: Knit with CC.

Rnd 6: Purl with CC.

Rnd 7: Knit with MC.

Rnd 8: Purl with MC.

Rnds 9 and 10: Rep Rnds 7 and 8.

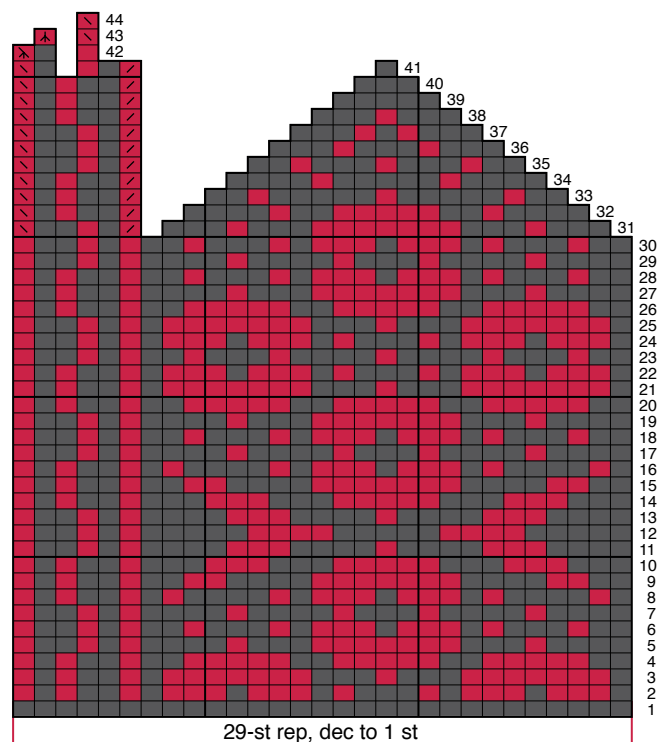
Rnds 11–20: Knit with CC.

Bind-off rnd: *K11, k2tog, binding off as you go; rep from * around.

Finishing

Turn hem to inside of brim along MC garter st band; whipstitch hem to cast-on edge of hat.

Weave in ends. Block lightly. ■



STITCH AND COLOR KEY

- Knit with CC
- Knit with MC
- K2tog with MC
- Ssk with MC
- [SI 1, k2tog, pssso] with MC
- [SI 2 tog kwise, pssso] with MC

SEGMENTED SCANDINAVIAN CLOCHE