

Snowflakes & EVERGREENS CARDIGAN

The *Snowflakes and Evergreens Cardigan* is a Fair Isle cardigan with winter elements which will quickly become a favourite during the cold winter months. The large shawl collar can be turned up against a windy day and the sleeves are generously sized to allow for layering.

This design is knitted circularly whenever possible, using steeks (bridge stitches) to form a cylinder that is cut open for the cardigan front opening. Steeks are also used for the sleeve openings and even the neckline, all to keep you knitting with the right side facing you. The only purl stitches are in the ribbing, top section of the sleeves, bands, and collar.



skill level advanced

skills required

reading charts, two colour knitting, steeks, short row shaping

sizing

Unisex - Small - Medium – Large

finished measurements

40", 44", 48" [102, 112, 122cm]

materials

yarn

- Universal Yarn Deluxe Worsted Superwash

Note: 3 balls of Pomegranate Heather are required. 1 ball is required for all other colours.

Colour number	Colour name
751	Pomegranate Heather
732	Ice Grey
735	Ebon
740	Twilight
716	Nitrox Blue
745	Cobalt
710	Greenery
711	Jadestone
754	Shamrock Heather
743	Bashful Pink

needles

- US 6 [4mm] 36" [90cm] circular needle or size required to match gauge. For sleeve use 16" [40cm] circular in same size. DPNs for start of sleeve.

other

- Thread and needles for sewing steeks before cutting. This can be done by hand or by machine
- 6 buttons

gauge

21 sts and 24 rows 4" [10cm] in Fair Isle pattern in stocking stitch. Adjust your needle size to reach the correct gauge.

INSTRUCTIONS

Body

Body length to underarm is 12½" [32cm]. To lengthen, either knit the ribbing longer or repeat chart 7 before beginning chart 1.

Ribbing

Cast on 208 (228, 248) sts in Pomegranate Heather. Do not join; body ribbing is knitted flat.

Row 1: p1, *k2, p2, rpt from * to last 3 sts, end k2, p1.

Row 2: k1, *p2, k2, rpt from * to last 3 sts, end p2, k1.

Repeat rows 1 and 2 for 3" [8cm], or desired length, ending with row 2. Cast on six stitches which form front steek along with the two purl selvedge stitches and join work. Steek stitches are worked as p1 in background colour, k6 alternating background and pattern colours, p1 in background colour. Change colours when required in the center of the steek stitches.

Knitting circularly, follow charts for patterns.

Chart 1 Snowy Path 1

Chart 2 Snowflake 1

Chart 3 Small Ice Crystals 1

Chart 4 Evergreen Trees

Chart 5 Snowy Path 2

Chart 6 Snowflake 2

Chart 7 Small Ice Crystals 2

Armhole Steeks and Neck Decreases

After chart 7, start armhole steeks and neck decreases.

Counting from left side of center front steek, place markers after 38 (43, 48) sts, 24 sts after first marker, 82 (92, 102) sts after second marker, 24 sts after third marker. 38 (43, 48) sts left before the center front steek sts.

Next row: SSK first two sts after front steek (start of neckline decreases), knit to first marker, place next 24 sts on a holder. Cast on 8 sts to form the right sleeve steek. Knit to third marker, place next 24 sts on a holder and cast on 8 sts to form left sleeve steek. Knit to last two sts before center steek; k2 tog. Continue in patterns, decreasing

one stitch at each side of center steek every third row, 14 times, until 24 (29, 34) stitches remain in each front section.

Armhole steeks are knit the same as the front steek: one purl stitch on each side and alternate colours in the center six sts.

Chart 8 Winter Sunset Trees

This chart is omitted for the sleeves.

Chart 9 Snowy Path 3

Optional for the sleeves

Chart 10 Reindeer

Chart 11 Large Ice Crystals

Knit circularly for body of sweater, knit flat for sleeves.

Cast off using Jadestone.

Opening Steeks

By hand or machine sewing, run two lines of close stitching down **each** side of the center of each steek. Cut between the two center lines. Fold the steeks along the purl to inside; tack lightly down to wrong side of garment.

With wrong sides together, join the shoulder seams.

Sleeves

Using dpn's and Pomegranate Heather, cast on 52 (56, 60) stitches. Join to work circularly.

Knit in K2, p2 ribbing for 5½" [14cm] or desired length.

Mark 2 underarm sleeves; starting with the second round, increase every third row on each side of underarm stitches 10 (8, 6) times, then every fourth row 4 times - 80 sts.

Sleeve is worked in the same patterns and same order as body of sweater, until Chart 8 (Winter Sunset Trees). Omit chart 8. Chart 9 (Snowy Path 3) is optional, knit it if you want slightly longer sleeves. Continuing with circular knitting, knit chart 10 (Reindeer).

Switch to flat knitting for Chart 11 (Large Ice Crystals). Cast off with Jadestone.

Bands and Collar

Pick up and knit 70 sts from bottom of rib to start of neckline decreases, 68 sts along neckline diagonal, 34 across back neckline, 68 along neckline diagonal, 70 from neckline decreases to end of ribbing. 270 sts total.

Snowflakes & EVERGREENS CARDIGAN

Colour Key

- 728 - Pulp
- ⊗ 751 - Pomegranate Heather
- 735 - Ebony
- ▣ 732 - Ice Grey
- 716 - Nitrox Blue
- ⊙ 745 - Cobalt
- 740 - Twilight
- ⊗ 754 - Shamrock Heather
- ⊕ 711 - Jadestone
- ▬ 710 - Greenery
- ⊞ 743 - Bashful Pink

Band Row 1 (WS): p2, * k2, p2; repeat from * to end of row.

Band Row 2: k2, * p2, k2, repeat from * to end of row.

Repeat Band Row 1.

Maintaining rib pattern, on fourth row of ribbing begin short row shaping of shawl collar. Place markers at the beginning of neckline decreases on both fronts and short row between them, then move markers in four stitches and repeat. Continue for 15 pairs of short rows. Finish row, turn and work back, making buttonholes in the correct side (right for women, left for men) as you go.

Next row: begin another set of short rows, starting 8 stitches above the start of the neckline decreases and decreasing each short row by eight stitches 6 times. Finish this row, knit two more rows in rib and cast off.

finishing

Sew sleeves in place. Work in all ends. Sew on buttons.

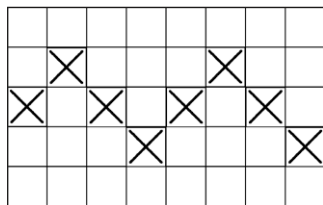


CHART 1

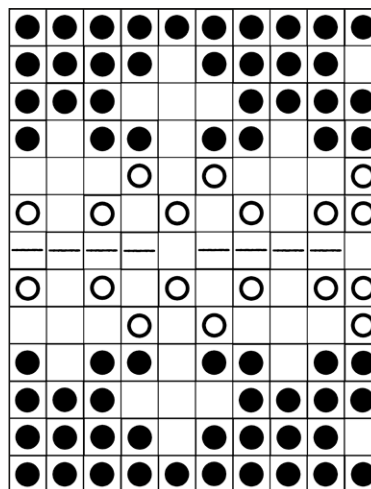


CHART 2

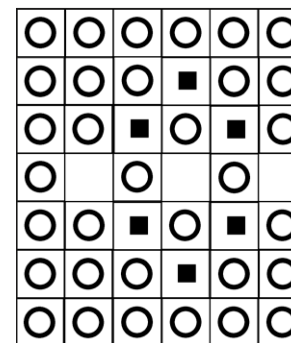


CHART 3

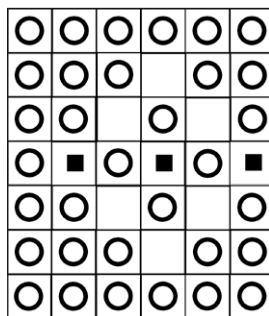


CHART 7

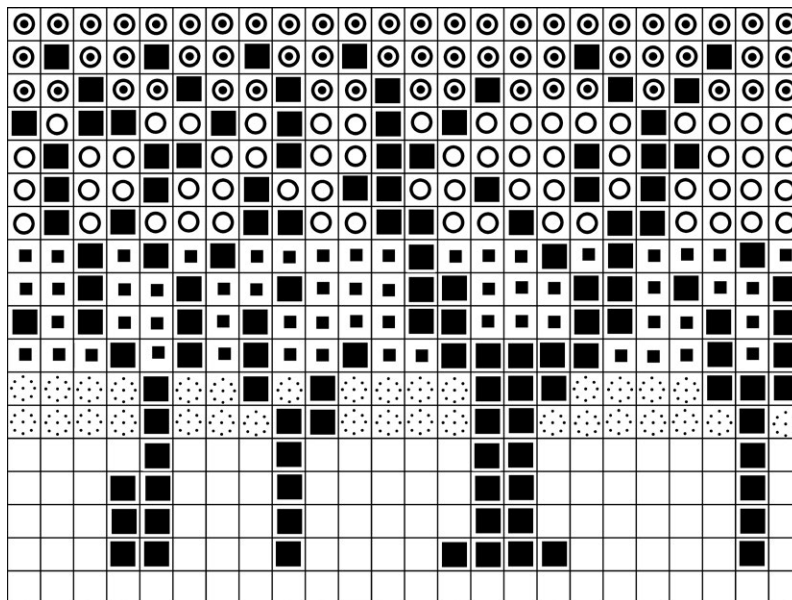


CHART 8

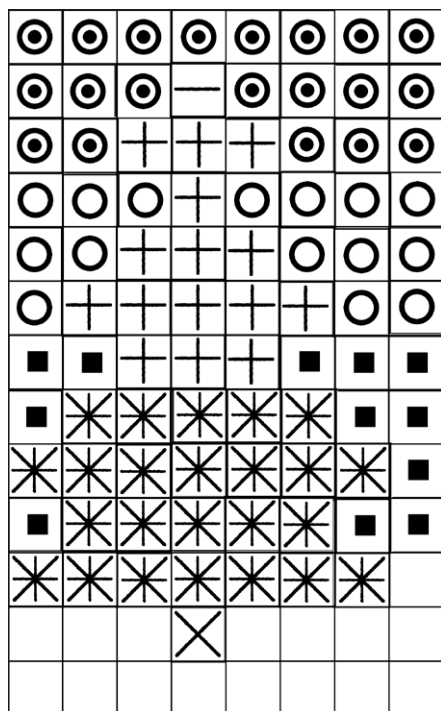


CHART 4

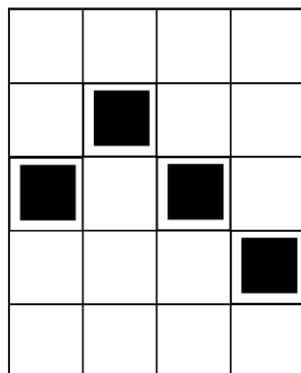


CHART 5

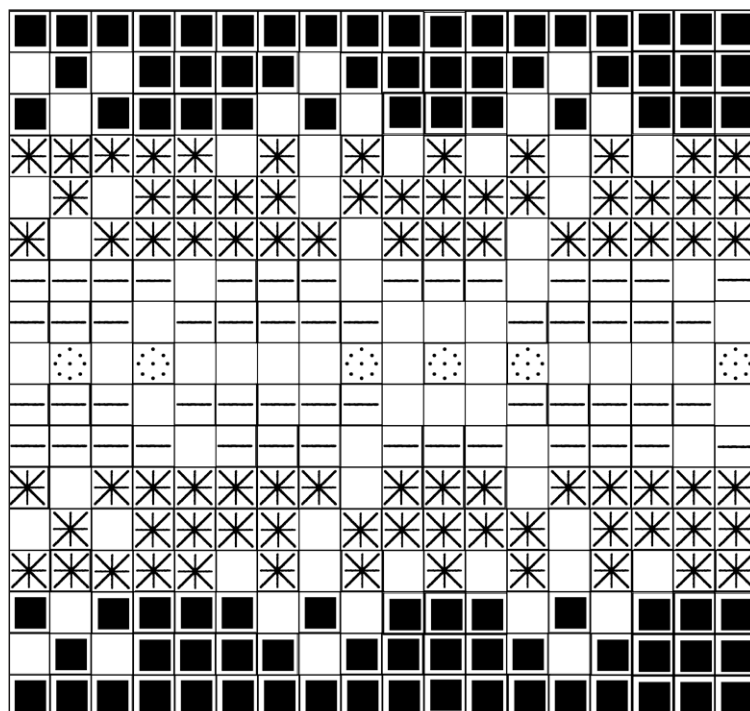


CHART 6

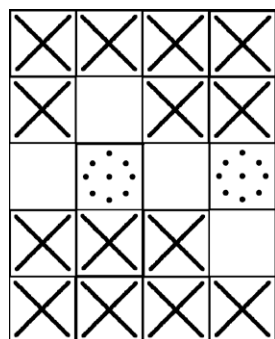


CHART 9

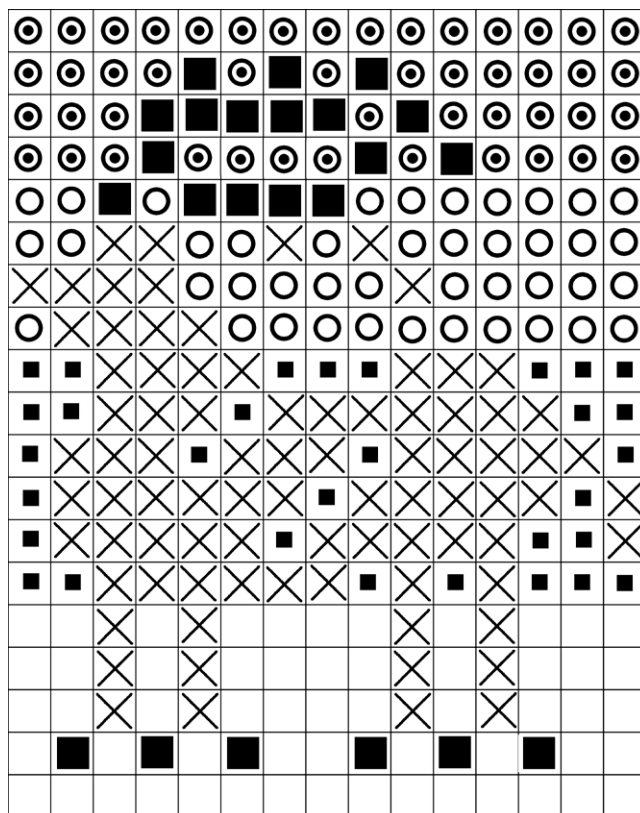


CHART 10

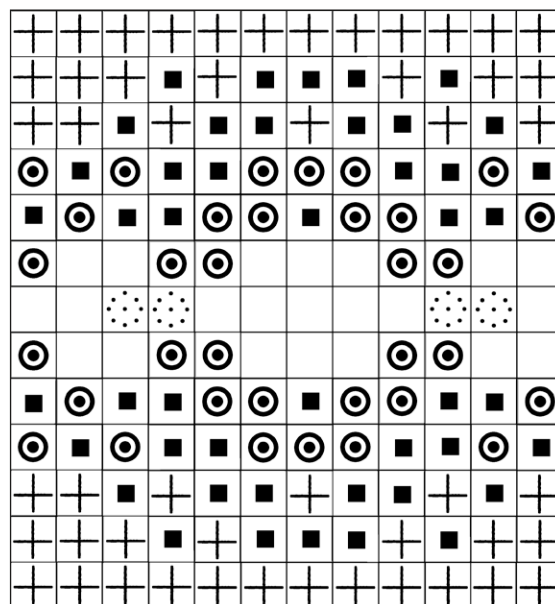


CHART 11



Denise Powell
DenisePowellKnits@gmail.com
 Ravelry: [Doctor Knit](#)